

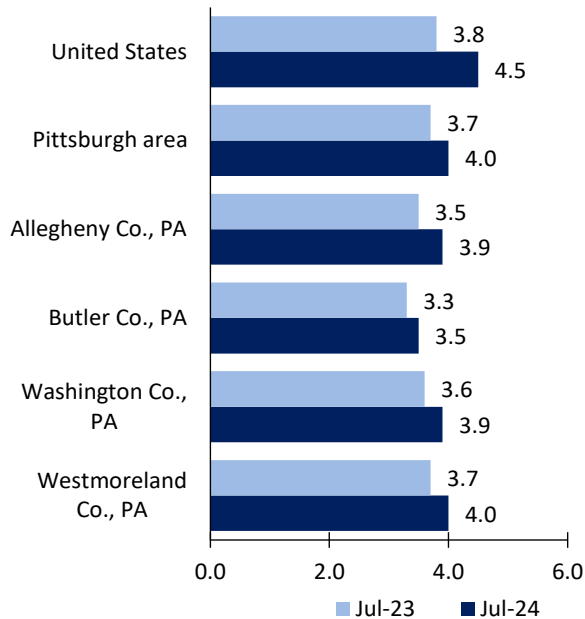
Pittsburgh area Economic Summary

Updated August 29, 2024

This summary presents a sampling of economic information for the area; supplemental data are provided for regions and the nation. Subjects include **unemployment, employment, wages, prices, spending, and benefits**. All data are not seasonally adjusted and some may be subject to revision. Area definitions may differ by subject. For more area summaries and geographic definitions, see www.bls.gov/regions/economic-summaries.htm.

Unemployment rates for the nation and selected areas

Unemployment rates

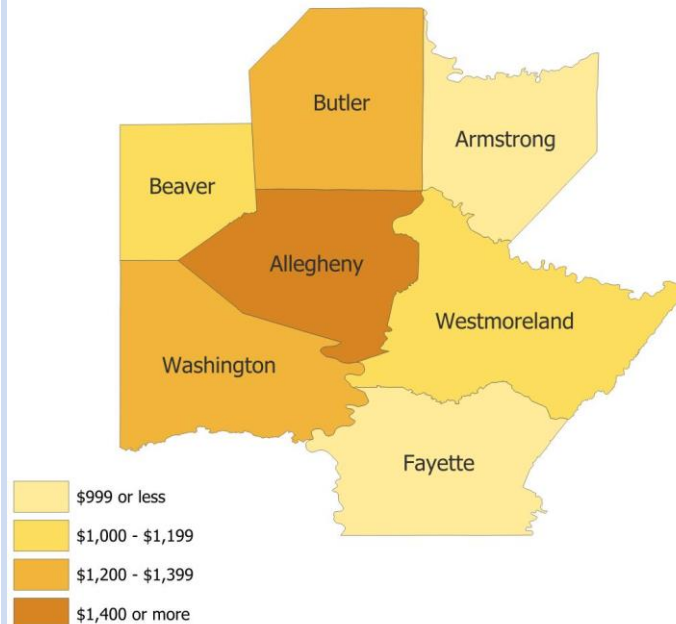


Source: U.S. BLS, Local Area Unemployment Statistics.

Average weekly wages for all industries by county

Pittsburgh area, fourth quarter 2023

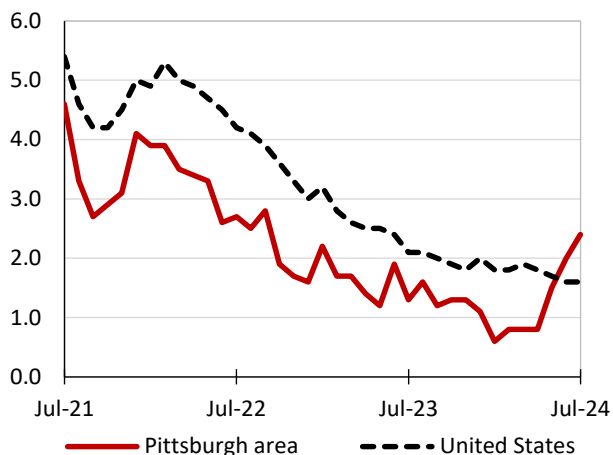
(U.S. = \$1,435; Area = \$1,362)



Source: U.S. BLS, Quarterly Census of Employment and Wages.

Over-the-year changes in employment on nonfarm payrolls and employment by major industry sector

12-month percent changes in employment



Source: U.S. BLS, Current Employment Statistics.

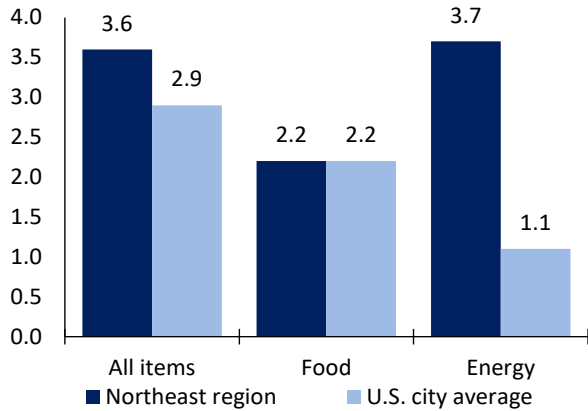
Pittsburgh area employment (number in thousands)	Jul. 2024	Change from Jul. 2023 to Jul. 2024	
		Number	Percent
Total nonfarm	1,190.3	27.6	2.4
Mining and logging	8.4	0.3	3.7
Construction	58.8	-1.2	-2.0
Manufacturing	86.6	1.5	1.8
Trade, transportation, and utilities	205.7	3.5	1.7
Information	21.7	0.0	0.0
Financial activities	75.5	1.4	1.9
Professional and business services	190.3	-0.5	-0.3
Education and health services	252.8	11.8	4.9
Leisure and hospitality	130.6	8.3	6.8
Other services	50.5	1.6	3.3
Government	109.4	0.9	0.8

Source: U.S. BLS, Current Employment Statistics.



Over-the-year change in the prices paid by urban consumers for selected categories

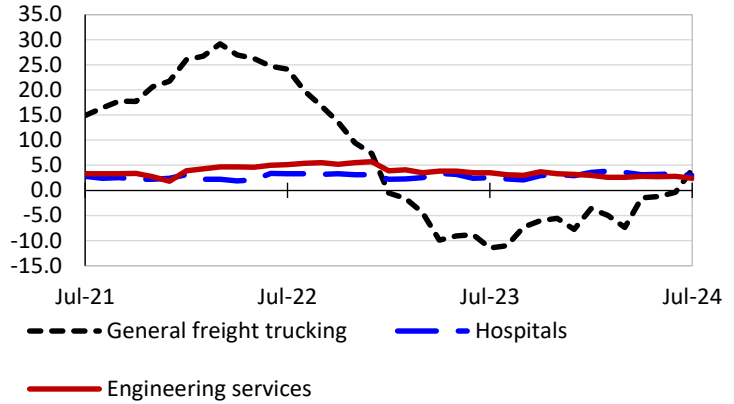
12-month percent change in CPI-U, July 2024



Source: U.S. BLS, Consumer Price Index.

Over-the-year changes in the selling prices received by producers for selected industries nationwide

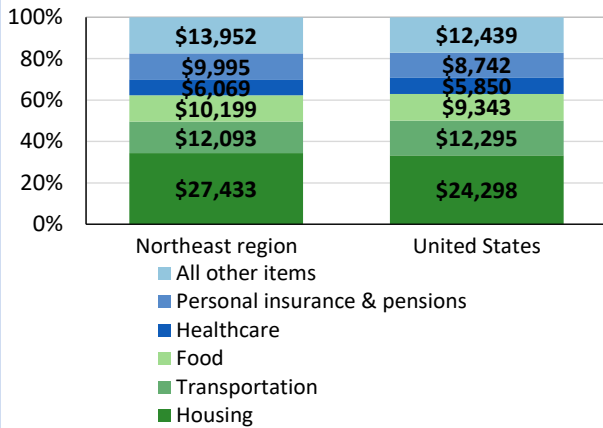
12-month percent changes in PPI



Source: U.S. BLS, Producer Price Index.

Average annual spending and percent distribution for selected categories

Average annual expenditures, United States and Northeast region, 2022



Source: U.S. BLS, Consumer Expenditure Survey.

Average hourly wages for selected occupations

Occupation	Pittsburgh area	United States
All occupations	\$29.60	\$31.48
Civil engineers	46.89	48.64
Accountants and auditors	38.80	43.65
Carpenters	30.00	29.31
Substance abuse, behavioral disorder, and mental health counselors	25.94	28.89
Office clerks, general	20.67	20.94
Cashiers	13.63	14.77

Source: U.S. BLS, Occupational Employment and Wage Statistics, May 2023.

Employer costs per hour worked for wages and selected employee benefits by geographic division

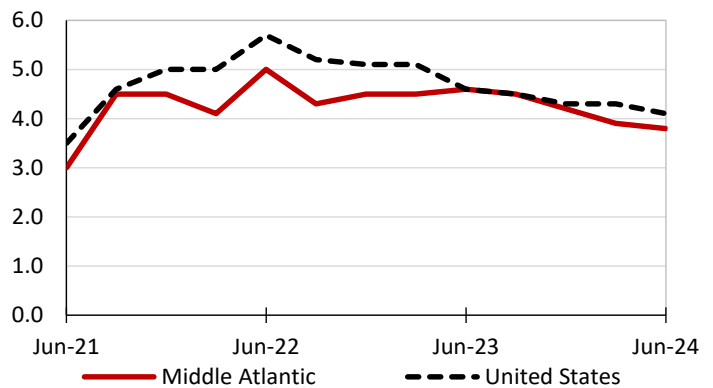
Private industry, March 2024	Middle Atlantic	United States
Total compensation	\$53.35	\$43.78
Wages and salaries	36.97	30.76
Total benefits	16.38	13.02
Paid leave	4.39	3.31
Vacation	2.19	1.69
Supplemental pay	1.87	1.77
Insurance	3.99	3.20
Retirement and savings	2.20	1.52
Legally required benefits	3.94	3.21

(1) The states that compose the Middle Atlantic census division are: NJ, NY, and PA.

Source: U.S. BLS, Employer Costs for Employee Compensation.

Over-the-year changes in wages and salaries

12-month percent changes in ECI



Source: U.S. BLS, Employment Cost Index.