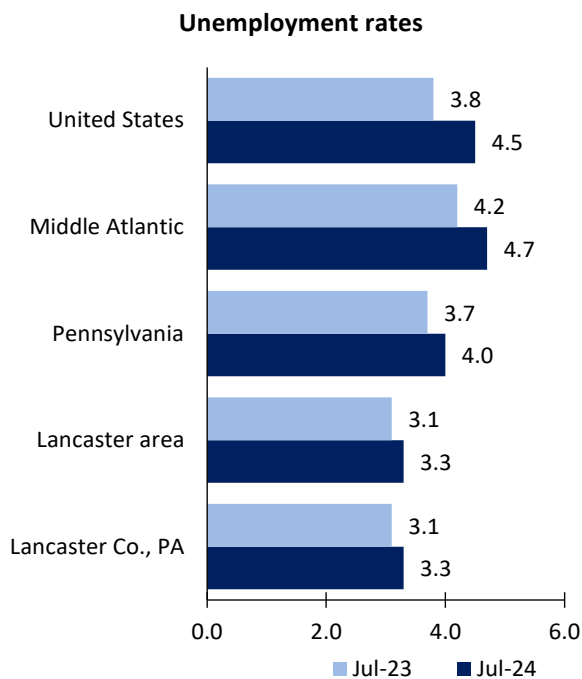


# Lancaster, PA, area Economic Summary

Updated August 29, 2024

This summary presents a sampling of economic information for the area; supplemental data are provided for regions and the nation. Subjects include **unemployment, employment, wages, prices, spending, and benefits**. All data are not seasonally adjusted and some may be subject to revision. Area definitions may differ by subject. For more area summaries and geographic definitions, see [www.bls.gov/regions/economic-summaries.htm](http://www.bls.gov/regions/economic-summaries.htm).

## Unemployment rates for the nation and selected areas



Source: U.S. BLS, Local Area Unemployment Statistics.

## Average weekly wages for all industries by county

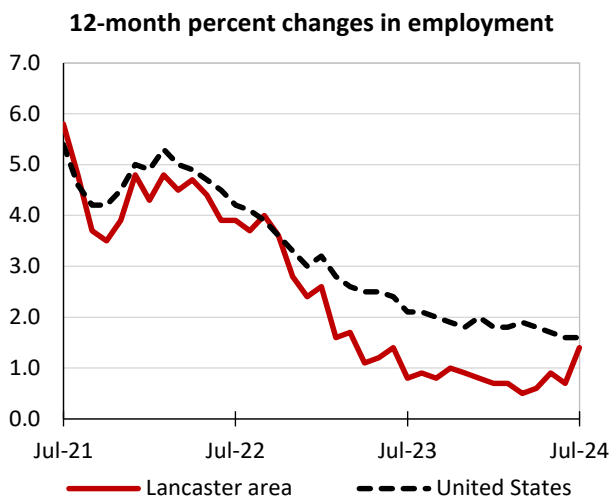
Lancaster area, fourth quarter 2023

(U.S. = \$1,435; Area = \$1,158)



Source: U.S. BLS, Quarterly Census of Employment and Wages.

## Over-the-year changes in employment on nonfarm payrolls and employment by major industry sector



Source: U.S. BLS, Current Employment Statistics.

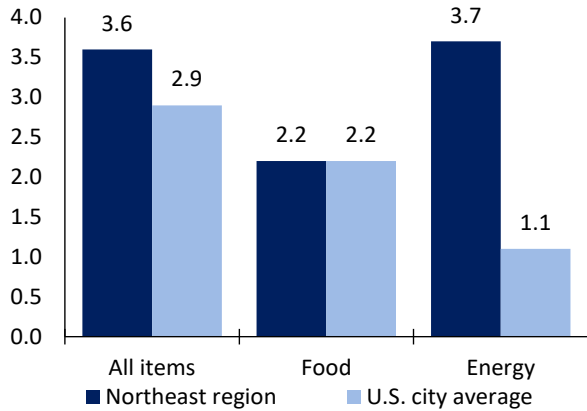
| Lancaster area employment<br>(number in thousands) | Jul. 2024 | Change from Jul. 2023 to Jul. 2024 |         |
|----------------------------------------------------|-----------|------------------------------------|---------|
|                                                    |           | Number                             | Percent |
| Total nonfarm                                      | 266.6     | 3.7                                | 1.4     |
| Mining, logging, and construction                  | 19.8      | -0.1                               | -0.5    |
| Manufacturing                                      | 37.7      | 0.1                                | 0.3     |
| Trade, transportation, and utilities               | 59.6      | 1.0                                | 1.7     |
| Information                                        | 2.6       | -0.1                               | -3.7    |
| Financial activities                               | 10.7      | 0.1                                | 0.9     |
| Professional and business services                 | 26.6      | -0.5                               | -1.8    |
| Education and health services                      | 50.7      | 2.1                                | 4.3     |
| Leisure and hospitality                            | 28.3      | 0.6                                | 2.2     |
| Other services                                     | 13.0      | 0.2                                | 1.6     |
| Government                                         | 17.6      | 0.3                                | 1.7     |

Source: U.S. BLS, Current Employment Statistics.



Over-the-year change in the prices paid by urban consumers for selected categories

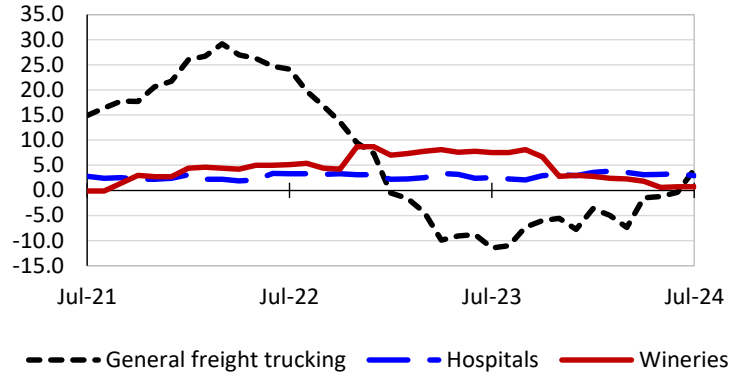
12-month percent change in CPI-U, July 2024



Source: U.S. BLS, Consumer Price Index.

Over-the-year changes in the selling prices received by producers for selected industries nationwide

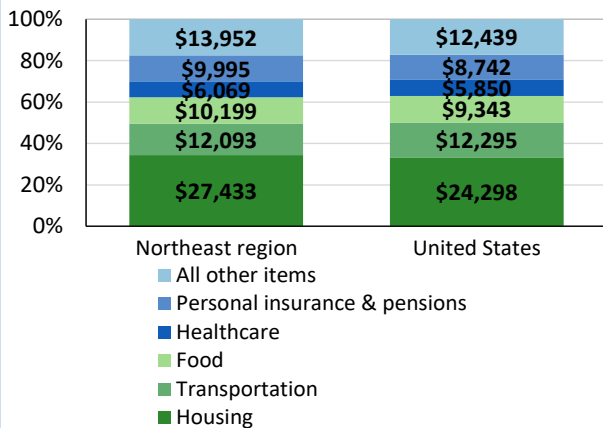
12-month percent changes in PPI



Source: U.S. BLS, Producer Price Index.

Average annual spending and percent distribution for selected categories

Average annual expenditures, United States and Northeast region, 2022



Source: U.S. BLS, Consumer Expenditure Survey.

Average hourly wages for selected occupations

| Occupation             | Lancaster area | United States |
|------------------------|----------------|---------------|
| All occupations        | \$26.71        | \$31.48       |
| Registered nurses      | 40.27          | 45.42         |
| Office clerks, general | 20.08          | 20.94         |
| Tellers                | 18.04          | 18.68         |
| Cooks, restaurant      | 15.56          | 17.34         |
| Bartenders             | 13.98          | 17.83         |
| Childcare workers      | 13.85          | 15.42         |

Source: U.S. BLS, Occupational Employment and Wage Statistics, May 2023.

Employer costs per hour worked for wages and selected employee benefits by geographic division

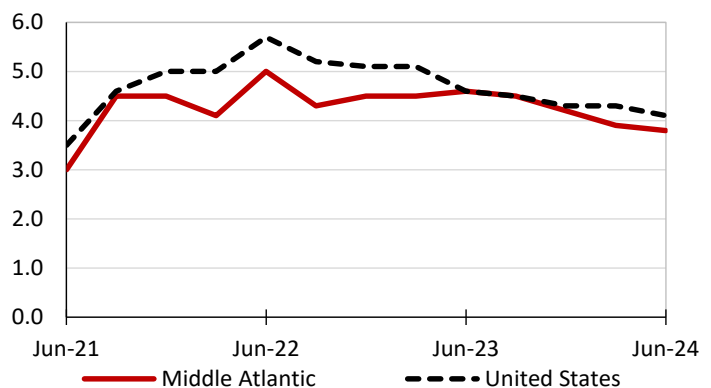
| Private industry, March 2024 | Middle Atlantic | United States |
|------------------------------|-----------------|---------------|
| Total compensation           | \$53.35         | \$43.78       |
| Wages and salaries           | 36.97           | 30.76         |
| Total benefits               | 16.38           | 13.02         |
| Paid leave                   | 4.39            | 3.31          |
| Vacation                     | 2.19            | 1.69          |
| Supplemental pay             | 1.87            | 1.77          |
| Insurance                    | 3.99            | 3.20          |
| Retirement and savings       | 2.20            | 1.52          |
| Legally required benefits    | 3.94            | 3.21          |

(1) The states that compose the Middle Atlantic census division are: NJ, NY, and PA.

Source: U.S. BLS, Employer Costs for Employee Compensation.

Over-the-year changes in wages and salaries

12-month percent changes in ECI



Source: U.S. BLS, Employment Cost Index.

