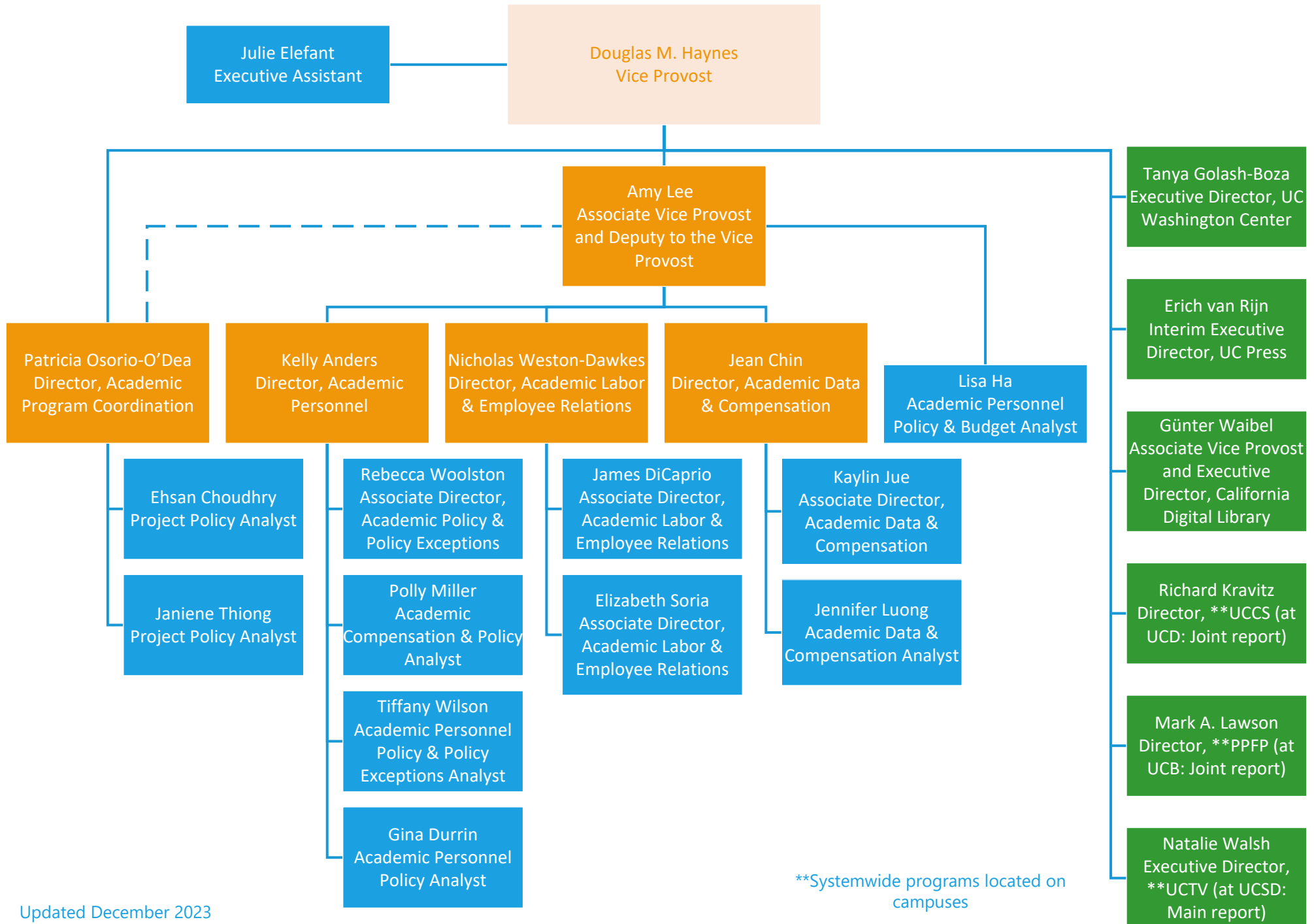


# Academic Personnel and Programs



## Academic Personnel and Programs Organizational Structure

Vice Provost Douglas M. Haynes is the head of the department of Academic Personnel and Programs. Associate Vice Provost Amy Lee is the Deputy to the Vice Provost. The department is organized as follows:

### ❖ Douglas M. Haynes -Vice Provost

- Amy Lee – Associate Vice Provost and Deputy to the Vice Provost
  - Lisa Ha – Academic Personnel Policy and Budget Analyst
  - Julie Elefant – Executive Assistant to the Vice Provost
- Kelly Anders – Director, Academic Personnel
  - Rebecca Woolston – Associate Director, Academic Policy and Policy Exceptions
  - Polly Miller – Academic Compensation and Policy Analyst
  - Tiffany Wilson – Academic Personnel Policy and Policy Exceptions Analyst
  - Gina Durrin – Academic Personnel Policy Analyst
- Nick Weston-Dawkes – Director, Academic Labor and Employee Relations
  - James DiCaprio – Associate Director, Academic Labor and Employee Relations
  - Elizabeth Soria – Associate Director, Academic Labor and Employee Relations
- Jean Chin – Director, Academic Data and Compensation
  - Kaylin Jue – Associate Director, Academic Data and Compensation
  - Jennifer Luong – Academic Data and Compensation Analyst
- Patricia Osorio-O’Dea – Director, Academic Program Coordination
  - Ehsan Choudhry – Project Policy Analyst
  - Janiene Thiong – Project Policy Analyst
- Tanya Golash-Boza – Executive Director, UC Washington Center
- Erich van Rijn – Executive Director, UC Press
- Gunter Waibel – Associate Vice Provost and Executive Director, California Digital Library
- Richard Kravitz – Director, UC Center Sacramento (UCCS located at UCD: joint report)
- Mark A. Lawson – Director, President’s Postdoctoral Fellowship Program (PPFP located at UCB: joint report)
- Natalie Walsh – Executive Director, UCTV (located at UCSD: main report)