

Table 15.1
Cancer of the Lung and Bronchus (Invasive)

Trends in SEER Incidence^{ab} and U.S. Mortality^c Using the Joinpoint Regression Program,
1975-2015 With up to Five Joinpoints, 1992-2015 With up to Four Joinpoints,
Both Sexes by Race/Ethnicity

	JP Trend 1		JP Trend 2		JP Trend 3		JP Trend 4		JP Trend 5		JP Trend 6		AAPC ^d	
	Years	APC	Years	APC	Years	APC	Years	APC	Years	APC	Years	APC	2006-15	2011-15
<u>SEER 9 Delay-Adjusted Incidence^a, 1975-2015</u>														
All Races	1975-82	2.5*	1982-91	0.9*	1991-07	-0.7*	2007-15	-2.2*					-2.0*	-2.2*
White	1975-82	2.6*	1982-91	1.1*	1991-07	-0.6*	2007-15	-2.1*					-1.9*	-2.1*
Black	1975-84	3.5*	1984-03	-0.6*	2003-15	-2.3*							-2.3*	-2.3*
<u>SEER 13 Delay-Adjusted Incidence^b, 1992-2015</u>														
All Races	1992-07	-1.0*	2007-15	-2.3*									-2.2*	-2.3*
White	1992-07	-0.9*	2007-15	-2.3*									-2.1*	-2.3*
Black	1992-08	-1.3*	2008-15	-3.2*									-2.8*	-3.2*
<u>SEER 9 Observed Incidence^a, 1975-2015</u>														
All Races	1975-82	2.5*	1982-91	0.9*	1991-07	-0.7*	2007-15	-2.3*					-2.1*	-2.3*
White	1975-82	2.6*	1982-91	1.1*	1991-07	-0.6*	2007-15	-2.3*					-2.1*	-2.3*
Black	1975-85	3.2*	1985-08	-0.9*	2008-15	-3.5*							-3.0*	-3.5*
<u>SEER 13 Observed Incidence^b, 1992-2015</u>														
All Races	1992-07	-1.0*	2007-15	-2.5*									-2.3*	-2.5*
White	1992-07	-0.9*	2007-15	-2.5*									-2.3*	-2.5*
White NH ^{ef}	1992-07	-0.7*	2007-15	-2.3*									-2.2*	-2.3*
Black	1992-08	-1.3*	2008-15	-3.5*									-3.0*	-3.5*
Black NH ^{ef}	1992-08	-1.2*	2008-15	-3.4*									-2.9*	-3.4*
API ^e	1992-05	-0.4	2005-15	-1.5*									-1.5*	-1.5*
AI/AN ^{eg}	1992-15	-1.2*											-1.2*	-1.2*
Hispanic ^f	1992-15	-1.3*											-1.3*	-1.3*
<u>U.S. Cancer Mortality^c, 1975-2015</u>														
All Races	1975-80	3.0*	1980-90	1.8*	1990-95	-0.2	1995-05	-1.0*	2005-12	-2.3*	2012-15	-3.4*	-2.7*	-3.1*
White	1975-80	2.9*	1980-90	1.8*	1990-95	-0.1	1995-05	-0.8*	2005-10	-2.1*	2010-15	-2.9*	-2.5*	-2.9*
Black	1975-81	3.5*	1981-90	1.9*	1990-95	-0.7*	1995-04	-1.7*	2004-13	-2.7*	2013-15	-5.0*	-3.2*	-3.8*
<u>U.S. Cancer Mortality^c, 1992-2015</u>														
All Races	1992-04	-0.8*	2004-10	-2.1*	2010-15	-3.0*							-2.6*	-3.0*
White	1992-03	-0.7*	2003-09	-1.7*	2009-15	-2.8*							-2.4*	-2.8*
White NH ^{ef}	1992-03	-0.5*	2003-09	-1.5*	2009-15	-2.7*							-2.3*	-2.7*
Black	1992-97	-1.1*	1997-04	-1.8*	2004-13	-2.6*	2013-15	-5.0*					-3.2*	-3.8*
Black NH ^{ef}	1992-95	-0.6	1995-04	-1.7*	2004-13	-2.6*	2013-15	-5.0*					-3.1*	-3.8*
API ^e	1992-08	-1.1*	2008-15	-1.8*									-1.6*	-1.8*
AI/AN ^{eg}	1992-08	0.2	2008-15	-2.4*									-1.8*	-2.4*
Hispanic ^f	1992-95	1.4	1995-04	-1.2*	2004-15	-2.4*							-2.4*	-2.4*

Joinpoint Regression Program Version 4.6, February 2018, National Cancer Institute. (<https://surveillance.cancer.gov/joinpoint/>).

The APC is the Annual Percent Change based on rates age-adjusted to the 2000 US Std Population (19 age groups - Census P25-1130).

Trends are from the SEER 9 areas (San Francisco, Connecticut, Detroit, Hawaii, Iowa, New Mexico, Seattle, Utah, and Atlanta).

Trends are from the SEER 13 areas (SEER 9 Areas, Los Angeles, San Jose-Monterey, Rural Georgia, and the Alaska Native Registry).

Trends are from US Mortality Files, National Center for Health Statistics, Centers for Disease Control and Prevention.

The AAPC is the Average Annual Percent Change and is based on the APCs calculated by Joinpoint.

API - Asian/Pacific Islander, AI/AN - American Indian/Alaska Native, NH - Non-Hispanic

Hispanic and Non-Hispanic are not mutually exclusive from whites, blacks, Asian/Pacific Islanders, and American Indians/Alaska

Natives. Incidence data for Hispanics and Non-Hispanics are based on NHIA and exclude cases from the Alaska Native Registry.

The Hispanic and Non-Hispanic mortality trends exclude deaths from New Hampshire and Oklahoma.

Data for American Indian/Alaska Native are based on the CHSDA (Contract Health Service Delivery Area) counties.

* The APC/AAPC is significantly different from zero ($p < .05$).

- Joinpoint regression line analysis could not be performed on data series.

Table 15.2
Cancer of the Lung and Bronchus (Invasive)

Trends in SEER Incidence^{ab} and U.S. Mortality^c Using the Joinpoint Regression Program,
1975-2015 With up to Five Joinpoints, 1992-2015 With up to Four Joinpoints,
Males by Race/Ethnicity

	JP Trend 1		JP Trend 2		JP Trend 3		JP Trend 4		JP Trend 5		JP Trend 6		AAPC ^d	
	Years	APC	Years	APC	Years	APC	Years	APC	Years	APC	Years	APC	2006-15	2011-15
<u>SEER 9 Delay-Adjusted Incidence^a, 1975-2015</u>														
All Races	1975-82	1.5*	1982-91	-0.5*	1991-08	-1.7*	2008-15	-2.9*					-2.6*	-2.9*
White	1975-81	1.5*	1981-90	-0.2	1990-08	-1.7*	2008-15	-2.8*					-2.6*	-2.8*
Black	1975-84	2.9*	1984-98	-1.4*	1998-15	-2.9*							-2.9*	-2.9*
<u>SEER 13 Delay-Adjusted Incidence^b, 1992-2015</u>														
All Races	1992-08	-1.9*	2008-15	-3.0*									-2.7*	-3.0*
White	1992-08	-1.9*	2008-15	-2.9*									-2.7*	-2.9*
Black	1992-15	-2.7*											-2.7*	-2.7*
<u>SEER 9 Observed Incidence^a, 1975-2015</u>														
All Races	1975-82	1.5*	1982-91	-0.5*	1991-08	-1.7*	2008-15	-3.1*					-2.8*	-3.1*
White	1975-81	1.5*	1981-90	-0.2	1990-09	-1.7*	2009-15	-3.3*					-2.8*	-3.3*
Black	1975-84	2.9*	1984-98	-1.3*	1998-15	-3.0*							-3.0*	-3.0*
<u>SEER 13 Observed Incidence^b, 1992-2015</u>														
All Races	1992-08	-1.9*	2008-15	-3.2*									-2.9*	-3.2*
White	1992-09	-1.9*	2009-15	-3.4*									-2.9*	-3.4*
White NH ^{ef}	1992-09	-1.8*	2009-15	-3.2*									-2.7*	-3.2*
Black	1992-09	-2.4*	2009-15	-4.8*									-4.0*	-4.8*
Black NH ^{ef}	1992-09	-2.4*	2009-15	-4.6*									-3.9*	-4.6*
API ^e	1992-05	-0.8*	2005-15	-2.2*									-2.2*	-2.2*
AI/AN ^{eg}	1992-15	-1.8*											-1.8*	-1.8*
Hispanic ^f	1992-15	-2.1*											-2.1*	-2.1*
<u>U.S. Cancer Mortality^c, 1975-2015</u>														
All Races	1975-78	2.4*	1978-84	1.2*	1984-91	0.3*	1991-05	-1.9*	2005-12	-3.0*	2012-15	-4.0*	-3.3*	-3.7*
White	1975-80	1.9*	1980-87	0.7*	1987-91	0.1	1991-05	-1.7*	2005-12	-2.9*	2012-15	-3.9*	-3.2*	-3.6*
Black	1975-82	2.9*	1982-90	1.3*	1990-94	-1.3	1994-03	-2.7*	2003-13	-3.4*	2013-15	-5.4*	-3.9*	-4.4*
<u>U.S. Cancer Mortality^c, 1992-2015</u>														
All Races	1992-05	-1.9*	2005-12	-3.0*	2012-15	-4.0*							-3.3*	-3.7*
White	1992-05	-1.8*	2005-11	-2.8*	2011-15	-3.7*							-3.2*	-3.7*
White NH ^{ef}	1992-05	-1.6*	2005-12	-2.8*	2012-15	-3.8*							-3.1*	-3.6*
Black	1992-94	-1.0	1994-03	-2.7*	2003-13	-3.4*	2013-15	-5.4*					-3.8*	-4.4*
Black NH ^{ef}	1992-94	-0.6	1994-04	-2.7*	2004-13	-3.3*	2013-15	-5.4*					-3.8*	-4.4*
API ^e	1992-08	-1.4*	2008-15	-2.7*									-2.4*	-2.7*
AI/AN ^{eg}	1992-15	-1.2*											-1.2*	-1.2*
Hispanic ^f	1992-94	3.2	1994-05	-2.0*	2005-15	-3.4*							-3.4*	-3.4*

Joinpoint Regression Program Version 4.6, February 2018, National Cancer Institute. (<https://surveillance.cancer.gov/joinpoint/>).

The APC is the Annual Percent Change based on rates age-adjusted to the 2000 US Std Population (19 age groups - Census P25-1130). Trends are from the SEER 9 areas (San Francisco, Connecticut, Detroit, Hawaii, Iowa, New Mexico, Seattle, Utah, and Atlanta).

Trends are from the SEER 13 areas (SEER 9 Areas, Los Angeles, San Jose-Monterey, Rural Georgia, and the Alaska Native Registry).

Trends are from US Mortality Files, National Center for Health Statistics, Centers for Disease Control and Prevention.

The AAPC is the Average Annual Percent Change and is based on the APCs calculated by Joinpoint.

API - Asian/Pacific Islander, AI/AN - American Indian/Alaska Native, NH - Non-Hispanic

Hispanic and Non-Hispanic are not mutually exclusive from whites, blacks, Asian/Pacific Islanders, and American Indians/Alaska Natives. Incidence data for Hispanics and Non-Hispanics are based on NHIA and exclude cases from the Alaska Native Registry.

The Hispanic and Non-Hispanic mortality trends exclude deaths from New Hampshire and Oklahoma.

Data for American Indian/Alaska Native are based on the CHSDA (Contract Health Service Delivery Area) counties.

* The APC/AAPC is significantly different from zero ($p < .05$).

- Joinpoint regression line analysis could not be performed on data series.

Table 15.3
Cancer of the Lung and Bronchus (Invasive)

Trends in SEER Incidence^{ab} and U.S. Mortality^c Using the Joinpoint Regression Program,
1975-2015 With up to Five Joinpoints, 1992-2015 With up to Four Joinpoints,
Females by Race/Ethnicity

	JP Trend 1		JP Trend 2		JP Trend 3		JP Trend 4		JP Trend 5		JP Trend 6		AAPC ^d	
	Years	APC	Years	APC	Years	APC	Years	APC	Years	APC	Years	APC	2006-15	2011-15
<u>SEER 9 Delay-Adjusted Incidence^a, 1975-2015</u>														
All Races	1975-82	5.6*	1982-91	3.4*	1991-06	0.5*	2006-15	-1.5*					-1.5*	-1.5*
White	1975-88	4.8*	1988-97	1.4*	1997-07	0.2	2007-15	-1.5*					-1.3*	-1.5*
Black	1975-90	4.2*	1990-06	0.6*	2006-15	-1.8*							-1.8*	-1.8*
<u>SEER 13 Delay-Adjusted Incidence^b, 1992-2015</u>														
All Races	1992-06	0.1	2006-15	-1.7*									-1.7*	-1.7*
White	1992-97	0.8	1997-07	-0.2	2007-15	-1.7*							-1.6*	-1.7*
Black	1992-05	0.8*	2005-15	-1.7*									-1.7*	-1.7*
<u>SEER 9 Observed Incidence^a, 1975-2015</u>														
All Races	1975-82	5.6*	1982-91	3.4*	1991-07	0.4*	2007-15	-1.8*					-1.6*	-1.8*
White	1975-88	4.8*	1988-97	1.4*	1997-07	0.3	2007-15	-1.7*					-1.5*	-1.7*
Black	1975-90	4.2*	1990-06	0.6*	2006-15	-1.9*							-1.9*	-1.9*
<u>SEER 13 Observed Incidence^b, 1992-2015</u>														
All Races	1992-07	0.0	2007-15	-2.0*									-1.8*	-2.0*
White	1992-07	0.0	2007-15	-2.0*									-1.8*	-2.0*
White NH ^{ef}	1992-07	0.2*	2007-15	-1.9*									-1.7*	-1.9*
Black	1992-05	0.8*	2005-15	-1.9*									-1.9*	-1.9*
Black NH ^{ef}	1992-05	0.8*	2005-15	-1.9*									-1.9*	-1.9*
API ^e	1992-15	0.1											0.1	0.1
AI/AN ^{eg}	1992-05	2.4	2005-15	-3.6*									-3.6*	-3.6*
Hispanic ^f	1992-15	-0.4*											-0.4*	-0.4*
<u>U.S. Cancer Mortality^c, 1975-2015</u>														
All Races	1975-82	6.0*	1982-90	4.2*	1990-95	1.7*	1995-03	0.3*	2003-09	-1.1*	2009-15	-2.3*	-1.9*	-2.3*
White	1975-83	5.8*	1983-90	4.1*	1990-94	2.1*	1994-03	0.5*	2003-09	-1.0*	2009-15	-2.2*	-1.8*	-2.2*
Black	1975-82	6.3*	1982-92	3.7*	1992-04	0.3*	2004-13	-1.9*	2013-15	-4.7*			-2.5*	-3.3*
<u>U.S. Cancer Mortality^c, 1992-2015</u>														
All Races	1992-95	1.3*	1995-03	0.4*	2003-09	-1.1*	2009-15	-2.3*					-1.9*	-2.3*
White	1992-95	1.4*	1995-03	0.5*	2003-09	-0.9*	2009-15	-2.2*					-1.8*	-2.2*
White NH ^{ef}	1992-95	1.7*	1995-03	0.6*	2003-09	-0.8*	2009-15	-2.1*					-1.7*	-2.1*
Black	1992-04	0.4*	2004-13	-1.9*	2013-15	-4.7*							-2.5*	-3.3*
Black NH ^{ef}	1992-97	1.3*	1997-05	0.0	2005-13	-1.8*	2013-15	-4.6*					-2.5*	-3.2*
API ^e	1992-15	-0.5*											-0.5*	-0.5*
AI/AN ^{eg}	1992-05	2.1*	2005-15	-1.7*									-1.7*	-1.7*
Hispanic ^f	1992-03	0.5	2003-15	-1.2*									-1.2*	-1.2*

Joinpoint Regression Program Version 4.6, February 2018, National Cancer Institute. (<https://surveillance.cancer.gov/joinpoint/>).

The APC is the Annual Percent Change based on rates age-adjusted to the 2000 US Std Population (19 age groups - Census P25-1130).

Trends are from the SEER 9 areas (San Francisco, Connecticut, Detroit, Hawaii, Iowa, New Mexico, Seattle, Utah, and Atlanta).

Trends are from the SEER 13 areas (SEER 9 Areas, Los Angeles, San Jose-Monterey, Rural Georgia, and the Alaska Native Registry).

Trends are from US Mortality Files, National Center for Health Statistics, Centers for Disease Control and Prevention.

The AAPC is the Average Annual Percent Change and is based on the APCs calculated by Joinpoint.

API - Asian/Pacific Islander, AI/AN - American Indian/Alaska Native, NH - Non-Hispanic

Hispanic and Non-Hispanic are not mutually exclusive from whites, blacks, Asian/Pacific Islanders, and American Indians/Alaska

Natives. Incidence data for Hispanics and Non-Hispanics are based on NHIA and exclude cases from the Alaska Native Registry.

The Hispanic and Non-Hispanic mortality trends exclude deaths from New Hampshire and Oklahoma.

Data for American Indian/Alaska Native are based on the CHSDA (Contract Health Service Delivery Area) counties.

* The APC/AAPC is significantly different from zero ($p < .05$).

- Joinpoint regression line analysis could not be performed on data series.

a
b
c
d
e
f
g
*
-

Table 15.4
Small Cell Cancer of the Lung and Bronchus^a(Invasive) and Non-Small Cell Cancer of the Lung and Bronchus^b(Invasive)

Trends in SEER 9 Observed Incidence^c Using the Joinpoint Regression Program,
1975-2015 With up to Five Joinpoints,
By Race and Sex

		JP Trend 1		JP Trend 2		JP Trend 3		JP Trend 4		JP Trend 5		JP Trend 6		AAPC ^d
		Years	APC	Years	APC	Years	APC	Years	APC	Years	APC	Years	APC	2011-15
<u>SEER 9 Observed Incidence^c for Small Cell Cancer of the Lung and Bronchus^a, 1975-2015</u>														
All Races	Both Sexes	1975-82	6.2*	1982-89	1.3*	1989-15	-2.4*							-2.4*
All Races	Male	1975-81	5.6*	1981-88	0.0	1988-15	-3.1*							-3.1*
All Races	Female	1975-82	9.6*	1982-91	3.1*	1991-15	-1.9*							-1.9*
White	Both Sexes	1975-82	6.3*	1982-89	1.5*	1989-15	-2.3*							-2.3*
White	Male	1975-78	8.9*	1978-86	2.0*	1986-15	-3.0*							-3.0*
White	Female	1975-82	10.2*	1982-91	3.2*	1991-15	-1.7*							-1.7*
Black	Both Sexes	1975-86	4.9*	1986-15	-2.5*									-2.5*
Black	Male	1975-85	5.0*	1985-15	-3.4*									-3.4*
Black	Female	1975-91	4.6*	1991-15	-1.9*									-1.9*
<u>SEER 9 Observed Incidence^c for Non-Small Cell Cancer of the Lung and Bronchus^b, 1975-2015</u>														
All Races	Both Sexes	1975-80	5.2*	1980-88	1.7*	1988-00	-0.9*	2000-03	6.2*	2003-15	-1.7*			-1.7*
All Races	Male	1975-84	2.9*	1984-00	-1.7*	2000-03	4.7	2003-15	-2.5*					-2.5*
All Races	Female	1975-88	5.2*	1988-99	0.5	1999-05	3.9*	2005-15	-1.3*					-1.3*
White	Both Sexes	1975-79	6.1*	1979-88	1.9*	1988-00	-0.8*	2000-03	6.1*	2003-15	-1.7*			-1.7*
White	Male	1975-80	4.4*	1980-88	0.5	1988-99	-2.3*	1999-02	5.3	2002-15	-2.3*			-2.3*
White	Female	1975-78	10.4*	1978-88	4.9*	1988-00	0.7*	2000-03	7.1*	2003-15	-0.9*			-0.9*
Black	Both Sexes	1975-84	4.5*	1984-00	-1.2*	2000-03	5.6	2003-15	-2.3*					-2.3*
Black	Male	1975-84	3.9*	1984-00	-2.2*	2000-03	4.3	2003-15	-3.3*					-3.3*
Black	Female	1975-90	5.0*	1990-97	-1.5	1997-05	4.0*	2005-15	-1.8*					-1.8*

Joinpoint Regression Program Version 4.6, February 2018, National Cancer Institute. (<https://surveillance.cancer.gov/joinpoint/>).

The APC is the Annual Percent Change based on rates age-adjusted to the 2000 US Std Population (19 age groups - Census P25-1130).

^a Small Cell Cancer of the Lung and Bronchus includes histologies 8002, 8041-8045.

^b Non-Small Cell Cancer of the Lung and Bronchus includes histologies 8003-8004, 8012-8015, 8021-8022, 8030-8035, 8046, 8050-8052, 8070-8076, 8078, 8082-8084, 8090, 8094, 8120, 8123, 8140-8141, 8143-8145, 8147, 8190, 8200-8201, 8211, 8240-8241, 8243-8246, 8249-8255, 8260, 8290, 8310, 8320, 8323, 8333, 8401, 8430,8440,8470-8471,8480-8481, 8490, 8503, 8507, 8525, 8550, 8560, 8562, 8570-8572, 8574-8576.

^c Trends are from the SEER 9 areas (San Francisco, Connecticut, Detroit, Hawaii, Iowa, New Mexico, Seattle, Utah, and Atlanta).

^d The AAPC is the Average Annual Percent Change and is based on the APCs calculated by Joinpoint.

* The APC/AAPC is significantly different from zero (p<.05).

- Joinpoint regression line analysis could not be performed on data series.

Table 15.5
Cancer of the Lung and Bronchus (Invasive)

Delay-adjusted SEER Incidence^a Rates by Year, Race and Sex

Year of Diagnosis:	All Races			Whites			Blacks		
	Total	Males	Females	Total	Males	Females	Total	Males	Females
1975-1979	56.22	94.32	28.33	55.60	93.59	28.39	72.01	125.85	30.72
1980	60.65	99.96	32.22	59.42	97.69	32.37	86.62	151.43	38.25
1981	62.03	99.41	35.11	61.53	98.44	35.52	82.31	142.96	37.45
1982	63.29	100.69	36.73	63.05	99.68	37.68	80.37	141.06	35.68
1983	63.45	99.46	37.88	63.03	97.63	39.09	86.62	151.34	39.49
1984	65.49	102.05	39.45	64.33	99.89	39.61	92.93	158.84	44.82
1985	64.61	98.59	40.25	63.97	96.84	40.87	89.56	149.68	46.04
1986	65.77	99.03	42.29	65.14	97.32	42.94	92.94	156.27	48.67
1987	67.90	101.51	44.16	68.08	100.66	45.49	84.76	143.59	43.28
1988	68.05	98.70	46.33	68.26	97.92	47.73	88.24	144.93	48.26
1989	67.56	97.96	46.12	67.57	97.06	47.26	89.04	142.77	51.37
1990	68.08	96.91	47.79	68.23	96.11	48.96	86.78	137.17	52.13
1991	69.19	97.20	49.58	68.96	95.88	50.63	93.13	144.76	57.03
1992	69.46	97.21	49.85	68.92	94.90	51.04	93.99	148.73	56.06
1993	67.75	93.95	49.15	67.80	92.51	50.63	86.36	135.35	52.54
1994	67.17	90.93	50.54	67.28	90.13	51.61	87.16	131.39	56.53
1995	66.85	89.82	50.43	67.09	87.95	52.43	85.87	138.94	50.12
1996	66.46	87.97	51.24	66.78	86.66	52.97	84.57	128.35	55.73
1997	66.62	86.31	52.59	67.20	84.80	54.93	82.27	129.54	50.49
1998	67.55	88.02	52.99	68.00	86.56	55.04	87.52	131.01	58.20
1999	65.84	84.58	52.50	66.29	83.26	54.42	84.56	122.46	58.85
2000	64.14	82.11	51.23	64.66	80.77	53.22	80.71	115.09	57.81
2001	64.15	81.40	51.64	65.02	81.05	53.47	80.67	114.60	57.82
2002	64.06	80.43	52.50	64.79	79.84	54.23	81.44	113.10	60.64
2003	64.75	81.02	53.09	65.49	79.53	55.65	81.20	119.56	55.73
2004	62.24	76.28	52.07	62.79	75.31	53.77	76.16	105.27	57.02
2005	63.03	75.82	53.84	64.01	75.54	55.79	74.69	97.97	59.49
2006	62.29	74.30	53.43	62.83	73.09	55.36	76.62	100.98	59.82
2007	62.11	73.77	53.60	63.14	72.89	56.06	74.22	100.80	56.62
2008	60.44	72.22	51.90	61.19	70.80	54.34	75.13	103.62	56.14
2009	60.08	70.78	52.34	60.76	69.83	54.20	74.45	98.35	58.71
2010	57.83	68.12	50.19	58.93	67.92	52.21	67.25	85.92	54.97
2011	56.39	65.82	49.48	57.41	65.47	51.51	66.10	86.77	52.70
2012	55.44	64.26	48.89	55.86	63.13	50.48	69.90	89.83	56.45
2013	54.35	62.02	48.66	55.06	61.09	50.61	63.80	82.00	51.66
2014	53.50	60.64	48.24	54.90	60.72	50.70	60.44	75.35	50.64
2015	52.05	59.04	46.80	52.99	58.39	48.95	60.35	76.27	49.96

Reference: [Cancer Incidence Rates Adjusted for Reporting Delay](#).

Individual rates for diagnosis years 1975-1979 available in web browser version of [Cancer Statistics Review](#).

SEER 9 areas (San Francisco, Connecticut, Detroit, Hawaii, Iowa, New Mexico, Seattle, Utah, and Atlanta).

Rates are per 100,000 and are age-adjusted to the 2000 US Std Population (19 age groups - Census P25-1130).

Delay-adjusted rate is not shown for observed rates based on less than 16 cases for the time interval.

^a

-

Table 15.6
Cancer of the Lung and Bronchus (Invasive)

Age-adjusted SEER Incidence^a Rates by Year, Race and Sex

Year of Diagnosis:	All Races			Whites			Blacks		
	Total	Males	Females	Total	Males	Females	Total	Males	Females
1975-2015	61.97	83.27	46.31	62.33	82.68	47.47	77.44	115.47	51.03
1975-1979	56.22	94.32	28.33	55.60	93.59	28.39	72.01	125.85	30.72
1980	60.65	99.96	32.22	59.42	97.69	32.37	86.62	151.43	38.25
1981	62.03	99.41	35.11	61.53	98.44	35.52	82.31	142.96	37.45
1982	63.29	100.69	36.73	63.05	99.68	37.68	80.37	141.06	35.68
1983	63.45	99.46	37.88	63.03	97.63	39.09	86.62	151.34	39.49
1984	65.49	102.05	39.45	64.33	99.89	39.61	92.93	158.84	44.82
1985	64.61	98.59	40.25	63.97	96.84	40.87	89.56	149.68	46.04
1986	65.77	99.03	42.29	65.14	97.32	42.94	92.94	156.27	48.67
1987	67.90	101.51	44.16	68.08	100.66	45.49	84.76	143.59	43.28
1988	68.05	98.70	46.33	68.26	97.92	47.73	88.24	144.93	48.26
1989	67.56	97.96	46.12	67.57	97.06	47.26	89.04	142.77	51.37
1990	68.08	96.91	47.79	68.23	96.11	48.96	86.78	137.17	52.13
1991	69.19	97.20	49.58	68.96	95.88	50.63	93.13	144.76	57.03
1992	69.46	97.21	49.85	68.92	94.90	51.04	93.99	148.73	56.06
1993	67.75	93.95	49.15	67.80	92.51	50.63	86.36	135.35	52.54
1994	67.17	90.93	50.54	67.28	90.13	51.61	87.16	131.39	56.53
1995	66.85	89.82	50.43	67.09	87.95	52.43	85.87	138.94	50.12
1996	66.46	87.97	51.24	66.78	86.66	52.97	84.57	128.35	55.73
1997	66.62	86.31	52.59	67.20	84.80	54.93	82.27	129.54	50.49
1998	67.55	88.02	52.99	68.00	86.56	55.04	87.52	131.01	58.20
1999	65.84	84.58	52.50	66.29	83.26	54.42	84.56	122.46	58.85
2000	64.14	82.11	51.23	64.66	80.77	53.22	80.71	115.09	57.81
2001	64.15	81.40	51.64	65.02	81.05	53.47	80.67	114.60	57.82
2002	64.06	80.43	52.50	64.79	79.84	54.23	81.44	113.10	60.64
2003	64.75	81.02	53.09	65.49	79.53	55.65	81.20	119.56	55.73
2004	62.24	76.28	52.07	62.79	75.31	53.77	76.16	105.27	57.02
2005	63.03	75.82	53.84	64.01	75.54	55.79	74.69	97.97	59.49
2006	62.29	74.30	53.43	62.83	73.09	55.36	76.62	100.98	59.82
2007	62.08	73.73	53.57	63.10	72.85	56.02	74.13	100.68	56.55
2008	60.37	72.14	51.83	61.11	70.71	54.28	74.96	103.38	56.01
2009	59.97	70.65	52.25	60.65	69.71	54.10	74.19	98.01	58.50
2010	57.69	67.96	50.07	58.79	67.76	52.08	66.94	85.53	54.71
2011	56.22	65.62	49.33	57.23	65.27	51.35	65.73	86.28	52.41
2012	55.24	64.02	48.71	55.65	62.90	50.30	69.40	89.17	56.06
2013	54.03	61.66	48.37	54.73	60.73	50.32	63.21	81.26	51.17
2014	53.01	60.08	47.80	54.37	60.13	50.21	59.62	74.32	49.95
2015	50.99	57.82	45.86	51.85	57.12	47.91	58.85	74.37	48.72

^a Individual rates for diagnosis years 1975-1979 available in web browser version of [Cancer Statistics Review](#).
SEER 9 areas (San Francisco, Connecticut, Detroit, Hawaii, Iowa, New Mexico, Seattle, Utah, and Atlanta).
Rates are per 100,000 and are age-adjusted to the 2000 US Std Population (19 age groups - Census P25-1130).
- Statistic not shown. Rate based on less than 16 cases for the time interval.

Table 15.7
Small Cell Cancer of the Lung and Bronchus (Invasive)
Age-adjusted SEER Incidence^a Rates by Year, Race and Sex

Year of Diagnosis:	All Races			Whites			Blacks		
	Total	Males	Females	Total	Males	Females	Total	Males	Females
1975-2015	8.56	10.70	6.96	9.07	11.14	7.53	8.08	11.03	6.03
1975-1979	7.77	12.14	4.47	7.97	12.49	4.61	7.57	11.77	4.35
1980	9.11	14.20	5.25	9.34	14.40	5.56	9.99	17.53	4.38
1981	9.74	14.59	6.13	10.03	14.87	6.48	9.28	15.87	4.34
1982	10.44	15.00	7.17	10.81	15.36	7.62	9.69	16.08	4.92
1983	10.39	14.92	7.10	10.78	15.09	7.66	9.23	15.20	4.95
1984	10.71	15.24	7.41	11.07	15.71	7.76	10.41	14.99	6.86
1985	10.47	14.98	7.10	10.80	15.26	7.52	11.12	17.90	6.27
1986	11.22	15.57	7.98	11.57	16.05	8.27	12.26	17.70	8.35
1987	10.67	14.15	8.22	11.18	14.57	8.86	9.68	14.61	6.20
1988	11.38	15.28	8.53	11.91	15.62	9.23	10.49	17.86	5.30
1989	11.26	14.86	8.70	11.71	15.25	9.23	12.07	17.67	8.35
1990	10.67	13.86	8.40	11.28	14.49	9.06	9.35	13.70	6.21
1991	11.31	13.99	9.39	11.71	14.32	9.88	12.34	15.92	10.00
1992	10.51	13.41	8.45	10.97	13.85	8.96	10.22	13.32	8.05
1993	10.03	12.34	8.34	10.48	12.64	8.94	9.43	13.36	6.74
1994	9.77	11.69	8.42	10.24	11.97	9.05	9.95	13.53	7.50
1995	9.87	12.30	8.12	10.37	12.64	8.73	9.50	13.89	6.61
1996	9.72	12.09	7.98	10.28	12.48	8.64	8.80	12.02	6.84
1997	9.53	10.86	8.64	10.11	11.12	9.48	7.86	10.82	6.05
1998	9.29	10.86	8.14	9.86	11.28	8.82	9.50	12.26	7.55
1999	8.82	10.06	7.97	9.33	10.25	8.78	8.25	11.21	6.05
2000	8.80	10.45	7.59	9.28	10.85	8.13	9.59	11.80	8.02
2001	8.37	9.86	7.33	8.91	10.35	7.93	8.57	10.91	6.89
2002	8.29	9.39	7.54	8.98	9.86	8.39	7.21	9.80	5.71
2003	8.22	9.12	7.60	8.73	9.38	8.33	7.93	9.50	6.83
2004	8.12	9.00	7.49	8.52	9.25	8.00	8.64	10.08	7.75
2005	7.59	8.69	6.82	8.22	9.24	7.51	6.63	7.78	5.88
2006	7.69	8.53	7.08	8.25	8.84	7.86	6.83	8.19	5.89
2007	7.68	8.60	7.02	8.33	8.96	7.92	7.10	9.40	5.44
2008	7.09	7.96	6.46	7.58	8.11	7.20	6.38	8.85	4.87
2009	7.13	7.78	6.69	7.60	8.10	7.27	7.51	8.36	6.94
2010	6.81	7.49	6.34	7.46	7.98	7.13	5.89	6.87	5.15
2011	6.27	6.85	5.86	6.77	7.10	6.56	5.28	6.45	4.49
2012	6.46	7.20	5.89	6.93	7.55	6.44	6.65	8.33	5.63
2013	6.36	7.14	5.81	6.90	7.51	6.49	5.46	6.79	4.66
2014	6.04	6.38	5.82	6.56	6.64	6.58	5.85	6.66	5.24
2015	5.89	6.21	5.69	6.37	6.47	6.37	5.78	6.31	5.36

Note: Small Cell Cancer of the Lung and Bronchus includes histologies 8002, 8041-8045.
Individual rates for diagnosis years 1975-1979 available in web browser version of [Cancer Statistics Review](#).
^a SEER 9 areas (San Francisco, Connecticut, Detroit, Hawaii, Iowa, New Mexico, Seattle, Utah, and Atlanta).
Rates are per 100,000 and are age-adjusted to the 2000 US Std Population (19 age groups - Census P25-1130).
- Statistic not shown. Rate based on less than 16 cases for the time interval.

Table 15.8
Non-Small Cell Cancer of the Lung and Bronchus (Invasive)
Age-adjusted SEER Incidence^a Rates by Year, Race and Sex

Year of Diagnosis:	All Races			Whites			Blacks		
	Total	Males	Females	Total	Males	Females	Total	Males	Females
1975-2015	42.45	56.99	31.58	42.20	55.96	31.96	55.66	82.97	36.40
1975-1979	34.57	57.32	17.36	33.74	55.99	17.26	48.45	86.22	19.14
1980	39.34	64.32	20.69	38.13	62.16	20.55	59.12	103.14	25.80
1981	40.54	64.79	22.59	40.00	63.85	22.68	54.97	94.67	24.97
1982	41.41	66.26	23.20	40.81	65.02	23.49	55.81	97.81	24.13
1983	41.84	66.20	24.06	41.16	64.37	24.68	60.76	107.14	26.02
1984	43.46	68.00	25.50	42.07	65.55	25.26	67.33	116.65	30.98
1985	43.09	65.84	26.35	42.24	63.87	26.58	63.60	107.17	31.77
1986	43.12	64.55	27.46	42.34	62.64	27.82	64.72	109.68	32.57
1987	45.63	69.47	28.35	45.27	68.19	28.88	60.52	104.01	29.58
1988	45.12	65.80	30.02	45.01	65.07	30.65	59.91	96.94	33.34
1989	44.26	64.40	29.72	43.87	63.33	30.12	61.00	97.84	34.69
1990	44.74	63.59	31.09	44.42	62.64	31.39	59.87	92.31	37.15
1991	44.92	63.76	31.37	44.14	61.90	31.68	64.84	102.15	38.09
1992	45.24	63.86	31.70	44.40	61.45	32.28	64.81	104.87	36.51
1993	43.65	61.01	30.96	43.48	59.80	31.70	56.77	89.94	33.69
1994	43.03	58.55	31.84	42.69	57.33	32.35	58.55	90.39	35.94
1995	42.40	57.07	31.68	42.19	55.56	32.59	58.29	93.15	34.32
1996	41.52	54.46	32.10	41.44	53.38	32.92	54.17	81.30	35.44
1997	41.36	54.53	31.60	41.49	53.38	32.77	53.59	84.62	32.39
1998	42.11	55.40	32.51	42.35	54.41	33.79	54.84	83.06	35.68
1999	40.49	52.61	31.60	40.52	51.58	32.45	54.31	79.49	37.09
2000	38.58	49.68	30.49	38.76	48.88	31.52	48.96	69.38	34.98
2001	46.74	59.99	36.93	47.06	59.33	37.96	60.19	86.71	42.50
2002	46.92	59.21	37.99	46.89	58.28	38.66	62.41	85.95	46.45
2003	47.36	60.01	38.09	47.59	58.51	39.72	61.64	92.40	40.77
2004	45.61	56.50	37.61	45.66	55.24	38.65	56.34	79.61	40.83
2005	46.79	56.21	39.89	46.90	55.37	40.72	58.08	75.00	46.66
2006	46.44	55.86	39.42	46.20	54.20	40.29	60.59	81.76	45.90
2007	46.37	55.33	39.68	46.48	53.96	40.92	58.73	79.68	44.67
2008	45.64	54.65	39.05	45.63	52.94	40.40	59.42	81.34	44.45
2009	44.94	52.96	39.05	45.20	52.00	40.20	56.34	75.21	43.74
2010	43.72	51.80	37.64	44.20	51.45	38.69	50.88	64.34	41.99
2011	42.90	49.99	37.59	43.12	49.14	38.60	52.76	69.99	41.45
2012	41.75	48.46	36.73	41.57	47.15	37.46	54.26	69.33	43.80
2013	40.92	46.51	36.74	41.00	45.34	37.78	49.57	63.89	39.99
2014	40.21	45.24	36.48	40.81	44.80	37.88	46.40	58.13	38.84
2015	38.71	44.02	34.66	38.84	43.13	35.58	46.76	59.42	38.34

Note: Non-Small Cell Cancer of the Lung and Bronchus includes histologies 8003-8004, 8012-8015, 8021-8022, 8030-8035, 8046, 8050-8052, 8070-8076, 8078, 8082-8084, 8090, 8094, 8120, 8123, 8140-8141, 8143-8145, 8147, 8190, 8200-8201, 8211, 8240-8241, 8243-8246, 8249-8255, 8260, 8290, 8310, 8320, 8323, 8333, 8401, 8430, 8440, 8470-8471, 8480-8481, 8490, 8503, 8507, 8525, 8550, 8560, 8562, 8570-8572, 8574-8576.

Individual rates for diagnosis years 1975-1979 available in web browser version of [Cancer Statistics Review](#).

^a SEER 9 areas (San Francisco, Connecticut, Detroit, Hawaii, Iowa, New Mexico, Seattle, Utah, and Atlanta).

Rates are per 100,000 and are age-adjusted to the 2000 US Std Population (19 age groups - Census P25-1130).

- Statistic not shown. Rate based on less than 16 cases for the time interval.

Table 15.9
Cancer of the Lung and Bronchus (Invasive)
Age-adjusted U.S. Death^a Rates by Year, Race and Sex

Year of Death:	All Races			Whites			Blacks		
	Total	Males	Females	Total	Males	Females	Total	Males	Females
1975-2015	51.81	74.61	35.18	51.91	73.84	35.86	58.89	95.03	34.29
1975-1979	45.41	80.14	20.10	44.85	78.97	20.21	53.41	98.19	19.78
1980	49.41	84.71	24.13	48.75	83.27	24.22	59.16	106.67	24.57
1981	49.99	85.16	24.95	49.28	83.52	25.10	60.57	109.71	25.10
1982	51.43	86.79	26.47	50.78	85.18	26.72	62.27	112.55	26.30
1983	52.40	87.04	28.10	51.70	85.40	28.28	63.68	112.76	28.73
1984	53.36	88.22	28.94	52.64	86.24	29.27	65.07	117.98	27.98
1985	54.32	88.54	30.41	53.68	86.69	30.81	65.76	117.50	29.64
1986	55.04	88.95	31.41	54.36	87.03	31.76	66.95	119.18	31.00
1987	56.24	90.05	32.72	55.56	88.09	33.04	68.65	121.77	32.48
1988	56.97	89.87	34.14	56.35	87.86	34.57	69.18	122.15	33.54
1989	57.90	89.77	35.77	57.21	87.57	36.27	71.04	124.72	34.87
1990	58.85	90.56	36.85	58.18	88.40	37.31	72.06	125.17	36.48
1991	58.99	89.88	37.61	58.38	87.76	38.12	71.64	123.58	37.16
1992	58.90	88.01	38.70	58.34	85.98	39.21	71.35	121.06	38.55
1993	59.13	87.60	39.28	58.66	85.52	39.97	71.12	121.98	37.72
1994	58.54	85.69	39.62	58.15	83.78	40.30	70.15	118.63	38.61
1995	58.38	84.37	40.26	58.08	82.62	40.97	69.28	116.08	38.84
1996	57.91	82.82	40.41	57.69	81.15	41.22	68.30	113.18	39.08
1997	57.51	81.33	40.82	57.31	79.83	41.52	67.89	110.21	40.53
1998	57.08	79.89	40.98	56.93	78.47	41.69	66.86	107.40	40.67
1999	55.42	76.97	40.15	55.31	75.67	40.86	65.00	103.61	40.00
2000	55.85	76.48	41.12	55.99	75.41	42.08	63.77	100.87	39.64
2001	55.32	75.32	41.01	55.55	74.34	42.05	62.54	99.32	38.80
2002	55.00	73.67	41.60	55.31	72.89	42.64	62.05	95.59	40.21
2003	54.19	72.03	41.29	54.52	71.32	42.30	60.92	92.96	40.25
2004	53.37	70.43	40.96	53.71	69.74	41.99	59.79	90.41	39.95
2005	52.85	69.49	40.71	53.32	69.09	41.70	58.52	86.96	40.12
2006	51.73	67.39	40.26	52.27	67.05	41.36	56.73	83.89	39.06
2007	50.71	65.17	40.10	51.28	64.76	41.30	55.38	82.19	38.13
2008	49.59	63.73	39.13	50.28	63.51	40.40	53.13	78.20	36.88
2009	48.41	61.54	38.63	49.18	61.41	39.97	51.56	75.49	35.90
2010	47.42	60.05	37.94	48.11	59.92	39.17	51.15	73.52	36.27
2011	46.00	57.87	37.01	46.72	57.84	38.20	49.31	70.02	35.44
2012	44.94	56.21	36.42	45.65	56.12	37.64	48.34	68.87	34.74
2013	43.44	53.95	35.46	44.13	53.91	36.64	46.97	66.01	34.13
2014	42.20	51.95	34.73	43.00	52.04	35.99	44.73	62.51	32.80
2015	40.62	49.76	33.56	41.49	49.89	34.92	42.23	59.06	30.77

^a Individual rates for years of death 1975-1979 available in web browser version of [Cancer Statistics Review](#).
US Mortality Files, National Center for Health Statistics, Centers for Disease Control and Prevention.
Rates are per 100,000 and are age-adjusted to the 2000 US Std Population (19 age groups - Census P25-1130).
- Statistic not shown. Rate based on less than 16 cases for the time interval.

Table 15.10
Cancer of the Lung and Bronchus (Invasive)SEER Incidence^a and U.S. Death^b Rates, Age-Adjusted and Age-Specific Rates, by Race and Sex

	All Races			Whites			Blacks		
	Total	Males	Females	Total	Males	Females	Total	Males	Females
<u>SEER Incidence</u>									
<u>Age at Diagnosis</u>									
Age-Adjusted Rates, 2011-2015									
All ages	54.6	63.8	47.8	56.1	63.9	50.2	61.4	81.2	47.9
Under 65	16.1	17.4	14.9	16.1	16.9	15.3	22.0	26.7	18.1
65 and over	320.9	384.0	275.1	332.8	388.8	291.9	333.6	458.0	254.1
All ages (WHO world std) ^c	38.3	44.0	33.7	39.2	44.0	35.4	44.5	58.0	34.9
Age-Specific Rates, 2011-2015									
<1	-	-	-	-	-	-	-	-	-
1-4	0.1	-	-	-	-	-	-	-	-
5-9	-	-	-	-	-	-	-	-	-
10-14	0.1	-	-	-	-	-	-	-	-
15-19	0.1	-	0.1	0.1	-	0.2	-	-	-
20-24	0.3	0.3	0.3	0.4	0.3	0.4	-	-	-
25-29	0.6	0.5	0.6	0.6	0.5	0.6	0.5	-	-
30-34	1.1	1.1	1.2	1.1	0.9	1.2	1.6	2.0	1.2
35-39	2.7	2.7	2.6	2.7	2.7	2.8	2.6	3.1	2.2
40-44	6.5	6.0	6.9	6.4	5.7	7.0	6.9	7.6	6.3
45-49	17.9	17.4	18.4	17.8	17.1	18.5	22.8	22.6	23.1
50-54	43.7	44.5	42.9	43.6	43.3	43.9	61.9	68.4	56.1
55-59	82.0	90.1	74.3	81.7	87.6	76.1	117.1	142.3	95.2
60-64	133.0	153.6	114.1	133.6	149.1	119.0	182.4	243.3	132.7
65-69	223.1	254.8	194.9	229.6	255.0	206.4	264.6	344.4	202.6
70-74	321.5	366.6	283.4	336.1	372.8	304.5	343.5	454.1	263.2
75-79	392.8	462.3	338.6	409.8	470.2	361.5	400.9	547.8	304.1
80-84	409.4	505.8	342.5	424.0	513.2	360.7	384.6	550.7	291.1
85+	309.1	428.4	246.9	315.5	432.0	254.5	289.6	453.8	220.0
<u>U.S. Mortality</u>									
<u>Age at Death</u>									
Age-Adjusted Rates, 2011-2015									
All ages	43.4	53.8	35.4	44.1	53.9	36.6	46.2	65.1	33.5
Under 65	12.0	13.9	10.1	12.0	13.7	10.4	15.0	19.6	11.2
65 and over	260.4	329.6	210.0	266.2	331.6	217.9	261.8	379.5	188.1
All ages (WHO world std) ^c	29.7	36.4	24.4	30.2	36.3	25.2	32.6	45.4	23.6
Age-Specific Rates, 2011-2015									
<1	-	-	-	-	-	-	-	-	-
1-4	-	-	-	-	-	-	-	-	-
5-9	-	-	-	-	-	-	-	-	-
10-14	0.0	-	-	-	-	-	-	-	-
15-19	0.0	0.0	-	0.0	-	-	-	-	-
20-24	0.1	0.1	0.1	0.1	0.1	0.1	0.1	-	-
25-29	0.2	0.2	0.1	0.2	0.2	0.1	0.2	0.2	-
30-34	0.5	0.5	0.4	0.4	0.4	0.4	0.8	1.0	0.5
35-39	1.3	1.4	1.2	1.2	1.3	1.1	1.6	2.1	1.2
40-44	4.3	4.2	4.3	4.4	4.2	4.5	4.5	4.9	4.2
45-49	13.2	13.7	12.6	13.4	13.6	13.1	15.0	17.5	12.8
50-54	33.3	36.9	29.9	33.3	36.0	30.6	43.0	52.8	34.5
55-59	62.9	74.6	51.9	62.8	72.9	53.0	81.4	106.8	59.6
60-64	99.7	122.4	78.9	100.2	120.2	81.5	124.0	173.2	84.0
65-69	162.7	197.0	132.0	165.6	196.0	137.7	183.8	259.1	125.5
70-74	243.3	296.0	198.3	249.3	297.9	207.2	256.6	363.2	180.0
75-79	309.2	381.2	252.4	317.6	384.9	263.3	303.3	430.5	220.7
80-84	353.1	455.7	281.7	360.9	459.7	290.7	333.4	495.6	244.0
85+	319.6	456.1	249.8	324.8	460.3	254.6	290.0	456.3	221.8

^a SEER 18 areas. Rates are per 100,000 and are age-adjusted to the 2000 US Std Population (19 age groups - Census P25-1130), unless noted.^b US Mortality Files, National Center for Health Statistics, Centers for Disease Control and Prevention.^c Rates are per 100,000 and are age-adjusted to the 2000 US Std Population (19 age groups - Census P25-1130), unless noted.^c Rates are per 100,000 and are age-adjusted to the world (WHO 2000-2025) standard million.

- Statistic not shown. Rate based on less than 16 cases for the time interval.

Table 15.11
Small Cell Cancer of the Lung and Bronchus^a(Invasive) and Non-Small Cell Cancer of the Lung and Bronchus^b(Invasive)

SEER Incidence^c Rates, Age-Adjusted and Age-Specific Rates, by Race and Sex

	All Races			Whites			Blacks		
	Total	Males	Females	Total	Males	Females	Total	Males	Females
<u>Small Cell Cancer of the Lung and Bronchus^a</u>									
<u>Age at Diagnosis</u>									
Age-Adjusted Rates, 2011-2015									
All ages	6.2	6.8	5.8	6.8	7.2	6.6	5.6	6.8	4.8
Under 65	2.2	2.2	2.2	2.5	2.4	2.5	2.2	2.4	2.0
65 and over	34.1	38.5	30.9	37.0	40.4	34.6	29.6	37.2	24.7
Age-Specific Rates, 2011-2015									
<1	-	-	-	-	-	-	-	-	-
1-4	-	-	-	-	-	-	-	-	-
5-9	-	-	-	-	-	-	-	-	-
10-14	-	-	-	-	-	-	-	-	-
15-19	-	-	-	-	-	-	-	-	-
20-24	-	-	-	-	-	-	-	-	-
25-29	-	-	-	-	-	-	-	-	-
30-34	0.1	-	-	-	-	-	-	-	-
35-39	0.2	0.2	0.1	0.2	0.2	0.2	-	-	-
40-44	0.6	0.6	0.6	0.7	0.6	0.7	0.5	-	-
45-49	2.2	2.1	2.3	2.6	2.4	2.7	1.9	1.9	1.9
50-54	6.1	5.8	6.5	6.9	6.3	7.5	5.7	6.6	4.9
55-59	12.1	12.3	11.9	13.3	13.2	13.4	12.3	12.9	11.7
60-64	19.0	19.8	18.3	20.8	21.0	20.7	19.0	22.0	16.5
65-69	30.6	33.3	28.2	33.6	35.2	32.1	26.8	34.0	21.2
70-74	38.6	41.5	36.1	42.5	44.4	40.8	31.7	38.7	26.6
75-79	41.7	46.2	38.3	45.1	48.2	42.6	39.3	48.9	33.0
80-84	35.8	42.4	31.2	38.2	44.0	34.1	28.5	32.8	26.1
85+	17.3	25.9	12.8	18.0	26.4	13.6	16.2	25.7	12.2
<u>Non-Small Cell Cancer Lung and Bronchus^b</u>									
<u>Age at Diagnosis</u>									
Age-Adjusted Rates, 2011-2015									
All ages	41.2	48.2	36.0	41.9	47.8	37.3	48.1	63.5	37.5
Under 65	12.8	13.8	11.8	12.5	13.2	11.9	18.2	21.9	15.1
65 and over	238.1	286.0	202.9	244.8	287.5	213.1	254.4	350.5	192.3
Age-Specific Rates, 2011-2015									
<1	-	-	-	-	-	-	-	-	-
1-4	-	-	-	-	-	-	-	-	-
5-9	-	-	-	-	-	-	-	-	-
10-14	-	-	-	-	-	-	-	-	-
15-19	0.1	-	0.1	0.1	-	-	-	-	-
20-24	0.3	0.2	0.3	0.3	0.3	0.3	-	-	-
25-29	0.5	0.4	0.6	0.5	0.4	0.5	0.4	-	-
30-34	0.9	0.8	1.0	0.9	0.7	1.0	1.2	1.5	1.0
35-39	2.3	2.4	2.3	2.4	2.4	2.4	2.3	2.6	2.0
40-44	5.4	5.0	5.9	5.3	4.7	5.9	5.8	6.4	5.1
45-49	14.7	14.2	15.2	14.2	13.6	14.9	19.7	19.6	19.8
50-54	34.9	35.4	34.3	34.1	33.9	34.2	51.8	56.1	47.9
55-59	64.4	70.8	58.3	62.8	67.6	58.1	97.4	117.8	79.6
60-64	103.6	119.8	88.8	102.3	114.4	90.8	147.9	196.6	108.2
65-69	173.8	198.3	152.0	176.4	195.9	158.6	216.0	281.3	165.3
70-74	250.6	286.0	220.7	259.5	288.5	234.6	274.7	361.0	212.1
75-79	301.7	359.0	257.0	311.9	361.9	271.9	313.9	437.7	232.2
80-84	296.0	370.0	244.9	304.6	374.4	255.1	280.1	402.0	211.5
85+	177.3	256.4	136.1	179.8	258.0	138.9	164.4	270.6	119.4

^a Small Cell Cancer of the Lung and Bronchus includes histologies 8002, 8041-8045.
^b Non-Small Cell Cancer of the Lung and Bronchus includes histologies 8003-8004, 8012-8015, 8021-8022, 8030-8035, 8046, 8050-8052, 8070-8076, 8078, 8082-8084, 8090, 8094, 8120, 8123, 8140-8141, 8143-8145, 8147, 8190, 8200-8201, 8211, 8240-8241, 8243-8246, 8249-8255, 8260, 8290, 8310, 8320, 8323, 8333, 8401, 8430, 8440, 8470-8471, 8480-8481, 8490, 8503, 8507, 8525, 8550, 8560, 8562, 8570-8572, 8574-8576.
^c SEER 18 areas. Rates are per 100,000 and are age-adjusted to the 2000 US Std Population (19 age groups - Census P25-1130), unless noted.
- Statistic not shown. Rate based on less than 16 cases for the time interval.

Table 15.12
Cancer of the Lung and Bronchus (Invasive)

5-Year Relative and Period Survival (Percent) by Race, Sex, Diagnosis Year, Stage and Age

	All Races			Whites			Blacks		
	Total	Males	Females	Total	Males	Females	Total	Males	Females
5-Year Relative Survival (Percent)									
Year of Diagnosis:									
1960-1963 ^a	-	-	-	8	7	11	5	5	6
1970-1973 ^a	-	-	-	10	9	14	7	6	10
1975-1977 ^b	12.2	11.1	15.3	12.3	11.1	15.4	11.2	10.5	13.8
1978-1980 ^b	12.8	11.3	16.3	12.9	11.5	16.2	11.7	9.7	17.8
1981-1983 ^b	13.1	11.5	16.4	13.3	11.7	16.6	11.4	10.2	14.9
1984-1986 ^b	12.8	11.2	16.0	13.0	11.2	16.3	11.1	10.3	12.8
1987-1989 ^b	13.0	11.9	15.0	13.3	12.0	15.3	10.9	10.8	11.1
1990-1992 ^b	13.6	12.1	15.9	14.0	12.5	16.2	10.5	9.3	12.7
1993-1995 ^b	14.3	12.5	16.9	14.5	12.6	17.1	12.8	11.2	15.7
1996-1998 ^b	14.6	12.9	16.8	14.8	13.1	17.0	12.3	10.7	15.0
1999-2001 ^b	15.3	13.1	17.9	15.5	13.3	18.0	12.7	10.8	15.4
2002-2004 ^b	16.1	14.2	18.4	16.5	14.4	18.9	13.2	12.8	13.9
2005-2007 ^b	17.8	15.2	20.6	18.3	15.7	21.1	14.0	12.2	16.1
2008-2014 ^b	19.9 ^f	16.7 ^f	23.3 ^f	20.0 ^f	16.9 ^f	23.2 ^f	18.3 ^f	15.0 ^f	21.9 ^f
5-Year Period Survival (Percent) ^{cd}									
2014	19.0	15.7	22.7	19.1	15.8	22.7	16.4	13.3	20.3
Stage Distribution (%) 2008-2014 ^{ce}									
All Stages									
Number of cases	264,275	138,788	125,487	214,482	111,164	103,318	30,645	16,916	13,729
Percent	100%	100%	100%	100%	100%	100%	100%	100%	100%
Localized	16	14	18	17	15	19	13	12	15
Regional	22	22	22	22	22	22	22	21	23
Distant	57	59	55	57	58	54	61	63	58
Unstaged/Unknown	5	4	5	5	5	5	4	4	4
5-Year Relative Survival (Percent), 2008-2014 ^c									
Age at Diagnosis:									
Ages <45	33.2	28.0	38.1	34.6	29.0	39.8	27.3	24.0	31.1
Ages 45-54	21.3	16.9	26.1	21.7	17.2	26.6	18.5	14.2	23.4
Ages 55-64	20.2	16.8	24.7	20.3	16.9	24.5	17.6	14.5	22.3
Ages 65-74	20.0	16.6	24.0	20.3	16.9	24.2	16.0	13.1	19.6
Ages 75+	14.1	11.8	16.2	14.3	12.0	16.3	11.3	8.1	14.0
Ages <65	21.2	17.3	25.9	21.4	17.5	26.0	18.3	14.9	23.1
Ages 65+	17.1	14.4	19.9	17.3	14.6	20.1	14.0	11.3	17.0
Stage ^e :									
All Stages	18.6	15.5	22.0	18.7	15.7	22.0	16.2	13.2	19.8
Localized	56.3	50.2	61.5	56.3	50.5	61.3	52.1	44.6	59.1
Regional	29.7	26.2	33.6	29.6	26.2	33.3	27.2	23.7	31.1
Distant	4.7	3.9	5.7	4.5	3.7	5.5	4.6	3.9	5.6
Unstaged/Unknown	7.8	7.2	8.4	7.0	6.4	7.6	10.2	8.3	12.7

^a Based on End Results data from a series of hospital registries and one population-based registry.^b SEER 9 areas (San Francisco, Connecticut, Detroit, Hawaii, Iowa, New Mexico, Seattle, Utah, Atlanta).^c Based on follow-up of patients into 2015. [Expected survival rates](#) are derived from the U.S. Annual Life Tables.^c SEER 18 areas (San Francisco, Connecticut, Detroit, Hawaii, Iowa, New Mexico, Seattle, Utah, Atlanta, San Jose-Monterey, Los Angeles, Alaska Native Registry, Rural Georgia, California excluding SF/SJM/LA, Kentucky, Louisiana, New Jersey and Georgia excluding ATL/RG). Expected survival rates are derived from life tables by socio-economic status, geography and race developed by the SEER program.^d Based on follow-up of patients into 2015.^d Period survival provides a 2014 estimate of survival by piecing together the most recent conditional survival estimates from several cohorts. It is computed here using three year calendar blocks (2010-2012: 0-1 year survival), (2009-2011: 1-2 year survival), (2008-2010: 2-3 year survival), (2007-2009: 3-4 year survival), (2006-2008: 4-5 years survival).^e Stage at diagnosis is classified using SEER Summary Stage 2000. Stage distribution percentages may not sum to 100 due to rounding.^f The difference between 1975-1977 and 2008-2014 is statistically significant (p<.05).^g The standard error is between 5 and 10 percentage points.^h The standard error is greater than 10 percentage points.⁻ Statistic could not be calculated due to fewer than 25 cases during the time period.

Table 15.13
Small Cell Cancer of the Lung and Bronchus (Invasive)

5-Year Relative and Period Survival (Percent) by Race, Sex, Diagnosis Year, Stage and Age

	All Races			Whites			Blacks		
	Total	Males	Females	Total	Males	Females	Total	Males	Females
5-Year Relative Survival (Percent)									
Year of Diagnosis:									
1975-1977 ^a	3.6	3.1	4.8	3.7	3.1	4.9	3.7	3.8	3.6
1978-1980 ^a	4.2	3.2	6.5	4.3	3.3	6.4	3.1	2.4	5.0
1981-1983 ^a	4.5	3.5	6.2	4.6	3.6	6.1	5.3	4.1	8.2
1984-1986 ^a	4.5	3.5	6.2	4.7	3.6	6.4	3.5	2.2	5.6
1987-1989 ^a	5.1	3.9	6.6	5.1	3.9	6.8	4.0	3.3	5.1
1990-1992 ^a	5.4	4.5	6.4	5.4	4.5	6.5	4.2	3.9	4.4
1993-1995 ^a	6.4	5.1	7.9	6.3	5.0	7.6	6.7	4.0	10.4
1996-1998 ^a	5.8	5.2	6.5	6.0	5.4	6.6	3.6	2.6	4.5
1999-2001 ^a	5.7	4.8	6.7	5.6	4.4	6.9	5.2	6.0	4.2
2002-2004 ^a	6.5	4.7	8.2	6.5	4.4	8.4	5.3	5.3	5.1
2005-2007 ^a	6.8	5.0	8.6	6.8	5.0	8.5	6.5	3.5	9.5
2008-2014 ^a	6.7 ^e	5.5 ^e	7.9 ^e	6.6 ^e	5.3 ^e	7.9 ^e	6.6 ^e	5.9 ^e	7.0
5-Year Period Survival (Percent) ^{bc}									
2014	6.2	4.7	7.7	6.2	4.6	7.6	7.0	5.3	8.9
Stage Distribution (%) 2008-2014 ^{bd}									
All Stages									
Number of cases	34,106	17,114	16,992	29,507	14,571	14,936	3,105	1,590	1,515
Percent	100%	100%	100%	100%	100%	100%	100%	100%	100%
Localized	4	4	4	4	4	4	4	4	3
Regional	19	17	21	19	17	21	20	18	22
Distant	75	77	73	75	77	73	75	76	73
Unstaged/Unknown	2	2	2	2	2	2	2	2	1
5-Year Relative Survival (Percent), 2008-2014 ^b									
Age at Diagnosis:									
Ages <45	13.4	12.0	15.1	13.6	12.2	15.3	9.3	-	-
Ages 45-54	8.6	6.4	10.8	8.4	5.8	10.9	10.9	10.3	11.7
Ages 55-64	7.9	6.0	10.0	7.8	5.9	9.8	7.8	4.6	11.0
Ages 65-74	6.1	4.8	7.4	6.1	4.6	7.6	5.5	5.4	5.5
Ages 75+	3.3	2.7	3.8	3.4	2.7	3.9	3.1	2.6	3.4
Ages <65	8.3	6.2	10.4	8.1	6.0	10.3	8.7	6.5	11.2
Ages 65+	4.9	4.0	5.9	5.0	3.9	6.1	4.6	4.5	4.7
Stage ^d :									
All Stages	6.3	4.9	7.7	6.3	4.8	7.8	6.7	5.5	7.8
Localized	28.5	24.5	32.2	28.2	23.6	32.3	34.5 ^f	33.5 ^f	32.8 ^f
Regional	14.9	12.3	17.0	15.0	12.2	17.1	15.1	11.7	18.3
Distant	2.9	2.2	3.6	2.9	2.2	3.5	3.3	2.7	3.9
Unstaged/Unknown	8.8	6.8	10.8	8.4	5.1	11.5	4.7	10.6 ^f	-

Note: Small Cell Cancer of the Lung and Bronchus includes histologies 8002, 8041-8045.

^a SEER 9 areas (San Francisco, Connecticut, Detroit, Hawaii, Iowa, New Mexico, Seattle, Utah, Atlanta).

Based on follow-up of patients into 2015. [Expected survival rates](#) are derived from the U.S. Annual Life Tables.

^b SEER 18 areas (San Francisco, Connecticut, Detroit, Hawaii, Iowa, New Mexico, Seattle, Utah, Atlanta, San Jose-Monterey, Los Angeles, Alaska Native Registry, Rural Georgia, California excluding SF/SJM/LA, Kentucky, Louisiana, New Jersey and Georgia excluding ATL/RG). Expected survival rates are derived from life tables by socio-economic status, geography and race developed by the SEER program.

Based on follow-up of patients into 2015.

^c Period survival provides a 2014 estimate of survival by piecing together the most recent conditional survival estimates from several cohorts. It is computed here using three year calendar blocks (2010-2012: 0-1 year survival), (2009-2011: 1-2 year survival), (2008-2010: 2-3 year survival), (2007-2009: 3-4 year survival), (2006-2008: 4-5 years survival).

^d Stage at diagnosis is classified using SEER Summary Stage 2000. Stage distribution percentages may not sum to 100 due to rounding.

^e The difference between 1975-1977 and 2008-2014 is statistically significant ($p < .05$).

^f The standard error is between 5 and 10 percentage points.

^g The standard error is greater than 10 percentage points.

- Statistic could not be calculated due to fewer than 25 cases during the time period.

Table 15.14
Non-Small Cell Cancer of the Lung and Bronchus (Invasive)

5-Year Relative and Period Survival (Percent) by Race, Sex, Diagnosis Year, Stage and Age

	All Races			Whites			Blacks		
	Total	Males	Females	Total	Males	Females	Total	Males	Females
5-Year Relative Survival (Percent)									
Year of Diagnosis:									
1975-1977 ^a	16.4	14.8	21.0	16.7	15.0	21.4	13.4	12.4	17.7
1978-1980 ^a	16.7	14.8	21.4	17.0	15.2	21.5	14.2	11.6	22.8
1981-1983 ^a	17.1	15.0	21.8	17.5	15.4	22.1	13.9	12.2	19.2
1984-1986 ^a	16.6	14.4	21.0	17.0	14.7	21.5	13.1	11.9	16.4
1987-1989 ^a	16.9	15.2	19.8	17.3	15.5	20.5	13.2	12.9	13.9
1990-1992 ^a	17.7	15.5	21.1	18.3	16.2	21.7	12.8	11.1	16.2
1993-1995 ^a	18.7	16.1	22.5	19.3	16.5	23.2	15.1	13.3	18.5
1996-1998 ^a	19.4	16.7	22.9	19.9	17.1	23.5	15.3	12.8	19.4
1999-2001 ^a	20.0	16.8	24.0	20.7	17.5	24.6	14.8	12.0	18.9
2002-2004 ^a	19.6	17.0	22.8	20.4	17.6	23.7	14.9	13.9	16.4
2005-2007 ^a	21.5	18.3	25.2	22.5	19.1	26.3	15.7	13.6	18.1
2008-2014 ^a	24.2 ^e	20.2 ^e	28.6 ^e	24.7 ^e	20.7 ^e	29.0 ^e	21.0 ^e	16.9 ^e	25.6 ^e
5-Year Period Survival (Percent) ^{bc}									
2014	23.3	19.0	28.1	23.7	19.4	28.5	18.8	15.2	23.3
Stage Distribution (%) 2008-2014 ^{bd}									
All Stages									
Number of cases	198,878	105,730	93,148	158,856	83,531	75,325	24,312	13,524	10,788
Percent	100%	100%	100%	100%	100%	100%	100%	100%	100%
Localized	19	17	22	20	17	23	15	13	17
Regional	24	24	23	24	25	24	24	23	25
Distant	55	57	53	54	56	51	59	62	56
Unstaged/Unknown	2	2	2	2	2	2	2	2	2
5-Year Relative Survival (Percent), 2008-2014 ^b									
Age at Diagnosis:									
Ages <45	35.0	29.3	40.2	37.0	30.5	42.7	28.2	25.2	31.7
Ages 45-54	24.0	18.9	29.5	24.9	19.7	30.5	19.6	14.6	25.1
Ages 55-64	23.6	19.5	29.0	24.1	19.9	29.4	19.3	16.0	24.4
Ages 65-74	24.1	20.0	29.0	24.8	20.6	29.5	18.5	15.0	22.9
Ages 75+	18.8	15.5	22.1	19.2	15.9	22.5	14.7	10.6	18.5
Ages <65	24.3	19.8	29.9	25.0	20.4	30.5	19.8	16.1	25.0
Ages 65+	21.7	18.0	25.6	22.2	18.5	26.0	17.0	13.5	21.0
Stage ^d :									
All Stages	22.7	18.7	27.1	23.2	19.2	27.6	18.5	14.9	23.0
Localized	60.1	53.7	65.6	60.3	54.2	65.5	55.2	47.0	62.8
Regional	33.4	29.0	38.4	33.4	29.1	38.3	29.7	25.9	34.1
Distant	5.5	4.5	6.7	5.3	4.3	6.5	5.0	4.1	6.2
Unstaged/Unknown	13.8	12.9	14.9	13.1	11.9	14.3	12.0	10.1	14.3

Note: Non-Small Cell Cancer of the Lung and Bronchus includes histologies 8003-8004, 8012-8015, 8021-8022, 8030-8035, 8046, 8050-8052, 8070-8076, 8078, 8082-8084, 8090, 8094, 8120, 8123, 8140-8141, 8143-8145, 8147, 8190, 8200-8201, 8211, 8240-8241, 8243-8246, 8249-8255, 8260, 8290, 8310, 8320, 8323, 8333, 8401, 8430, 8440, 8470-8471, 8480-8481, 8490, 8503, 8507, 8525, 8550, 8560, 8562, 8570-8572, 8574-8576.

^a SEER 9 areas (San Francisco, Connecticut, Detroit, Hawaii, Iowa, New Mexico, Seattle, Utah, Atlanta).

Based on follow-up of patients into 2015. [Expected survival rates](#) are derived from the U.S. Annual Life Tables.

^b SEER 18 areas (San Francisco, Connecticut, Detroit, Hawaii, Iowa, New Mexico, Seattle, Utah, Atlanta, San Jose-Monterey, Los Angeles, Alaska Native Registry, Rural Georgia, California excluding SF/SJM/LA, Kentucky, Louisiana, New Jersey and Georgia excluding ATL/RG). Expected survival rates are derived from life tables by socio-economic status, geography and race developed by the SEER program.

Based on follow-up of patients into 2015.

^c Period survival provides a 2014 estimate of survival by piecing together the most recent conditional survival estimates from several cohorts. It is computed here using three year calendar blocks (2010-2012: 0-1 year survival), (2009-2011: 1-2 year survival), (2008-2010: 2-3 year survival), (2007-2009: 3-4 year survival), (2006-2008: 4-5 years survival).

^d Stage at diagnosis is classified using SEER Summary Stage 2000. Stage distribution percentages may not sum to 100 due to rounding.

^e The difference between 1975-1977 and 2008-2014 is statistically significant ($p < .05$).

^f The standard error is between 5 and 10 percentage points.

^g The standard error is greater than 10 percentage points.

- Statistic could not be calculated due to fewer than 25 cases during the time period.

Table 15.15
Cancer of the Lung and Bronchus (Invasive)

SEER^a Relative Survival (Percent)
By Year of Diagnosis

All Races, Males and Females

Year of Diagnosis

	1975- 1979	1980- 1984	1985- 1989	1990- 1994	1995	1996	1997	1998	1999	2000	2001	2002	2003	2004	2005	2006	2007	2008	2009	2010	2011	2012	2013	2014
Survival Time																								
1-year	35.3	37.2	38.5	39.5	40.3	39.9	40.4	39.9	41.4	40.9	40.2	40.7	41.9	42.2	43.5	44.0	44.4	45.2	45.8	44.9	46.7	45.9	48.0	47.9
2-year	21.1	22.0	22.6	23.7	24.9	24.7	24.7	25.2	25.8	25.8	25.5	26.5	26.5	27.7	28.5	29.4	30.1	31.0	31.4	31.1	32.7	31.8	33.5	
3-year	16.3	16.9	17.1	18.3	19.1	19.3	19.3	19.8	19.8	20.2	19.8	20.7	20.7	22.3	22.6	23.5	23.9	24.8	25.3	24.9	26.4	25.5		
4-year	13.9	14.5	14.6	15.5	16.5	16.2	16.5	17.0	17.0	17.5	16.8	17.5	17.9	18.9	19.5	20.0	20.5	21.4	21.6	21.5	22.9			
5-year	12.5	12.9	13.0	13.8	14.5	14.6	14.7	14.6	15.1	15.7	15.0	15.5	16.0	16.8	17.4	17.6	18.3	18.8	19.6	19.3				
6-year	11.4	11.7	11.9	12.6	13.2	13.2	13.3	13.3	13.7	14.2	13.4	14.1	14.5	15.4	15.8	16.2	16.8	17.3	17.9					
7-year	10.7	10.8	10.9	11.6	12.3	12.1	12.2	12.2	12.7	12.9	12.3	12.9	13.3	14.2	14.6	15.1	15.3	15.9						
8-year	10.0	10.0	10.1	10.7	11.5	11.2	11.3	11.2	11.8	12.0	11.4	11.9	12.0	13.2	13.5	14.0	14.1							
9-year	9.4	9.2	9.4	9.9	10.7	10.3	10.4	10.5	11.0	11.2	10.6	11.1	11.1	12.5	12.6	12.7								
10-year	8.8	8.6	8.8	9.3	10.0	9.5	9.8	10.0	10.5	10.4	10.0	10.3	10.2	11.6										
11-year	8.3	8.1	8.2	8.6	9.4	8.8	9.1	9.4	9.7	9.7	9.4	9.5	9.7	10.7										
12-year	7.8	7.7	7.7	8.0	8.9	8.3	8.4	8.9	9.1	9.1	8.8	8.8	9.2											
13-year	7.4	7.2	7.2	7.5	8.2	7.9	8.0	8.1	8.5	8.6	8.1	8.3												
14-year	7.1	6.8	6.8	7.1	7.7	7.5	7.5	7.6	8.0	8.0	7.7													
15-year	6.6	6.4	6.4	6.7	7.3	7.0	7.1	7.1	7.6	7.7														
16-year	6.3	6.0	6.1	6.2	6.9	6.6	6.5	6.7	7.1															
17-year	6.0	5.6	5.7	5.9	6.4	6.3	6.1	6.3																
18-year	5.7	5.3	5.3	5.5	5.9	6.0	5.7																	
19-year	5.4	5.0	4.9	5.2	5.4	5.6																		
20-year	5.2	4.6	4.7	4.9	5.2																			
21-year	4.9	4.3	4.5	4.6																				
22-year	4.7	4.1	4.2																					
23-year	4.4	3.8	4.0																					
24-year	4.2	3.6	3.8																					
25-year	4.0	3.4	3.6																					
26-year	3.8	3.2	3.4																					
27-year	3.6	3.0																						
28-year	3.5	2.9																						
29-year	3.3	2.7																						
30-year	3.2	2.6																						

^a Based on the SEER 9 areas (San Francisco, Connecticut, Detroit, Hawaii, Iowa, New Mexico, Seattle, Utah, and Atlanta). [Expected survival rates](#) are derived from the U.S. Annual Life Tables.

Table 15.16
Cancer of the Lung and Bronchus (Invasive)

SEER^a Relative Survival (Percent)
By Year of Diagnosis

All Races, Males

Year of Diagnosis

	1975- 1979	1980- 1984	1985- 1989	1990- 1994	1995	1996	1997	1998	1999	2000	2001	2002	2003	2004	2005	2006	2007	2008	2009	2010	2011	2012	2013	2014
Survival Time																								
1-year	33.4	35.4	36.5	37.2	38.0	38.0	38.1	37.0	38.2	38.6	37.0	37.2	39.4	39.0	40.0	41.3	40.9	42.0	42.7	41.2	42.4	41.6	42.8	43.8
2-year	19.5	20.2	21.0	21.6	23.1	23.0	23.0	22.6	22.7	23.7	22.2	23.1	23.7	24.7	24.8	26.8	26.2	27.8	27.6	27.3	28.4	28.0	27.9	
3-year	14.8	15.3	15.6	16.4	17.3	17.7	17.7	17.4	16.7	18.2	17.2	17.9	18.1	19.5	19.5	20.8	20.8	22.0	21.9	21.5	22.3	22.0		
4-year	12.5	12.9	13.1	13.7	14.8	14.5	15.0	14.7	14.1	15.5	14.3	15.0	16.6	16.6	17.3	17.5	18.9	18.4	18.5	18.9				
5-year	11.1	11.4	11.6	12.1	13.2	13.0	13.3	12.4	12.5	14.1	12.7	13.6	14.0	14.9	14.9	15.1	15.7	16.7	16.5	16.5				
6-year	10.1	10.4	10.6	11.0	11.8	11.7	11.9	11.0	11.2	12.6	11.5	12.2	12.6	13.6	13.3	14.0	14.2	15.2	15.1					
7-year	9.4	9.5	9.7	10.0	11.2	10.6	10.8	10.1	10.3	11.3	10.4	11.2	11.6	12.3	12.2	12.8	12.7	14.1						
8-year	8.8	8.7	9.0	9.1	10.2	9.8	10.0	9.1	9.5	10.7	9.6	10.1	10.8	11.4	11.2	11.9	11.6							
9-year	8.2	7.9	8.4	8.4	9.6	9.0	9.2	8.5	8.7	9.9	8.9	9.3	9.8	10.8	10.5	10.7								
10-year	7.7	7.4	7.9	7.9	8.8	8.2	8.6	8.0	8.3	9.1	8.3	8.6	8.9	10.0	9.6									
11-year	7.2	7.0	7.3	7.2	8.3	7.4	7.9	7.5	7.7	8.4	7.7	8.0	8.4	9.3										
12-year	6.7	6.6	6.8	6.7	8.0	6.9	7.2	7.0	7.2	7.7	7.2	7.4	8.0											
13-year	6.3	6.2	6.3	6.2	7.2	6.6	6.8	6.3	6.8	7.2	6.5	6.9												
14-year	6.0	5.8	6.0	5.8	6.9	6.3	6.4	6.0	6.3	6.6	6.1													
15-year	5.6	5.4	5.6	5.5	6.4	5.7	6.1	5.6	5.9	6.4														
16-year	5.3	5.0	5.3	5.1	6.2	5.4	5.7	5.3	5.8															
17-year	5.1	4.6	4.8	4.8	5.8	5.2	5.3	5.0																
18-year	4.7	4.4	4.5	4.5	5.2	4.9	4.9																	
19-year	4.5	4.1	4.1	4.2	4.6	4.6																		
20-year	4.2	3.8	3.9	4.0	4.2																			
21-year	4.1	3.5	3.6	3.7																				
22-year	3.9	3.3	3.4																					
23-year	3.7	3.1	3.2																					
24-year	3.4	2.8	3.0																					
25-year	3.3	2.7	2.8																					
26-year	3.1	2.5	2.6																					
27-year	2.8	2.4																						
28-year	2.8	2.4																						
29-year	2.7	2.2																						
30-year	2.6	2.1																						

^a Based on the SEER 9 areas (San Francisco, Connecticut, Detroit, Hawaii, Iowa, New Mexico, Seattle, Utah, and Atlanta). [Expected survival rates](#) are derived from the U.S. Annual Life Tables.

Table 15.17
Cancer of the Lung and Bronchus (Invasive)

SEER^a Relative Survival (Percent)
By Year of Diagnosis

All Races, Females

Year of Diagnosis

	1975- 1979	1980- 1984	1985- 1989	1990- 1994	1995	1996	1997	1998	1999	2000	2001	2002	2003	2004	2005	2006	2007	2008	2009	2010	2011	2012	2013	2014
Survival Time																								
1-year	40.4	41.3	42.2	42.8	43.5	42.5	43.3	43.6	45.4	43.6	44.2	45.0	44.9	45.8	47.4	47.1	48.2	48.8	49.1	48.9	51.3	50.5	53.4	52.1
2-year	25.3	25.7	25.5	26.7	27.4	26.9	26.9	28.4	29.5	28.5	29.7	30.5	29.9	31.1	32.4	32.4	34.3	34.6	35.5	35.3	37.3	35.9	39.5	
3-year	20.2	20.5	19.7	21.1	21.6	21.4	21.2	22.9	23.6	22.8	23.0	24.0	23.8	25.5	26.1	26.6	27.3	27.8	28.9	28.6	30.7	29.3		
4-year	17.8	17.8	17.2	18.3	18.8	18.3	18.5	19.9	20.5	19.9	19.9	20.4	20.6	21.4	22.8	23.0	23.8	24.1	25.1	24.8	27.0			
5-year	16.1	16.0	15.4	16.4	16.4	16.6	16.4	17.4	18.3	17.7	17.7	17.9	18.3	19.0	20.2	20.4	21.2	21.2	22.9	22.3				
6-year	14.9	14.6	14.1	15.1	15.0	15.2	15.0	16.1	16.7	16.1	15.8	16.4	16.7	17.6	18.5	18.8	19.6	19.6	20.9					
7-year	14.0	13.6	12.9	13.9	13.9	14.1	14.0	14.9	15.6	15.0	14.6	15.0	15.3	16.3	17.2	17.6	18.1	17.9						
8-year	13.1	12.8	11.9	13.0	13.1	13.1	12.8	13.9	14.7	13.6	13.7	14.0	13.6	15.3	16.0	16.4	16.9							
9-year	12.4	11.9	11.2	12.1	12.3	11.9	11.9	13.1	13.8	12.8	12.7	13.1	12.6	14.3	14.8	14.9								
10-year	11.6	11.1	10.4	11.3	11.6	11.1	11.2	12.4	13.0	12.0	12.1	12.3	11.8	13.3	13.9									
11-year	11.1	10.6	9.8	10.6	11.0	10.7	10.6	11.8	12.1	11.4	11.3	11.3	11.2	12.3										
12-year	10.6	9.9	9.2	9.9	10.1	10.1	9.9	11.3	11.4	10.7	10.6	10.5	10.6											
13-year	10.2	9.3	8.8	9.4	9.4	9.6	9.3	10.4	10.7	10.2	10.1	9.9												
14-year	9.7	8.9	8.2	9.0	8.7	9.1	8.9	9.6	10.0	9.6	9.5													
15-year	9.2	8.5	7.8	8.4	8.4	8.7	8.3	9.1	9.5	9.1														
16-year	8.9	8.0	7.4	7.9	7.9	8.2	7.5	8.6	8.8															
17-year	8.4	7.7	7.0	7.4	7.3	7.8	7.2	7.9																
18-year	8.0	7.2	6.7	7.0	6.8	7.4	6.7																	
19-year	7.7	6.6	6.3	6.5	6.5	6.8																		
20-year	7.4	6.3	6.1	6.2	6.3																			
21-year	6.9	5.9	5.9	5.9																				
22-year	6.5	5.6	5.5																					
23-year	6.2	5.3	5.3																					
24-year	6.0	5.1	5.1																					
25-year	5.8	4.8	4.9																					
26-year	5.6	4.6	4.8																					
27-year	5.4	4.2																						
28-year	5.1	3.9																						
29-year	4.9	3.7																						
30-year	4.6	3.6																						

^a Based on the SEER 9 areas (San Francisco, Connecticut, Detroit, Hawaii, Iowa, New Mexico, Seattle, Utah, and Atlanta). [Expected survival rates](#) are derived from the U.S. Annual Life Tables.

Table 15.18
Cancer of the Lung and Bronchus (Invasive)

Risk of Being Diagnosed With Cancer in 10, 20 and 30 Years,
Lifetime Risk of Being Diagnosed with Cancer Given Alive and Cancer-Free at Current Age, and
Lifetime Risk of Dying from Cancer Given Alive at Current Age
Both Sexes, 2013-2015 By Race/Ethnicity

Race/ Ethnicity	Current Age	Risk of Being Diagnosed with Cancer				Risk of Dying from Cancer	Race/ Ethnicity	Current Age	Risk of Being Diagnosed with Cancer				Risk of Dying from Cancer
		+10 yrs	+20 yrs	+30 yrs	Ever				+10 yrs	+20 yrs	+30 yrs	Ever	
All Races	0	0.00	0.00	0.01	6.24	5.15	Asian/ Pacific Islander	0	0.00	0.00	0.01	5.45	4.17
	10	0.00	0.01	0.03	6.31	5.21		10	0.00	0.01	0.02	5.49	4.20
	20	0.00	0.02	0.14	6.33	5.23		20	0.01	0.02	0.12	5.49	4.21
	30	0.02	0.14	0.72	6.38	5.27		30	0.02	0.12	0.47	5.51	4.22
	40	0.12	0.70	2.16	6.44	5.34		40	0.10	0.46	1.41	5.52	4.24
	50	0.60	2.09	4.48	6.48	5.39		50	0.36	1.33	3.04	5.49	4.23
	60	1.58	4.13	5.89	6.24	5.24		60	1.00	2.76	4.51	5.28	4.13
	70	2.89	4.89	-	5.29	4.58		70	1.89	3.77	-	4.60	3.80
80	2.69	-	-	3.23	3.06	80	2.24	-	-	3.22	3.01		
White	0	0.00	0.00	0.01	6.38	5.26	American Indian/ Alaska Native ^a	0	0.00	0.00	0.00	4.15	3.89
	10	0.00	0.01	0.03	6.44	5.32		10	0.00	0.00	0.01	4.20	3.94
	20	0.00	0.02	0.14	6.46	5.33		20	0.00	0.01	0.06	4.22	3.96
	30	0.02	0.14	0.72	6.51	5.38		30	0.01	0.06	0.42	4.29	4.04
	40	0.12	0.70	2.18	6.57	5.44		40	0.05	0.42	1.43	4.39	4.15
	50	0.60	2.11	4.61	6.61	5.49		50	0.39	1.44	3.12	4.53	4.29
	60	1.61	4.26	6.05	6.38	5.34		60	1.13	2.94	4.25	4.45	4.34
	70	3.00	5.03	-	5.41	4.66		70	2.07	3.56	-	3.79	3.96
80	2.75	-	-	3.26	3.09	80	2.03	-	-	2.34	2.55		
Black	0	0.00	0.00	0.01	5.94	4.76	Hispanic ^b	0	0.00	0.00	0.00	3.87	2.87
	10	0.00	0.01	0.03	6.06	4.86		10	0.00	0.00	0.02	3.90	2.89
	20	0.00	0.03	0.17	6.09	4.88		20	0.00	0.02	0.07	3.91	2.90
	30	0.02	0.16	0.94	6.16	4.94		30	0.01	0.06	0.29	3.93	2.92
	40	0.14	0.93	2.61	6.26	5.02		40	0.05	0.28	0.98	3.96	2.94
	50	0.82	2.56	4.77	6.35	5.11		50	0.23	0.95	2.32	3.98	2.96
	60	1.91	4.34	5.75	6.06	4.95		60	0.75	2.18	3.45	3.91	2.94
	70	2.93	4.64	-	5.02	4.28		70	1.58	2.97	-	3.48	2.72
80	2.49	-	-	3.04	2.89	80	1.75	-	-	2.39	2.07		

Devcan 6.7.6, April 2018, National Cancer Institute (<https://surveillance.cancer.gov/devcan/>).

Source: Incidence data are from the SEER 18 areas (San Francisco, Connecticut, Detroit, Hawaii, Iowa, New Mexico, Seattle, Utah, Atlanta, San Jose-Monterey, Los Angeles, Alaska Native Registry, Rural Georgia, California excluding SF/SJM/LA, Kentucky, Louisiana, New Jersey, and Georgia excluding ATL/RG). Mortality data are from the NCHS public use data file for the total US.

^a Underlying incidence and mortality data for American Indian/Alaska Native are based on the CHSDA (Contract Health Service Delivery Area) counties.

^b Hispanic is not mutually exclusive from whites, blacks, Asian/Pacific Islanders, and American Indians/Alaska Natives. Underlying incidence data for Hispanics are based on NHIA and exclude cases from the Alaska Native Registry.

- Statistic could not be calculated.

A percent of 0.00 represents a value that is below 0.005.

Table 15.19
Cancer of the Lung and Bronchus (Invasive)

Risk of Being Diagnosed With Cancer in 10, 20 and 30 Years,
Lifetime Risk of Being Diagnosed with Cancer Given Alive and Cancer-Free at Current Age, and
Lifetime Risk of Dying from Cancer Given Alive at Current Age
Males, 2013-2015 By Race/Ethnicity

Race/ Ethnicity	Current Age	Risk of Being Diagnosed with Cancer				Risk of Dying from Cancer	Race/ Ethnicity	Current Age	Risk of Being Diagnosed with Cancer				Risk of Dying from Cancer
		+10 yrs	+20 yrs	+30 yrs	Ever				+10 yrs	+20 yrs	+30 yrs	Ever	
All Races	0	0.00	0.00	0.01	6.68	5.74	Asian/ Pacific Islander	0	0.00	0.00	0.00	6.59	5.12
	10	0.00	0.00	0.02	6.75	5.81		10	0.00	0.00	0.02	6.64	5.16
	20	0.00	0.02	0.14	6.78	5.84		20	0.00	0.02	0.13	6.66	5.18
	30	0.02	0.14	0.74	6.86	5.91		30	0.02	0.12	0.53	6.69	5.20
	40	0.12	0.74	2.35	6.95	6.01		40	0.11	0.52	1.73	6.72	5.23
	50	0.63	2.30	4.90	7.05	6.11		50	0.42	1.65	3.79	6.72	5.24
	60	1.79	4.60	6.53	6.91	6.03		60	1.28	3.51	5.69	6.55	5.16
	70	3.28	5.54	-	5.98	5.38		70	2.44	4.83	-	5.77	4.78
80	3.22	-	-	3.86	3.77	80	2.97	-	-	4.14	3.88		
White	0	0.00	0.00	0.01	6.67	5.78	American Indian/ Alaska Native ^a	0	0.00	0.00	0.00	4.80	4.18
	10	0.00	0.00	0.02	6.74	5.85		10	0.00	0.00	0.01	4.86	4.25
	20	0.00	0.02	0.14	6.77	5.87		20	0.00	0.01	0.06	4.89	4.28
	30	0.02	0.14	0.72	6.84	5.94		30	0.01	0.06	0.46	5.00	4.39
	40	0.12	0.72	2.31	6.94	6.04		40	0.05	0.47	1.62	5.16	4.54
	50	0.62	2.26	4.91	7.03	6.14		50	0.44	1.66	3.77	5.38	4.78
	60	1.77	4.62	6.55	6.90	6.06		60	1.33	3.65	5.20	5.41	4.97
	70	3.32	5.58	-	5.99	5.40		70	2.72	4.55	-	4.80	4.72
80	3.23	-	-	3.82	3.76	80	2.64	-	-	2.99	3.09		
Black	0	0.00	0.00	0.01	6.89	5.78	Hispanic ^b	0	0.00	0.00	0.00	4.36	3.61
	10	0.00	0.01	0.03	7.04	5.91		10	0.00	0.00	0.02	4.40	3.65
	20	0.00	0.03	0.17	7.09	5.95		20	0.00	0.02	0.06	4.42	3.66
	30	0.03	0.17	1.05	7.22	6.06		30	0.01	0.06	0.29	4.46	3.69
	40	0.15	1.05	3.13	7.38	6.21		40	0.05	0.28	1.05	4.50	3.73
	50	0.95	3.13	5.76	7.58	6.37		50	0.24	1.03	2.67	4.56	3.79
	60	2.44	5.39	7.04	7.42	6.29		60	0.83	2.58	4.08	4.57	3.82
	70	3.76	5.88	-	6.36	5.59		70	1.97	3.66	-	4.21	3.60
80	3.40	-	-	4.17	3.97	80	2.24	-	-	2.97	2.80		

Devcan 6.7.6, April 2018, National Cancer Institute (<https://surveillance.cancer.gov/devcan/>).

Source: Incidence data are from the SEER 18 areas (San Francisco, Connecticut, Detroit, Hawaii, Iowa, New Mexico, Seattle, Utah, Atlanta, San Jose-Monterey, Los Angeles, Alaska Native Registry, Rural Georgia, California excluding SF/SJM/LA, Kentucky, Louisiana, New Jersey, and Georgia excluding ATL/RG). Mortality data are from the NCHS public use data file for the total US.

^a Underlying incidence and mortality data for American Indian/Alaska Native are based on the CHSDA (Contract Health Service Delivery Area) counties.

^b Hispanic is not mutually exclusive from whites, blacks, Asian/Pacific Islanders, and American Indians/Alaska Natives. Underlying incidence data for Hispanics are based on NHIA and exclude cases from the Alaska Native Registry.

- Statistic could not be calculated.

A percent of 0.00 represents a value that is below 0.005.

Table 15.20
Cancer of the Lung and Bronchus (Invasive)

Risk of Being Diagnosed With Cancer in 10, 20 and 30 Years,
Lifetime Risk of Being Diagnosed with Cancer Given Alive and Cancer-Free at Current Age, and
Lifetime Risk of Dying from Cancer Given Alive at Current Age
Females, 2013-2015 By Race/Ethnicity

Race/ Ethnicity	Current Age	Risk of Being Diagnosed with Cancer				Risk of Dying from Cancer	Race/ Ethnicity	Current Age	Risk of Being Diagnosed with Cancer				Risk of Dying from Cancer
		+10 yrs	+20 yrs	+30 yrs	Ever				+10 yrs	+20 yrs	+30 yrs	Ever	
All Races	0	0.00	0.00	0.01	5.87	4.62	Asian/ Pacific Islander	0	0.00	0.00	0.01	4.52	3.42
	10	0.00	0.01	0.03	5.93	4.67		10	0.00	0.01	0.03	4.55	3.44
	20	0.00	0.03	0.15	5.94	4.68		20	0.01	0.03	0.12	4.55	3.44
	30	0.02	0.14	0.69	5.96	4.71		30	0.02	0.12	0.43	4.55	3.45
	40	0.12	0.68	1.97	5.99	4.74		40	0.10	0.41	1.15	4.55	3.45
	50	0.56	1.88	4.10	5.98	4.75		50	0.31	1.06	2.41	4.50	3.43
	60	1.39	3.71	5.33	5.68	4.56		60	0.76	2.14	3.57	4.28	3.33
	70	2.56	4.36	-	4.74	3.94		70	1.46	2.96	-	3.71	3.07
80	2.31	-	-	2.80	2.58	80	1.74	-	-	2.60	2.42		
White	0	0.00	0.00	0.01	6.14	4.80	American Indian/ Alaska Native ^a	0	0.00	0.00	0.00	3.57	3.64
	10	0.00	0.01	0.03	6.19	4.84		10	0.00	0.00	0.01	3.60	3.68
	20	0.00	0.03	0.15	6.20	4.85		20	0.00	0.01	0.06	3.61	3.70
	30	0.02	0.15	0.71	6.23	4.87		30	0.01	0.05	0.37	3.64	3.74
	40	0.13	0.69	2.06	6.26	4.91		40	0.05	0.37	1.25	3.70	3.82
	50	0.58	1.97	4.33	6.25	4.92		50	0.34	1.24	2.54	3.77	3.88
	60	1.46	3.93	5.61	5.94	4.72		60	0.96	2.33	3.44	3.63	3.83
	70	2.73	4.59	-	4.95	4.06		70	1.53	2.77	-	2.98	3.38
80	2.40	-	-	2.88	2.62	80	1.60	-	-	1.88	2.22		
Black	0	0.00	0.00	0.01	5.15	3.91	Hispanic ^b	0	0.00	0.00	0.01	3.48	2.27
	10	0.00	0.00	0.02	5.24	3.98		10	0.00	0.01	0.02	3.51	2.29
	20	0.00	0.02	0.16	5.25	3.99		20	0.00	0.02	0.07	3.51	2.29
	30	0.02	0.16	0.83	5.28	4.02		30	0.01	0.06	0.29	3.52	2.30
	40	0.14	0.83	2.15	5.34	4.06		40	0.05	0.28	0.92	3.52	2.31
	50	0.70	2.07	3.93	5.35	4.10		50	0.23	0.88	2.03	3.52	2.31
	60	1.47	3.47	4.71	5.00	3.91		60	0.67	1.86	2.94	3.39	2.26
	70	2.32	3.76	-	4.09	3.39		70	1.28	2.45	-	2.93	2.08
80	1.96	-	-	2.42	2.30	80	1.41	-	-	1.99	1.60		

Devcan 6.7.6, April 2018, National Cancer Institute (<https://surveillance.cancer.gov/devcan/>).

Source: Incidence data are from the SEER 18 areas (San Francisco, Connecticut, Detroit, Hawaii, Iowa, New Mexico, Seattle, Utah, Atlanta, San Jose-Monterey, Los Angeles, Alaska Native Registry, Rural Georgia, California excluding SF/SJM/LA, Kentucky, Louisiana, New Jersey, and Georgia excluding ATL/RG). Mortality data are from the NCHS public use data file for the total US.

^a Underlying incidence and mortality data for American Indian/Alaska Native are based on the CHSDA (Contract Health Service Delivery Area) counties.

^b Hispanic is not mutually exclusive from whites, blacks, Asian/Pacific Islanders, and American Indians/Alaska Natives. Underlying incidence data for Hispanics are based on NHIA and exclude cases from the Alaska Native Registry.

- Statistic could not be calculated.

A percent of 0.00 represents a value that is below 0.005.

Table 15.21
Lung and Bronchus (Invasive)

SEER Incidence and U.S. Mortality
Age-Adjusted Rates and Trends^a
By Race/Ethnicity and Sex

SEER Incidence	SEER 18 Areas ^b			SEER 13 Areas ^b			SEER 9 Areas ^b		
	Rate 2011-2015			Trend 2006-2015 ^c			Trend 2006-2015 ^d		
	Rate per 100,000 persons			AAPC (%)			AAPC (%)		
RACE/ETHNICITY	Total	Males	Females	Total	Males	Females	Total	Males	Females
All Races	54.6	63.8	47.8	-2.3*	-2.9*	-1.8*	-2.1*	-2.8*	-1.6*
White	56.1	63.9	50.2	-2.3*	-2.9*	-1.8*	-2.1*	-2.8*	-1.5*
White Hispanic ^e	28.6	35.2	23.9	-1.3*	-2.1*	-0.4*	-	-	-
White Non-Hispanic ^e	60.7	68.6	54.8	-2.2*	-2.7*	-1.7*	-	-	-
Black	61.4	81.2	47.9	-3.0*	-4.0*	-1.9*	-3.0*	-3.0*	-1.9*
Asian/Pacific Islander	35.6	45.9	28.0	-1.5*	-2.2*	0.1	-	-	-
Amer Ind/Alaska Nat ^f	37.3	45.4	31.2	-1.2*	-1.8*	-3.6*	-	-	-
Hispanic ^e	27.8	34.1	23.2	-1.3*	-2.1*	-0.4*	-	-	-
<u>U.S. Mortality^g</u>									
	Rate 2011-2015			Trend 2006-2015 ^h					
	Rate per 100,000 persons			AAPC (%)					
RACE/ETHNICITY	Total	Males	Females	Total	Males	Females			
All Races	43.4	53.8	35.4	-2.6*	-3.3*	-1.9*			
White	44.1	53.9	36.6	-2.4*	-3.2*	-1.8*			
White Hispanic ^e	19.9	27.9	14.0	-2.3*	-3.2*	-1.1*			
White Non-Hispanic ^e	46.5	56.3	39.0	-2.3*	-3.1*	-1.7*			
Black	46.2	65.1	33.5	-3.2*	-3.8*	-2.5*			
Asian/Pacific Islander	23.4	31.2	17.8	-1.6*	-2.4*	-0.5*			
Amer Ind/Alaska Nat									
Total U.S.	28.7	35.3	23.7	-2.8*	-2.2*	-2.7*			
CHSDA Counties	36.7	45.0	30.6	-1.8*	-1.2*	-1.7*			
Non-CHSDA Counties	19.9	24.8	15.9	-2.5*	-3.4*	-2.5*			
Hispanic ^e	18.9	26.5	13.3	-2.4*	-3.4*	-1.2*			

The AAPC is the Average Annual Percent Change over the time interval. The AAPCs are calculated by the Joinpoint Regression Program Version 4.6, February 2018, National Cancer Institute.

- Statistic not shown. Rate based on less than 16 cases for the time interval.

Trend based on less than 10 cases for at least one year within the time interval.

a Rates are age-adjusted to the 2000 US Std Population (19 age groups - Census P25-1130). Trends are based on rates age-adjusted to the 2000 US Std Population (19 age groups - Census P25-1130).

b The SEER 9 areas are San Francisco, Connecticut, Detroit, Hawaii, Iowa, New Mexico, Seattle, Utah, and Atlanta.

The SEER 13 areas comprise the SEER 9 areas plus San Jose-Monterey, Los Angeles, the Alaska Native Registry, and Rural Georgia.

The SEER 18 areas comprise the SEER 13 areas plus California excluding SF/SJM/LA, Kentucky, Louisiana, New Jersey, and Georgia excluding ATL/RG.

c The 2006-2015 AAPC estimates are based on a Joinpoint analysis with up to 4 Joinpoints over diagnosis years 1992-2015.

d The 2006-2015 AAPC estimates are based on a Joinpoint analysis with up to 5 Joinpoints over diagnosis years 1975-2015.

e Hispanic and Non-Hispanic are not mutually exclusive from whites, blacks, Asian/Pacific Islanders, and American Indians/Alaska Natives. Incidence data for Hispanics and Non-Hispanics are based on NHIA and exclude cases from the Alaska Native Registry. The 2006-2015 Hispanic and Non-Hispanic mortality trends exclude deaths from New Hampshire and Oklahoma.

f Incidence data for American Indian/Alaska Native are based on the CHSDA (Contract Health Service Delivery Area) counties.

g US Mortality Files, National Center for Health Statistics, CDC.

h The 2006-2015 mortality AAPCs are based on a Joinpoint analysis using years of death 1992-2015.

* The APC is significantly different from zero (p<.05).

Table 15.22
Cancer of the Lung And Bronchus (Invasive)

Age-Adjusted SEER Incidence Rates^a
By Registry, Race and Sex

	All Races			Whites			Blacks		
	Total	Males	Females	Total	Males	Females	Total	Males	Females
<u>SEER Incidence Rates^a, 2011-2015</u>									
California	43.35	49.21	38.97	44.22	48.75	40.86	54.11	65.71	46.08
Greater Bay Area	42.26	47.86	38.14	42.12	44.65	40.44	60.76	73.32	51.71
San Francisco-Oakland	43.57	48.73	39.78	42.89	44.15	42.23	64.04	77.39	54.73
San Jose-Monterey	39.75	46.22	34.91	40.79	45.51	37.29	39.88	49.77	30.64
Los Angeles	37.44	44.73	32.09	36.61	42.77	31.98	52.37	63.61	45.17
Greater California	46.38	51.63	42.42	47.67	52.11	44.38	52.78	64.25	44.26
Connecticut	60.98	67.86	56.18	62.04	68.08	57.89	53.90	71.40	43.02
Detroit	71.60	82.21	64.19	71.22	79.63	65.51	77.63	98.85	63.74
Georgia	64.94	82.87	51.72	68.75	84.48	56.82	57.14	82.99	40.43
Atlanta	52.82	63.69	45.45	54.27	62.24	48.91	53.53	71.74	42.49
Rural Georgia	62.00	87.69	42.50	63.30	85.28	46.03	58.58	96.48	33.51
Greater Georgia	70.63	91.14	55.11	74.04	92.23	59.97	60.09	90.46	39.61
Hawaii	46.16	56.78	37.62	47.36	51.17	43.39	51.44	54.30	-
Iowa	63.60	77.07	53.40	63.53	76.88	53.42	77.97	96.13	64.29
Kentucky	93.48	112.76	78.98	94.33	113.67	79.75	90.45	109.55	76.93
Louisiana	68.83	87.60	54.41	68.11	82.37	57.08	72.35	105.80	48.97
New Jersey	57.34	64.31	52.61	59.92	66.03	55.86	55.11	68.73	46.78
New Mexico	40.27	46.13	35.58	42.28	47.88	37.76	44.48	56.61	35.81
Seattle-Puget Sound	57.39	63.32	52.93	58.72	63.89	54.85	59.32	72.19	48.80
Utah	27.59	32.33	23.72	27.43	32.07	23.64	52.57	65.64	-
SEER 9 Areas ^b	53.84	61.73	47.98	54.71	61.13	49.99	63.20	80.81	51.55
SEER 13 Areas ^b	49.51	57.30	43.73	50.32	56.68	45.60	60.08	76.20	49.37
SEER 18 Areas ^b	54.63	63.76	47.76	56.13	63.94	50.25	61.40	81.22	47.91

^a Rates are per 100,000 and are age-adjusted to the 2000 US Std Population (19 age groups - Census P25-1130)

^b The SEER 9 areas are San Francisco, Connecticut, Detroit, Hawaii, Iowa, New Mexico, Seattle, Utah and Atlanta.

The SEER 13 areas comprise the SEER 9 areas plus San Jose-Monterey, Los Angeles, the Alaska Native Registry and Rural Georgia.

The SEER 18 areas comprise the SEER 13 areas plus California excluding SF/SJM/LA, Kentucky, Louisiana, New Jersey and Georgia excluding ATL/RG.

- Statistic not shown. Rate based on less than 16 cases for the time interval.

Table 15.23
Cancer of the Lung And Bronchus (Invasive)

Age-Adjusted SEER Death Rates^a
By Registry, Race and Sex

	All Races			Whites			Blacks		
	Total	Males	Females	Total	Males	Females	Total	Males	Females
<u>SEER Death Rates^a, 2011-2015</u>									
California	32.16	38.32	27.50	33.07	38.28	29.09	41.64	52.43	34.12
Greater Bay Area	29.57	35.08	25.47	30.07	33.52	27.52	42.63	52.59	35.73
San Francisco-Oakland	30.80	36.09	26.88	30.78	33.46	28.89	45.28	56.30	37.78
San Jose-Monterey	27.21	33.15	22.71	28.81	33.62	25.12	25.61	30.84	21.30
Los Angeles	28.59	35.65	23.40	28.01	34.12	23.42	42.88	53.97	35.66
Greater California	34.66	40.60	30.09	35.80	41.14	31.68	39.97	50.96	31.68
Connecticut	37.47	43.89	32.85	38.34	44.06	34.24	32.74	47.88	23.29
Detroit	48.85	59.10	41.48	48.55	57.02	42.41	53.60	72.64	41.23
Georgia	46.20	62.16	34.47	48.75	62.98	37.94	40.93	63.47	26.56
Atlanta	36.56	47.66	28.91	36.85	45.43	30.76	38.25	56.97	27.16
Rural Georgia	47.46	67.70	32.53	48.22	64.25	35.82	45.38	76.58	25.51
Greater Georgia	50.55	68.34	37.18	52.96	69.05	40.56	42.98	67.73	26.38
Hawaii	31.60	39.85	25.03	34.38	37.95	30.64	41.47	53.63	-
Iowa	45.57	58.05	36.06	45.60	58.11	36.06	56.65	66.96	47.30
Kentucky	67.72	86.67	53.49	68.50	87.63	54.05	63.66	81.08	51.54
Louisiana	53.62	70.61	40.67	52.45	65.59	42.26	58.22	88.72	37.37
New Jersey	38.32	45.93	32.95	39.94	47.09	34.90	39.31	53.02	30.67
New Mexico	30.63	36.28	26.18	32.29	37.88	27.86	33.59	46.46	22.32
Seattle-Puget Sound	39.36	45.90	34.38	40.63	46.69	36.01	40.82	50.13	32.53
Utah	19.49	23.89	15.85	19.55	23.92	15.94	21.55	-	-
SEER 9 Areas ^b	37.01	44.70	31.24	37.79	44.46	32.74	43.84	60.03	33.19
SEER 13 Areas ^b	34.77	42.29	29.14	35.47	41.95	30.55	43.29	58.25	33.41
SEER 18 Areas ^b	39.08	48.01	32.31	40.22	48.22	34.11	45.14	63.15	32.97
Total U.S.	43.37	53.83	35.39	44.13	53.86	36.64	46.21	65.09	33.51

^a US Mortality Files, National Center for Health Statistics, Centers for Disease Control and Prevention. Rates are per 100,000 and are age-adjusted to the 2000 US Std Population (19 age groups - Census P25-1130).

^b The SEER 9 areas are San Francisco, Connecticut, Detroit, Hawaii, Iowa, New Mexico, Seattle, Utah and Atlanta. The SEER 13 areas comprise the SEER 9 areas plus San Jose-Monterey, Los Angeles, the Alaska Native Registry and Rural Georgia. The SEER 18 areas comprise the SEER 13 areas plus California excluding SF/SJM/LA, Kentucky, Louisiana, New Jersey and Georgia excluding ATL/RG.

- Statistic not shown. Rate based on less than 16 cases for the time interval.

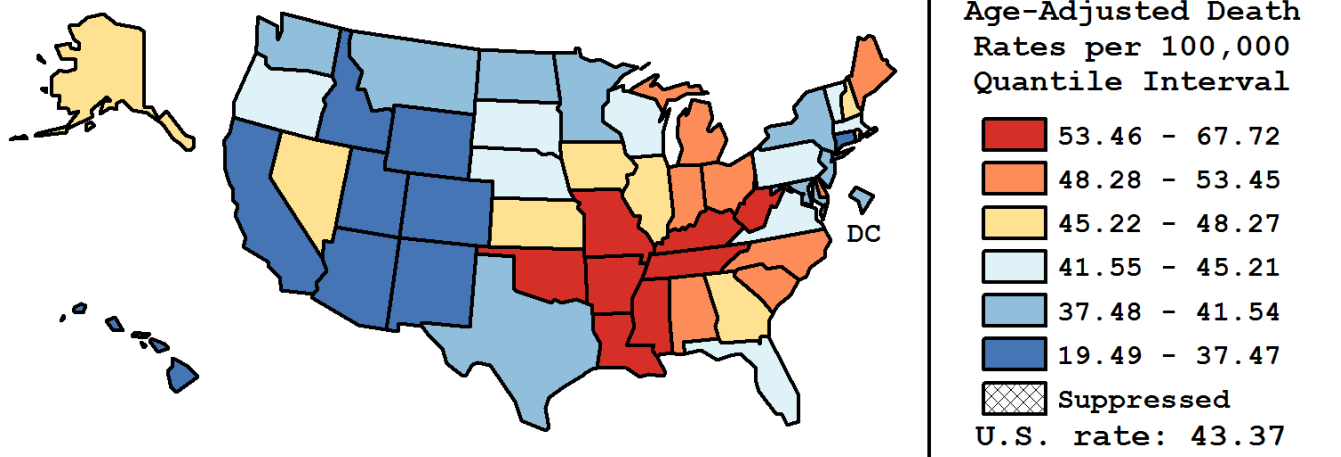
Table 15.24
Cancer of the Lung and Bronchus (Invasive)

Age-Adjusted Cancer Death^a Rates By State, All Races, 2011-2015

Males and Females

State	Rate	SE	Rank(CI) ^d	PD
TOTAL U.S.	43.37	0.05		
High Five States				
Kentucky	67.72	0.52	01(01,01)	56.15 ^c
Arkansas	59.04	0.58	02(02,05)	36.12 ^c
West Virginia	58.80	0.69	03(02,05)	35.57 ^c
Mississippi	57.42	0.59	04(02,05)	32.39 ^c
Tennessee	56.97	0.39	05(03,05)	31.36 ^c
Low Five States				
California	32.16	0.13	47(47,48)	-25.85 ^c
Hawaii	31.60	0.62	48(47,50)	-27.15 ^c
New Mexico	30.63	0.51	49(48,50)	-29.38 ^c
Colorado	30.20	0.35	50(48,50)	-30.38 ^c
Utah	19.49	0.42	51(51,51)	-55.07 ^c

State	Rate	SE	Rank(CI) ^d	PD	State	Rate	SE	Rank(CI) ^d	PD
Alabama	53.39	0.43	10(06,10)	23.09 ^c	Montana	41.09	0.81	35(32,43)	-5.26 ^c
Alaska	46.00	1.38	20(13,32)	6.07 ^c	Nebraska	42.20	0.64	32(27,37)	-2.71
Arizona	35.29	0.30	45(44,46)	-18.64 ^c	Nevada	45.40	0.57	24(17,27)	4.68
Arkansas	59.04	0.58	02(02,05)	36.12 ^c	New Hampshire	45.58	0.76	22(17,30)	5.09 ^c
California	32.16	0.13	47(47,48)	-25.85 ^c	New Jersey	38.32	0.28	42(37,43)	-11.65 ^c
Colorado	30.20	0.35	50(48,50)	-30.38 ^c	New Mexico	30.63	0.51	49(48,50)	-29.38 ^c
Connecticut	37.47	0.42	43(37,44)	-13.61 ^c	New York	38.94	0.19	39(37,42)	-10.21 ^c
Delaware	48.84	0.94	14(11,18)	12.61 ^c	North Carolina	49.01	0.30	13(12,16)	13.01 ^c
D.C.	38.89	1.15	40(32,44)	-10.35 ^c	North Dakota	39.52	0.99	37(33,44)	-8.89 ^c
Florida	42.44	0.18	30(28,34)	-2.15	Ohio	51.71	0.27	11(11,13)	19.22 ^c
Georgia	46.20	0.31	19(17,23)	6.51 ^c	Oklahoma	55.70	0.51	06(05,10)	28.42 ^c
Hawaii	31.60	0.62	48(47,50)	-27.15 ^c	Oregon	42.33	0.43	31(27,34)	-2.41
Idaho	36.12	0.65	44(43,46)	-16.71 ^c	Pennsylvania	45.21	0.24	25(20,27)	4.23
Illinois	46.35	0.26	18(17,23)	6.86 ^c	Rhode Island	48.27	0.88	17(13,24)	11.30 ^c
Indiana	53.45	0.39	09(06,10)	23.22 ^c	South Carolina	48.84	0.42	15(12,18)	12.60 ^c
Iowa	45.57	0.49	23(20,28)	5.07 ^c	South Dakota	42.87	0.93	29(23,37)	-1.15
Kansas	45.91	0.54	21(18,27)	5.85 ^c	Tennessee	56.97	0.39	05(03,05)	31.36 ^c
Kentucky	67.72	0.52	01(01,01)	56.15 ^c	Texas	38.96	0.18	38(36,40)	-10.16 ^c
Louisiana	53.62	0.47	08(06,10)	23.63 ^c	Utah	19.49	0.42	51(51,51)	-55.07 ^c
Maine	51.56	0.76	12(10,15)	18.88 ^c	Vermont	44.73	1.07	26(15,29)	3.13
Maryland	41.54	0.37	34(28,36)	-4.22	Virginia	44.02	0.32	27(22,29)	1.49
Massachusetts	42.08	0.33	33(28,34)	-2.97	Washington	40.59	0.33	36(32,37)	-6.41 ^c
Michigan	48.54	0.29	16(14,18)	11.91 ^c	West Virginia	58.80	0.69	03(02,05)	35.57 ^c
Minnesota	38.80	0.36	41(37,43)	-10.53 ^c	Wisconsin	42.97	0.36	28(27,34)	-0.94
Mississippi	57.42	0.59	04(02,05)	32.39 ^c	Wyoming	35.27	1.08	46(41,46)	-18.67 ^c
Missouri	54.08	0.39	07(06,10)	24.68 ^c					



^a US Mortality Files, National Center for Health Statistics, Centers for Disease Control and Prevention. Rates are per 100,000 and are age-adjusted to the 2000 US Std Population (19 age groups - Census P25-1130).

^b Difference between state rate and total U.S. rate is statistically significant ($p \leq .0002$).

^c Absolute percent difference between state rate and total U.S. rate is 5% or more.

^d Rank of state level death rate and the 95% confidence intervals (low, high) for the rank.

SE Standard error of the rate.

PD Percent difference between state rate and total U.S. rate.

- Statistic not shown. Rate based on less than 16 cases for the time interval.

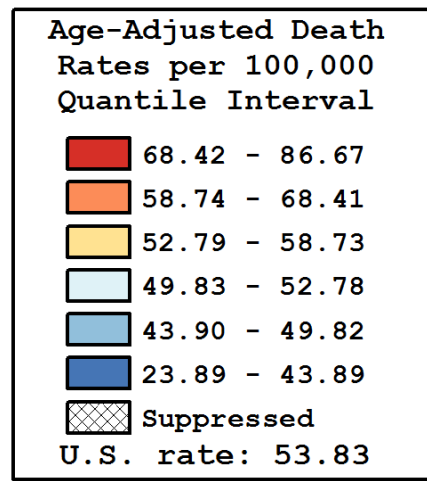
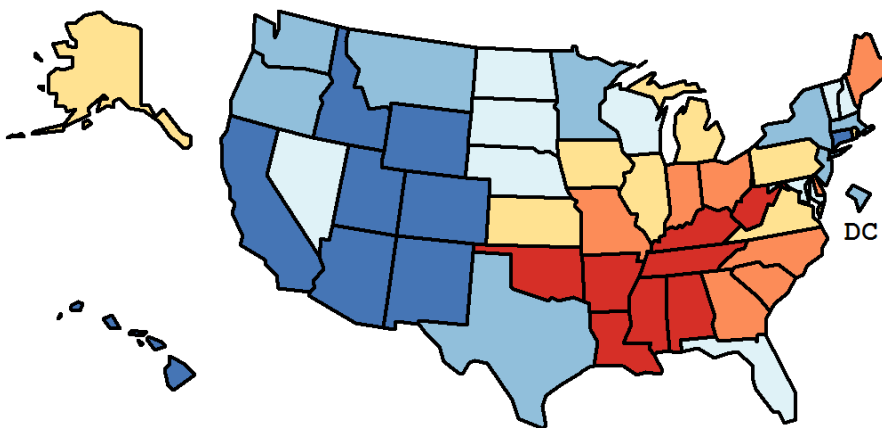
Table 15.25
Cancer of the Lung and Bronchus (Invasive)

Age-Adjusted Cancer Death^a Rates By State, All Races, 2011-2015

Males

State	Rate	SE	Rank(CI) ^d	PD
TOTAL U.S.	53.83	0.08		
High Five States				
Kentucky	86.67	0.90	01(01,01)	60.99 ^c
Mississippi	80.30	1.08	02(02,03)	49.16 ^c
Arkansas	78.52	1.01	03(02,05)	45.86 ^c
West Virginia	75.74	1.19	04(03,07)	40.69 ^c
Tennessee	75.10	0.69	05(03,06)	39.50 ^c
Low Five States				
Wyoming	39.82	1.70	47(42,49)	-26.03 ^c
California	38.32	0.22	48(46,49)	-28.82 ^c
New Mexico	36.28	0.84	49(47,50)	-32.61 ^c
Colorado	33.96	0.56	50(49,50)	-36.91 ^c
Utah	23.89	0.69	51(51,51)	-55.62 ^c

State	Rate	SE	Rank(CI) ^d	PD	State	Rate	SE	Rank(CI) ^d	PD
Alabama	73.70	0.79	06(04,06)	36.90 ^c	Montana	45.73	1.26	42(37,46)	-15.05 ^c
Alaska	53.05	2.22	24(17,40)	-1.46	Nebraska	52.50	1.07	27(22,35)	-2.48
Arizona	41.50	0.48	45(43,47)	-22.91 ^c	Nevada	51.14	0.89	31(24,37)	-5.00 ^c
Arkansas	78.52	1.01	03(02,05)	45.86 ^c	New Hampshire	52.58	1.23	26(22,37)	-2.33
California	38.32	0.22	48(46,49)	-28.82 ^c	New Jersey	45.93	0.47	40(37,42)	-14.68 ^c
Colorado	33.96	0.56	50(49,50)	-36.91 ^c	New Mexico	36.28	0.84	49(47,50)	-32.61 ^c
Connecticut	43.89	0.69	43(40,44)	-18.47 ^c	New York	47.46	0.32	37(36,41)	-11.85 ^c
Delaware	59.45	1.57	16(12,22)	10.43 ^c	North Carolina	65.02	0.53	11(10,13)	20.77 ^c
D.C.	47.18	1.98	39(25,44)	-12.37 ^c	North Dakota	50.56	1.68	32(23,41)	-6.07 ^c
Florida	52.15	0.29	28(24,31)	-3.13	Ohio	64.59	0.47	13(11,14)	19.98 ^c
Georgia	62.16	0.57	15(13,16)	15.47 ^c	Oklahoma	70.04	0.86	08(07,10)	30.11 ^c
Hawaii	39.85	1.03	46(44,49)	-25.99 ^c	Oregon	48.27	0.69	36(31,40)	-10.33 ^c
Idaho	41.94	1.04	44(42,47)	-22.09 ^c	Pennsylvania	57.11	0.40	21(17,23)	6.09 ^c
Illinois	57.35	0.44	20(17,23)	6.54 ^c	Rhode Island	58.73	1.48	17(15,26)	9.10 ^c
Indiana	68.41	0.66	09(07,10)	27.07 ^c	South Carolina	64.92	0.74	12(10,14)	20.59 ^c
Iowa	58.05	0.84	19(16,24)	7.83 ^c	South Dakota	52.78	1.54	25(18,35)	-1.96
Kansas	55.91	0.89	22(18,26)	3.86	Tennessee	75.10	0.69	05(03,06)	39.50 ^c
Kentucky	86.67	0.90	01(01,01)	60.99 ^c	Texas	49.82	0.31	34(28,36)	-7.46 ^c
Louisiana	70.61	0.83	07(06,09)	31.16 ^c	Utah	23.89	0.69	51(51,51)	-55.62 ^c
Maine	63.35	1.26	14(11,17)	17.67 ^c	Vermont	51.30	1.72	30(19,38)	-4.70
Maryland	50.02	0.62	33(27,37)	-7.09 ^c	Virginia	55.33	0.55	23(19,26)	2.78
Massachusetts	49.49	0.55	35(28,37)	-8.08 ^c	Washington	47.43	0.54	38(34,40)	-11.89 ^c
Michigan	58.58	0.48	18(16,19)	8.81 ^c	West Virginia	75.74	1.19	04(03,07)	40.69 ^c
Minnesota	45.84	0.59	41(38,43)	-14.85 ^c	Wisconsin	51.75	0.59	29(24,35)	-3.88
Mississippi	80.30	1.08	02(02,03)	49.16 ^c	Wyoming	39.82	1.70	47(42,49)	-26.03 ^c
Missouri	67.33	0.66	10(08,12)	25.06 ^c					



^a US Mortality Files, National Center for Health Statistics, Centers for Disease Control and Prevention. Rates are per 100,000 and are age-adjusted to the 2000 US Std Population (19 age groups - Census P25-1130).

^b Difference between state rate and total U.S. rate is statistically significant ($p \leq .0002$).

^c Absolute percent difference between state rate and total U.S. rate is 5% or more.

^d Rank of state level death rate and the 95% confidence intervals (low, high) for the rank.

SE Standard error of the rate.

PD Percent difference between state rate and total U.S. rate.

- Statistic not shown. Rate based on less than 16 cases for the time interval.

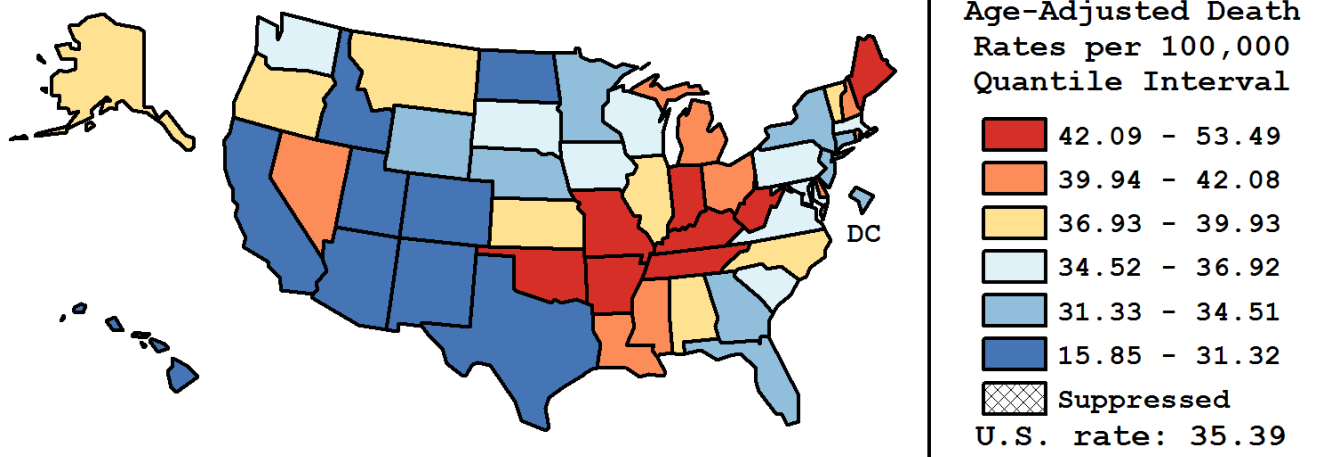
Table 15.26
Cancer of the Lung And Bronchus (Invasive)

Age-Adjusted Cancer Death^a Rates By State, All Races, 2011-2015

Females

State	Rate	SE	Rank(CI) ^d	PD
TOTAL U.S.	35.39	0.06		
High Five States				
Kentucky	53.49	0.62	01(01,01)	51.13 ^c
West Virginia	45.73	0.84	02(02,04)	29.20 ^c
Oklahoma	44.63	0.62	03(02,09)	26.10 ^c
Missouri	44.03	0.48	04(02,08)	24.40 ^c
Arkansas	43.73	0.68	05(02,13)	23.55 ^c
Low Five States				
California	27.50	0.16	47(46,48)	-22.31 ^c
Colorado	27.34	0.45	48(46,49)	-22.77 ^c
New Mexico	26.18	0.64	49(48,50)	-26.04 ^c
Hawaii	25.03	0.75	50(49,50)	-29.30 ^c
Utah	15.85	0.51	51(51,51)	-55.21 ^c

State	Rate	SE	Rank(CI) ^d	PD	State	Rate	SE	Rank(CI) ^d	PD
Alabama	38.21	0.49	21(15,24)	7.95	Montana	37.41	1.07	23(17,39)	5.70
Alaska	39.93	1.76	17(02,31)	12.80 ^c	Nebraska	34.37	0.78	36(28,43)	-2.90
Arizona	30.15	0.38	46(43,46)	-14.82 ^c	Nevada	40.61	0.73	14(06,20)	14.74 ^c
Arkansas	43.73	0.68	05(02,13)	23.55 ^c	New Hampshire	40.49	0.98	15(06,24)	14.39 ^c
California	27.50	0.16	47(46,48)	-22.31 ^c	New Jersey	32.95	0.34	38(35,43)	-6.92
Colorado	27.34	0.45	48(46,49)	-22.77 ^c	New Mexico	26.18	0.64	49(48,50)	-26.04 ^c
Connecticut	32.85	0.53	40(31,42)	-7.18	New York	32.87	0.23	39(35,42)	-7.15
Delaware	40.91	1.15	12(03,21)	15.58 ^c	North Carolina	37.09	0.35	24(20,29)	4.78
D.C.	32.74	1.39	41(24,46)	-7.51	North Dakota	31.29	1.21	44(35,48)	-11.59 ^c
Florida	34.51	0.22	34(30,37)	-2.51	Ohio	42.08	0.33	09(06,14)	18.89 ^c
Georgia	34.47	0.36	35(29,38)	-2.62	Oklahoma	44.63	0.62	03(02,09)	26.10 ^c
Hawaii	25.03	0.75	50(49,50)	-29.30 ^c	Oregon	37.77	0.55	22(16,27)	6.70
Idaho	31.32	0.83	43(39,46)	-11.52 ^c	Pennsylvania	36.51	0.29	27(23,32)	3.14
Illinois	38.33	0.32	19(16,23)	8.30	Rhode Island	41.11	1.08	10(03,22)	16.14 ^c
Indiana	42.17	0.46	08(04,14)	19.14 ^c	South Carolina	36.56	0.49	26(20,31)	3.30
Iowa	36.06	0.60	29(24,38)	1.87	South Dakota	35.63	1.17	30(21,43)	0.65
Kansas	38.23	0.67	20(17,31)	8.00	Tennessee	43.25	0.46	06(03,12)	22.18 ^c
Kentucky	53.49	0.62	01(01,01)	51.13 ^c	Texas	30.62	0.22	45(41,45)	-13.50 ^c
Louisiana	40.67	0.55	13(08,18)	14.90 ^c	Utah	15.85	0.51	51(51,51)	-55.21 ^c
Maine	42.36	0.93	07(03,18)	19.68 ^c	Vermont	39.63	1.38	18(03,26)	11.96 ^c
Maryland	35.38	0.45	32(23,35)	-0.05	Virginia	35.39	0.38	31(25,35)	-0.02
Massachusetts	36.92	0.41	25(20,30)	4.30	Washington	35.29	0.42	33(24,36)	-0.30
Michigan	40.93	0.36	11(09,18)	15.62 ^c	West Virginia	45.73	0.84	02(02,04)	29.20 ^c
Minnesota	33.56	0.46	37(35,43)	-5.19	Wisconsin	36.45	0.45	28(21,32)	2.98
Mississippi	40.46	0.66	16(08,21)	14.32 ^c	Wyoming	31.85	1.42	42(28,47)	-10.01 ^c
Missouri	44.03	0.48	04(02,08)	24.40 ^c					



^a US Mortality Files, National Center for Health Statistics, Centers for Disease Control and Prevention. Rates are per 100,000 and are age-adjusted to the 2000 US Std Population (19 age groups - Census P25-1130).

^b Difference between state rate and total U.S. rate is statistically significant ($p \leq .0002$).

^c Absolute percent difference between state rate and total U.S. rate is 5% or more.

^d Rank of state level death rate and the 95% confidence intervals (low, high) for the rank.

SE Standard error of the rate.

PD Percent difference between state rate and total U.S. rate.

- Statistic not shown. Rate based on less than 16 cases for the time interval.

Table 15.27
Cancer of the Lung And Bronchus (Invasive)

Estimated United States Cancer Prevalence Counts^a on January 1, 2015
By Race/Ethnicity, Sex and Years Since Diagnosis

Years Since Diagnosis		0 to <5	5 to <10	10 to <15	15 to <20	20 to <25	25 to <30	0 to <23 ^e	0 to <40 ^e	>=40 ^g	Complete ^h
<u>Race</u>	<u>Sex</u>										
All Races ^b	Both Sexes	314,786	112,172	51,962	27,782	14,327	7,630	521,029	534,600	6,435	541,035
	Males	143,223	47,327	21,646	11,459	5,922	3,048	229,580	235,174	3,730	238,904
	Females	171,563	64,845	30,316	16,323	8,405	4,582	291,449	299,426	2,705	302,131
White ^b	Both Sexes	264,728	96,906	45,241	24,266	12,518	6,914	443,660	455,745	2,300	458,045
	Males	119,897	40,327	18,431	9,735	5,073	2,729	193,465	198,360	1,061	199,421
	Females	144,831	56,579	26,810	14,531	7,445	4,185	250,195	257,385	1,239	258,624
Black ^b	Both Sexes	35,671	10,846	4,793	2,496	1,370	523	55,175	56,271	210	56,481
	Males	16,502	4,950	2,259	1,163	613	225	25,487	25,996	109	26,105
	Females	19,169	5,896	2,534	1,333	757	298	29,688	30,275	101	30,376
Asian/ Pacific Islander ^c	Both Sexes	10,982	3,155	1,442	+	+	+	16,563	+	+	+
	Males	5,381	1,494	685	+	+	+	8,063	+	+	+
	Females	5,601	1,661	757	+	+	+	8,500	+	+	+
Hispanic ^d	Both Sexes	12,090	4,086	1,939	+	+	+	19,382	+	+	+
	Males	5,530	1,751	867	+	+	+	8,720	+	+	+
	Females	6,560	2,335	1,072	+	+	+	10,662	+	+	+

Estimated prevalence percent^a on January 1, 2015, of the SEER^c population diagnosed in the previous 23 years
By Age at Prevalence, Race/Ethnicity and Sex

Age at Prevalence		All Ages	Age Specific (Crude)								Age-Adjusted ^f	
			0-9	10-19	20-29	30-39	40-49	50-59	60-69	70-79	80+	All Ages
<u>Race</u>	<u>Sex</u>											
All Races ^c	Both Sexes	0.1364%	0.0002%	0.0004%	0.0017%	0.0063%	0.0246%	0.1191%	0.3639%	0.8598%	0.9193%	0.1270%
	Males	0.1227%	0.0002%	0.0005%	0.0016%	0.0057%	0.0214%	0.1025%	0.3558%	0.8595%	1.0278%	0.1274%
	Females	0.1498%	-	0.0003%	0.0018%	0.0070%	0.0278%	0.1351%	0.3712%	0.8600%	0.8535%	0.1276%
White ^c	Both Sexes	0.1487%	0.0002%	0.0005%	0.0020%	0.0064%	0.0251%	0.1168%	0.3669%	0.9037%	0.9620%	0.1311%
	Males	0.1301%	-	0.0005%	0.0017%	0.0054%	0.0214%	0.0990%	0.3458%	0.8749%	1.0439%	0.1277%
	Females	0.1672%	-	0.0005%	0.0023%	0.0073%	0.0289%	0.1345%	0.3867%	0.9280%	0.9115%	0.1350%
Black ^c	Both Sexes	0.1161%	-	-	0.0013%	0.0068%	0.0266%	0.1651%	0.4692%	0.8846%	0.7773%	0.1369%
	Males	0.1117%	-	-	0.0018%	0.0068%	0.0261%	0.1409%	0.5314%	0.9925%	1.0044%	0.1529%
	Females	0.1201%	-	-	-	0.0068%	0.0271%	0.1863%	0.4204%	0.8092%	0.6640%	0.1273%
Asian/ Pacific Islander ^c	Both Sexes	0.0998%	-	-	0.0007%	0.0058%	0.0222%	0.0974%	0.2774%	0.6094%	0.7516%	0.0969%
	Males	0.1009%	-	-	-	0.0052%	0.0197%	0.0952%	0.3019%	0.7015%	0.9421%	0.1098%
	Females	0.0988%	-	-	-	0.0063%	0.0244%	0.0992%	0.2574%	0.5374%	0.6339%	0.0879%
Hispanic ^d	Both Sexes	0.0360%	-	-	0.0016%	0.0041%	0.0132%	0.0498%	0.1575%	0.4191%	0.4979%	0.0619%
	Males	0.0319%	-	-	0.0013%	0.0036%	0.0124%	0.0425%	0.1475%	0.4455%	0.5986%	0.0650%
	Females	0.0401%	-	-	0.0019%	0.0046%	0.0140%	0.0569%	0.1661%	0.3993%	0.4369%	0.0603%

^a US 2015 cancer prevalence counts are based on 2015 cancer prevalence proportions from the SEER registries and 1/1/2015 US population estimates based on the average of 2014 and 2015 population estimates from the US Bureau of the Census. Prevalence was calculated using the first invasive tumor for each cancer site diagnosed during the previous 40/23 years.

^{b c d} Statistics based on (b) SEER 9 Areas (c) SEER 13 Areas excluding the Alaska Native Registry

(d) NHIA for Hispanic for SEER 13 Areas excluding the Alaska Native Registry.

^e Maximum limited-duration prevalence: 40 years for 1975-2015 SEER 9 data; 23 years for 1992-2015 SEER 13 data (excluding the Alaska Native Registry) used to calculate prevalence for Hispanics and Asian Pacific Islanders.

^f Percentages are age-adjusted to the 2000 US Standard Population (19 age groups - Census P25-1130) by 5-year age groups.

^{g h i} (g) Cases diagnosed more than 40 years ago were estimated using the completeness index method (Capocaccia et. al. 1997, Merrill et. al. 2000). (h) Complete prevalence is obtained by summing 0 to <40 and >=40. (i) Age-specific completeness index was approximated using empirical data from historical Connecticut tumor registry.

- Statistic not shown. Statistic based on fewer than 5 cases estimated alive in SEER for the time interval.

+ Not available.

Table 15.28

Cancer of the Lung and Bronchus (Invasive)

Percent Distribution and Counts by Histology among Histologically Confirmed Cases, 2011-2015
Both Sexes by Race

Histology ^a	All Races			White		Black		Asian/Pacific Islander		American Indian/Alaska Native ^b		Hispanic ^c	
	Rate	Count	Percent	Count	Percent	Count	Percent	Count	Percent	Count	Percent	Count	Percent
Carcinoma	48.1	227,250	99.7%	184,947	99.7%	25,930	99.8%	14,663	99.8%	825	99.5%	13,448	99.5%
Small cell (8002,8041-8045)	6.1	29,501	12.9%	25,602	13.8%	2,650	10.2%	1,047	7.1%	119	14.4%	1,416	10.5%
Non-small cell	40.6	191,281	83.9%	154,148	83.1%	22,467	86.4%	13,215	89.9%	676	81.5%	11,578	85.6%
Squamous and transitional cell ^d	11.4	52,928	23.2%	43,862	23.6%	6,370	24.5%	2,265	15.4%	246	29.7%	2,579	19.1%
Adenocarcinoma ^e	23.1	109,146	47.9%	86,323	46.5%	12,597	48.5%	9,447	64.3%	322	38.8%	7,038	52.1%
Large cell ^f	0.7	3,407	1.5%	2,781	1.5%	453	1.7%	155	1.1%	-	-	166	1.2%
Non-small cell carcinoma ^g	2.9	13,900	6.1%	11,060	6.0%	1,915	7.4%	798	5.4%	65	7.8%	889	6.6%
Other specified carcinomas ^h	2.5	11,900	5.2%	10,122	5.5%	1,132	4.4%	550	3.7%	36	4.3%	906	6.7%
Carcinoma, NOS ⁱ	1.4	6,468	2.8%	5,197	2.8%	813	3.1%	401	2.7%	30	3.6%	454	3.4%
Sarcoma ^j	0.1	419	0.2%	350	0.2%	41	0.2%	20	0.1%	-	-	53	0.4%
Other specified types ^k	0.0	220	0.1%	184	0.1%	24	0.1%	-	-	-	-	17	0.1%
Total	48.3	227,889	100.0%	185,481	100.0%	25,995	100.0%	14,694	100.0%	829	100.0%	13,518	100.0%

Source: SEER 18 areas (San Francisco, Connecticut, Detroit, Hawaii, Iowa, New Mexico, Seattle, Utah, Atlanta, San Jose-Monterey, Los Angeles, Alaska Native Registry, Rural Georgia, California excluding SF/SJM/LA, Kentucky, Louisiana, New Jersey and Georgia excluding ATL/RG).

Percentages may not sum to 100 due to rounding.

^a Excludes Kaposi Sarcoma, mesothelioma, lymphomas, leukemias, myelomas, lymphoreticular, and immunoproliferative diseases.

^b Estimates for American Indian/Alaska Native are based on the CHSDA (Contract Health Service Delivery Area) counties.

^c Hispanic is not mutually exclusive from whites, blacks, Asian/Pacific Islanders, and American Indians/Alaska Natives.

Underlying incidence data for Hispanics are based on NHIA and exclude cases from the Alaska Native Registry.

^d Squamous and transitional cell includes histologies 8051-8052, 8070-8076, 8078, 8083-8084, 8090, 8094, 8120, 8123.

^e Adenocarcinoma includes histologies 8015, 8050, 8140-8141, 8143-8145, 8147, 8190, 8201, 8211, 8250-8255, 8260, 8290, 8310, 8320, 8323, 8333, 8401, 8440, 8470-8471, 8480-8481, 8490, 8503, 8507, 8550, 8570-8572, 8574, 8576.

^f Large cell includes histologies 8012-8014, 8021, 8034, 8082.

^g Non-small cell carcinoma includes histology 8046.

^h Other specified carcinomas includes histologies 8003-8004, 8022, 8030, 8031-8033, 8035, 8200, 8240-8241, 8243-8246, 8249, 8430, 8525, 8560, 8562, 8575.

ⁱ Carcinoma, NOS includes histologies 8000-8001, 8010-8011, 8020, 8230.

^j Sarcoma includes histologies 8680, 8711, 8800-8805, 8810-8811, 8815, 8824, 8830, 8840, 8852, 8855, 8890-8891, 8894-8895, 8900-8902, 8910, 8920-8921, 8940, 8990, 9040-9041, 9043, 9120, 9130, 9133, 9150, 9180, 9220, 9231, 9240, 9251, 9473, 9540, 9560, 9580.

^k Other specific types includes melanomas and is defined as histologies 8580, 8650, 8720-8790, 8933, 8963, 8972-8973, 8980-8982, 9064-9065, 9070, 9080, 9084-9085, 9100, 9260, 9364, 9503, 9530.

Note: For this analysis, the following histologies were classified as metastases of another primary site and not included: 8005, 8130, 8146, 8170, 8231, 8247, 8263, 8312, 8340-8341, 8350, 8441, 8460, 8500-8501, 8524, 8530, 8551, 8581, 8585, 8710, 8772, 8806, 8850, 8854, 8896, 8935, 9015, 9042, 9071, 9101, 9181, 9370, 9500, 9561, 9581

- Statistic not shown due to fewer than 16 cases during the time period.

Table 15.29

Cancer of the Lung and Bronchus (Invasive)

Percent Distribution and Counts by Histology among Histologically Confirmed Cases, 2011-2015
Males by Race

Histology ^a	All Races			White		Black		Asian/Pacific Islander		American Indian/Alaska Native ^b		Hispanic ^c	
	Rate	Count	Percent	Count	Percent	Count	Percent	Count	Percent	Count	Percent	Count	Percent
Carcinoma	55.9	118,319	99.7%	95,050	99.7%	14,277	99.7%	8,116	99.8%	429	99.5%	7,041	99.4%
Small cell (8002,8041-8045)	6.7	14,553	12.3%	12,399	13.0%	1,349	9.4%	698	8.6%	63	14.6%	734	10.4%
Non-small cell	47.4	100,099	84.3%	79,766	83.6%	12,422	86.8%	7,174	88.2%	348	80.7%	6,036	85.2%
Squamous and transitional cell ^d	15.8	32,875	27.7%	26,988	28.3%	4,001	27.9%	1,625	20.0%	142	32.9%	1,633	23.1%
Adenocarcinoma ^e	24.5	52,016	43.8%	40,576	42.5%	6,467	45.2%	4,627	56.9%	142	32.9%	3,384	47.8%
Large cell ^f	0.9	1,930	1.6%	1,543	1.6%	275	1.9%	100	1.2%	-	-	102	1.4%
Non-small cell carcinoma ^g	3.7	7,904	6.7%	6,175	6.5%	1,133	7.9%	529	6.5%	39	9.0%	509	7.2%
Other specified carcinomas ^h	2.5	5,374	4.5%	4,484	4.7%	546	3.8%	293	3.6%	21	4.9%	408	5.8%
Carcinoma, NOS ⁱ	1.8	3,667	3.1%	2,885	3.0%	506	3.5%	244	3.0%	18	4.2%	271	3.8%
Sarcoma ^j	0.1	252	0.2%	214	0.2%	22	0.2%	-	-	-	-	33	0.5%
Other specified types ^k	0.1	131	0.1%	107	0.1%	16	0.1%	-	-	-	-	-	-
Total	56.1	118,702	100.0%	95,371	100.0%	14,315	100.0%	8,135	100.0%	431	100.0%	7,081	100.0%

Source: SEER 18 areas (San Francisco, Connecticut, Detroit, Hawaii, Iowa, New Mexico, Seattle, Utah, Atlanta, San Jose-Monterey, Los Angeles, Alaska Native Registry, Rural Georgia, California excluding SF/SJM/LA, Kentucky, Louisiana, New Jersey and Georgia excluding ATL/RG).

Percentages may not sum to 100 due to rounding.

^a Excludes Kaposi Sarcoma, mesothelioma, lymphomas, leukemias, myelomas, lymphoreticular, and immunoproliferative diseases.

^b Estimates for American Indian/Alaska Native are based on the CHSDA (Contract Health Service Delivery Area) counties.

^c Hispanic is not mutually exclusive from whites, blacks, Asian/Pacific Islanders, and American Indians/Alaska Natives.

Underlying incidence data for Hispanics are based on NHIA and exclude cases from the Alaska Native Registry.

^d Squamous and transitional cell includes histologies 8051-8052, 8070-8076, 8078, 8083-8084, 8090, 8094, 8120, 8123.

^e Adenocarcinoma includes histologies 8015, 8050, 8140-8141, 8143-8145, 8147, 8190, 8201, 8211, 8250-8255, 8260, 8290, 8310, 8320, 8323, 8333, 8401, 8440, 8470-8471, 8480-8481, 8490, 8503, 8507, 8550, 8570-8572, 8574, 8576.

^f Large cell includes histologies 8012-8014, 8021, 8034, 8082.

^g Non-small cell carcinoma includes histology 8046.

^h Other specified carcinomas includes histologies 8003-8004, 8022, 8030, 8031-8033, 8035, 8200, 8240-8241, 8243-8246, 8249, 8430, 8525, 8560, 8562, 8575.

ⁱ Carcinoma, NOS includes histologies 8000-8001, 8010-8011, 8020, 8230.

^j Sarcoma includes histologies 8680, 8711, 8800-8805, 8810-8811, 8815, 8824, 8830, 8840, 8852, 8855, 8890-8891, 8894-8895, 8900-8902, 8910, 8920-8921, 8940, 8990, 9040-9041, 9043, 9120, 9130, 9133, 9150, 9180, 9220, 9231, 9240, 9251, 9473, 9540, 9560, 9580.

^k Other specific types includes melanomas and is defined as histologies 8580, 8650, 8720-8790, 8933, 8963, 8972-8973, 8980-8982, 9064-9065, 9070, 9080, 9084-9085, 9100, 9260, 9364, 9503, 9530.

Note: For this analysis, the following histologies were classified as metastases of another primary site and not included: 8005, 8130, 8146, 8170, 8231, 8247, 8263, 8312, 8340-8341, 8350, 8441, 8460, 8500-8501, 8524, 8530, 8551, 8581, 8585, 8710, 8772, 8806, 8850, 8854, 8896, 8935, 9015, 9042, 9071, 9101, 9181, 9370, 9500, 9561, 9581

- Statistic not shown due to fewer than 16 cases during the time period.

Table 15.30

Cancer of the Lung and Bronchus (Invasive)

Percent Distribution and Counts by Histology among Histologically Confirmed Cases, 2011-2015
Females by Race

Histology ^a	All Races			White		Black		Asian/Pacific Islander		American Indian/ Alaska Native ^b		Hispanic ^c	
	Rate	Count	Percent	Count	Percent	Count	Percent	Count	Percent	Count	Percent	Count	Percent
Carcinoma	42.2	108,931	99.8%	89,897	99.8%	11,653	99.8%	6,547	99.8%	396	99.5%	6,407	99.5%
Small cell (8002,8041-8045)	5.7	14,948	13.7%	13,203	14.7%	1,301	11.1%	349	5.3%	56	14.1%	682	10.6%
Non-small cell	35.4	91,182	83.5%	74,382	82.5%	10,045	86.0%	6,041	92.1%	328	82.4%	5,542	86.1%
Squamous and transitional cell ^d	7.9	20,053	18.4%	16,874	18.7%	2,369	20.3%	640	9.8%	104	26.1%	946	14.7%
Adenocarcinoma ^e	22.1	57,130	52.3%	45,747	50.8%	6,130	52.5%	4,820	73.5%	180	45.2%	3,654	56.8%
Large cell ^f	0.6	1,477	1.4%	1,238	1.4%	178	1.5%	55	0.8%	-	-	64	1.0%
Non-small cell carcinoma ^g	2.3	5,996	5.5%	4,885	5.4%	782	6.7%	269	4.1%	26	6.5%	380	5.9%
Other specified carcinomas ^h	2.5	6,526	6.0%	5,638	6.3%	586	5.0%	257	3.9%	-	-	498	7.7%
Carcinoma, NOS ⁱ	1.1	2,801	2.6%	2,312	2.6%	307	2.6%	157	2.4%	-	-	183	2.8%
Sarcoma ^j	0.1	167	0.2%	136	0.2%	19	0.2%	-	-	-	-	20	0.3%
Other specified types ^k	0.0	89	0.1%	77	0.1%	-	-	-	-	-	-	-	-
Total	42.3	109,187	100.0%	90,110	100.0%	11,680	100.0%	6,559	100.0%	398	100.0%	6,437	100.0%

Source: SEER 18 areas (San Francisco, Connecticut, Detroit, Hawaii, Iowa, New Mexico, Seattle, Utah, Atlanta, San Jose-Monterey, Los Angeles, Alaska Native Registry, Rural Georgia, California excluding SF/SJM/LA, Kentucky, Louisiana, New Jersey and Georgia excluding ATL/RG).

Percentages may not sum to 100 due to rounding.

^a Excludes Kaposi Sarcoma, mesothelioma, lymphomas, leukemias, myelomas, lymphoreticular, and immunoproliferative diseases.

^b Estimates for American Indian/Alaska Native are based on the CHSDA (Contract Health Service Delivery Area) counties.

^c Hispanic is not mutually exclusive from whites, blacks, Asian/Pacific Islanders, and American Indians/Alaska Natives.

^d Underlying incidence data for Hispanics are based on NHIA and exclude cases from the Alaska Native Registry.

^e Squamous and transitional cell includes histologies 8051-8052, 8070-8076, 8078, 8083-8084, 8090, 8094, 8120, 8123.

^f Adenocarcinoma includes histologies 8015, 8050, 8140-8141, 8143-8145, 8147, 8190, 8201, 8211, 8250-8255, 8260, 8290, 8310, 8320, 8323, 8333, 8401, 8440, 8470-8471, 8480-8481, 8490, 8503, 8507, 8550, 8570-8572, 8574, 8576.

^g Large cell includes histologies 8012-8014, 8021, 8034, 8082.

^h Non-small cell carcinoma includes histology 8046.

ⁱ Other specified carcinomas includes histologies 8003-8004, 8022, 8030, 8031-8033, 8035, 8200, 8240-8241, 8243-8246, 8249, 8430, 8525, 8560, 8562, 8575.

^j Carcinoma, NOS includes histologies 8000-8001, 8010-8011, 8020, 8230.

^k Sarcoma includes histologies 8680, 8711, 8800-8805, 8810-8811, 8815, 8824, 8830, 8840, 8852, 8855, 8890-8891, 8894-8895, 8900-8902, 8910, 8920-8921, 8940, 8990, 9040-9041, 9043, 9120, 9130, 9133, 9150, 9180, 9220, 9231, 9240, 9251, 9473, 9540, 9560, 9580.

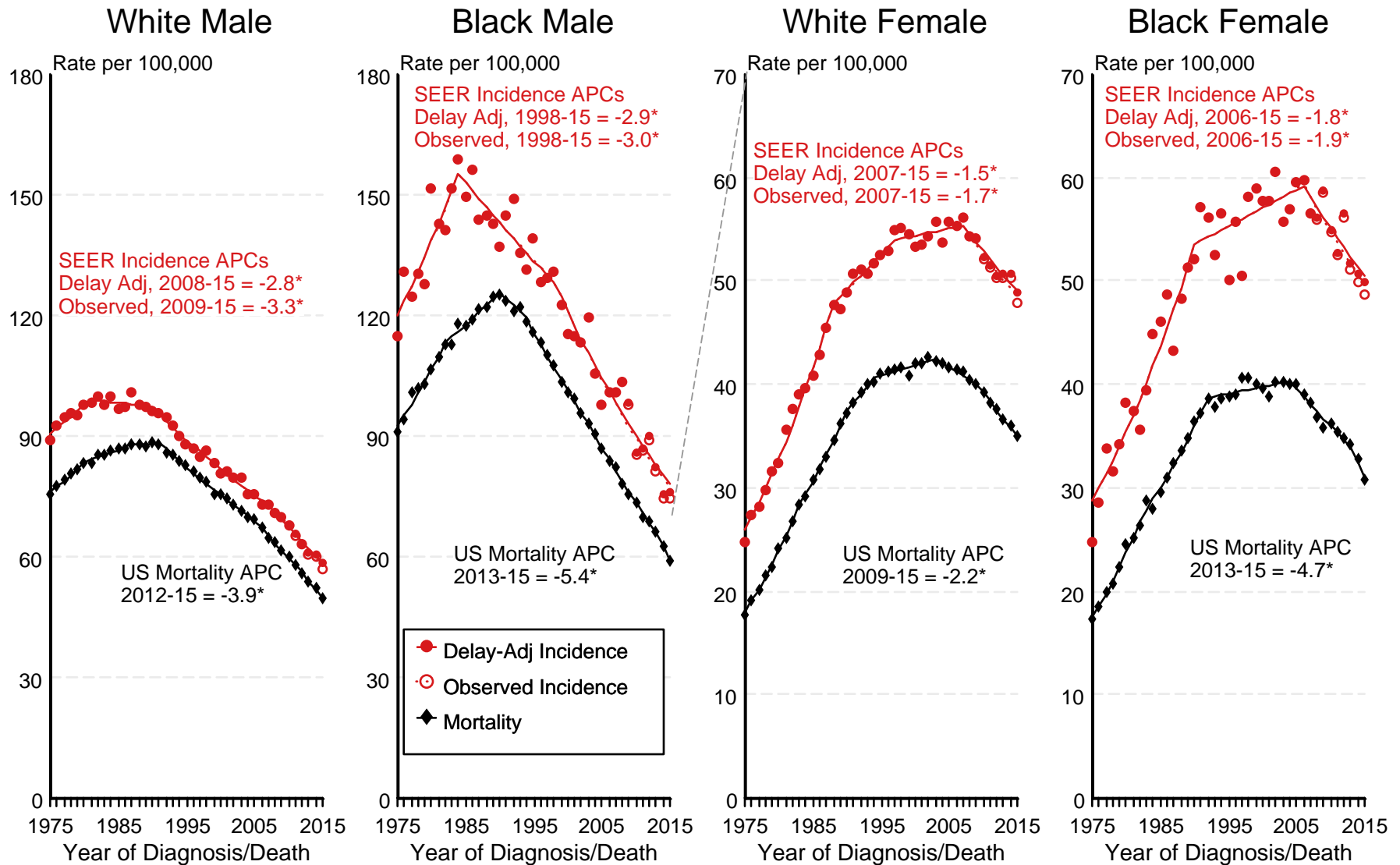
^k Other specific types includes melanomas and is defined as histologies 8580, 8650, 8720-8790, 8933, 8963, 8972-8973, 8980-8982, 9064-9065, 9070, 9080, 9084-9085, 9100, 9260, 9364, 9503, 9530.

Note: For this analysis, the following histologies were classified as metastases of another primary site and not included: 8005, 8130, 8146, 8170, 8231, 8247, 8263, 8312, 8340-8341, 8350, 8441, 8460, 8500-8501, 8524, 8530, 8551, 8581, 8585, 8710, 8772, 8806, 8850, 8854, 8896, 8935, 9015, 9042, 9071, 9101, 9181, 9370, 9500, 9561, 9581

- Statistic not shown due to fewer than 16 cases during the time period.

Figure 15.1

SEER Observed Incidence, SEER Delay Adjusted Incidence and US Death Rates^a Cancer of the Lung and Bronchus, by Race and Sex



Source: SEER 9 areas and US Mortality Files (National Center for Health Statistics, CDC).

^a Rates are age-adjusted to the 2000 US Std Population (19 age groups - Census P25-1103).

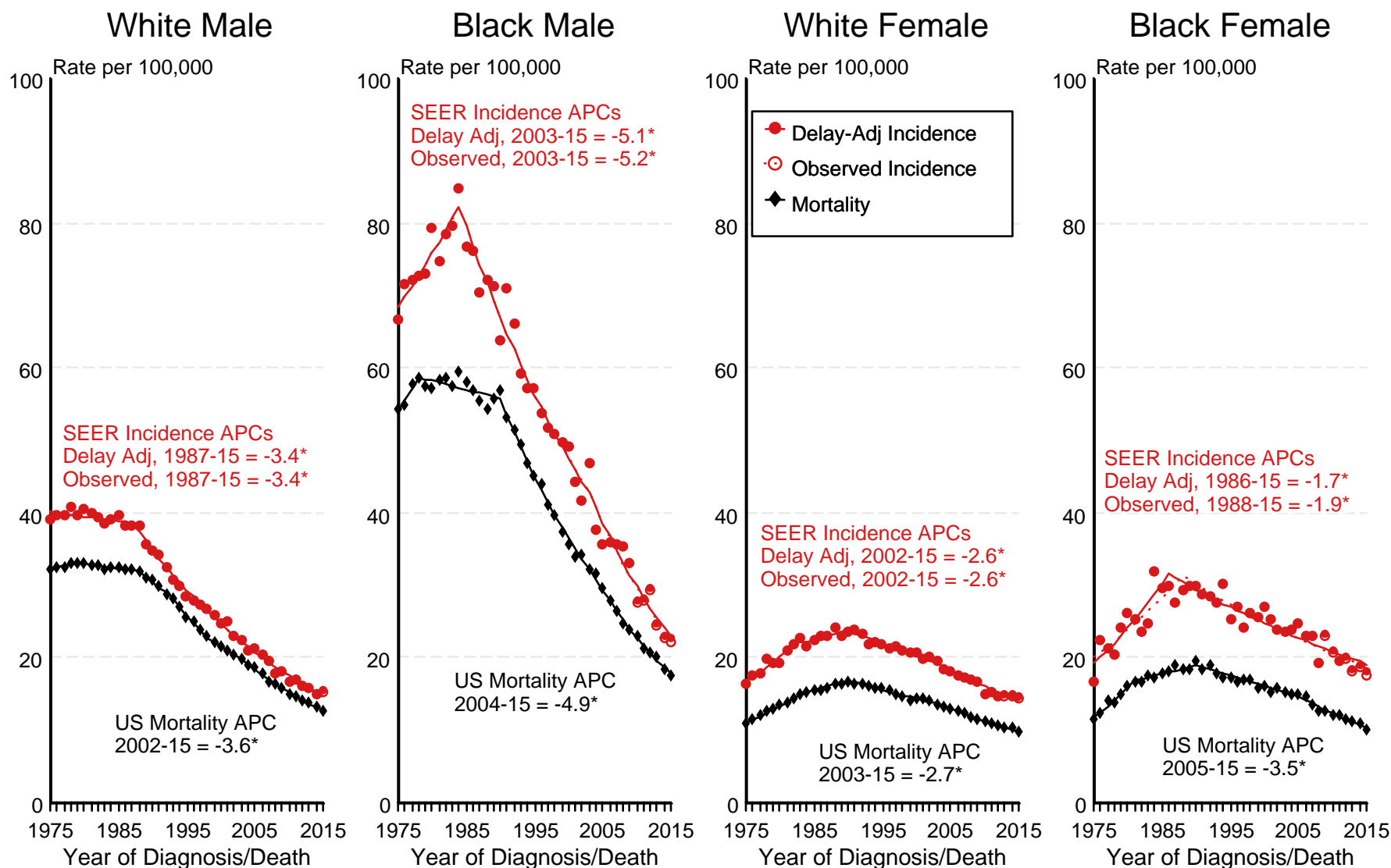
Regression lines and APCs are calculated using the Joinpoint Regression Program Version 4.6, February 2018, National Cancer Institute.

The APC is the Annual Percent Change for the regression line segments. The APC shown on the graph is for the most recent trend.

* The APC is significantly different from zero ($p < 0.05$).

Figure 15.2

SEER Observed Incidence, SEER Delay Adjusted Incidence and US Death Rates^a Cancer of the Lung and Bronchus, Under 65 Years of Age, by Race and Sex



Source: SEER 9 areas and US Mortality Files (National Center for Health Statistics, CDC).

^a Rates are age-adjusted to the 2000 US Std Population (19 age groups - Census P25-1103).

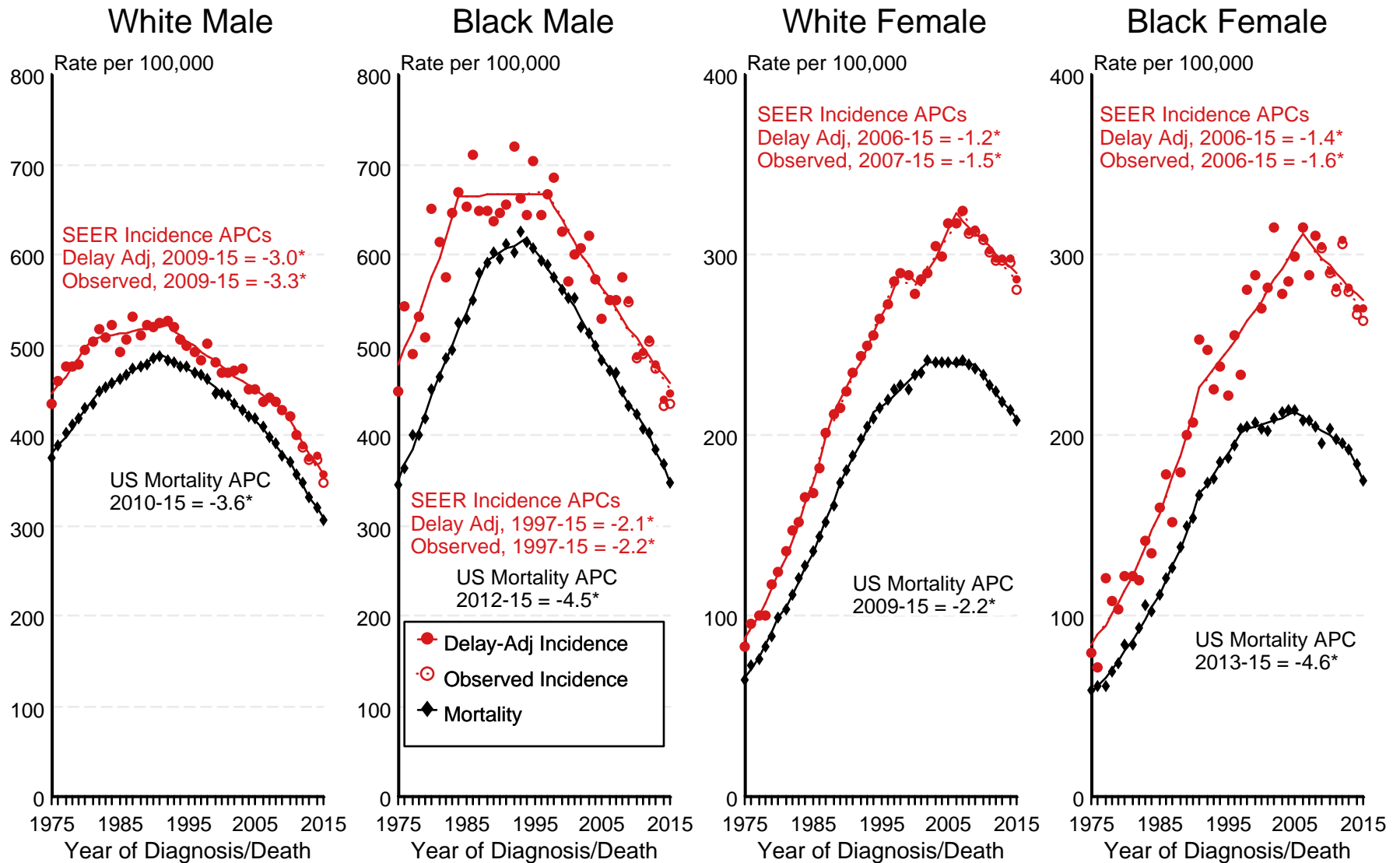
Regression lines and APCs are calculated using the Joinpoint Regression Program Version 4.6, February 2018, National Cancer Institute.

The APC is the Annual Percent Change for the regression line segments. The APC shown on the graph is for the most recent trend.

* The APC is significantly different from zero ($p < 0.05$).

Figure 15.3

SEER Observed Incidence, SEER Delay Adjusted Incidence and US Death Rates^a Cancer of the Lung and Bronchus, Ages 65 and Over, by Race and Sex



Source: SEER 9 areas and US Mortality Files (National Center for Health Statistics, CDC).

^a Rates are age-adjusted to the 2000 US Std Population (19 age groups - Census P25-1103).

Regression lines and APCs are calculated using the Joinpoint Regression Program Version 4.6, February 2018, National Cancer Institute.

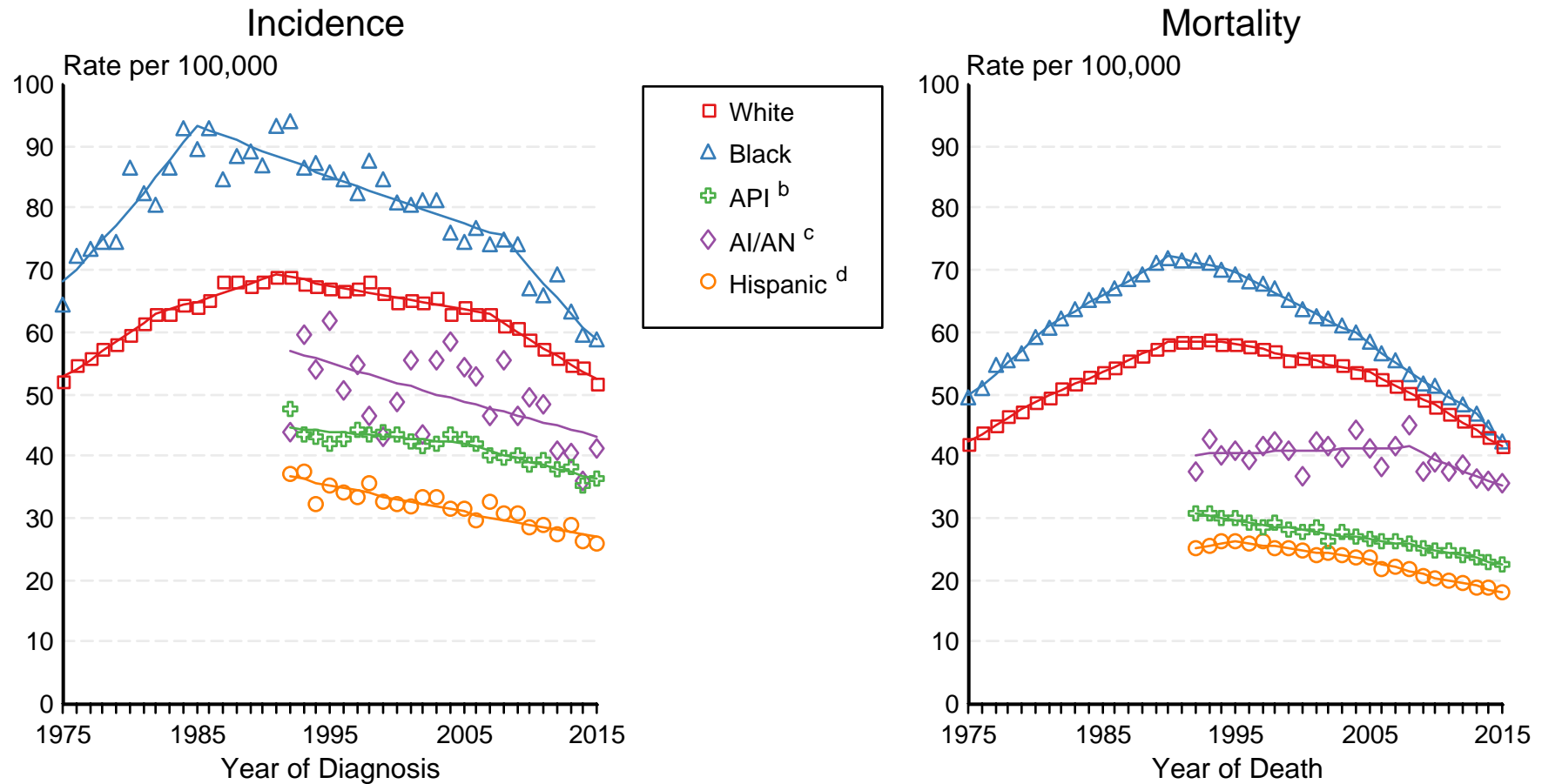
The APC is the Annual Percent Change for the regression line segments. The APC shown on the graph is for the most recent trend.

* The APC is significantly different from zero ($p < 0.05$).

Figure 15.4

SEER Incidence and US Death Rates^a Cancer of the Lung and Bronchus, Both Sexes

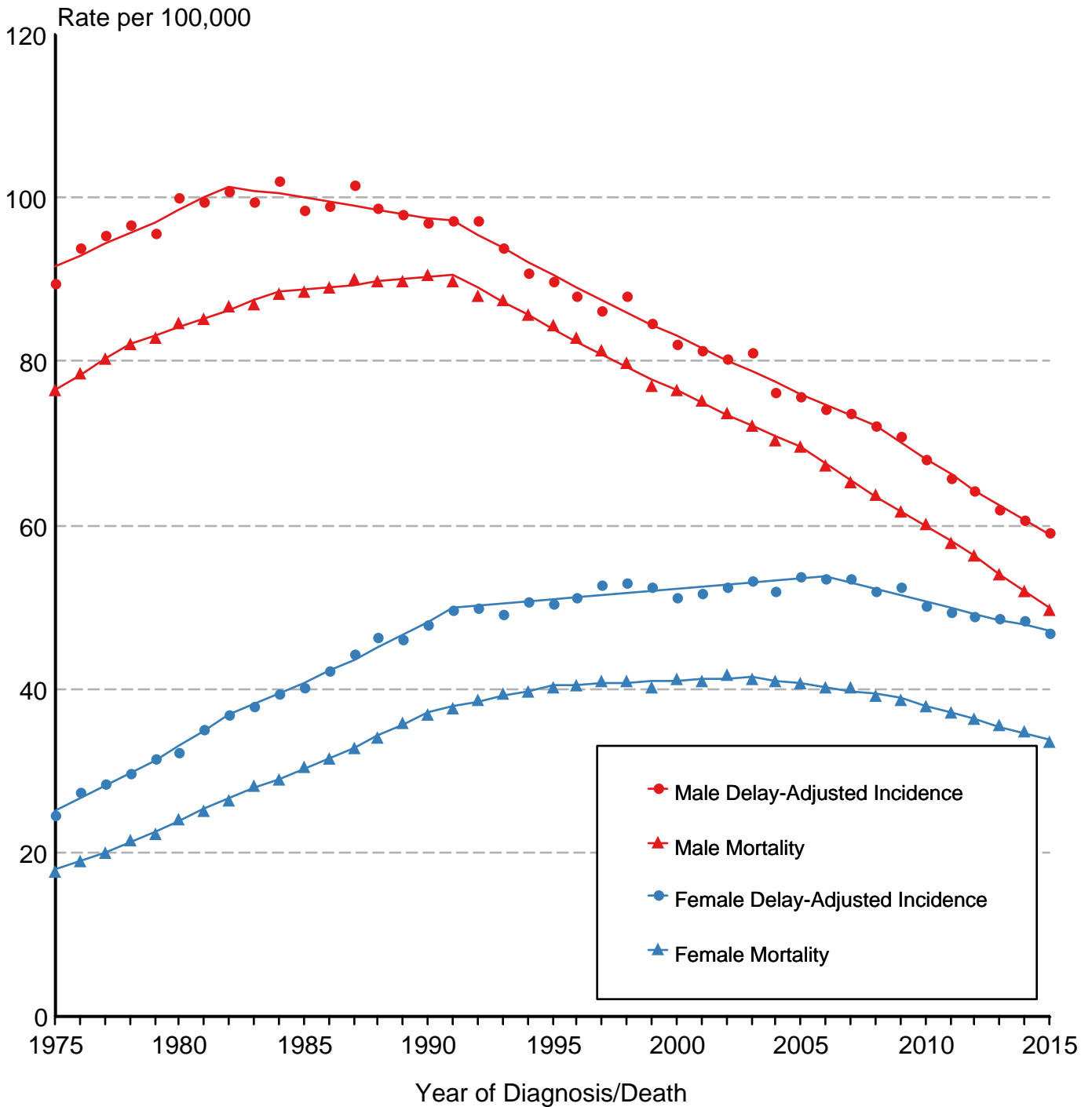
Joinpoint Analyses for Whites and Blacks from 1975-2015
and for Asian/Pacific Islanders, American Indians/Alaska Natives and Hispanics from 1992-2015



Source: Incidence data for whites and blacks are from the SEER 9 areas (San Francisco, Connecticut, Detroit, Hawaii, Iowa, New Mexico, Seattle, Utah, Atlanta). Incidence data for Asian/Pacific Islanders, American Indians/Alaska Natives and Hispanics are from the SEER 13 Areas (SEER 9 Areas, San Jose-Monterey, Los Angeles, Alaska Native Registry and Rural Georgia). Mortality data are from US Mortality Files, National Center for Health Statistics, CDC.

- ^a Rates are age-adjusted to the 2000 US Std Population (19 age groups - Census P25-1103). Regression lines are calculated using the Joinpoint Regression Program Version 4.6, February 2018, National Cancer Institute. Joinpoint analyses for Whites and Blacks during the 1975-2015 period allow a maximum of 5 joinpoints. Analyses for other ethnic groups during the period 1992-2015 allow a maximum of 4 joinpoints.
- ^b API = Asian/Pacific Islander.
- ^c AI/AN = American Indian/Alaska Native. Rates for American Indian/Alaska Native are based on the CHSDA(Contract Health Service Delivery Area) counties.
- ^d Hispanic is not mutually exclusive from whites, blacks, Asian/Pacific Islanders, and American Indians/Alaska Natives. Incidence data for Hispanics are based on NHIA and exclude cases from the Alaska Native Registry. Mortality data for Hispanics exclude cases from New Hampshire and Oklahoma.

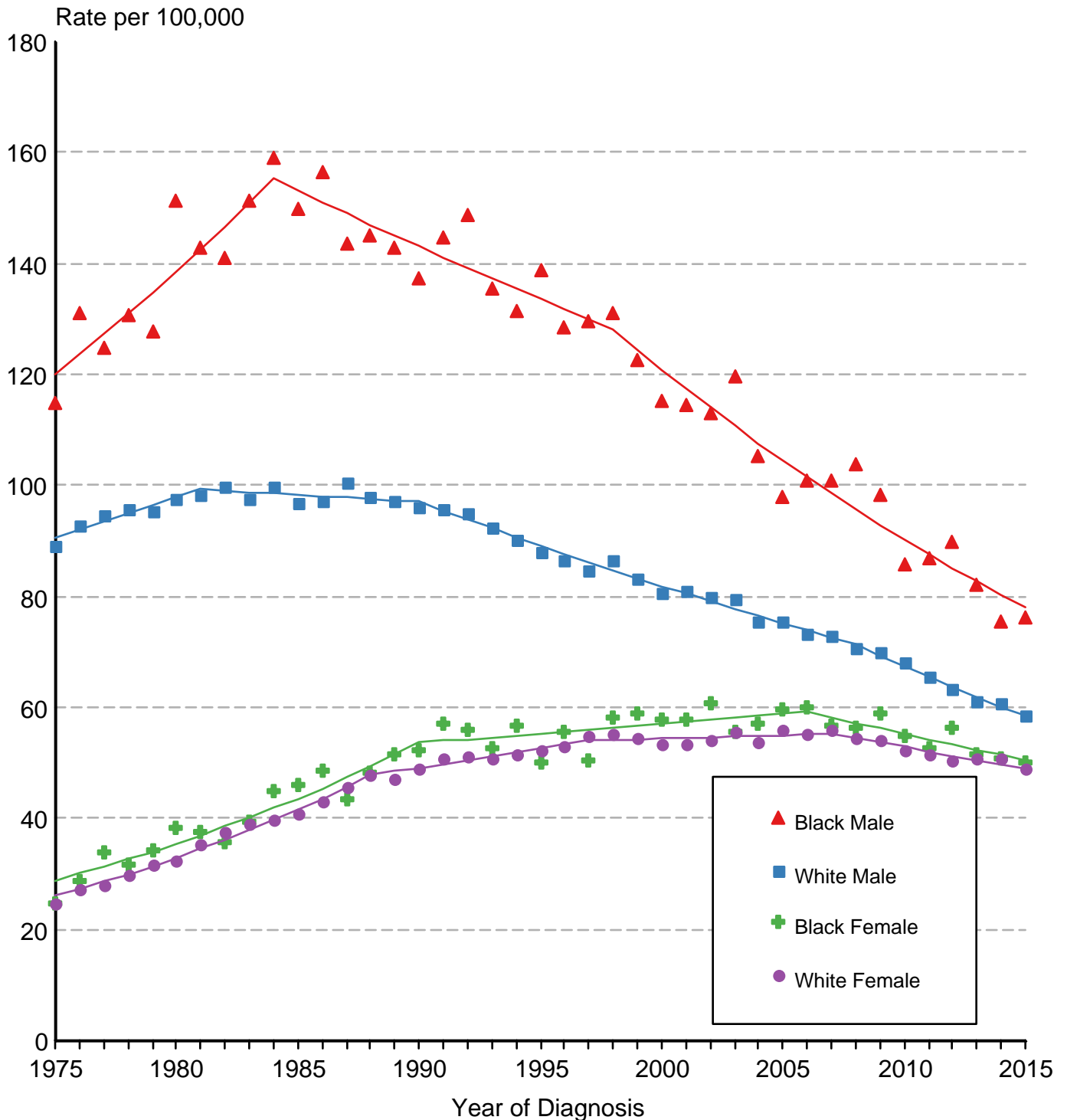
Cancer of the Lung & Bronchus SEER Delay-Adjusted Incidence & US Death Rates, 1975-2015, All Races, By Sex



Source: SEER 9 areas and US Mortality Files (National Center for Health Statistics, CDC). Rates are age-adjusted to the 2000 US Std Population (19 age groups - Census P25-1103). Regression lines are calculated using the Joinpoint Regression Program Version 4.6, February 2018, National Cancer Institute.

Figure 15.6

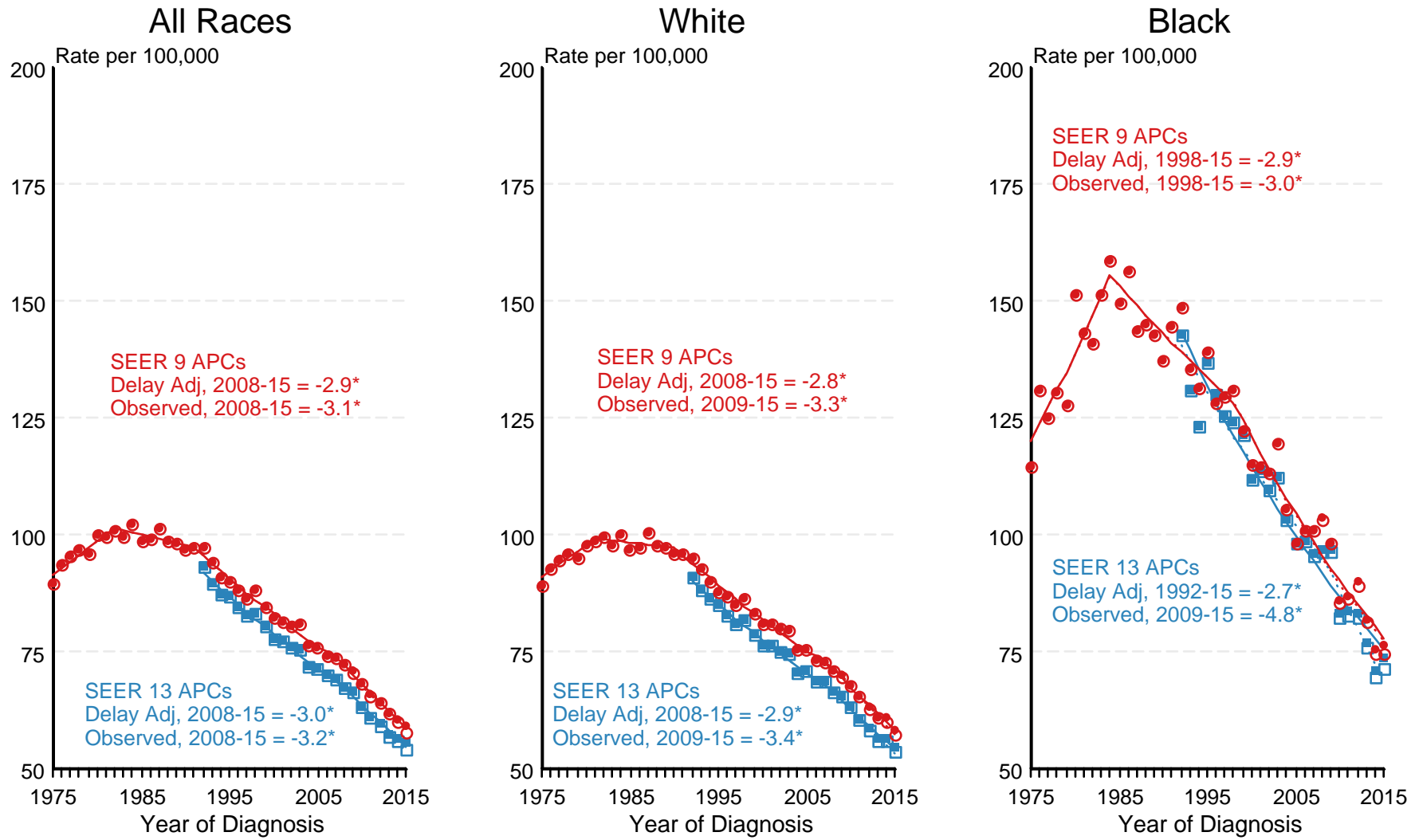
Cancer of the Lung & Bronchus SEER Delay-Adjusted Incidence, 1975-2015 By Sex and Race



Source: SEER 9 areas. Rates are age-adjusted to the 2000 US Std Population (19 age groups - Census P25-1103). Regression lines are calculated using the Joinpoint Regression Program Version 4.6, February 2018, National Cancer Institute.

Figure 15.7

SEER Observed Incidence and SEER Delay Adjusted Incidence Rates^a SEER 9 Areas Compared to SEER 13 Areas Cancer of the Lung and Bronchus, Male, by Race

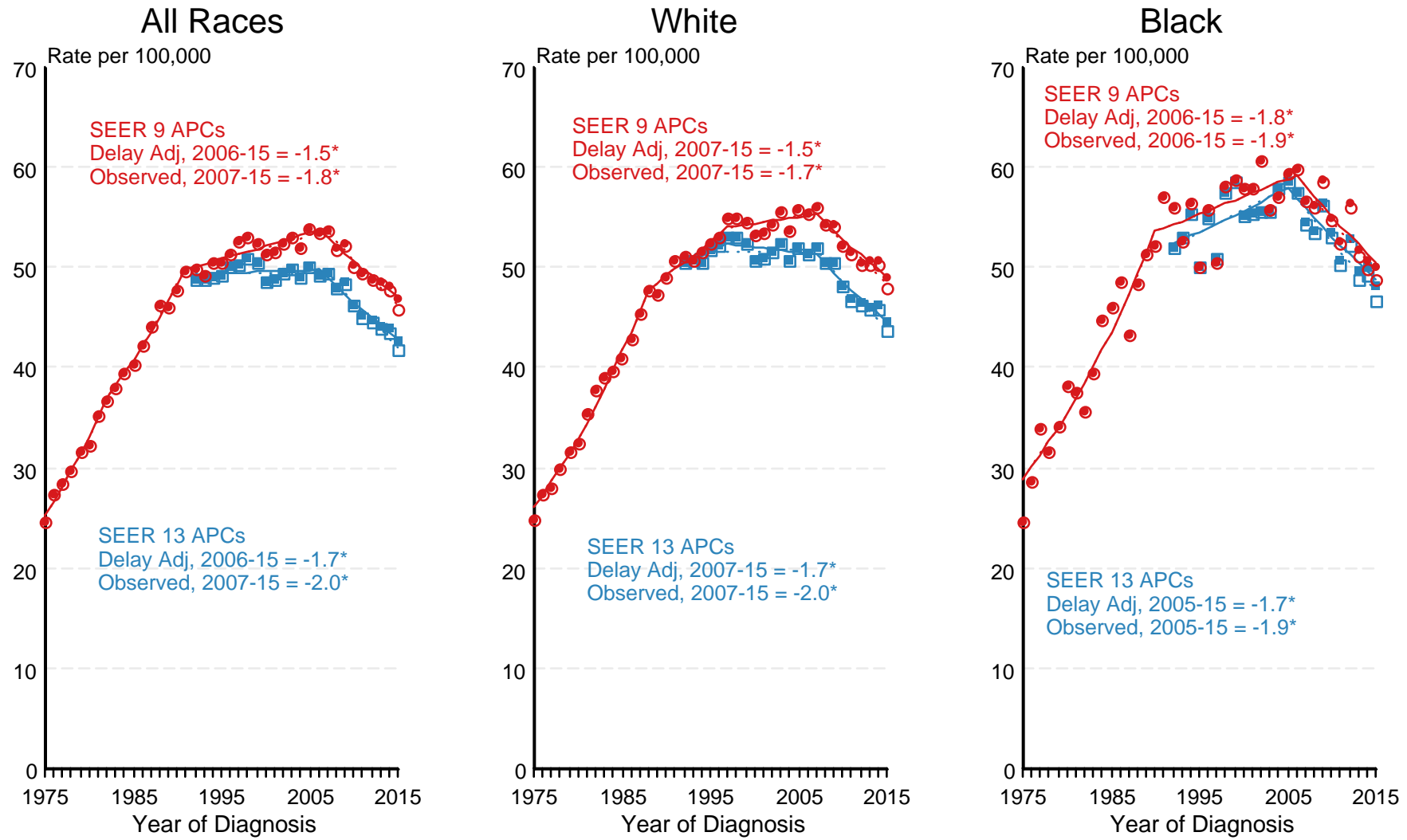


● SEER 9 Delay-Adj. Incidence
 ○ SEER 9 Observed Incidence
 ■ SEER 13 Delay-Adj. Incidence
 □ SEER 13 Observed Incidence

Source: SEER 9 areas and SEER 13 areas.
^a Rates are age-adjusted to the 2000 US Std Population (19 age groups - Census P25-1103).
 Regression lines and APCs are calculated using the Joinpoint Regression Program Version 4.6, February 2018, National Cancer Institute.
 The APC is the Annual Percent Change for the regression line segments. The APC shown on the graph is for the most recent trend.
 * The APC is significantly different from zero ($p < 0.05$).

Figure 15.8

SEER Observed Incidence and SEER Delay Adjusted Incidence Rates^a SEER 9 Areas Compared to SEER 13 Areas Cancer of the Lung and Bronchus, Female, by Race



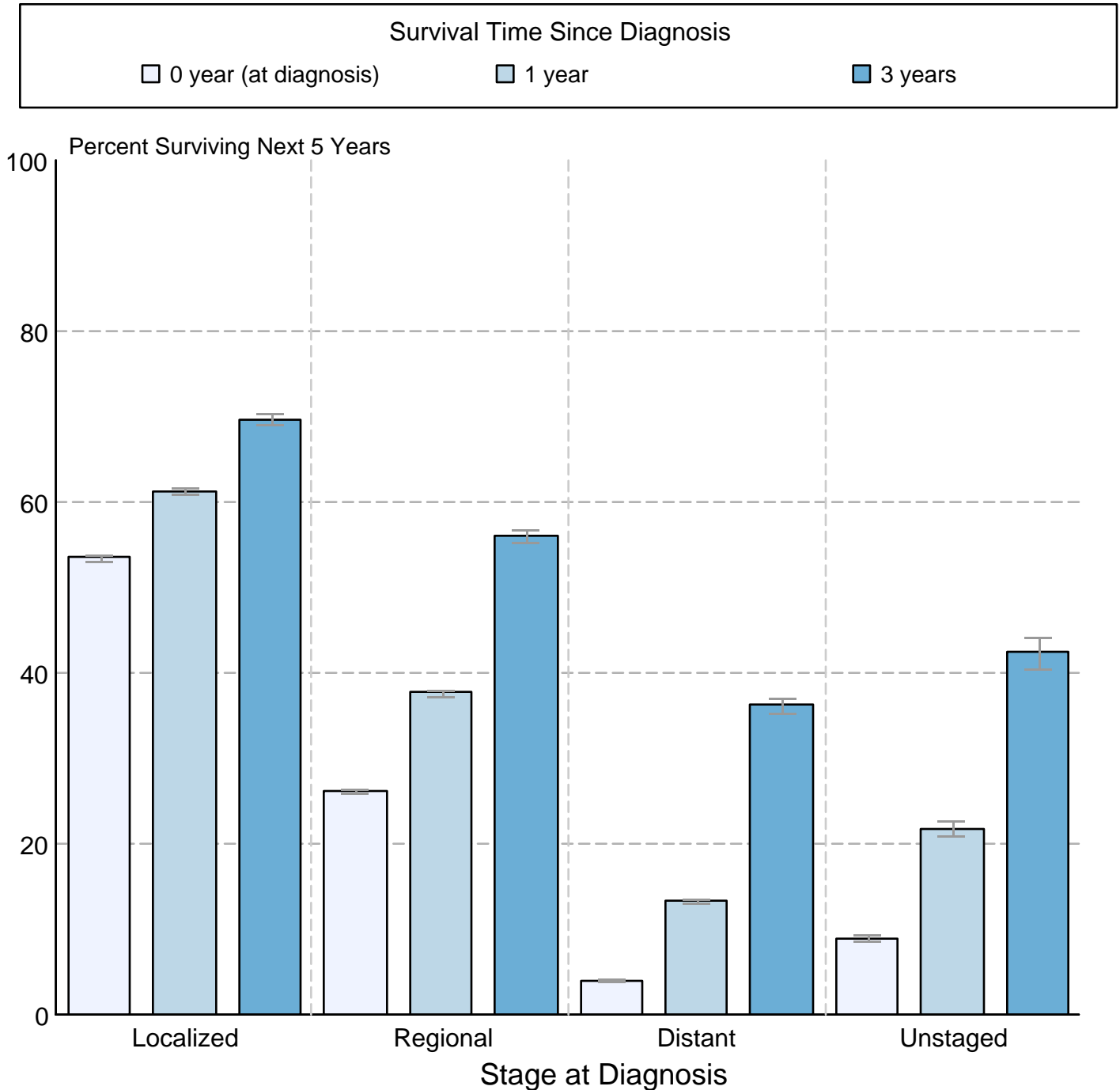
● SEER 9 Delay-Adj. Incidence ○ SEER 9 Observed Incidence ■ SEER 13 Delay-Adj. Incidence □ SEER 13 Observed Incidence

Source: SEER 9 areas and SEER 13 areas.
^a Rates are age-adjusted to the 2000 US Std Population (19 age groups - Census P25-1103).
 Regression lines and APCs are calculated using the Joinpoint Regression Program Version 4.6, February 2018, National Cancer Institute.
 The APC is the Annual Percent Change for the regression line segments. The APC shown on the graph is for the most recent trend.
 * The APC is significantly different from zero (p < 0.05).

Figure 15.9

Cancer of the Lung and Bronchus 5-Year SEER Conditional Relative Survival and 95% Confidence Intervals

Probability of surviving the next 5 years given the cohort
has already survived 0, 1, or 3 years
1998-2014 by stage at diagnosis



Source: SEER 18 areas (San Francisco, Connecticut, Detroit, Hawaii, Iowa, New Mexico, Seattle, Utah, Atlanta, San Jose-Monterey, Los Angeles, Alaska Native Registry, Rural Georgia, California excluding SF/SJM/LA, Kentucky, Louisiana, New Jersey and Georgia excluding ATL/RG). California excluding SF/SJM/LA, Kentucky, Louisiana, New Jersey and Georgia excluding ATL/RG contribute cases for diagnosis years 2000 and later. The remaining 13 SEER Areas contribute cases for the entire time period. Percent surviving is not shown if based on less than 25 cases. Confidence intervals are not shown if length of the confidence interval is greater than 5 times the standard error.