

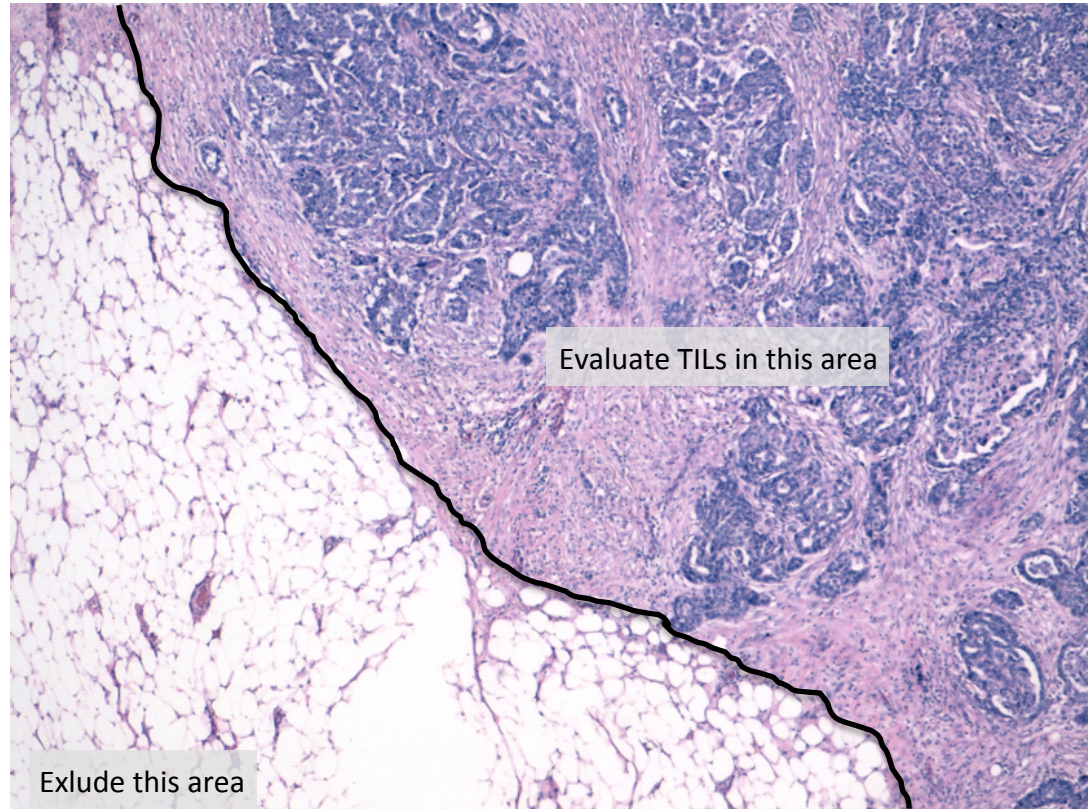
Evaluation of Tumor Infiltrating Lymphocytes (TILs) in High-grade Serous Ovarian Carcinoma

Guidelines for TILs assessment from the “International
Immuno-Oncology Biomarker Working Group”

Authors: Giancarlo Pruneri and Andrea Vingaini
European Institute of Oncology and University of Milan, Italy.

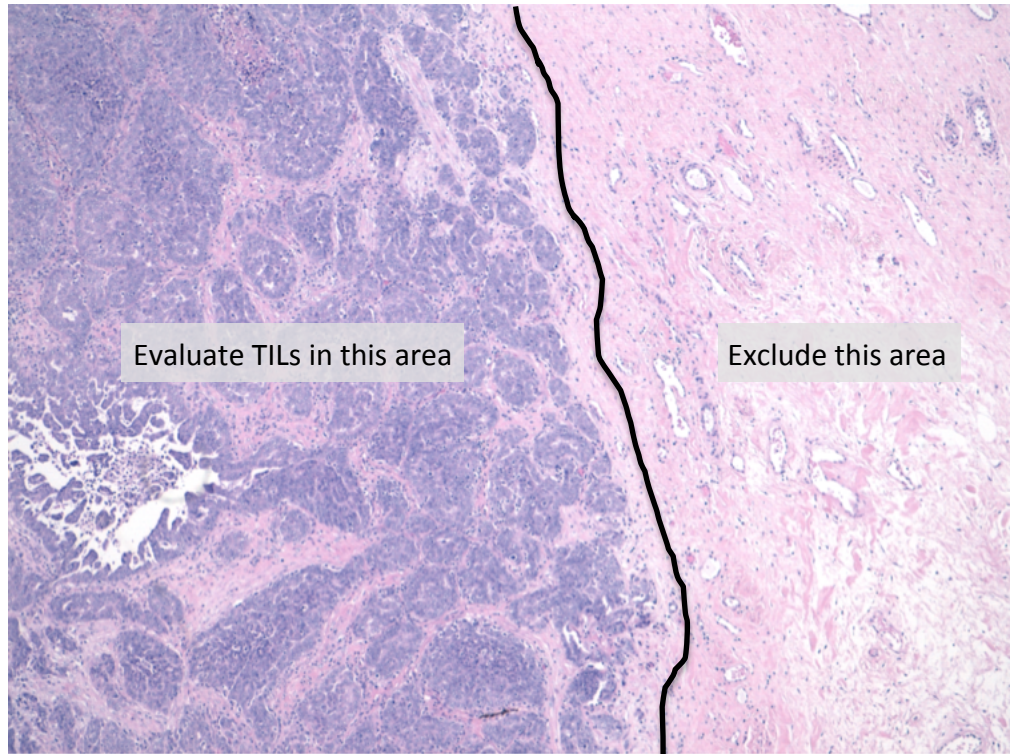
Define area for TILs evaluation

- TILs within the borders of the invasive tumors are evaluated
- The invasive edge is included in the evaluation, but not reported separately
- Immune infiltrates outside of the tumor borders are not included



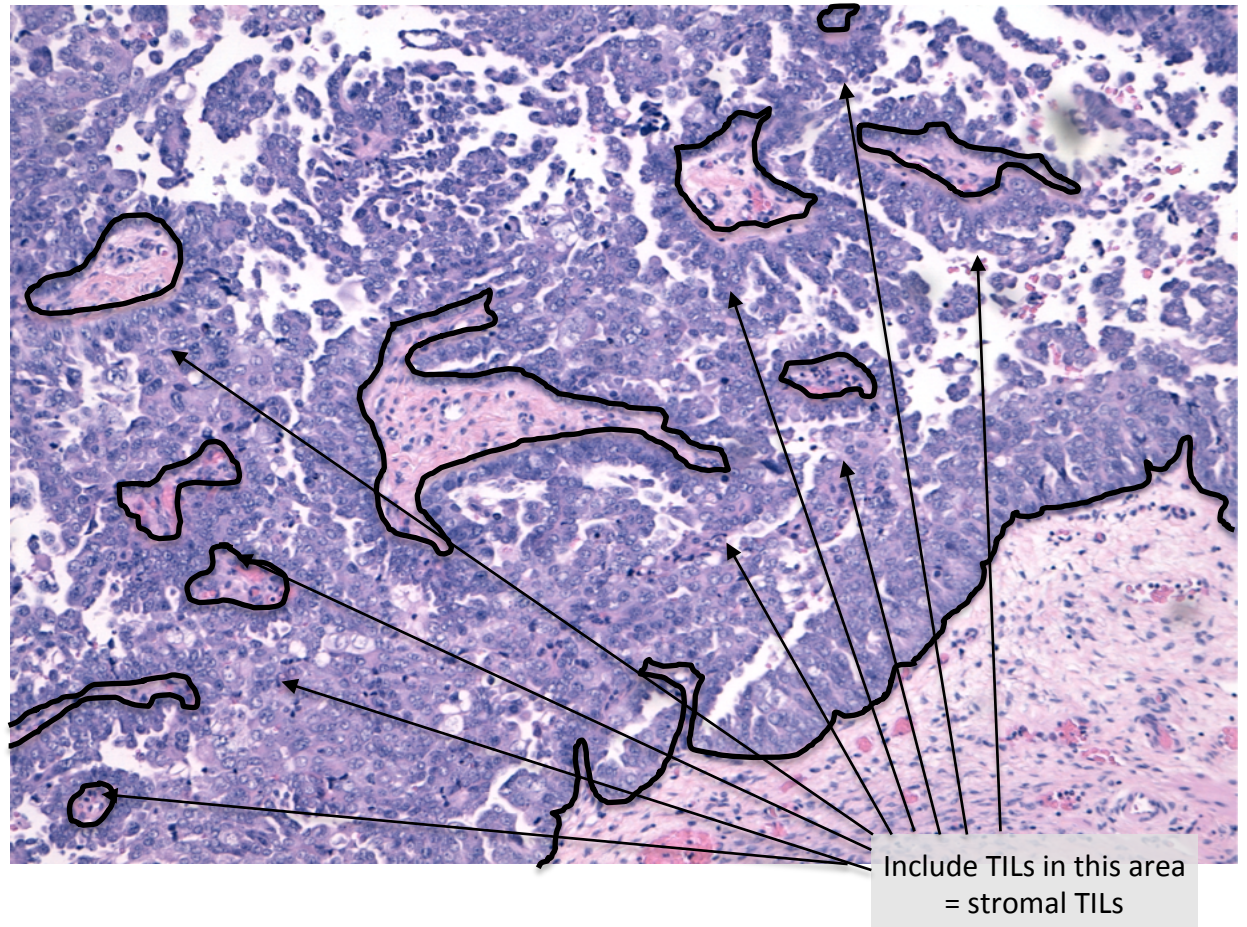
Define area for TILs evaluation

- TILs within the borders of the invasive tumors are evaluated
- The invasive edge is included in the evaluation
- Immune infiltrates outside of the tumor borders are not included



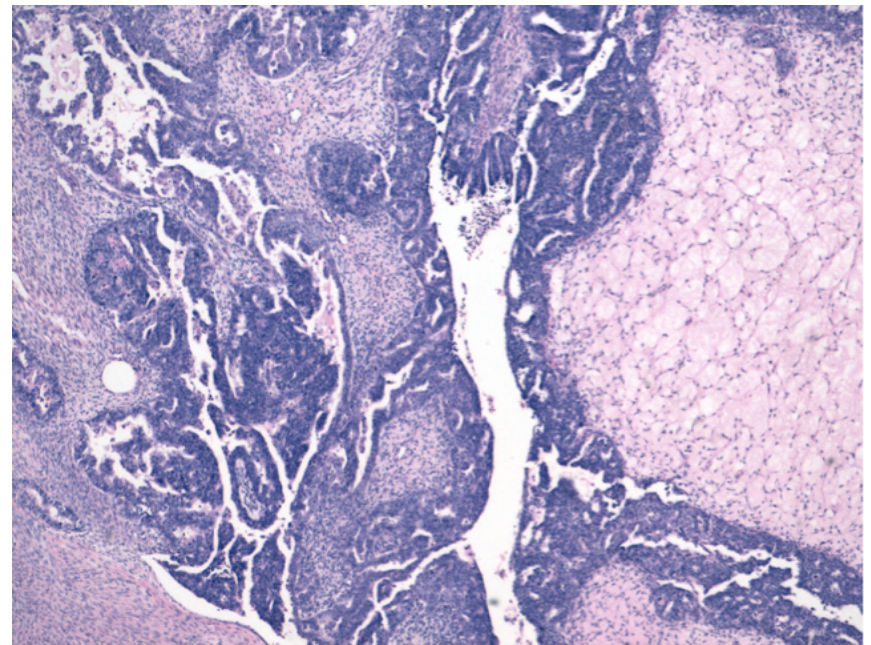
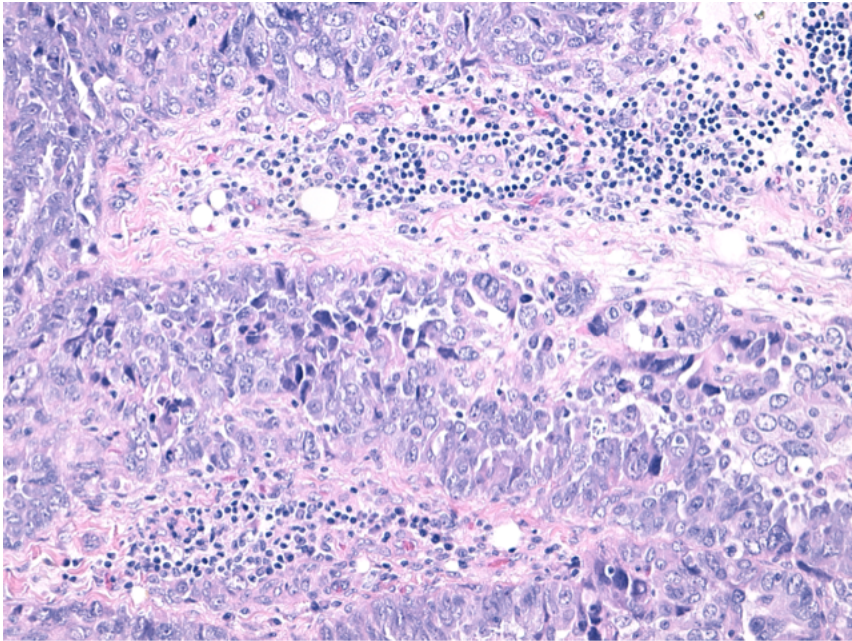
Define area for TILs evaluation

Include TILs evaluation in stroma pertaining to fibro-vascular cores of papillary structures



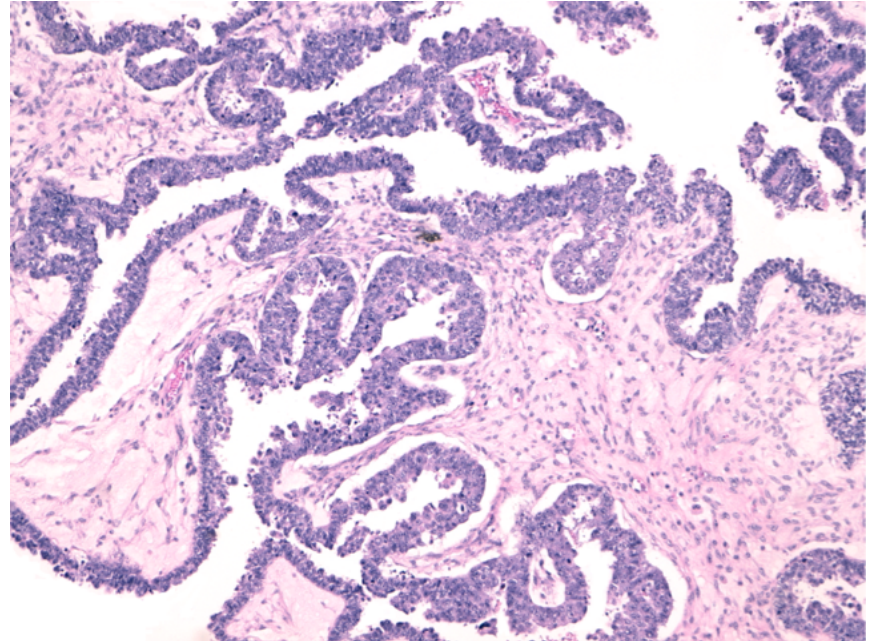
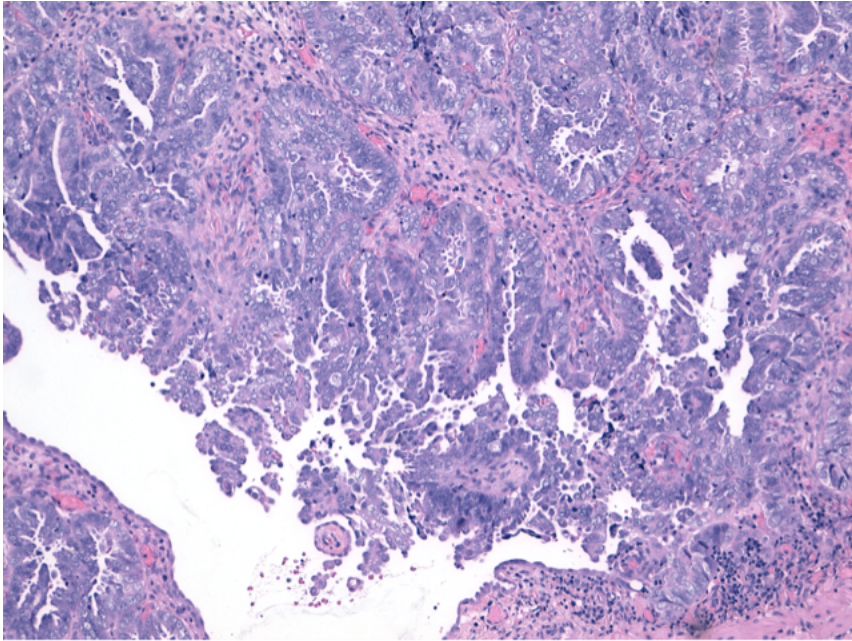
Define area for TILs evaluation

Include TILs evaluation in stroma pertaining to fibro-vascular cores of papillary structures



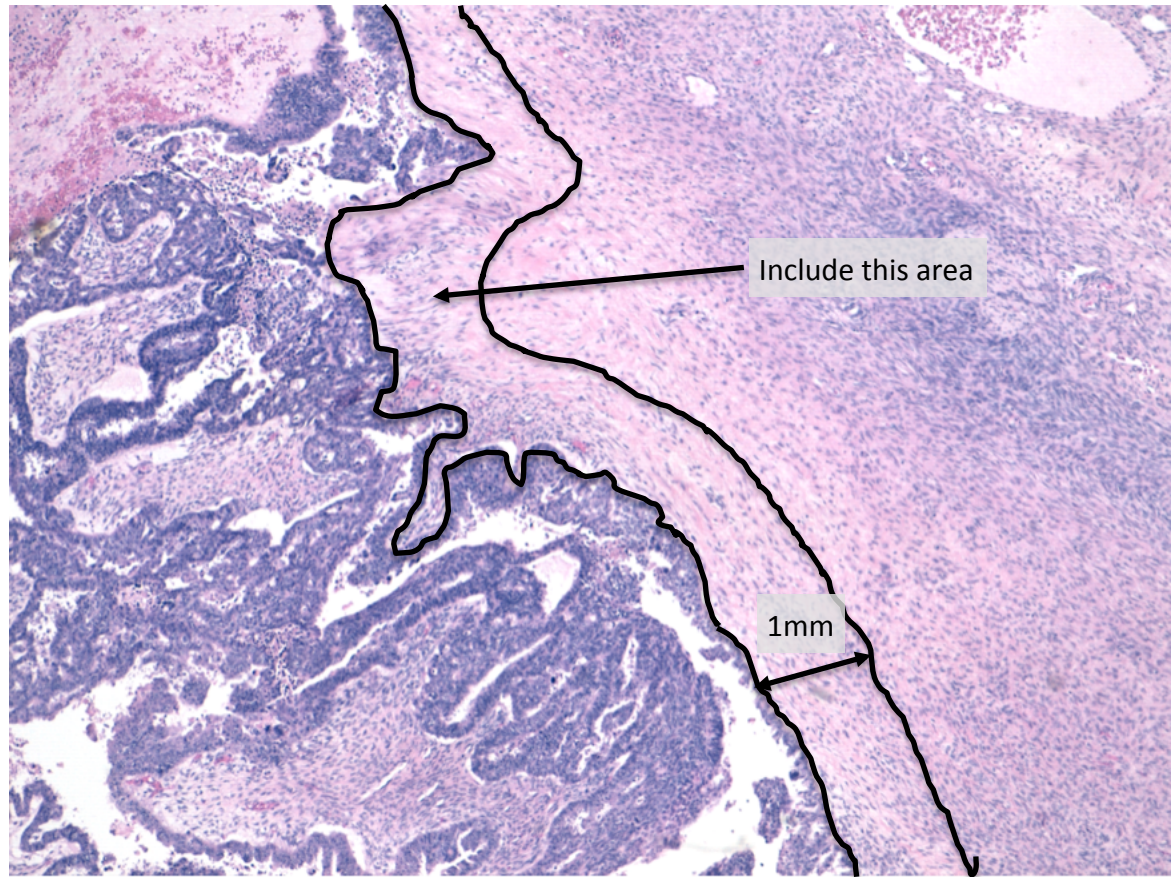
Define area for TILs evaluation

Include TILs evaluation in stroma pertaining to fibro-vascular cores of papillary structures



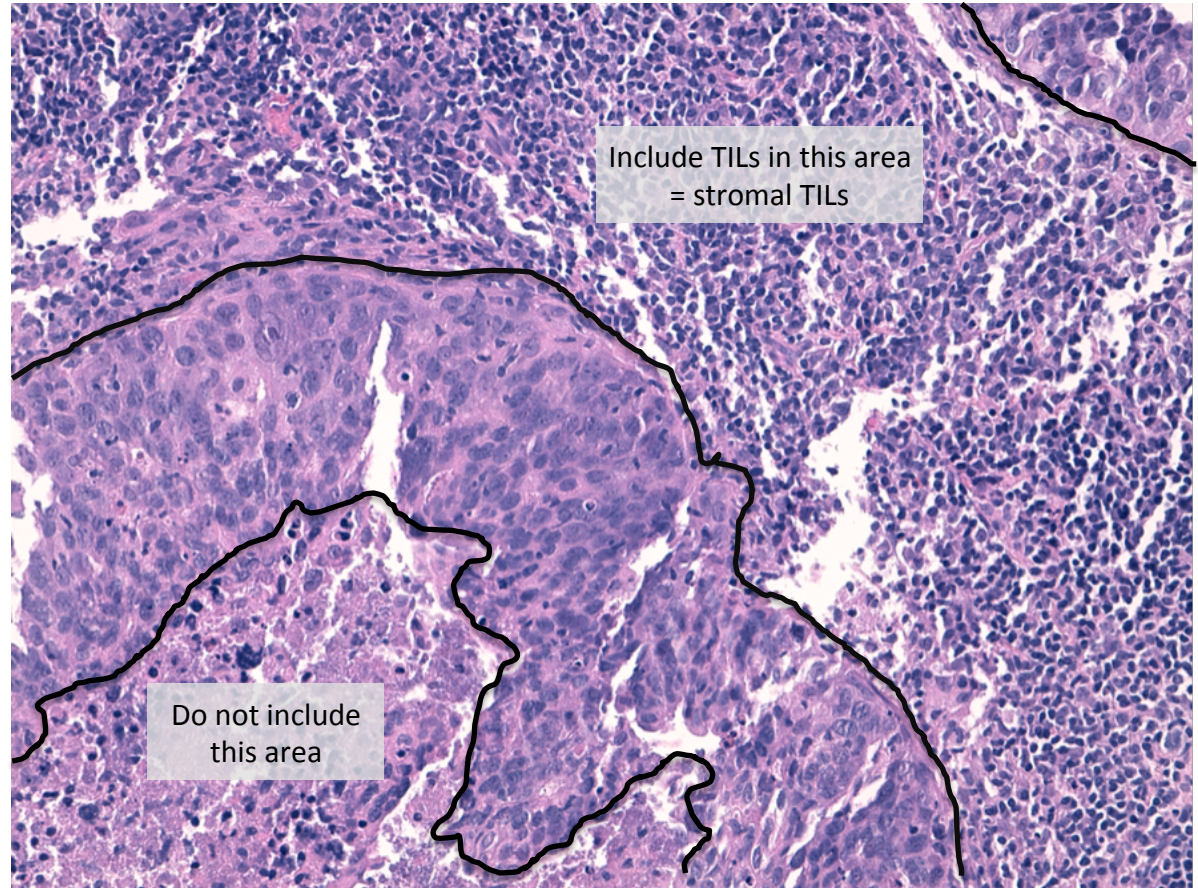
Define area for TILs evaluation

In case of ovarian or peritoneal superficial tumor localizations, evaluate TILs in connective tissue just beneath the epithelial layer within 1mm.

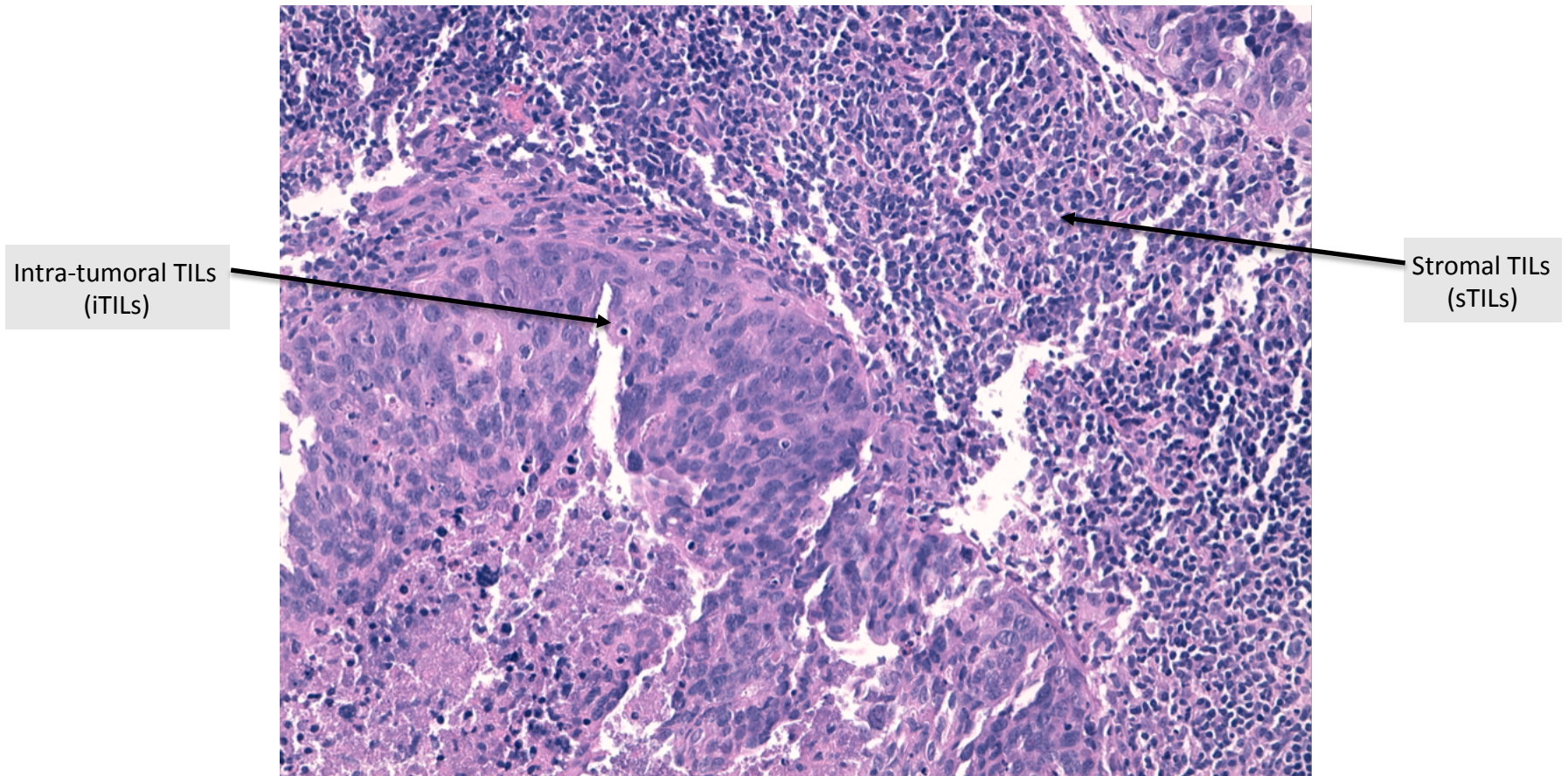


Define area for TILs evaluation

Areas of necrosis or fibrosis are not included in the evaluation



Determine the localization of inflammatory infiltrate



Determine type of inflammatory infiltrate

Include only mononuclear infiltrate
(lymphocytes & plasma cells)

Do not include granulocytic infiltrate
in areas of tumor necrosis

