

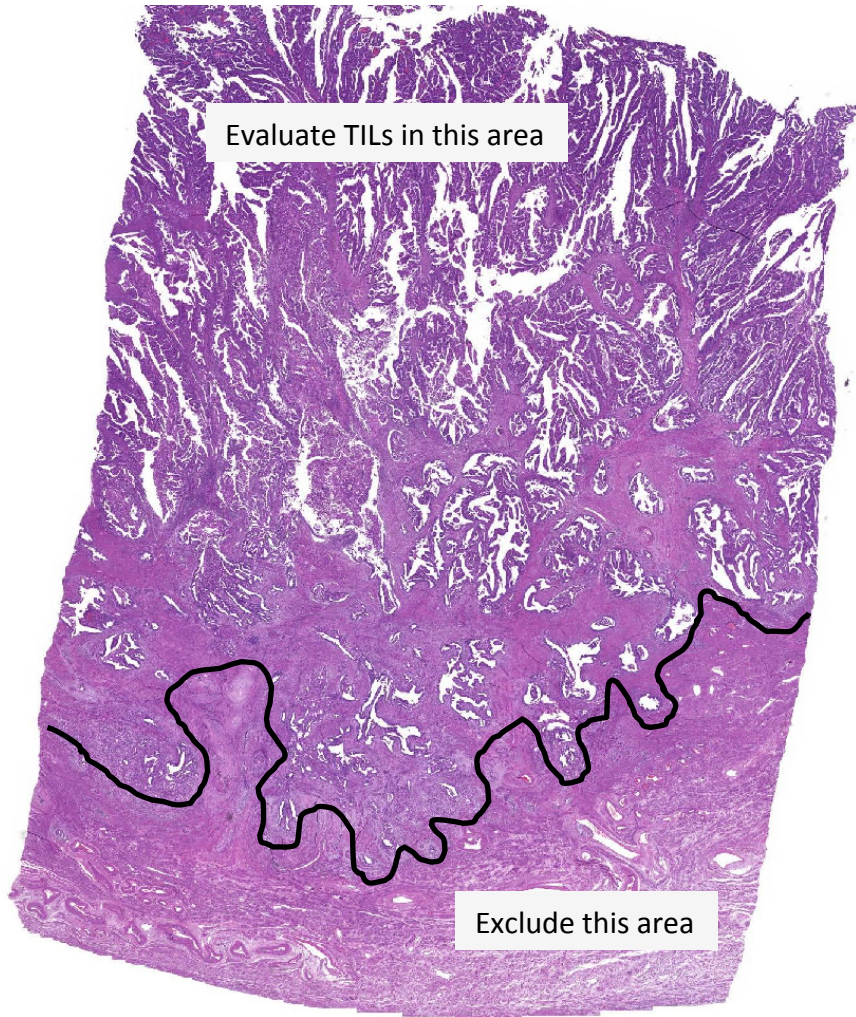
Evaluation of Tumor Infiltrating Lymphocytes (TILs) in Endometrial Carcinoma

Guidelines for TILs assessment from the “International
Immuno-Oncology Biomarker Working Group”

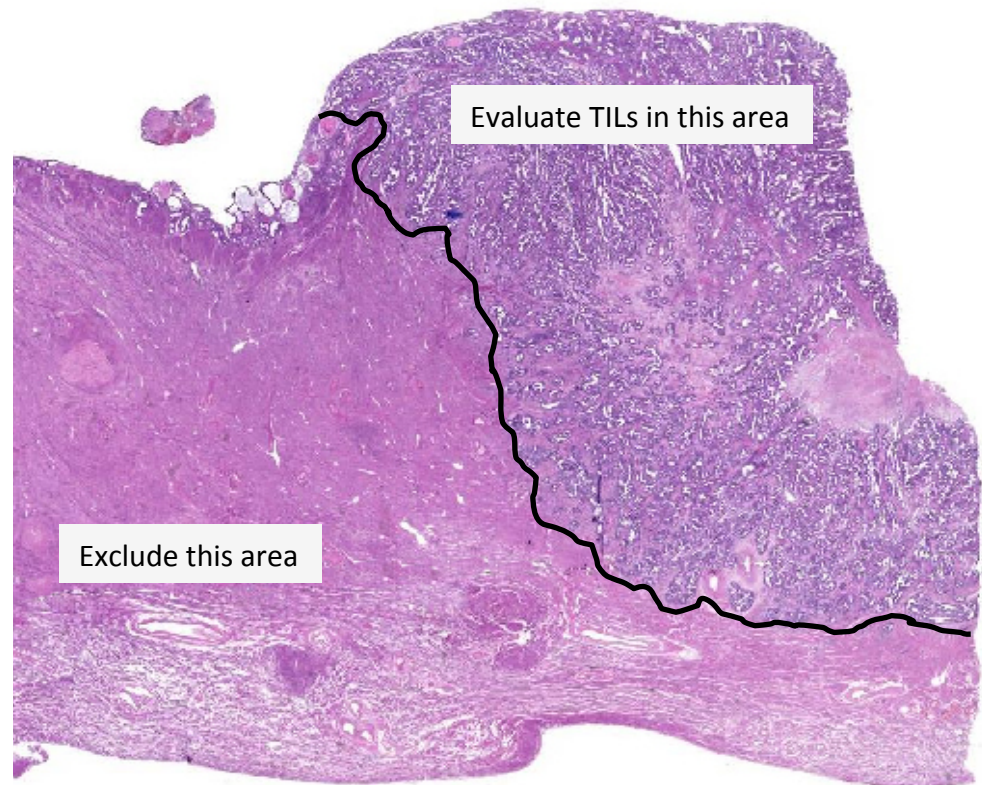
Author: Koen van de Vijver¹

1-Netherlands Cancer Institute

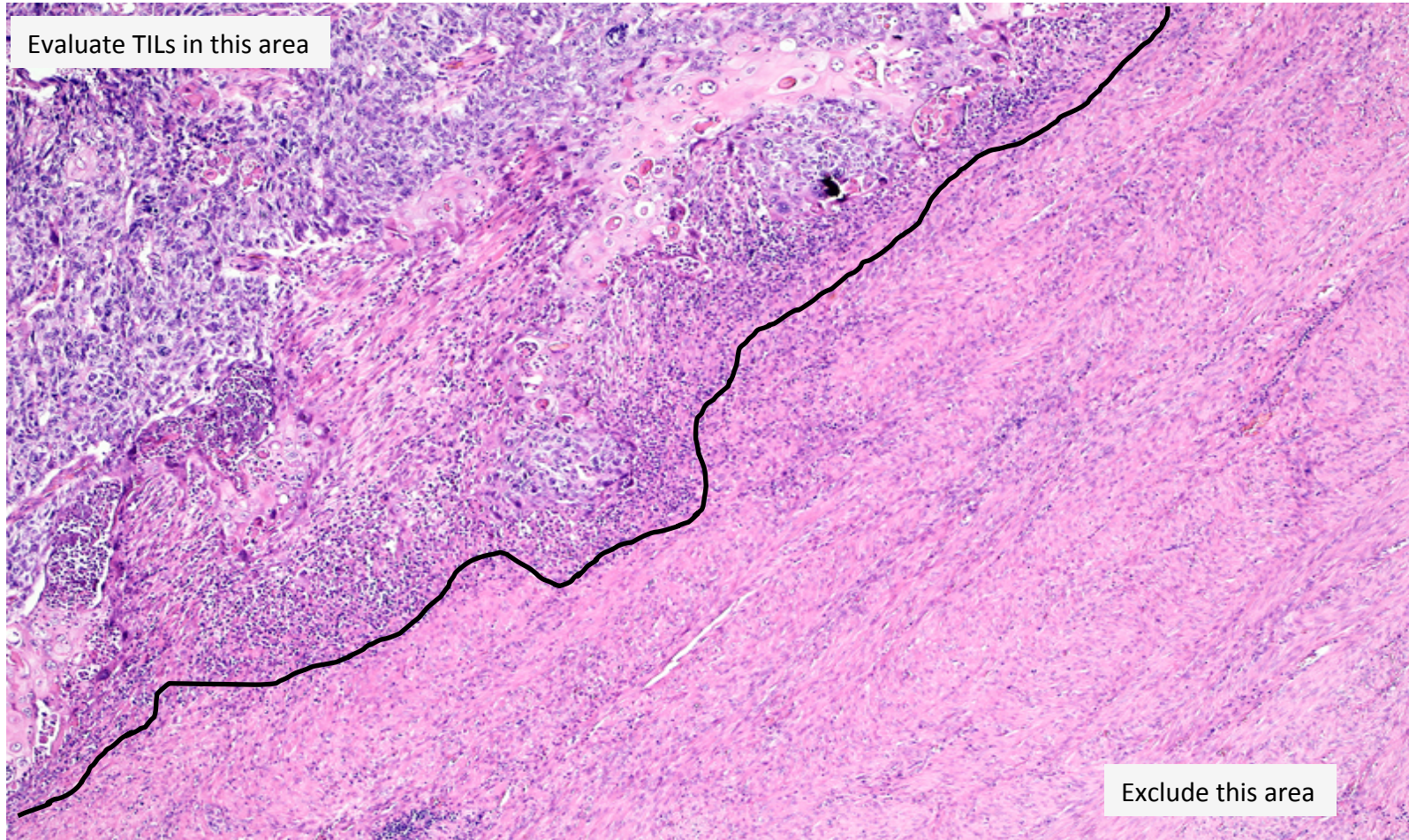
Define area for TILs evaluation



Evaluate TILs within the borders of the tumor, both in the central tumor and at the invasive margin.



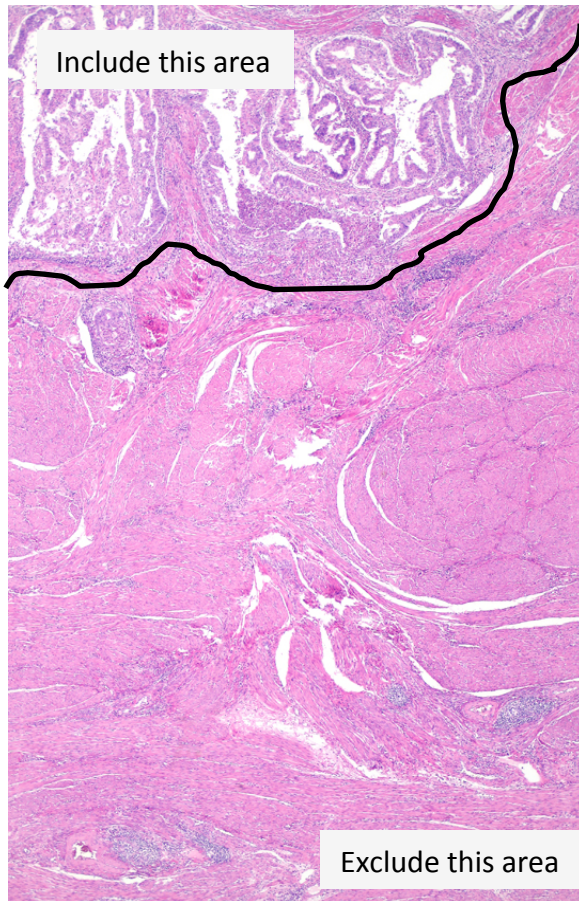
Define area for TILs evaluation



Define area for TILs evaluation

Patterns of myo-invasion: evaluate TILs in the connective tissue just beneath the epithelial layer within 1mm (invasive margin)

Broad front pattern



Adenomyotic pattern

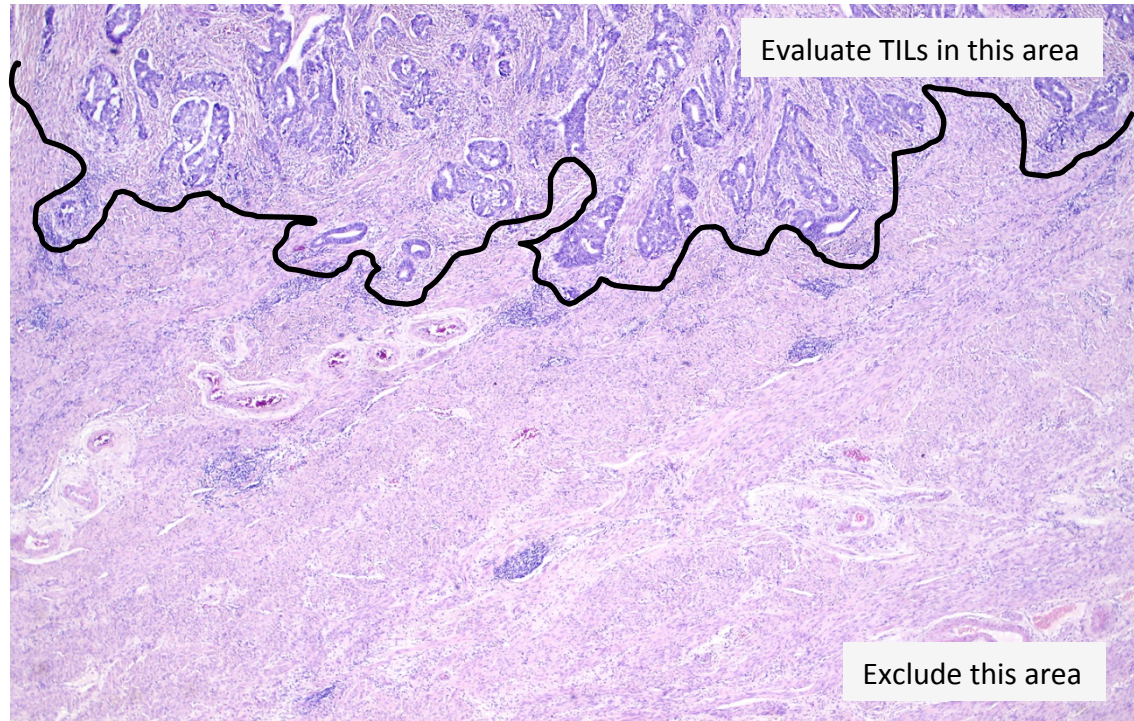


Widely separated single-glands



Define area for TILs evaluation

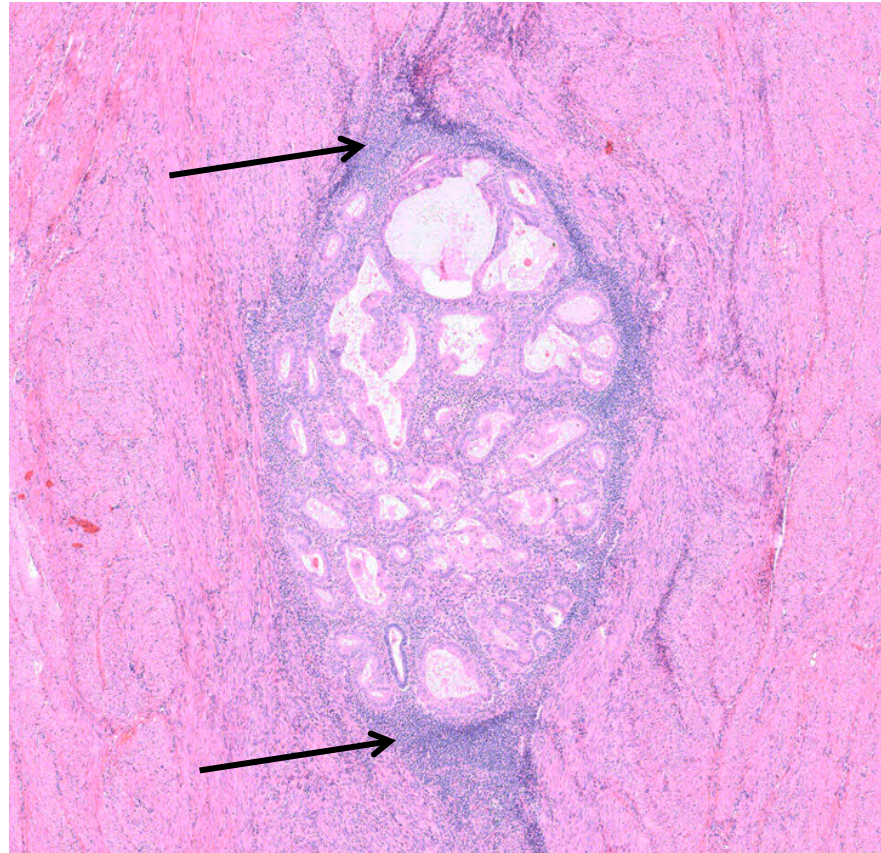
Immune infiltrates outside of the tumor borders are not included.



Do not include perivascular immune infiltrates, often present around lymphovascular space invasion (LVSI).

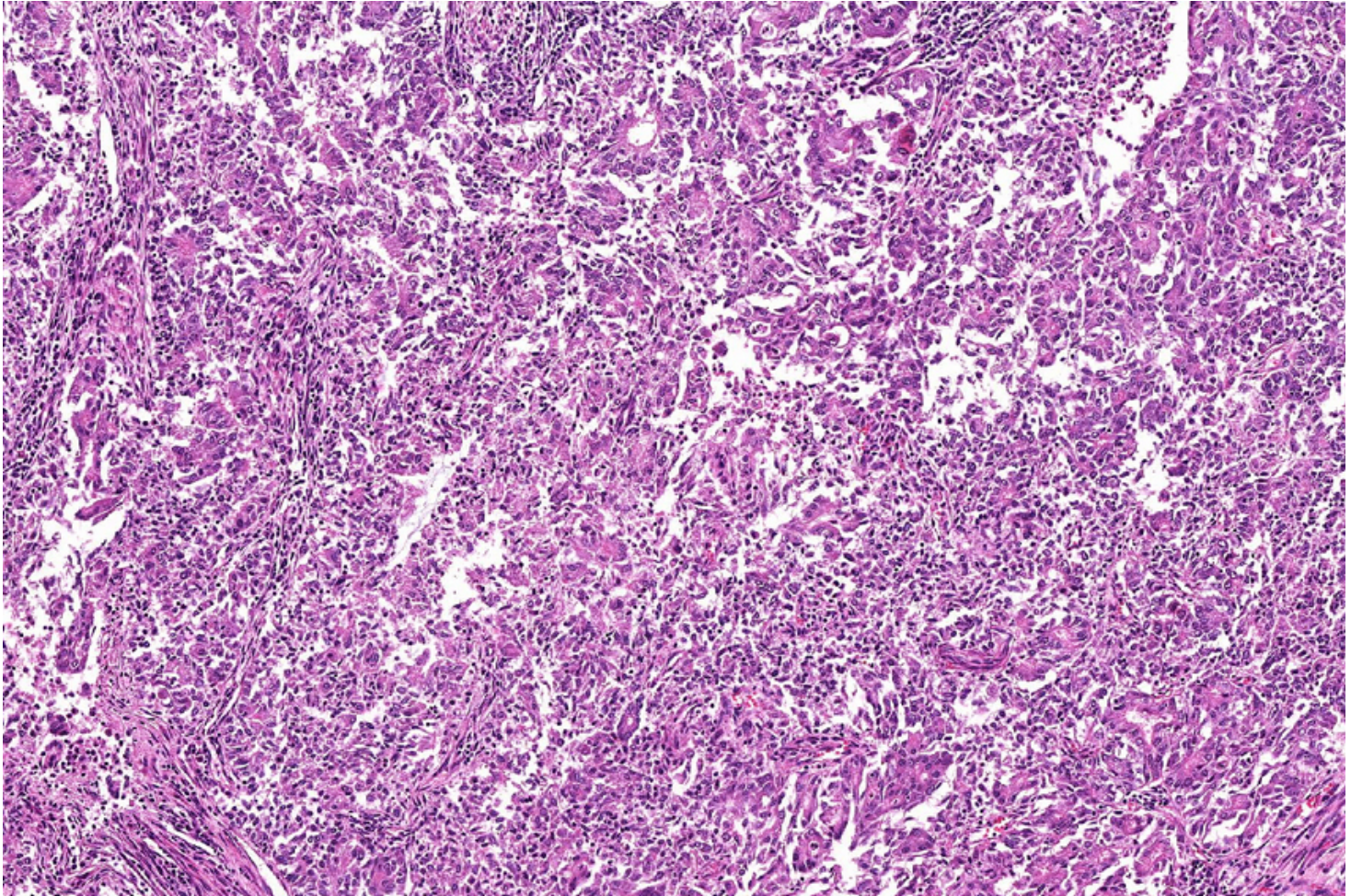
Define area for TILs evaluation

Be aware of tumor present in adenomyosis: small endometrial stromal cells may mimic immune cells



Define area for TILs evaluation

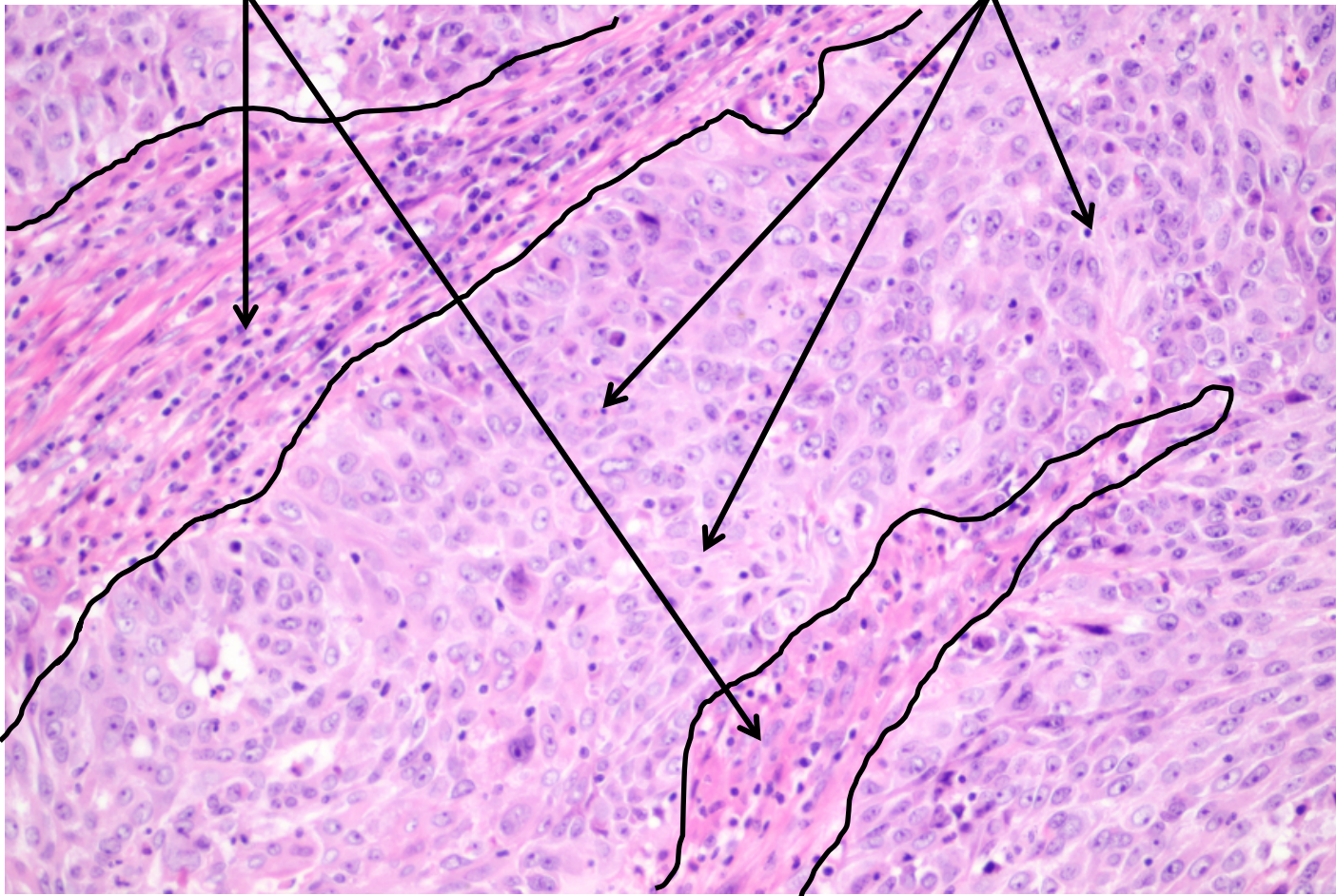
Do not use areas with poor fixation



Determine the localization of the TILs

Stromal TILs

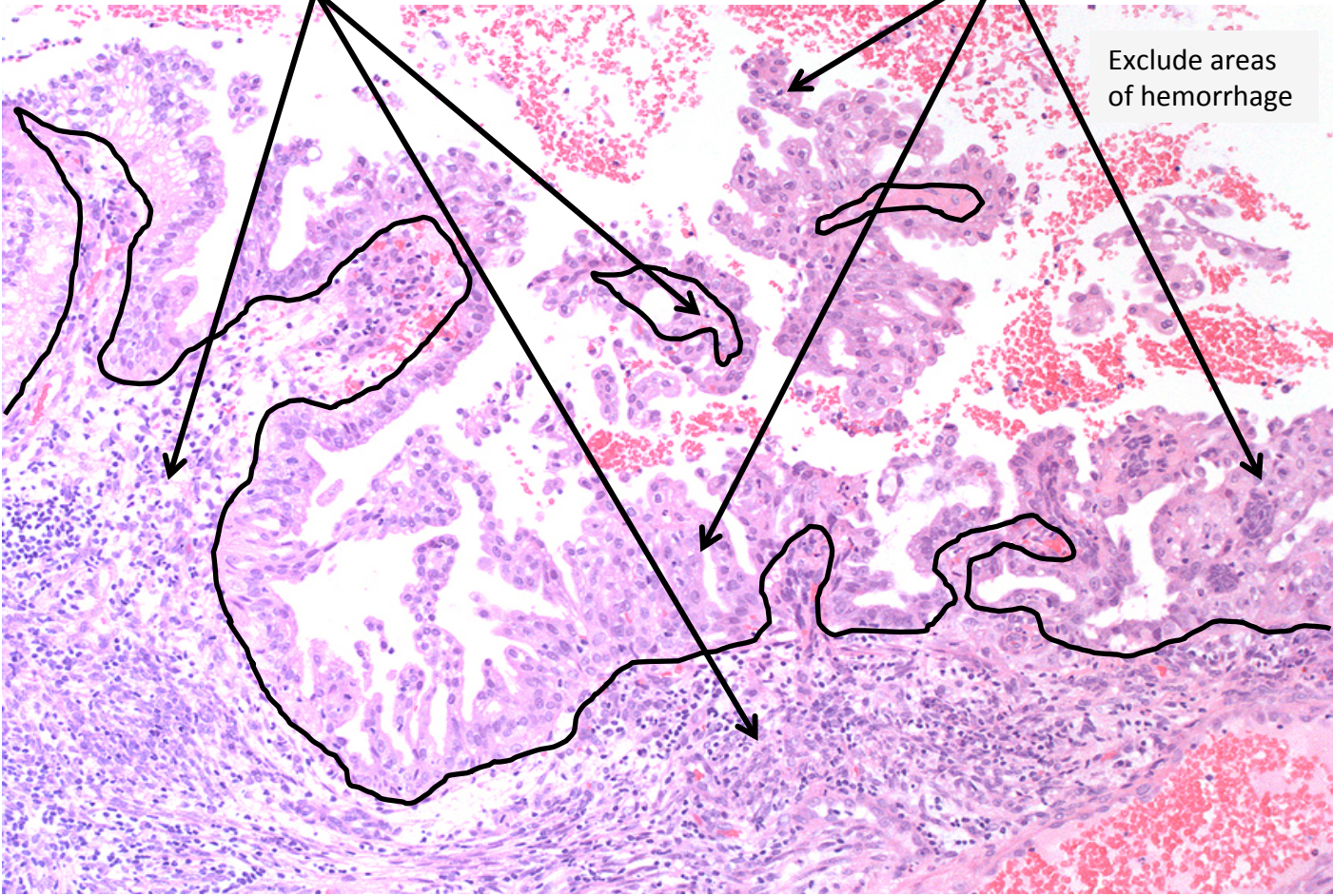
Intratatumoral TILs



Determine the localization of the TILs

Stromal TILs
(include fibrovascular cores of papillary structures)

Intratatumoral TILs

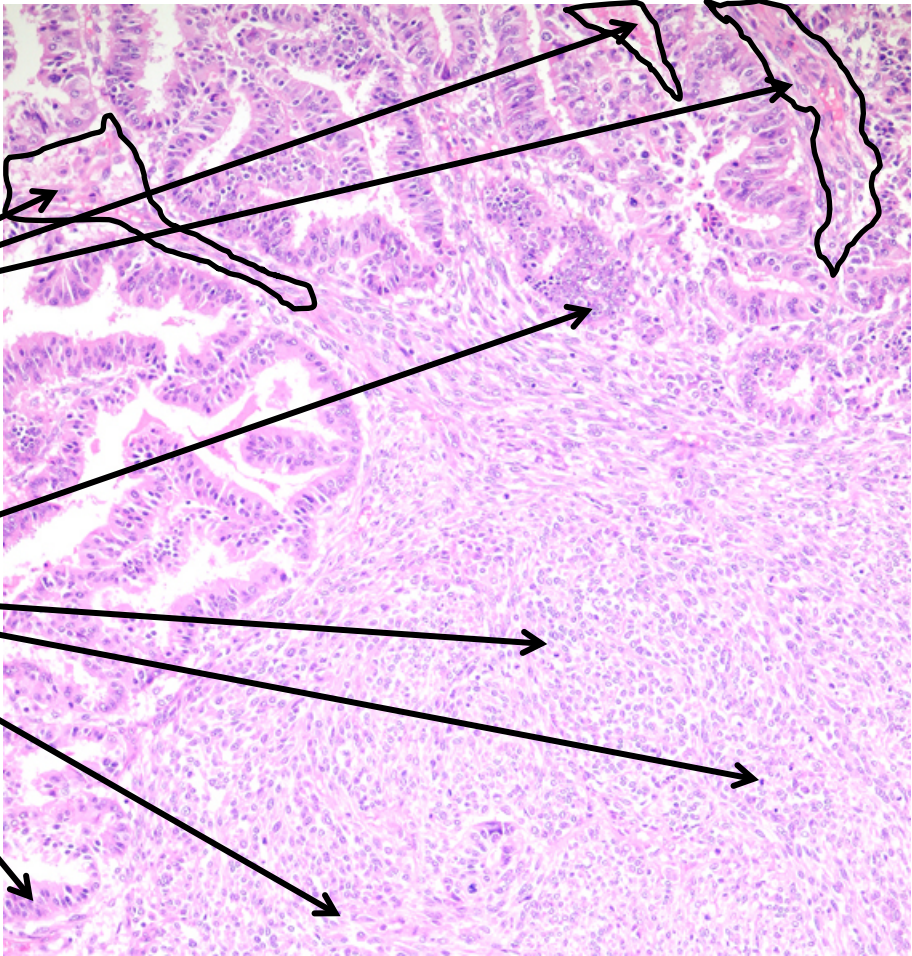


Determine the localization of the TILs

Be aware of endometrial carcinomas with a spindled, sarcomatoid or solid growth

Stromal TILs

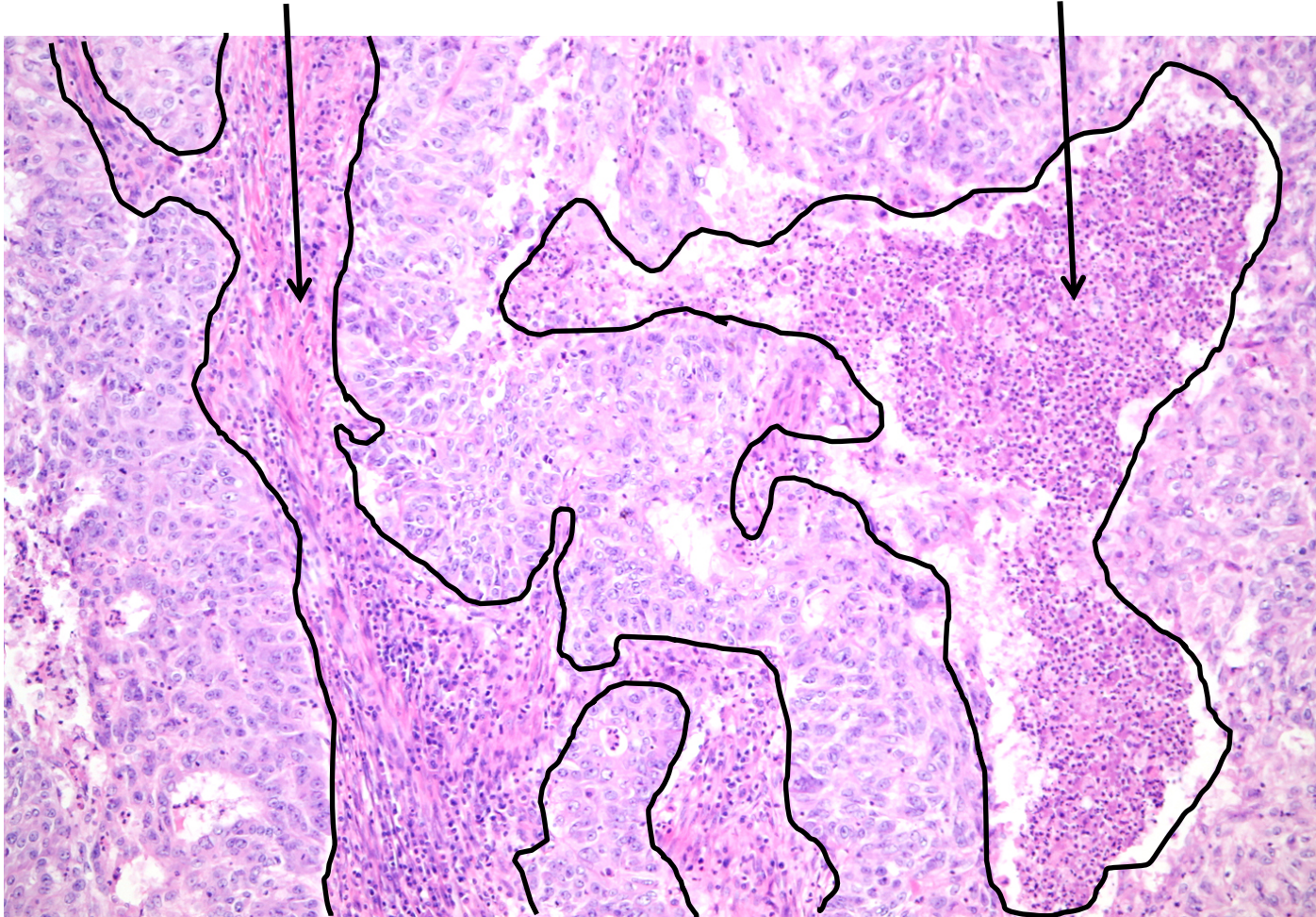
Intratatumoral TILs
(spindled growth
of the tumor)



Determine type of inflammatory infiltrate

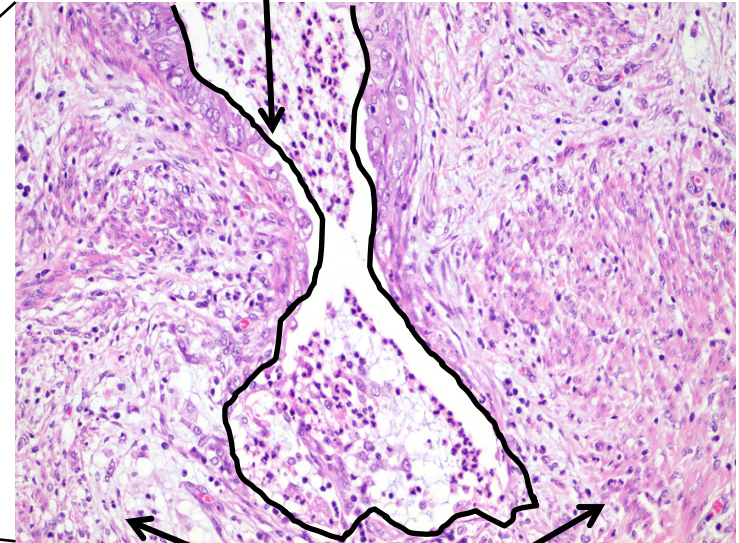
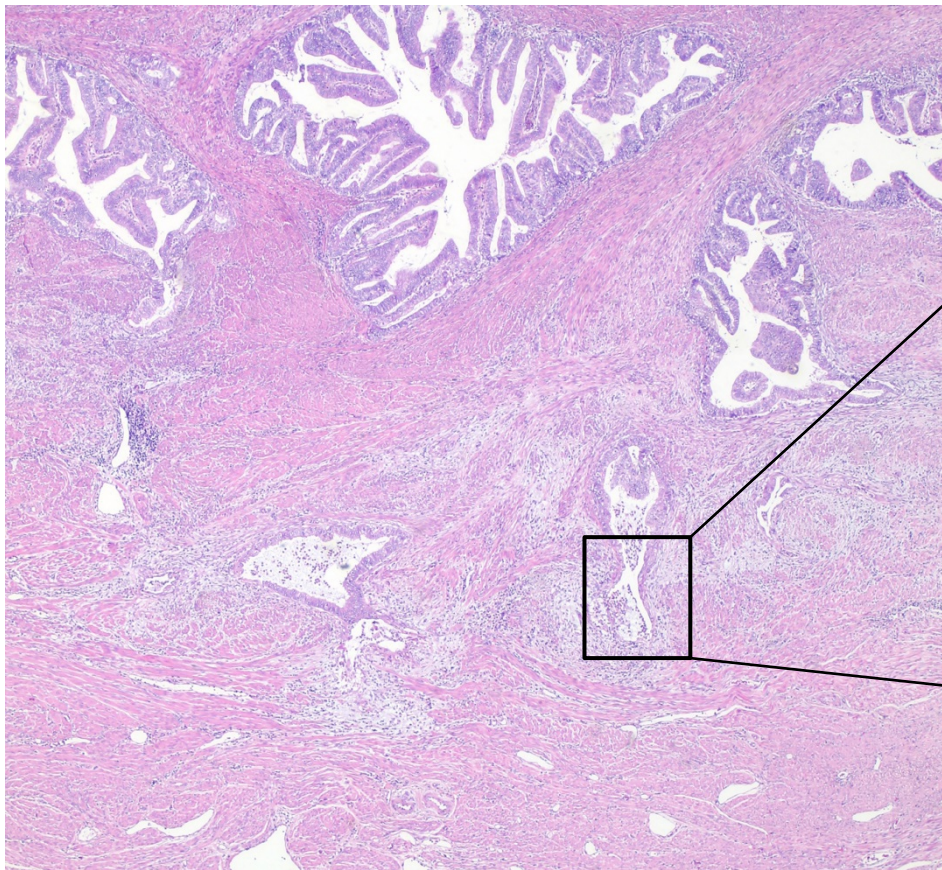
Include only mononuclear infiltrate
(lymphocytes & plasma cells)

Exclude areas of necrosis
for evaluation of TILs



Determine type of inflammatory infiltrate

Score only mononuclear infiltrate: a MELF pattern of invasion is often accompanied by a neutrophilic infiltrate: exclude this area



Evaluate TILs in this area

(MELF = microcystic, elongated and fragmented)