

Evaluation of Tumor Infiltrating Lymphocytes (TILs) in Lung Adenocarcinoma

Guidelines for TILs assessment from “International
Immuno-Oncology Biomarker Working Group”

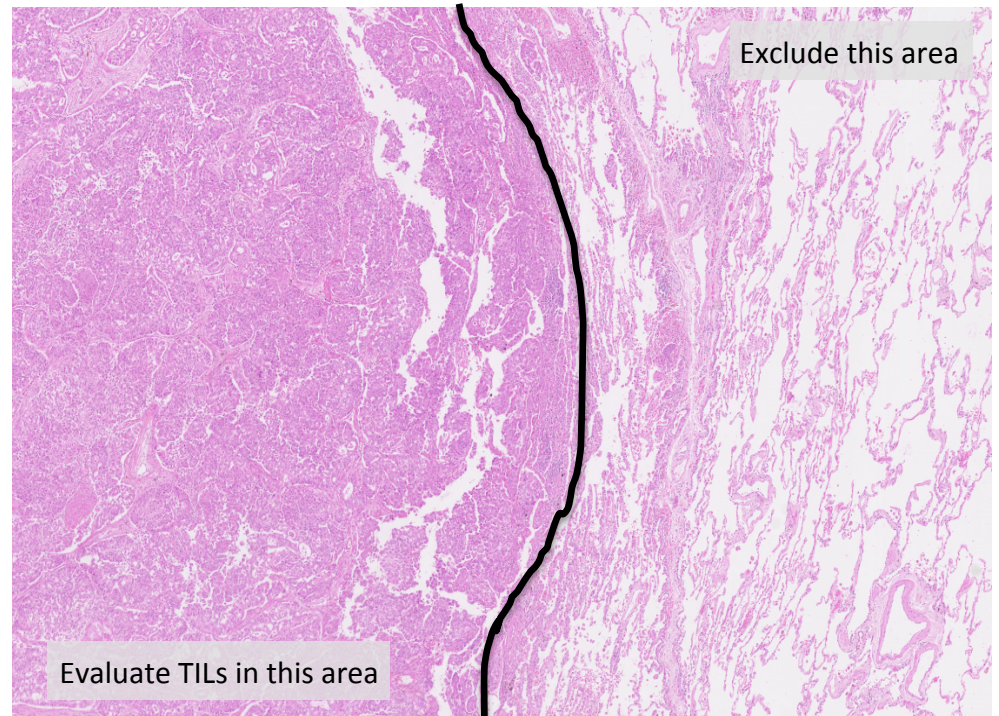
Author: Gert van den Eynden¹

¹-GZA Hospitals and CORE Antwerp University, Antwerp, Belgium.

Define area for TILs evaluation

TILs within the borders of the invasive tumors are evaluated

The invasive edge is included in the evaluation, but not reported separately

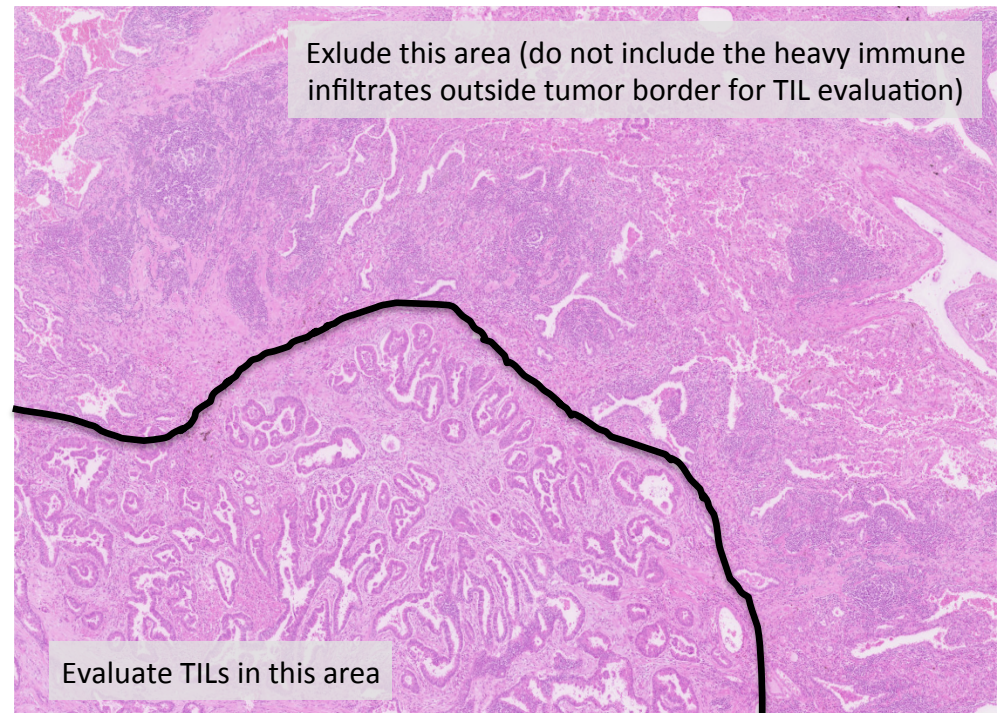


Define area for TILs evaluation

TILs within the borders of the invasive tumors are evaluated

The invasive edge is included in the evaluation, but not reported separately

Immune infiltrates outside of the tumor borders are not included



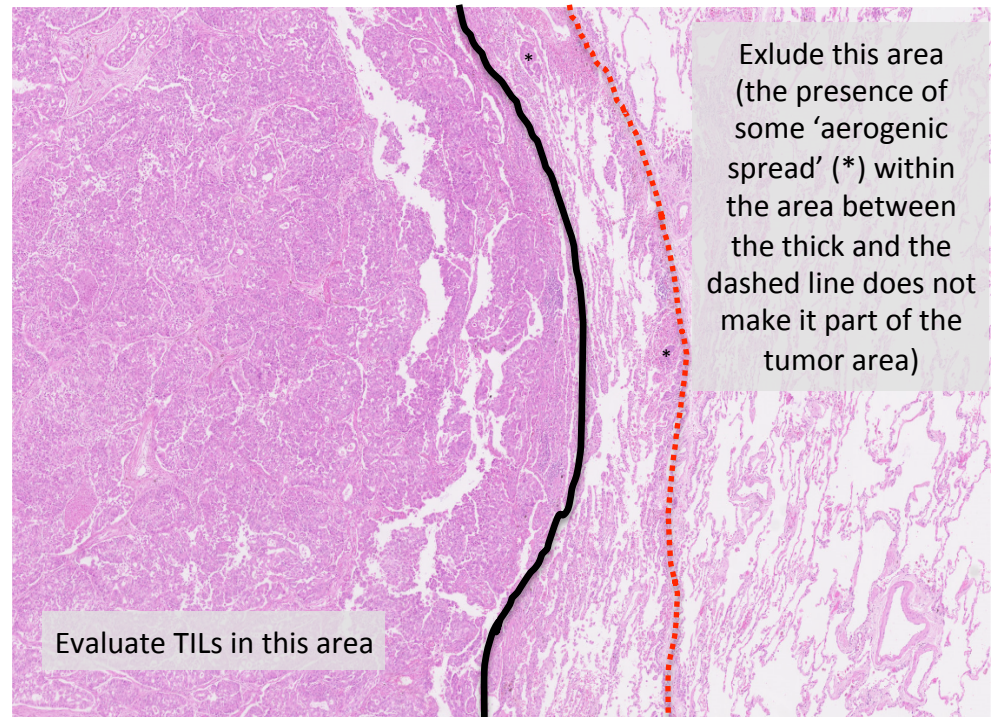
Define area for TILs evaluation

TILs within the borders of the invasive tumors are evaluated

The invasive edge is included in the evaluation, but not reported separately

Immune infiltrates outside of the tumor borders are not included

Areas with pure intra-alveolar tumor cell nests ('aerogenic spread'; no desmoplastic reaction) or with pure lepidic growth pattern (no desmoplastic reaction) are not included



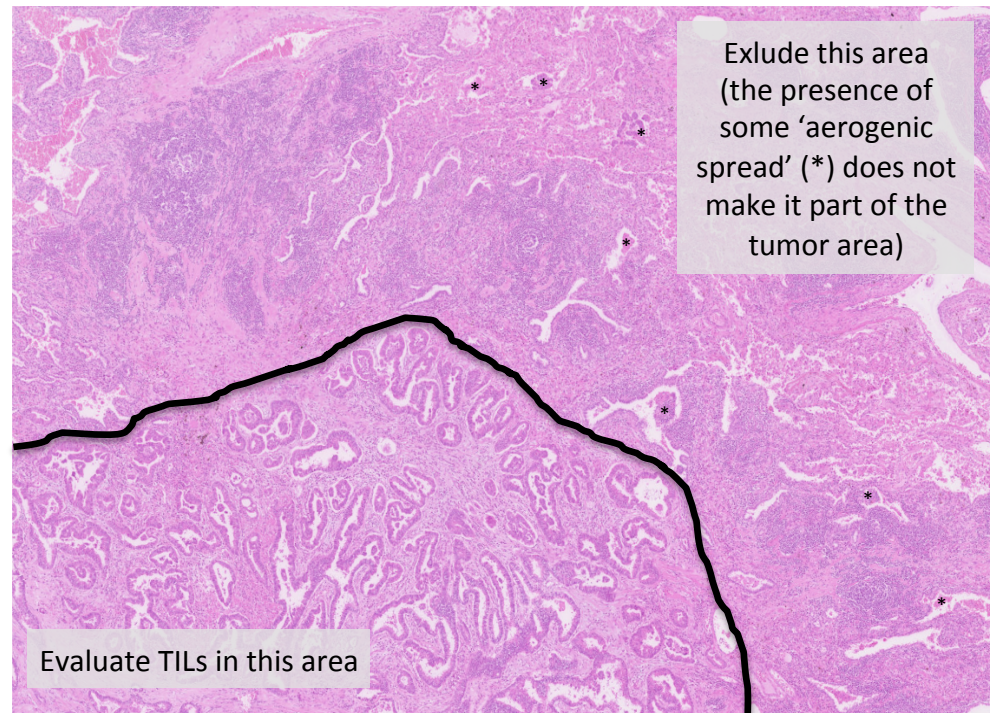
Define area for TILs evaluation

TILs within the borders of the invasive tumors are evaluated

The invasive edge is included in the evaluation, but not reported separately

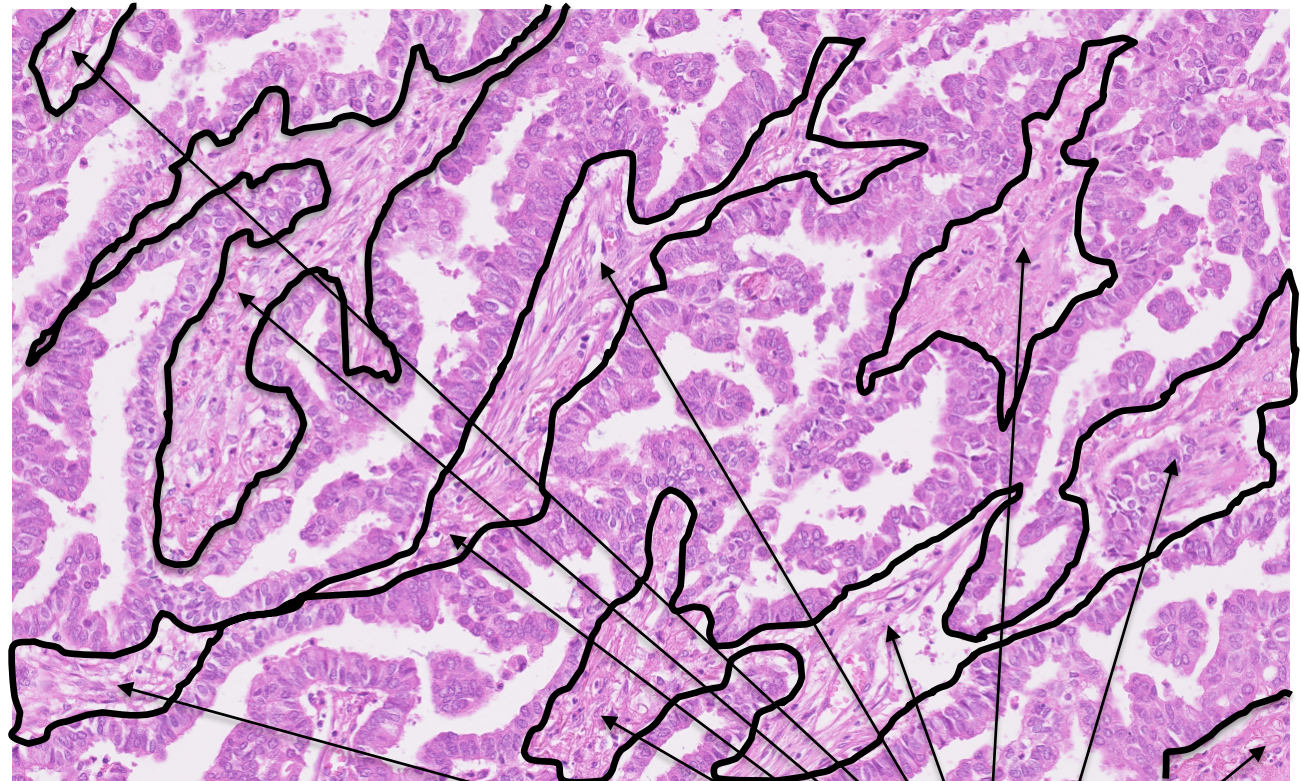
Immune infiltrates outside of the tumor borders are not included

Areas with pure intra-alveolar tumor cell nests ('aerogenic spread'; no desmoplastic reaction) or with pure lepidic growth pattern (no desmoplastic reaction) are not included



Define area for TILs evaluation

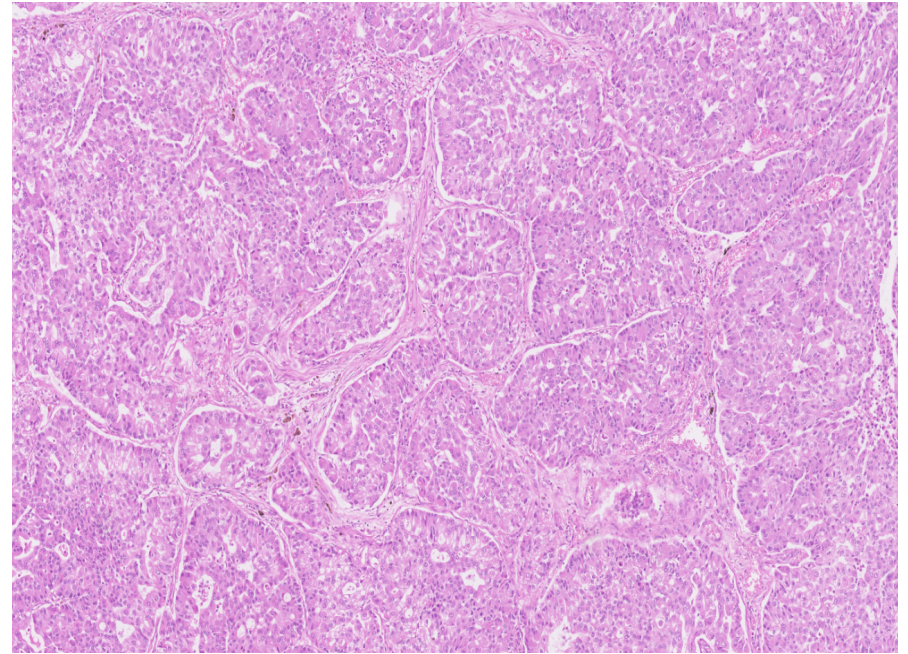
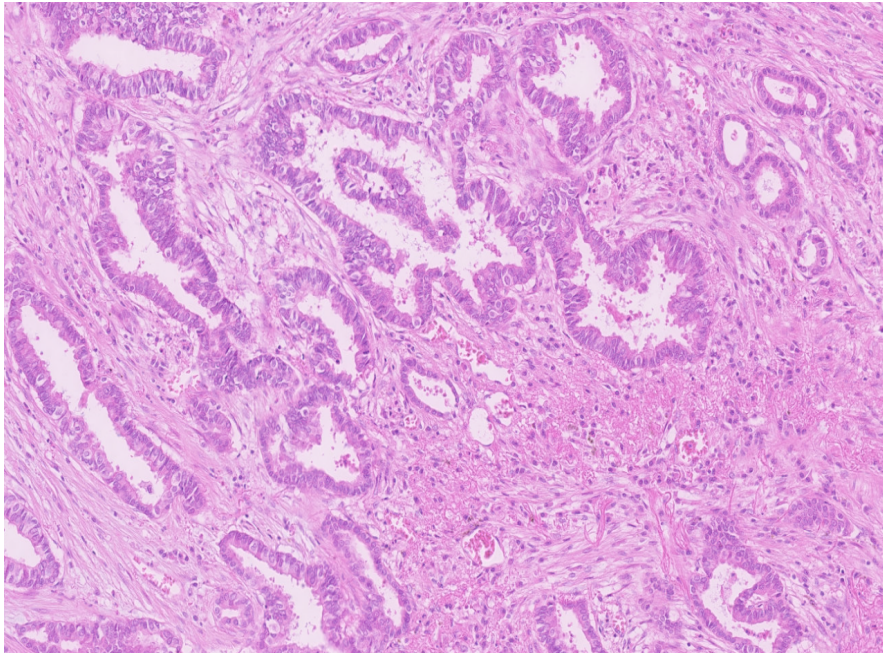
Include TILs evaluation in stroma pertaining to fibro-vascular cores of papillary structures



Include TILs in this area
= stromal TILs

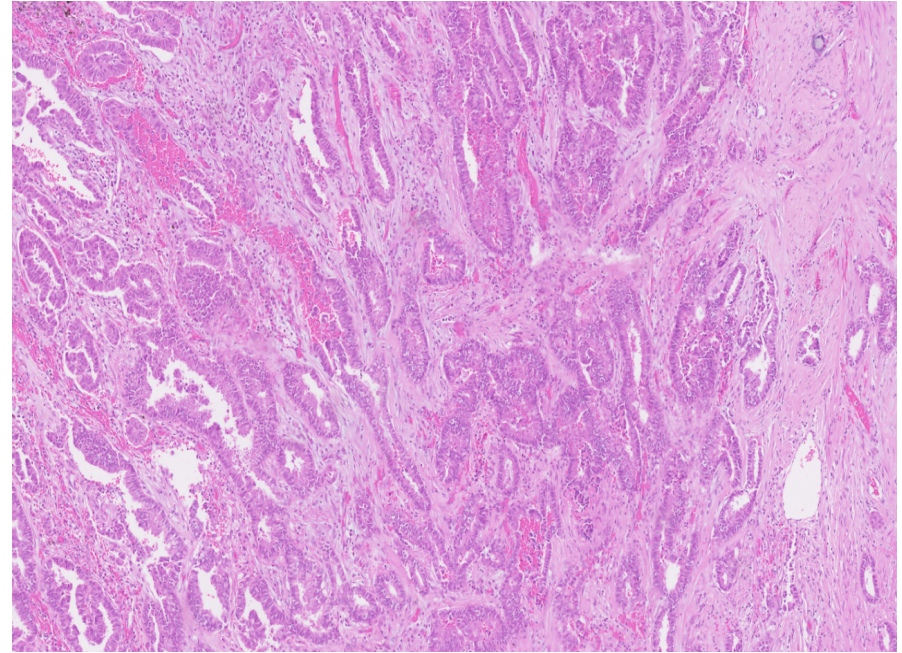
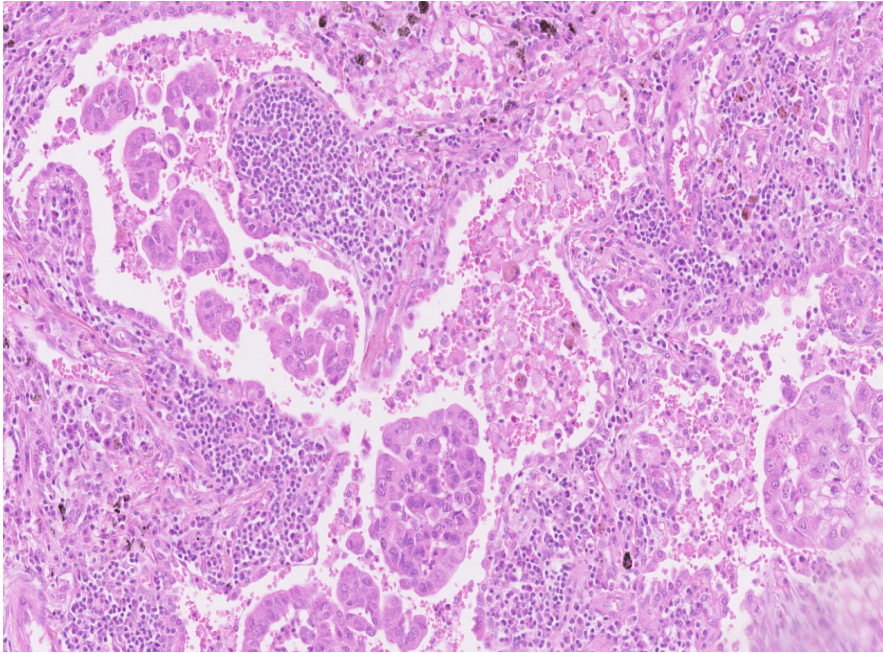
Define area for TILs evaluation

Include TILs evaluation in stroma pertaining to fibro-vascular cores of papillary structures



Define area for TILs evaluation

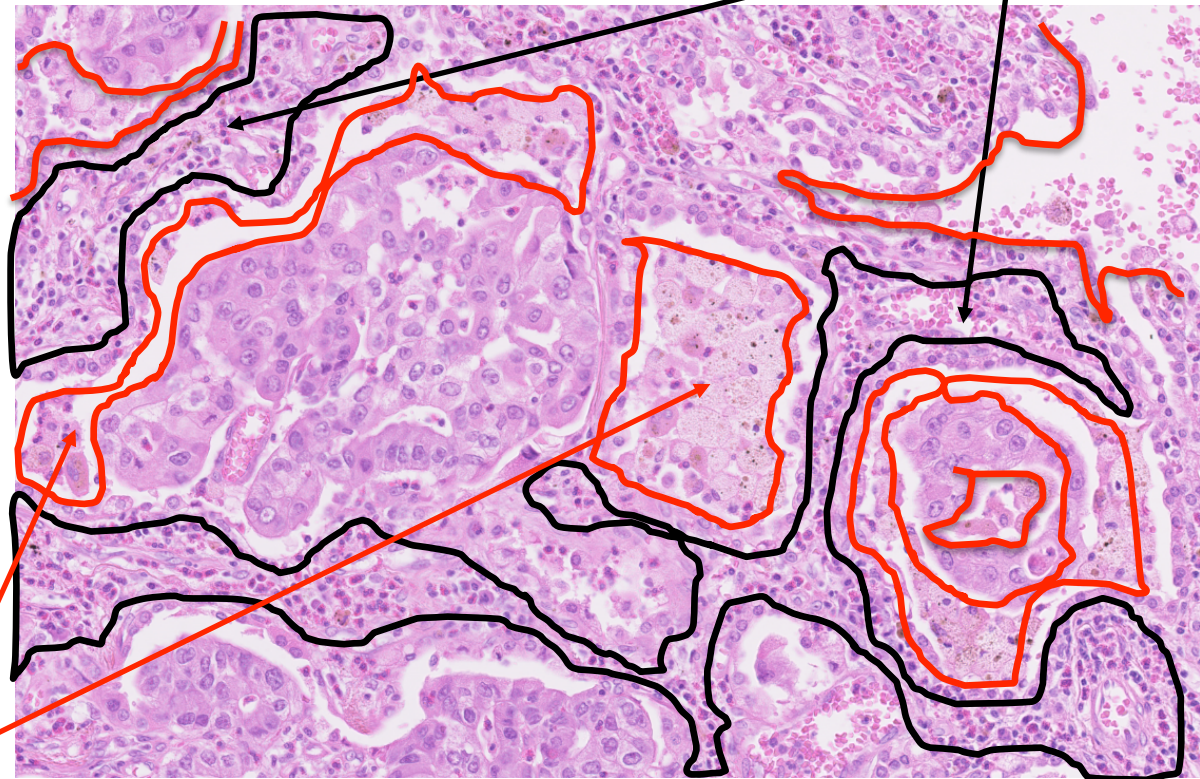
Include TILs evaluation in stroma pertaining to fibro-vascular cores of papillary structures



Define area for TILs evaluation

In cases with (partial) lepidic or intra-alveolar growth of the carcinoma, do not include inflammatory cells in intraalveolar spaces (often mixed with alveolar macrophages)

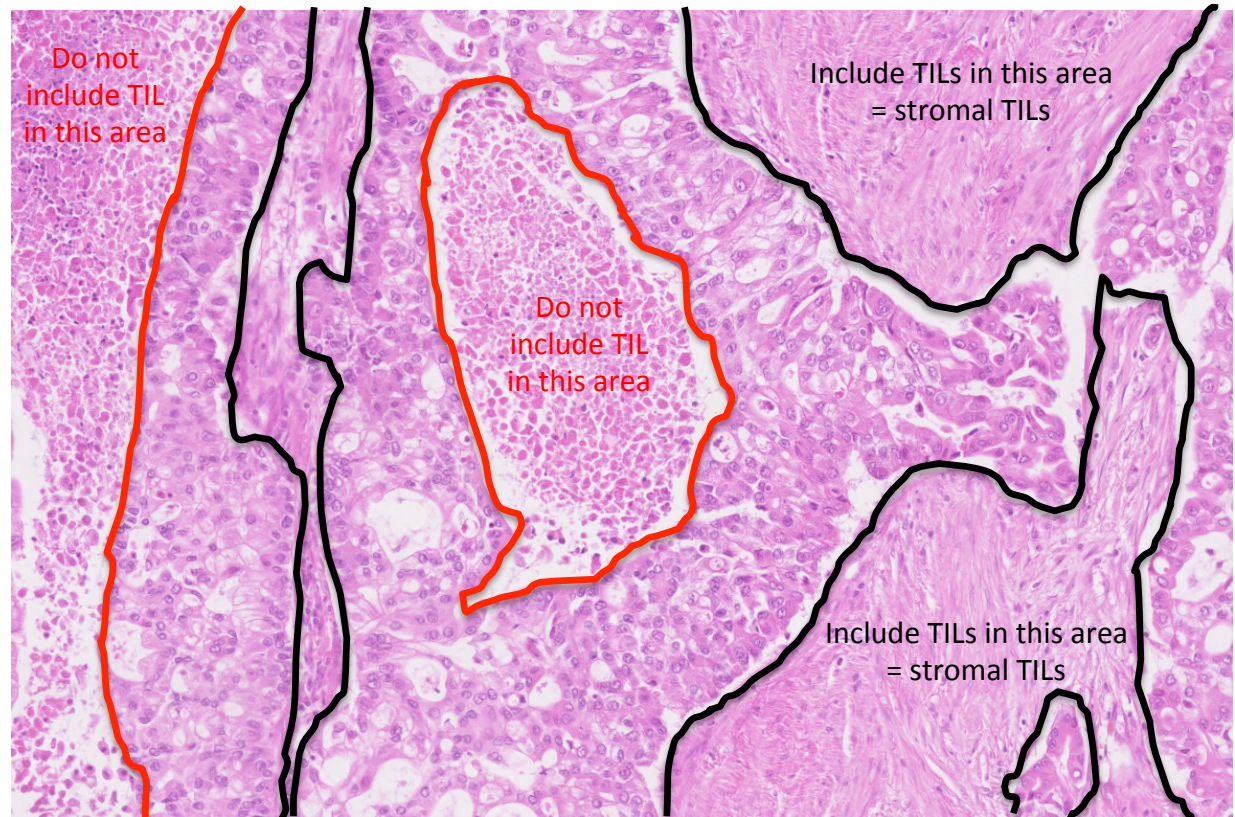
Do not include this area



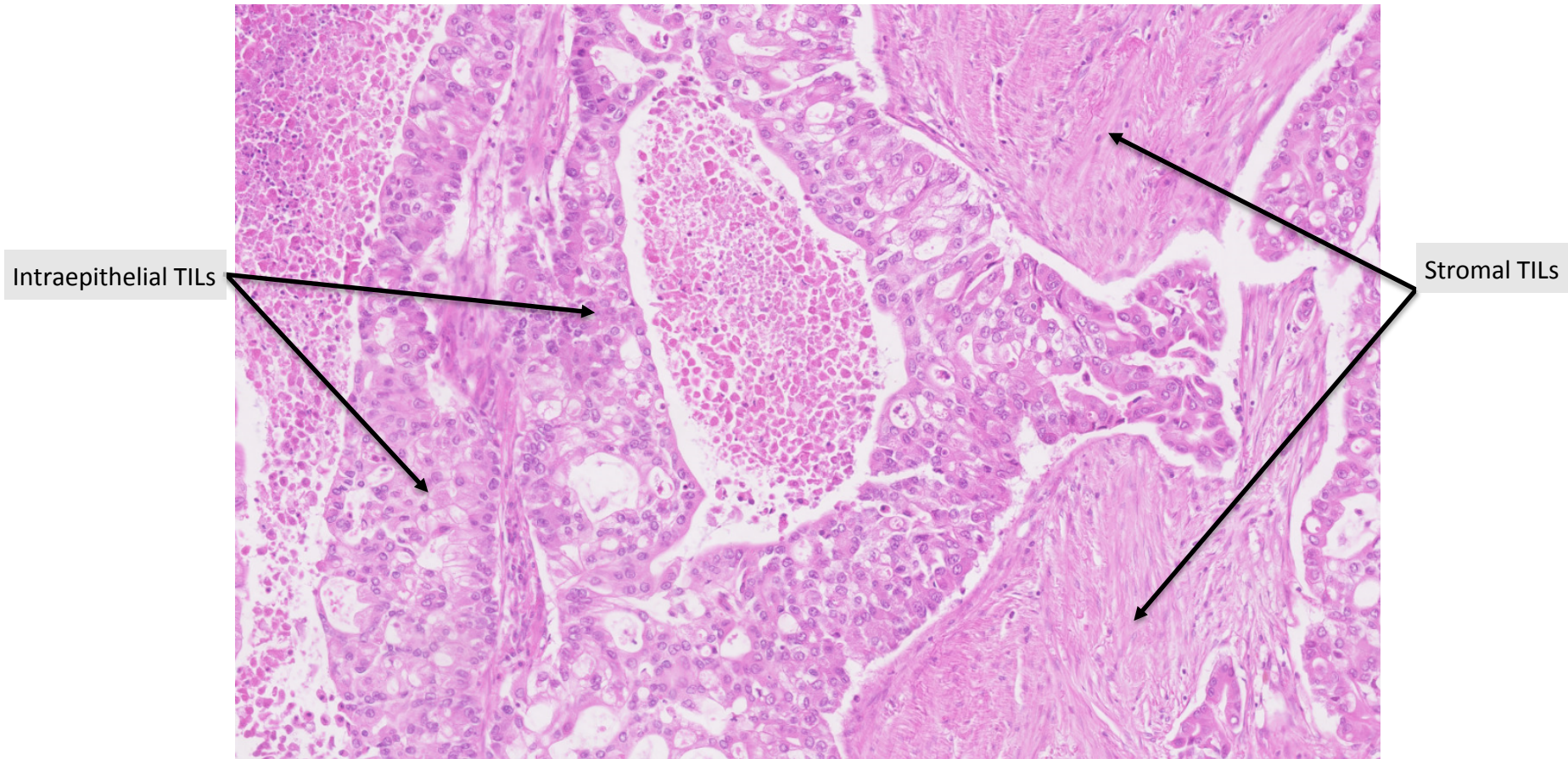
Include this area

Define area for TILs evaluation

- Areas of necrosis or fibrosis are not included in the evaluation



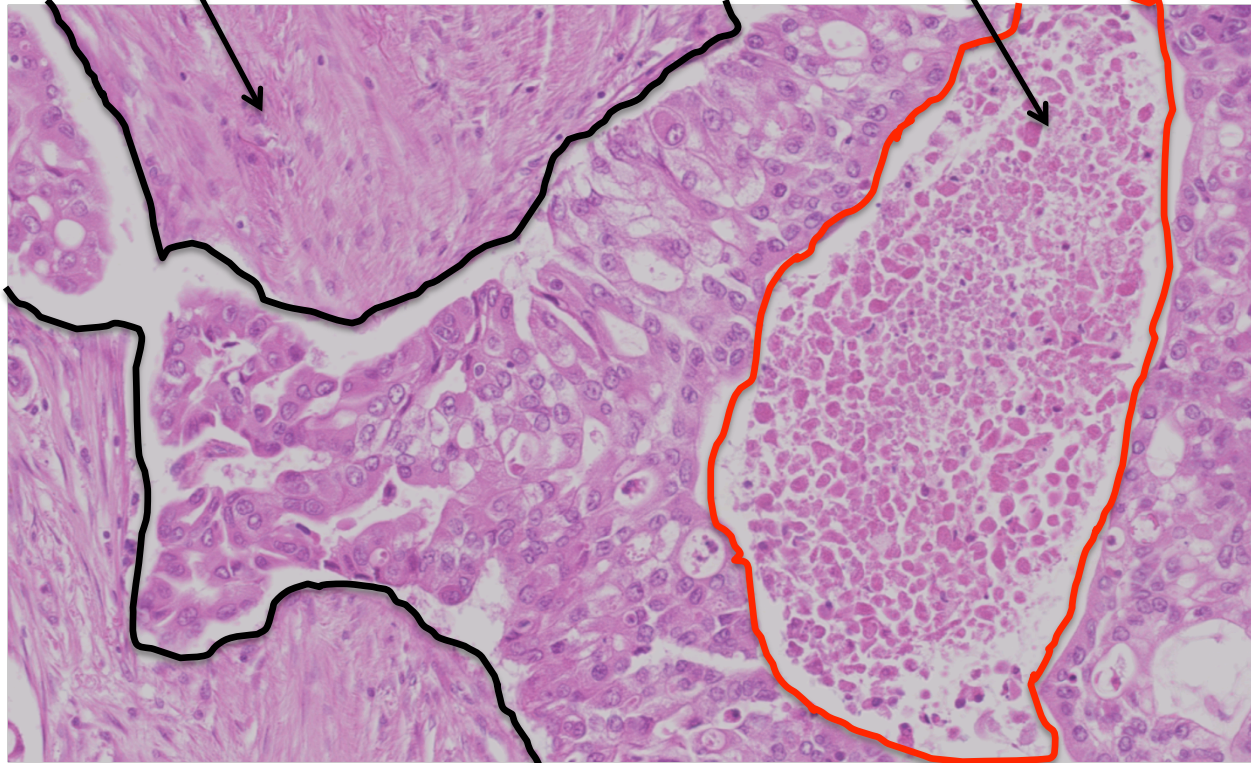
Determine the localization of inflammatory infiltrate



Determine type of inflammatory infiltrate

Include only mononuclear infiltrate
(lymphocytes & plasma cells)

Do not include granulocytic infiltrate
in areas of tumor necrosis



Determine type of inflammatory infiltrate

Include only mononuclear infiltrate
(lymphocytes & plasma cells)

Do not include granulocytic infiltrate
in areas of tumor necrosis

