

REVIEW ARTICLE

Delayed intrinsicoid deflection: Electrocardiographic harbinger of heart disease

Achilles V. Aiken MD | Joshua I. Goldhaber MD | Sumeet S. Chugh MD 

Cedars-Sinai Smidt Heart Institute, Los Angeles, California, USA

Correspondence

Sumeet S. Chugh, Smidt Heart Institute, 127 S San Vicente Blvd #A3600, Los Angeles, CA 90048, USA.
Email: Sumeet.Chugh@cshs.org

Funding information

National Heart, Lung, and Blood Institute, Grant/Award Number: R01HL145675 and R01HL147358

Abstract

Delayed intrinsicoid deflection (DID) is an emerging electrocardiogram (ECG) marker of major clinical significance that is increasingly getting attention. Intrinsicoid deflection measures ventricular depolarization in the initial portion of the QRS complex, and DID is defined as an R wave peak time of ≥ 50 ms in leads V_5 and V_6 . Prior studies have identified an independent association between DID and cardiovascular conditions such as left ventricular hypertrophy, heart failure, and sudden cardiac death. The exact mechanism that results in DID remains unknown. Animal models indicate that DID may result from abnormal calcium and potassium conductance as well as extracellular matrix remodeling. DID remains an ECG marker of interest given its potential predictive value of underlying cardiovascular pathology and adverse events. This review provides an update on the proposed mechanisms and associations, as well as the clinical and research implications of DID.

KEYWORDS

delayed intrinsicoid deflection, heart failure, left ventricular hypertrophy, R wave peak time, sudden cardiac death

1 | INTRODUCTION

Heart disease is the leading cause of death in the United States and accounts for nearly one out of every four deaths (Virani et al., 2020). Nationwide, an estimated 655,000 people die from heart disease each year (Virani et al., 2020). Sudden cardiac death (SCD) accounts for 300,000 to 330,000 deaths annually (Stecker et al., 2014), and an estimated 379,800 patients who died in 2018 carried a diagnosis of heart failure (Virani et al., 2020). Despite a plethora of diagnostic tools and therapeutic options developed in recent decades, cardiovascular disease continues to account for more deaths in the United States than any other cause. The field continues to require enhancement of screening and preventative modalities with the goal of intervening earlier using broadly available risk assessment methodology.

The electrocardiogram (ECG) offers a readily accessible and cost-effective method for cardiovascular disease screening. Several ECG

markers have been associated with underlying heart disease. For example, prolonged QRS, QTc, and JTc intervals have individually been associated with increased risk of SCD (Algra et al., 1991; Aro et al., 2011; Chugh et al., 2009; Straus et al., 2006; Teodorescu et al., 2011) with more recent development of ECG risk scores to enhance clinical risk prediction (Aro et al., 2017). QRS duration ≥ 150 ms and the presence of a left bundle branch block (LBBB) are used to identify patients with heart failure and reduced ejection fraction (HFrEF) who may benefit from cardiac resynchronization therapy (CRT) (Tracy et al., 2013). Based on emerging data regarding independent associations with left ventricular hypertrophy (LVH), heart failure, and SCD (Darouian et al., 2016; O'Neal et al., 2016; Romhilt & Estes, 1968), there is an active and growing interest in delayed intrinsicoid deflection (DID) as an ECG marker of specific heart disease conditions. Utilizing DID as a screening tool may provide an opportunity to identify patients with undiagnosed heart disease prior to adverse

This is an open access article under the terms of the Creative Commons Attribution-NonCommercial-NoDerivs License, which permits use and distribution in any medium, provided the original work is properly cited, the use is non-commercial and no modifications or adaptations are made.

© 2021 The Authors. *Annals of Noninvasive Electrocardiology* published by Wiley Periodicals LLC.

clinical outcomes, and thus allow clinicians the ability to maximize the benefits of the available cardiac therapies. Given its association with cardiovascular pathology and adverse cardiovascular events, DID may provide a window to identify patients in advance of these cardiovascular sequelae to reduce the mortality burden associated with heart disease.

2 | DEFINITION AND MEASUREMENT

The term intrinsicoid deflection (ID) is defined as the R wave time to peak and was first reported by MacLeod, Wilson, and Barker in 1930 (MacLeod & Barker, 1930). ID represents the initial phase of ventricular depolarization and is the measurement of the time from the onset of the QRS complex to the peak of the R wave just prior to the first downward deflection. If there are multiple R wave peaks, such as in a right bundle branch block (RBBB) in lead V_1 , the ID is measured from the beginning of the QRS complex to the last R wave peak just prior to steepest downward deflection. The normal R wave peak time of the left ventricle is <50 ms (Perez-Riera et al., 2016). DID is typically defined as an R wave peak time ≥ 50 ms in leads V_5 and V_6 (Sokolow & Lyon, 1949) and represents a delay in the initial phase of left ventricular (LV) depolarization. Since Leads V_5 and V_6 are the standard for measurement of ID time, incorrect lead placement could potentially affect the accuracy of this measurement.

3 | MECHANISMS AND PATHOPHYSIOLOGY

Multiple mechanisms have been proposed for the delay in ventricular depolarization observed in DID. One proposed mechanism is attributed to abnormalities in myocardial action potential related to calcium and potassium ion channel function. The action potential

duration of the ventricular cardiac myocyte is largely determined by the plateau phase and repolarization phase. During the plateau phase of the action potential, calcium ion influx into the cardiac myocyte via the L-type calcium channel and sodium ion entry via the Na/Ca exchanger result in continued depolarization of the myocyte (Figure 1) (Bers, 2002), which is balanced by the repolarizing effects of potassium ion efflux from the cardiac myocyte via potassium ion channels. During the repolarization phase, calcium channels are mostly inactive and potassium ion efflux persists resulting in repolarization (Spragg et al., 2018).

In female guinea pigs undergoing infrarenal aortic coarctation resulting in mild LVH, action potential durations were prolonged when compared to the non-hypertrophied female guinea pig myocytes. Hypertrophied guinea pig myocytes displayed increased calcium current via increased L-type calcium current density and prolonged sodium-calcium exchanger current activation. Prolonged sodium-calcium exchanger activation during the plateau phase of the action potential results in increased sodium influx and calcium efflux, which prolongs the action potential duration (Figure 2) (Bers, 2002). In this animal model of a mild pressure-overload system, there was no change in potassium current (Ryder et al., 1993). The increase in calcium current found in guinea pigs with LVH may reveal a component of the electrophysiologic changes that contribute to action potential prolongation via prolonged plateau and repolarization phases resulting in DID.

In guinea pigs with severe LVH, an increase in calcium current was again identified; however, a reduction in potassium current via I_{K1} and I_K channels was also observed (Ryder et al., 1991). In rabbits with LVH, reduction in potassium current via decreased I_{K1} and I_{to} potassium channel currents was also found in hypertrophied myocytes along with action potential prolongation when compared to non-hypertrophied rabbit hearts (McIntosh et al., 1998). In cats with LVH following aortic banding, action potential durations were prolonged, but with increased variability. There was greater dispersion

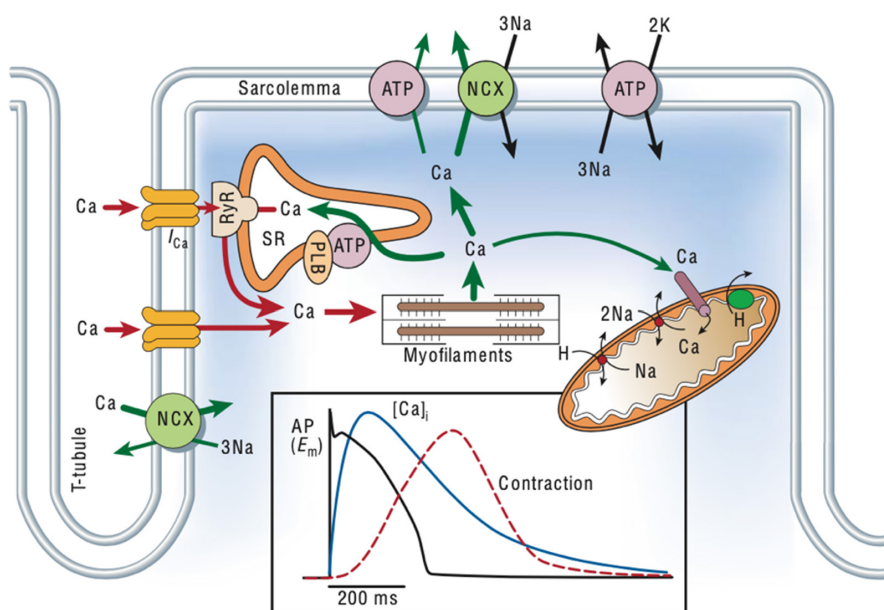


FIGURE 1 Calcium current during the plateau phase of the action potential. Calcium influx via L-type calcium channels (I_{Ca}) and sodium influx via the sodium-calcium exchanger (NCX) results in continued myocyte depolarization during the plateau phase of the action potential. (Reprinted with permission from Bers, 2002)

of refractoriness, the difference between the shortest and longest refractory periods, among contiguous hypertrophied cardiac myocytes when compared to cats with non-hypertrophied cardiac myocytes. The hypertrophied left ventricles of cats also displayed lower excitability thresholds for induction of ventricular fibrillation (VF) when compared to non-hypertrophied cat left ventricles (Kowey

et al., 1991). The increased calcium current and reduced potassium current observed in animal models of LVH may produce prolonged plateau and repolarization phases resulting in action potential prolongation as well as variability in both action potential duration and refractory period. These dispersions of action potential duration and refractory period may produce the substrate that promotes re-entry circuits and arrhythmogenesis in LVH (Wolk, 2000). These findings may also play a role in the mechanism by which DID is observed clinically in patients with LVH and predisposes patients with LVH to ventricular arrhythmias and SCD.

Another proposed mechanism that may contribute to the development of DID identified in a prior study is the reduction in myocardial cell gap junctions in ischemic and hypertrophied human heart tissue (Peters et al., 1993). Gap junctions are important organelles required for intercellular conductance within the myocardium (Figure 3) (Stanfield, 2017). In this study, surgical myocardial tissue samples from chronically ischemic or hypertrophied ventricular myocardial tissue were sampled and compared to normal ventricular myocardial tissue. The chronically ischemic or hypertrophied ventricular myocardial tissue samples displayed a preserved number of intercalated discs when compared to normal ventricular myocardial tissue. However, both the ischemic and hypertrophied myocardial tissue displayed a 40% reduction in gap junction surface area per unit volume when compared to normal myocardial tissue (Peters et al., 1993). These findings indicate that myocardial remodeling in both the ischemic and hypertrophied heart results in decreased gap junction density between myocytes, which may contribute to the action potential duration prolongation and increased dispersion observed in hypertrophied animal left ventricles. These myocardial abnormalities may contribute to the the arrhythmias and cardiac conduction abnormalities associated with LVH and ischemic heart disease. DID may also manifest electrocardiographically via delayed electrochemical communication between contiguous myocytes as a result of reduced gap junction availability.

The extracellular matrix of the myocardium also appears to play a role in the delayed ventricular depolarization observed in DID

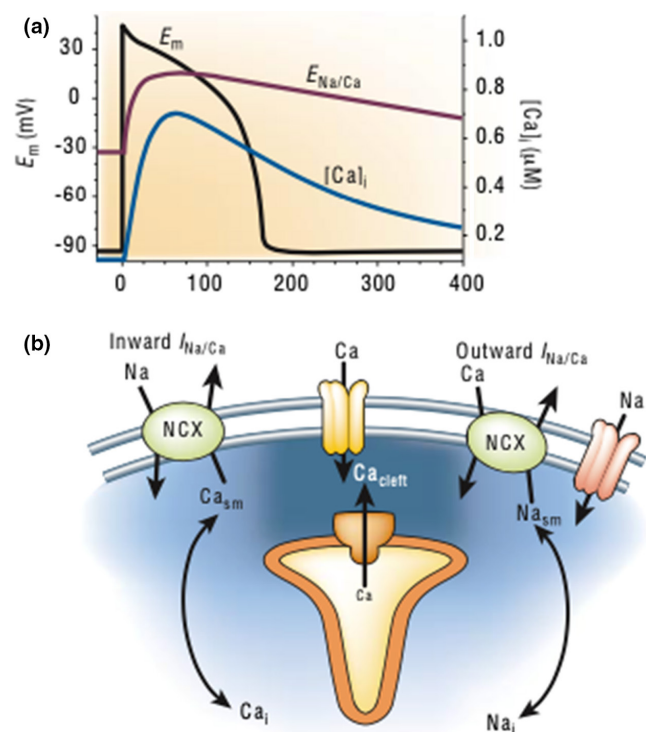
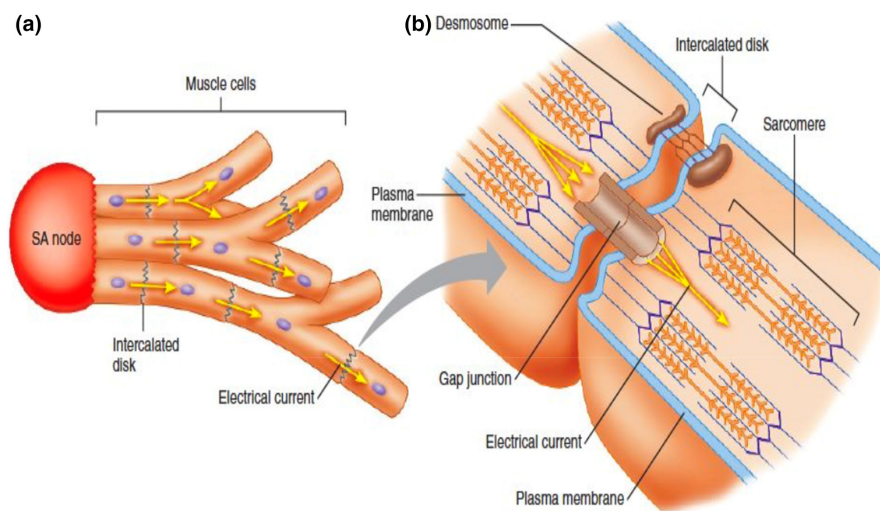


FIGURE 2 Sodium-calcium exchanger during an action potential. (a) Calcium current $[Ca]_i$ increases during the plateau phase of the action potential and results in increased sodium-calcium exchanger activation ($E_{Na/Ca}$). (b) Inward current ($I_{Na/Ca}$) via the sodium-calcium exchanger (NCX) results from sodium influx and calcium efflux. Outward current ($I_{Na/Ca}$) results from sodium efflux and calcium influx. (Adapted with permission from Bers, 2002).

FIGURE 3 Myocardial gap junctions. (a) An action potential generated in the sinoatrial (SA) node and an electrical current conducted to adjacent myocytes via gap junctions within intercalated disks. (b) A gap junction transmitting an electrical current between adjacent myocytes. (Adapted with permission from Stanfield, 2017)



(Figure 4) (Mewton et al., 2011). Hypertrophied hearts of primates with perinephritis and systemic hypertension were found to have increased quantity of collagen deposition between myofibers (Weber et al., 1987). A number of studies have also observed that interstitial fibrosis follows collagen deposition in systemic hypertension and myocardial hypertrophy among both primate (Abrahams et al., 1987; Pick et al., 1989; Weber et al., 1988) and rat (Carroll et al., 1989; Doering et al., 1988; Jalil et al., 1988, 1989; Jalil, Doering, et al., 1989; Silver et al., 1990; Weber et al., 1990) models. Myocyte size may also contribute to the electrophysiological alterations seen in LVH especially since conduction velocity was increased yet QRS duration was prolonged in a rabbit model of LVH and heart failure, when compared to normal rabbit hearts (Wiegerinck et al., 2006). Therefore the pathophysiology of DID appears to be multifactorial. In addition to action potential prolongation and increased dispersion via altered calcium and potassium ion conductance; reduced gap junction density, increased interstitial fibrosis and increased cardiac myocyte size may also contribute to DID.

4 | LEFT VENTRICULAR HYPERTROPHY

Delayed intrinsicoid deflection appears to represent an ECG marker of an underlying conduction defect that has been independently associated with multiple cardiovascular disease processes. DID ≥ 50 ms in leads V_5 and V_6 has been associated with LVH and is used in the Romhilt-Estes (R-E) ECG criteria for LVH (Noth et al., 1947; Romhilt et al., 1969; Sokolow & Lyon, 1949). The Romhilt-Estes (R-E) ECG criteria for LVH has also been associated with an increased all-cause mortality (Estes et al., 2015). In previous studies, DID was attributed to increased left ventricular (LV) mass and displayed a positive correlation with LV mass (Baxley et al., 1968; Grubschmidt & Sokolow, 1957). Despite the association of DID and the R-E ECG criteria with LVH, the association between DID and echocardiographic LVH has been inconsistent (Darouian et al., 2016). In fact, the sensitivity of the R-E ECG criteria for predicting increased LV mass has been estimated at only 60% (Romhilt & Estes, 1968). Previous studies have also reported that the R-E ECG score predicts sudden cardiac arrest (SCA) independent of LV mass and ejection fraction (Darouian et al., 2017). As such, there appears to be an overlap between the association of DID with ECG LVH and anatomic LVH; however, DID appears to confer an arrhythmogenic risk independent of anatomic LVH as well.

5 | HEART FAILURE

Abnormalities in ventricular depolarization as measured by ECG markers have been associated with development of heart failure. QRS prolongation as well as the presence of left bundle branch block (LBBB), as opposed to right bundle branch block (RBBB), have been associated with the incidence of heart failure (Ilkhanoff et al., 2012; Zhang et al., 2015). A previous study also identified an association

between increasing ID time and risk for heart failure events. In this study, for each 10 ms increase in ID time, there was a 1.42 greater risk of heart failure events, and that risk increased significantly when the ID time was >45 ms (O'Neal et al., 2016). Given the stronger association between LV conduction defects and heart failure, DID may be a better predictor of delayed LV activation, and therefore heart failure, compared to QRS duration. DID appears to not only predict the risk of heart failure, but also the preferential risk of HFrEF over HFpEF. In another study, DID of >50 ms in leads V_5 and V_6 was a strong predictor of heart failure events (HR 2.81). However, only the risk of HFrEF (HR 4.90) events was strongly associated with DID, with no significant association identified between DID and the risk of HFpEF (HR 0.94). HFpEF events were instead associated with abnormal P-wave axis, QRS-T axis, and higher resting heart rate (O'Neal et al., 2017). These findings imply that distinct ECG markers arising from likely distinct pathophysiological mechanisms, appear to predict HFrEF and HFpEF.

In patients with HFrEF, QRS prolongation and the presence of a LBBB are utilized to guide the implementation of CRT (Tracy et al., 2013). However, up to one-third of HFrEF patients do not respond to CRT despite its potential reverse remodeling (RR) and mortality benefits (Auricchio & Prinzen, 2011; Prinzen et al., 2013). QRS duration is a measure of both right and left ventricular conduction, which may limit its utility in predicting CRT response (Sipahi et al., 2011). DID is another ECG marker that has been associated with response to CRT. Prolonged time to ID in lateral leads, I and aVL, was found to be a better predictor of volumetric RR response to CRT than pre-implantation QRS duration or post-implantation QRS reduction (Del-Carpio Munoz et al., 2013). DID may identify patients who are at risk for developing heart failure, and also improve selection HFrEF patients who are more likely to benefit from heart failure therapies such as CRT.

6 | SUDDEN CARDIAC DEATH

ECG markers, including prolonged QRS, QTc, JTc, and elevated resting heart rate have been associated with SCD (Algra et al., 1991; Aro et al., 2011; Chugh et al., 2009; Straus et al., 2006; Teodorescu et al., 2011). LVH, by both electrical and anatomic measurements, has also been associated with an increased risk of SCD (Romhilt & Estes, 1968). DID of ≥ 50 ms in leads V_5 and V_6 was found to be an independent risk factor for SCA with an odds ratio of 1.82 when controlled for diabetes, chronic renal insufficiency, severe LV dysfunction (LVEF $\leq 35\%$), echocardiographic LVH, QRS duration, JTc prolongation, and heart rate (Darouian et al., 2016). LVEF, as an isolated risk factor, has been associated with an arrhythmic mortality risk of less than 5% over a 2-year span (Buxton et al., 2007). Despite the association of SCA with multiple other markers such as DID, LVEF continues to be the main parameter by which implantable cardioverter-defibrillator (ICD) therapy is offered to heart failure patients for primary prevention of SCA (Al-Khatib et al., 2018). DID appears to indicate an underlying myocardial abnormality that is independent of currently used

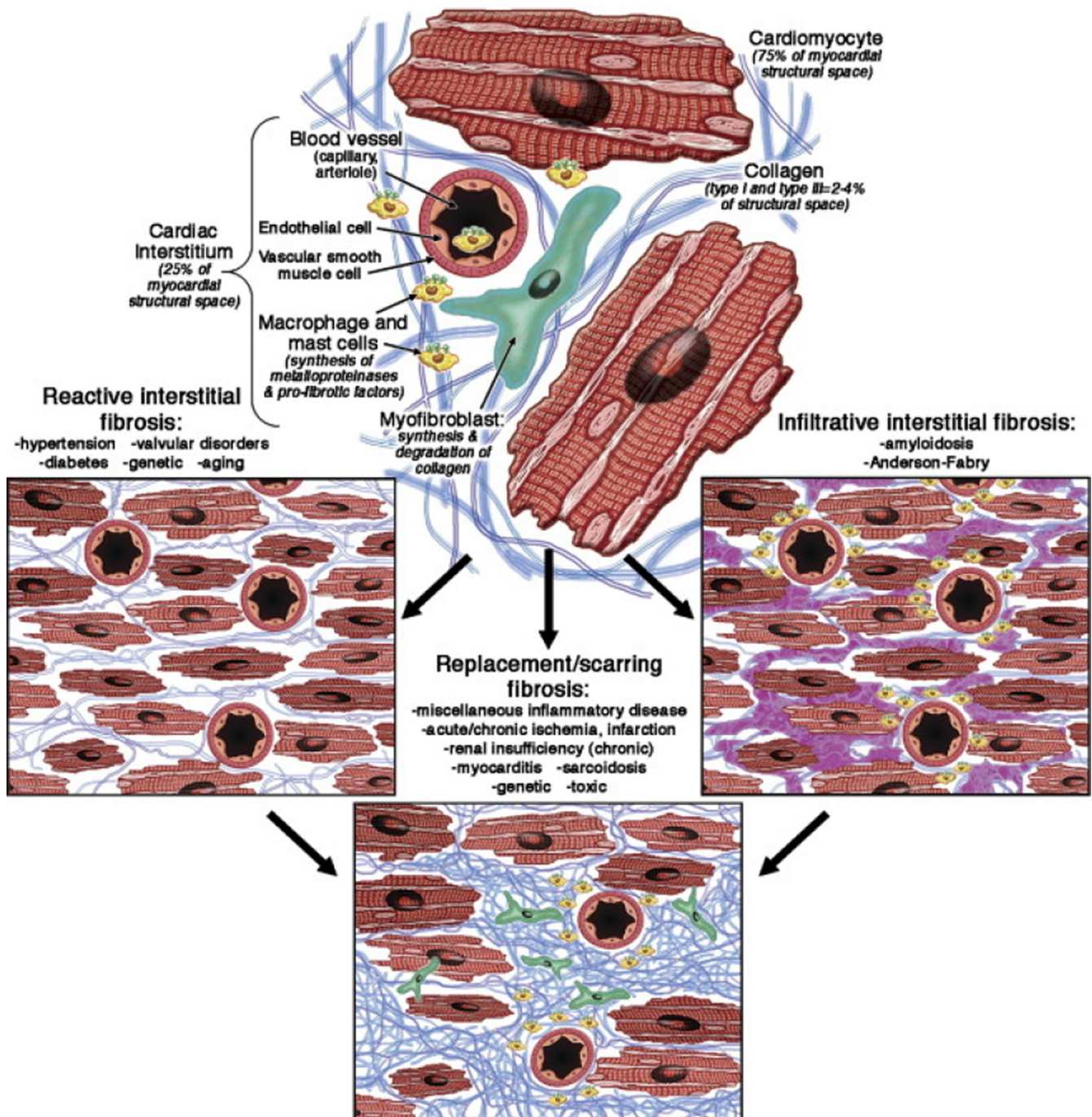


FIGURE 4 Extracellular matrix remodeling. Myocardial injury leads to abnormal extracellular matrix remodeling in the form of myocyte hypertrophy, interstitial fibrosis, and collagen deposition. (Adapted with permission from Mewton et al., 2011)

diagnostic measures, and warrants further evaluation as a clinical predictor of SCA.

7 | CLINICAL AND RESEARCH IMPLICATIONS

Given the association of DID with underlying heart disease, identifying DID in patients at risk for these cardiovascular pathologies

may offer clinicians a window to prevent the cardiac complications associated with DID or influence the clinical trajectory of patients whose pathology has already manifested (Figure 5). In patients with coronary artery disease (CAD) and angina without typical ECG or serological findings consistent with ongoing myocardial ischemia, DID may potentially indicate increased risk of future clinical events warranting more urgent ischemic evaluation, and should be evaluated further. In patients with essential hypertension, the development of DID could be an indicator of LVH and the need for more aggressive

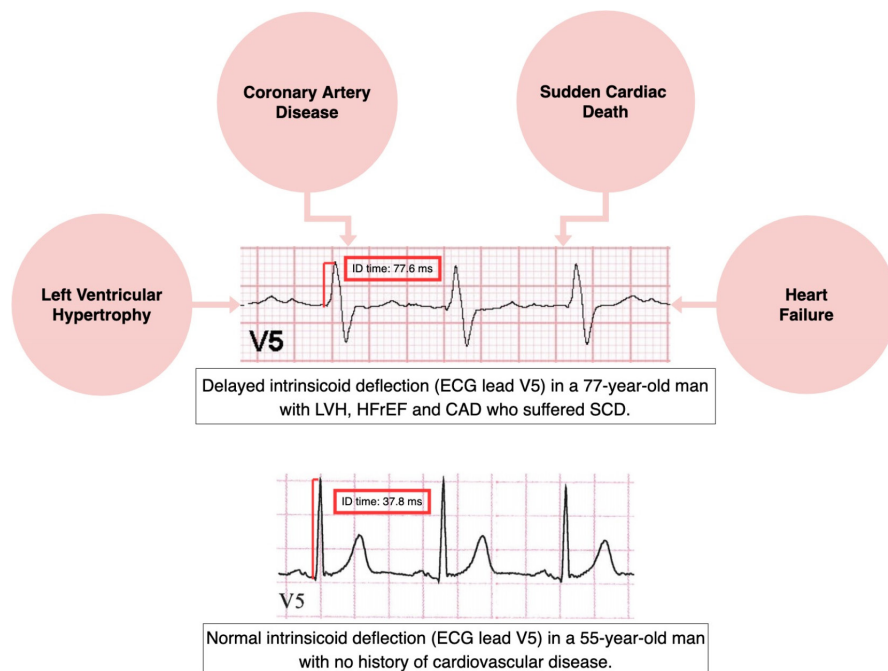


FIGURE 5 Clinical examples of delayed and normal intrinsicoid deflection linked to specific clinical conditions. Delayed intrinsicoid deflection (DID) is an electrocardiographic (ECG) manifestation of underlying cardiovascular disease including left ventricular hypertrophy (LVH), coronary artery disease (CAD), heart failure (in this case HFrEF, heart failure with reduced ejection fraction), and sudden cardiac death (SCD)

lifestyle modifications and antihypertensive medical management as well as monitoring for clinical symptoms of impending heart failure. In LVH and diastolic heart failure, Q waves in the left lateral precordial leads V_5 and V_6 result in increased ID time (Perez-Riera et al., 2016). DID monitoring may also provide the opportunity to identify currently asymptomatic patients who are at risk for developing clinical HFrEF. DID also offers the potential to improve prediction of which patients would benefit from CRT.

While additional prospective studies are warranted, there is likely enough evidence in the existing literature to prompt a cardiac evaluation in patients who are found to have DID on the 12-lead ECG. Given that for each 10 ms increase in ID time there is a 1.42 greater risk of heart failure events (O'Neal et al., 2016), we suggest consideration of clinical evaluation in patients with DID of 50 ms or greater. Even if the finding is incidental, it is reasonable to assess cardiovascular risk factors, but need for a coronary disease evaluation and assessment of cardiac structure and function with an echocardiogram is warranted. Depending on the nature and severity of symptoms as well as the clinical presentation, this workup could be escalated and/or broadened due to an increased pre-test probability of coronary artery disease and heart failure. Specifically for sudden cardiac death risk stratification, this marker has significant potential, but larger prospective studies are needed prior to clinical adoption.

Since intrinsicoid deflection is a "component" of the QRS interval, there is likely a relationship between these two measurements although there is limited data in the literature specifically evaluating this relationship. However, as best as we can tell, the two markers may also have distinct associations depending on the disease condition being evaluated. In the context of sudden cardiac death, DID appears to be a better predictor than QRS duration alone. DID has been independently associated with SCA when controlling for heart

rate, QRS duration, severe LV dysfunction, echocardiographic LVH, diabetes mellitus, and chronic renal insufficiency. QRS duration was not independently associated with SCA in the same multivariate analysis (Darouian et al., 2016). In heart failure, there appears to be more of an overlap with both DID (HR 2.81) and prolonged QRS (HR 1.70) appearing to predict heart failure events. DID also confers a stronger association with HFrEF (HR 4.90) as opposed to HFpEF (HR 0.94) (O'Neal et al., 2017). In the context of selecting candidates for CRT, the vast majority of studies suggest that QRS duration is a clinically effective marker. However, prolonged time to ID in lateral leads, I and aVL, was found to be a better predictor of volumetric RR response to CRT than pre-implantation QRS duration (Del-Carpio Munoz et al., 2013). Overall, this is likely a complex relationship between DID and QRS duration, and future studies should make the effort to evaluate both markers.

The nationwide mortality burden attributed to SCD remains high despite efforts at primary prevention with ICD therapy. This disparity may be due to the use of severely reduced LVEF $\leq 35\%$ as the main parameter by which ICD therapy is offered for primary prevention in heart failure, since there is estimated to only be a 2–5% annual risk of SCD among patients with an LVEF $\leq 35\%$ and only one-third of SCD cases having an LVEF $\leq 35\%$ (Bardy et al., 2005; Moss et al., 2002; Stecker et al., 2006). Extending beyond LVEF as the sole marker by which ICD therapy is offered for primary prevention in heart failure, and utilizing other markers, such as DID, could result in improved candidate selection for the primary prevention ICD.

More research is needed to further elucidate the mechanisms by which DID reflects evolving myocardial conduction disease that places patients at risk for adverse cardiovascular events. Large, detailed studies that evaluate the association of DID with LVH, heart failure, and SCA should improve the predictive value

of DID for these manifestations of heart disease. This could lead to development of enhanced screening strategies that facilitate preemptive interventions for overall reduction of cardiovascular morbidity and mortality.

8 | PERSPECTIVES

- DID is an emerging ECG marker associated with multiple adverse cardiovascular events including SCD.
- DID manifests phenotypically in LVH, CAD, and HFrEF patients.
- DID may reflect abnormal calcium and potassium conductance and extracellular matrix remodeling.
- Further research is needed to incorporate DID in risk stratification strategies that enhance prevention of adverse cardiovascular events.

ACKNOWLEDGMENTS

Funded by National Institutes of Health, National Heart Lung and Blood Institute Grants R01HL147358 and R01HL145675 to SSC. SSC holds the Pauline and Harold Price Chair in Cardiac Electrophysiology at Cedars-Sinai.

AUTHOR CONTRIBUTIONS

AVA initial draft and completion of manuscript; JIG review and revisions to manuscript; SSC conception, review and revisions to manuscript.

ETHICAL APPROVAL

Does not meet criteria for review by institution review board. Literature search data available upon request.

CONFLICT OF INTEREST

The authors declare no conflicts of interest.

ORCID

Sumeet S. Chugh  <https://orcid.org/0000-0002-4417-5326>

REFERENCES

- Abrahams, C., Janicki, J. S., & Weber, K. T. (1987). Myocardial hypertrophy in *Macaca fascicularis*. Structural remodeling of the collagen matrix. *Laboratory Investigation*, *56*(6), 676–683.
- Algra, A., Tijssen, J. G., Roelandt, J. R., Pool, J., & Lubsen, J. (1991). QTc prolongation measured by standard 12-lead electrocardiography is an independent risk factor for sudden death due to cardiac arrest. *Circulation*, *83*(6), 1888–1894. <https://doi.org/10.1161/01.cir.83.6.1888>
- Al-Khatib, S. M., Stevenson, W. G., Ackerman, M. J., Bryant, W. J., Callans, D. J., Curtis, A. B., Deal, B. J., Dickfeld, T., Field, M. E., Fonarow, G. C., Gillis, A. M., Granger, C. B., Hammill, S. C., Hlatky, M. A., Joglar, J. A., Kay, G. N., Matlock, D. D., Myerburg, R. J., & Page, R. L. (2018). 2017 AHA/ACC/HRS guideline for management of patients with ventricular arrhythmias and the prevention of sudden cardiac death: Executive summary: A Report of the American College of Cardiology/American Heart Association Task Force on Clinical Practice Guidelines and the Heart Rhythm Society. *Heart Rhythm: the Official Journal of the Heart Rhythm Society*, *15*(10), e190–e252. <https://doi.org/10.1016/j.hrthm.2017.10.035>
- Aro, A. L., Anttonen, O., Tikkanen, J. T., Junttila, M. J., Kerola, T., Rissanen, H. A., Reunanen, A., & Huikuri, H. V. (2011). Intraventricular conduction delay in a standard 12-lead electrocardiogram as a predictor of mortality in the general population. *Circulation: Arrhythmia and Electrophysiology*, *4*(5), 704–710. <https://doi.org/10.1161/CIRCEP.111.963561>
- Aro, A. L., Reinier, K., Rusinaru, C., Uy-Evanado, A., Darouian, N., Phan, D., Mack, W. J., Jui, J., Soliman, E. Z., Tereshchenko, L. G., & Chugh, S. S. (2017). Electrical risk score beyond the left ventricular ejection fraction: Prediction of sudden cardiac death in the Oregon Sudden Unexpected Death Study and the Atherosclerosis Risk in Communities Study. *European Heart Journal*, *38*(40), 3017–3025. <https://doi.org/10.1093/eurheartj/ehx331>
- Auricchio, A., & Prinzen, F. W. (2011). Non-responders to cardiac resynchronization therapy: The magnitude of the problem and the issues. *Circulation Journal*, *75*(3), 521–527. <https://doi.org/10.1253/circj.cj-10-1268>
- Bardy, G. H., Lee, K. L., Mark, D. B., Poole, J. E., Packer, D. L., Boineau, R., Domanski, M., Troutman, C., Anderson, J., Johnson, G., McNulty, S. E., Clapp-Channing, N., Davidson-Ray, L. D., Fraulo, E. S., Fishbein, D. P., Luceri, R. M., & Ip, J. H. (2005). Amiodarone or an implantable cardioverter-defibrillator for congestive heart failure. *New England Journal of Medicine*, *352*(3), 225–237. <https://doi.org/10.1056/NEJMoa043399>
- Baxley, W. A., Dodge, H. T., & Sandler, H. (1968). A quantitative angiographic study of left ventricular hypertrophy and the electrocardiogram. *Circulation*, *37*(4), 509–517. <https://doi.org/10.1161/01.cir.37.4.509>
- Bers, D. M. (2002). Cardiac excitation-contraction coupling. *Nature*, *415*(6868), 198–205. <https://doi.org/10.1038/415198a>
- Buxton, A. E., Lee, K. L., Hafley, G. E., Pires, L. A., Fisher, J. D., Gold, M. R., Josephson, M. E., Lehmann, M. H., & Prystowsky, E. N. (2007). Limitations of ejection fraction for prediction of sudden death risk in patients with coronary artery disease: Lessons from the MUSTT study. *Journal of the American College of Cardiology*, *50*(12), 1150–1157. <https://doi.org/10.1016/j.jacc.2007.04.095>
- Carroll, E. P., Janicki, J. S., Pick, R., & Weber, K. T. (1989). Myocardial stiffness and reparative fibrosis following coronary embolisation in the rat. *Cardiovascular Research*, *23*(8), 655–661. <https://doi.org/10.1093/cvr/23.8.655>
- Chugh, S. S., Reinier, K., Singh, T., Uy-Evanado, A., Socoteanu, C., Peters, D., Mariani, R., Gunson, K., & Jui, J. (2009). Determinants of prolonged QT interval and their contribution to sudden death risk in coronary artery disease: The Oregon Sudden Unexpected Death Study. *Circulation*, *119*(5), 663–670. <https://doi.org/10.1161/CIRCULATIONAHA.108.797035>
- Darouian, N., Aro, A. L., Narayanan, K., Uy-Evanado, A., Rusinaru, C., Reinier, K., Gunson, K., Jui, J., & Chugh, S. S. (2017). The Romhilt-Estes electrocardiographic score predicts sudden cardiac arrest independent of left ventricular mass and ejection fraction. *Annals of Noninvasive Electrocardiology*, *22*(4), e12424. <https://doi.org/10.1111/anec.12424>
- Darouian, N., Narayanan, K., Aro, A. L., Reinier, K., Uy-Evanado, A., Teodorescu, C., Gunson, K., Jui, J., & Chugh, S. S. (2016). Delayed intrinsic deflection of the QRS complex is associated with sudden cardiac arrest. *Heart Rhythm: the Official Journal of the Heart Rhythm Society*, *13*(4), 927–932. <https://doi.org/10.1016/j.hrthm.2015.12.022>
- Del-Carpio Munoz, F., Powell, B. D., Cha, Y. M., Wiste, H. J., Redfield, M. M., Friedman, P. A., & Asirvatham, S. J. (2013). Delayed intrinsic deflection onset in surface ECG lateral leads predicts left ventricular reverse remodeling after cardiac resynchronization therapy. *Heart Rhythm: the Official Journal of the Heart*

- Rhythm Society*, 10(7), 979–987. <https://doi.org/10.1016/j.hrthm.2013.03.045>
- Doering, C. W., Jalil, J. E., Janicki, J. S., Pick, R., Aghili, S., Abrahams, C., & Weber, K. T. (1988). Collagen network remodelling and diastolic stiffness of the rat left ventricle with pressure overload hypertrophy. *Cardiovascular Research*, 22(10), 686–695. <https://doi.org/10.1093/cvr/22.10.686>
- Estes, E. H., Zhang, Z. M., Li, Y., Tereschenko, L. G., & Soliman, E. Z. (2015). The Romhilt-Estes left ventricular hypertrophy score and its components predict all-cause mortality in the general population. *American Heart Journal*, 170(1), 104–109. <https://doi.org/10.1016/j.ahj.2015.04.004>
- Grubbschmidt, H. A., & Sokolow, M. (1957). The reliability of high voltage of the QRS complex as a diagnostic sign of left ventricular hypertrophy in adults. *American Heart Journal*, 54(5), 689–694. [https://doi.org/10.1016/0002-8703\(57\)90423-4](https://doi.org/10.1016/0002-8703(57)90423-4)
- Ilkhanoff, L., Liu, K., Ning, H., Nazarian, S., Bluemke, D. A., Soliman, E. Z., & Lloyd-Jones, D. M. (2012). Association of QRS duration with left ventricular structure and function and risk of heart failure in middle-aged and older adults: The Multi-Ethnic Study of Atherosclerosis (MESA). *European Journal of Heart Failure*, 14(11), 1285–1292. <https://doi.org/10.1093/eurjhf/hfs112>
- Jalil, J. E., Doering, C. W., Janicki, J. S., Pick, R., Clark, W. A., Abrahams, C., & Weber, K. T. (1988). Structural vs. contractile protein remodeling and myocardial stiffness in hypertrophied rat left ventricle. *Journal of Molecular and Cellular Cardiology*, 20(12), 1179–1187. [https://doi.org/10.1016/0022-2828\(88\)90597-4](https://doi.org/10.1016/0022-2828(88)90597-4)
- Jalil, J. E., Doering, C. W., Janicki, J. S., Pick, R., Shroff, S. G., & Weber, K. T. (1989). Fibrillar collagen and myocardial stiffness in the intact hypertrophied rat left ventricle. *Circulation Research*, 64(6), 1041–1050. <https://doi.org/10.1161/01.res.64.6.1041>
- Jalil, J. E., Janicki, J. S., Pick, R., Abrahams, C., & Weber, K. T. (1989). Fibrosis-induced reduction of endomyocardium in the rat after isoproterenol treatment. *Circulation Research*, 65(2), 258–264. <https://doi.org/10.1161/01.res.65.2.258>
- Kowey, P. R., Friechling, T. D., Sewter, J., Wu, Y., Sokil, A., Paul, J., & Nocella, J. (1991). Electrophysiological effects of left ventricular hypertrophy. Effect of calcium and potassium channel blockade. *Circulation*, 83(6), 2067–2075. <https://doi.org/10.1161/01.cir.83.6.2067>
- Macleod, A. G., Wilson, F. N., & Barker, P. S. (1930). The form of the electrocardiogram; intrinsic electrocardiographic deflections in animals and man. *Proceedings of the Society for Experimental Biology and Medicine*. 27(6), 586–587. <https://doi.org/10.3181/00379727-27-4868>
- McIntosh, M. A., Cobbe, S. M., Kane, K. A., & Rankin, A. C. (1998). Action potential prolongation and potassium currents in left-ventricular myocytes isolated from hypertrophied rabbit hearts. *Journal of Molecular and Cellular Cardiology*, 30(1), 43–53. <https://doi.org/10.1006/jmcc.1997.0570>
- Mewton, N., Liu, C. Y., Croisille, P., Bluemke, D., & Lima, J. A. (2011). Assessment of myocardial fibrosis with cardiovascular magnetic resonance. *Journal of the American College of Cardiology*, 57(8), 891–903. <https://doi.org/10.1016/j.jacc.2010.11.013>
- Moss, A. J., Zareba, W., Hall, W. J., Klein, H., Wilber, D. J., Cannom, D. S., Daubert, J. P., Higgins, S. L., Brown, M. W., & Andrews, M. L. (2002). Prophylactic implantation of a defibrillator in patients with myocardial infarction and reduced ejection fraction. *New England Journal of Medicine*, 346(12), 877–883. <https://doi.org/10.1056/NEJMoa013474>
- Noth, P. H., Myers, G. B., & Klein, H. A. (1947). The precordial electrocardiogram in left ventricular hypertrophy; a study of autopsied cases. *Proceedings of the Central Society for Clinical Research; Annual Meeting*, 20, 54.
- O'Neal, W. T., Mazur, M., Bertoni, A. G., Al-Mallah, M. H., Lima, J. A. C., Kitzman, D., & Soliman, E. Z. (2017). Electrocardiographic predictors of heart failure with reduced versus preserved ejection fraction: The multi-ethnic study of atherosclerosis. *Journal of the American Heart Association*, 6(6). <https://doi.org/10.1161/JAHA.117.006023>
- O'Neal, W. T., Qureshi, W. T., Nazarian, S., Kawel-Boehm, N., Bluemke, D. A., Lima, J. A. C., & Soliman, E. Z. (2016). Electrocardiographic time to intrinsic deflection and heart failure: The multi-ethnic study of atherosclerosis. *Clinical Cardiology*, 39(9), 531–536. <https://doi.org/10.1002/clc.22561>
- Perez-Riera, A. R., de Abreu, L. C., Barbosa-Barros, R., Nikus, K. C., & Baranchuk, A. (2016). R-Peak Time: An electrocardiographic parameter with multiple clinical applications. *Annals of Noninvasive Electrocardiology*, 21(1), 10–19. <https://doi.org/10.1111/anec.12323>
- Peters, N. S., Green, C. R., Poole-Wilson, P. A., & Severs, N. J. (1993). Reduced content of connexin43 gap junctions in ventricular myocardium from hypertrophied and ischemic human hearts. *Circulation*, 88(3), 864–875. <https://doi.org/10.1161/01.cir.88.3.864>
- Pick, R., Janicki, J. S., & Weber, K. T. (1989). Myocardial fibrosis in nonhuman primate with pressure overload hypertrophy. *American Journal of Pathology*, 135(5), 771–781.
- Prinzen, F. W., Vernooy, K., & Auricchio, A. (2013). Cardiac resynchronization therapy: State-of-the-art of current applications, guidelines, ongoing trials, and areas of controversy. *Circulation*, 128(22), 2407–2418. <https://doi.org/10.1161/CIRCULATIONAHA.112.000112>
- Romhilt, D. W., Bove, K. E., Norris, R. J., Conyers, E., Conradi, S., Rowlands, D. T., & Scott, R. C. (1969). A critical appraisal of the electrocardiographic criteria for the diagnosis of left ventricular hypertrophy. *Circulation*, 40(2), 185–196. <https://doi.org/10.1161/01.cir.40.2.185>
- Romhilt, D. W., & Estes, E. H. Jr (1968). A point-score system for the ECG diagnosis of left ventricular hypertrophy. *American Heart Journal*, 75(6), 752–758. [https://doi.org/10.1016/0002-8703\(68\)90035-5](https://doi.org/10.1016/0002-8703(68)90035-5)
- Ryder, K. O., Bryant, S. M., & Hart, G. (1993). Membrane current changes in left ventricular myocytes isolated from guinea pigs after abdominal aortic coarctation. *Cardiovascular Research*, 27(7), 1278–1287. <https://doi.org/10.1093/cvr/27.7.1278>
- Ryder, K., Bryant, S., & Winterton, S. (1991). Electrical and mechanical characteristics of isolated ventricular myocytes from guinea-pigs with left ventricular hypertrophy and congestive heart failure. *The Journal of Physiology*, 438, 181.
- Silver, M. A., Pick, R., Brilla, C. G., Jalil, J. E., Janicki, J. S., & Weber, K. T. (1990). Reactive and reparative fibrillar collagen remodelling in the hypertrophied rat left ventricle: Two experimental models of myocardial fibrosis. *Cardiovascular Research*, 24(9), 741–747. <https://doi.org/10.1093/cvr/24.9.741>
- Sipahi, I., Carrigan, T. P., Rowland, D. Y., Stambler, B. S., & Fang, J. C. (2011). Impact of QRS duration on clinical event reduction with cardiac resynchronization therapy: Meta-analysis of randomized controlled trials. *Archives of Internal Medicine*, 171(16), 1454–1462. <https://doi.org/10.1001/archinternmed.2011.247>
- Sokolow, M., & Lyon, T. P. (1949). The ventricular complex in left ventricular hypertrophy as obtained by unipolar precordial and limb leads. *American Heart Journal*, 37(2), 161–186. [https://doi.org/10.1016/0002-8703\(49\)90562-1](https://doi.org/10.1016/0002-8703(49)90562-1)
- Spragg, D. D., & Tomaselli, G. F. (2018). Principles of electrophysiology. In J. L. Jameson, A. S. Fauci, D. L. Kasper, S. L. Hauser, D. L. Longo, & J. Loscalzo (Eds.), *Harrison's Principles of internal medicine*, 20e20 McGraw-Hill Education.
- Stanfield, C. L. (2017). *Principles of human physiology* (6th ed.). Pearson; 2017:xviii, 782 pages.
- Stecker, E. C., Reinier, K., Marijon, E., Narayanan, K., Teodorescu, C., Uy-Evanado, A., Gunson, K., Jui, J., & Chugh, S. S. (2014). Public health burden of sudden cardiac death in the United States. *Circulation: Arrhythmia and Electrophysiology*, 7(2), 212–217. <https://doi.org/10.1161/CIRCEP.113.001034>
- Stecker, E. C., Vickers, C., Waltz, J., Socoteanu, C., John, B. T., Mariani, R., McAnulty, J. H., Gunson, K., Jui, J., & Chugh, S. S. (2006).

- Population-based analysis of sudden cardiac death with and without left ventricular systolic dysfunction: Two-year findings from the Oregon Sudden Unexpected Death Study. *Journal of the American College of Cardiology*, 47(6), 1161–1166. <https://doi.org/10.1016/j.jacc.2005.11.045>
- Straus, S. M., Kors, J. A., De Bruin, M. L., van der Hooft, C. S., Hofman, A., Heeringa, J., Deckers, J. W., Kingma, J. H., Sturkenboom, M. C. J. M., Stricker, B. H. C., & Witteman, J. C. M. (2006). Prolonged QTc interval and risk of sudden cardiac death in a population of older adults. *Journal of the American College of Cardiology*, 47(2), 362–367. <https://doi.org/10.1016/j.jacc.2005.08.067>
- Teodorescu, C., Reinier, K., Uy-Evanado, A., Navarro, J. O., Mariani, R., Gunson, K., Jui, J., & Chugh, S. S. (2011). Prolonged QRS duration on the resting ECG is associated with sudden death risk in coronary disease, independent of prolonged ventricular repolarization. *Heart Rhythm: the Official Journal of the Heart Rhythm Society*, 8(10), 1562–1567. <https://doi.org/10.1016/j.hrthm.2011.06.011>
- Tracy, C. M., Epstein, A. E., Darbar, D., DiMarco, J. P., Dunbar, S. B., Estes III, N. A. M., Ferguson Jr, T. B., Hammill, S. C., Karasik, P. E., Link, M. S., Marine, J. E., Schoenfeld, M. H., Shanker, A. J., Silka, M. J., Stevenson, L. W., Stevenson, W.G., & Varosy, P. D. (2013). 2012 ACCF/AHA/HRS focused update incorporated into the ACCF/AHA/HRS 2008 guidelines for device-based therapy of cardiac rhythm abnormalities: A report of the American College of Cardiology Foundation/American Heart Association Task Force on Practice Guidelines and the Heart Rhythm Society. *Journal of the American College of Cardiology*, 61(3), e6–e75. <https://doi.org/10.1016/j.jacc.2012.11.007>
- Virani, S. S., Alonso, A., Benjamin, E. J., Bittencourt, M. S., Callaway, C. W., Carson, A. P., Chamberlain, A. M., Chang, A. R., Cheng, S., Delling, F. N., Djousse, L., Elkind, M. S. V., Ferguson, J. F., Fornage, M., Khan, S. S., Kissela, B. M., Knutson, K. L., Kwan, T. W., Lackland, D. T.,... Tsao, C. W. (2020). Heart Disease and Stroke Statistics-2020 Update: A report from the American Heart Association. *Circulation*, 141(9), e139–e596. <https://doi.org/10.1161/CIR.0000000000000757>
- Weber, K. T., Janicki, J. S., Pick, R., Abrahams, C., Shroff, S. G., Bashey, R. I., & Chen, R. M. (1987). Collagen in the hypertrophied, pressure-overloaded myocardium. *Circulation*, 75(1 Pt 2), I40–I47.
- Weber, K. T., Janicki, J. S., Pick, R., Capasso, J., & Anversa, P. (1990). Myocardial fibrosis and pathologic hypertrophy in the rat with renovascular hypertension. *American Journal of Cardiology*, 65(14), 1–7. [https://doi.org/10.1016/0002-9149\(90\)90952-w](https://doi.org/10.1016/0002-9149(90)90952-w)
- Weber, K. T., Janicki, J. S., Shroff, S. G., Pick, R., Chen, R. M., & Bashey, R. I. (1988). Collagen remodeling of the pressure-overloaded, hypertrophied nonhuman primate myocardium. *Circulation Research*, 62(4), 757–765. <https://doi.org/10.1161/01.res.62.4.757>
- Wiegerinck, R. F., Verkerk, A. O., Belterman, C. N., van Veen, T. A. B., Baartscheer, A., Opthof, T., Wilders, R., de Bakker, J. M. T., & Coronel, R. (2006). Larger cell size in rabbits with heart failure increases myocardial conduction velocity and QRS duration. *Circulation*, 113(6), 806–813. <https://doi.org/10.1161/CIRCULATIONAHA.105.565804>
- Wolk, R. (2000). Arrhythmogenic mechanisms in left ventricular hypertrophy. *Europace*, 2(3), 216–223. <https://doi.org/10.1053/eupc.2000.0110>
- Zhang, Z. M., Rautaharju, P. M., Prineas, R. J., Loehr, L., Rosamond, W., & Soliman, E. Z. (2015). Ventricular conduction defects and the risk of incident heart failure in the Atherosclerosis Risk in Communities (ARIC) Study. *Journal of Cardiac Failure*, 21(4), 307–312. <https://doi.org/10.1016/j.cardfail.2015.01.001>

How to cite this article: Aiken, A. V., Goldhaber, J. I., & Chugh, S. S. (2022). Delayed intrinsicoid deflection: Electrocardiographic harbinger of heart disease. *Annals of Noninvasive Electrocardiology*, 27, e12940. <https://doi.org/10.1111/anec.12940>