

Correction: Vascular endothelial tight junctions and barrier function are disrupted by 15(S)-hydroxyecosatetraenoic acid partly via protein kinase C ϵ -mediated zona occludens-1 phosphorylation at threonine 770/772.

Rima Chattopadhyay, Elena Dyukova, Nikhlesh K. Singh, Motoi Ohba, James A. Mobley, and Gadiparthi N. Rao

In Fig. 2E, the images of control and 15(S)-HETE treatments (5 min and 120 min) were duplicated. Similarly, in Fig. 3E, in the control group, the rZO-1 (WT) and rZO-1 (T770A/T772A) images were duplicated. These duplications occurred while capturing the images from a group of slides in the dark, and they were amended by replacing with the correct images. This correction does not change the results or conclusions of this work.

Figure 2E

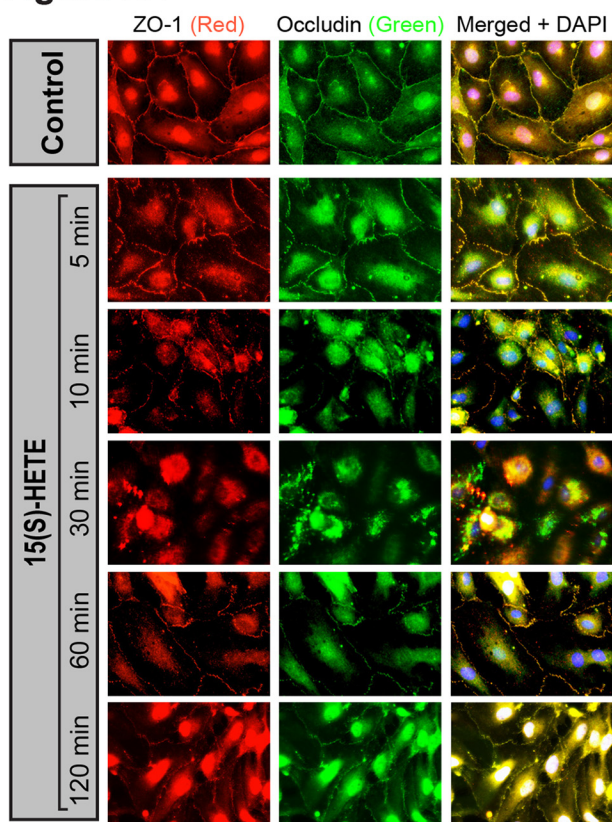
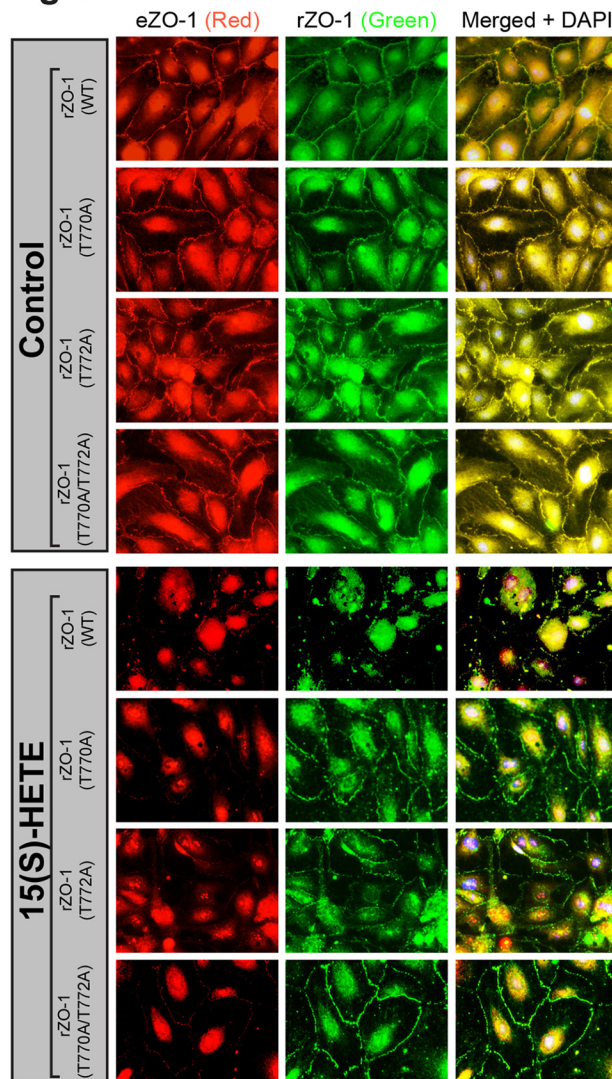


Figure 3E



Figures 2E and 3E.