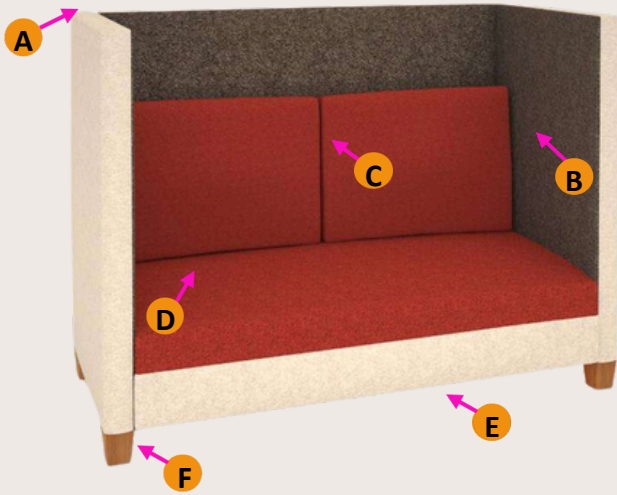


# Acousit







A 'High back for privacy

B 'Acoustic external frame

C 'Soft back cushions

D 'Fixed seat cushion for commercial use

E 'Elevated base

F '4 leg 25 x 25mm metal tube in Black Epoxy powder coat or optional Solid wood finished in Walnut or Old English stain



#### Single

Dimensions Overall : 81cm W x 81cm D x 120cm H  
Seat Depth: 53cm Seat Height: 45cm Back cushion: 45cm H



#### Double

Dimensions Overall : 160cm W x 81cm D x 120cm H  
Seat Depth: 53cm Seat Height: 45cm Back cushion: 45cm H



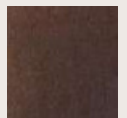
#### Three seat

Dimensions Overall : 210cm W x 81cm D x 120cm H  
Seat Depth: 53cm Seat Height: 45cm Back cushion: 45cm H

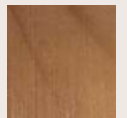
Leg finish:



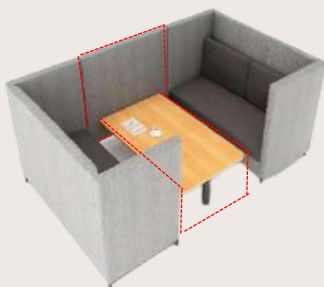
25mm x 25mm tube  
Black epoxy  
Powder coat



Solid timber  
Walnut stain



Solid timber  
Old English stain



#### ACOUSIT BOOTH

**AS SCREEN :** (Connects to 2 x 1,2,3)

900mm Wide section

**AS TABLE :**  
(STD White melamine, 200mm radius corners and round post leg in Black)

2 person  
4 person  
6 person

#### Options :

Castors  
Integrated power  
Battery power

