

Abbildung 27 Die Westfassade der Kirche des Sint Elisabeth-Begijnenhof in Gent., aus: Bouwen door de eeuwen heen, Inventaris van het cultuurbezit in België. Architectuur. Deel 4nb Stad Gent. Zuid-West, Ministerie van Nationale Opvoeding en Nederlandse Cultuur, Gent 1979, Abb. III, Ansicht Westfassade nach R. Van Driessche, S. 28.



Abbildung 28 (Gent, K5) Innenraum der Kirche des Sint Elisabeth-Begijnenhof in Gent, aus: Bouwen door de eeuwen heen, Inventaris van het cultuurbezit in België. Architectuur. Deel 4nb Stad Gent. Zuid-West, Ministerie van Nationale Opvoeding en Nederlandse Cultuur, Gent 1979, Abb. 15, S. 30.

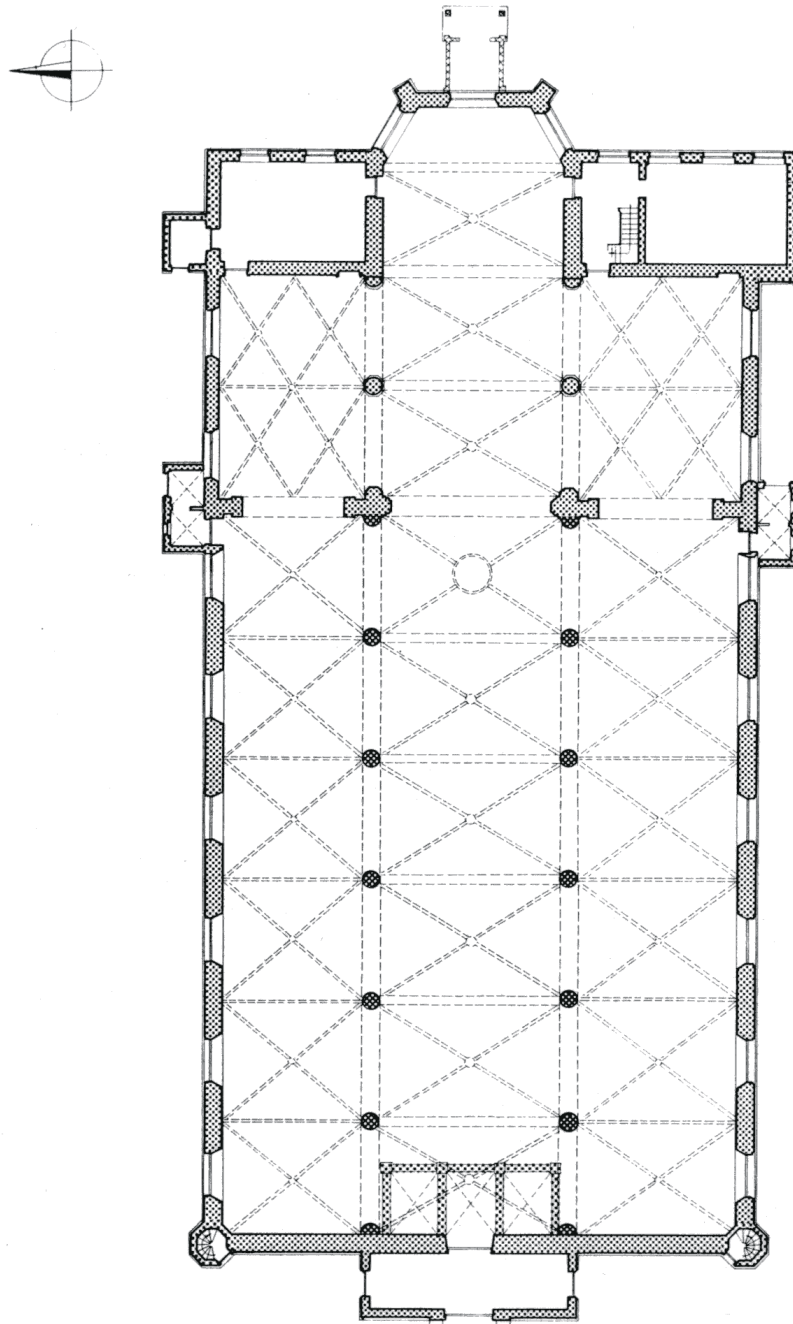


Abbildung 29 (Gent, K5) Grundriss der Kirche des Sint Elisabeth-Begijnenhof in Gent, aus: Bouwen door de eeuwen heen, Inventaris van het cultuurbezit in België. Architectuur. Deel 4nb Stad Gent. Zuid-West, Ministerie van Nationale Opvoeding en Nederlandse Cultuur, Gent 1979, Abb. II, Grundriss nach R. Van Driessche, S. 26.

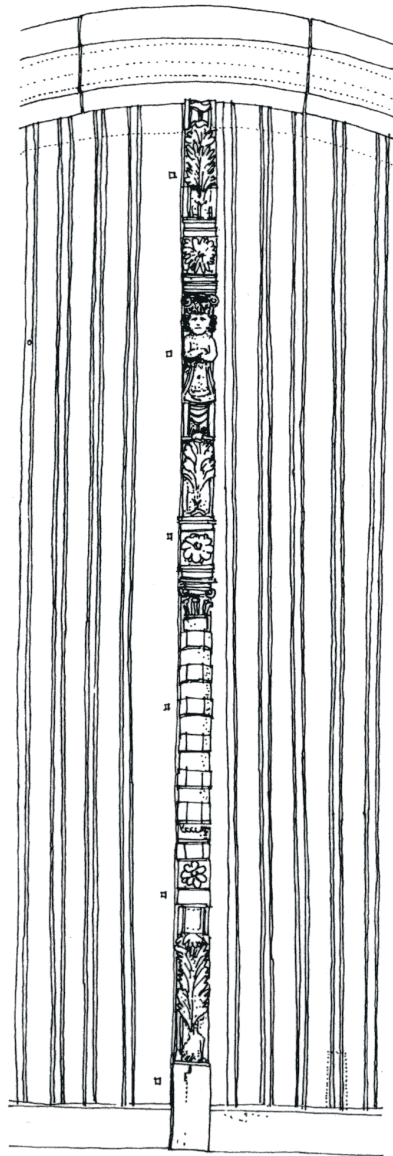


Abbildung 30 (Gent, K5) Detailzeichnung der Eingangstür der Kirche, Sint Elisabeth-Beginenhof Gent, aus: Bouwen door de eeuwen heen, Inventaris van het cultuurbezit in België. Architectuur. Deel 4nb Stad Gent. Zuid-West, Ministerie van Nationale Opvoeding en Nederlandse Cultuur, Gent 1979, Zeichnung S. 29.



Abbildung 31 (Gent, K5) Eingangsportal der Kirche des Sint Elisabeth-Beginenhof in Gent.



Abbildung 32 (Gent, K5) Blick auf die Kirche des Sint Elisabeth-Beginenhof in Gent.

THE OLD BÉGUINAGE AT GHENT

THE Municipality of Ghent appear to be rather iconoclastic in their views, for within the last thirty years they have destroyed the great Dominican Church in Ghent, one of the noblest and most valuable examples of Gothic architecture in the whole of Belgium, a building celebrated all over Europe as being the most perfect example in existence of an immense mediæval church without either aisles or pillars, and now they are pulling down the ancient Béguinage for the purpose of making a new street.

The old Béguinage consists, or did consist, of a number of streets, an open square, and a church, all enclosed by a wall, with picturesque gates. It was inhabited by a religious order, or rather congregation of women, who lived in separate houses, and attended the sick, taught schools, &c. The Béguines are not exactly nuns, because they can leave the order when they please, and are only bound by vows as long as they remain in the community. Many noble ladies belong to this order, which is greatly respected, especially by the poor in Belgium. Our view represents the church part of the buildings, and the great square or courtyard of the series of buildings, and is from a sketch by George Goldie, Esq., M.R.I.B.A., taken two years ago. A new Béguinage has been erected at Ghent, which was taken possession of by the Sisters about three months ago.

The Graphic 14 Nov. 1874

THE G



THE OLD BÉGUINAGE AT GHENT
NOW IN COURSE OF DESTRUCTION



Abbildung 33 (Gent, K5) Apsis der Kirche des Sint Elisabeth-Beginenhof in Gent. Die im 19. Jh. versetzte und an die Apsis angebaute Ecce-Homo-Kapelle ist deutlich erkennbar, Quelle: Stadsarchief Gent Fototheek L60/15c.

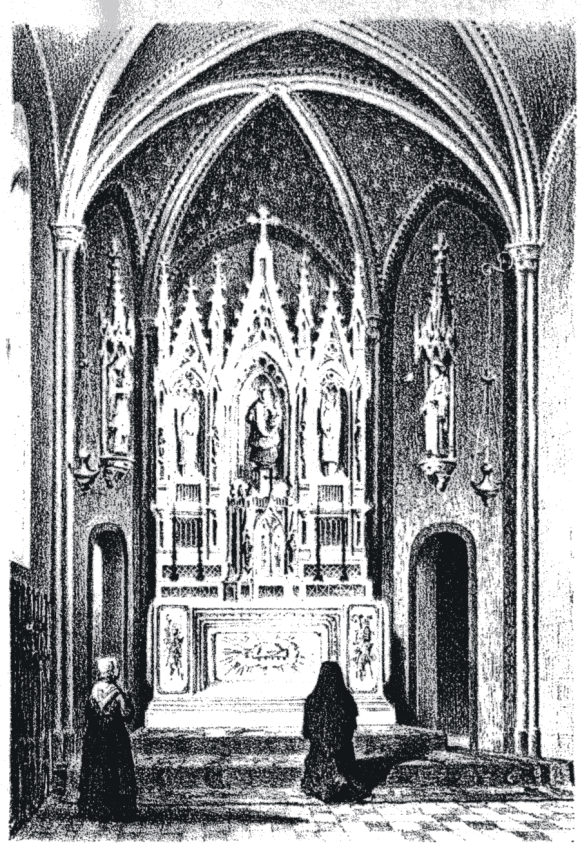
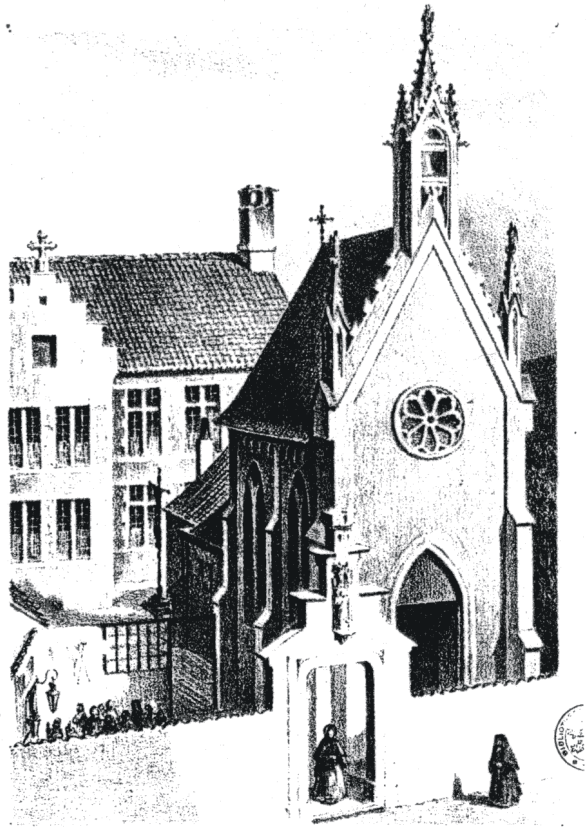


Abbildung 34 (Gent, K5) Die St. Antoniuskapelle des Sint Elisabeth-Beginenhof in Gent, Kopie aus Atlas Goethghebuer, Lithographie von 1858, Stadsarchief Gent Fototheek L60/12b und 12c.



Abbildung 35 (Gent, K5) Plan des Sint Elisabeth-Beginenhof Gent. Dunkel hervorgehoben sind die Konventsgebäude, Quelle: Stadsarchief Gent Fototheek Gent Fototheek, L60/1.

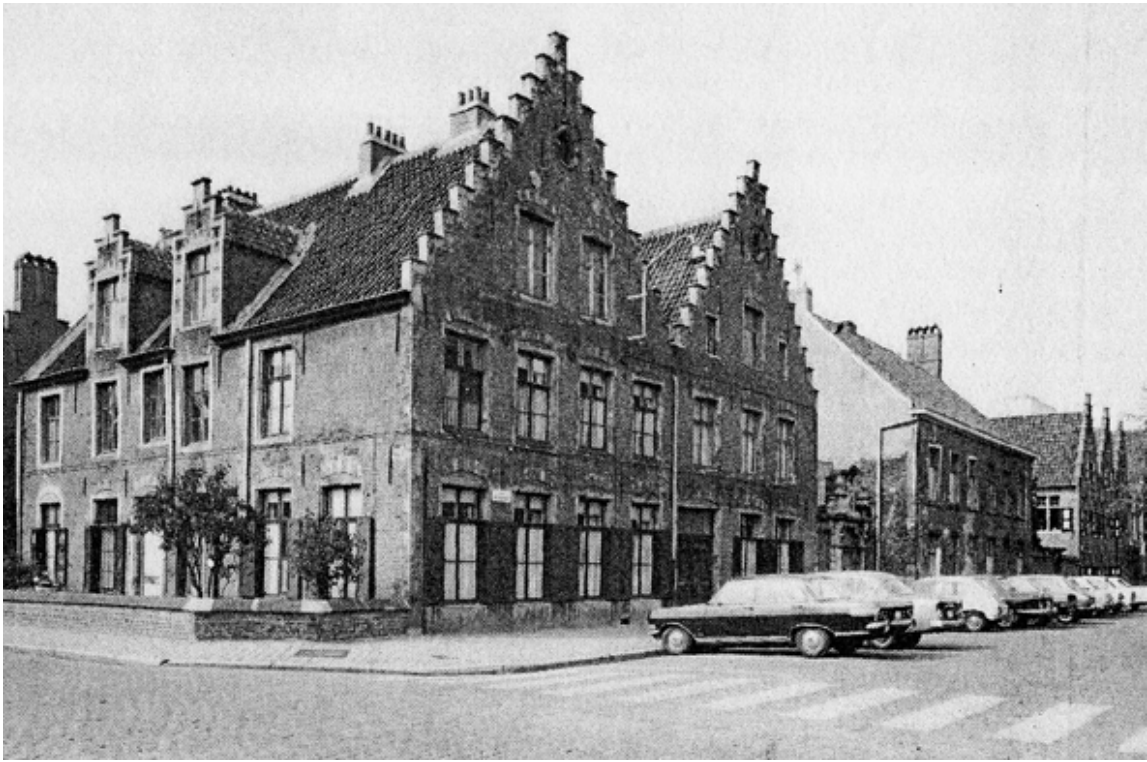


Abbildung 36 (Gent, K5) Der Konvent Ter Velde, Sint Elisabeth-Beginenhof Gent, 1664 erbaut, aus: Bouwen door de eeuwen heen, Inventaris van het cultuurbezit in België. Architectuur. Deel 4nb Stad Gent. Zuid-West, Ministerie van Nationale Opvoeding en Nederlandse Cultuur, Gent 1979, Abb. 16, S. 33.

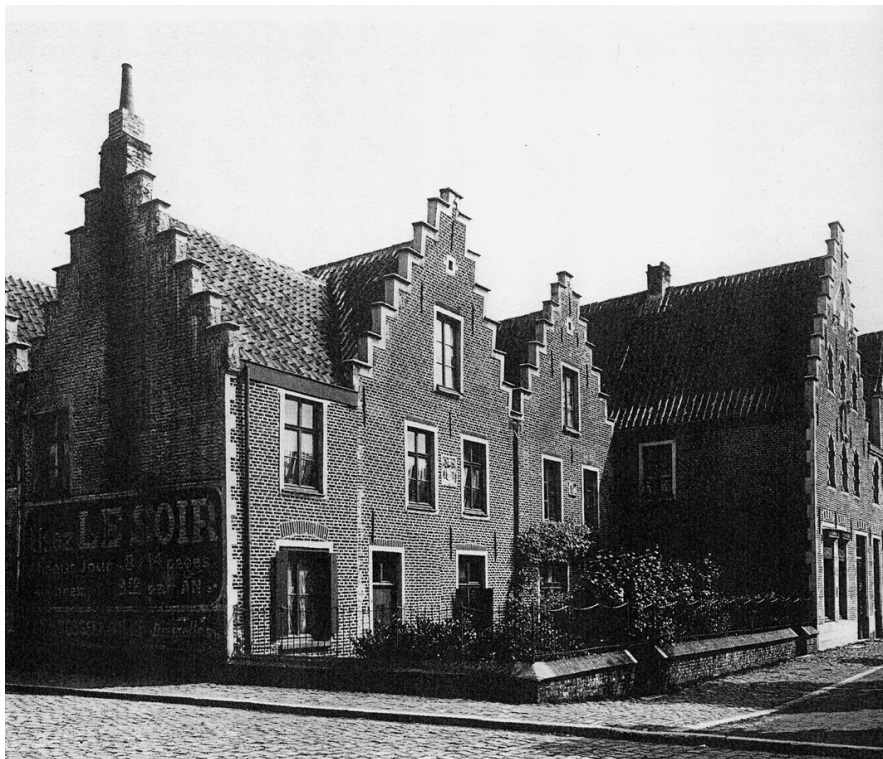


Abbildung 37 (Gent, K5) Konvent Ter Sternen, Sint Elisabeth-Begijnenhof Gent, aus: Werken en Kerken, 750 Jaar Begijnhofleven te Gent, Ausstellungskatalog Bijlokemuseum 29.9.-25.11.1984, Gent, S. 78.



Abbildung 38 (Gent, K5) Konvent Te Pielvaecx, Sint Elisabeth-Begijnenhof Gent, aus: Werken en Kerken, 750 Jaar Begijnhofleven te Gent, Ausstellungskatalog Bijlokemuseum 29.9.-25.11.1984, Gent, S. 91.



Abbildung 39 (Gent, K5) Konvent Te Pielvaecx, Zustand 1999.