

Supplementary material for LHCb-PAPER-2021-001

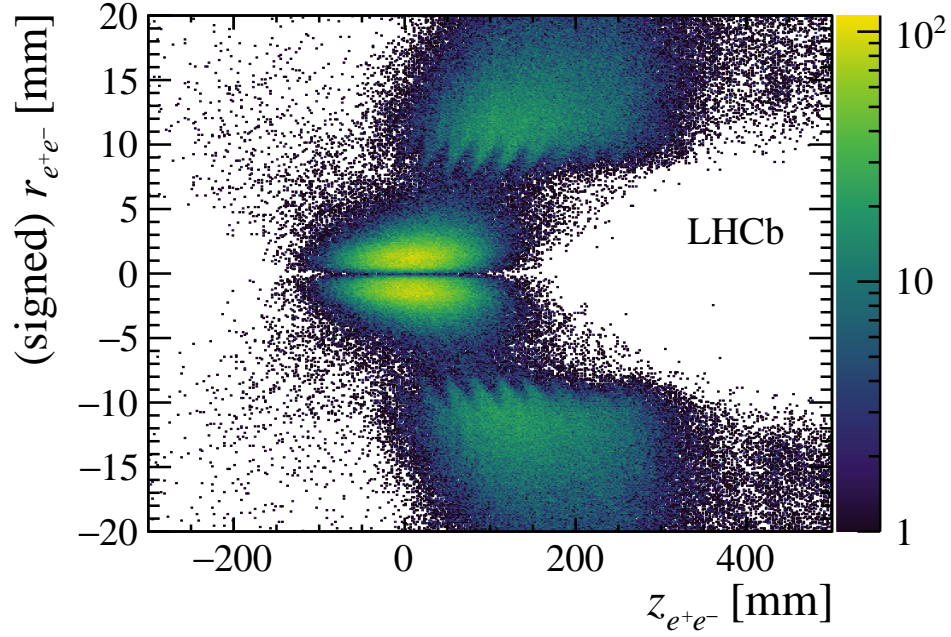


Figure 1: Distribution of e^+e^- vertices in $D^+ \rightarrow \pi^+\eta$ candidates in the rz plane integrated over the azimuthal angle, where a positive (negative) value of r denotes a vertex with $x > 0$ ($x < 0$). The coordinate system is defined such that z is along the beam axis, with positive z denoting the direction from the pp -interaction point into the LHCb detector; y is vertical upwards; and x is horizontal and defined such that the coordinate system is right handed. The contributions from three-body $\eta \rightarrow e^+e^-\gamma$ decays form the two regions in the centre, whilst $\eta \rightarrow \gamma\gamma$ decays followed by a photon conversion form regions at larger $|r_{e^+e^-}|$ where the material surrounding the pp interaction point is located.

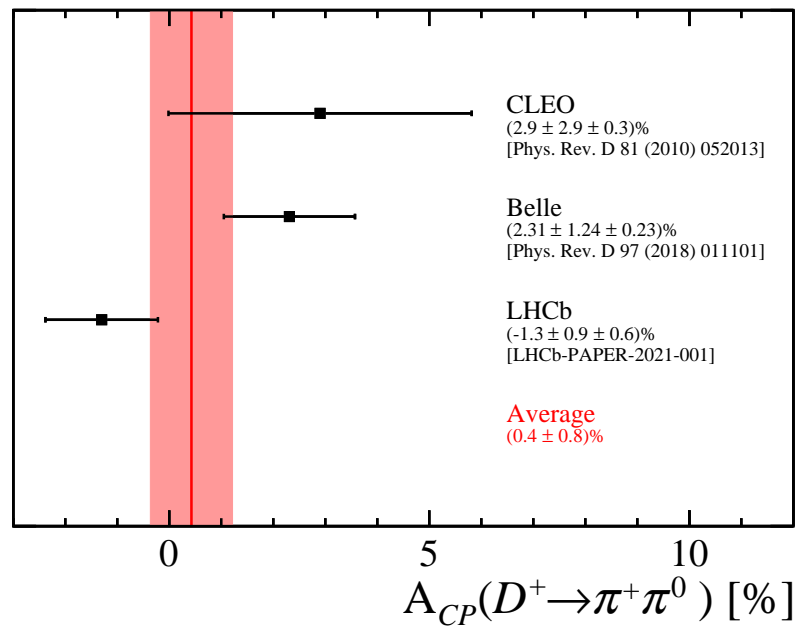


Figure 2: Compilation of different measurements of $A_{CP}(D^+ \rightarrow \pi^+ \pi^0)$, along with a weighted average of the listed results.