

PLOS Medicine

Manuscript Guidelines

Please refer to this checklist before resubmitting your article to ensure you have met all of *PLOS Medicine's* formatting requirements.

Contents

Submission Form	2
Main Article File	2
References.....	3
Figures, Tables, and Boxes.....	3
Supporting Information	4

Email: plosmedicine@plos.org

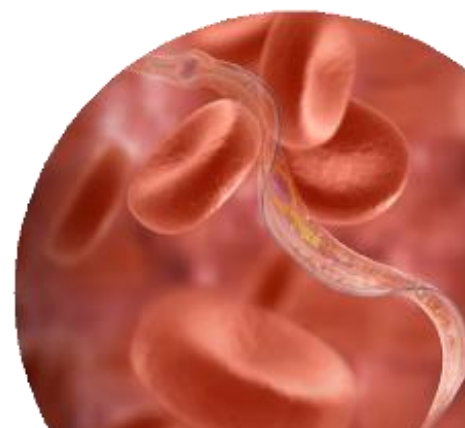
Image Credits

Page 1: Dirceu Teixeira. 10.1371/journal.pntd.0001749

Page 2: James Gathany, Center for Disease Control.

Page 3: WHO/TDR/Andy Craggs

Page 4: National Institute of Allergy and Infectious Diseases



Submission Form

- Please ensure the following sections in the submission form are written in full sentences and include all requested information and standard text as indicated. The following sections will be typeset exactly as they appear in the submission form:
 - **Competing Interests**
 - **Data Availability**
 - **Financial Disclosure**
 - Include grant numbers and URLs as appropriate, and indicate which author received the grant(s) using their initials.
 - **Author Contributions**

Note: Co-authors will receive an email from the journal office requesting that they confirm authorship of the paper and provide information on any relevant competing interests – **all authorship/competing interest confirmations must be received before a manuscript can be considered in press.**

- Everyone who meets our [criteria for authorship](#) must be listed as an author. In cases of group authorship, members of contributing groups that *do not* qualify for individual authorship should be mentioned in the Acknowledgements section.

Note: We will need to know the main contact for the group (if different to the corresponding author), and receive confirmation they have been notified of the submission.

Main Article File

- Manuscript files must be uploaded as either a .doc, .docx or .rtf file.
- Please ensure that all authors have at least one affiliation listed on the title page and that all listed affiliations are attributed to at least one author.
- All author names need to match between the article file and our submission form, including middle names and any special characters such as accents, umlauts, etc.

Note: Any middle initials will also need to be included in the author contributions.
- All display equations need to be in an editable format using either Math Type or Microsoft Equation. Do not insert equations as pictures.
- The Acknowledgement section is meant only for statements of gratitude or dedication as it relates specifically to the paper. Please do not include any text relating to funding,



data or conflicts of interest and move any relevant information to the appropriate section of the submission form. Please do not thank anonymous reviewers or editors.

Note: Any necessary disclaimers should be included in the Acknowledgments section with a line break between the main text of the Acknowledgements and the disclaimer statement.

- ❑ PLOS does not publish any statements supported by “data not shown” citations. Data will need to be provided for any instances of these citations, or they will need to be removed from the manuscript.

References

- ❑ All references included in the reference list must be cited within the main text, in ascending numerical order upon first appearance.
- ❑ Citations need to be within [square brackets] and separated by either commas or dashes with no spaces, e.g. [1,2,3] or [1-3]
- ❑ Please ensure that your reference list conforms to the PLOS style. See [here](#) for guidelines and a downloadable EndNote style file.

Figures, Tables, and Boxes

- ❑ All figures will be published under our [CC BY licence](#). As such, any images not produced by the authors will require specific confirmation from the creator(s) that they allow their images to publish under this licence.
- ❑ Ensure your figures meet our [figure guidelines](#).
- ❑ All main figures must be uploaded separately as either .tif or .eps files.
- ❑ Main figures, tables, and boxes must be cited within the main body of the manuscript in ascending numerical order.
- ❑ Tables and boxes cannot contain images, and all main tables must be in an editable grid format
- ❑ In-text figure citations must follow the format “Fig 1”, “Fig 2” verbatim, including spelling, capitalization and without punctuation.



Note: Uploaded figures must use the following example format for file names: Fig1.tif, Fig2.eps, etc.

- Main figure legends are to be placed after the paragraph containing their first in-text citation.

Note: Main tables and boxes must also be placed after their first in-text citation, however all supporting information legends are to be placed after the references.

Supporting Information

Supporting Information files are not copyedited and will be published as they are submitted. Therefore, please ensure that these files are legible and of high quality (at least 300 dpi) in an easily accessible file format. For more information, see our [Supporting Information guidelines](#).

- Any supporting information files that you intend to be published with the manuscript should be uploaded as the “Supporting Information” file type. “Other” or “Related Manuscript” file types are not published.
Note: When relevant, protocols and completed checklists (e.g. STROBE, PRISMA) will need to be uploaded as Supporting Information.

- Uploaded supporting information must use the following example format for file names:
 - S1_Fig.tif, S2_Fig.tif, S1_Table.xlsx, S1_Text.doc, S1_Data.xlsx

- Within the main text of the manuscript, supporting information must be cited using the following example format (including spelling and capitalization):
 - S1 Fig, S1 Table, S1 Text, S1 Data, etc.

- When citing supporting information within your main manuscript, please cite specific files, e.g. “see S1 Text” rather than “see supplementary information”.

- Each supporting file must have a corresponding legend. These should only be included at the end of the manuscript, after the References section, and not within any of the supporting files themselves.

Note: References included in these legends should be added to the main reference list.

- Each supporting information file is self-contained. Therefore, any references cited *within* a supporting information file must be included in a self-contained reference list within the same supporting file, starting at reference [1].

Note: Any references listed in a supporting information file will not be indexed.

