



Import bookmarks...



www.cern.ch



Prometheus Long Term Metrics Storage With Thanos

Roberto Valverde
CERN IT - Storage and Data Management
EOS WORKSHOP - 15/03/2024



Prometheus

- In Storage and Data Management group we rely on prometheus for many services:
 - Ceph, EOS, cback...
- Pull-based, time-series data model
- PromQL query language: `count by(cluster, eos_version)(eos_node_info)`
- Central server that **scrapes** targets, called **exporters**
 - There is an exporter for that! [exporters](#)
 - And there is also an EOS exporter!

EOS EXPORTER

- https://github.com/cern-eos/eos_exporter
- Developed/maintained/Used by EOS CERN Operators
 - 8 releases last year.
- Agnostic (we try)
- More info [EOS Workshop 2023](#)

Problem/Motivation:

- Prometheus is very good for live metrics, short-term retention
- In storage services, long-term metrics is desirable:
 - Capacity planning
 - Historical evolution of services
- We need a long-term metric storage solution

Thanos

Open source, highly available Prometheus setup with long term storage capabilities.

- Used extensively around prometheus community (many cross-service contributors)
- Integrates seamlessly into an existing prometheus server environment.
- Thanos will send this metrics indefinitely in S3. Thanos will also compact, create downsampled versions (5m, 1h) and serve this metrics using a Prometheus-compatible API.

Thanos

- 1 binary (Golang), stateless. Four main roles:
 - **Thanos-sidecar**: Prometheus server companion, send metrics to S3 everytime prometheus flushes the metrics to disk (by default, every 2h). Exposes API for accessing metrics still on memory.
 - **Thanos-store**: S3 Storage gateway.
 - **Thanos-query**: Endpoint used as datasource in Grafana, process queries reading metrics from `thanos-store` and `thanos-sidecar` endpoints.
 - **Thanos-compact**: Compacts TSDB blocks and creates downsampled versions of the metrics stored in the S3 bucket.

Cold or Hot?

- Thanos creates **additional** downsampled versions of the RAW metrics.
- RAW metrics are always kept by default, allowing to **zoom-in** into the original resolution at any time.
- Grafana will choose use the adequate downsampling according to the chosen interval.



Screenshot 2024-0...2.35.png

thanos4.gif

Screenshot 2024-0...8.19.png

Screenshot 2024-0...11.32.png

Screenshot 2024-0...11.51.png

Screen Recording 2024-0...3.34.mov

Screen Recording 2024-0...6.08.mov

thanos.mov

thanos.gif

thanos2.gif

Start call

client_id: 356566590

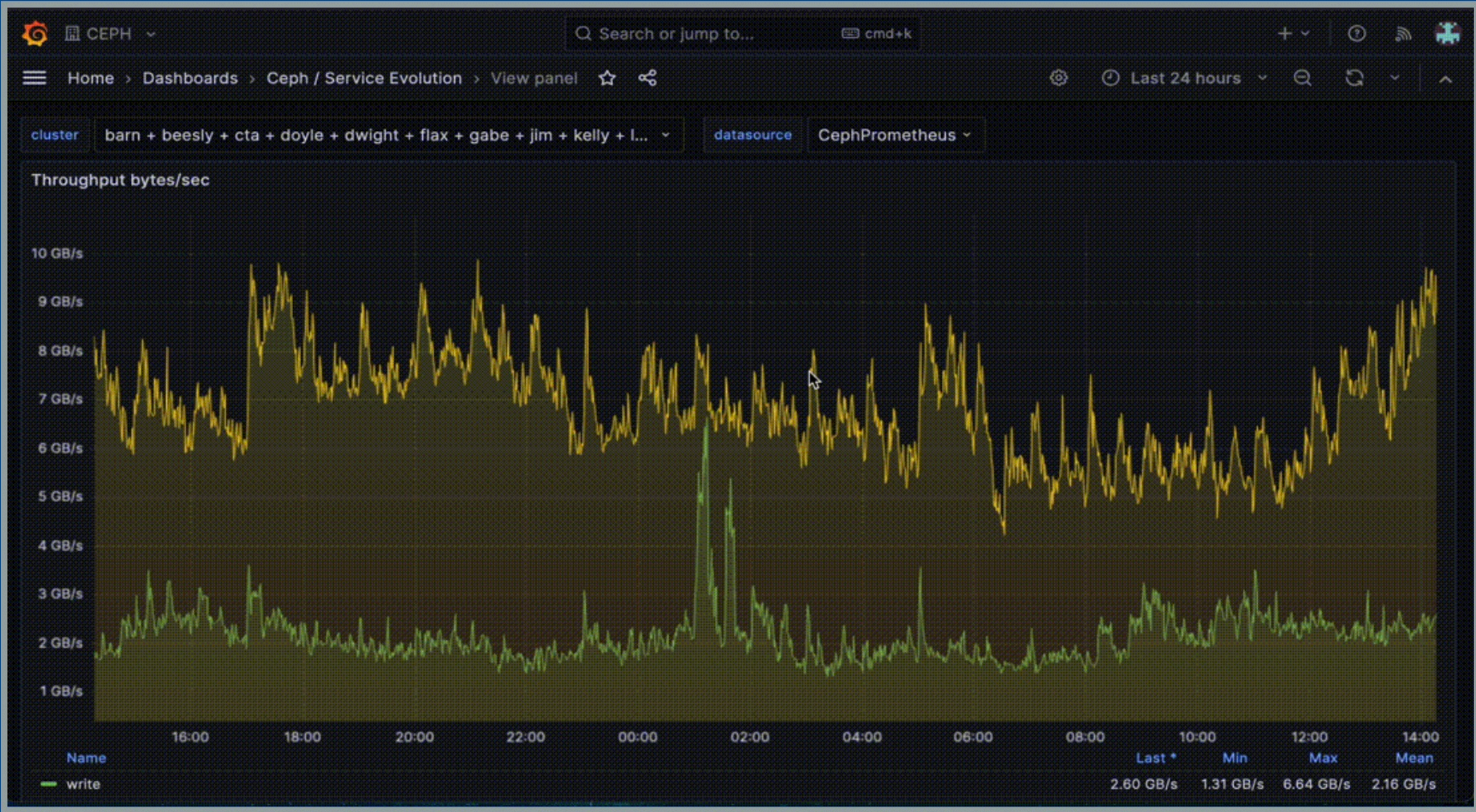
Thanos

- Binary (Docker) version: Four main roles
- **Thanos-scheduler**: Prometheus server companion, used to schedule the Thanos queriers to disk by default, every 20s. Exposes an API to manage metrics still on memory.
- **Thanos-store**: Prometheus server companion, used to store metrics in object storage.
- **Thanos-querier**: Prometheus server companion, used to query metrics from Thanos-store and Thanos-scheduler endpoints.
- **Thanos-computer**: Compacts 100 blocks and creates downsampled versions of the metrics stored in the 10 blocks.

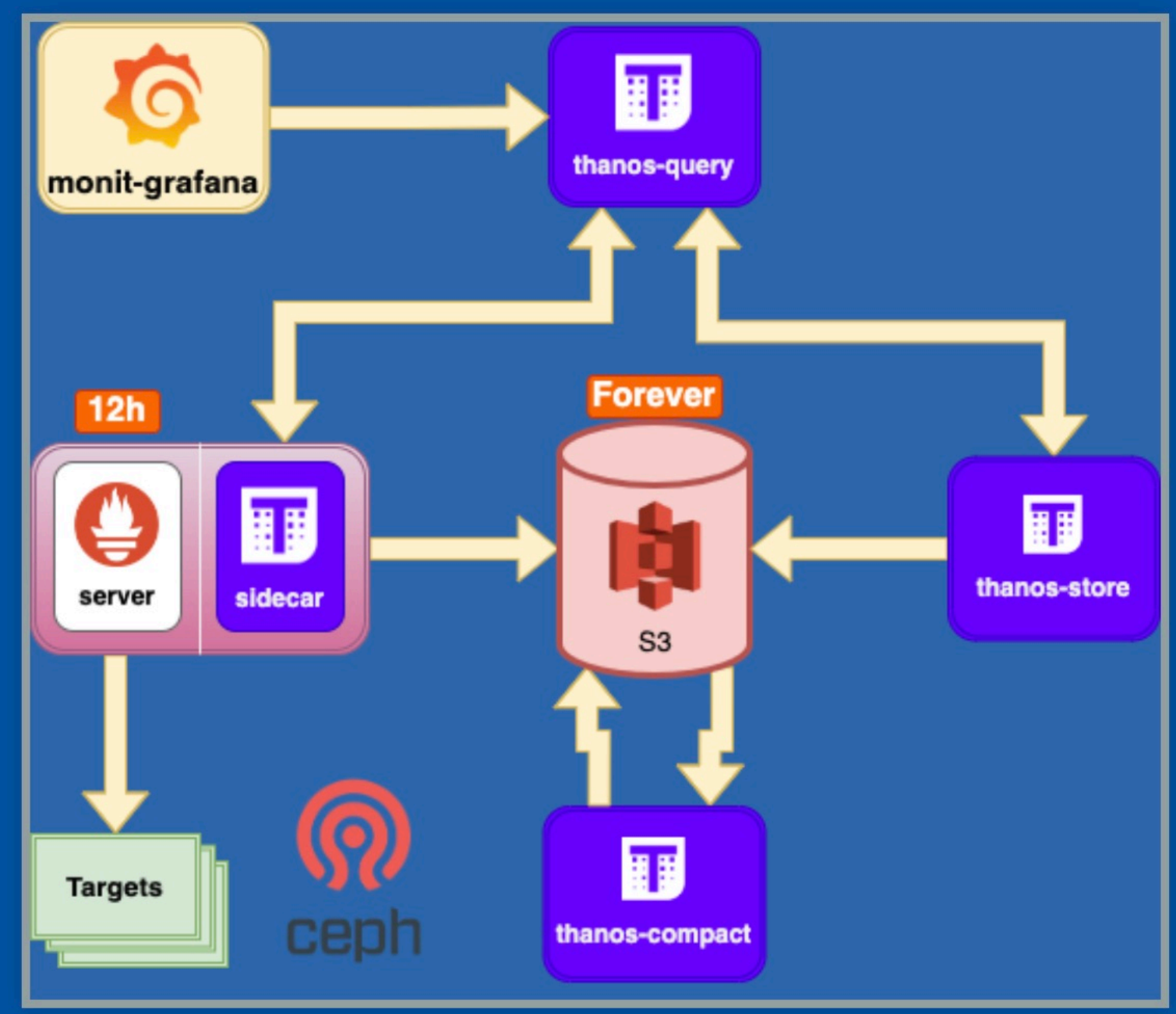
Cold or Hot?

- Thanos creates **additional** downsampled versions of the RAW metrics.
- RAW metrics are always kept by default, allowing to **zoom-in** into the original resolution at any time.
- Grafana will choose use the adequate downsampling according to the chosen interval.

Demo



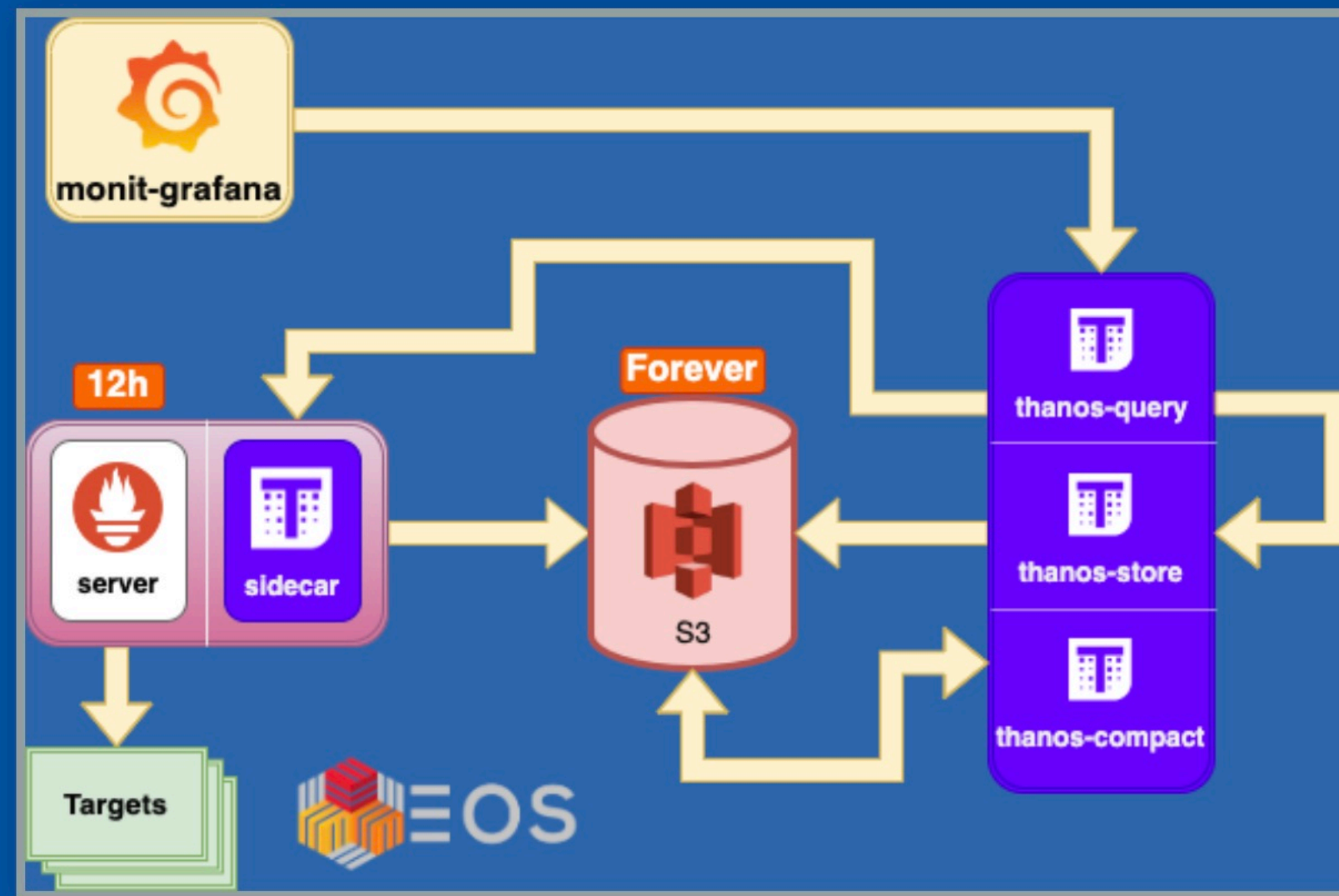
Architecture of Ceph Monitoring



Expand Thanos usage for EOS

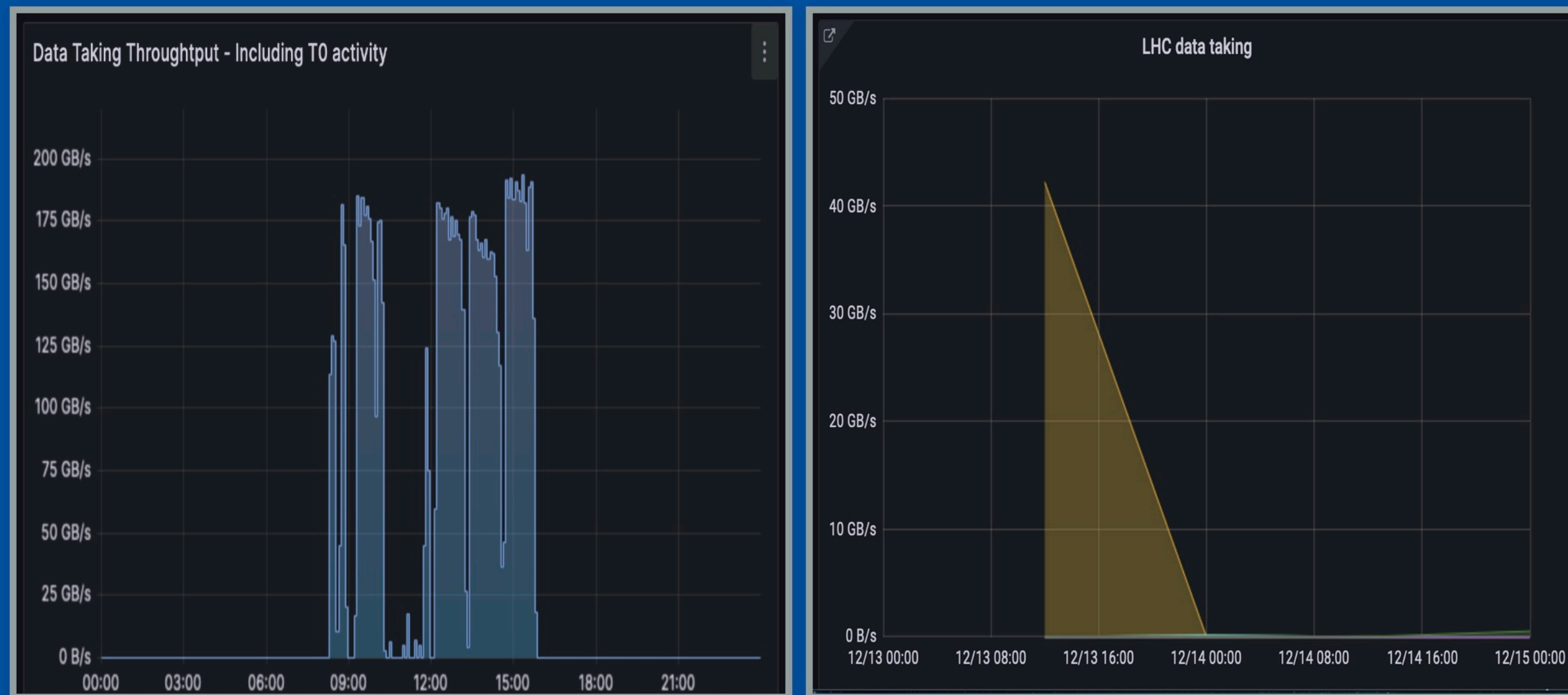
- In production since 1st November.
- More compact and streamlined setup (2 VMS)
 - 1 x VM for thanos (thanos-{store, compact, query}) - `eosthanos.cern.ch`
 - 1 x VM for prometheus server + thanos-sidecar - `eos-prom.cern.ch`
- Using new `thanos` module added to the CERN puppet infrastructure.

Architecture of EOS Monitoring



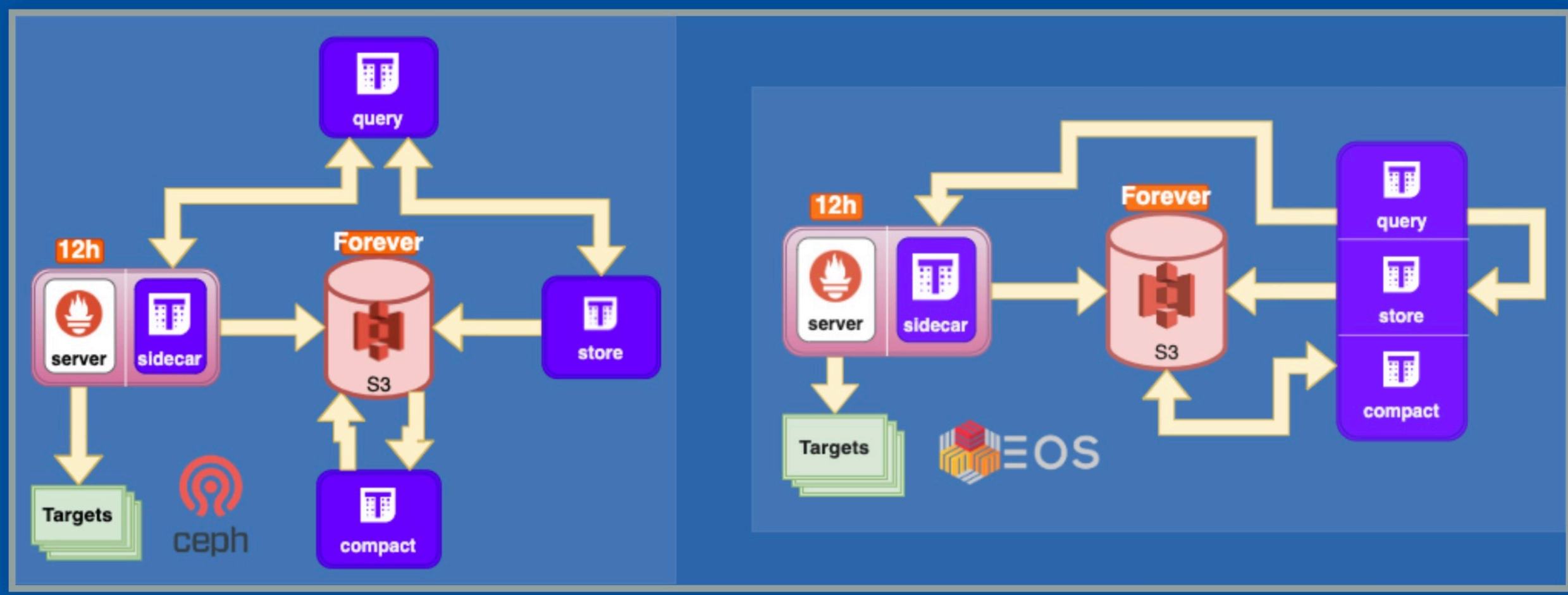
Demo

Prometheus + Thanos vs Graphite

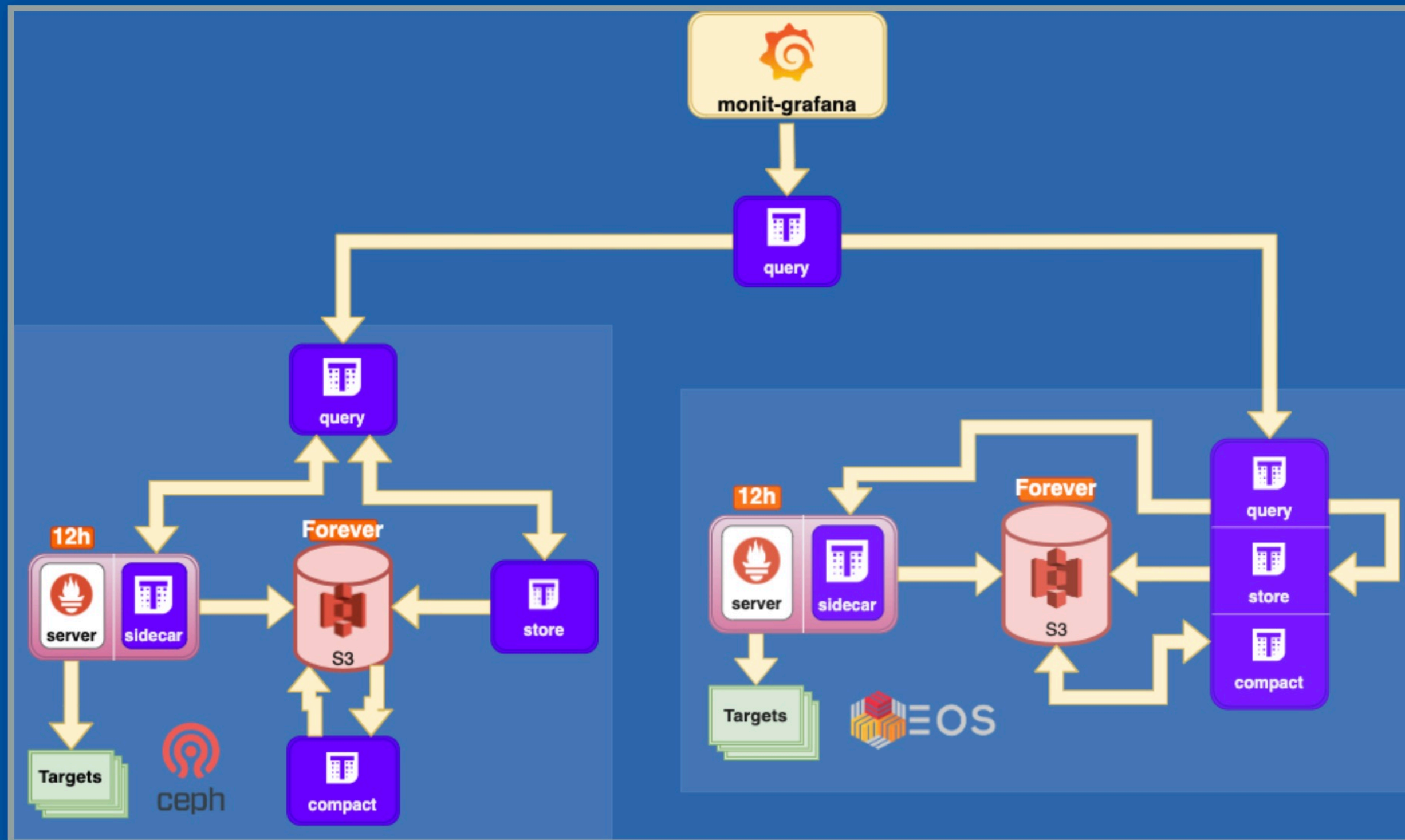


- Prometheus+Thanos VS Filer-Carbon

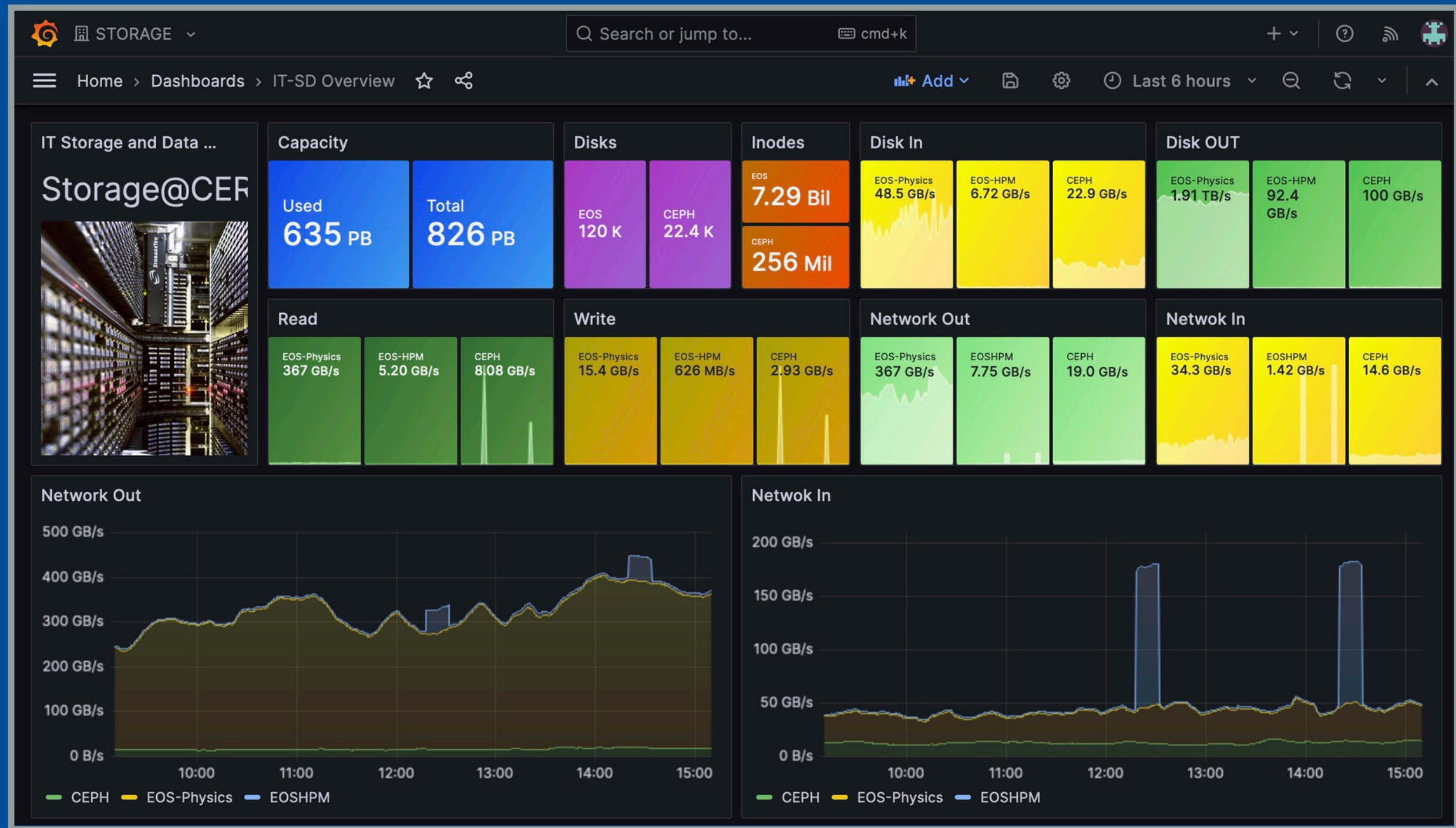
Bonus: Cross-service queries.



Bonus: Cross-service queries.



Bonus: Cross-service queries.



Conclusion

- Thanos is a pretty nice solution to have long-term metric storage for prometheus.
 - Transparent integration with Grafana
 - No need to re-write queries
 - Scalable
- Some internal notes if you want to try it out
[Prometheus+Thanos \(Puppet\)](#)



Import bookmarks...

Thanks

