

# Gephi

Download Gephi at <http://gephi.org>

## Goals

Create the **Photoshop** of network visualization, by combining a rich set of built-in **features** and a friendly **user interface**.

Design a **modular** and extensible software architecture, facilitate **plug-ins** development, reuse and mashup.

Build a large, international and diverse **open-source community**.

## Community

Join the network, participate designing the **roadmap**, get help to quickly code **plug-ins** or simply share your ideas.

**Gephi.org**

+ Getting started, + Tutorial, + Live demo...

Discover

**Blog + RSS**

Stay in touch

**forum.gephi.org**

Developers' platform

+ Code documentation + Dev Wiki

Contribute

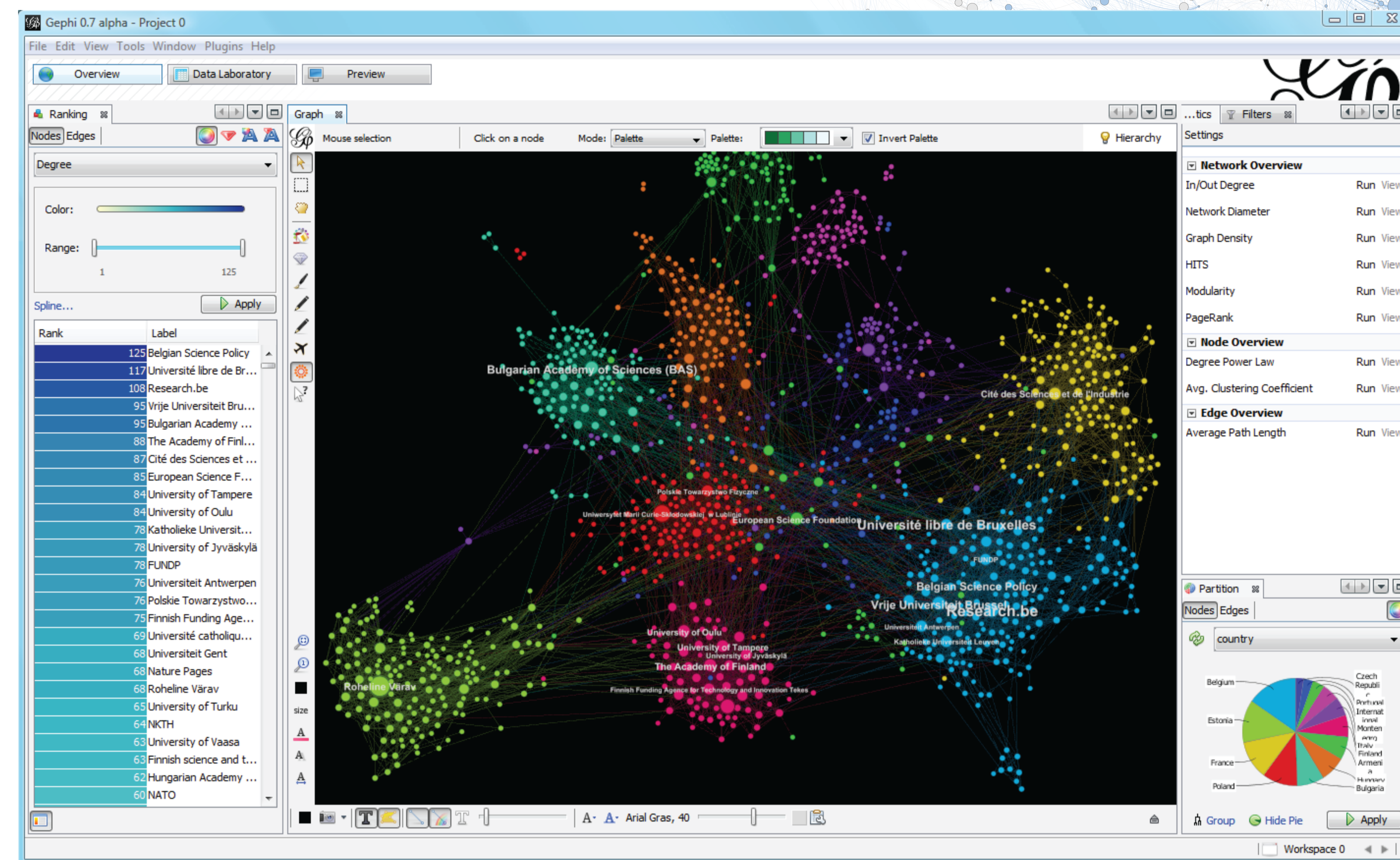
**Community portal (wiki)**

Get help

# The Open Graph Viz Platform

Mathieu Bastian  
INIST-CNRS, France  
Sebastien Heymann  
IMS CNRS - ENSC Bordeaux, France

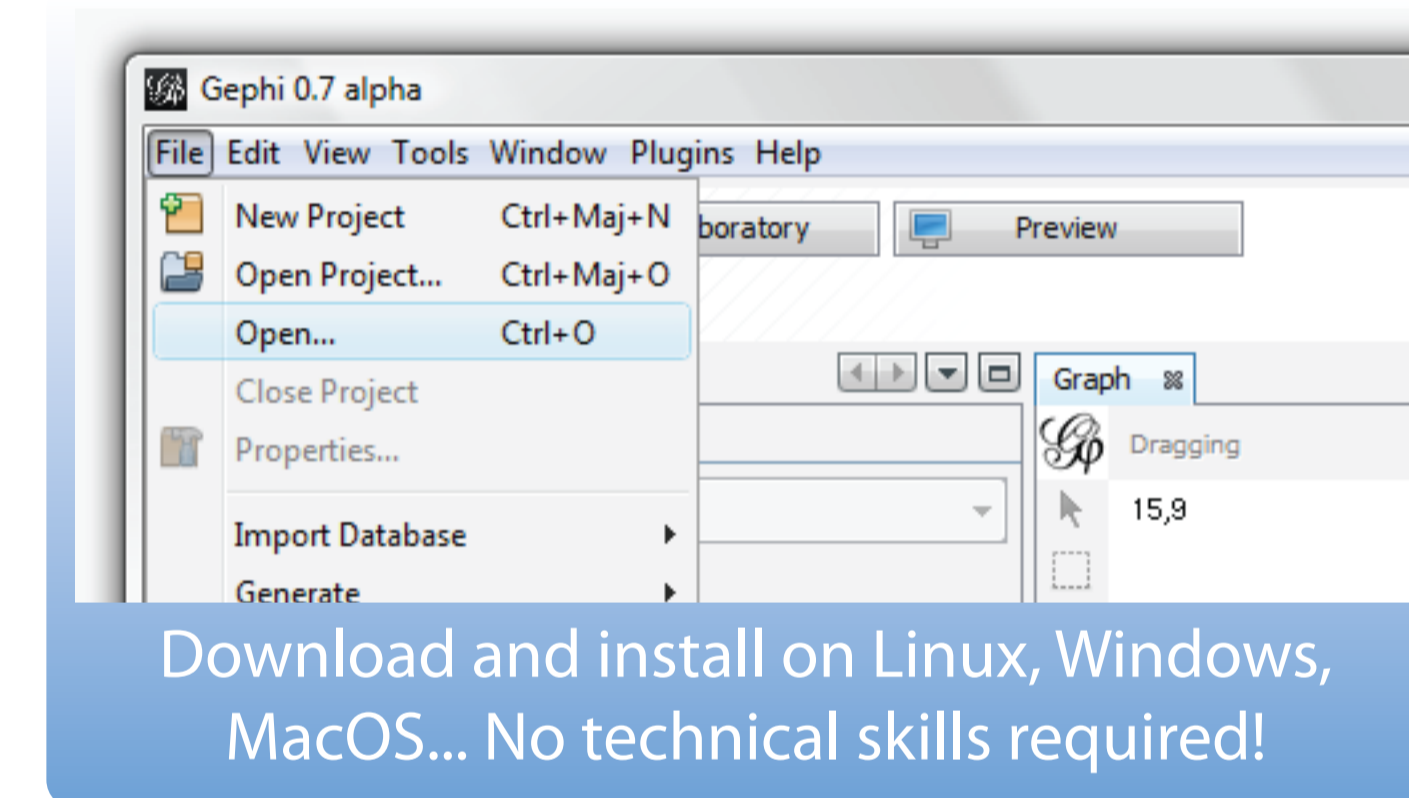
Gephi is a new open-source network visualization platform. It aims to create a **sustainable** software and technical ecosystem, driven by a large international **open-source community**, who shares common interests in networks and complex systems. The rendering engine can handle networks larger than 100K elements and guarantees **responsiveness**. Designed to make data navigation and manipulation easy, it aims to fulfill the complete chain from data importing to aesthetics refinements and **interaction**. Particular focus is made on the software **usability** and **interoperability** with other tools. A lot of efforts are made to facilitate the community growth, by providing tutorials, plug-ins development documentation, support and student projects. Current developments include Dynamic Network Analysis (DNA) and spigots (Emails, Twitter, Facebook ...) import.



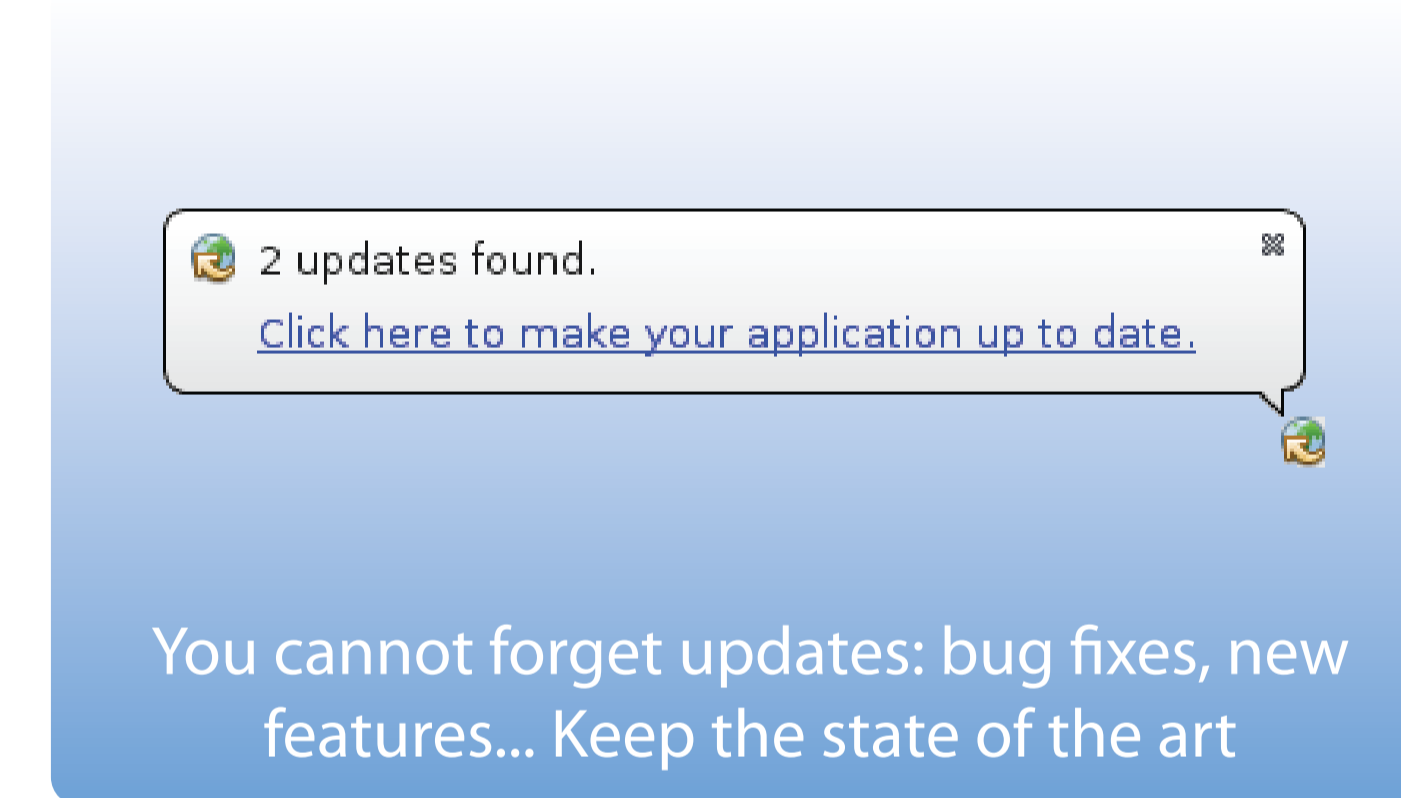
*Gephi aims at being sustainable, open to many kind of users, and creating a large, international and diverse open-source community*

## Features Highlight

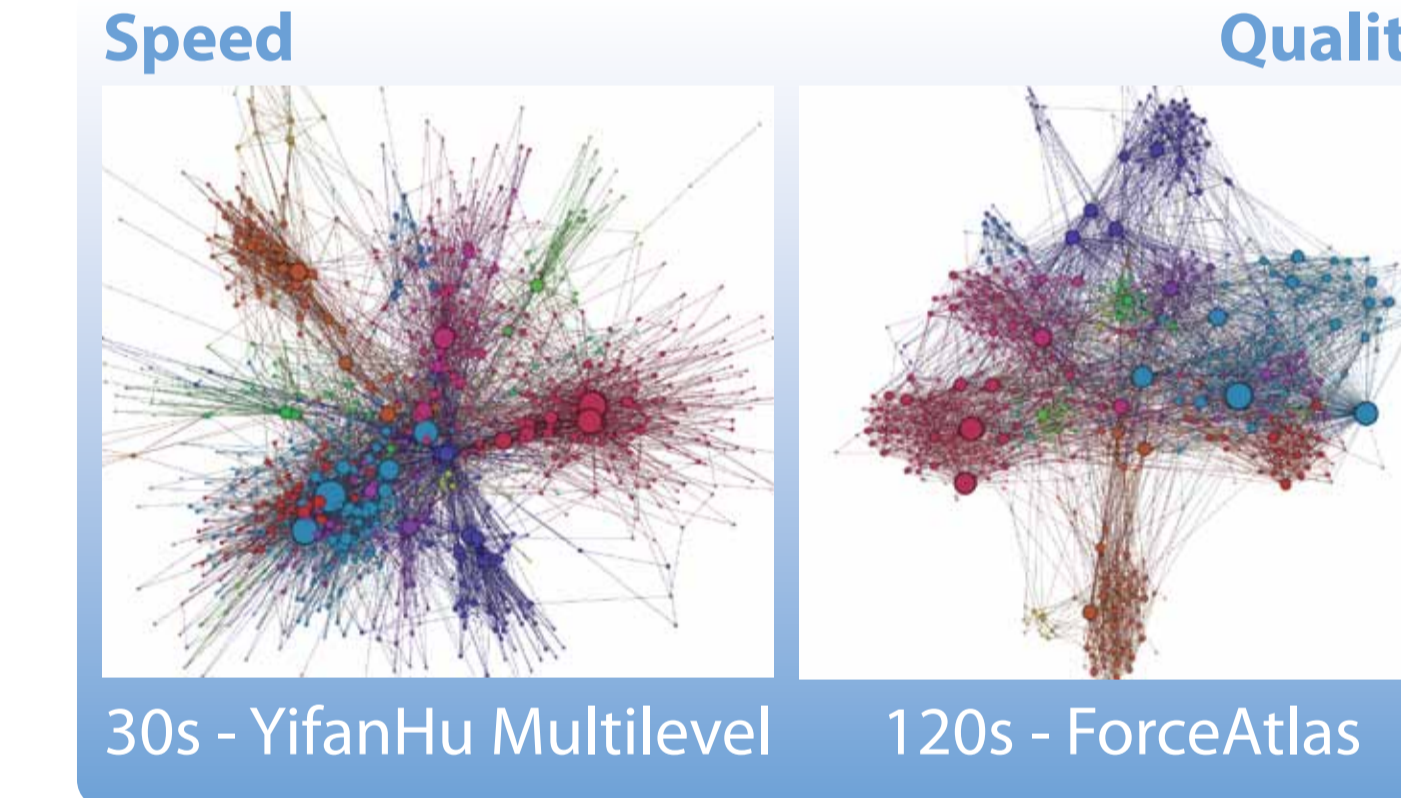
Install, Open, Save



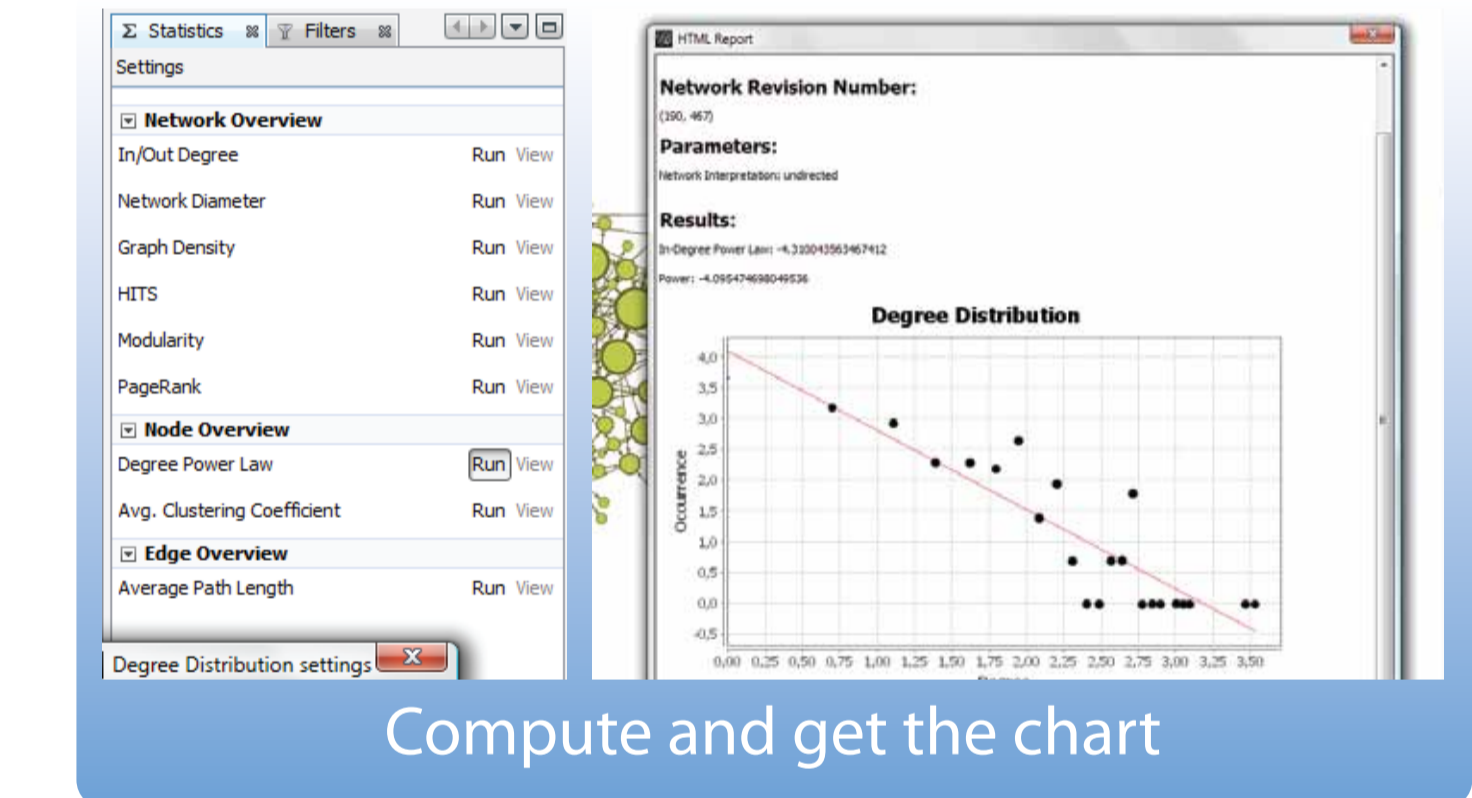
Automatic updates



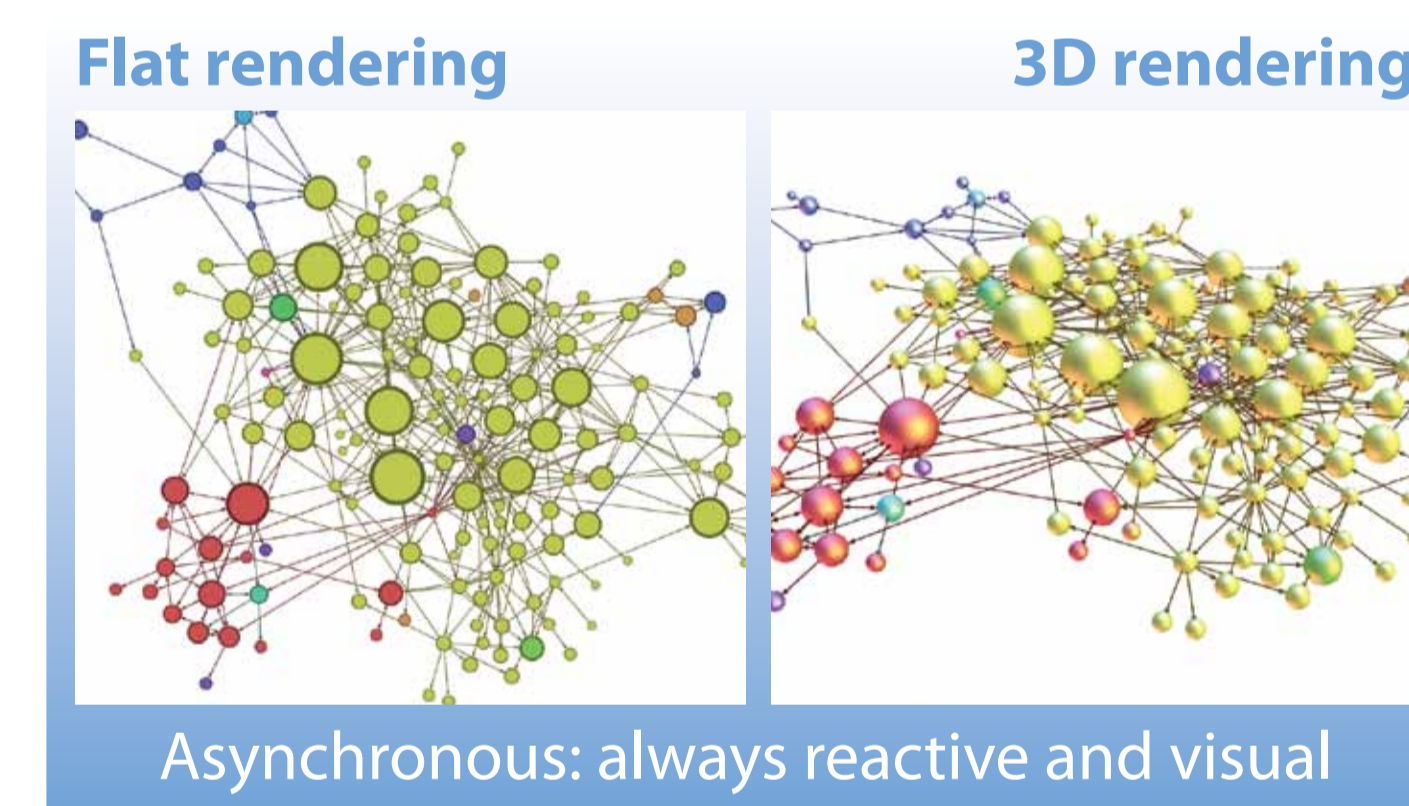
Choose the right layout



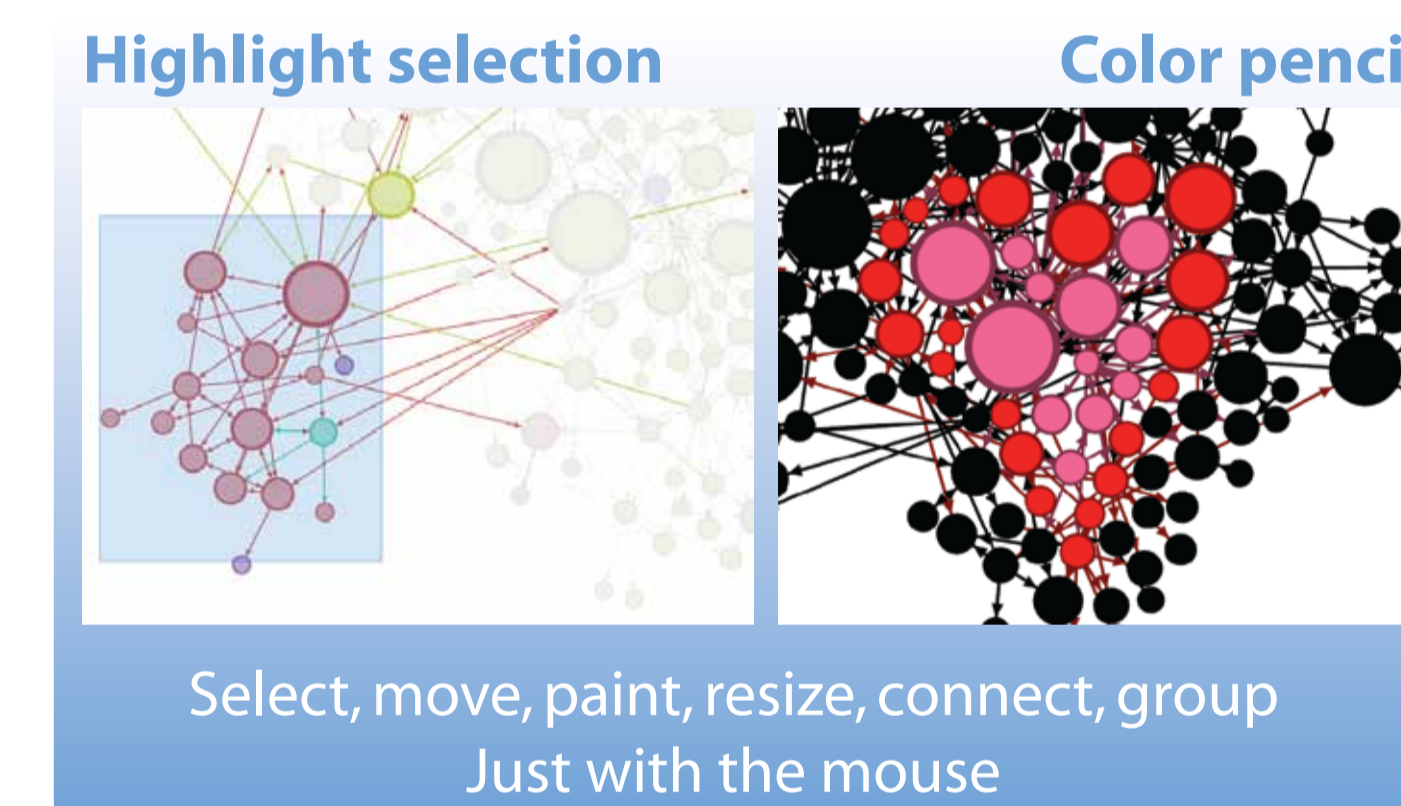
Stats & Metrics



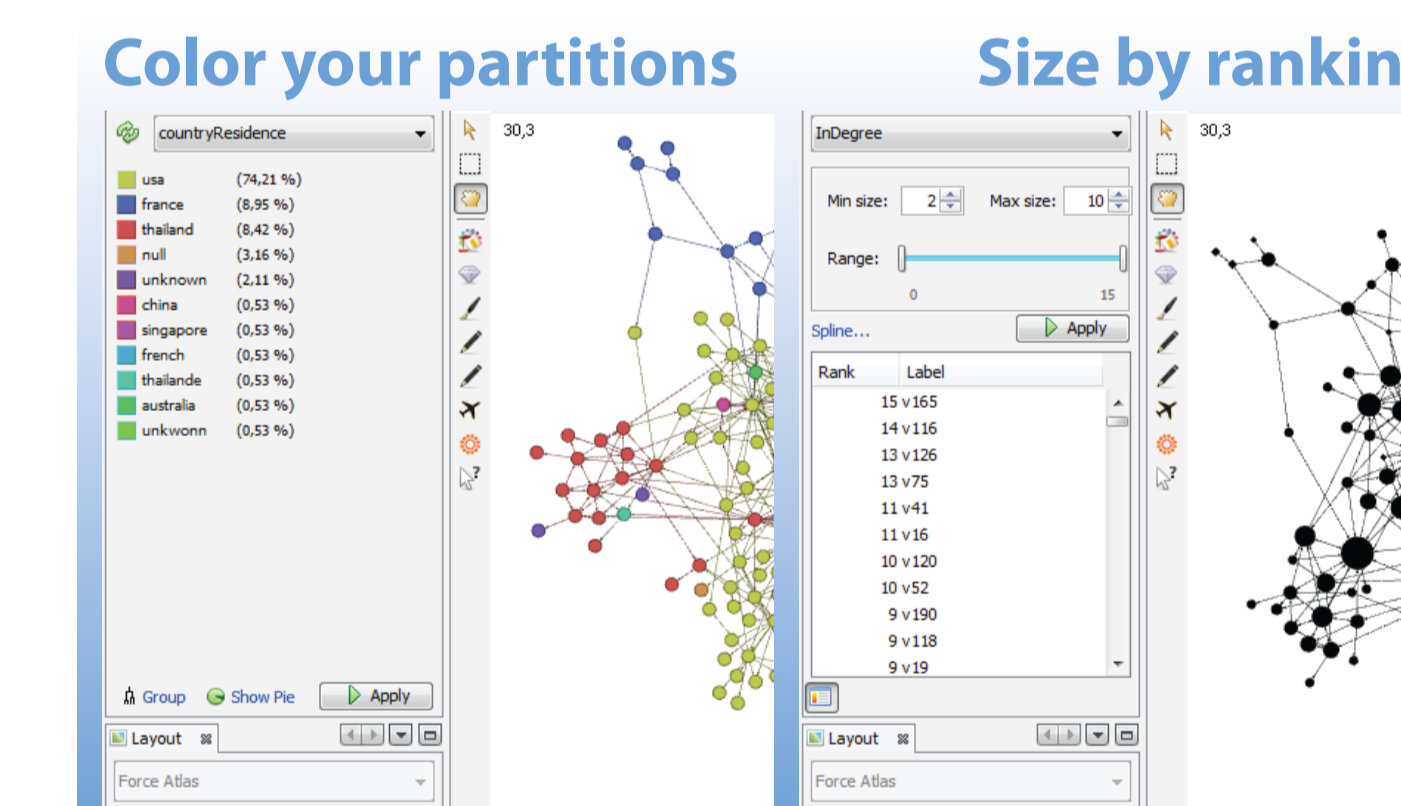
Mature OpenGL engine



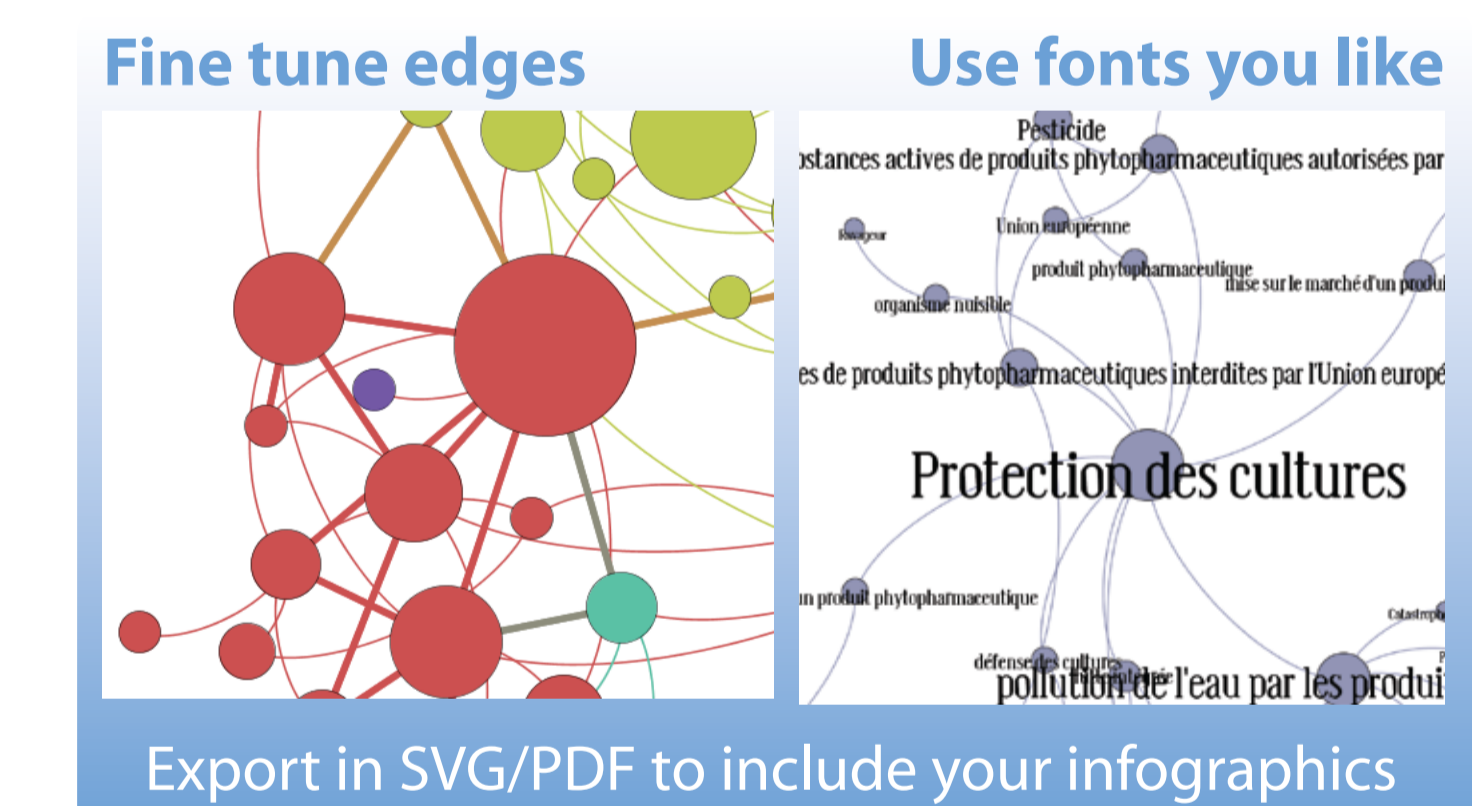
Interaction oriented



Easy sizes & colors



Vectorial export



## Metrics

- \* Betweenness, Eigenvector, Closeness
- \* Eccentricity
- \* Diameter, Average Shortest Path
- \* Clustering Coefficient
- \* Connected component
- \* PageRank, HITS
- \* Modularity (Louvain)

## Import Data

- \* UCINET DL, Pajek NET, CSV, GraphViz DOT, GML, GraphML, GDF, GEXF
- \* SQL Databases
- \* Neo4j (coming)
- \* Excel (coming)

## Architecture

The modular architecture allows developers adding and extending features with ease by developing plug-ins. Gephi can also be used as Java library in other applications and build for instance, a layout server.

