

2025-26

Faculty of Health
York University

health



MESSAGE FROM THE DEAN

➤➤ York's Psychology program ranks among the Top 5 psychology programs in Canada*

*QS World University Rankings 2024 By Subject

➤➤ York's Kinesiology & Health Science program ranks among the Top 10 Kinesiology programs in Canada*

*Times Higher Education World University Rankings 2024 by Subject

➤➤ York University ranks in the Top 4 comprehensive universities in Canada*

*Maclean's University Rankings 2024



Amazing things happen when diverse communities work together to solve significant global challenges. When York University students apply their knowledge, they have the power to make things right.

**RIGHT
THE
FUTURE™**



We strive to be leaders and partners for a healthy and just 21st century world.

Welcome to the Faculty of Health! We are committed to building a healthy world for all. In our degree programs, you will be prepared to succeed in professional schools (e.g., medicine, law, teaching) or other graduate studies, or to enter straight into the workforce to launch your career. We recognize that in-class learning must also be applied in real world settings and that is why all of our programs offer hands on learning opportunities, including case studies, interactions with industry experts, and placements with community partners, both local and global, in settings like hospitals, community health centres, schools, government agencies, non-governmental organizations (NGOs) or businesses.

We are focused on the needs of students, removing barriers that prevent some from realizing the benefits of postsecondary education and supporting academic success throughout their learning journey. We are cultivating an environment that supports mental health and wellbeing and provides an accessible and inclusive place to learn and grow.

I hope you find the information in this viewbook helpful. Please do not hesitate to reach out and contact us if you have questions or require more information via the contact information on the back cover of this viewbook. I want to take this opportunity to wish all of our incoming students the very best for success.

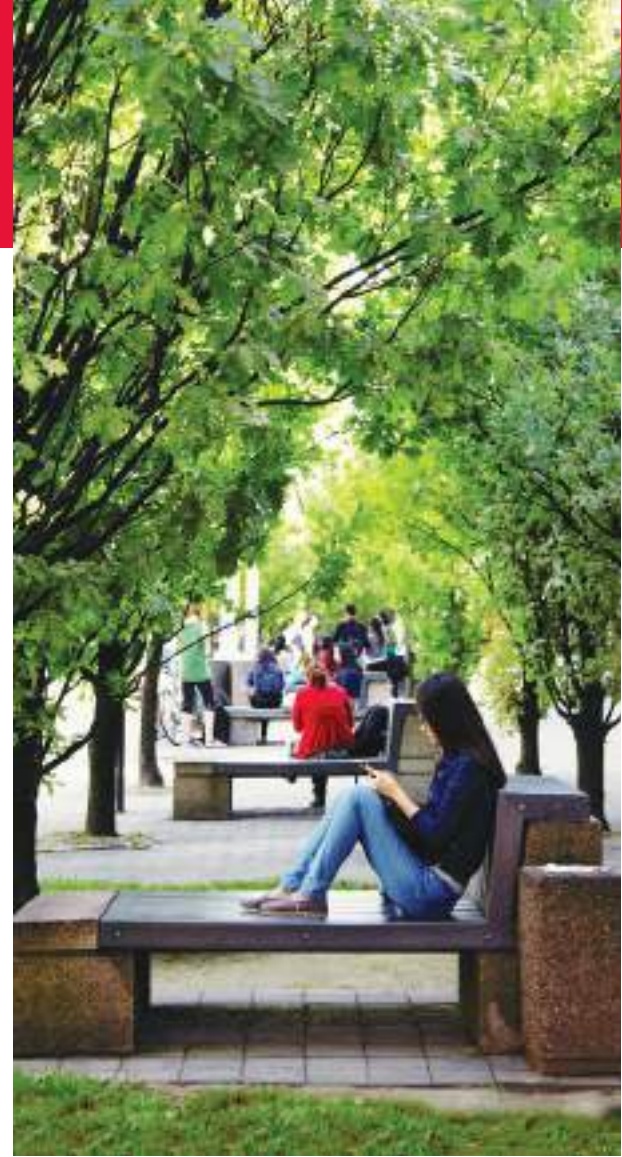
Sincerely,

A handwritten signature in black ink, appearing to read 'David Peters'.

David Peters, MD, MPH, DrPH
Dean, Faculty of Health



Muscle Health Research Centre



CONTENTS

- 04 **HEALTH STUDIES**
- 06 **GLOBAL HEALTH**
- 08 **KINESIOLOGY & HEALTH SCIENCE**
- 10 **PSYCHOLOGY**
- 12 **NEUROSCIENCE**
- 14 **NURSING**
- 16 Student Success
- 18 Pathways to Medical & Professional Schools
- 20 Hands on Learning
- 22 Admission Requirements
- 23 Scholarships & Awards
- 24 Required & Elective Courses



Anatomy Lab

Centre for Vision Research



Biomechanics Lab





HEALTH STUDIES

HEALTH BEYOND MEDICINE

With rapid changes in technology and a growing population, non-clinical health professionals, including health managers, digital health specialists, and policy experts are in demand. York's Health Studies program prepares students for careers in these rewarding fields while emphasizing an approach to health that focuses on broader societal issues.

HEALTH STUDIES

HEALTH POLICY, MANAGEMENT & DIGITAL HEALTH

Specialized Honours Bachelor of Health Studies (BHS)

Students in the Specialized Honours BHS in Health Policy, Management & Digital Health will develop broad knowledge of health policy, health management, and digital health. Students may also choose to focus in on any of these three areas. Health Policy provides an interdisciplinary foundation drawing from political science, political economy, sociology, gender studies, and ethics to critically assess health systems and contribute to policy development and implementation at all levels of society and within health systems. Health Management provides a systems approach to understanding the organization and delivery of healthcare as well as how to approach problem solving and decision making to improve quality, safety, effectiveness, and equity in health systems. Digital Health provides a theory and application-based education in information management, digital health solutions, interoperable health information systems, and current debates in health informatics/digital health to support leading edge health systems.

HEALTH STUDIES

Honours Bachelor of Health Studies (BHS)

In addition to taking courses in management, digital health, and policy, students study the breadth and depth of health and health care through a wide variety of issues and social contexts (e.g. social status and disability, homelessness), including case studies in health care in the community. Societal factors that determine why some people stay healthy and others become ill are also examined such as income, stress, early life, social exclusion, work conditions, unemployment, social support, mental health, addiction, food and transportation. Health Studies offers students the flexibility to attain a double major or do a minor in other Faculty of Health or York programs. The program also provides students with the flexibility to take additional prerequisites for postgraduate study in a professional program (e.g. medicine, law) or graduate school.

COURSES

All students, whether in the Specialized Honours option (Policy, Management & Digital Health) or the Honours Health Studies option, take the same core courses, including:

- Foundations of Health Studies
- Health Policy: Power & Politics
- Social Determinants of Health
- Health Care Ethics
- Statistical Methods in Health Studies
- Health Management I
- Health Informatics I
- Applied Research Approaches in Health Studies

4th YEAR FIELD PRACTICUM COURSE

Students enrolled in the Specialized Honours in Health Policy, Management & Digital Health have an opportunity in 4th year to get hands on, real-world experience through a 9.0 credit field practicum in a variety of health care settings in which students are mentored and supported by fieldwork-supervisors (HLST 4990).

Learn more at: go.yorku.ca/shpm-practicum

CAREERS IN HEALTH POLICY, MANAGEMENT AND DIGITAL HEALTH

With an aging and growing population and workforce, new technologies and restructured health care systems, Health Studies graduates are in demand in a variety of fields such as in health care, not-for-profit organizations, research, government and the private sector. Below are just some of the many career opportunities.

- Health Care Analyst
- Health Systems Planner
- Quality & Performance Analyst
- Process Improvement Specialist
- Health Manager (finance, HR, systems)
- Project Manager
- Clinic Administrator
- Health Policy Researcher
- Data Analyst
- Health Finance Analyst
- Health Information Specialist
- Systems Designer
- Systems Integration Specialist
- Software Developer
- Health Human Resources Specialist*
- Health Policy Advisor/Analyst
- Community Health Worker
- Health Care Consultant
- Health Writer/Communications Professional
- Physician*
- Nurse*
- Lawyer*
- Social Worker*
- Teacher*

* with further postgraduate training

Careers in health policy research and consulting, business management, and information analysis are among Toronto's Top Jobs.

(Toronto Star)



Students with their instructors at Toronto Grace Health Centre field placement

HEALTH STUDIES ALUMNI

Health Studies alumni are working in health care, government, non-profit organizations, business, research and more.



Alexander Christy
Program and Operations Coordinator, Association of Family Health Teams of Ontario



Kajal Patel
Clinical Applications Analyst, Peterborough Regional Health Centre



Shirley Li
Enterprise Analytics Analyst, Scarborough Health Network



Shayandeep Das
Data and Research Analyst, Toronto Grace Health Centre



Jennifer Catton
Clinical Director, Princess Margaret Cancer Centre



GLOBAL HEALTH

HEALTH WITHOUT BORDERS

Global Health is the study and practice of improving health and achieving health equity for all people worldwide. As the first undergraduate global health program in Canada, Maclean's magazine listed it as one of York's "stand out" programs.

GLOBAL HEALTH

Bachelor of Arts (BA) or Bachelor of Science (BSc)

The COVID-19 pandemic, climate change, and growing rates of obesity and diabetes are examples of global health challenges that do not recognize borders. Our health and that of the rest of the world's population is intertwined with broader issues, including population growth and migration, wealth disparity, environmental degradation, corporate activity, and government policy. Health not only involves the absence of disease, but also the promotion of physical, mental, and social well-being – with keen attention to how the conditions that ensure health and health equity require positive health practices on both an individual and societal level.

Tomorrow's health professionals, both clinical (e.g. physician, nurse, physician's assistant, respiratory therapist) and non-clinical (e.g. public health practitioners, NGO leaders, health data analysts, policy researchers, health system managers), will need to understand the global structures and processes that impact individual and population health in Canada and around the world. York's School of Global Health prepares you to be one of these professionals through a comprehensive education that encompasses the biomedical sciences, social sciences, and humanities, looking at topics such as infectious disease, chronic disease, anatomy and physiology, epidemiology, health promotion, health policy, health ethics, and health law. Students in the Global Health program also benefit from small class sizes and research opportunities where they enjoy direct interaction with fellow students and with professors who are experts and professionals in their fields.

COURSES

All students, whether in the BA or BSc options, take the same core courses that explore the major issues at the forefront of global health including:

- Global Health Governance and Leadership
- Global Health Policy: Power and Politics
- Determinants of Health: Local to Global
- Agents of Change in a Global World (strongly recommended elective course)
- Methods and Approaches in Global Health Research
- Epidemiology and Global Health
- Chronic Diseases and Care
- Health and Human Rights
- Health Care Planning for Communities
- Global Health Ethics
- Communicable Diseases and Care

PATHWAY TO MEDICAL, PROFESSIONAL SCHOOLS & POST-GRADUATE TRAINING

In addition to providing the prerequisite courses for medical school, the Global Health degree also prepares students for graduate and professional school, and post-graduate training in various disciplines in health (e.g. public health, nursing, dentistry, health management and administration) and beyond health (e.g. law, education, international development) – or to directly enter the workforce. Medical and graduate schools, for instance, are increasingly looking for candidates who have the kind of comprehensive education and interdisciplinary perspective that demonstrates social responsibility along with the teamwork and leadership skills provided by York's Global Health program.

REAL WORLD EXPERIENCE

4th YEAR FIELD PRACTICUM COURSE

Specialized Honours students have an opportunity to gain hands-on, real-world experience tackling global health issues working in a placement based in a global health organization domestically or internationally. Learn more at: go.yorku.ca/gh-practicum

"I gained a lot of first-hand global health experience during my practicum placement with the Euro Health Group Consultancy in Denmark contributing to the evaluation and analysis of a global vaccine program."

Global Health student Jacquelyn Yushkov



RESEARCH OPPORTUNITIES

Make connections and build your resume doing research at York's Global Strategy Lab, the Global & Environmental Health Lab, and the Dahdaleh Institute for Global Health Research led by Dr. James Orbinski who accepted the 1999 Nobel Peace Prize on behalf of Doctors Without Borders/Médecins Sans Frontières while serving as international president.



CAREERS IN GLOBAL HEALTH

Just a few of the many career opportunities in Global Health:

- Global Health Policy Analyst/Advisor
- Director, Non-Profit
- Global Health Program Officer/Evaluator
- Global Health Consultant
- NGO Program Coordinator
- Health Educator/Health Promoter – chronic diseases, communicable diseases, maternal/child wellbeing
- Health Manager/Researcher
- Clinic Director
- Physician*
- Nurse*
- Community Health Worker
- Community Development – environmental health, sustainable water, housing
- Information Specialist
- Communications Specialist
- Health Systems Planner*
- Public Health Practitioner*
- Lawyer*
- Teacher*
- Systems Integration Specialist
- Epidemiologist*
- Infection Prevention & Control Specialist

* with further postgraduate training

GLOBAL HEALTH ALUMNI

York's Global Health graduates are going on to careers in medicine, research, policy, nursing, and more, as well as pursuing graduate school and other professional schools.



Humaima Ashfaque
Hand Hygiene Coordinator & Data Analyst, Hamilton Health Sciences



Gurneet Bhela
Health Evaluation Graduate Student, University of Waterloo



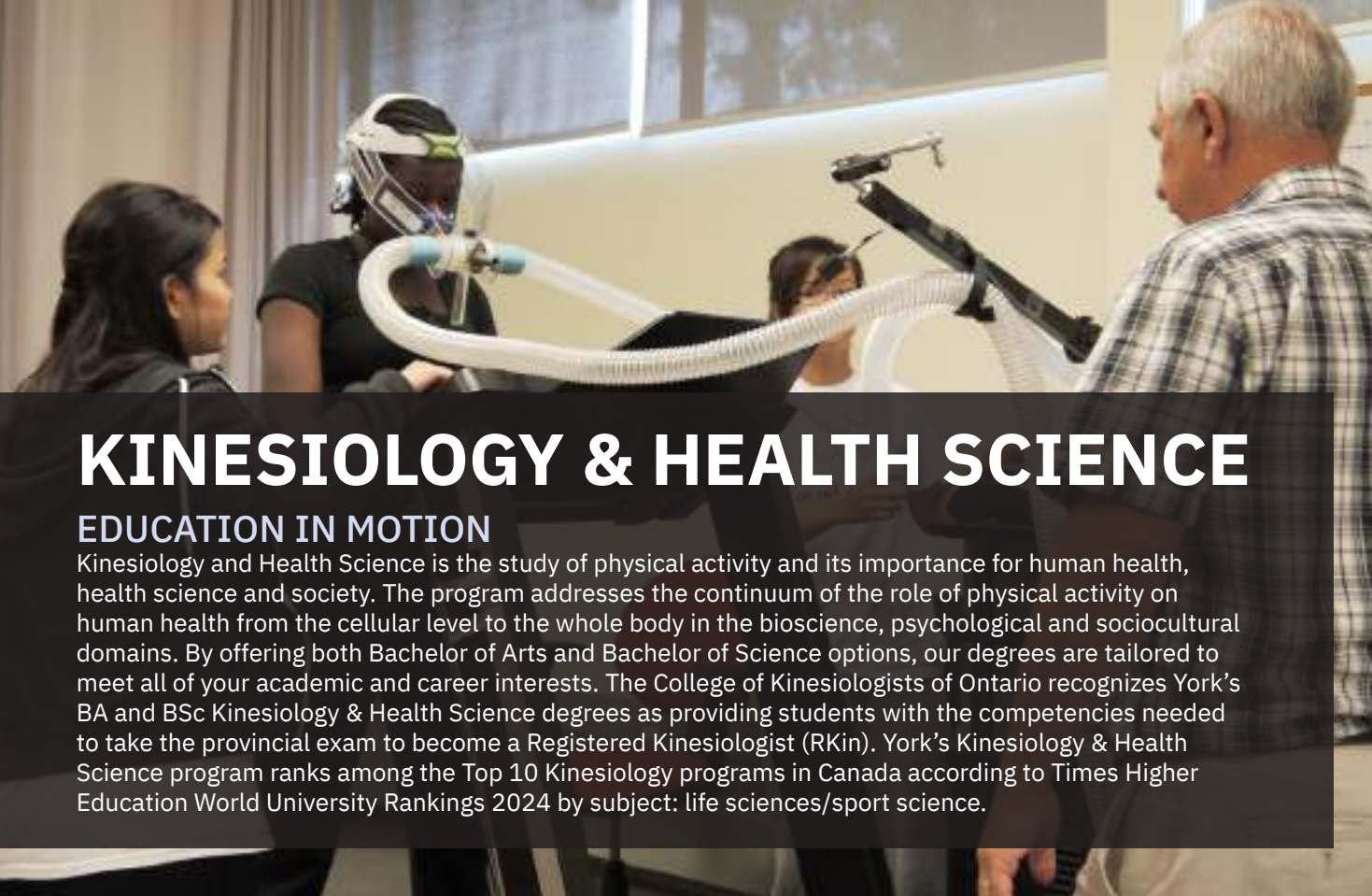
Ryan Jeevanayagam
Program & Policy Officer, Employment and Social Development Canada



Abigail Pamintuan
User Experience Designer



Nishila Mehta
Resident Physician, University of Toronto



KINESIOLOGY & HEALTH SCIENCE

EDUCATION IN MOTION

Kinesiology and Health Science is the study of physical activity and its importance for human health, health science and society. The program addresses the continuum of the role of physical activity on human health from the cellular level to the whole body in the bioscience, psychological and sociocultural domains. By offering both Bachelor of Arts and Bachelor of Science options, our degrees are tailored to meet all of your academic and career interests. The College of Kinesiologists of Ontario recognizes York's BA and BSc Kinesiology & Health Science degrees as providing students with the competencies needed to take the provincial exam to become a Registered Kinesiologist (RKin). York's Kinesiology & Health Science program ranks among the Top 10 Kinesiology programs in Canada according to Times Higher Education World University Rankings 2024 by subject: life sciences/sport science.



KINESIOLOGY & HEALTH SCIENCE

Bachelor of Arts (BA) or Bachelor of Science (BSc)

In both degree options, the Kinesiology and Health Science program includes required core courses in Anatomy, Biomechanics, Data Analysis and Research Methods, Fitness and Health, Nutrition, Physiology (Cellular, Systems and Exercise), Psychology of Physical Activity and Health, Skilled Performance and Motor Learning, and Sociocultural Perspectives. The program is delivered through in-class and blended lectures, tutorials, experiential laboratories and integrated physical activity courses, providing the opportunity to learn and develop skills in a wide variety of settings. York's program offers the anatomy and physiology prerequisites for medical school.

COURSES

York's Kinesiology & Health Science program offers more courses across a wider range of topics covering fitness, physical activity and health science, with more required courses taught by full-time professors than any other Kinesiology program in Canada. All students, whether in the BA or BSc options, take the same core courses including:

- Sociocultural Perspectives in Kinesiology
- Fitness and Health
- Human Physiology I
- Human Anatomy
- Research Methods in Kinesiology
- Analysis of Data in Kinesiology I
- Psychology of Physical Activity and Health
- Human Physiology II
- Skilled Performance and Motor Learning
- Biomechanics of Human Movement
- Exercise Physiology
- Human Nutrition
- Integrated Physical Activity for Life I and II

CERTIFICATES

Two highly-rated certificate programs are available to supplement your degree studies: yorku.ca/health/kinesiology/certificates

- Athletic Therapy Certificate*
- Fitness Assessment & Exercise Counselling Certificate

* York is the only university in Ontario to offer the Athletic Therapy Certificate.

CAREERS IN KINESIOLOGY & HEALTH SCIENCE

Students in Kinesiology & Health Science receive a strong foundation in biological, behavioural, and socio-cultural disciplines that afford a broad and diversified range of options for careers or related post-graduate studies.

- Athletic/Cardiac Rehabilitation
- Athletic Therapist
- Chiropractor*
- Coaching and Fitness
- Dentist*
- Exercise Physiologist
- Fitness Trainer
- Food and Nutrition
- Gym owner
- Optometrist*
- Pharmacist*
- Physician*
- Physiotherapist/ Occupational Therapist*
- Recreation Management
- Registered Kinesiologist
- Researcher and Developer
- Speech-language pathologist*
- Sport Management
- Teacher*
- Wellness Coordinator

* with further postgraduate training

KINESIOLOGY & HEALTH SCIENCE ALUMNI

Kinesiology & Health Science alumni are working in health care, fitness and recreation, health education, research, as well as going on to medical and professional health schools.



Ryan Cortez
Medical Student,
University of Toronto



Corinne Babiolkis
Clinical Research
Associate, Queen's
University



Tiffany Mak
Policy Analyst,
Ontario Ministry
of Health



Dolev Yissar
Medical Student,
Xavier University
School of Medicine



Deanna Lentini
Registered
Physiotherapist,
Providence Healthcare,
Toronto



PSYCHOLOGY

REAL WORLD THINKING

Psychology is the scientific study of the mind and behaviour viewed from social, developmental, clinical and biological perspectives. York's Department of Psychology, located at the Keele campus, offers the largest and most diverse selection of courses available at any Canadian university taught by internationally recognized teachers, researchers and clinical practitioners. York's Psychology program was ranked 4th in Canada by QS World University Rankings 2024.



PREPARING STUDENTS FOR SUCCESS: WRITING IN PSYCHOLOGY

Develop university-level writing ability to succeed in your courses and beyond. In this course, students write about psychological content in a way that develops general written communication skills that are widely transferable. Students learn how texts 'work' and develop self-reflective writing skill.

PSYCHOLOGY

Bachelor of Arts (BA) or Bachelor of Science (BSc)

In both degree options, students take the first year Introduction to Psychology course where they are introduced to basic terms and concepts in Psychology, as well as a diversity of topics including the biological bases of behaviour, learning, emotion, perception, motivation, cognition, child development, personality, social psychology and psychological health, distress and impairment in real world contexts. The BA option gives students more choices of electives, including in the humanities and social sciences; while students in the BSc must take electives in math and science (e.g. biology, chemistry, physics, computer science).

Students can gain a credential in one of seven Psychology Concentrations: Counselling and Mental Health; Psychological Humanities, Contexts & Communities; Child and Youth Development; Applied Methods and Analysis; Neuropsychology; Aging and Late Life Development; Our Social World and Social Minds.

Sample Core Courses:

- Introduction to Psychology
- Writing In Psychology
- Critical Thinking in Psychology
- Introduction to Research Methods
- Statistical Methods I and II

Sample Elective Courses:

- Psychological Health, Distress and Impairment
- Animal Behaviour
- Community Psychology
- Psychology of Intimate Relationships
- Psychology of Reasoning, Judgment and Decision-Making

SPECIALIZED HONOURS PROGRAM

For those students thinking about graduate study in Psychology, the Specialized Honours Psychology program is designed to provide advanced training in research methods, statistical analysis, scientific communication, and critical thinking. Students complete a specific set of courses intended to develop breadth and depth of psychological knowledge and build strong research skills. You would be given the opportunity to work on research projects under the supervision of a faculty member in your 3rd and 4th years and your research training would culminate in the completion of a thesis supervised by a faculty member. Throughout the program you would be mentored in the process of preparing for and then applying to graduate programs in psychology.

CERTIFICATES

The following certificate programs are available to supplement your degree studies: go.yorku.ca/psyc-certificates

- Certificate in Psychological Methods and Data Analysis
- York/Seneca Rehabilitation Services Certificate
- Certificate in Counselling and Mental Health
- Certificate in Aging

CAREERS IN PSYCHOLOGY

Understanding human behaviour and what motivates people is a highly valued skill in multiple sectors including the health, non-profit, private, education and social services, as well as in government, law and research.

- Applied Behaviour Analyst*
- Child and Youth Worker
- Community Justice Worker
- Corrections Officer
- Counsellor* (schools, substance abuse, bereavement, immigration)
- Developmental Disabilities Services Worker*
- Early Childhood Educator
- Educational Administrator*
- Family Therapist
- Human Resources Specialist*
- Labour Relations Specialist
- Lawyer*
- Marketing Manager
- Mental Health Therapist*
- Physician*
- Policy Advisor
- Professor*
- Psychiatrist*
- Psychologist*
- Psychotherapist*
- Public Relations Specialist
- Rehabilitation Manager
- Research Assistant
- Social Worker*
- Speech Language Pathologist*
- Teacher*

* with further postgraduate training

PSYCHOLOGY ALUMNI

Psychology alumni are working in health care, law, marketing, education, research and more.



Kat Kova
Psychotherapist,
Private Practice



Farwa Jafri
Law school graduate
(Osgoode),
Incoming Articling
Student,
Barbara Schlifer
Commemorative Clinic



Rebecca Pillai Riddell
Psychology Professor,
York University



Jonathan Clodman
Elementary Teacher,
Toronto District School
Board



Safiyyah Alli
Instructor Therapist,
Always Connected
Treatment Network

NEUROSCIENCE

UNLOCKING THE SECRETS OF THE BRAIN AND NERVOUS SYSTEM

A brain or nervous system illness or injury will affect one in three Canadians in their lifetime. Autism, addiction, Alzheimer's disease, depression, dementia, Parkinson's disease, spinal injury, and stroke cost the Canadian economy billions of dollars annually. Understanding the brain and nervous system to address neurological and mental health disorders is one of the most pressing scientific challenges of our time.

NEUROSCIENCE

Bachelor of Science (BSc)

All first year students take the same core courses, including the keystone course Frontiers in Neuroscience. Second year students take a broad array of neuroscience courses. In third year, students develop their understanding by choosing courses from the three specialization streams (cellular/molecular, cognitive/behavioural, or systems neuroscience), and put it all together with a stimulating, research-based capstone course in fourth year.

The interdisciplinary nature of York's program gives students access to renowned researchers working in many different areas of neuroscience. The program's small size encourages collaboration among students, faculty members, and community practitioners as they investigate the development, structure, and function of the nervous system including the ways it can change – whether naturally or through human intervention.

HOW TO APPLY

When applying through the Ontario Universities' Application Centre (OUAC), students can choose one of three entry pathways:

**Neuroscience –
Kinesiology & Health Science BSc
(Faculty of Health)**

**Neuroscience –
Psychology BSc
(Faculty of Health)**

**Neuroscience –
Biology BSc
(Faculty of Science)**

Students are strongly advised to select only one pathway, since the entry requirements and standards are identical for all three. Students with the strongest transcripts are selected for the Neuroscience program regardless of the pathway selected. Students should choose the pathway that appeals most to their interests.

SAMPLE COURSES

- Frontiers of Neuroscience
- Fundamental Molecular and Cellular Neuroscience
- Systems, Behavioural and Cognitive Neuroscience
- Neural Basis of Behaviour
- Functional Neuroanatomy
- Biology I - Cells, Molecular Biology and Genetics
- Biology II - Evolution, Ecology, Biodiversity and Conservation Biology
- Mathematics I and II for the Biological and Health Sciences



EXPERIENTIAL EDUCATION IN THE NEUROSCIENCE PROGRAM

The program emphasizes hands-on learning and uses methods of assessments that match these experiences, such as interviews, case-studies/simulations, team critical reflections, and an independent or team-based capstone project. Experiential education is woven into York's Neuroscience program.

NEUROSCIENCE CAPSTONE EXPERIENCE

Each student's program will culminate in the completion of the Neuroscience capstone experience – either conducting an individual research project or participating in a team-based research project. Regardless, students will complete a project that has direct relevance to current research in neuroscience, whether on campus or with an industry or hospital partner. Examples of the kinds of capstone research experience include:

- The roles of genetics and the environment on autism
- How the brain plans actions in three-dimensional space
- The visual system's role in outer space
- Reality check: What the senses tell the brain about the world
- Smart synapses: The making and breaking of memories
- The cellular and molecular basis of brain disorders

Please note that while the capstone experience is guaranteed, participation and the nature of the experience will vary depending on the projects, researchers, and partners available at the time.

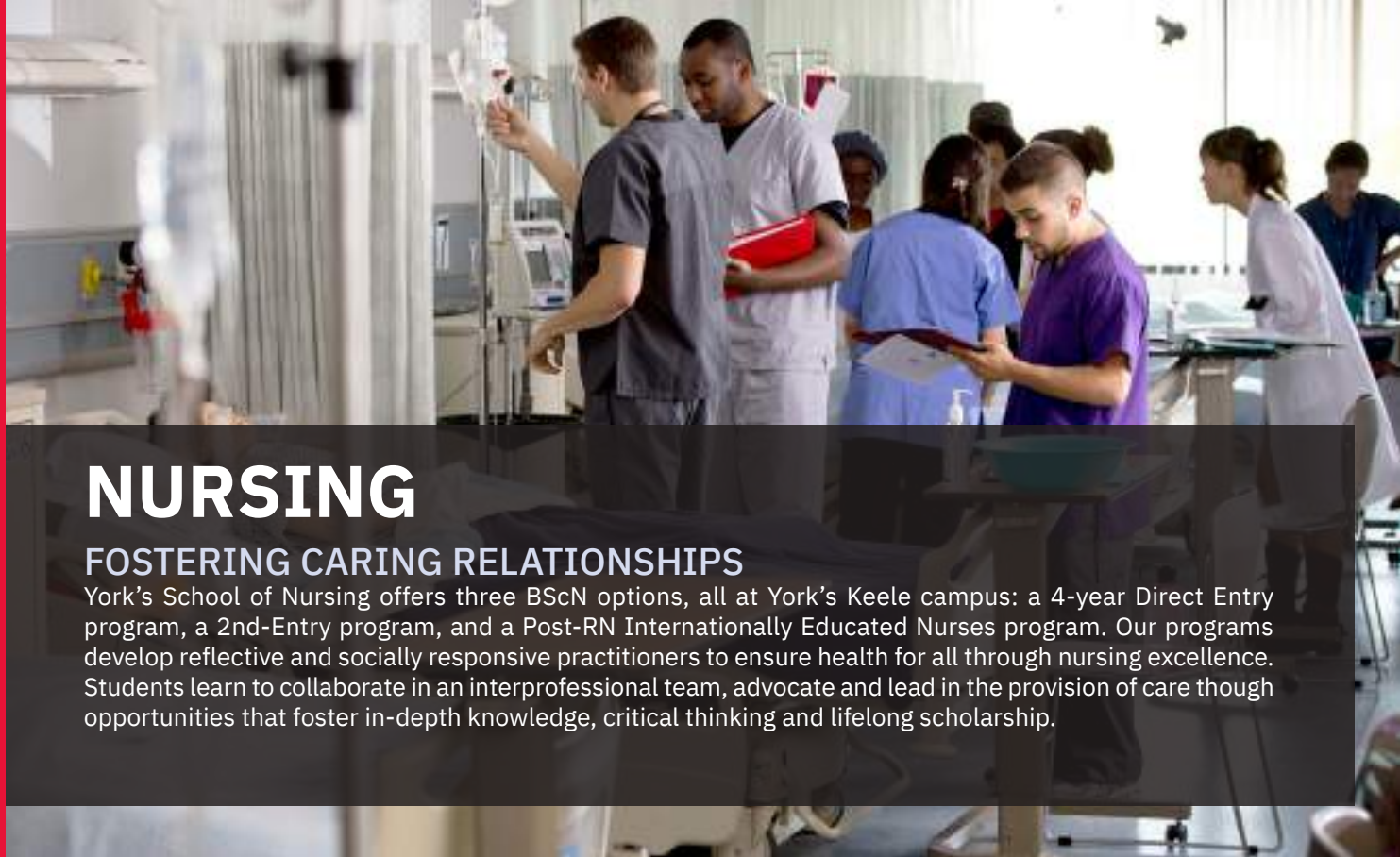
CAREERS IN NEUROSCIENCE

- Physician/Medical Specialist*
- Health care manager
- Research assistant/associate in academia, health care, industry
- Rehabilitation counsellor
- Disability case manager
- Community program coordinator
- Clinical data collector
- Laboratory assistant/technician
- Regulatory affairs specialist
- Medical devices sales associate
- Patient care assistant
- Professor/Teacher*
- Science editor/writer
- Science technician

* with further postgraduate training

York University's interdisciplinary Bachelor of Science (BSc) Specialized Honours Program in Neuroscience provides students with:

- Comprehensive and advanced exposure to the breadth and depth of neuroscience taught by award-winning, internationally recognized researchers
- An undergraduate path into medical school or graduate studies (MSc, PhD)
- Preparation for neuroscience-related careers in research institutes, universities, health care, and industry



NURSING

FOSTERING CARING RELATIONSHIPS

York's School of Nursing offers three BScN options, all at York's Keele campus: a 4-year Direct Entry program, a 2nd-Entry program, and a Post-RN Internationally Educated Nurses program. Our programs develop reflective and socially responsive practitioners to ensure health for all through nursing excellence. Students learn to collaborate in an interprofessional team, advocate and lead in the provision of care through opportunities that foster in-depth knowledge, critical thinking and lifelong scholarship.

York's Nursing programs use transformative teaching/learning strategies that blend theory and practice, culminating in a final practicum experience. All undergraduate nursing programs – 4-Year Direct Entry, 2nd Entry and Post-RN Internationally Educated Nurses (IEN) – are approved by the College of Nurses of Ontario (CNO). Graduates receive a Specialized Honours Bachelor of Science in Nursing (BScN) degree enabling graduates to write the registration exam approved by the CNO. Graduates must meet essential professional practice requisite skills and abilities (e.g., cognitive, communication, interpersonal, behavioural, psycho-motor, sensory and environmental capacities) and specific College requirements to become members who can practice with the title "Registered Nurse".

4-YEAR DIRECT ENTRY NURSING

BScN
The School of Nursing's new stand-alone 4-Year Direct Entry Program offers all four years at York's Keele campus and is designed for students who have no previous nursing education. Interprofessional thinking and collaboration are integrated throughout the program, culminating in a nursing capstone course which aligns with a final practicum experience.

2ND ENTRY NURSING

BScN
The School of Nursing's 2nd Entry Program builds on prior university learning and is available to students who have completed a university degree in any discipline or have 60 credits or more toward a university degree. The program builds on prior university learning thus enabling students to complete the program in two calendar years through concentrated and continuous learning in six terms.

INTERNATIONALLY EDUCATED NURSING (IEN)

BScN
The IEN program is specifically designed for internationally registered nurses who graduated from nursing programs outside of Canada. The program recognizes the strengths of internationally Registered Nurses and provides a 20-month program to enable students to transition to the Canadian healthcare system, demonstrate entry-to-practice competencies, and meet specific College requirements to become members who can practice with the title "Registered Nurse" in Canada.

SAMPLE CORE COURSES

- Development as a Professional Nurse
- Ethics and Health Equity in Interprofessional Practice
- Health Assessment
- Leadership, Change and Innovation
- Pathophysiology, Pharmacology and Knowledge Integration
- Reflection and Relational Practice in Professional Nursing



EXPERIENTIAL EDUCATION IN NURSING

Hands-on learning is at the core of the Nursing program and integrated through practicum field placements for all students with health care providers, and through our Nursing Simulation Centre, Nursing Skills Lab and Computer Simulation Lab.

NEW: Specialized streams in **High Acuity and Critical Care**, and **Mental Health, Illness and Addiction** are available to students within the curriculum of the 4-year Direct Entry BScN program, 2nd Entry BScN, and IEN program as a potential career pathway for students interested in careers in these areas. Please note that pursuing a specialized stream in the IEN program will add an additional semester of study.

CAREERS IN NURSING

- Acute Care Nurse
- Public Health Nurse
- Mental Health Nurse
- Hospice/palliative care Nurse
- Oncology Nurse
- Paediatric Nurse
- Forensic Nurse
- Community Health Nurse
- Long Term Care Nurse
- Primary Health Care Nurse
- Nurse Scientist/Researcher*
- Nurse Practitioner
- Clinical Nurse Specialist*
- Nurse Educator
- Nurse Navigator
- Nurse Advocate
- Nurse Leaders (Managers, Directors, CEOs)
- Nurse Entrepreneur/Innovator
- Nurse Consultant
- Digital Health Nurse
- Health Policy Manager
- Artificial Intelligence Nurse Researcher
- Travel Nurse

* with further postgraduate training

NURSING ALUMNI



Murphy Ash
Chemotherapy RN & Professor, Joseph Brant Hospital, Humber College & Seneca College



Halima Mohidin
Registered Nurse, Surgical Unit, Toronto Western Hospital



Cassandra Melo
Registered Nurse in Charge, City of Toronto Long Term Care Homes Division



Jenny Nguyen
Operating Room Nurse, Toronto Western Hospital



STUDENT SUCCESS

STUDENT-CENTRIC. COLLABORATIVE. MENTORSHIP. ENGAGEMENT. BOLD.

Inspiring learning, leadership and citizenship: The Faculty of Health and its affiliated Colleges, Calumet College and Stong College, are committed to students' success throughout their university experience. Through peer-based academic support programs, peer mentorship and leadership development delivered by the Colleges, we aim to help students transition successfully into university, develop their academic and professional skills, foster equity, diversity and inclusion, grow personally, and establish networks to pursue their career interests.

Calumet and Stong Colleges offer a college community committed to an engaged and meaningful student experience. Strategic directions include developing student leadership, fostering a culture of social and intellectual growth, promoting decolonization, equity, diversity, inclusion, & citizenship, promoting health and wellness, building resources and sustainability, and enhancing academic/learning support programs and student success.

STUDENT TRANSITION

Orientation – a great way for new students and their families to transition into university, discover campus resources, and establish social and academic networks. Orientation provides opportunities to learn about York and its resources, and to connect with students, Peer Leaders, staff, faculty and alumni.

Peer Mentoring – this program connects upper-level students to students new to York to help them transition into university, and connects graduate students and alumni to upper-level students to guide and advise them about post-graduation career choices.

ACADEMIC SUPPORT PROGRAMS

Peer Assisted Study Sessions (P.A.S.S.) – free, study group sessions for challenging courses facilitated by well-trained, upper-level student leaders to strengthen students' study skills and learning strategies to succeed academically.

Peer Tutoring – free one-on-one academic service provided by well-trained, upper-level student leaders to help students understand challenging course content and develop their learning skills.

Course Representatives – well-trained peers who make class announcements to encourage students to engage in their own personal and academic success, liaise with students and the course director to improve students' learning experience, and organize unfacilitated study groups to promote healthy study strategies.

STUDENT LEADERSHIP & PROFESSIONAL DEVELOPMENT

Leadership Exploration and Development (LEAD) – Faculty of Health students can develop or strengthen their leadership and citizenship skills by partaking in Emerging Leadership Training (ELT), Foundational Peer Leadership Training (FPLT), and Advanced Peer Leadership Training (APLT). The LEAD program also offers stand-alone LEAD Essentials training workshops and Exec YU training for

students in formal leadership positions (CCSC affiliated student clubs and organizations).

Career Exploration – events with a variety of formats are provided for students to explore future career choices. Students are invited to network with York alumni, fellows, faculty members, and graduate students to discuss pathways to success, job shadowing, volunteering, mentoring, and internships.

Health & Wellness – hands-on workshops and themed events addressing the Body, Mind and Heart model. Workshops discuss nutritional, physical, sexual, intellectual, academic, occupational, financial, environmental, emotional, social and spiritual aspects of well-being.

Agents of Change – a social entrepreneurship program that provides up to \$750 in start-up funds from the Faculty of Health to help students launch their own health-related initiative related to the social determinants of health as well as the United Nation's Sustainable Development Goals.

Awards, Bursaries & Recognition – students are recognized for their academic scholarship, community engagement and/or significant contribution to college life.

COMMUNITY BUILDING & DEVELOPMENT

Student Engagement & Partnership – Calumet College Council and Stong College Student Government represent the voice of the students in their respective colleges. Faculty of Health program-affiliated student clubs, associations, and groups also provide support to student programming/success and engage the student body.

stong.yorku.ca

calumet.yorku.ca

STUDENT SUCCESS PROGRAMS

For more information about the Faculty of Health's student success programs, visit:

- stong.yorku.ca
- calumet.yorku.ca
- health.yorku.ca/student-success-programs

York also offers many intramural and varsity sports teams. Visit yorkulions.ca for more information.

Community Engagement & Wellbeing – programs and workshops designed for students to take a break and decompress, or serve as an inclusive platform for citizens, activists, and leaders to share their personal, career, and life experiences and challenges, and how they negotiated their life paths around these challenges.

Indigenous Circle – Calumet College has had a long and unique connection with the Indigenous community. Both Colleges are committed to learning from and strengthening relationships with Indigenous communities to promote Indigenous knowledge and traditions, advocating for priorities that enhance Indigenous health and wellness, engaging the Indigenous community, and celebrating Indigenous heritage.

Alumni and Fellow Engagement – Alumni and Fellows (supporters and friends) contribute to creating a multi-cultural, intellectual, inclusive and vibrant community at the Colleges. They guide and mentor students, assist with adjudicating awards and bursaries, engage in evolving the student success programs, help with special projects and advise the Heads of the Colleges.



PATHWAYS TO MEDICAL & PROFESSIONAL SCHOOLS

Graduates of York's Faculty of Health degree programs find success in professional study including medical, dental, physiotherapy, optometry, law and more.



Photo provided by York University VISTA program

WHY THE FACULTY OF HEALTH IS THE PLACE FOR YOUR PRE-PROFESSIONAL HEALTH SCHOOL EDUCATION

- Prerequisite courses required by professional schools such as anatomy, physiology and statistics
- Personal contact with professors
- Flexibility to structure courses to suit your interests and goals
- Interactive hands-on laboratories
- Pre-professional academic advising and student clubs
- Hands-on experience through volunteer and paid positions in research labs and in the community (e.g. hospitals, community health centres)



WHICH PROGRAM IS BEST?

A common misconception is that there is one perfect program when applying to professional school. All six programs in YorkU's Faculty of Health can be used as preparation for medical, dental, physiotherapy, law, and other professional programs. Every professional school will be different in what they are looking for in terms of admission cut-offs, specific prerequisite courses, degree types (BA vs BSc) etc. The same program at two different schools could have differing admission requirements.

It is best to do your research on the professional schools you're interested in by looking up their admission requirements to ensure you are meeting the professional school's requirements. However, as all programs look for a strong admission average, we do recommend choosing a major that genuinely interests you as you are more likely to receive strong marks in subjects you enjoy.

CONTACT US

For more information, contact the Faculty of Health Recruitment Office at hlthrec@yorku.ca



NISHILA MEHTA
ALUMNA, GLOBAL HEALTH
Resident Physician, Internal Medicine,
University of Toronto

“York prepared me well for medical school thanks to professors who supported me at every step, peers who shared my passion for promoting health and health equity, and for the numerous opportunities I had to develop my leadership and critical thinking skills.”



Biomechanics Lab



REAL WORLD EXPERIENCE

In the Faculty of Health, your learning experience is not confined to the classroom. You will examine real life issues in health, and in health care, in real world environments. You will apply your knowledge in a range of settings, from laboratories to sports fields, hospitals, clinics and community settings, both local and global.



Nursing Simulation Centre



Psychology Research Poster Day



Global Health student in Jordan



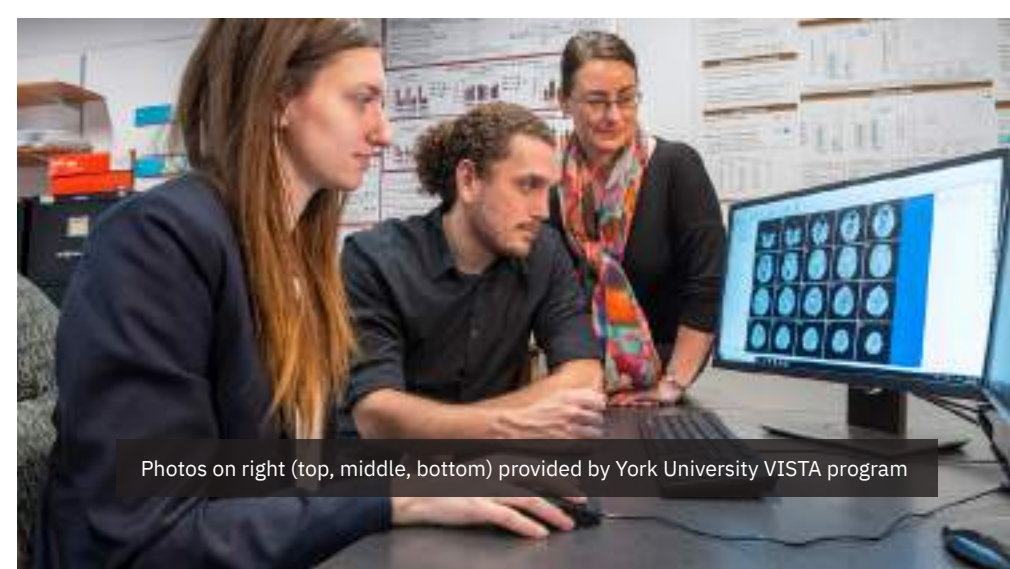
KIN Kids



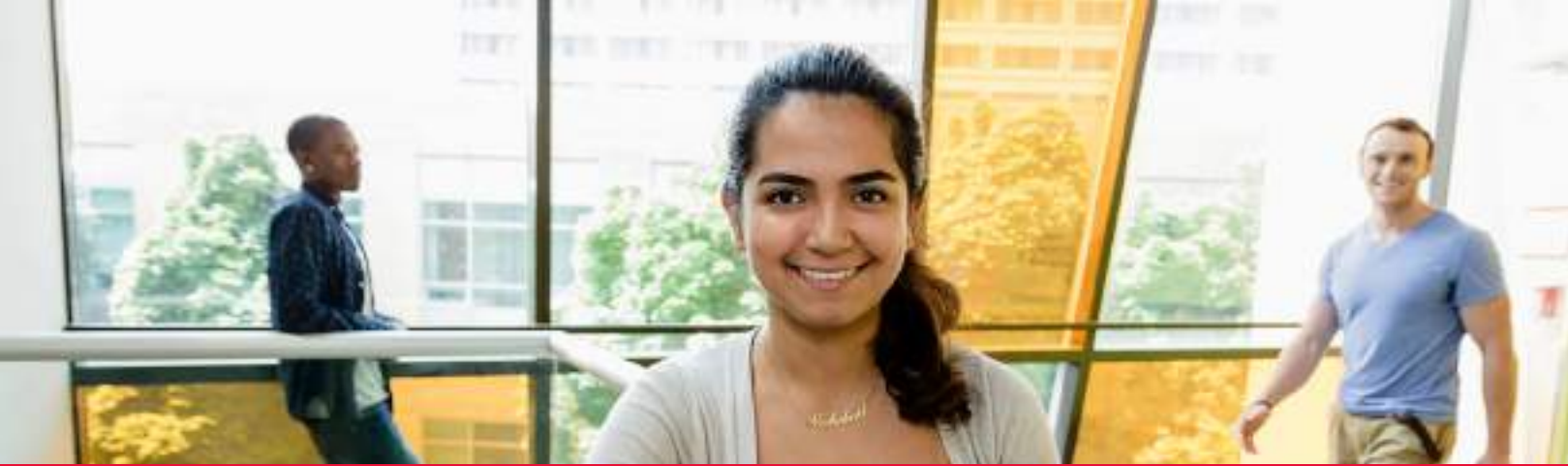
Anatomy Lab



Global Health student in Belize



Photos on right (top, middle, bottom) provided by York University VISTA program



ADMISSION REQUIREMENTS

To be admitted to York University as an Ontario high school applicant you must meet the University's general requirements which include: Ontario Secondary School Diploma (OSSD) and six 4U or 4M courses, including ENG4U and all Faculty or program-specific prerequisites. Francophone applicants may present FRA4U, FEF4U or FIF4U.

We accept a combination of U and M courses. We may offer you early conditional admission if you have strong Grade 11 finals and/or interim Grade 12 results. Note: To take MCV4U, you must take MHF4U either before or while taking MCV4U.

To gain admittance to the Faculty of Health, you may need to meet further requirements depending on the program to which you have applied.

Program	Requirements
Health Studies Health Policy, Management & Digital Health	BHS: ENG4U 4U math recommended
Global Health	BA: ENG4U, SBI4U or SCH4U or SPH4U BSc: ENG4U, 4U math, SCH4U or SPH4U
Kinesiology & Health Science	BA: ENG4U, 4U math, SBI4U or SCH4U or SPH4U BSc: ENG4U, 4U math, SCH4U or SPH4U
Psychology	BA: ENG4U BSc: ENG4U, 4U math, SCH4U or SPH4U
Neuroscience	BSc: ENG4U, MHF4U, SBI4U, SCH4U No prerequisite below 80%
4-year Direct Entry BScN Program	ENG4U, 4U math, SBI4U, SCH4U or SPH4U No prerequisite below 70%
2nd Entry BScN Program	Visit: yorku.ca/health/2ndentry
Post-RN IEN BScN Program	Visit: yorku.ca/health/ien



SCHOLARSHIPS & AWARDS

Excellent grades are rewarded at York. The University has an extensive scholarship and financial aid program to recognize and assist students throughout their studies. In addition to University-wide scholarships, the Faculty of Health has scholarships reserved for entering students. For more Scholarships, Awards and Bursaries, visit students.yorku.ca/sfs/scholarships-awards-bursaries.

ENTRANCE SCHOLARSHIPS

York awards scholarships to high achieving students based on their admission average.

GLOBAL HEALTH ENTRANCE SCHOLARSHIP

(multiple granted annually)

Value: \$2,000

Eligibility: Distinguished academic record at the secondary level, demonstrated by the highest final admission average. Both Canadian and international students are considered.

KINESIOLOGY & HEALTH SCIENCE ENTRANCE AWARDS

Canadian high school students entering the Kinesiology and Health Science program may apply for:

BOBBY ORR ENTRANCE SCHOLARSHIP

(one granted annually)

Value: \$2,100 plus a York University Entrance Scholarship, if eligible.

Eligibility: Distinguished academic and extracurricular record at the secondary level.

KINESIOLOGY & HEALTH SCIENCE ENTRANCE AWARD

(one granted annually)

Value: \$2,100 plus a York University Entrance Scholarship, if eligible.

Eligibility: Distinguished academic and extracurricular record at the secondary level. Ontario resident, Canadian Citizen/Permanent Resident/Protected Person. Financial need.

YORK ENTRANCE SCHOLARSHIPS

Final Admission Avg	Entrance Scholarship Amount
80% – 84.9%	\$1000 entrance scholarship
85% – 89.9%	\$1500 entrance scholarship
90% – 94.9%	\$2000 entrance scholarship
95% or higher	\$3500 entrance scholarship

FACULTY OF HEALTH RENEWABLE ENTRANCE AWARD

(minimum of two granted annually)

Value: \$1,875 x 4 years

Eligibility: Students entering their first year of study in the Faculty of Health who are Canadian citizens, permanent residents or protected persons, who are residents of Ontario, demonstrate financial need and have achieved a minimum admission average of 75 percent. Students who continue to meet the above criteria will be eligible to renew the award in their second, third and fourth year of study.

FACULTY OF HEALTH INTERNATIONAL STUDENT ENTRANCE SCHOLARSHIP OF EXCELLENCE

International students with an admission average of 90% and higher will receive an automatic entrance scholarship valued at \$2,000. For more details, contact hlthrec@yorku.ca.

THE LILLIAN WRIGHT MATERNAL-CHILD HEALTH UNDERGRADUATE SCHOLARSHIP

(Four granted annually)

Value: \$2,500 if eligible.

Eligibility:

- Awarded to undergraduate students in the Faculty of Health
- Minimum cumulative grade point average of 7.5
- Demonstrate an interest in the area of maternal-child health

REQUIRED & ELECTIVE COURSES

Students are required to take certain courses, as outlined below. Each incoming student will receive instruction regarding course selection prior to the start of the academic year. Course descriptions are available on individual school and department websites.

PROGRAM	SAMPLE REQUIRED COURSES General List of Core Courses*	SAMPLE ELECTIVE COURSES
Health Studies Health Policy, Management, & Digital Health	HLST 1010 Foundations of Health Studies I HLST 1011 Foundations of Health Studies II HLST 2010 Social Determinants of Health HLST 2020 Health Policy: Power & Politics HLST 2030 Health Management I HLST 2040 Health Informatics I HLST 2301 Statistical Methods in Health Studies I** HLST 2302 Statistical Methods in Health Studies II** HLST 4010 Health Care Ethics HLST 4200 Applied Research Approaches in Health Studies: Advanced Seminar ** HLST 1111 Mathematics for Health Studies is strongly recommended for incoming students who have not completed 4U Data Management (or equivalent).	HLST 3350 Health Data Analytics, Machine Learning & AI HLST 3400 Healthcare Quality Improvement & Patient Safety HLST 3530 Population Aging and Health HLST 4000 Health Care Law HLST 4210 Health Care Leadership HLST 4310 Analysis and Design of Health Information Systems HLST 4510 Health and Human Rights HLST 4900 Health Sector Applied Project HLST 4990 Health Policy, Management, Informatics Practicum* *available in the Specialized Honours only
Global Health	GH 1001 Anatomy and Physiology I GH 1002 Anatomy and Physiology II GH 1010 Foundations of Global Health Studies I GH 1011 Foundations of Global Health Studies II GH 2000 Global Health Policy: Power and Politics GH 2011 Methods and Approaches in Global Health Research I GH 2100 Chronic Diseases & Care GH 2200 Determinants of Health: Local to Global GH 3000 Epidemiology and Global Health GH 3011 Methods and Approaches in Global Health Research II GH 3100 Communicable Diseases and Care GH 3545 Promoting Global Health GH 3740 Health Care Planning for Communities GH 4010 Global Health Ethics GH 4100 Policy and Program Evaluation in Global Health GH 4200 Global Health Governance and Leadership GH 4510 Global Health and Human Rights GH 4600 Practicum Professionalization Seminar* GH 4601 Global Health Practicum* GH 4602 Applied Global Health Research Capstone* *available in the Specialized Honours only	IHST 1020 Agents of Change GH 3200 Creating Intercultural Safety GH 3300 Introduction to Global Environmental Health GH 3500 Historical and Contemporary Perspectives on Global Mental Health GH 3550 Global Health Architecture GH 4500 Global Health and Humanitarianism GH 4900 Selected Topics in Global Mental Health GH 4910 Selected Topics in Promoting Global Health GH 4920 Selected Topics in Social Determinants of Global Health
Kinesiology & Health Science	KINE 1001 Socio-cultural Foundations in Kinesiology: Tools of Inquiry KINE 1020 Fitness and Health KINE 1900 Integrated Physical Activity for Life I KINE 2001 Socio-cultural Insights and Applications in Kinesiology KINE 2011 Human Physiology I KINE 2031 Human Anatomy KINE 2049 Research Methods in Kinesiology KINE 2050 Analysis of Data in Kinesiology I KINE 2900 Integrated Physical Activity for Life II KINE 3000 Psychology of Physical Activity and Health KINE 3012 Human Physiology II KINE 3020 Skilled Performance and Motor Learning KINE 3030 Biomechanics of Human Movement KINE 4010 Exercise Physiology KINE 4020 Human Nutrition	KINE 2380 Introduction to Sport Administration KINE 2475 Coaching: The Art and Science KINE 2495 Sports Injuries KINE 3340 Growth, Maturation and Physical Activity KINE 3350 Physical Activity, Health and Aging KINE 3400 Fitness Consulting and Personal Fitness Training KINE 4130 Advanced Human Nutrition KINE 4410 Obesity: Assessment, Treatment and Implications KINE 4430 Business Skills for Sport and Fitness Professionals KINE 4518 Molecular Link Between Obesity and Cancer KINE 4520 Sport Psychology Seminar KINE 4620 Counselling Skills for Kinesiology and Health Science KINE 4900 Exercise Therapy for Chronic Disease

PROGRAM	SAMPLE REQUIRED COURSES General List of Core Courses*	SAMPLE ELECTIVE COURSES
Psychology	PSYC 1010 Introduction to Psychology PSYC 2010 Writing in Psychology PSYC 2020 (Statistical Methods I and II) OR PSYC 2021 (Statistical Methods I) AND PSYC 2022 (Statistical Methods II) PSYC 2030 Introduction to Research Methods 3 credits earned, chosen from group one (2100 series) 3 credits earned, chosen from group two (2200 series) PSYC 4180 Critical Thinking in Psychology [Note: The required courses listed are for the Honours BA/BSc program; the requirements differ for other programs. Please visit yorku.ca/health/psychology/undergraduate-program/degree-requirements-by-program for more details]	PSYC 3140 Psychological health, distress, & impairment PSYC 3310 Psychology and the Law PSYC 3350 Cultural Psychology PSYC 3450 Environmental Psychology PSYC 3550 Creativity PSYC 3590 Drugs and behaviour PSYC 3630 Psychology of the Family PSYC 3670 Psychology of Sexual Orientation PSYC 4460 Atypical development
Neuroscience	BIOL 1000 Biology I - Cells, Molecular Biology and Genetics BIOL 1001 Biology II - Evolution, Ecology, Biodiversity and Conservation Biology MATH 1506 and MATH 1507 - Mathematics I and II for the Biological and Health Sciences NRSC 1001 Frontiers of Neuroscience NRSC 2000 Fundamental Molecular and Cellular Neuroscience NRSC 2100 Systems, Behavioural and Cognitive Neuroscience NRSC 2200 Neuroscience Techniques NRSC 3000 Molecular and Cellular Neurobiology PSYC 3250 Neural Basis of Behaviour KINE 3650 Functional Neuroanatomy NRSC 4000 Individual Research Project	PSYC 2220 Sensation and Perception PSYC 2260 Cognition PSYC 3265 Memory PSYC 3495 Neuroscience of Aging & Cognitive Health KINE 3670 Molecular and Cellular Neuroscience with Applications to Health PSYC 4080 Neuropsychology of Abnormal Behaviour PSYC 4215 Neuroimaging of Cognition - fMRI Methods KINE 4226 Principles of Neurorehabilitation KINE 4230 Neuronal Development for Activity and Health KINE 4240 Applied Human Factors KINE 4452 Autonomic function in health and disease. KINE 4500 Neural Control of Movement
Nursing 4-Year Direct Entry	NURS 1510 Reflection and Relational Practice in Professional Nursing NURS 1542 Health and Well-Being NURS 1543 Health Assessment NURS 2513 Ethics and Health Equity in Interprofessional Practice NURS 2535 Pathophysiology, Pharmacology and Knowledge Integration NURS 2546 Health of Families and Social Groups NURS 2546P Practicum NURS 3514 Leadership, Change and Innovation NURS 3510 Partnering with Communities NURS 3510P Practicum NURS 4516 Development as a Professional Nurse NURS 4526 Acute and Complex Health Challenges NURS 4526P Practicum For a full list of courses visit yorku.ca/health/directentry	NURS 3710 Nurses' Experience in Healthcare Environments NURS 3740 Health Care Planning for Communities NURS 3780 Clinical Decision-Making NURS 3920 Reflective Practice through Simulation NURS 4534 Nursing Care of Adults with High Acuity Needs 1 NURS 4535 Nursing Care of Adults with High Acuity Needs 2 NURS 4536 Critical Perspectives in Mental Health Nursing NURS 4537 Therapeutic Modalities in Mental Health NURS 4650 Advanced Paediatric Nursing
2nd Entry	For a full list of courses visit yorku.ca/health/2ndentry	
Internationally Educated Nursing (IEN)	For a full list of courses visit yorku.ca/health/ien	

*This is meant as a sample list of courses and not intended for academic advising purposes.

CONTACT US

Faculty of Health

Keele Campus, York University
426 HNES Building
4700 Keele Street
Toronto, Ontario M3J 1P3

hlthrec@yorku.ca
yorku.ca/health/contact

STAY CONNECTED

health.yorku.ca

X:
x.com/yorkuhealth

YouTube:
youtube.com/FacultyofHealth

Instagram:
instagram.com/yorkuhealth



KEELE CAMPUS VISITS

General campus tours are available through York University's Central Liaison Office.

Book a visit at futurestudents.yorku.ca/tours



health.yorku.ca