

A Year of  
*Momentum*  
2016



# A Year in Review | Building Momentum, Building Foundations

## Dear Friends of the CAP Foundation,

“To help the underserved...” From the perspective of Andrea Pervine-Zaman Ho, MD, addressing health care disparities is one of the elements of pathology practice that inspires her work.

Thanks to increased fundraising in 2016, the CAP Foundation was able to provide **34 awards and grants** to CAP members (with a record number of Leadership Awards). Dr. Ho was one of the Leadership Award recipients. Another of the recipients, Benjamin Cook, MD, explained why he chose a career in pathology. “I knew I had to be part of this critical aspect of medicine.”

The insights and enthusiasm of these new-in-practice pathologists and all of our awardees is a measure of the Foundation’s growing momentum. As you will read in this Annual Report, 2016 was a year of serving the underserved, building foundations, providing leadership and learning opportunities to CAP members, and connecting with patients. Our loyal and generous donors have made it all possible.

In addition to the grants and awards we were able to present, you helped us deliver See, Test & Treat program services to **nearly 700 women** in eight states across the US. In 2016, we exceeded our fundraising goals and strengthened our donor base. New donors were responsible for 15% of 2016 gifts; 17% of 2016 donations coming from donors who increased their gifts. Support came from CAP members, CAP staff, corporations, foundations, and the public.

That’s momentum. With a doubling of corporate and grant funding and a year-over-year 27% increase in total funding, it’s clear that See, Test & Treat is viewed as an important, valuable, and high-quality program by both our corporate partners and by other foundations. As the momentum builds, See, Test & Treat continues to evolve as a pathologist-led health care program that engages communities in preventive medicine through education and screening for cervical and breast cancer.

Also in 2016, your support allowed the Foundation’s Strategic Programs Committee to develop patient education components with modules on breast cancer, cervical cancer, and healthy living styles. We successfully piloted the breast module—in three languages—at the Chicago-area See, Test & Treat program.

The themes of See, Test & Treat apply to the broad work of the Foundation:

*Save Women’s Lives, Empower Families, Connect Communities*

No women in America should die from undiagnosed cervical or breast cancer.

Your support helps to inspire the next generation of pathologists, as reflected by Dr. Ho: “I am able to impact the lives of so many individuals by my dedicated service in the clinical and anatomic laboratory.”

On behalf of our board of directors, our dedicated staff, and our countless volunteers, we thank you. We look forward to your partnership as momentum builds in the coming years.

Sincerely,

**Jennifer Laudadio, MD, FCAP**  
President, CAP Foundation (2015-2016)

**Maryrose Murphy**  
Executive Director, CAP Foundation



# Mission

The CAP Foundation champions patient-centered and humanitarian roles for pathologists. We strive to connect people, especially those in need, to the specialized, life-saving skills of pathologists.

Our programs demonstrate the impact on patient care by the specialty of pathology and are made possible by support of CAP members, staff, corporations, foundations, patient advocacy groups, health institutions, and laboratory communities.



# Purpose

For over 50 years, the CAP Foundation has granted millions of dollars to support pathology education, research, training, and travel grants with the purpose to:

**Enhance** the role of the pathologist in the provision of medical care.

**Advance** pathology through the education of the medical community.

**Encourage** the clinical application of research developments.



# Financial Review

## DECEMBER 31

### Assets

	2016	2015
Cash and Cash Equivalents	\$ 278,328	\$ 225,609
Pledges Receivable	85,733	97,834
Prepaid Expenses	7,109	2,093
Due from CAP	59,818	50,876
<b>Total Current Assets</b>	<b>\$430,988</b>	<b>\$ 376,412</b>
Investments	1,591,991	1,642,476
Pledges Receivable	12,883	63,628
Beneficial Interest in Remainder Trust	718,350	668,542
Property and Equipment:	–	–
<b>Total Assets</b>	<b>\$2,754,212</b>	<b>\$2,751,058</b>

## DECEMBER 31

### Current Liabilities

	2016	2015
Accrued Grants and Awards	\$ 41,190	\$ 50,529
Accounts Payable	12,487	30,088
Deferred Revenue	72,293	70,727
Accrued Other	213,058	153,628
<b>Total Current Liabilities</b>	<b>\$339,028</b>	<b>\$304,972</b>
Note Payable to CAP	175,000	175,000
<b>Total Liabilities</b>	<b>\$ 514,028</b>	<b>\$ 479,972</b>

### Net Assets

Unrestricted	980,358	933,159
Temporarily Restricted	1,140,947	1,055,172
Permanently Restricted	118,879	282,755
<b>Total Net Assets</b>	<b>\$2,240,184</b>	<b>\$2,271,086</b>





# 2016 CAP Foundation



## Board of Directors

**Jennifer Laudadio, MD, FCAP**

President

**Marvin Kogan, Media Directions**

Vice President

**William Valentine Harrer, MD, FCAP**

Secretary-Treasurer

## Directors

Mariana E. Berho, MD, FCAP

Matthew Christensen

Christina Dean, MD (Junior Member Director)

Theresa S. Emory, MD, FCAP

Gail Janes, PhD, MS

Joseph A. Lucci, III, MD

Guillermo G. Martinez-Torres, MD, FCAP

Michael J. Misialek, MD, FCAP

Stephen Myers, CAP Interim CEO

Sonia Robazetti, MD, CCRC

Nicholas T. Serafy Jr.

Karim E. Sirgi, MD, MBA, FCAP

Gail H. Vance, MD, FCAP

Gerald R. Hanson, MD, FCAP, CAP Board of  
Governors Liaison

Bharati S. Jhaveri, MD, FCAP, CAP Board of  
Governors Liaison

## CAP Foundation Staff

**Maryrose Murphy**

Executive Director of the CAP Foundation

Vice President, CAP Membership & Professional  
Development

**Marikay Martin**

Director of Development

**Marci Zerante**

Director, CAP Member Engagement and CAP  
Foundation Programs

**Julia Rankenburg**

Program Development Manager

**Denise Kainrath**

Operations Manager

**Leah Noparstak**

CAP Membership and CAP Foundation  
Programs Specialist



“Today is *my first mammogram.*  
I want to be sure I’m healthy for my children. My cousin had breast cancer. Thank you for helping us.”

# 'Today Is My First Mammogram...'

**From the Bronx to Omaha**, and from Minneapolis to Texas, the CAP Foundation—through its signature program, See, Test & Treat—offers free cancer screening and health education to underserved women across the country.

In 2016, nine See, Test & Treat programs took place in eight cities. Nearly 700 women were served in Ann Arbor, Michigan; Bronx, New York; Omaha, Nebraska; Maywood, Illinois; Brockton, Massachusetts; Conroe, Texas; Minneapolis, Minnesota; and Houston, Texas (two programs). The programs provided 451 Pap tests, 200 HPV tests, and 332 screening mammograms.

Most of the women who were screened had no insurance coverage even though many work two jobs to support their families.

We spoke to women who could not take days off work to get their Pap test and mammogram. It is humbling to hear women convey such challenges as not being able to pay for childcare and transportation. For women facing language or cultural barriers, getting healthcare is a confusing and often frightening experience. Challenged by multiple barriers and with little to no access to the health care system, many of these women had not had mammograms or Pap tests in years, if at all.

Unfortunately, cancer doesn't care whether you have insurance or can find someone to watch your kids when you go to the doctor's office. By offering care that speaks their language and recognizes their struggles, See, Test & Treat becomes an advocate in the fight against cancer.



**In 2016 See, Test & Treat programs**, abnormal Pap results ranged from 10% to 20% and abnormal mammogram results ranged from 6% to 23%, far above national averages. Thankfully a caring group of doctors and other clinicians treated these women either that day or immediately following the program.

Every See, Test & Treat program takes place in a hospital or clinic that has agreed to create an electronic medical record for each woman and commits to ensure follow-up care for all women who participate. Women with abnormal screening results schedule their next appointments on the same day. Many others schedule appointments for other health care needs that come to light in their visits—from high blood pressure and diabetes care to psychological counseling and domestic violence support.

"See, Test, & Treat is an invaluable service to the patients and the community. It offers ready access to life-saving screenings," said Mohammad Atieh, DO, MS, FCAP, one of the volunteers at the Loyola University Medical Center program in Maywood, Illinois.

Dr. Atieh was just one of a remarkable group of people. In all, more than 600 volunteers donated nearly 5,000 hours of their time to plan and help manage the programs. In addition to pathologists, the volunteer corps included medical technologists, physicians from other specialties, nurses, coordinators, and many others.

Above all, See, Test & Treat wouldn't exist—and the underserved women would not be screened—without the Foundation's generous donors. CAP members and employees, as well as corporations and non-profit organizations, all support the Foundation. Donations of this type create a fund-raising momentum that will help support expansion of the number of programs in the coming years. Increased recognition of See, Test & Treat as a unique cancer prevention program, plus the dedication of our donors translates into care for the underserved.

"Today is my first mammogram. I want to be sure I'm healthy for my children. My cousin had breast cancer. Thank you for helping us," said Abigail. Her gratitude extends to the hundreds of pathologists and other volunteers who cared for patients at See, Test & Treat programs in 2016.





**See, Test & Treat** is a free cancer screening and health education program that brings the power of diagnostic medicine to underserved communities to:

**Save Women's Lives** through early detection

**Empower Families** through preventive health care

**Connect Communities** with their health care providers

In its first years of growth, See, Test & Treat has met the highest standards of quality, delivered powerful impacts in dozens of communities, and proven its ability to reach greater scale. Now, it's time to take this life-saving program to the next level through the power of philanthropic investment.

March 12, 2016 | Ann Arbor, MI


### St. Joe Mercy Medical Center

This program focused on the Latina community of Washtenaw County, based on a local study that showed the average age of death of Latinos is 17 years younger than their white counterparts and 6 years younger than African American residents.

**Program Lead:** Sharon K. Bihlmeyer, MD, FCAP

 **45** women screened

 **99** volunteers

 **12%** of the women screened had positive HPV results

## 'Tell Us Three Things You Learned Today'

"I learned what healthy cells and cancer cells look like under the microscope."

*I learned the connection between the HPV virus and cervical cancer.*

"I learned that diet and exercise are important to a healthy heart and that I should stop smoking."

*I learned that a mammogram isn't as painful as people say.*

"I learned the importance of breast self-exams."

*I learned how important routine health screenings are to your overall health.*

"I learned how we transmit HPV."



May 14, 2016 | Bronx, NY


### Montefiore Medical Center

The Bronx has a higher prevalence of late stage cancer diagnosis and a large percentage of its population lacks any linkage to a primary care network. 28.5% of people in the Bronx are below the poverty level, compared to 14.5% of New York City overall.

**Program Lead:** Michael Prystowsky, MD, PhD, FCAP

 **22** women screened

 **48** volunteers

 **10%** of the women receiving Pap tests had abnormal results

July 9, 2016 | Omaha, NE

### Charles Drew Family Health Center

More than two-thirds of African American families with children in Omaha are led by a single female head of household. Also, the community is so diverse that Charles Drew is working to translate materials into Burmese, Karin, Mai Mai, Spanish, and Arabic.

**Program Lead:** Gene N. Herbek, MD, FCAP

 **40** women screened

 **94** volunteers

 **23%** of women screened had abnormal mammograms

"I learned that  
*it's okay to put yourself first.*  
As women, we are used to taking care of our family's needs first. Women need to take care of themselves so that we can be here for our families."





## Changing Behaviors

See, Test & Treat is about screening, of course, but it's also about encouraging participants to lead healthier lifestyles. Given a list of options, participants responded to the prompt, "As a result of the information/education I received today I will..." Here are the top four choices.

1. Perform self-breast exams.
2. Get regular Pap tests.
3. Eat more healthy foods.
4. Share information with friends and family.

### 'What did you like about this event?'

"I have often felt embarrassed that I have no insurance. Here [at See, Test & Treat], everyone treated me with kindness and care. *I felt important and comfortable.*"

*Today was... A-MAZING!!!*

"I got education that helped me understand where and how often to get checkups and screening."  
*The people were great!*

August 27, 2016 | Maywood, IL

## Loyola University Medical Center

This Chicago-area population is located in a medically underserved community, characterized by high unemployment. 36% of the nearby population is either uninsured or can't afford Medicaid co-pays.

**Program Lead:** Eva M. Wojcik, MD, FCAP



**59** women screened



**51** volunteers



**28%** had abnormal mammograms;  
**10 women** were referred to followup care

October 1, 2016 | Conroe, TX

## Lone Star Family Health Center

For many women, any number of barriers make it difficult or impossible to get screened regularly. In Montgomery County, location of this program, more than 20% of adults report being unable to see a doctor due to financial constraints.

**Program Lead:** Kyle L. Eskue, MD



**82** women screened



**147** volunteers



**8%** of the women screened had abnormal Pap test results

October 1, 2016 | Brockton, MA

## Signature Healthcare

A study reported that local women originally from Cape Verde and Brazil have the highest rate of inadequate or no insurance coverage. These women also lag behind in the use of medical services compared to the general Brockton-area population.

**Program Lead:** Desiree A. Carlson, MD, FCAP



**21** women screened



**30** volunteers



**7%** of women screened had abnormal mammograms

# Cancer Screening Buys Peace of Mind

## The Story of Abigail and Juana

**Abigail is 34 years old.** The mother of three children, she lives in Maywood, Illinois. When she lived in Mexico, Abigail had a professional career and was surrounded by supportive parents who helped care for her children while she was at work. Today Abigail stays at home to care for her children because she can't earn enough money to pay for childcare. She has had worries about her health ever since she was diagnosed with endometriosis and her cousin was diagnosed with breast cancer.

**Juana, 33,** works as a health home aide in the Bronx, New York. She witnessed her mother's battle with breast cancer—and then her older sister, Julia, was faced with a breast cancer diagnosis. Julia's heartbreaking journey included a double mastectomy and chemotherapy, just two years after her mother's mastectomy.

Neither woman has any health insurance; both received their first-ever mammogram at a See, Test & Treat event.

For Abigail, insurance coverage is out of reach. The cost of being included on her husband's plan would be more than her husband's entire take-home pay. The possibility of cervical cancer going untreated is among her greatest fears, but the staff at Loyola University Medical Center, not far from where Abigail lives, managed to ease some of her anxiety.

"At first I was nervous; but when I stepped in the door and a doctor in a lab coat greeted me with a smile and spoke Spanish to me, *I was relieved.*"

See, Test & Treat now reaches women in 10 languages, expanding the accessibility that makes the program stand out.

For women like Juana, a packed work schedule can make it easy to fall behind a schedule of regular cancer screenings. The cost of peace of mind can add up quickly. With women in her immediate family fighting

breast cancer themselves, Juana wanted an affordable option to be sure of her own health.

"I'm still young, but I know that I may be at risk," Juana said at the program held at Montefiore Medical Center in the Bronx. While waiting for her results, Juana met with educators from Latina SHARE, Bronx Community Health Network, HealthFirst, and Ridgewood Savings Bank. Also, a Montefiore dietician explained ways to improve overall wellness and prevent disease through nutrition.

Though every See, Test & Treat reaches a unique set of women, the validated, pathologist-led model holds true no matter where help is needed. As members of their communities and families, Juana and Abigail both needed a program that could assure them that cervical and breast cancer would not become a threat to their lives. They got the chance to meet with representatives to discuss options for affordable coverage.

Because of the donations made to the CAP Foundation and the selfless work of many volunteers and health care professionals, the cost of peace of mind for Abigail and Juana came down to zero.





October 4-5-6, 2016 | Minneapolis, MN

### NorthPoint Health and Wellness Center

See, Test & Treat volunteers at NorthPoint put the diverse community (Latina, African American, Hmong, and Somali) at ease by using language interpreters and wearing culturally relevant clothing.

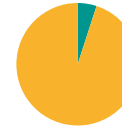
**Program Lead:** Bradley M. Linzie, MD, FCAP



151 women screened



44 volunteers



5% of the women screened tested positive for HPV

October 8, 2016 | Houston, TX

### Sunnyside Health Center

This program was targeted to the area's high percentage of lower-income people. Many people in this population have no jobs, or they are underpaid jobs and work long hours. They have little access to either the health care system or educational resources.

**Program Leaders:** Donna M. Coffey, MD, FCAP, Patricia Chevez-Barrios, MD, FCAP, Joseph A. Lucci, III, MD (CAPF BOD), Sonia C. Robazetti, MD, CCRC (CAPF BOD)



104 women screened



50 volunteers



9% of the women screened had abnormal mammograms

October 29, 2016 | Houston, TX

### UT Physicians Bayshore Multispeciality Clinic

A lack of information about the HPV vaccine is putting an at-risk population to an even greater disadvantage when the main care-giver (a woman) is lost due to a preventable disease.

**Program Leaders:** Jing Liu, MD, PhD, FCAP, Joseph A. Lucci, III, MD (CAPF BOD), Sonia C. Robazetti, MD, CCRC (CAPF BOD)



146 women screened



54 volunteers



26% of the women screened had abnormal mammograms; 11 women were referred for followups, 15 colposcopies were performed on-site

# Lack of Preventive Care Drives Outcomes

Disadvantaged women face a significantly higher mortality rate from preventable cancers than the general population. In underserved communities, both urban and rural, many women live without regular health care, increasing their risk of late diagnoses.

Cervical cancer is completely preventable while breast cancer, caught early, provides the best chance for survival. Lack of preventive care and timely treatment drive these outcomes.

African American women are

**40%** more likely to **die of breast cancer**, primarily as a result of late diagnoses.

Latina women in America are

**60%** more likely to **develop cervical cancer** and **40%** more likely to **die from it**.

Southeast Asian women have

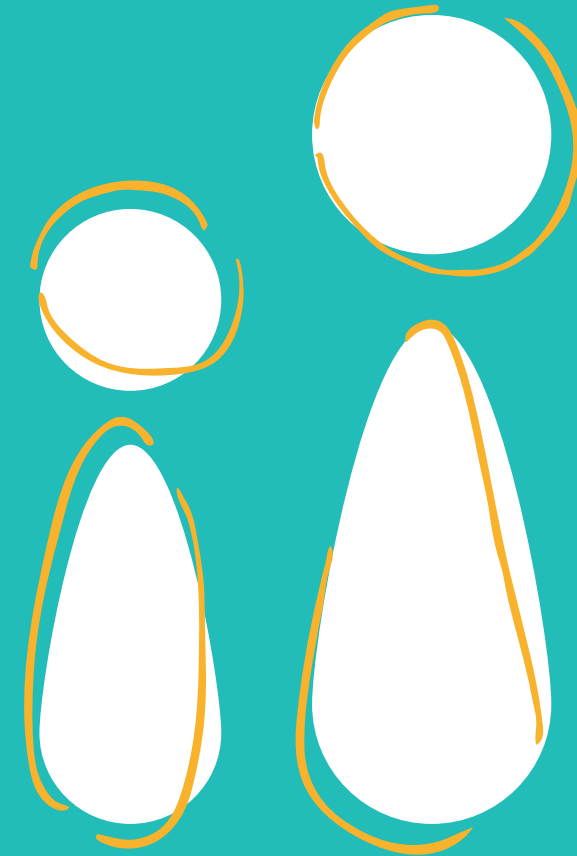
↑ higher invasive **cervical cancer** incidence rates and  
↓ lower **Pap testing frequencies** than most other ethnic groups in the US.

Cervical cancer rates are

**5X** five times higher among **Vietnamese American women** than white, non-Hispanic women.

States such as **Mississippi** and **New York** that have a

↓ **low incidence** of breast and cervical cancer have the  
↑ **highest death rates** from each compared to other states in the nation.





## Breaking Down Barriers to Health Care

**Women play vital roles in their families, communities, and workplaces.**

The importance of their preventive care is beyond measure. In fact, studies demonstrate that women make approximately 80% of family health decisions. Your generous donations help the CAP Foundation connect women to the health care system.

The equation is sad but true. Weak social support leads to infrequent screening and that adds up to cancers that are discovered late. **See, Test & Treat** changes the equation for many women like these:

- Working mothers who can't get time off work for their own doctor's appointments
- Mothers who place their children's health care needs before their own
- Uninsured women who can't afford to go to the doctor
- Women facing cultural or language barriers
- Women who lack regular access to quality health care in their communities

*Your support* helps to provide the social support that leads to better health for underserved women.

# The Herbek Humanitarian Award

## Navigating Patient Support for All Ages

Sang Wu, MD, FCAP, is on a mission to form stronger bonds between at-risk women and health care resources. Partnering with the Vietnamese Health Association of North Texas and the Vietnamese American Medical Association, he has a plan for a patient navigator program that can help a vulnerable population get the care they need, when they need it.

“My plan is to introduce a patient navigator, or ‘community health worker,’ who can personally engage individuals and families lacking access to health care,” Dr. Wu said. “This person could share knowledge of specific programs, advocate for community support, and overall make people feel empowered to manage their health.”

Dr. Wu led the first See, Test & Treat program in Dallas, and he saw firsthand how many women forego cervical and breast cancer screenings because of cultural and financial barriers.

Vietnamese women face cervical cancer incidence and morbidity rates five times higher than other ethnicities. An effective patient navigator can make the crucial difference to underserved women and their families.

“Anything you can do to represent and stand up for the underserved communities in Dallas is a life-saving operation,” Dr. Wu said. “And even for smaller matters of

healthy living and preventive measures, one reliable voice can have an immense effect.”

Dr. Wu submitted his proposal to the CAP Foundation and received the Gene and Jean Herbek Humanitarian Award to kick-start his mission. The funding will go toward paying a new part-time worker who will hold workshops and seminars in the Dallas-Fort Worth area.

“If this community health worker is as successful as we hope, we could share our plan with other cities in Texas and even nationwide,” Dr. Wu said.

“It would be a *huge victory* if neighborhoods of different ethnicities and cultures could each have their own lifeline to the world of health care.”

The second project Dr. Wu will lead with award funding involves the creation and publication of a children’s activity book to entertain and educate children who accompany their mothers to See, Test & Treat programs. The book will include puzzles, activities, and coloring pages that explain what a pathologist does, how they find disease, and how they work together with other doctors.

“Every See, Test & Treat event is a great opportunity to build relationships with the community, and that can include children too,” Dr. Wu said. “Who knows—a child flipping through this book could grow up to become a pathologist someday.”

## The Herbek Humanitarian Award: Sang Wu, MD, FCAP

Dr. Wu is a board-certified anatomic and clinical pathologist with North Dallas Pathology Services, and is the Medical Director for Laboratory Services at Texas Health Presbyterian Hospital, Denton, Texas. His award was presented by CAP President Richard C. Friedberg, MD, PhD, FCAP, and CAP Foundation President Jennifer Laudadio, MD, FCAP.

**Project:** Community Health/Patient Navigator Program/Children’s Activity Book





# The Next Generation of Pathologists

Leadership development awards foster the next generation of pathologists, honoring young physicians with a grant to attend CAP meetings and events, immersing them in issues that face pathologists and patients. Their passion for pathology and leadership in the medical community is evident in their statements.



“I am interested in health policy reform...and in growing the visibility of pathologists as integral members of the medical team.”

**Jordan Baum, MD**  
*New York Presbyterian Hospital  
Weill Cornell Medicine  
New York, New York*



“I am able to impact the lives of so many individuals by my dedicated service in the clinical and anatomic laboratory.”

**Andrea Pervine-Zaman Ho, MD**  
*University of Missouri/Truman Medical Center  
Kansas City, Missouri*



“It is easy in pathology to feel disconnected from the patient bedside. See, Test & Treat allows for pathologists to directly interact with patients and explain pathologists’ role in patient care.”

**David A. Cohen, MD**  
*Houston Methodist Hospital  
Houston, Texas*



“Behind every slide is a patient life that depends on my diagnostic skills.”

**Sarmad H. Jassim, MD**  
*Metrohealth Medical Center  
Cleveland, Ohio*



“I observed that pathologists and the laboratory were critical in the care and diagnosis of the patient with little margin for error. I knew I had to be part of this critical aspect of medicine.”

**Benjamin Cook, MD**  
*Madigan Army Medical Center  
Tacoma, Washington*



“Pathology is a perfect bridge between science and clinical medicine. [We have a] myriad of opportunities to further our understanding of how acutely our work as pathologists impacts patients’ lives.”

**Rebecca C. Obeng, MD, PhD, MPH**  
*Emory University  
Atlanta, Georgia*



“I serve our patients by addressing challenges that may be less apparent to patient-facing physicians, like building systems to ensure quality and optimize care for the individual.”

**Daniel S. Herman, MD, PhD**  
*University of Washington  
Seattle, Washington*



“I always wanted to dig deeper and ask ‘why?’ when seeing patients on the wards. Pathology offers the opportunity to take a closer look to answer this question.”

**Amy Thommasen, MD, BSc**  
*University of Calgary  
Calgary, Alberta*

## Informatics Awards

The field of pathology has experienced dramatic growth in the area of informatics, clinical applications, standardized reporting and laboratory test utilization, electronic health records, workflow, and patient safety. This travel award (up to \$1,200) is open to CAP Junior Members (pathology residents) to attend informatics-based educational sessions at the CAP's annual meeting. The award is made possible through the generosity of the Dito family and donors to the William R. Dito, MD, Fund for Informatics.

### Informatics Awardees

**Shohei Ikoma, MD**

*The University of Texas Health Science Center  
San Antonio, Texas*

**Justin Juskewitch, MD, PhD**

*Mayo Clinic  
Rochester, Minnesota*

**Andrew P. Norgan, MD, PhD**

*Mayo Clinic  
Rochester, Minnesota*

**Shyam Prajapati, DO**

*Mount Sinai St. Luke's  
New York, New York*

## Translational Diagnostics Award

Delivering four weeks of hands-on training at Ventana Medical Systems, in Tucson, Arizona, this \$5,000 CAP Foundation award continues to shape career paths for today's young pathologists.

### 2016 Recipients

**Remegio J. Maglantay, Jr., MD**

*SUNY Downstate Medical Center  
Brooklyn, New York*

**Richard K. Yang, MD, PhD**

*Wisconsin Institute for Medical Research  
Madison, Wisconsin*

## 2016 John H. Rippey Grant for Laboratory Quality Assurance

Honoring the memory of John H. Rippey, MD, this grant funds up to \$5,000 for innovative projects related to quality assurance, quality improvement in pathology, or patient safety, which result in improved patient care. Dr. Rippey was an advocate of the CAP and was devoted to improving laboratory quality assurance.

### CAP Fellow Awardees

**Yen-Michael S. Hsu, MD, PhD, FCAP**

*Weill Cornell Medical College  
New York, New York*

**Laura J. Tafe, MD, FCAP**

*Dartmouth-Hitchcock Medical Center  
Lebanon, New Hampshire*

### CAP Junior Member Awardee

**Thomas Durant, MD**

*Yale School of Medicine  
New Haven, Connecticut*

## Geraldine Colby Zeiler Awards

Each year, these educational grants are provided to cytotechnology students, in collaboration with the American Society of Cytopathology awards.

### 2016 Awardees

**Elisa Levito**

*Jefferson College of Health Professions  
Philadelphia, Pennsylvania*

**Nicole Minca**

*Cleveland Clinic School of Cytotechnology  
Cleveland, Ohio*

**Daniel Robinson**

*Medical Education and Training Campus (METC)  
Cytotechnology Program  
Fort Sam Houston, Texas*

**Mari Short**

*Medical Education and Training Campus (METC)  
Cytotechnology Program  
Fort Sam Houston, Texas*

**Kelsey Snyder**

*Roswell Park Cancer Institute  
Buffalo, New York*

## William R. Bynum, MD, Scholarship Fund

On behalf of the Missouri Society of Pathologists, this grant supports the advancement of medical technologists in their final academic year.

### 2016 Recipients

**Maggie Hildebrand**

*Saint Louis University Cytotechnology Program  
St. Louis, Missouri*

**Michael P. Noble**

*Cox Health School of Medical Technology  
Springfield, Missouri*



# 2016 Donor Honor Roll

Through the honor roll, the CAP Foundation expresses its deepest gratitude to the following members, friends, staff, corporations, and foundations for the support they have generously given to the CAP Foundation during 2016 and throughout their lifetime.

## Lifetime Giving of \$1,000,000 or more

William B. Zeiler, MD, FCAP  
College of American Pathologists

## Lifetime Giving of \$250,000 or more

Dr. and Mrs. Daniel J. Hanson  
The Serafy Foundation  
*Seracon Diagnostics Company*  
*Nicholas T. Serafy Jr.*

University of Pittsburgh Medical Center  
*Michael Becich, MD, PhD, FCAP*

## Lifetime Giving of \$100,000 or more

Abbott Laboratories  
The Coleman Foundation, Inc.  
Genentech Inc.  
Los Angeles Society of Pathologists  
*James F. Keefe, MD, FCAP*  
Olympus America, Inc.  
Rippey Fund Donors  
*Southwest and Great Lakes Regional Quality Groups*  
Ventana Medical Systems, Inc.

## Lifetime Giving of \$50,000 or more

Dr. and Mrs. Stephen N. Bauer  
Dr. Robert L. Breckenridge  
Dr. and Mrs. Gene N. Herbek  
Dr. Rebecca L. Johnson and Mr. Michael A. Kelly  
The Esther & Hyman Rapport Philanthropic Trust  
*Roger D. Klein, JD, MD, FCAP*  
Dr. and Mrs. Stanley J. Robboy  
Dr. and Mrs. Jared N. Schwartz  
Aperio

Baxter Healthcare Corporation  
Becton Dickinson  
Community Memorial Foundation  
Hologic

Media Directions Creative Group  
*Marvin Kogan*  
Robert Wood Johnson Foundation

## Lifetime Giving of \$40,000 or more

Dr. Desiree A. Carlson and Mr. Stephen P. Sullivan  
Dr. and Mrs. Edward P. Fody  
Dr. and Mrs. Richard C. Friedberg  
Gail R. Janes, PhD  
*In memory of Chester J. Herman, MD, FCAP*  
Mr. and Mrs. Charles J. Roussel  
Dr. and Mrs. Jay F. Schamberg  
Bayer Diagnostics  
Consultants for Pathology and Laboratory Medicine  
McKesson Information Solutions, Inc.  
Pathology Associates of Albuquerque PA  
Quest Diagnostics, Inc.  
Sakura Finetek USA, Inc.  
US LABS/Esoterix

## Lifetime Giving of \$30,000 or more

E. Randy Eckert, MD, FCAP  
Dr. and Mrs. Eric F. Glassy  
Dr. and Mrs. William V. Harrer  
Dr. and Mrs. Andrew Horvath  
Dr. and Mrs. V.O. Speights Jr.  
Dr. Emily E. Volk and Dr. Daniel Mais  
CVS Health  
Pathology Education Consortium  
*Bruce Friedman, MD, FCAP*

Researchand Diagnostic Systems, Inc.  
Smith Kline Beecham  
The University of Michigan

## Lifetime Giving of \$20,000 or more

Paul Bachner, MD, FCAP  
Dr. and Mrs. David J. Blomberg  
Kris L. Challapalli, MD, FCAP  
Kim A. Collins, MD, FCAP  
Dr. Patricia A. Devine and Mr. William Phinney  
Dr. and Mrs. Alan F. Frigy  
Stephen A. Geller, MD, FCAP  
Mary E. Kass, MD, FCAP  
Dr. and Mrs. Alfred Lui  
John G. Newby, MD, FCAP  
Dr. and Mrs. Dennis O'Neill  
Thomas G. Puckett, MD, FCAP  
Alvin M. Ring, MD, FCAP  
The Daniel Seckinger Trust  
*In memory of Daniel Seckinger, MD, FCAP*  
Dr. Ronald L. Weiss and Ms. Peggy A. Ahlin  
Dr. and Mrs. Thomas M. Wheeler  
Robert S. Zirl, MD, FCAP  
Abbott Molecular  
Chrisope/Remel Technology Inc.  
Misys Healthcare Systems  
NTT Data  
Pfizer Global Medical Relations  
Roche Diagnostics Corporation  
Strategic Offsites Group, Inc.  
Streck Laboratories, Inc.

## The Herbek See, Test & Treat® Founders Circle \$25,000 Donors

Dr. and Mrs. Stephen N. Bauer  
Dr. Robert L. Breckenridge

Dr. Patricia A. Devine and Mr. William Phinney  
Dr. and Mrs. Edward P. Fody  
Dr. and Mrs. Richard C. Friedberg  
Dr. and Mrs. Gene N. Herbek  
Dr. and Mrs. Andrew E. Horvath  
Dr. Rebecca L. Johnson and Mr. Michael A. Kelly  
Dr. and Mrs. Stanley J. Robboy  
Mr. and Mrs. Charles J. Roussel  
Dr. and Mrs. Jay F. Schamberg  
Dr. and Mrs. Jared N. Schwartz  
Dr. Emily E. Volk and Dr. Daniel D. Mais

## The Herbek See, Test & Treat® Founders Circle \$15,000 Donors

Dr. and Mrs. David J. Blomberg  
Dr. Desiree A. Carlson and Mr. Stephen P. Sullivan  
Alfred W. Campbell, MD, FCAP  
Dr. and Mrs. Alan F. Frigy  
Dr. and Mrs. Eric F. Glassy  
Dr. Richard and Ms. Patsy C. Gomez  
Dr. and Mrs. William V. Harrer  
Dr. Bharati S. and Dr. Suketu Jhaveri  
Kathryn T. Knight, MD, FCAP  
Dr. Jennifer Laudadio and Mr. Ethan Igleheart  
Dr. and Mrs. Alfred Lui  
James J. Navin, MD, FCAP  
Dr. and Mrs. Dennis G. O'Neill  
C. Dean Pappas, MD, FCAP  
Dr. Michael B. and Dr. Janet H. Prystowsky  
Dr. and Mrs. V.O. Speights Jr.  
Dr. Elizabeth A. Wagar and Mr. Michael Gerson  
Dr. Ronald L. Weiss and Ms. Peggy Ahlin  
Dr. and Mrs. Thomas M. Wheeler

Drs. R. Bruce Williams and Susan Van Hook Williams

## The following are individuals who were honored or remembered in 2016 with a gift:

### Noel Adachi

*Dr. and Mrs. Richard C. Friedberg*

### Mark Adelsberg

*Emily E. Volk, MD, MBA, FCAP*

### Timothy Craig Allen, MD, JD, FCAP

*Emily E. Volk, MD, MBA, FCAP*

### Dr. and Mrs. Timothy Craig Allen

*Dr. and Mrs. Richard C. Friedberg*

### Julie Anbinder

*Pamela S. Mix*

### Chester Andrzejewski Jr., MD, PhD

*Dr. and Mrs. Richard C. Friedberg*

## B

### Andie Baggett

*Pamela S. Mix*

### Aline Bailleul

*Dr. and Mrs. Richard C. Friedberg*



**Mariana E. Berho, MD, FCAP**  
*Jennifer Laudadio, MD, FCAP*

**Brooke Billman**  
*Pamela S. Mix*  
*Sally Weintraub*

**George G Birdsong, MD, FCAP**  
*Emily E. Volk, MD, MBA, FCAP*

**W. Stephen Black-Schaffer, MD, FCAP**  
*Emily E. Volk, MD, MBA, FCAP*

**Sarah Bogdan**  
*Emily E. Volk, MD, MBA, FCAP*

**Robert Bourgeault**  
*Dr. and Mrs. Richard C. Friedberg*

**Cynthia Lee Bowman, MD, FCAP**  
*Dr. and Mrs. Richard C. Friedberg*

**Laura Brigandi**  
*Emily E. Volk, MD, MBA, FCAP*

**C**

**Q. Jackie Cao, MD, PhD, FCAP**  
*Dr. and Mrs. Richard C. Friedberg*

**Diana Marcella Cardona, MD, FCAP**  
*Emily E. Volk, MD, MBA, FCAP*

**Matthew Christensen**  
*Jennifer Laudadio, MD, FCAP*

**Michael B. Cohen, MD, FCAP**  
*Emily E. Volk, MD, MBA, FCAP*

**Lisa L. Cole, MD, FCAP**  
*Dr. and Mrs. Richard C. Friedberg*

**Liz Cramer**  
*Emily E. Volk, MD, MBA, FCAP*

**Giovanna M. Crisi, MD, PhD, FCAP**  
*Dr. and Mrs. Richard C. Friedberg*

**Barbara A. Crothers, DO, FCAP**  
*Emily E. Volk, MD, MBA, FCAP*

**Dan Conners**  
*Pamela S. Mix*

**D**

**Jennifer Dahmm**  
*Anonymous*

**Rajesh Chandra Dash, MD, FCAP**  
*Emily E. Volk, MD, MBA, FCAP*

**Drew Davis**  
*Pamela S. Mix*  
*Sally Weintraub*

**Christina Dean, MD**  
*Jennifer Laudadio, MD, FCAP*

**Maurine Dennis**  
*Emily E. Volk, MD, MBA, FCAP*

**Katherine Dolan**  
*Anonymous*

**Denise Driscoll**  
*Dr. and Mrs. Richard C. Friedberg*

**Wayne H. Duke, MD, FCAP**  
*Dr. and Mrs. Richard C. Friedberg*

**Helena Duncan**  
*Emily E. Volk, MD, MBA, FCAP*

**E - F**

**Theresa S. Emory, MD, FCAP**  
*Jennifer Laudadio, MD, FCAP*

**Evrin Erdogan, PhD**  
*Dr. and Mrs. Richard C. Friedberg*

**Karen Fassler**  
*Emily E. Volk, MD, MBA, FCAP*

**Darren Fenwick**  
*Emily E. Volk, MD, MBA, FCAP*

**George Fiedler, MBA**  
*Dr. and Mrs. Richard C. Friedberg*  
*Jennifer Laudadio, MD, FCAP*

**Charles Fiegl**  
*Emily E. Volk, MD, MBA, FCAP*

**Roxanne R. Florence, MD, FCAP**  
*Dr. and Mrs. Richard C. Friedberg*

**Katya R. Ford, MD, FCAP**  
*Dr. and Mrs. Richard C. Friedberg*

**Dr. and Mrs. Richard C. Friedberg**  
*Mr. and Mrs. Charles J. Roussel*  
*Emily E. Volk, MD, MBA, FCAP*

**Jonathan K. Freeman, MD, FCAP**  
*Dr. and Mrs. Richard C. Friedberg*

**G**

**David L. Gang MD, FCAP**  
*Dr. and Mrs. Richard C. Friedberg*  
*Emily E. Volk, MD, MBA, FCAP*

**Wayne Lee Garrett, DO, FCAP**  
*Emily E. Volk, MD, MBA, FCAP*

**Eric F. Glassy, MD, FCAP**  
*Emily E. Volk, MD, MBA, FCAP*

**Dr. and Mrs. Eric F. Glassy**  
*Dr. and Mrs. Richard C. Friedberg*

**Patrick E. Godbey, MD, FCAP**  
*Emily E. Volk, MD, MBA, FCAP*

**Dr. and Mrs. Patrick E. Godbey**  
*Dr. and Mrs. Richard C. Friedberg*

**Richard R. Gomez, MD, FCAP**  
*Emily E. Volk, MD, MBA, FCAP*

**Dr. and Mrs. Richard R. Gomez**  
*Dr. and Mrs. Richard C. Friedberg*

**Greg Gleason**  
*Dr. and Mrs. Richard C. Friedberg*

**Davon Gray**  
*Emily E. Volk, MD, MBA, FCAP*

**David Gross**  
*Emily E. Volk, MD, MBA, FCAP*

**Michael Giuliani**  
*Emily E. Volk, MD, MBA, FCAP*

**H**

**Linda Hadley**  
*Dr. and Mrs. Richard C. Friedberg*

**Gerald R. Hanson, MD, FCAP**  
*Jennifer Laudadio, MD, FCAP*  
*Emily E. Volk, MD, MBA, FCAP*

**Dr. and Mrs. Gerald R. Hanson**  
*Dr. and Mrs. Richard C. Friedberg*

**Betsy Harder**  
*Dr. and Mrs. Richard C. Friedberg*

**William Valentine Harrer, MD, FCAP**  
*Jennifer Laudadio, MD, FCAP*

**Amanda Erin Haynes, DO, FCAP**  
*Emily E. Volk, MD, MBA, FCAP*

**Jean M. Henneberry, MD, FCAP**  
*Dr. and Mrs. Richard C. Friedberg*

**Chester J. Herman, MD, FCAP**  
*Gail R. Janes, PhD*

**Daniel Steven Herman, MD, PhD**  
*Emily E. Volk, MD, MBA, FCAP*

**Jody E. Hooper, MD, FCAP**  
*Emily E. Volk, MD, MBA, FCAP*

**Andrew E. Horvath, MD, FCAP**  
*Emily E. Volk, MD, MBA, FCAP*

**Jennifer L. Hunt, MD, MEd, FCAP**  
*Emily E. Volk, MD, MBA, FCAP*

**Dr. Jennifer L. Hunt and Mr. Johnnie Chung**  
*Dr. and Mrs. Richard C. Friedberg*

**John P. Hunt, MD, FCAP**  
*Dr. and Mrs. Richard C. Friedberg*

**Beth Hurley**  
*Pamela S. Mix*

**J**

**Gail R. Janes, PhD, MS**  
*Jennifer Laudadio, MD, FCAP*

**Bharati S. Jhaveri, MD, FCAP**  
*Jennifer Laudadio, MD, FCAP*  
*Emily E. Volk, MD, MBA, FCAP*

**Dr. Bharati S. Jhaveri and Dr. Suketu Jhaveri**  
*Dr. and Mrs. Richard C. Friedberg*

**Vandita P. Johari, MD, FCAP**  
*Dr. and Mrs. Richard C. Friedberg*

**Pamela Johnson**  
*Emily E. Volk, MD, MBA, FCAP*

**K**

**Denise Kainrath**  
*Jennifer Laudadio, MD, FCAP*

**Donald Steven Karcher, MD, FCAP**  
*Dr. and Mrs. Richard C. Friedberg*  
*Emily E. Volk, MD, MBA, FCAP*

**Rukmini Modem Kashikar, MD, FCAP**  
*Dr. and Mrs. Richard C. Friedberg*

**Anthony A. Killeen, MD, PhD, FCAP**  
*Emily E. Volk, MD, MBA, FCAP*

**Todd Klemp**  
*Emily E. Volk, MD, MBA, FCAP*

**Marvin Kogan**  
*Jennifer Laudadio, MD, FCAP*

**Kristen Kolb**  
*Dr. and Mrs. Richard C. Friedberg*

**Richard H. Knierim, MD, FCAP**  
*Emily E. Volk, MD, MBA, FCAP*

**Dr. and Mrs. Richard H. Knierim**  
*Dr. and Mrs. Richard C. Friedberg*

**Kathryn Teresa Knight, MD, FCAP**  
*Dr. and Mrs. Richard C. Friedberg*  
*Emily E. Volk, MD, MBA, FCAP*

**L**

**Dr. Jennifer Laudadio and Mr. Ethan Igleheart**  
*Dr. and Mrs. Richard C. Friedberg*  
*Dr. and Mrs. Gerald R. Hanson*  
*Jennifer L. Hunt, MD, FCAP*  
*Emily E. Volk, MD, MBA, FCAP*

**Joseph A Lucci III, MD**  
*Jennifer Laudadio, MD, FCAP*

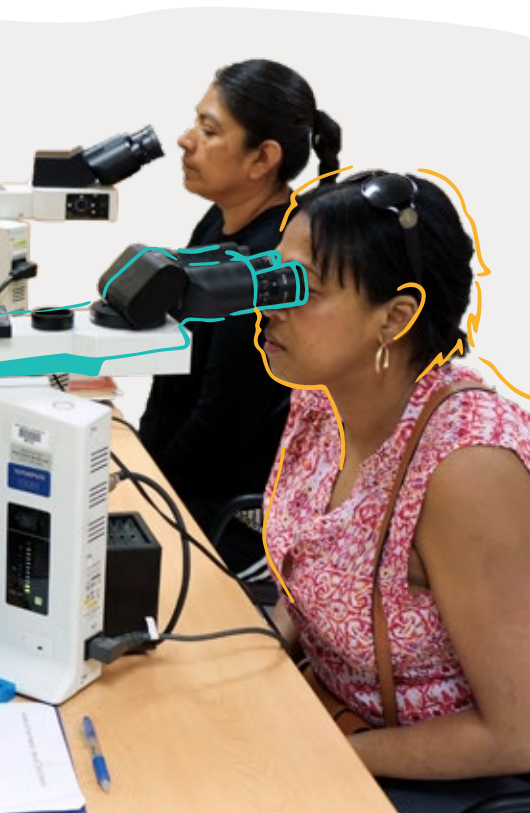
**Gretchen Lussier**  
*Dr. and Mrs. Richard C. Friedberg*

**M**

**Marion Malone and George Molnar**  
*Jennifer Laudadio, MD, FCAP*  
*Kerry Lydon*  
*Emily E. Volk, MD, MBA, FCAP*

**Karen Manzella**  
*Elizabeth Cramer*

**Marikay Martin, MBA**  
*Dr. and Mrs. Richard C. Friedberg*  
*Jennifer Laudadio, MD, FCAP*  
*Emily E. Volk, MD, MBA, FCAP*



**Guillermo G. Martinez-Torres, MD, FCAP**  
*Jennifer Laudadio, MD, FCAP*

**Nadya Marusheva**  
*Pamela S. Mix*

**Tari McDermand**  
*Dr. and Mrs. Richard C. Friedberg*  
*Pamela S. Mix*  
*Emily E. Volk, MD, MBA, FCAP*  
*Sally Weintraub*

**Jill A. McGuire**  
*Pamela S. Mix*  
*Emily E. Volk, MD, MBA, FCAP*  
*Sally Weintraub*

**Michael John Misialek, MD, FCAP**  
*Jennifer Laudadio, MD, FCAP*

**John A. Minielly, MD, FCAP**  
*C. Terrence Dolan, MD, FCAP*

**Pamela S. Mix**  
*Dr. and Mrs. Richard C. Friedberg*  
*Emily E. Volk, MD, MBA, FCAP*  
*Sally Weintraub*

**Franklin R. Moore, MD, PhD, FCAP**  
*Dr. and Mrs. Richard C. Friedberg*

**Luis A. Moral, MD, FCAP**  
*Dr. and Mrs. Richard C. Friedberg*

**James D. Mueller, MD, PhD, FCAP**  
*Dr. and Mrs. Richard C. Friedberg*

**Maryrose T. Murphy, MBA, MT(ASCP)**  
*Dr. and Mrs. Richard C. Friedberg*  
*Jennifer Laudadio, MD, FCAP*  
*Emily E. Volk, MD, MBA, FCAP*

**Stephen R. Myers**  
*Jennifer Laudadio, MD, FCAP*  
*Emily E. Volk, MD, MBA, FCAP*

**Mr. and Mrs. Stephen R. Myers**  
*Dr. and Mrs. Richard C. Friedberg*

**Jonathan Louis Myles, MD, FCAP**  
*Emily E. Volk, MD, MBA, FCAP*

## N – O

**Raouf E. Nakhleh, MD, FCAP**  
*Emily E. Volk, MD, MBA, FCAP*

**Dr. and Mrs. Raouf E. Nakhleh**  
*Dr. and Mrs. Richard C. Friedberg*

**Ann Neumann**  
*Dr. and Mrs. Richard C. Friedberg*

**The Obeng Family**  
*Rebecca C. Obeng, MD, PhD, MPH*

**Kerry Orgeron**  
*Emily E. Volk, MD, MBA, FCAP*

**Christopher N. Otis, MD, FCAP**  
*Dr. and Mrs. Richard C. Friedberg*

## P

**Mary L. Paton, MT(ASCP)**  
*Emily E. Volk, MD, MBA, FCAP*

**Deborah A. Perry, MD, FCAP**  
*Emily E. Volk, MD, MBA, FCAP*

**Joanne Petterson**  
*Pamela S. Mix*

**Gary W. Procop, MD, MS, FCAP**  
*Emily E. Volk, MD, MBA, FCAP*

**Michael B. Prystowsky, MD, PhD, FCAP**  
*Emily E. Volk, MD, MBA, FCAP*

**Dr. Michael B. Prystowsky and Dr. Janet Hill Prystowsky**  
*Dr. and Mrs. Richard C. Friedberg*

## R

**Aneta Rafalowski, MD, FCAP**  
*Dr. and Mrs. Richard C. Friedberg*

**Gloria Ramos-Rivera, MD**  
*Emily E. Volk, MD, MBA, FCAP*

**Julia Rankenburg**  
*Jennifer Laudadio, MD, FCAP*  
*Emily E. Volk, MD, MBA, FCAP*

**Richard Raskin, JD**  
*Dr. and Mrs. Richard C. Friedberg*

**Paul A. Raslavicus, MD, FCAP**  
*Emily E. Volk, MD, MBA, FCAP*

**James E. Richard, DO, FCAP**  
*Emily E. Volk, MD, MBA, FCAP*

**Dr. and Mrs. James E. Richard**  
*Dr. and Mrs. Richard C. Friedberg*

**Elizabeth Marie Rinehart, MD**  
*Dr. and Mrs. Richard C. Friedberg*  
*Emily E. Volk, MD, MBA, FCAP*

**Sonia Carol Robazetti, MD, CCRC**  
*Jennifer Laudadio, MD, FCAP*

**Stanley J. Robboy, MD, FCAP**  
*Emily E. Volk, MD, MBA, FCAP*

## S – T

**Assad J. Saad, MD, FCAP**  
*Emily E. Volk, MD, MBA, FCAP*

**Megan Sampey**  
*Pamela S. Mix*

**John Scott**  
*Dr. and Mrs. Richard C. Friedberg*  
*Emily E. Volk, MD, MBA, FCAP*

**Nicholas Serafy Jr.**  
*Jennifer Laudadio, MD, FCAP*

**Fay Shamanski**  
*Emily E. Volk, MD, MBA, FCAP*

**Jane Shlaes**  
*Pamela S. Mix*  
*Sally Weintraub*

**Joyce Simko**  
*Emily E. Volk, MD, MBA, FCAP*

**John H. Sinard, MD, PhD, FCAP**  
*Emily E. Volk, MD, MBA, FCAP*

**Loveleen Singh**  
*Emily E. Volk, MD, MBA, FCAP*

**Karim E. Sirgi, MD, MBA, FCAP**  
*Jennifer Laudadio, MD, FCAP*

**Robert M. Smith**  
*American Pathology Foundation*

**Christine Stamatis**  
*Joseph Schramm*

**Melissa B Stegun**  
*Emily E. Volk, MD, MBA, FCAP*

**Lanu V. Stoddart, MD, FCAP**  
*Dr. and Mrs. Richard C. Friedberg*

**Rebecca Struck**  
*Dr. and Mrs. Richard C. Friedberg*

**Mark S. Synovec, MD, FCAP**  
*Emily E. Volk, MD, MBA, FCAP*

**Patricia Tennant**  
*Emily E. Volk, MD, MBA, FCAP*

**Mike Troubh**  
*Emily E. Volk, MD, MBA, FCAP*

**J. Allan Tucker, MD, FCAP**  
*Ronald W. McLawhon, MD, PhD, FCAP*

## U – Z

**Elizabeth Usher**  
*Dr. and Mrs. Richard C. Friedberg*

**Elizabeth A. Wagar, MD, FCAP**  
*Emily E. Volk, MD, MBA, FCAP*

**Dr. Elizabeth A. Wagar and Mr. Michael Gerson**  
*Dr. and Mrs. Richard C. Friedberg*

**Diane Warner**  
*Dr. and Mrs. Richard C. Friedberg*

**Mary K. Washington, MD, PhD, FCAP**  
*Emily E. Volk, MD, MBA, FCAP*

**Karen E. Weck, MD, FCAP**  
*Emily E. Volk, MD, MBA, FCAP*

**Gail H. Vance, MD, FCAP**  
*Jennifer Laudadio, MD, FCAP*

**Drs. Emily E. Volk and Daniel E. Mais**  
*Dr. and Mrs. Richard C. Friedberg*

**Sally Weintraub**  
*Dr. and Mrs. Richard C. Friedberg*  
*Pamela S. Mix*  
*Emily E. Volk, MD, MBA, FCAP*

**Sharon West**  
*Emily E. Volk, MD, MBA, FCAP*

**Thomas M. Wheeler, MD, FCAP**  
*Emily E. Volk, MD, MBA, FCAP*

**R. Bruce Williams, MD, FCAP**  
*Emily E. Volk, MD, MBA, FCAP*

**Drs. R. Bruce Williams and Susan Van Hook Williams**  
*Dr. and Mrs. Richard C. Friedberg*

**Nonda Wilson**  
*Emily E. Volk, MD, MBA, FCAP*

**Ayanna Woodling**  
*Emily E. Volk, MD, MBA, FCAP*

**Kay H. Woodruff, MD, FCAP**  
*College of American Pathologists*

**Mary M. Zakhary, MD, FCAP**  
*Dr. and Mrs. Richard C. Friedberg*

**Marci Zerante**  
*Jennifer Laudadio, MD, FCAP*  
*Emily E. Volk, MD, MBA, FCAP*

**Barry Ziman**  
*Emily E. Volk, MD, MBA, FCAP*

**Yara Zolotukhina**  
*Dr. and Mrs. Richard C. Friedberg*

## President's Circle Platinum Level \$2,500+

Anonymous  
Dr. and Mrs. David J. Blomberg  
Alfred W. Campbell, MD, FCAP  
Dr. Desiree A. Carlson and Mr. Stephen P. Sullivan  
Michael A. Deck, MD, FCAP  
Drs. Theresa S. and Roger Emory  
Dr. and Mrs. Edward P. Fody  
Dr. and Mrs. Richard C. Friedberg  
Dr. and Mrs. Alan F. Frigy  
Dr. Richard R. and Ms. Patsy C. Gomez  
The Hanson Family Charitable Fund  
*Gerald R. Hanson, MD, FCAP*  
Dr. and Mrs. William V. Harrer  
Dr. and Mrs. Gene N. Herbek  
Dr. and Mrs. Andrew E. Horvath  
Drs. Bharati S. and Suketu Jhaveri  
Dr. Rebecca L. Johnson and Mr. Michael A. Kelly  
The Esther & Hyman Rapport Philanthropic Trust  
*Roger D. Klein, MD, JD, FCAP*  
Dr. Jennifer Laudadio and Mr. Ethan Igleheart  
Dr. and Mrs. Alfred Lui  
Guillermo G. Martinez-Torres, MD, FCAP  
Maryrose T. Murphy  
Dr. and Mrs. Dennis G. O'Neill  
C. Dean Pappas, MD, FCAP  
Pathology Associates of Albuquerque  
*Peter Appenzeller, MD, FCAP*  
*Alexei Bakhirev, MD, FCAP*  
*Bonnie A. Carmichael, MD, FCAP*  
*James C. Elliott, MD, FCAP*  
*Hillary R. Elwood, MD, FCAP*  
*Richard M. Feddersen, MD, FCAP*  
*Robyn Gaffney, MD, FCAP*  
*Elizabeth I. Harris, MD, FCAP*  
*Andrew E. Horvath, MD, FCAP*  
*Amer Z. Mahmoud, MD, FCAP*  
*Thomas G. McConnell, MD, FCAP*  
*Jeremy C. Parsons, MD, FCAP*  
*Arand D. Pierce, MD, FCAP*  
*Cordelia E. Sever, MD, FCAP*  
*James H. Spigel, MD, FCAP*

Shelly A. Stepenaskie, MD, FCAP  
Benjamin Wagenman, MD, FCAP  
Whitney M. Winham, MD, FCAP  
Dahua Zhang, MD, FCAP

Dr. Michael B. and Dr. Janet H.  
Prystowsky

Dr. and Mrs. Alvin M. Ring  
Mary Ann Sens, MD, PhD, FCAP  
Nicholas T. Serafy Jr.

Dr. and Mrs. V.O. Speights Jr.  
Dr. Emily E. Volk and Dr. Daniel D. Mais  
Dr. Ronald L. Weiss and Ms. Peggy  
A. Ahlin

Drs. R. Bruce Williams and Susan  
Van Hook Williams  
William B. Zeiler, MD, FCAP

**President's Circle Gold Level**  
**\$2,000–\$2,499**

Roberto J. Bayardo, MD, FCAP  
Jessica M. Comstock, MD, FCAP  
Gail R. Janes, PhD  
Dr. and Mrs. James E. Richard  
Assad J. Saad, MD, FCAP

Gail H. Vance, MD, FCAP  
Dr. Elizabeth A. Wagar and Mr.  
Michael Gerson

**President's Circle Silver Level**  
**\$1,500–\$1,999**

Gregory A. Hosler, MD, PhD, FCAP  
Kathryn T. Knight, MD, FCAP  
Barbara Jean Magnani, PhD, MD, FCAP  
John C. Moad, MD, FCAP  
Kamala Murali, MD, FCAP  
John G. Newby, MD, FCAP  
Michelle K. Zimmerman, MD, MBA,  
FCAP

**President's Circle Level**  
**\$1,000–\$1,499**

Janis M. Atkinson, MD, FCAP  
Mariana E. Berho, MD, FCAP  
Thomas M. Betlej, MD, FCAP  
Sharon K. Bihlmeyer Gauthier, MD,  
FCAP  
David L. Booker, MD, FCAP  
Philip A. Branton, MD, FCAP  
Jeffrey D. Cao, MD, FCAP  
Matthew D. Carr, MD, FCAP

Thomas J. Cooper Jr., MD, FCAP  
Teresa M. Cox, MD, FCAP  
James M. Crawford, MD, PhD, FCAP  
Diane D. Davey, MD, FCAP  
Larry J. Davis, MD, FCAP  
Everett R. Engel Jr., MD, FCAP  
April A. Ewton, MD, FCAP  
George Fiedler  
Mary E. Fowkes, MD, PhD, FCAP  
Wayne L. Garrett, DO, FCAP  
Michael A. Gistrak, MD, FCAP  
Gregory L. Gleason  
Dr. and Mrs. Patrick E. Godbey  
Gerald A. Hoeltge, MD, FCAP  
Robert D. Hoffman, MD, PhD, FCAP  
Jennifer L. Hunt, MD, FCAP  
Michael T. Kafka, MD, FCAP  
Anthony A. Killeen, MD, PhD, FCAP  
Joseph P. Leverone, MD, FCAP  
Bradley M. Linzie, MD, FCAP  
Stephen R. Lyle, MD, PhD, FCAP  
Marikay and Jeffrey Martin

Paul J. McCarthy, MD, FCAP  
Jill A. McGuire  
Dina R. Mody, MD, FCAP  
Raouf E. Nakhleh, MD, FCAP  
Avtarinder K. Nijjar, MD, FCAP  
James L. Ownbey, MD, FCAP  
Thomas W. Palmrose, MD, FCAP  
Diane L. Persons, MD, FCAP  
Suzanne Zein-Eldin Powell, MD, FCAP  
Thomas G. Puckett, MD, FCAP  
Amy M. Rojiani, MD, PhD, FCAP  
Mary R. Schwartz, MD, FCAP  
Peter A. Scully, MD, FCAP  
Karim E. Sirgi, MD, MBA, FCAP  
Charles E. Slonaker III, MD, FCAP  
William L. Thelmo, MD, FCAP  
Louis D. Wright Jr., MD, FCAP  
Sang Wu, MD, FCAP  
Louis J. Zinterhofer, MD, FCAP

**Governor's Circle \$500–\$999**

Noel M. Adachi  
Edward R. Ashwood, MD, FCAP

Paul F. Atkinson, MD, FCAP  
Paul Bachner, MD, FCAP  
Jane A. Bennett-Munro, MD, FCAP  
Cathy O. Blight, MD, FCAP  
Arthur W. Bracey, MD, FCAP  
George E. Branam, MD, FCAP  
Henry G. Brown, MD, PhD, FCAP  
Deborah R. Citron, MD, FCAP  
Michael R. Coleman  
Edward F. DiCarlo, MD, FCAP  
John T. Fallon, MD, PhD, FCAP  
Robert Farnham III, MD, FCAP  
Lisa Fatheree  
Julietta Fiscella, MD, FCAP  
Daniel W. Garland, MD, FCAP  
Guy C. Glenn, MD, FCAP  
Andrew J. Goodwin IV, MD, FCAP  
Wayne W. Grody, MD, PhD, FCAP  
Thomas S. Haas, DO, FCAP  
Clarke T. Harding III, MD, FCAP  
Michelle M. Hebert, MD, FCAP  
Charles N. Iknayan, MD, FCAP  
Ming Jiang, MD, FCAP  
Donald A. Johnson, MD, FCAP  
Donald S. Karcher, MD, FCAP  
Bradley S. Karon, MD, PhD, FCAP  
Ellen C. Ko, MD, FCAP  
Predrag M. Latkovich, MD, FCAP  
Keagan H. Lee, MD, FCAP  
Christopher M. Leveque, MD, FCAP  
Gary K. Ludwig, MD, FCAP  
James Marinis  
John C. Martin, MD, FCAP  
Larry W. Massie, MD, FCAP  
Roger C. Mathewson, MD, FCAP  
Gerald Minkowitz, MD, FCAP  
Michael J. Misialek, MD, FCAP  
Pamela S. Mix  
Saeid Movahedi-Lankarani, MD, FCAP  
Stephen R. Myers  
David P. Nicholson, MD, FCAP  
Felix A. Olobatuyi, MD, FCAP  
Dennis P. O'Malley, MD, FCAP  
Steven F. O'Sheal, MD, FCAP  
Karen A. Oyama, MD, FCAP  
William C. Pitts, MD, FCAP  
Balaram Puligandla, MD, FCAP  
Ibrahim Ramzy, MD, FCAP



Richard D. Raskin, JD  
 Nicole D. Riddle, MD, FCAP  
 Charles F. Romberger, MD, FCAP  
 Stephen G. Ruby, MD, MBA, FCAP  
 Rachel L. Rucker-Schmidt, MD, FCAP  
 Kristina Schwartz  
 John H. Sinard, MD, PhD, FCAP  
 Prudence V. Smith, MD, FCAP  
 Ronald P. Spark, MD, FCAP  
 Stephanie A. Spingarn, MD, FCAP  
 John C. Spinosa, MD, PhD, FCAP  
 Mary L. Swearingen, MD, FCAP  
 Ann D. Thor, MD, FCAP  
 Devendra V. Trivedi, MD, FCAP  
 Paul N. Valenstein, MD, FCAP  
 Michael J. Waldron, MD, FCAP  
 Nancy E. Warner, MD, FCAP  
 William W. West, MD, FCAP  
 Robert M. White, MD, FCAP  
 Jan E. Woods, MD, FCAP

**Friends of the Foundation**  
**\$100–\$499**

George R. Abbott, MD, FCAP  
 Jared J. Abbott, MD, PhD, FCAP  
 Thomas Adamec, MD, FCAP  
 Serge Alexanian, MD, FCAP  
 Charles K. Allam, MD, FCAP  
 Timothy C. Allen, MD, JD, FCAP  
 Amy E. Alspach, MD, FCAP  
 Christine Andersen  
 Cris J. Anderson, MD, FCAP  
 Mohammad Q. Ansari, MD, FCAP  
 Panayiota A. Athanasiadou, MD, FCAP  
 Carey Z. August, MD, FCAP

**B**

Robert C. Babkowski, MD, FCAP  
 Axel A. Baez-Torres, MD, FCAP  
 Richard J. Baltaro, MD, PhD, FCAP  
 Nasima Banerjee, MD, FCAP  
 Byron L. Barksdale, MD, FCAP  
 Edward Beach  
 Richard D. Becker  
 Hallgrimur Benediktsson, MD, FCAP  
 Michael A. Berman, MD, FCAP  
 Pamela J. Bernard  
 George G. Birdsong, MD, FCAP  
 Robert D. Bjork, MD, FCAP

Melissa M. Blann, MD  
 Daniel M. Bloch, MD, FCAP  
 Shahid Bokhari, MD, FCAP  
 Stephen M. Bologna, MD, FCAP  
 Michael J. Borowitz, MD, PhD  
 Aaron D. Bossler, MD, PhD, FCAP  
 Cindy Bowman, MT  
 Theresa M. Boyd, MD, FCAP  
 Gerard Breton, MD, FCAP  
 Mark D. Brissette, MD, FCAP  
 M. Desmond Burke, MD, FCAP  
 Edward J. Burkhard, Jr., MD, FCAP

**C**

Leonard A. Caccavella  
 Jeanette M. Camacho, MD, FCAP  
 Rafael Z. Campanini, MD, FCAP  
 Susan S. Cannon, MD, FCAP  
 Diana M. Cardona, MD, FCAP  
 Michael J. Carey, MD, FCAP  
 Robert F. Carr Jr., MD, FCAP  
 Alexis B. Carter, MD, FCAP  
 Ann B. Catts, MD, FCAP  
 Filiberto Cavazos, MD, FCAP  
 Anthony Chang, MD, FCAP  
 Chung-Che Chang, MD, PhD, FCAP  
 Howard P. Charman, MD, FCAP  
 Zong-Ming E. Chen, MD, PhD, FCAP  
 Homer H. Cheng, MD, FCAP  
 Hong Y. Choi, MD, FCAP  
 Yap-Yee C. Chong, MD, MBA, FCAP  
 Stephen J. Cina, MD, FCAP  
 Jimmy R. Clark, MD, FCAP  
 Martha R. Clarke, MD, FCAP  
 David Cohen, MD  
 Carol Colasacco



Terence J. Colgan, MD, FCAP  
 Bradford S. Collins, MD, FCAP  
 James L. Connolly, MD, FCAP  
 Robert E. Cranley Jr., MD, FCAP  
 Gretchen S. Crary, MD, FCAP  
 Jeffrey L. Craver, MD, FCAP  
 Richard V. Crisera, MD, FCAP  
 Giovanna M. Crisi, MD, PhD, FCAP  
 Barbara A. Crothers, DO, FCAP  
 Oscar W. Cummings, MD, FCAP  
 Jeffrey L. Curtis, MD, FCAP

**D**

Marjorie David, MD, MS, FCAP  
 Christina Dean, MD  
 Dana S. Devine, DO, FCAP  
 Alessandro DeVito, MD, FCAP  
 Suzanne M. Dintzis, MD, PhD, FCAP  
 Russell E. Dodds, MD, FCAP  
 Jessica L. Dodge, MD, FCAP  
 Mary L. Doherty  
 C. Terrence Dolan, MD, FCAP  
 Anastasia Drobysheva, MD  
 Patrawadee Duangjak, MD, FCAP  
 Michael C. Dugan, MD, FCAP  
 Nicola Dundas, MD, MS,  
 Janet R. Durham, MD, FCAP  
 Natalie K. Durkacz

**E**

James W. Eagan Jr., MD, FCAP  
 Robin Eastman-Abaya, MD, FCAP  
 John H. Eckfeldt, MD, PhD, FCAP  
 Richard N. Eisen, MD, FCAP  
 Rosana Eisenberg, MD, FCAP  
 James W. Elliott, MD, FCAP  
 Richard R. Ellis, MD, FCAP  
 William J. Elton, MD, FCAP  
 George W. English III, MD, FCAP  
 Howard D. Epstein, MD, FCAP  
 Yener S. Erozan, MD, FCAP  
 Edward Ewing, DO, FCAP  
 Amobi M. Ezenekwe, MD, FCAP

**F**

Claire B. Fabian, MD, FCAP  
 Fang Fan, MD, PhD, FCAP  
 Marc R. Filstein, MD, MS, FCAP  
 Patrick L. Fitzgibbons, MD, FCAP  
 Cynthia L. Foss-Bowman, MD, FCAP

Irwin S. Fox, MD, FCAP  
 Marla J. Franks, MD, FCAP  
 William G. Frederick, MD, PhD, FCAP  
 S. Robert Freedman, MD, FCAP  
 Matthew R. Fries, MD, FCAP  
 Robert M. Futoran, MD, FCAP

**G**

David L. Gang, MD, FCAP  
 Jerad M. Gardner, MD, FCAP  
 Laura J. Gardner, MD, FCAP  
 Rachel L. Geller, MD  
 Vincent Gemellaro, MD, FCAP  
 Shah M. Giashuddin, MD, FCAP  
 Harry M. Givelber, MD, FCAP  
 Jan S. Glas  
 Dr. and Mrs. Eric F. Glassy  
 Jacinto J. Gochoco, Jr., MD, FCAP  
 Steven P. Goetz, MD, FCAP  
 Lorien A. Goodale, MD, FCAP  
 Chelsea Gracia, MD  
 Kenneth F. Grant, MD, FCAP  
 C. Joyce Greathouse, MD, FCAP  
 Emily A. Green, MD, FCAP  
 Mathew S. Greenberg, MD, MS, FCAP  
 Patricia A. Gregg, MD, FCAP  
 Andrew J. Gregowicz, MD, FCAP  
 Kevin T. Grieder, DO, FCAP  
 David D. Grier, MD  
 David Gross  
 Narina Grove, MD, MA  
 Anthony J. Guidi, MD, FCAP  
 Avneesh Gupta, MD, FCAP

**H**

J. Cameron Hall, MD, FCAP  
 William F. Hancock, MD, FCAP  
 Clarke T. Harding, Jr., MD, FCAP  
 Kathleen M. Harms, MD, FCAP  
 Harold H. Harrison, MD, PhD, FCAP  
 Alfred E. Hartmann, MD, FCAP  
 Rui He, MD, FCAP  
 Nan V. Heard, MD, FCAP  
 Michelle Heayn, MD, PhD  
 Peter A. Herreid, MD, FCAP  
 Paul F. Hine, MD, PhD, FCAP  
 Charles T. Hinshaw, Jr., MD, FCAP  
 Andrea P. Ho, MD  
 Shannon W. Hoekstra

Jane D. Hon, MD  
 In S. Hong, MD, FCAP  
 Daniel L. House, MD, FCAP  
 Jonathan H. Hughes, MD, PhD, FCAP  
 Mujtaba Husain, MD, FCAP

**I–J**

Muhammed T. Idrees, MD, FCAP  
 Seema Jabbar, MD  
 Grace N. Jackson, MD, FCAP  
 Dean W. Joelson, MD, FCAP  
 Jonathan H. Johnson, MD, FCAP  
 Lisa B. Johnson  
 Walter D. Jones, MD, FCAP  
 Kathy Juliussen  
 Kenneth H. Jurgens, MD, FCAP  
 Elzbieta W. Jurka, MD, FCAP

**K**

Mustafa Kaakour, MD, FCAP  
 Brinda R. Kamat, MD, FCAP  
 Edward A. Kaufman, MD, MBA,  
 FCAP  
 Michael W. Kaufman, MD, FCAP  
 Karen L. Kaul, MD, PhD, FCAP  
 James F. Keefe, MD, FCAP  
 William J. Keenan, MD, FCAP  
 Lawrence C. Kenyon, MD, PhD, FCAP  
 William F. Kern III, MD, FCAP  
 Matthew M. Kershnik, MD, FCAP  
 Megan Ketcham, MD,  
 Richard D. Key, MD, FCAP  
 Frederick L. Kiechle, MD, PhD, FCAP  
 Paul B. Kilzer, MD, FCAP  
 Hyunchul Kim, MD, FCAP  
 Lauren C. King, MD, FCAP  
 Kenneth M. Klein, MD, FCAP  
 Marlys Kleppe  
 Dr. and Mrs. Richard H. Knierim  
 Lawrence L. Knight, MD, FCAP  
 Nancy C. Kois, MD, FCAP  
 Jessica A. Kozel, MD, FCAP  
 Mary Katherine Krause  
 Susan Krauser  
 Jonathan S. Krauss, MD, FCAP  
 Lesley A. Kresie, MD, D(ABHI), FCAP  
 Meghann Kruse  
 George F. Kwass, MD, FCAP



**L**

Mike G. Lacey, MD, FCAP  
 John E. Lawe, MD, FCAP  
 Gordon B. LeGrand, MD, FCAP  
 Jonathan Lehrer  
 Richard M. Levenson, MD, FCAP  
 Alan Levin, MD, FCAP  
 Daniel Levitan, MD, BSc  
 Rodger P. Lewis, MD, FCAP  
 Ramiro R. Lindado, MD, FCAP  
 Samara A. Lingafelter  
 David Loeffler, DO  
 Jerome M. Loew, MD, FCAP  
 Nancy A. Lowe  
 Lincoln Luk Jr., MD, FCAP  
 Kerry Lydon

**M**

Lachlan Macleay Jr., MD, FCAP  
 Marlene L. Magrini-Greyson, MD, FCAP  
 Etienne R. Mahe, MD, MSc, FCAP  
 Neal R. Makens, MD, FCAP  
 Joyce E. Maldonado, MD, FCAP  
 Wilford E. Maldonado, MD, FCAP  
 Muhammad A. Malik, MD, FCAP  
 Adrienne M. Malta  
 Venk Mani, MD, FCAP  
 Carol S. Marshall, MD, FCAP  
 Elizabeth T. Martin, MD, FCAP  
 Antonio E. Martinez, MD, FCAP  
 Padma R. Mathur, MD, FCAP  
 Terrance A. McBurney, MD, FCAP  
 Shrara McCue  
 Tari McDermand  
 Michael D. McEachin, MD, MBA, FCAP  
 Curtis A. McGuyer, MD, FCAP  
 Karen M. McIntosh, MD, FCAP  
 Donald C. McKee, MD, FCAP  
 Ronald W. McLawhon, MD, PhD, FCAP  
 William W. McLendon, MD, FCAP  
 Roger E. McLendon, MD, FCAP  
 Jeffrey R. Melnick, MD, PhD, FCAP  
 Juan C. Millan, MD, FCAP  
 Douglas C. Miller, MD, PhD, FCAP  
 Dylan V. Miller, MD, FCAP  
 Richard D. Minehart

Milka M. Montiel, MD, FCAP  
 Loretta Morrison  
 Geoffrey H. Moyer, MD, PhD, FCAP  
 Karla K. Murphy, MD, FCAP  
 Jonathan L. Myles, MD, FCAP

**N**

Robert M. Najarian, MD, FCAP  
 Megan O. Nakashima, MD, FCAP  
 Sherif A. Nasr, MD, FCAP  
 Soheir (Sue) R. Nawas, MD, FCAP  
 Ranjana S. Nawgiri, MD, FCAP  
 Ann Neumann  
 William P. Newman III, MD, FCAP  
 Weng C. Ng, MBBS, FCAP  
 Kent A. Nickell, MD, FCAP  
 Shuang Niu, MD, PhD  
 Robert W. Novak, MD, FCAP  
 David A. Novis, MD, FCAP  
 Jan A. Nowak, MD, PhD, FCAP

**O**

Rebecca C. Obeng, MD, PhD, MPH  
 Margret D. Oethinger, MD, PhD, FCAP  
 James Ogburn, MD, FCAP  
 Sarah J. Olenick, MD, PhD, FCAP  
 James Orheim  
 James E. Orr, MD, PhD, FCAP  
 Rebecca A. Osgood, MD, FCAP

**P**

Silvia F. Padron, MD, FCAP  
 Nola J. Palomino, MD, FCAP  
 Milagros C. Paneda, MD, FCAP  
 Moon S. Park, MD, FCAP  
 Carolyn Pease, MD, FCAP  
 Wayne E. Penka, MD, FCAP  
 Nat L. Pernick, MD, FCAP  
 Donald R. Peven, MD, FCAP  
 Volney E. Pierce Jr., MD, FCAP  
 Vivian W. Pinn, MD, FCAP  
 Latha R. Pisharodi, MD, FCAP  
 Susan I. Plath  
 Marvin S. Platt, MD, JD, ABFM, FCAP  
 Peter V. Podlusky, MD, FCAP  
 Richard J. Pollard, MD, FCAP  
 Anna W. Poniecka, MD, FCAP  
 Miriam D. Post, MD, FCAP  
 Michelle L. E. Powers, MD, MBA, FCAP

Anil R. Prasad, MD, FCAP  
 Bobbi S. Pritt, MD, FCAP  
 Amanda P. Profit, MD, FCAP

**R**

Melissa Rabinowitz  
 Delbert E. Rainosek, MD  
 Joseph P. Rank, MD, FCAP  
 David M. Reardon, MD, FCAP  
 Nagarpu S. Reddy, MD, FCAP  
 Vijaya B. Reddy, MD, MBA, FCAP  
 Teresita C. Redondo, MD, FCAP  
 Dennis D. Reinke, MD, FCAP  
 Sarah Renz  
 Leeann M. Rock, MD, FCAP  
 Arno A. Roscher, MD, FCAP  
 Joan Rose  
 Mr. and Mrs. Charles J. Roussel  
 Concepcion Roxas, MD, FCAP

**S**

Ahmed M. Saad, MD, PhD, FCAP  
 Nirmal Saini, MD, FCAP  
 Reisuke Saito, MD, FCAP  
 Rana Samuel, MD, FCAP  
 Sateesh K. Satchidanand, MD, FCAP  
 Ravindranauth N. Sawh, MD, FCAP  
 James B. Sawyer, MD, FCAP  
 Joseph Schramm  
 James J. Scillian, MD, PhD, FCAP  
 Alfred G. Scottolini, MD, FCAP  
 Mala Sengupta, MD, FCAP  
 Deborah A. Sesok-Pizzini, MD, MBA, FCAP  
 Rama Shankar, MD, FCAP  
 Arell S. Shapiro, MD, FCAP

Kailash B. Sharma, MD, FCAP  
 Suash Sharma, MD, FCAP  
 E. Mei Shen, MD, FCAP  
 Lee C. Sheppard Jr., MD, FCAP  
 Nathan Sherman, MD, FCAP  
 Marie L. Shikany  
 Jane Shlaes  
 Marc O. Shokeir, MD, FCAP  
 Gene P. Siegal, MD, PhD, FCAP  
 Howard L. Siegel, MD, FCAP  
 Shirley Siew, MD, FCAP  
 Christine N. Sillings, MD, FCAP  
 Paul J. Simon, DO, FCAP  
 Ross W. Simpson, MD, FCAP  
 David L. Slater, MD, FCAP  
 James W. Smith, MD, FCAP  
 Maxwell L. Smith, MD, FCAP  
 Samuel A. Smith, MD, FCAP  
 Maria G. Sparacino, MD, FCAP  
 Isabell E. Speer, MD, FCAP  
 Susan E. Spires, MD, FCAP  
 Luther D. Stacy, MD, FCAP  
 Eric Statz, MD  
 William H. Strange, MD, FCAP  
 John M. Sundermann, MD, FCAP  
 Mark S. Synovec, MD, FCAP  
 Jenő E. Szakacs, MD, FCAP

**T**

Sana O. Tabbara, MD, FCAP  
 Larry R. Tackett, MD, FCAP  
 William H. Talbot Jr., MD, FCAP  
 Rosemary H. Tambouret, MD, FCAP  
 Ali Tamsen, MD, FCAP  
 Jeffrey J. Tarrand, MD, FCAP  
 Sheldon B. Taubman, MD, FCAP  
 James A. Terzian, MD, FCAP  
 Lindsey C. Thomas, MD, FCAP  
 Craig Thompson  
 Mikhail Tismenetsky, MD, FCAP  
 Russell H. Tomar, MD, FCAP  
 Steven L. Tracy, MD, FCAP  
 Denise M. Tritz, MD, FCAP  
 Darshan Trivedi, MD, PhD

**U - V**

Edward O. Uthman, MD, FCAP  
 Angelina L. Valcos-Sarau, MD, FCAP  
 Caroline L. Valdes, MD, FCAP  
 Arturo L. Vargas, MD, FCAP  
 Mehdi Vaseghi, MD, FCAP



James R. Vasser, MD, FCAP  
Francisco R. Velazquez, MD,  
SM(AAM), FCAP  
Theresa M. Voytek, MD, FCAP

### W – Z

Jonathan R. Walburn, MD, FCAP  
Jami L. Walloch, MD, FCAP  
Paula J. Washington, MD, FCAP  
Lori M. Wasson, DO, FCAP  
Sally Weintraub  
Tracey D. Wentz, MD, FCAP  
Alice L. Werner, MD, FCAP  
Robert A. Wessels, MD, FCAP  
Jamie A. Weydert, MD, FCAP  
Dr. and Mrs. Thomas M. Wheeler  
Megan Wick  
David A. Wiese, MD, PhD, FCAP  
David S. Wilkinson, MD, PhD, FCAP  
Ronald R. Willey, MD, FCAP  
David A. Willis  
Nonda J. Wilson  
Edward G. Wilt, MD, FCAP  
Robert M. Winn, MD, FCAP  
Roseann I. Wu, MD, MPH, FCAP  
David V. Yana, MD, FCAP  
Mariano G. Yogore III, MD, JD, FCAP  
Sara Zadeh, MD  
Neda Zarrin-Khameh, MD, MPH,  
FCAP  
Marci L. Zerante  
Lanjing Zhang, MD, FCAP  
Shourong Zhao, MD, FCAP  
Wenxin Zheng, MD, FCAP  
Yara Zolotukhina

### Individuals who donated time in support of CAP Foundation Grants Review and See, Test & Treat Programs

Stanley Cohen, MD, FCAP  
Jon D. Conklin, MD, FCAP  
Ronald E. Domen, MD, FCAP  
Wayne L. Garrett, DO, FCAP  
Henry A. Homburger, MD, FCAP  
Marc E. Keen, MD, FCAP  
Areta Kowal-Vern, MD, FCAP  
Stanley Lipper, MD, ACP, FCAP  
Timothy O'Leary, MD, PhD, FCAP

Chandrashekar Padmalatha, MD,  
FCAP  
Ibrahim Ramzy, MD, FCAP  
Alvin M. Ring, MD, FCAP  
Fred H. Rodriguez Jr., MD, FCAP  
Gene P. Siegal, MD, PhD, FCAP  
Gurmukh Singh, MD, PhD, FCAP  
Gregory A. Threatte, MD, FCAP  
Ronald L. Weiss, MD, MBA, FCAP  
Karen Balinski  
Rich Becker  
Donna M. Gillespie  
Meghann Kruse  
Bob Lutz  
Maya Ogden  
Joseph Schramm  
Kelly Westfall  
Eleanor M. Wojewoda

### Corporate and Foundation Donors \$25,000+

Becton Dickinson  
The Coleman Foundation  
Community Memorial Foundation  
CVS Health  
Hologic  
Media Directions Creative Group  
*Marvin Kogan*  
Ventana Medical Systems Inc.

### Corporate Donors \$5,000–\$24,999

Genentech Inc.  
Streck Laboratories Inc.

### Corporate Donors \$2,500–\$4,999

Blue Cross Blue Shield of Illinois

### Corporate Donors \$2,500–\$4,999

Blue Cross Blue Shield of Illinois

### Corporate Donors \$1,000–\$2,499

CE City, a Premier Inc., Company  
Enterprise Holdings Foundation  
Gaylord Group - A Marriott Company

### Corporate Donors \$100–\$999

Agendia Inc.  
The American Legion—People's Gas  
Post 336  
CAPTEL  
Garvey's Office Products  
Illumina Inc.  
James Marinis  
Sidley Austin LLP  
Texas Foam Inc.  
Tympani Incorporated  
*Don Vargo*

### Corporate In-Kind Donations

American Cancer Society  
Becton Dickinson  
Brown & Associates Medical  
Laboratories, LLC  
CHI Health Creighton University  
Medical Center  
CooperSurgical, Inc.  
FAITH, Montgomery County  
Hennepin County Medical Center  
Hologic  
Houston Department of Health and  
Human Services  
Houston Methodist Hospital  
Huron Valley Radiology (HVR)  
IHA Pathology and Laboratory  
Medicine  
LabCorp  
Methodist Hospital (Omaha)

Minnesota Department of Health  
National Cervical Cancer  
Coalition  
Nebraska Medicine  
NIKON  
Susan's Rally  
Univision

### See, Test & Treat Host Sites

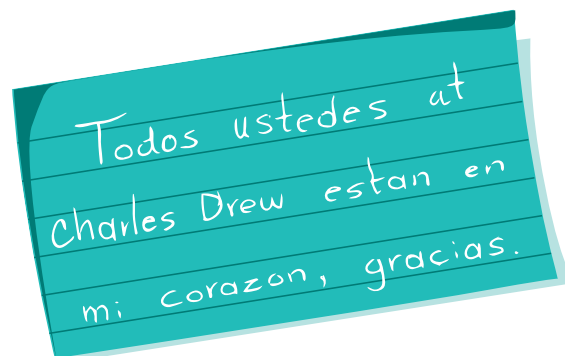
St. Joseph Mercy Medical Center  
*Ann Arbor, MI*  
Montefiore Medical Center  
*Bronx, NY*  
Charles Drew Family Health  
Center  
*Omaha, NE*  
Loyola University Medical Center  
*Maywood, IL*  
Lone Star Family Health Center  
*Conroe, TX*  
Signature Healthcare  
*Brockton, MA*  
NorthPoint Health & Wellness  
Center  
*Minneapolis, MN*  
Sunnyside Health Center  
*Houston, TX*  
UT Physicians Bayshore  
Multispecialty Clinic  
*Houston, TX*

### Is Your Name Missing?

If you think your name should be included in the CAP Foundation Donor Honor Roll, and it is not, there is probably a logical explanation: We made a mistake. Although we take great care in compiling our list of donors, there is always the possibility of error. If we omitted your name or if your name is incorrect, please accept our apology and notify us of the mistake. This honor roll of donors lists gifts received between January 1, 2016, and January 5, 2017. If you made a gift before or after those dates, your name will not be listed here. If you believe you made a gift, but you are not sure—we know it can be difficult to keep track of contributions—check your financial records or call our staff, and we will check ours. If you forgot to send in a contribution last year, consider making a gift now to ensure your name is included in the 2017 CAP Foundation Donor Honor Roll.

### Questions?

Please call the CAP Foundation at:  
800-323-4040 ext. 7718



**"All of you at Charles Drew  
are in my heart, thank you."**

*(written on the thank you card)*

August 17, 2016

“Dear Blanca,

With much affection and appreciation I greet you. I feel very grateful, that through you, I can express the profound appreciation that I feel towards all of the people that volunteered at Charles Drew because I was seen when I needed it the most and that the work that you do with the refugees, homeless, special needs and low income patients.

I want you to know the difference it has made in me and also the community when you provide such important events like this one for women. Where we were blessed with educational information and were shown through your care and attention that our lives matter. I realize that to have an event like this, it requires hard work to organize and lots of willingness and love for all individuals.

**Thank you for all of your help and kindness.”**

*See Test & Treat  
Non-English speaking patient*

Agosto 17  
2016

Querida Blanca:

La saludo con mucho cariño y agradecimiento y me siento muy contenta que por medio de usted yo pueda expresar el profundo agradecimiento que yo tengo por toda la gente que labora en la Clinica Charles Drew. por que a mi me atendieron cuando yo mas lo necesitaba y la labor que hacen con los refugiados y la gente sin casa y mucha gente con necesidades especiales y de bajos recursos. Quiero hacerles saber la diferencia en mi persona y en la comunidad, que ustedes hacen con eventos tan importantes como el de la mujer donde nosotros tuvimos el privilegio de ser educadas y nos demostraron que nuestra vida importa, con su cuidado y atencion. Y reconozco que para realizar algo asi se requiere trabajo para organizar y mucha disposicion y amor al proximo.

gracias por toda su ayuda y comprension  
Maria Miramontes

# 2016

## ANNUAL REPORT

