

**YOUR  
SUPPORT  
IS OUR  
STRENGTH**





# Our Mission

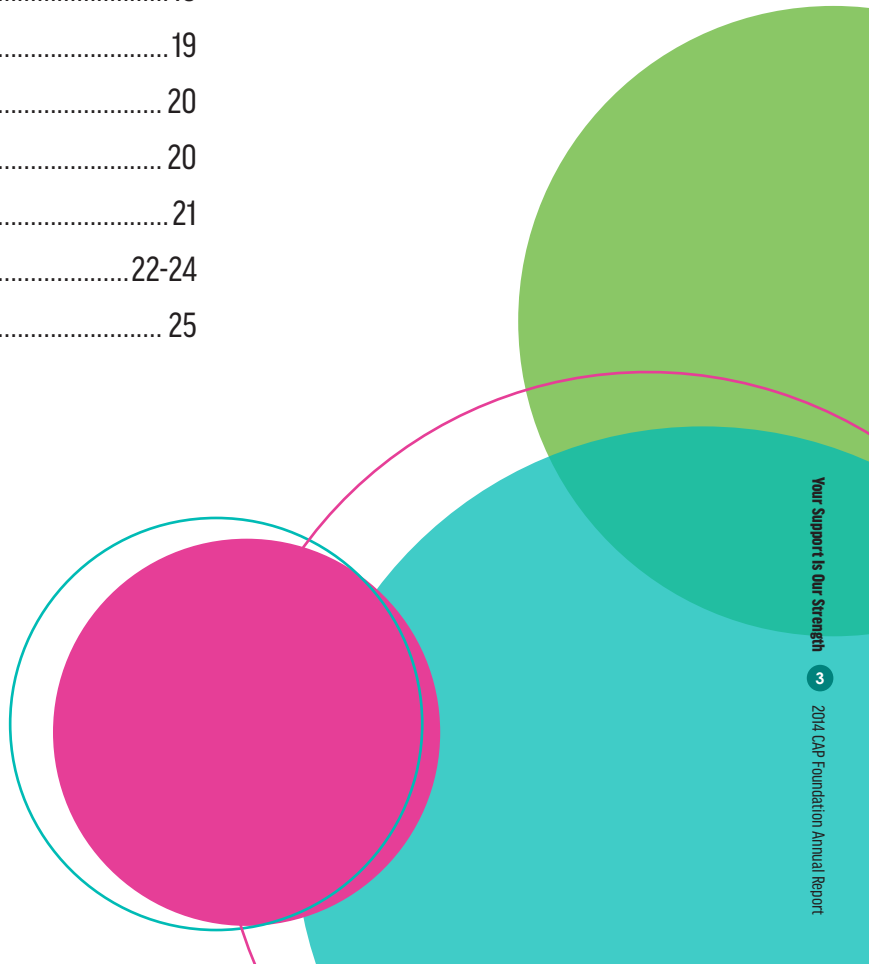
The CAP Foundation champions **patient-centered** and **humanitarian roles** for pathologists. The CAP Foundation strives to **connect people**, especially those in need, to the specialized, life-saving skills of pathologists.

Since 1963, we have also supported leadership, quality, and research grants and awards to enhance and develop leadership, medical specialty, and research skills to build the capacity of pathologists in the delivery of next-generation patient care.

Through the generous financial support of CAP members, staff, industry, foundations and patient advocacy groups, the CAP Foundation serves as the leading philanthropic organization for pathologists.



Our Mission.....	2
CAP Foundation Officers, Board of Directors, and Staff .....	4
Our Year .....	5
CAP Foundation Financials.....	6
Our Impact.....	7
Public Health Data .....	8
Where we have been this year .....	9
2014 Grants and Awards .....	10-13
The Gene and Jean Herbek Humanitarian Award .....	14-15
See, Test & Treat: Snapshots of 2014	
St. Louis, Missouri .....	16
Providence, Rhode Island.....	17
Austin, Texas .....	18
Minneapolis, Minnesota .....	19
Houston, Texas.....	20
Conroe, Texas .....	20
Boston, Massachusetts .....	21
The Impact of See, Test, & Treat in Just One Day .....	22-24
2014 Donor Honor Roll .....	25



## College of American Pathologists Foundation

# Our Leaders

### Officers

Lewis A. Hassell, MD, FCAP, President  
Jennifer Laudadio, MD, FCAP, Vice President  
Marvin Kogan, Secretary-Treasurer

### Board of Directors

Alison Blessing, Esq.  
Matthew Q. Christensen  
Steven J. Drury, MD  
Richard R. Gomez, MD, FCAP, CAP Board of Governors Liaison  
William V. Harrer, MD, FCAP  
William F. Hickey, MD, FCAP, CAP Board of Governors Liaison  
Christine Jabcuga, MD, Junior Member  
Robert B. Lorsbach, MD, PhD, FCAP  
Charles Roussel, CAP Chief Executive Officer  
Megan Strok  
Matthew A. Zarka, MD, FCAP

### Staff

Marion Malone  
Executive Director

Marikay Martin  
Director of Fundraising & Operations

Julia Rankenburg  
Program Development Manager

Kristin Garcia  
Operations Manager



## Your Support Defined Our Strength in 2014

# Our Year

### Dear Friends of the CAP Foundation,

In 2014, the CAP Foundation focused on delivering results and building a lasting impact. With your support, we planned boldly while investing prudently. Together, we brought preventive medicine and the expert training of pathologists and clinical teams to communities in need—to the public and patients where your donations are making a measurable difference.

With the launch of our new health care informatics awards for residents, we continued augmenting pathology education to grow the next generation of pathologists.

In the pages that follow, we share stories of that service to communities in need through grants you made possible. We deliver details and data that demonstrate how our donors make all the difference in the lives of many.

But first, as a personal preface, we share with you several significant strides we made in 2014 toward building a lasting impact, particularly for our signature program, See, Test & Treat®.

Most notably, we completed strong foundational research funded through our Robert Wood Johnson Foundation (RWJF) grant. Here, aiming toward ongoing expansion to reach more communities in need, we distilled and presented to RWJF recommendations to gain ground in four broad areas:

- Increasing See, Test & Treat program impact
- Planning program growth
- Promoting pathologists' roles in public health
- Preparing for further evaluation research on the See, Test & Treat model of care

And perhaps the most major milestone reached last year: We launched a new resource through the hard-working pathologists and our Communities of Practice. With this, we established and now facilitate the ongoing Communities of Practice forum to support innovation within See, Test & Treat to maintain consistent care and to continually raise standards of care.

These strides signal progress and promise. The sum of our work with RWJF is targeted for publication in a peer-reviewed journal. Additionally, RWJF is on board to leverage its own communication channels to help disseminate this seminal research upon publication. Our associations with RWJF and other similar organizations both large and small signal our growing strength, a power made possible only through you, our dedicated donors and supporters.

On behalf of the entire CAP Foundation board and staff, thank you for fueling our mission in 2014. With gratitude, we look forward to another year of progress on behalf of pathologists, patients, and those who need our skills and resources.

### Sincerely,

Lewis A. Hassell, MD, FCAP, President

Jennifer Laudadio, MD, FCAP, Vice President



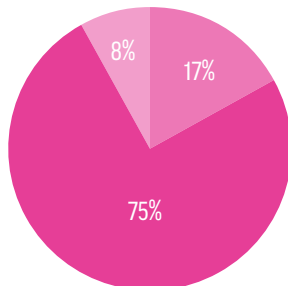
# CAP Foundation Financials

December 31	2014	2013
<b>Assets</b>		
Cash and Cash Equivalents	\$ 455,898	\$ 345,886
Pledges Receivable	110,393	134,703
Prepaid and Deposits	4,257	2,430
Due From College of American Pathologists	48,394	57,836
<b>Total Current Assets</b>	<b>\$ 618,942</b>	<b>\$ 540,855</b>
Investments	1,754,622	1,674,739
Pledges Receivable	147,192	255,422
Beneficial Interest in Remainder Trust	1,028,374	988,253
Property and Equipment	-	5,577
<b>Total Assets</b>	<b>\$ 3,549,130</b>	<b>\$ 3,464,846</b>
<b>Liabilities and Net Assets</b>		
<b>Current Liabilities</b>		
Accrued Grants and Awards	42,030	59,262
Accounts Payable	83,849	17,320
Deferred Revenue	42,621	-
Accrued Other	216,947	235,935
<b>Total Current Liabilities</b>	<b>\$ 385,447</b>	<b>\$ 312,517</b>
Note Payable to College of American Pathologists	175,000	175,000
<b>Total Liabilities</b>	<b>\$ 560,447</b>	<b>\$ 487,517</b>
<b>Net Assets</b>		
Unrestricted	1,015,396	702,632
Temporarily Restricted	1,604,911	1,944,651
Permanently Restricted	368,377	330,045
<b>Total Net Assets</b>	<b>\$ 2,988,684</b>	<b>\$ 2,977,328</b>

A complete copy of the financial statements audited by Ernst & Young LLP is available upon written request to the CAP Foundation, 325 Waukegan Road, Northfield, IL 60093.

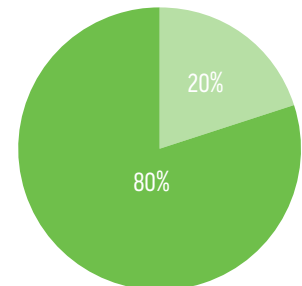
## Programs and GENERAL EXPENSES

Programs.....	75%
Fundraising .....	8%
General & Admin.....	17%



## Total REVENUE

Unrestricted Gifts.....	80%
Restricted Gifts.....	20%
Other Revenue .....	0%



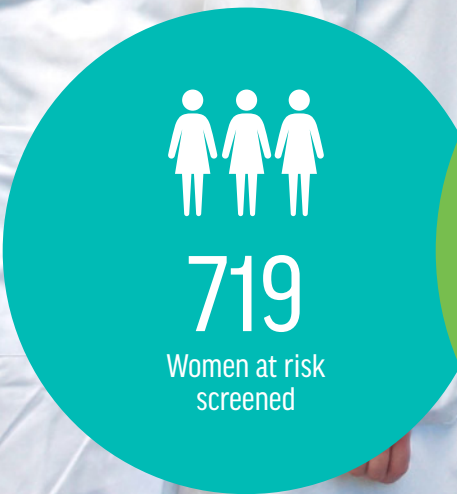
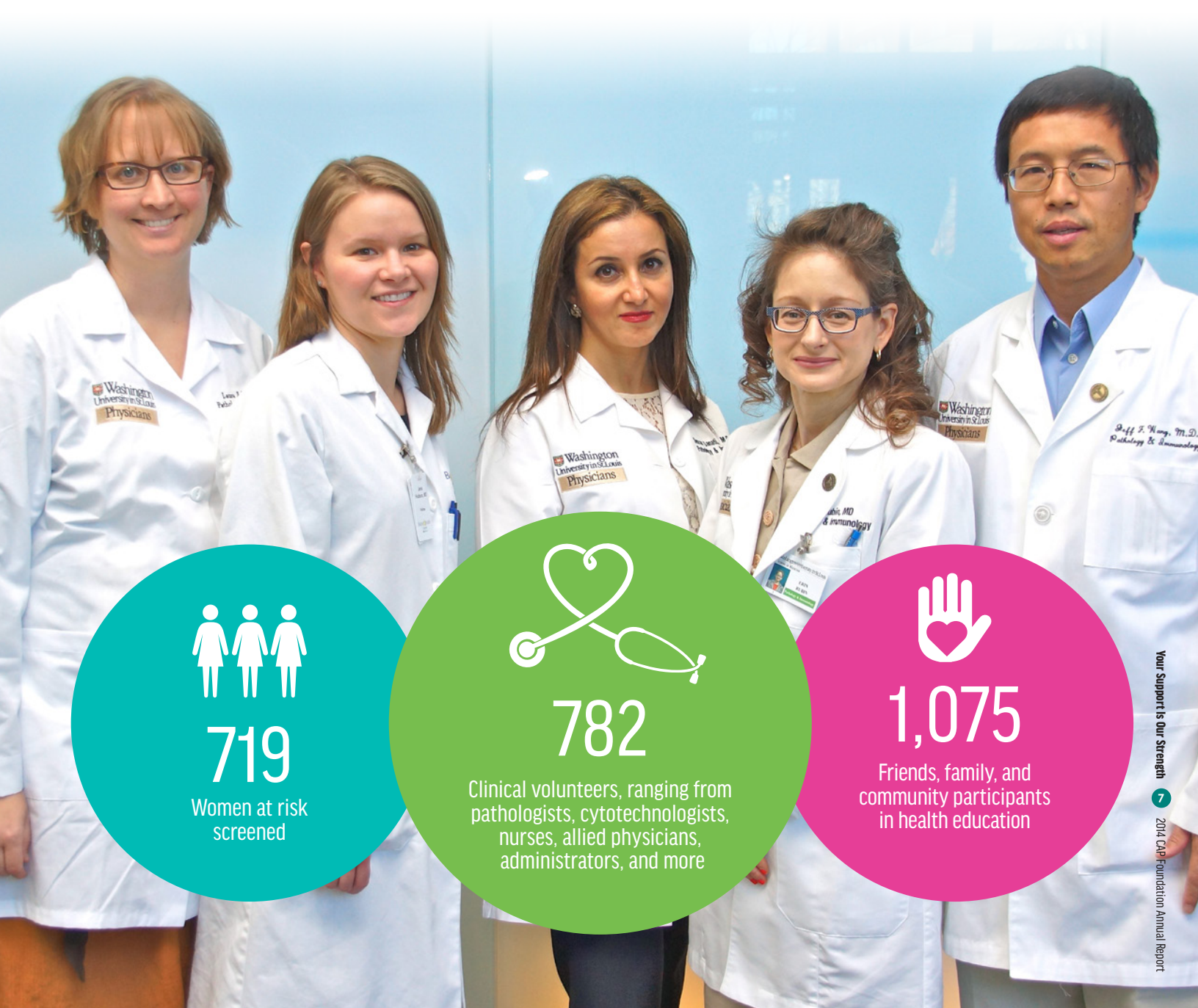
# Our Impact: 2014 **see**test&treat<sup>®</sup>

## Strengthening Results, Extending Our Reach

Donors made a difference in 2014, fueling See, Test & Treat programs in which pathologists lead the coordinated delivery of free cervical and breast cancer screening and same-day results to women in need.

Backed by our 2014 proven success, the CAP Foundation is on track to deliver on an ambitious goal: Fund up to 11 See, Test & Treat events in 2015.

## SNAPSHOTS OF SERVICE IN 2014





## Public Health Data Underscores Urgent, Continued Need for **seetest&treat**<sup>®</sup>

The American Cancer Society reports that in 2014:

“The prevalence of recent Pap test use was lowest among women with no health insurance and recent immigrants—those living in the US less than 10 years.”

“Reaching those populations can be difficult and costly and requires ongoing coordination with community partners and health care providers.”

“However, this targeted approach is most effective for reducing the burden of these cancers and the associated disparities associated with their diagnosis and treatment.”

In a 2013 survey of health care access, affordability, and insurance complexity, the Commonwealth Fund reports that:

“More than one third (37%) of US adults **went without recommended care**, did not see a doctor when they were sick, or failed to fill prescriptions **because of costs**.”

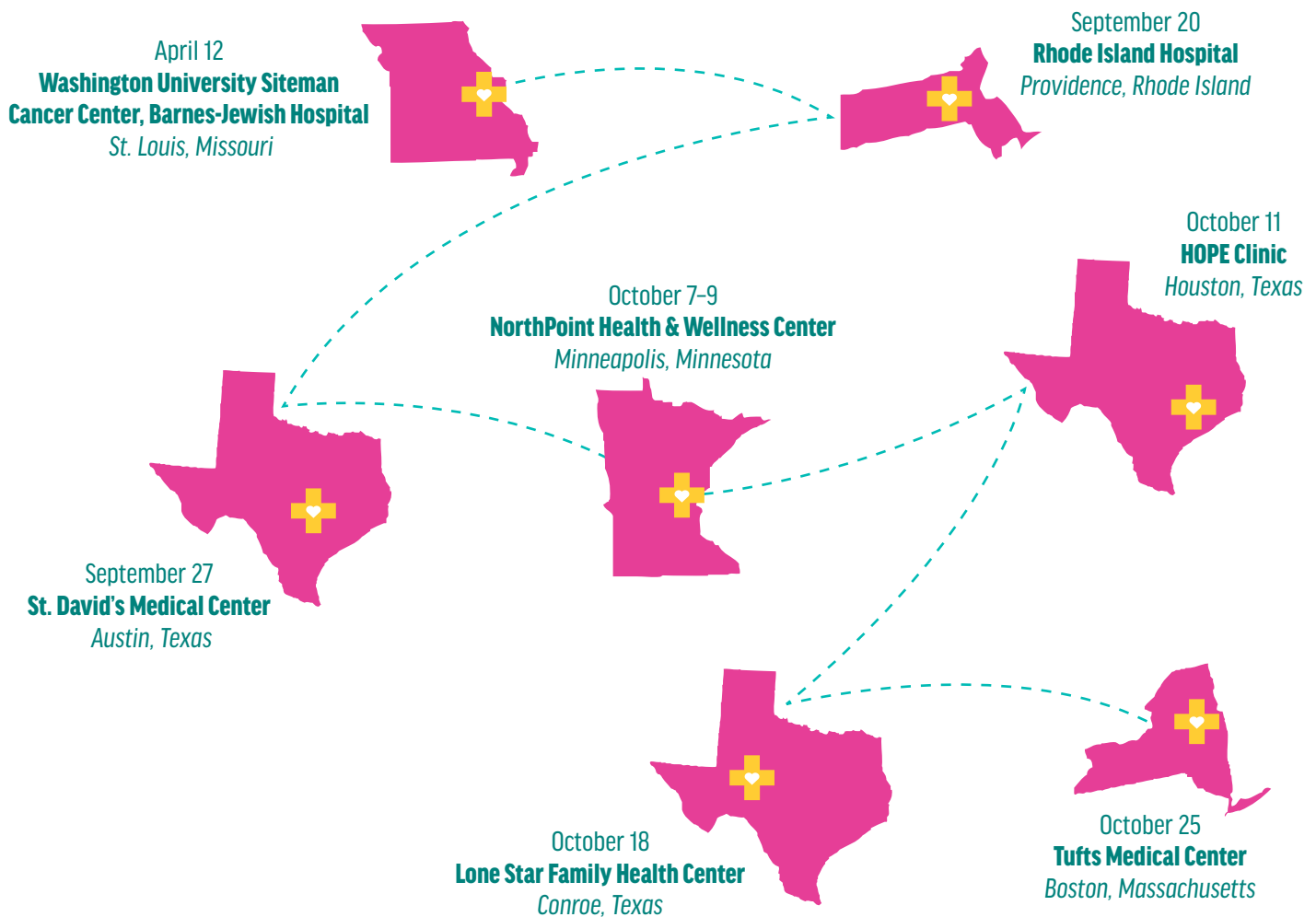
### Help Keep Up Our Good Work

- Through financial, matching, and in-kind donations
- Through time, expertise, and service
- Through planned giving and recurring donations





## Where have we been this year?



# Meet Next-Generation Pathologists

## Advanced Training Elective in Translational Diagnostics

*This award provides four weeks of hands-on training focused on developing novel histopathology assays.*

### Host & Site:

Ventana Medical Systems,  
Tucson, Arizona

### Award Recipients:

#### **Daniel J. Fix, MD**

University of Maryland Department of Pathology  
College Park, Maryland

### Gaining Insights, Spurring Interests

"The training made me rethink my preconceptions about industry and academics, realizing that many of my professional goals can be met in either setting. It was valuable to see how new tools are developed for use in the clinical setting, and the vast amount of work that goes into not only identifying new biomarkers, but the even more difficult task of turning that into a reliable assay for clinical use. It also gave me insights into new and exciting areas of interest in colorectal carcinoma research."

#### **Lik Hang Lee, MD**

University of Calgary  
Alberta, Canada

### Supplementing Pathology Education

"At Ventana, I was able to learn about critical aspects of the practice of pathology including topics to which we have limited exposure during residency. An obvious example is in regard to immunohistochemistry (IHC), one of Ventana's core business activities. Residents often order IHC stains to assist with diagnosis, as prognostic and predictive markers, and to help determine patient therapy. However, they frequently do not understand IHC intricacies and issues. At Ventana, not only did I learn about the development of IHC stains from concept to commercial product, I was able to also contribute to the development of several stains. This experience and knowledge will serve me well as a pathologist."

## Geraldine Colby Zeiler Cytotechnology Awards

*Through the generosity of William B. Zeiler, MD, FCAP, and in honor of his late wife, who was a Mayo Clinic-trained cytotechnologist, this fund awards up to five cytotechnology students during their training.*

### Award Recipients:

#### **Melody Castellon**

UCLA School of Cytotechnology  
Los Angeles, California

#### **Tamara Cobb**

Medical Education Training Campus  
Cytotechnology Program  
Ft. Sam Houston, Texas

#### **Sarah Goletz**

Indiana University School of Medicine  
Health Professions  
Cytotechnology Program  
Indianapolis, Indiana

#### **Mohini Mehta**

Rhode Island School of Cytology  
Providence, Rhode Island

#### **Jeffrey Wilks**

Medical Education Training Campus  
Cytotechnology Program  
Ft. Sam Houston, Texas



## 2014 William R. Bynum, MD, Scholarship Fund: Medical Technologist Award

*Working with the Missouri Society of Pathologists, the CAP Foundation supports the advancement of medical technologists in their final academic year.*

### Award Recipients:

#### **Caroline Braun**

North Kansas City Hospital School of  
Clinical Laboratory Science  
Kansas City, Missouri

#### **Amanda Kampwerth**

Mercy Hospital School of  
Clinical Lab Science  
St. Louis, Missouri

## Informatics Awards

*New in 2014, the CAP Foundation supported pathology resident travel to the CAP's annual conference to gain continuing education and exposure that will advance knowledge of medical informatics in pathology and the related impact on patient care.*

### Award Recipients:

#### **Caleb Cheng, MD**

Cedars-Sinai Medical Center  
Los Angeles, California

"In this amazing experience, I attended several courses including one that detailed informatics experiences at Massachusetts General Hospital (MGH). In October, I will be rotating at MGH for pathology informatics, and so I was able to arrange for additional learning experiences at the institution. I also learned about the basics of these technologies over several sessions. All of this knowledge will serve me well in the coming year."

#### **Lik Hang Lee, MD**

University of Calgary  
Alberta, Canada

"At the conference, I learned innovative ways to make electronic medical records and laboratory information systems have a stronger and more engaging impact on clinicians with the goal of improving patient care. I gained tremendous knowledge about new products and innovations through the vendor exhibits. Furthermore, I was able to meet and network with several of the 'big name' pathologists in informatics. This is an important step in the development and integration of pathology informatics into my professional career."

#### **Patrick C. Mathias, MD, PhD**

University of Washington Medical Center  
Seattle, Washington

"Multiple sessions helped me achieve my learning goals, which were to learn general approaches to managing test utilization and assigning value to laboratory services, as well as to learn about next-generation sequencing experiences at other institutions. I came away with many good ideas for utilization and informatics best practices, and I gleaned multiple examples of focused, informatics-based quality improvement projects—all of which I will disseminate to faculty at my institution."

## John H. Rippey Grant for Laboratory Quality Assurance

*Funding two innovative projects that aim to advance patient care or patient safety through laboratory quality assurance improvement efforts, this grant in 2014 supported CAP member research in flow cytometry, which aimed to reduce and potentially automate assay variability. In another project, our grant made it possible to produce training for continuous improvement systems.*

### Award Recipients:

**Daniel S. Herman, MD, PhD and David P. Ng, MD, PhD, FCAP**

University of Washington Medical Center  
Seattle, Washington

"Ultimately, our goal will be the creation of open source tools that will automatically perform specified parameter extractions, sample-specific quality control, and longitudinal quality management through moving-average calculations. By creating these tools, we hope to democratize and speed the adoption of this technology among flow cytometry laboratories and instrument vendors."

**Joe Rutledge, MD, FCAP**

Seattle Children's Hospital  
Seattle, Washington

"Our laboratory led the hospital's adoption of the Toyota Production System as a vehicle for continuous improvement. In the last two years, we have instituted and refined a daily management system (DMS) that is now often a site for healthcare executives' tours and laboratory colleagues visiting our hospital. With the Rippey Grant, we will produce a webinar with embedded video so that other laboratories can construct one component of their own DMS to enhance laboratory quality and patient safety."

## Leadership Development Awards

*This long-standing program immerses pathology residents in issues confronting the specialty, particularly those that illustrate the need to deliver patient-centric care. Awarded up to \$1,000 to offset travel expenses, select young pathologists travel to the CAP Policy Meeting, or the Residents Forum fall or spring meeting.*

### Award Recipients:

**Melissa M. Blessing, DO**

Mayo Clinic  
Rochester, Minnesota

"Learning how issues such as meaningful use criteria and SGR apply to pathology compared to other fields of medicine is empowering. It is essential that we have a voice in these important issues. As my career progresses I hope to continue attending CAP Policy meetings, serving on relevant committees, and educating myself and my colleagues on current health policy issues facing our subspecialty."

**Eric Q. Konnick, MD, MS**

University of Washington,  
Seattle, Washington

"I learned a great deal from speaking to pathologists from diverse practice settings who I would not otherwise had a chance to meet, and I came away with a better understanding of the professional landscape of pathology and medicine in general. And while I have already been speaking directly with staff from my representatives and senators, I gained specific new insights—for example, we may need to identify and engage with targeted bureaucrats who are more directly responsible for determining how and what physicians are paid."

**Patricia M. Raciti, MD**

New York Presbyterian-Columbia University Medical Center  
New York, New York

"I gained exposure to aspects of pathology that are beyond the scope of traditional residency training. The importance of continued engagement with the CAP as well as in my local and state pathology societies was clear. Most significantly, I learned that I can have the most impact by speaking to and educating politicians, political aides, and my colleagues on how political issues affect clinical practice."



From left to right: Melissa M. Blessing, DO  
Lewis A. Hassell, MD, FCAP



From left to right: Eric Q. Konnick, MD  
Lewis A. Hassell, MD, FCAP



From left to right: Patricia M. Raciti, MD  
Lewis A. Hassell, MD, FCAP

# Partnership: “Involve me and I learn”



In 2014, Leadership Development Award program participants were paired with a partner member of the CAP's House of Delegates.

Delegate and partner Meenakshi Singh, MD, FCAP, then a pathology fellowship director at Stony Brook University in New York, reported:

“I enjoyed meeting and having in-depth discussions with Dr. Raciti. We stayed in touch this year after she began her fellowship. I was thrilled to mentor a dedicated and brilliant young pathologist. As a chair, I have a great interest in formal mentoring programs for residents, fellows, and early-career pathologists. These efforts made in partnership with the CAP will result in an effective and sustained impact on the career of many pathologists.”

## **Keitges Program on Medical Ethics**

Through the Pierre W. Keitges, MD, Medical Ethics Endowment Fund, the CAP Foundation sponsors education specific to medical ethics at the CAP's annual meeting, delivering enrichment that engages pathologists to address the changing landscape of medical issues. At CAP '14, participants probed problematic issues around “Disclosing Harmful Pathology Errors to Colleagues, Treating Clinicians, and Patients”, a session taught by Suzanne Dintzis, MD, PhD, FCAP, and Mari Rendi, MD, PhD, FCAP.

# The Herbek Humanitarian Award



From left to right: Lewis A. Hassell, MD, FCAP  
Barbarajeane Magnani, PhD, MD, FCAP  
Gene Herbek, MD, FCAP

## Presented at CAP '14, Chicago

**CAP Member Recipient:** Barbarajeane Magnani, PhD, MD, FCAP

**Grant Amount:** \$7,500

**Sunday, September 7, 2014**

For the third consecutive year, the Jean and Gene Herbek Humanitarian Award recognized a CAP member dedicated to enhancing See, Test & Treat beyond its core services or to fulfilling an unmet need.

In 2014, Barbarajeane Magnani, PhD, MD, FCAP, pathologist-in-chief at Tufts Medical Center, Boston, received the honor. For more than five years, Dr. Magnani has spearheaded See, Test & Treat screenings to serve patients in struggling neighborhoods and communities of Boston. She will apply the monetary component of the award to conduct and publish a study evaluating five years of See, Test & Treat program impact. The data she'll explore will yield valuable evidence to propel our program to serve more women and families at risk.

Dr. Magnani says See, Test & Treat brings the patient and the pathologist closer together. "Patients can pull aside the curtain and see that pathologists are the doctors behind the diagnosis," she said.

**"Our ability to grow our programs and to bestow the Herbek Humanitarian Award would not be possible without the generous support of our donor community," explained 2014 CAP Foundation Board President Lewis A. Hassell, MD, FCAP as he presented the award at CAP '14. "To all who support the CAP Foundation and See, Test & Treat, we thank you."**

The award is named for 2013-2015 CAP President Gene N. Herbek, MD, FCAP, who first introduced the See, Test & Treat cancer screening program 15 years ago, and for his wife Jean, who shares his commitment.



“See, Test & Treat also allows patients to pull aside the curtain and see that pathologists are the doctors behind the diagnosis.”

– *Barbara Jean Magnani, PhD, MD, FCAP*  
2014 Herbek Humanitarian Award Winner

# St. Louis, Missouri

April 12, 2014

## ORGANIZATION

Barnes-Jewish Hospital and the Siteman Cancer Center, in partnership with the Washington University School of Medicine in St. Louis

## PARTICIPANTS

89 women screened

## HIGHLIGHTS

12.5% received abnormal Pap test results; 20.5% received abnormal breast screenings.

## ORGANIZER

Erin Rubin, MD, FCAP







# Providence, Rhode Island

September 20, 2014

## ORGANIZATION

Rhode Island Hospital in partnership with Women & Infants Hospital at the Lifespan Community Health Center

## PARTICIPANTS

40 women screened

## HIGHLIGHTS

One breast screening resulted in an early diagnosis of invasive ductal carcinoma.

## ORGANIZER

Latha Pisharodi, MD, FCAP



Austin,  
**Texas**

September 27, 2014

**ORGANIZATION**

St. David's Medical Center

**PARTICIPANTS**

54 women screened

**HIGHLIGHTS**

An additional 150 members of the community participated in health fair offerings, such as healthy cooking demonstrations and general cancer education.

**ORGANIZER**

Jennifer E. Blankenship, MD, FCAP

# Minneapolis, Minnesota

October 7-9, 2014

## ORGANIZATION

NorthPoint Health & Wellness Center in partnership with Hennepin County Medical Center physicians and staff

## PARTICIPANTS

233 women screened

## HIGHLIGHTS

Each day of the three-day program targeted specific ethnicities by providing culturally appropriate education and information.

## ORGANIZER

Bradley M. Linzie, MD, FCAP



# Houston, Texas

October 11, 2014



## ORGANIZATION

HOPE Clinic partnered with staff from Houston Methodist Hospital, Baylor College of Medicine, MD Anderson Cancer Center, University of Texas Health, and Texas Children's Hospital

## PARTICIPANTS

147 women screened

## HIGHLIGHTS

Approximately 10% received abnormal Pap test results.

## ORGANIZER

Donna M. Coffey, MD, FCAP, and Patricia Chevez-Barrios, MD, FCAP



# Conroe, Texas

October 18, 2014

## ORGANIZATION

Lone Star Family Health Center

## PARTICIPANTS

121 women screened

## HIGHLIGHTS

Out of the 20% of abnormal breast screenings, four cancer cases were discovered and referred for additional testing and treatment.

## ORGANIZER

Kyle L. Eskue, MD, FCAP



**Boston,  
Massachusetts**  
October 25, 2014

**ORGANIZATION**

Tufts Medical Center

**PARTICIPANTS**

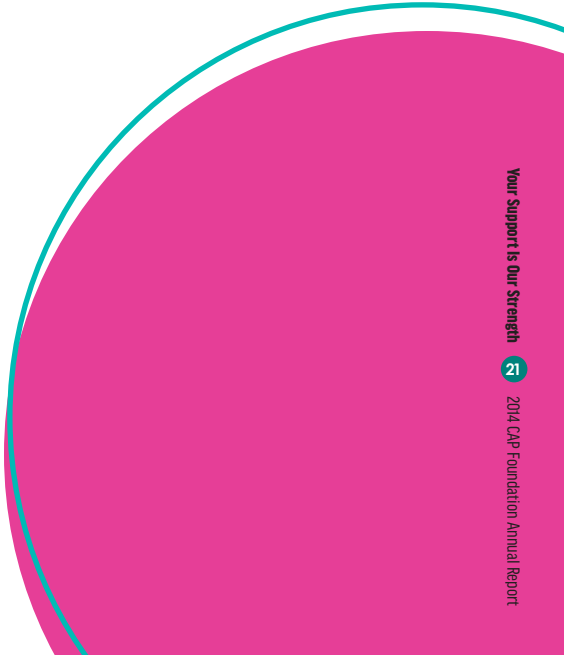
35 women screened

**HIGHLIGHTS**

23% of cervical cancer screenings were found to be abnormal.

**ORGANIZER**

Barbarajean Magnani, PhD, MD, FCAP





# The Impact of See, Test & Treat **IN JUST ONE DAY** at the Lone Star Family Health Center

By Marilyn Kasmiersky, Director of Business Development  
Lone Star Family Health Center,  
Conroe, Texas

Of our 121 registered patients, there were eight colposcopies, two endometrial biopsies, 45 mammograms, four breast cancer detections, and two oral cancer detections. We referred 35 ladies to our eligibility manager, and 30 made appointments for the health care marketplace. In addition, 142 patients and family members attended the educational speaker series, and we had 14 community partners sharing knowledge.

All of the ladies with atypical test results were connected with our case manager to navigate to the best resources for them individually. Some qualified for and benefitted from Medicaid Breast Cancer Services. One qualified for our health system's financial assistance, and another accessed The Rose, a Texas preventive care program funded through the Cancer Prevention and Research Institute of Texas.

**I know we made a difference in so many lives with the CAP Foundation's support and the See, Test & Treat grant.**

## Meet Champions of Patient-Centered Service

Pathologists who coordinate and lead See, Test & Treat screenings connect growing numbers of patients and families with the community of clinical care providers they need. Get to know the commitments and insights that spur our collective success:

### **Donna M. Coffey, MD, FCAP**

Dr. Coffey teamed with Patricia Chavez-Barrios, MD, FCAP, to lead the Houston HOPE Clinic See, Test & Treat.

"With the highest percent of medically uninsured adults in the nation, Texas urgently needs the See, Test & Treat program. Moreover, cervical and breast cancers are more common and more likely to be fatal among our growing minority populations. But with regular screening, these women can learn more about their risks, and we can detect cancers early when the potential for survival is greatest."

### **Kyle L. Eskue, MD, FCAP**

Dr. Eskue led See, Test & Treat in Conroe, Texas, at the Lone Star Family Health Center where 53% of adults in the community are medically uninsured.

"Our goal is not simply to provide same-day screenings and results. We also want to connect participants to an established medical home so that their comprehensive, long-term medical needs can be met."

### **Latha Pisharodi, MD, FCAP**

With a second annual See, Test & Treat in Providence, Rhode Island, Dr. Pisharodi widened our patient reach while raising the visible value of pathologists in the community.

"We are applying what we learn from one event to the plans and resources of the next. What did I learn from my See, Test & Treat? That teamwork, collaboration, and dedication to excellence lead to quality, successful care. At the end of it all, we were able to help women in Rhode Island receive medical care."

### **Erin Rubin, MD, FCAP**

Dr. Rubin led the See, Test & Treat at Barnes-Jewish Hospital and the Siteman Cancer Center, in partnership with the Washington University School of Medicine in St. Louis.

"This was a great opportunity for my institution and department to show patients that a good pathologist is just as important as a good surgeon."

**Bradley M. Linzie, MD, FCAP**

Dr. Linzie's annual, multiday See, Test & Treat screenings at the NorthPoint Health & Wellness Center in Minneapolis, Minnesota, are now in their 10th year.

"I decided to show people something that only a pathologist could. I let them look in the other side of my dual-headed microscope and showed them what cancer cells, their own cells, and healthy tissues look like. People are amazed by what they can see."

"The looks of amazement on their faces made it seem all new to me too. I realized that I had stumbled onto a way to give patients an unforgettable positive memory about the Pap test and pathologists."

**Jennifer E. Blankenship, MD, FCAP**

Dr. Blankenship led her first See, Test & Treat in Austin, Texas. The program was positively evaluated by the Cancer Prevention & Research Institute of Texas.

"See, Test & Treat connects women with care in their communities—care that speaks their language and understands their challenges. With regular screening, these women can learn more about their unique risks, and we can detect cancers early, when the potential for survival is greatest."

## Insights from Attending Pathologists

**Timothy Craig Allen, MD, JD, FCAP**

University of Texas Medical Branch at Galveston  
*Galveston, Texas*

"I attended the HOPE Clinic See, Test & Treat, and it became glaringly obvious: This is public health and this model is the future of medicine—care that is highly efficient and highly coordinated, with patient testing and results delivered in the same day, all in a manner that is dignified and respectful."

**Michael J Misialek, MD, FCAP**

Newton-Wellesley Hospital  
*Boston, Massachusetts*

"I met a See, Test & Treat patient who was diagnosed with breast cancer at the same event a year prior. Ironically, I consider her one of the lucky ones. Her breast cancer was diagnosed quickly, and she was immediately connected to treatment in her community. The patients seen at these events are only a fraction of the vulnerable population in need. I can't help but wonder how many other women are still out there with diagnoses that need to be found."

**Edward O. Uthman, MD, FCAP**

Oakbend Medical Center  
*Richmond, Texas*

"I participated in my first See Test & Treat, and I have no idea how the CAP Foundation delivers such a big-scale, complex, multidisciplinary project—but it happened! In a magical trick that I don't think even the most lavish VIP concierge medical practice has ever pulled off, the Pap tests for all patients were reported in plenty of time for the gynecologists to perform the needed colposcopies the very same day."

## Patients Speak: The Strength of See, Test & Treat

**Kieshia Bell, St. Louis, Missouri**

CAP Foundation See, Test & Treat patient

"I gained much more than cancer screening from the See, Test & Treat pathologists here in St. Louis today. It's been a full day of activities and education. Pathologists showed me healthy and unhealthy cells compared under a microscope—these doctors rock! I know my daughter would rather be at the park today, but I also know that if I am not healthy, I'll be no good to her. To take care of my children, I have to take care of me."

**Michelle Dodson, St. Louis, Missouri**

CAP Foundation See, Test & Treat patient

"Not only did they provide the routine cervical and breast cancer screening I needed, but they connected me with a participating patient navigator here so I had support to help me enroll in Missouri's Health Insurance Exchanges."

**Maltina Rouch, Houston, Texas**

CAP Foundation See, Test & Treat patient

"Programs like this empower women to seek help and give them a sense of togetherness. Lately, I have been having some health problems, and because I am currently out of work, I would not be able to get these tests done any other way."

**Emma Estrada, Conroe, Texas**

CAP Foundation See, Test & Treat patient

"I waited 10 years to get a mammogram; thanks so much to the pathologists who offer this program. Women should not be afraid to get screening. Today's See, Test & Treat made me feel comfortable, and I was able to talk with doctors and ask questions. The best part of the program was talking with a pathologist; I learned so much about why a Pap test is important. "



## Delivering an Opportunity for My Institution

By Erin Rubin, MD, FCAP

*Posted on CAPConnect, the CAP-member online community*

Most of the 90 patients who participated in the recent See Test & Treat event at the Siteman Cancer Center in St. Louis want to have regular cervical screenings and mammograms, but it comes down to ability and access.

Whether it's transportation or lack of insurance—or more often both of these plus more—these women are not able to receive necessary medical testing.

### Here are just two of their stories:

"There is a lot of cancer in my family," said Pam, who hasn't had health insurance since 2008, when she lost her job at a bank. "The waiting and not knowing had me living in fear. My aunt died of ovarian cancer. I have never been treated the way that I was treated today. Everyone here treated me like a queen, not just a number. Everyone here is so nice. They want to be here." Pam's Pap test was normal.

"Here they make the process feel normal," said Nancy. "Volunteers are happy to be here. When I go to some of the Medicaid clinics, I wait 3–4 hours. Here, they are welcoming. They respect me. No one is looking down on me ... Here they don't treat us like charity." Nancy, 42, hasn't had a Pap test or mammogram, even though she has a family history of cancer—four aunts have died from breast cancer.

See, Test & Treat is just one of the CAP Foundation-sponsored opportunities to emphasize the important role of pathologists in patients' care and health. An accurate diagnosis is imperative to patient care.

"Unfortunately, lack of routine screening for cervical and breast cancer leads to a lack of detection amongst the underserved. See, Test & Treat provides a navigated model of health care and education that empowers women and their families to access routine care. "

## From Uninsured and Undiagnosed to Treatment in 40 days

Marilyn Kasmiersky, Director of Business Development | Lone Star Family Health Center | Conroe, Texas

"We identified a breast lump in one of the See, Test & Treat patients we screened. That day, we referred her to one of our care providers for follow-up care. She was able to get a biopsy right way, which confirmed that the lump was a malignant tumor. She had surgery within a week to remove the tumor. Had it not been for See, Test & Treat, there is no telling how long this woman would have gone undiagnosed. She went from uninsured and undiagnosed to treatment in 40 days. Thank you so much for championing this event in our community. I hope that we can help it grow each year!"



**Through the honor roll, the CAP Foundation expresses its deepest gratitude to the following members, friends, staff, corporations, and foundations for the support they have generously given to the CAP Foundation during 2014 and throughout their lifetime.**

**Lifetime Giving of \$1,000,000 or more**

William B. Zeiler, MD, FCAP  
College of American Pathologists

**Lifetime Giving of \$250,000 or more**

Dr. and Mrs. Daniel J. Hanson  
The Serafy Foundation  
(Seracon Diagnostics Company)  
(Nicholas T. Serafy Jr.)

**Lifetime Giving of \$100,000 or more**

Abbott Laboratories  
Genentech  
Los Angeles Society of Pathologists  
(James F. Keefe, MD, FCAP)  
Olympus America, Inc.  
Rippey Fund Donors (Southwest and Great Lakes Regional Quality Groups)  
University of Pittsburgh Medical Center  
(Michael J. Becich, MD, PhD, FCAP)

**Lifetime Giving of \$50,000 or more**

Dr. and Mrs. Stephen N. Bauer  
Dr. Robert L. Breckenridge and  
Ms. Alison Blessing  
Dr. and Mrs. Gene N. Herbek  
Dr. Rebecca L. Johnson and  
Mr. Michael A. Kelly  
The Esther & Hyman Rapport  
Philanthropic Trust  
(Roger D. Klein, JD, MD, FCAP)  
Dr. and Mrs. Stanley J. Robboy  
Dr. and Mrs. Jared N. Schwartz  
Aperio  
Baxter Healthcare Corporation  
FCm Travel Solutions  
Hologic  
Pathology Education Consortium  
(Bruce A. Friedman, MD, FCAP)  
The Robert Wood Johnson Foundation  
Ventana Medical Systems, Inc.

**Lifetime Giving of \$40,000 or more**

Dr. Desiree A. Carlson and  
Mr. Stephen P. Sullivan  
Dr. and Mrs. Edward P. Fody  
Mr. and Mrs. Charles Roussel  
Dr. and Mrs. Jay F. Schamberg  
Bayer Diagnostics

McKesson Information Solutions, Inc.  
The Coleman Foundation  
Consultants for Pathology and  
Laboratory Medicine  
Sakura Finetek USA, Inc.  
US LABS/Esoterix

**Lifetime Giving of \$30,000 or more**

Anonymous  
E. Randy Eckert, MD, FCAP  
Dr. and Mrs. Richard C. Friedberg  
Dr. and Mrs. Eric F. Glassy  
Dr. and Mrs. William V. Harrer  
Dr. and Mrs. Andrew E. Horvath  
Gail R. Janes, PhD  
(In memory of Chester J. Herman,  
MD, FCAP)  
Dr. and Mrs. V.O. Speights Jr.  
Drs. Emily E. Volk and Daniel D. Mais  
Media Directions Creative Group  
(Marvin Kogan)  
Nikon, Inc.  
Research and Diagnostic Systems, Inc.  
Smith Kline Beecham  
University of Michigan

**Lifetime Giving of \$20,000 or more**

Anonymous  
Paul Bachner, MD, FCAP  
Dr. and Mrs. David J. Blomberg  
Kris L. Challapalli, MD, FCAP  
Kim A. Collins, MD, FCAP  
Dr. Patricia A. Devine and  
Mr. William Phinney  
Dr. and Mrs. Alan F. Frigy  
Dr. Yvonne and Mr. Patrick Hearn  
Mary E. Kass, MD, FCAP  
Dr. and Mrs. Alfred Lui  
John G. Newby, MD, FCAP  
Dr. and Mrs. Dennis G. O'Neill  
Thomas G. Puckett, MD, FCAP  
Alvin M. Ring, MD, FCAP  
The Daniel Seckinger Trust  
(In memory of Daniel Seckinger,  
MD, FCAP)  
Dr. and Mrs. Thomas M. Wheeler  
Robert S. Zirl, MD, FCAP  
Abbott Molecular  
Chrisope/Remel Technology Inc.  
Community Memorial Foundation  
mTuitive Solutions  
Misys Healthcare Systems

NTT Data  
Pathology Associates of Albuquerque, PA  
Pfizer Global Medical Relations  
Strategic Offsites Group, Inc.

**The Herbek See, Test & Treat® Founders Circle \$25,000 Donors**

Dr. and Mrs. Stephen N. Bauer  
Dr. Robert L. Breckenridge and  
Ms. Alison Blessing  
Dr. Patricia A. Devine and  
Mr. William Phinney  
Dr. and Mrs. Edward P. Fody  
Dr. and Mrs. Richard C. Friedberg  
Dr. and Mrs. Gene N. Herbek  
Dr. and Mrs. Andrew E. Horvath  
Dr. Rebecca L. Johnson and  
Mr. Michael A. Kelly  
Dr. and Mrs. Stanley J. Robboy  
Mr. and Mrs. Charles Roussel  
Dr. and Mrs. Jay F. Schamberg  
Dr. and Mrs. Jared N. Schwartz  
Drs. Emily E. Volk and Daniel D. Mais

**The Herbek See, Test & Treat® Founders Circle \$15,000 Donors**

Anonymous  
Dr. and Mrs. David J. Blomberg  
Dr. Desiree A. Carlson and  
Mr. Stephen P. Sullivan  
Alfred W. Campbell, MD, FCAP  
Dr. and Mrs. Alan F. Frigy  
Dr. and Mrs. Eric F. Glassy  
Dr. Richard R. and Ms. Patsy C. Gomez  
Dr. and Mrs. William V. Harrer  
Dr. Yvonne and Mr. Patrick Hearn  
Drs. Bharati S. and Suketu Jhaveri  
Kathryn T. Knight, MD, FCAP  
Dr. Jennifer Laudadio and  
Mr. Ethan Igleheart  
Dr. and Mrs. Alfred Lui  
James J. Navin, MD, FCAP  
Dr. and Mrs. Dennis G. O'Neill  
C. Dean Pappas, MD, FCAP  
Drs. Michael and Janet Prystowsky  
Dr. and Mrs. V.O. Speights Jr.  
Dr. Elizabeth A. Wagar and  
Mr. Michael Gerson  
Dr. Ronald L. Weiss and Ms. Peggy Ahlin  
Dr. and Mrs. Thomas M. Wheeler  
Drs. R. Bruce Williams and  
Susan Van Hook Williams

**The following are individuals who were honored or remembered in 2014 with a gift:**

**Dayle Aller**  
Raymond D. Aller, MD, FCAP

**Charles Anderson**  
Karim E. Sirgi, MD, FCAP

**R. Marshall Austin**  
Sonya Naryshkin, MD, FCAP

**Dr. Baburao and Mrs. Sunanda Baburao**  
Vinod B. Shidham, MD, FCAP

**Camillo Bologna, MD**  
Stephen M. Bologna, MD, FCAP

**Lloyd F. Craver**  
Jeffrey L. Craver, MD, FCAP

**Joseph A. Cunningham, MD**  
Fred E. Gilbert, MD, FCAP

**Joseph C. Dry**  
Jane K. Dry, MD, FCAP

**Jose M. Elmudesi**  
Francisco A. Elmudesi, MD, FCAP

**Shirley W. Freedman**  
S. Robert Freedman, MD, FCAP

**Richard C. Friedberg, MD, FCAP**  
Michael J. Misialek, MD, FCAP

**Aaron and Kelly Fulcer**  
Rebecca Fulcer

**MaryAnn Gibson**  
Karim E. Sirgi, MD, FCAP

**Dr. and Mrs. Patrick Godbey**  
Dabbs, Hickman, Hill & Cannon, LLP

**Frances Haas**  
Thomas S. Haas, DO, FCAP

**David B. Hahn**  
Karim E. Sirgi, MD, FCAP

**Daniel J. Hanson, MD, FCAP**  
Marion Malone

**Gene N. Herbek, MD, FCAP**  
William W. West, MD, FCAP

**Chester J. Herman, MD, PhD**  
Gail R. Janes, PhD  
Joseph P. Leverone, MD, FCAP

**Patricia Hughey**  
Karim E. Sirgi, MD, FCAP

**Illinois Society of Cytology**  
Marikay Martin

**David Irvine**  
Karim E. Sirgi, MD, FCAP

**2014 Donor Honor Roll**

**Robert Kehr**

Mary Katherine Krause

**Ronald Knapik**

Carolyn Knapik

**Sydney Kowierske**

John W. Barnes, MD, FCAP

**Barbarajeane Magnani, PhD, MD, FCAP**Philip Giunta  
Charles Roussel**Marion Malone**

Kerry Lydon

**Michael McEachin, MD, MBA, FCAP**

Fred E. Gilbert, MD, FCAP

**Florence Michaelsen**

Julia Rankenburg

**Ruth Millar Thor**

Ann D. Thor, MD, FCAP

**Michael J. Misialek, MD, FCAP**

Jennifer Laudadio, MD, FCAP

**James Molden**

Daniel P. Molden, MD, FCAP

**Mary Lynn Moyer**

Geoffrey H. Moyer, MD, FCAP

**Bud O'Malley**

Barbara A. O'Malley

**Jane Potter**

Gene K. Potter, MD, FCAP

**Donald H. Quint, MD, FCAP**

Harold Z. Scheinman

**Rebecca Ritter**

Karim E. Sirgi, MD, FCAP

**Juan Rosai, MD, FCAP**

Richard N. Eisen, MD, FCAP

**Charles Roussel**Michael J. Misialek, MD, FCAP  
Karim E. Sirgi, MD, FCAP**Dorothee Roussel**Mary Katherine Krause  
Linda Parapetti**Cristina Sanchez**

German Sanchez-Casis, MD, FCAP

**Robin Scully**

William L. Thelmo, MD, FCAP

**Yasmina Sirgi**

Karim E. Sirgi, MD, FCAP

**Younna Sirgi**

Karim E. Sirgi, MD, FCAP

**William T. Snoddy**

Joyce E. Maldonado, MD, FCAP

**Diane Spanger**

Linda Parapetti

**Christine Stamatis**

Joseph Schramm

**Diana Sullivan**

Karen Balinski

**Thomas Trouillot**

Karim E. Sirgi, MD, FCAP

**Marty and Lynn Vaught**

David M. Parham, MD, FCAP

**Dr. Sharon Weiss**

Jerad M. Gardner, MD, FCAP

**Isabell Welch**

Michael T. Kafka, MD, FCAP

**J. Daniel Wilkes, MD, FCAP**Paul Bachner, MD, FCAP  
Pamela Cramer  
Daniel J. Hanson, MD, FCAP  
William V. Harrer, MD, FCAP  
Reba Wessell**William B. Zeiler, MD, FCAP**Kathleen A. Allen, MD, FCAP  
Marion Malone**President's Circle Platinum Level  
\$2,500+**Dr. and Mrs. Stephen N. Bauer  
Dr. Robert L. Breckenridge and  
Ms. Alison Blessing  
Dr. and Mrs. David J. Blomberg  
Alfred W. Campbell, MD, FCAP  
Dr. Desiree A. Carlson and  
Mr. Stephen P. Sullivan  
Cordova Family Trust  
(Lya Cordova-Latta)  
Michael A. Deck, MD, FCAP  
Dr. Patricia A. Devine and  
Mr. William Phinney  
Dr. and Mrs. Edward P. Fody  
Dr. and Mrs. Richard C. Friedberg  
Alan F. Frigy, MD, FCAP  
Dr. and Mrs. Eric F. Glassy  
Dr. Richard R. Gomez and  
Ms. Patsy C. Gomez

## The Hanson Family Charitable Fund

(Gerald R. Hanson, MD, FCAP)  
Dr. and Mrs. William V. Harrer  
Lewis A. Hassell, MD, FCAP  
Dr. and Mrs. Gene N. Herbek  
Dr. and Mrs. Andrew E. Horvath  
Drs. Bharati S. and Suketu Jhaveri  
Dr. Rebecca L. Johnson and  
Mr. Michael A. Kelly  
The Esther & Hyman Rapport  
Philanthropic Trust  
(Roger D. Klein, JD, MD, FCAP)  
Dr. Jennifer Laudadio and  
Mr. Ethan Igleheart  
Dr. and Mrs. Alfred Lui  
Marion Malone and George Molnar  
James J. Navin, MD, FCAP  
Dr. and Mrs. Dennis G. O'Neill  
C. Dean Pappas, MD, FCAP  
(Hallmark Pathology)  
Pathology Associates of Albuquerque PA  
(Peter Appenzeller, MD, FCAP)  
(Alexei Bakhirev, MD)  
(Bonnie A. Carmichael, MD, FCAP)  
(Michael J. Crossey, MD, PhD, FCAP)  
(Emily P. DeSantis, MD, FCAP)  
(James C. Elliott, MD, FCAP)  
(Hillary R. Elwood, MD, FCAP)  
(Richard M. Feddersen, MD, FCAP)  
(Robyn Gaffney, MD, FCAP)  
(Janet E. Griego, MD, FCAP)  
(Hank Hanna, MD, FCAP)  
(Andrew E. Horvath, MD, FCAP)  
(Jeffrey W. Huser, MD, FCAP)  
(Joseph C. Lee, MD, FCAP)  
(Jeremy C. Parsons, MD, FCAP)  
(Cordelia E. Sever, MD, FCAP)  
(James H. Spigel, MD, FCAP)  
(Shelly A. Stepenaskie, MD, FCAP)  
(Benjamin Wagenman, MD, FCAP)  
(Whitney M. Winham, MD, FCAP)  
(Omar M. Yousef, MD, FCAP)  
(Dahua Zhang, MD, PhD, FCAP)  
Drs. Michael B. and Janet H. Prystowsky  
Mr. and Mrs. Charles Roussel  
Dr. and Mrs. V.O. Speights Jr.  
Drs. Emily E. Volk and Daniel D. Mais  
Dr. Elizabeth A. Wagar and  
Mr. Michael Gershon  
Dr. Ronald L. Weiss and  
Ms. Peggy A. Ahlin  
Dr. and Mrs. Thomas M. Wheeler  
Drs. R. Bruce Williams and  
Susan Van Hook Williams  
William B. Zeiler, MD, FCAP**President's Circle Gold Level  
\$2,000-\$2,499**Kenneth J. Bloom, MD, FCAP  
Matthew Christensen  
Gail R. Janes, PhD  
Louis J. Zinterhofer, MD, FCAP**President's Circle Silver Level  
\$1,500-\$1,999**James M. Crawford, MD, PhD, FCAP  
Allen M. Gown, MD, FCAP  
John G. Newby, MD, FCAP  
Gang Wang  
(Academy of Medicine, Singapore)  
Robert S. Zirl, MD, FCAP**President's Circle Level  
\$1,000-\$1,499**Timothy C. Allen, MD, JD, FCAP  
Roberto J. Bayardo, MD, FCAP  
Sharon K. Bihlmeyer Gauthier, MD, FCAP  
Karl J. Blessinger, MD, FCAP  
David L. Booker, MD, FCAP  
Peter K. Bryant-Greenwood V, MD, FCAP  
Jeffrey D. Cao, MD, FCAP  
Pedro A. Carmona, MD, FCAP  
Matthew D. Carr, MD, FCAP  
Ronald Champagne, MD, FCAP  
Kim A. Collins, MD, FCAP  
Jessica M. Comstock, MD, FCAP  
Thomas J. Cooper Jr., MD, FCAP  
Teresa M. Cox, MD, FCAP  
(Lester D.R. Thompson, MD, FCAP)  
Edward F. DiCarlo, MD, FCAP  
Dr. Steven J. Drury  
E. Randy Eckert, MD, FCAP  
Everrett R. Engel Jr., MD, FCAP  
Edward Ewing, DO, FCAP  
George Fiedler  
Mary E. Fowkes, MD, PhD, FCAP  
S Robert Freedman, MD, FCAP  
Stephen A. Geller, MD, FCAP  
Gregory L. Gleason, MBA  
Sandra B. Grear  
William F. Hickey, MD, FCAP  
Gerald A. Hoeltge, MD, FCAP  
Robert D. Hoffman, MD, PhD, FCAP  
Bruce W. Hughes, MD, FCAP  
Jennifer L. Hunt, MD, MEd, FCAP  
Charles N. Iknayan, MD, FCAP  
Carmen J. Julius, MD, FCAP  
Michael T. Kafka, MD, FCAP  
Anthony A. Killeen, MD, PhD, FCAP  
Oliver S. Kim, MD, FCAP  
David W. Kindelberger, MD, FCAP  
Kathryn T. Knight, MD, FCAP  
Joseph P. Leverone, MD, FCAP  
Bradley M. Linzie, MD, FCAP  
Barbarajeane Magnani, PhD, MD, FCAP  
Guillermo G. Martinez-Torres, MD, FCAP  
Paul J. McCarthy, MD, FCAP  
Jill A. McGuire  
Maryrose T. Murphy  
Si V. Nguyen, MD, FCAP  
James L. Ownbey, MD, FCAP  
Diane L. Persons, MD  
Thomas G. Puckett, MD, FCAP  
Rahway Pathology  
(Barry M. Benisch, MD, FCAP)

(Michael A. Gistrak, MD, FCAP)  
(Scott Merlin, MD, FCAP)  
Richard D. Raskin, Esq.  
David M. Reardon, MD, FCAP  
James A. Robb, MD, FCAP  
Charles F. Romberger, MD, FCAP  
Assad J. Saad, MD, FCAP  
Mary R. Schwartz, MD, FCAP  
Mary Ann Sens, MD, PhD, FCAP  
Karim E. Sirgi, MD, MBA, FCAP  
Prudence V. Smith, MD, FCAP  
Gail H. Vance, MD, FCAP  
William W. West, MD, FCAP  
Louis D. Wright Jr., MD, FCAP  
Sang Wu, MD, FCAP  
Matthew A. Zarka, MD, FCAP

### **Governor's Circle \$500–\$999**

Anonymous (2)  
William D. Anderson, MD, FCAP  
Dale F. Andres, DO, FCAP  
Edward R. Ashwood, MD, FCAP  
Paul Bachner, MD, FCAP  
Jane A. Bennett-Munro, MD, FCAP  
Robert L. Bernstein, MD, FCAP  
Thomas M. Betlej, MD, FCAP  
Cathy O. Blight, MD, FCAP  
George E. Branam, MD, FCAP  
Henry G. Brown, MD, PhD, FCAP  
Joseph N. Carberry, MD, FCAP  
Michael B. Cohen, MD, FCAP  
Robert Cohen, MD, FCAP  
Gary L. Cooper, MD, FCAP  
William E. Doughty, MD, FCAP  
Kyle L. Eskue, MD, FCAP  
John T. Fallon, MD, PhD, FCAP  
Robert Farnham III, MD, FCAP  
Lisa Fatheree  
Louis W. Gierke, DO, FCAP  
Wayne W. Grody, MD, PhD, FCAP  
Thomas S. Haas, DO, FCAP  
Mary F. Hahn, MD, FCAP  
Orin R. Hayes, MD, FCAP  
Charles N. Iknayan, MD, FCAP  
Masashi Itano, MD, FCAP  
Donald A. Johnson, MD, FCAP  
Anand S. Lagoo, MD, PhD, FCAP  
Ronald B. Lepoff, MD, FCAP  
Christopher M. Leveque, MD, FCAP  
Alan Levin, MD, FCAP  
Kerry Lydon  
John C. Martin, MD, FCAP  
Larry W. Massie, MD, FCAP  
Terrance A. McBurney, MD, FCAP  
Pam S. Mix  
Dina R. Mody, MD, FCAP  
Kamala Murali, MD, FCAP  
Raouf E. Nakhleh, MD, FCAP  
Valerie L. Ng, MD, PhD, FCAP  
Dennis P. O'Malley, MD, FCAP  
Richard G. Patton, MD, FCAP

William B. Paxton, MD, PhD, FCAP  
William C. Pitts, MD, FCAP  
Miriam D. Post, MD, FCAP  
Victoria G. Reyes, MD, FCAP  
James E. Roberts, MD, FCAP  
Rene Rone, MD, FCAP  
Rachel L. Rucker-Schmidt, MD, FCAP  
Helen Senhauser  
Marcia C. Shattuck, MD, FCAP  
John H. Sinard, MD, PhD, FCAP  
Daniel D. Slagel, MD, FCAP  
Charles E. Slonaker III, MD, FCAP  
Stephanie A. Spingarn, MD, FCAP  
Ann D. Thor, MD, FCAP  
Paul N. Valenstein, MD, FCAP  
Francisco R. Velazquez, MD, FCAP  
Michael J. Waldron, MD, FCAP  
Tracey D. Wentz, MD, FCAP  
Robert M. White, MD, FCAP  
Michelle K. Zimmerman, MD, FCAP

### **Friends of the Foundation \$100–\$499**

Anonymous (3)  
Jared J. Abbott, MD, PhD, FCAP  
Academy of Medicine, Singapore  
(Noel Adachi)  
Thomas Adamec, MD, FCAP  
Martha N. Alderete, MD, FCAP  
Thomas J. Alford, MD, FCAP  
Randah Al-Kana, MD, FCAP  
Charles K. Allam, MD, FCAP  
Ira S. Allen, MD, FCAP  
Raymond D. Aller, MD, FCAP  
Imad Y. Almanaseer, MD, FCAP  
Amy E. Alspach, MD, FCAP  
The American Legion—People's  
Gas Post 336  
(Julia Rankenburg)  
Neelam Amin, MD, FCAP  
Cris J. Anderson, MD, FCAP  
James E. Anhalt, Jr., MD, FCAP  
Alexander J. Aplasca, MD, FCAP  
Thomas R. Arejola, MD, FCAP  
Axel A. Baez-Torres, MD, FCAP  
Soon Bahrami, MD, FCAP  
Raja M. Bahu, MD, FCAP  
Ashok M. Balsaver, MD, FCAP  
Nasima Banerjee, MD, FCAP  
Lyle W. Barksdale, MD, FCAP  
John W. Barnes, MD, FCAP  
Elizabeth A. Bauer-Marsh, MD, FCAP  
Richard D. Becker  
Lee G. Beckwith, MD, FCAP  
Joseph C. Benedict, MD, FCAP  
Audrey K. Bennett, MD, FCAP  
Rex C. Bentley, MD, FCAP  
Christopher O. Bibb, MD, FCAP  
George G. Birdsong, MD, FCAP  
Melissa M. Blann, MD  
Stephen M. Bologna, MD, FCAP

Charles E. Boonstra, MD, FCAP  
Lawrence H. Boram, MD, FCAP  
Aaron D. Bossler, MD, PhD, FCAP  
Eleni P. Bourtsos, MD, FCAP  
Kevin E. Bove, MD, FCAP  
Jennifer Brainard, MD, FCAP  
Mark D. Brissette, MD, FCAP  
Elisabeth Brockie  
Robert A. Brooks, MD, FCAP  
Ronald J. Bryant, MD, FCAP  
Marilyn M. Bui, MD, FCAP  
Peter R. Burke, MD, FCAP  
Theodore J. Burke, MD, FCAP  
Edward J. Burkhard Jr., MD, FCAP  
Leonard A. Caccavella  
Eileen M. Cahill, MD, FCAP  
Jeanette M. Camacho, MD  
Rafael Z. Campanini, MD, FCAP  
Allan C. Campbell, MD, FCAP  
Susan S. Cannon, MD, FCAP  
Michael J. Carey, MD, FCAP  
Brian K. Carlile, DO, FCAP  
Bonnie A. Carmichael, MD, FCAP  
Robert F. Carr Jr., MD, FCAP  
Karen C. Carroll, MD, FCAP  
James L. Caruso, MD, FCAP  
Victor Casas, MD, FCAP  
Mary E. Case, MD, FCAP  
James B. Cash Sr., MD, FCAP  
Edward W. Catalano Jr., MD, FCAP  
Wayne L. Chandler, MD, FCAP  
Anthony Chang, MD, FCAP  
Chung-Che Chang, MD, PhD, FCAP  
Ronald Chapnick, MD, FCAP  
Howard P. Charman, MD, FCAP  
Homer H. Cheng, MD, FCAP  
Hong Y. Choi, MD, FCAP  
Rebecca L. Christensen, MD, FCAP  
Stephen J. Cina, MD, FCAP  
Martha R. Clarke, MD, FCAP  
Donna M. Coffey, MD, FCAP  
Michael R. Coleman  
Terence J. Colgan, MD, FCAP  
Bradford S. Collins, MD, FCAP  
Christopher R. Conley, MD, FCAP  
James L. Connolly, MD, FCAP  
Jeanne A. Cooper, MD, FCAP  
Joseph M. Corson, MD, FCAP  
Doris P. Courington, MD, FCAP  
Pamela M. Cramer  
Robert E. Cranley Jr., MD, FCAP  
Gretchen S. Crary, MD, FCAP  
Richard V. Crisera, MD, FCAP  
Barbara A. Crothers, DO, FCAP  
John R. Dainauskas, MD, FCAP  
Clifton R. Daniel, MD, FCAP  
Diane D. Davey, MD, FCAP  
Gregory G. Davis, MD, FCAP  
Gregory J. Davis, MD, FCAP  
Inderjit Deol, MD, FCAP  
Premlata M. Desai, MD, FCAP

Nina R. Dhurandhar, MD, FCAP  
Craig A. Dise, MD, PhD, FCAP  
Jane Dowd  
Jane K. Dry, MD, FCAP  
Patrawadee Duangjak, MD, FCAP  
John K. Duckworth, MD, FCAP  
Michael C. Dugan, MD, FCAP  
Mo H. Duong, MD, FCAP  
H. Ivan Duran, MD, FCAP  
Natalie K. Durkacz  
Peter A. Dysert II, MD, FCAP  
Robin Eastman-Abaya, MD, FCAP  
John H. Eckfeldt, MD, PhD, FCAP  
Richard N. Eisen, MD, FCAP  
Rosana Eisenberg, MD, FCAP  
Norman Ende, MD, FCAP  
George W. English III, MD, FCAP  
Howard D. Epstein, MD, FCAP  
Yener S. Erozan, MD, FCAP  
Janice E. Errick, MD, PhD, FCAP  
Michael J. Esposito, MD, FCAP  
John G. Etheridge, MD, FCAP  
April A. Ewton, MD, FCAP  
Joseph P. Fanning, MD, FCAP  
William C. Faquin, MD, PhD, FCAP  
Jean Fede, MD  
Marc R. Filstein, MD, FCAP  
Julietta Fiscella, MD, FCAP  
Patricia M. Fishman, MD, FCAP  
Patrick L. Fitzgibbons, MD, FCAP  
Jean E. Forsberg, MD, FCAP  
John A. Foster, MD, FCAP  
Irwin S. Fox, MD, FCAP  
Mary Katherine Fox  
Marla J. Franks, MD, FCAP  
William G. Frederick, MD, PhD, FCAP  
David L. Gang, MD, FCAP  
Jerad M. Gardner, MD, FCAP  
Laura J. Gardner, MD, FCAP  
Lloyd L. Gardner, MD, FCAP  
Daniel W. Garland, MD, FCAP  
Vincent Gemellar, MD, FCAP  
Mohiedean Ghofrani, MD, MBA, FCAP  
William P. Gibbons, MD, FCAP  
Fred E. Gilbert, MD, FCAP  
M.G.F. Gilliland, MD, FCAP  
Philip Giunta  
Harry M. Givelber, MD, FCAP  
Guy C. Glenn, MD, FCAP  
Jacinto J. Gochoco Jr., MD, FCAP  
Steven P. Goetz, MD, FCAP  
Michael N. Gold, MD, FCAP  
Manuel A. Gomez, MD, FCAP  
Michael A. Graham, MD, FCAP  
Kenneth F. Grant, MD, FCAP  
C. Joyce Greathouse, MD, FCAP  
Emily A. Green, MD  
Jimmy W. Green, MD, FCAP  
Andrew J. Gregowicz, MD, FCAP  
H. David Greider, MD, FCAP  
David Gross

Kirsten Haake  
J. Cameron Hall, MD, FCAP  
Stanley G. Hall, MD, FCAP  
M. Elizabeth H. Hammond, MD, FCAP  
William F. Hancock, MD, FCAP  
Daniel J. Hanson, MD, FCAP  
Clarke T. Harding Jr., MD, FCAP  
Kathleen M. Harms, MD, FCAP  
Harold H. Harrison, MD, PhD, FCAP  
Richard J. Hausner, MD, FCAP  
Yvonne Hearn, MD, FCAP  
Janice J. Hessling, MD, PhD, FCAP  
William W. Hinchey, MD, FCAP  
Paul F. Hine, MD, FCAP  
Shannon W. Hoekstra  
Laura R. Hofmeister, MD, FCAP  
Janet O. Hon, MD, FCAP  
Gary L. Horowitz, MD, FCAP  
Richard E. Horowitz, MD, FCAP  
Alden L. Hostetter, MD, FCAP  
Jerry W. Hussong, MD, DDS, FCAP  
Kelli A. Hutchens, MD, FCAP  
Robert V. P. Hutter, MD  
Vera C. Hyman, MD, FCAP  
Grace N. Jackson, MD, FCAP  
Michael E. Jackson, MD, FCAP  
Eloisa B. Jahdi, MD, FCAP  
Joseph J. Jarzynka, MD, FCAP  
Barry M. Javadzadeh, MD, FCAP  
Ming Jiang, MD, FCAP  
Jonathan H. Johnson, MD, FCAP  
Walter D. Jones, MD, FCAP  
Randal C. Juengel, MD, FCAP  
Kathy Juliussen  
Kenneth H. Jurgens, MD, FCAP  
Elzbieta W. Jurka, MD, FCAP  
Bradley S. Karon, MD, PhD, FCAP  
Edward A. Kaufman, MD, FCAP  
Harvey W. Kaufman, MD, FCAP  
Karen L. Kaul, MD, PhD, FCAP  
James F. Keefe, MD, FCAP  
William J. Keenan, MD, FCAP  
Todd J. Kendall, MD, FCAP  
Lawrence C. Kenyon, MD, PhD, FCAP  
William F. Kern III, MD, FCAP  
Matthew M. Kershisnik, MD, FCAP  
Galen M. Kessler, MD, FCAP  
Charles R. Key, MD, FCAP  
Thaddeus Khachaturian, MD, FCAP  
Frederick L. Kiechle, MD, PhD, FCAP  
Paul B. Kilzer, MD, FCAP  
Lauren C. King, MD  
Kenneth M. Klein, MD, FCAP  
Walter M. Klein, MD, FCAP  
Douglas G. Knapman  
Lawrence L. Knight, MD, FCAP  
Carl T. Koenen, MD, FCAP  
Shane K. Kohl, MD, FCAP  
Nancy C. Kois, MD, FCAP  
Paul G. Koles, MD, FCAP  
Jessica A. Kozel, MD, FCAP

Laurel A. Krause, MD, FCAP  
Mary Katherine Krause  
Susan Krauser  
Megan K. Kressin, MD, FCAP  
Ned A. Kuivinen, MD, FCAP  
George F. Kwass, MD, FCAP  
Sioe T. Kwee-Yue, MD, FCAP  
Myla Lai-Goldman, MD, FCAP  
Ann F. Lamberty  
C. Darrell Lane, MD, FCAP  
Kathryn L. Lane, MD, FCAP  
John L. Langin Sr., MD, FCAP  
Patrick E. Lantz, MD  
Paul J. Lappinga, MD,  
Paula R. Larson, MD, FCAP  
Predrag M. Latkovich, MD, FCAP  
John E. Lawe, MD, FCAP  
Kang M. Lee, MD, FCAP  
Gordon B. LeGrand, MD, FCAP  
Debra G. Leonard, MD, PhD, FCAP  
Raymond L. Lesonsky, MD, FCAP  
Richard M. Levenson, MD, FCAP  
Nancy C. Li, MD, FCAP  
Ryan R. Lin, MD, FCAP  
Ramiro R. Lindado, MD, FCAP  
Michael and Samara A. Lingafelter  
Henry Y. Liu, MD, FCAP  
Jerome M. Loew, MD, FCAP  
Nora-Patrizia Loh, MD, FCAP  
Luisa A. Lorenzo, MD, FCAP  
Nancy A. Lowe  
Gary K. Ludwig, MD, FCAP  
William C. Luft, MD, FCAP  
Lincoln Luk Jr., MD, FCAP  
Stephen R. Lyle, MD, PhD, FCAP  
Lachlan Macleay Jr., MD, FCAP  
Thirumalai V. Madhavan, MD, FCAP  
Marlene L. Magrini-Greyson, MD, FCAP  
Neal R. Makens, MD, FCAP  
Joyce E. Maldonado, MD, FCAP  
Wilford E. Maldonado, MD, FCAP  
Houchidar C. Maneche, MD, FCAP  
Venk Mani, MD, FCAP  
William L. Manion, MD, JD, FCAP  
Charles F. Manning Jr., MD, FCAP  
Ciaran M. Mannion, MD, FCAP  
Elizabeth T. Martin, MD, FCAP  
Marikay and Jeffrey Martin  
Antonio E. Martinez, MD, FCAP  
Roger C. Mathewson, MD, FCAP  
Shrara McCue  
Michael D. McEachin, MD, MBA, FCAP  
Karen McIntosh, MD, FCAP  
Donald C. McKee, MD, FCAP  
David A. McKenzie, MD, FCAP  
Ronald W. McLawhon, MD, PhD, FCAP  
Roger E. McLendon, MD, FCAP  
Arthur H. McTighe, MD, FCAP  
Jeffrey R. Melnick, MD, PhD, FCAP  
Adalberto Mendoza, MD, FCAP  
Arturo E. Mendoza, MD, FCAP

Richard D. Michaelson Jr., MD, FCAP  
Martin C. Mihm Jr., MD, FCAP  
Cynthia N. Miller, MD, FCAP  
Douglas C. Miller, MD, PhD, FCAP  
Dylan V. Miller, MD, FCAP  
Elizabeth J. Miller, MD, FCAP  
Steve A. Miller, MD, PhD, FCAP  
Theodore R. Miller, MD, FCAP  
Richard D. Minehart  
Roberto Miranda, MD, FCAP  
Michael J. Misialek, MD, FCAP  
Daniel P. Molden, MD, FCAP  
Milka M. Montiel, MD, FCAP  
Federico A. Monzon, MD, FCAP  
Robin A. Moore, MD, FCAP  
Geoffrey H. Moyer, MD, PhD, FCAP  
Jonathan L. Myles, MD, FCAP  
Meenakshi A. Nandedkar, MD, FCAP  
Marcus B. Nashelsky, MD, FCAP  
Carlos C. Navarro, MD, FCAP  
Margaret H. Neal, MD, FCAP  
Jerry W. Nelson, MD, FCAP  
Diana L. Nevins, MD, FCAP  
Robert O. Newbury, MD, FCAP  
William P. Newman III, MD, FCAP  
Tu H. Nguyen, MD, FCAP  
Kent A. Nickell, MD, FCAP  
Stephen I. Noel, MD, PhD, FCAP  
James H. Norton Jr., MD, FCAP  
David A. Novis, MD, FCAP  
Jan A. Nowak, MD, PhD, FCAP  
John S. Oehrle, MD, FCAP  
Sarah J. Olenick, MD, PhD, FCAP  
Felix A. Olobatuyi, MD, FCAP  
Barbara A. O'Malley, MD, FCAP  
Rawhi A. Omar, MD, PhD, FCAP  
Patrick E. O'Reilly Jr., MD, FCAP  
James Orheim  
James E. Orr, MD, PhD, FCAP  
Steven F. O'Sheal, MD, FCAP  
Saula Ostrowsky  
Nola J. Palomino, MD, FCAP  
Milagros C. Paneda, MD, FCAP  
Linda J. Parapetti  
David M. Parham, MD, FCAP  
John F. Pederson, MD, FCAP  
Thomas C. Peoples, MD, FCAP  
Wayne E. Penka, MD, FCAP  
Regio T. Penna, MD, FCAP  
Peoria Tazewell Pathology Group, S.C.  
(Elizabeth A. Bauer-Marsh, MD, FCAP)  
Nat L. Pernick, MD, FCAP  
Peter L. Perrotta, MD, FCAP  
Donald R. Peven, MD, FCAP  
Abraham Philip, MD, FCAP  
Thuy Phung, MD, FCAP  
Volney E. Pierce Jr., MD, FCAP  
Anthony M. Pirrello Jr., MD, FCAP  
Martha B. Pitman, MD, FCAP  
Marvin S. Platt, MD, FCAP  
Richard J. Pollard, MD, FCAP

Suzanne Z. Powell, MD, FCAP  
Edward L. Proctor Jr., MD, FCAP  
Kathleen E. Puca, MD, FCAP  
Joseph R. Putrush, MD, FCAP  
Alam M. Qadri, MD, FCAP  
Melissa Rabinowitz  
Dini W. Rada, MD, FCAP  
Glenn E. Ramsey, MD, FCAP  
Julia Rankenburg  
Sourav Ray, MD, FCAP  
Nagarpu S. Reddy, MD, FCAP  
Nicholas E. Reiber, MD, FCAP  
Dennis D. Reinke, MD, FCAP  
Sarah Renz  
Telesforo G. Reyes Jr., MD, FCAP  
Mazhar Rishi, MD, FCAP  
Howard S. Robin, MD, FCAP  
Leeann M. Rock, MD, FCAP  
Diana R. Rogers, MD, FCAP  
Milton W. Roggenkamp, MD, FCAP  
Patricia R. Romano, MD, FCAP  
Karen F. Ross, MD  
Charles Roussel  
Stephen G. Ruby, MD, MBA, FCAP  
Thomas H. Rynalski, MD, FCAP  
Ahmed M. Saad, MD, PhD, FCAP  
Nirmal Saini, MD, FCAP  
Reisuke Saito, MD, FCAP  
Rajinder P. Sambhi, MD, FCAP  
Mary M. Sanders, MD, FCAP  
James B. Sawyer, MD, FCAP  
Daniel A. Scharifker, MD, FCAP  
Harold Z. Scheinman, MD, FCAP  
Joseph Schramm  
Dennis D. Schreffler, MD, FCAP  
Robert E. Schulz, MD, FCAP  
Arnold M. Schwartz, MD, PhD, FCAP  
Jack N. Sees Jr., MD, FCAP  
Mala Sengupta, MD, FCAP  
Deborah A. Sesok-Pizzini, MD, MBA, FCAP  
Gregory S. Severson, MD, FCAP  
Nelofar Q. Shafi, MD, FCAP  
Niranjan T. Shah, MD, FCAP  
Mohsen Shakerin, MD, FCAP  
E. Mei Shen, MD, FCAP  
Lee C. Sheppard Jr., MD, FCAP  
Vinod B. Shidham, MD  
Marie L. Shikany  
Gene P. Siegal, MD, PhD, FCAP  
Howard L. Siegel, MD, FCAP  
William C. Silberman, MD, FCAP  
Byron H. Simmons, MD, FCAP  
Scott Y. Sittler, MD, FCAP  
Gregory J. Skarulis, MD, FCAP  
James W. Smith, MD, FCAP  
Ronald P. Smith, MD, FCAP  
David R. Soike, MD, FCAP  
Kyo C. Song, MD, FCAP  
Donald H. Souillard, MD, FCAP  
Maria G. Sparacino, MD, FCAP  
Ronald P. Spark, MD, FCAP

Peter J. Stephens, MD, FCAP  
Jonathan S. Strauss, MD, FCAP  
Daniel G. Strum, MD, FCAP  
Charles D. Sturgis, MD, FCAP  
John M. Sundermann, MD, FCAP  
Stephenson S. Swamidoss, MD, FCAP  
Mary L. Swearingen, MD, FCAP  
James W. Swinehart, MD, FCAP  
Mark S. Synovec, MD, FCAP  
Jeno E. Szakacs, MD, FCAP  
William H. Talbot Jr., MD, FCAP  
Rosemary H. Tambouret, MD, FCAP  
Ali Tamsen, MD, FCAP  
Carmela D. Tan, MD, FCAP  
Johannes H. Tan, MD, FCAP  
Alice S. Tannenbaum, MD, FCAP  
Sheldon B. Taubman, MD, FCAP  
Fattaneh A. Tavassoli, MD, FCAP  
James R. Taylor, MD, FCAP  
William L. Thelmo, MD, FCAP  
B. Preston P. Thomas, MD, FCAP  
Lindsey C. Thomas, MD, FCAP  
Darlene C. Thorne, MD, FCAP  
Clifford H. Threlkeld Jr., DO, FCAP  
Russell H. Tomar, MD, FCAP  
Alan G. Torelli, MD, FCAP  
Gault H. Townsend, MD, FCAP  
J. Allan Tucker, MD, FCAP  
Deborah L. M. Turski, MD, FCAP  
Robert W. Tyson, MD, FCAP  
Angelina L. Valcos-Sarau, MD, FCAP  
Kristen M. Vandewalker, MD  
Francis J. Varga, MD, FCAP  
James R. Vasser, MD, FCAP  
Kanaka Durga S. Vege, MD, FCAP  
Stephen E. Vernon, MD, FCAP  
Glenn N. Wagner, DO, FCAP  
Jonathan R. Walburn, MD, FCAP  
Patricia G. Wasserman, MD, FCAP  
Caryl J. Webner, MD, FCAP  
Sally Weintraub  
Lionelle D. Wells, MD, FCAP  
Alice L. Werner, MD, FCAP  
Mr. and Mrs. Joe Wessell  
Robert L. West, MD, FCAP  
Philip J. Whelan, MD, FCAP  
Christa L. Whitney, MD, FCAP  
Michael L. Whitson, MD, FCAP  
Megan Wick  
David A. Wiese, MD, PhD, FCAP  
David C. Wilbur, MD, FCAP  
Jerome S. Wilkenfeld, MD, FCAP  
David S. Wilkinson, MD, PhD, FCAP  
Joseph H. Willman, MD, FCAP  
D. Douglas Wilson, MD, FCAP  
Nonda J. Wilson  
David L. Witte, MD, PhD, FCAP  
David H. Wolfe  
Jan E. Woods, MD, FCAP  
Joan E. Woodward, MD, FCAP  
Edward T. Wright III, MD, FCAP

Howard W. Wright III, MD, FCAP  
Y & Z Westwood Surgical  
Pathology Lab, Inc.  
(Azra O. Zarrinpar, MD, FCAP)  
David V. Yana, MD, FCAP  
Mariano G. Yogore III, MD, JD, FCAP  
Rebecca F. Yorke, MD, FCAP  
Maureen F. Zakowski, MD, FCAP  
Bruce C. Zangwill, MD, FCAP  
Eduardo Zappi, MD, FCAP

### Thoughtful Circle

Anonymous (2)  
Anwar S. Ahmad, MD, FCAP  
K.S. Ahmad  
Layla Alizadeh, MD  
Kathleen A. Allen, MD, FCAP  
James P. Almas, MD, FCAP  
AmazonSmiles  
Julie Anbinder  
Lynne Argyilan  
Javier L. Arias-Stella Jr., MD  
Jan Ashley  
Fady K. Baddoura, MD, FCAP  
Karen Balinski  
Evelyn R. Banks, MD, FCAP  
Lauren M. Baruch  
Carol Baumeister  
Joanne L. Becker, MD, FCAP  
Kathy P. Belgea, MD, FCAP  
Terese Bell  
Lilia G. Belov, MD, FCAP  
Kerry L. Bernal, MD, FCAP  
Pamela J. Bernard  
Daniel G. Berntson, MD, FCAP  
Cynthia Biasi  
David A. Birdwell, MD, FCAP  
Esther N. Bit-Ivan, DO, FCAP  
John N. Boger, MD, FCAP  
Henry M. Bowers, MD, FCAP  
Nora Bowers  
Natasha H. Brinker  
Richard C. Burgess, MD, FCAP  
Amy L. Burriss  
Alexander J. Byrne, MD, FCAP  
Corrine Cagney  
Julie C. Cantor-Weinberg  
James C. Carlson  
Debora Carlstrom  
Pramod K. Carpenter, MD, FCAP  
Lucas Centeno  
Susan W. Chaney  
Wei L. Chang, MD, FCAP  
Thomas Chanter  
Prem M. Chauhan, MD, FCAP  
Beth Anne Chmara  
Marcin Ciechanowski  
Deborah R. Citron, MD, FCAP  
Bettina E. Colling-Swanson  
Donald P. Connelly, MD, PhD, FCAP  
Scott D. Conners

Marian F. Cook  
Mark E. Costaldi, MD, FCAP  
Leona N. Council, MD, FCAP  
Michelle Coyle  
Elizabeth Cramer  
Jeffrey L. Craver, MD, FCAP  
David M. Crossland, MD  
Cherryl Crouch  
Lisa Culton, MD, FCAP  
Oscar W. Cummings, MD, FCAP  
Eric Czerwinnski  
Trudy Darden  
Stella DeAngelo  
Robert F. Debski II, MD, FCAP  
Diane Dial  
Mary L. Doherty  
Gail Donaldson, MD, FCAP  
John W. Doucette, MD, FCAP  
Charles D. Drummond Jr., MD, FCAP  
Bruce E. Dunn, MD, FCAP  
Patricia Eagle  
Asim Ejaz, MBBS, MD, FCAP  
Kelli A. Ellis  
Mary Ellison  
Francisco A. Elmudesi, MD, FCAP  
Stefan E. Epstein, MD, FCAP  
Jonathan S. Fain, MD, FCAP  
Stephanie S. Familiar  
Wilda D. Ferguson  
Marie N. Fidelia-Lambert, MD, FCAP  
Marcella F. Fierro, MD, FCAP  
Susan Fore  
Peter C. Fuchs, MD, PhD, FCAP  
Rebecca Fulcer  
Latha Gali  
Carolyn Gandy  
Kristin Garcia  
Ann M. Gazer  
Anne M. Gideon, MD, FCAP  
Kimberly A. Gilfillan  
James R. Gill, MD, FCAP  
Michael Giuliani  
Mark R. Glasberg, MD  
Armand B. Glassman, MD, FCAP  
Deborah B. Gordon, MD, FCAP  
Joel Graff  
John L. Graham, MD, FCAP  
Louis S. Graham Jr., MD, FCAP  
Patricia A. Gregg, MD, FCAP  
Donald G. Guinee, MD, FCAP  
Khairun Gutierrez  
Rosa M. Haiffe, MD, FCAP  
Carol A. Hajkaluk  
Kelly Hayes  
Nan V. Heard, MD, FCAP  
Richard P. Henke, MD, FCAP  
Robert W. Hertzog, MD, FCAP  
Mary Jane Hicks, MD, FCAP  
Janet Holmblad  
Carolyn D. Hoth  
Shan-Shan H. Hsu, MD, FCAP

Wei Huang, MD  
Michael P. Hubeny  
Richard J. Huehnergath, MD, FCAP  
Stanley D. Hurtt, MD, FCAP  
Mujtaba Husain, MD, FCAP  
Sean M. Hussey, MD, FCAP  
Thomas S. Hutsell, MD, FCAP  
Samy S. Iskandar, MBChB, PhD, FCAP  
Chester W. Jablonski, MD, FCAP  
Lisa B. Johnson  
Wendy A. Johnson  
Julian I. Joseph, MD, FCAP  
Vijay V. Joshi, MD, FCAP  
Mitra B. Kalelkar, MD, FCAP  
Steve A. Kargas, MD, PhD, FCAP  
Jill H. Kaufman  
Victoria Keller  
Nicholas Kelly  
Colleen Kendzior  
John F. Kennard, MD, FCAP  
Mary Kennedy  
Julia P. Kenny, MD, FCAP  
Richard D. Key, MD, FCAP  
Robert King  
Christopher J. Kligora, MD, FCAP  
Kathy T. Kline, MD, FCAP  
Carolyn Knapik  
Jennifer Knight  
Darlene M. Kokron  
Avina Kolareth, MD, FCAP  
Jeanine Kraft  
Jonathan S. Krauss, MD, FCAP  
Laura Kreid  
Kimberly Kruger  
Barbara Kung  
Adam Kuten, MD, FCAP  
Margaret La Joie  
Felicitas L. Lacbawan, MD, FCAP  
Marina Ladygin  
Rosa Lazzara  
Theresa Levinski  
Jenny Libien, MD, PhD, FCAP  
Martin L. Lipschultz, MD, FCAP  
Megan Lisek  
Edward E. Litkenhous, MD, FCAP  
Arthur J. Loerzel, MD, FCAP  
Eugene J. Low, MD, FCAP  
Donald J. MacPherson, MD, FCAP  
Winston B. Magno, MD, FCAP  
Arvid R. Magnuson, MD, FCAP  
Adrienne M. Malta  
Karen Manzella  
Julia A. Marando  
Wayne R. Markus, MD, FCAP  
Mary L. Marshall Sidorsky, MD, FCAP  
Josephine J. Marshallleck, MD, FCAP  
Anita R. Martin, MD, FCAP  
Padma R. Mathur, MD, FCAP  
Joan C. Mattson, MD, FCAP  
Mary Catherine McAdams  
Tari McDermand

Robert S. McGee Jr., MD, PhD, FCAP  
James L. McQuaid, MD, FCAP  
Matthew J. Medinger  
Sean Menick  
David Miksits, MD, FCAP  
David Mikutis  
Regina N. Mikutis  
Michelangelo A. Milano, MD, FCAP  
Frank P. Miller III, MD, FCAP  
Jeff Miller  
Alberto Millos, MD, FCAP  
William Mills  
Jose R. Montero, MD, FCAP  
Loretta Morrison  
Sidney S. Murphree, MD  
Morgan Murray  
Vicente Nadal, MD, FCAP  
Robert M. Najarian, MD  
Wesley Y. Naritoku, MD, PhD, FCAP  
Sonya Naryshkin, MD, FCAP  
Noreen Natale  
Christine Nawrot  
Hassan Nayer, MD, FCAP  
Joseph A. Neal, MD, FCAP  
V. Thery Ness, MD, FCAP  
Quyen Nguyen, MD, FCAP  
Robert W. Novak, MD, FCAP  
Patricia K. Novotny  
Betty K. Oetama, MD, FCAP  
Patricia Ogera, MD  
Andrew H. Oliff, MD, FCAP  
Pedro M. Ortiz-Colom, MD, FCAP  
Darryl E. Palmer-Toy, MD, PhD, FCAP  
Sonja Pappas  
John R. Parker, MD, FCAP  
Donald A. Parsons, MD, FCAP  
Akshay Patel  
Peter P. Patterson, MD, MBA, FCAP  
Champa Paul, MD, FCAP  
Barbara L. Pauwels  
Dianne Peterson  
Karen L. Peterson Theis  
Ljiljana Petkovic  
Margaret Pierog  
Peter V. Podluskus, MD, FCAP  
Ion Popa, MD  
Maria C. Porter, MD, FCAP  
Gene K. Potter, MD, PhD  
Peter Powers  
Jian-Hua Qiao, MD, FCAP  
Ernesto B. Quiachon, MD, FCAP  
Betty Quigley  
Arteso C. Raborar, MD, FCAP  
Artur Rangel-Filho, MD, PhD,  
Perry G. Rawson, MD, FCAP  
Rosemary A. Recavarren Asencios,  
MD, FCAP  
William O. Reid, MD, FCAP  
Sherrie L. Rice  
Nicole D. Riddle, MD, FCAP  
Drucilla J. Roberts, MD

Frank R. Rudy, MD, FCAP  
Ofelia S. Ruiz, MD, FCAP  
Paul A. Rusnack, MD, FCAP  
Tammy Rust  
David A. Ryndak  
Sudarshan Sahgal, MD, FCAP  
German Sanchez-Casis, MD, FCAP  
Glory A. Sandberg, MD, FCAP  
Osvaldo Santiago  
Stephen J. Sarewitz, MD, FCAP  
Ronald B. Satchell  
Michelle M. Scarpelli  
Conrad Schuerch, MD, FCAP  
Joan Schwartz  
Roxanne Schwoch  
Beverly J. Sesterhenn  
Hedyeh Shafi, MD  
Beth Shaz, MD, FCAP  
Shania Shuja, MD  
Nancy Sifuentes  
Joyce Simko  
Kim M. Sims  
Henry P. Singletary, MD, FCAP  
Tom Skukan  
Robert R. Sloss, MD, FCAP  
Elizabeth K. Smith  
Joseph I. Smith, MD, FCAP  
Randall S. Smith, MD, FCAP  
Samuel A. Smith, MD, FCAP  
Erica Smyth  
Gilbert B. Solitare, MD, FCAP  
Rhona Souers  
Simon Soumerai, MD, FCAP  
Dani F. Spanjer  
Samantha Spencer, MD  
Mary B. Spila  
Luther D. Stacy, MD, FCAP  
Timothy T. Stenzel, MD, FCAP  
Ilya Stone, MD, FCAP  
William H. Strange, MD, FCAP  
Megan Strok  
Becky A. Struck  
Bettina Swanson  
Tina M. Swanson  
Ryan Swinford  
Debbie Szczesniak  
Jeffrey J. Tarrand, MD, FCAP  
Laura M. Tascher  
Margaret Taylor  
Monique M. Terrell  
Gerry D. Thomas  
Mari G. Thomas, MT(ASCP)  
Lucilene F. Tolentino, MD, FCAP  
Christopher A. Tormey, MD, FCAP  
Takashi Toshimitsu, MD  
LoAnn Tran  
Henry Travers, MD, FCAP  
Lynne Uhl, MD, FCAP  
Nancy I. Ulanowicz, MD, FCAP  
Monique Van Berkum  
Kryder E. Van Buskirk III, MD, FCAP

Enrique VanSanten, MD, FCAP  
Craig E. VanUitert, MD, FCAP  
Girish Venkataram  
Kristina Vergara  
Harry V. Vinters, MD  
Laurie Vitek  
George R. Voulgarakis, MD, FCAP  
Nancy E. Warner, MD, FCAP  
Lori M. Wasson, DO, FCAP  
Victor W. Weedn, MD, JD, FCAP  
Qiang Wei, MD, PhD  
Elliot S. Weisenberg, MD, FCAP  
Tami Wennersten  
Sharon L. West  
Kelly E. Westfall  
Kenneth J. Wielgos  
Marie R. Williams  
Susan U. Williams  
Dwayne Wilson  
Fred M. Wlodarski, MD, FCAP  
Eleanore M. Wojewoda  
Loren J. Wolsh, MD, FCAP  
Roseann I. Wu, MD, MPH  
Nancy Yeransian

### **In-Kind Donations by Individuals**

Elizabeth Alenghat, MD, FCAP  
Padmalatha Chandrashekar, MD, FCAP  
Jon Conklin, MD, FCAP  
Bruce Davis, MD, FCAP  
John Fallon, MD, FCAP  
Richard Horowitz, MD, FCAP  
Rosamond Janis, MD, FCAP  
Areta Kowal-Vern, MD, FCAP  
Stanley Lipper, MD, FCAP  
Douglas Miller, MD, PhD, FCAP  
Dwight Oxley, MD, FCAP  
Gene Siegal, MD, FCAP  
Gang Wang

### **Corporate Donors**

#### **Corporate Donors \$10,000+**

Roche Diagnostics Corporation  
Ventana Medical Systems, Inc.

#### **Corporate Donors \$5,000–\$9,999**

Nikon, Inc.  
NTT Data

#### **Corporate Donors \$2,500–\$4,999**

Blue Cross Blue Shield of Illinois  
Enterprise Holdings Foundation

#### **Corporate Donors \$1,000–\$2,499**

Haematologic Technologies, Inc.  
Kellison & Company  
More Diagnostics, Inc.  
Quality Assurance Services  
Sysmex America, Inc.

### **Corporate Donors \$75–\$500**

Anonymous (2)  
Academy of Medicine, Singapore  
(Noel Adachi)  
AmazonSmiles  
The American Legion—People's  
Gas Post 336  
CAPTEL  
CL Graphics  
Dabbs, Hickman, Hill & Coleman, LLP  
Garvey's Office Products  
Sound/Video Impressions  
Reliance Graphics  
Tympani  
Women's Health Executive  
Network, Chicago  
(Maryrose Murphy)

### **In-Kind Donations**

American Cancer Society  
ARA Imaging  
Baylor College of Medicine  
Breast Cancer Research Centers of Texas  
Brown & Associates  
CCM Foundation  
Clinical Pathology Associates  
Clinical Pathology Laboratories- A Sonic  
Healthcare Company  
CooperSurgical  
DigitalScope  
Hennepin County Medical Center  
Hologic  
Houston Department of Health and  
Human Services  
Houston Methodist Hospital  
LabCorp  
Lifespan  
MD Anderson Cancer Center  
Media Directions Creative Group  
(Marvin Kogan)  
Minnesota Department of Health  
Nikon, Inc.  
Rhode Island Department of Health  
Susan's Rally  
The United Way  
UT Health  
Women & Infants

### **2015 Corporate Support**

BD  
CVS  
Hologic  
Quest Diagnostics  
Roche Diagnostics  
Ventana Medical Systems

**2014  
Donor  
Honor  
Roll**

## See, Test & Treat Host Sites

Center for Advanced Medicine, St. Louis, Missouri  
Comprehensive Cancer Center, Providence, Rhode Island  
Hope Clinic, Houston, Texas  
NorthPoint Health & Wellness Center, Minneapolis, Minnesota  
St. David's Medical Center, Austin, Texas  
Tufts Medical Center, Boston, Massachusetts  
Lone Star Family Health Center, Conroe, Texas

## Is your name missing?

If you think your name should be included in the CAP Foundation Honor Roll of Donors, and it is not, there is probably a logical explanation: We made a mistake. Although we take great care in compiling our list of donors, there is always the possibility of error. If we omitted your name or if your name is incorrect, please accept our apology and notify us of the mistake. This honor roll of donors lists gifts received between January 1, 2014, and January 15, 2015.

If you made a gift before or after those dates, your name will not be listed here. If you believe you made a gift, but you are not sure—we know it can be difficult to keep track of contributions—check your financial records or call our staff, and we will check ours.

If you forgot to send in a contribution last year, consider making a gift now to ensure your name is included in the 2015 CAP Foundation Honor Roll of Donors.

Questions? Please call the CAP Foundation at 800-323-4040 ext. 7846.





Design: Media Directions Creative Group  
mdcreativegroup.com

Photos by: Jill Barrett Photography

325 Waukegan Road  
Northfield, IL 60093-2750  
800.323.4040 ext. 7486  
CAPFdn@cap.org  
www.foundation.cap.org