



Open Lab establishment methodology and activities

CIVIS – a European Civic University

Erasmus+: European Universities

612648-EPP-1-2019-1-FR-EPPKA2-EUR-UNIV

The project has been funded with support from the European Union. This report reflects the view only of the author, and the Commission cannot be held responsible for any use, which may be made of the information contained therein.





Open Lab establishment methodology and activities

The following document summarizes the main activities carried out at the Open Lab network including the establishment of the different Open Labs and the methodology followed to launch local projects in response to the territorial needs. It also includes the consideration that the Open Lab coordinators have on the civic engagement identity of the projects for the selection and development. The participation of the University community has been a key factor to develop research and innovation programs from the two-flow communication with stakeholders, which enriched the scope and objectives under co-creation strategies. Design- and collective thinking have been also revealed as excellent driving forces for the progress of the network and projects, providing a transforming scenario for the way the university relates with its environment. The projects have been also a tool to deploy Service-Learning programs that connect education with the challenges of the local communities. The integration on territorial ecosystems and the mechanisms to enable the sustainability of the projects in a near future is also discussed. Finally, the document also reviews the experience of the first transnational initiatives put in practice in the network to face global challenges under joint actions.

The Open Lab teams in each institution have contributed equally to the preparation of this document, which is the result of a collaborative work to set a network that could be valuable for the objectives of the second phase of Civis. For that reason a critical analysis of the role of Open Labs in the context of European Alliances is also included after the three-year period.





1. Open Lab Methodology

The main task envisaged in CIVIS WP3 was the establishment of the Open Labs in the different territories to connect the innovation, research and education with the needs and challenges of the local stakeholders. The workpackage began with the establishment of the UAM Open Lab at the end of Month 5, which derived in the preparation of a formal methodology document of reference for the rest of Open Labs from the lessons learned (Fig. 1). Soon after the UAM Open Lab, the pandemic led to the general lock-down, provoking the adaptation of most of the activities to the on-line format for the next months. That situation slightly delayed the kick-off of the other Open Labs because of the difficulties to engage with the stakeholders in a difficult context, which extended the period of implementation until December 2020.

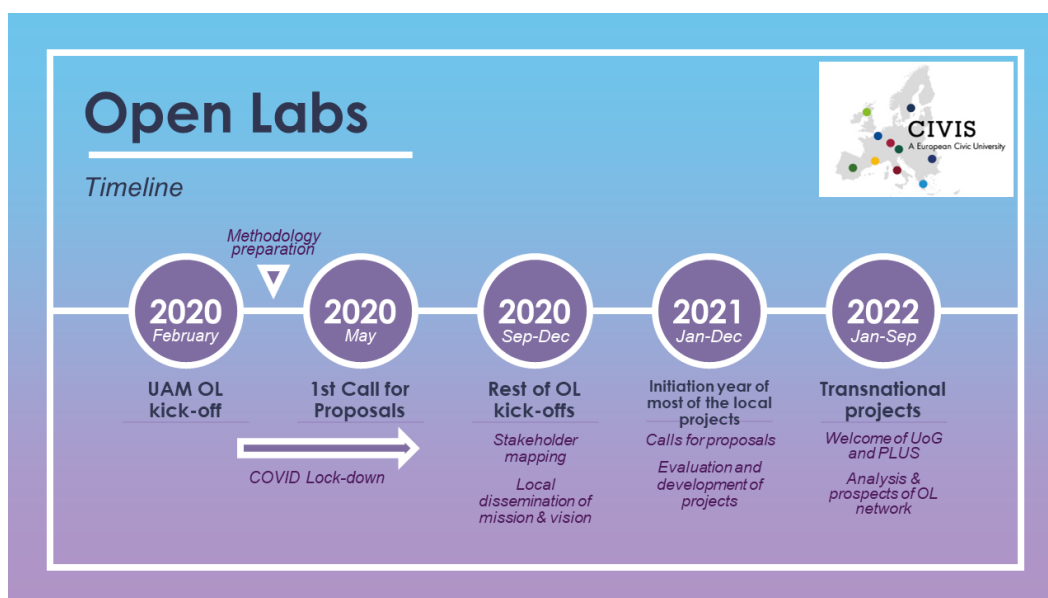


Figure 1. Timeline of the Open Lab network progress

The establishment process has been slightly different according to the dissimilarities of the territories and the preliminary experience and structures that resembled the Open Lab before the CIVIS project started. For instance, the nature and composition of the different Open Labs may differ throughout the network. Some of them are part of the University core and may coexist with other types of Living Labs at the University, whereas others are fairly independent units that operate under the supervision of the University and include a particular budget and staff beyond Civis. There are also small differences in the way the Open Lab operates. Some of them have a physical and recognizable space to develop the mission of the Open Lab, whereas others are more delocalized structures that organize activities and events in different sites inside and outside the Campus, aiming at attracting the interest of the University community from different areas of knowledge and the local citizenship within their own environment.





Common features of the Open Labs for the local implementation has been the official establishment of the Open Lab through a kick-off event (366 attendees to the different events) and the organization of meetings with the stakeholders to analyze territorial problems around the five Civis challenges. From those meetings, they have opened opportunities for the incubation of projects in response to those challenges involving the participation of external entities and university members (students, academics and staff). The Open Labs have also promoted the participation of the students and academics in the development of activities, fostering civic engagement inside the institution as well as the acquisition of transversal skills among student practices.

1.1. Stakeholders mapping

The stakeholder was coined for the first time by R. Edward Freeman in 1984 and refers to groups of interest that are important elements for a business venture and must be taken into account in the strategic plan. In the Civis context, the purpose of the mapping was to identify partners that can be impacted by the Open Lab objectives and be essential for the development of projects.

The purpose of the mapping was aiming at building a permanent vivid roundtable where the different stakeholders work together on finding innovative solutions through interdisciplinary joint actions. The roundtable should enable the dialog and the share of knowledge and intellectual input with local communities across the Civis territories. To preserve the academic character of the Lab, the University is a necessary partner in the relationships with the stakeholders.

The different stakeholders can be classified in larger groups that provide the landscape for the development of the Lab. A image of the ecosystem emerged is sketched in Figure 2. More interestingly, the Open Lab may form part of other territorial ecosystems and participate in other networks which creates a supra-level framework for its operations.

The composition of the stakeholder map vary along time and may update the entities in each group on a regular basis. For the sake of simplicity of the stakeholder map of the network, NGOs, Schools and entities of the Civil sector were included under the term "Society". The distribution of stakeholders in the network can be found in Figure 3 along with the map of each individual Open Lab (Table I).



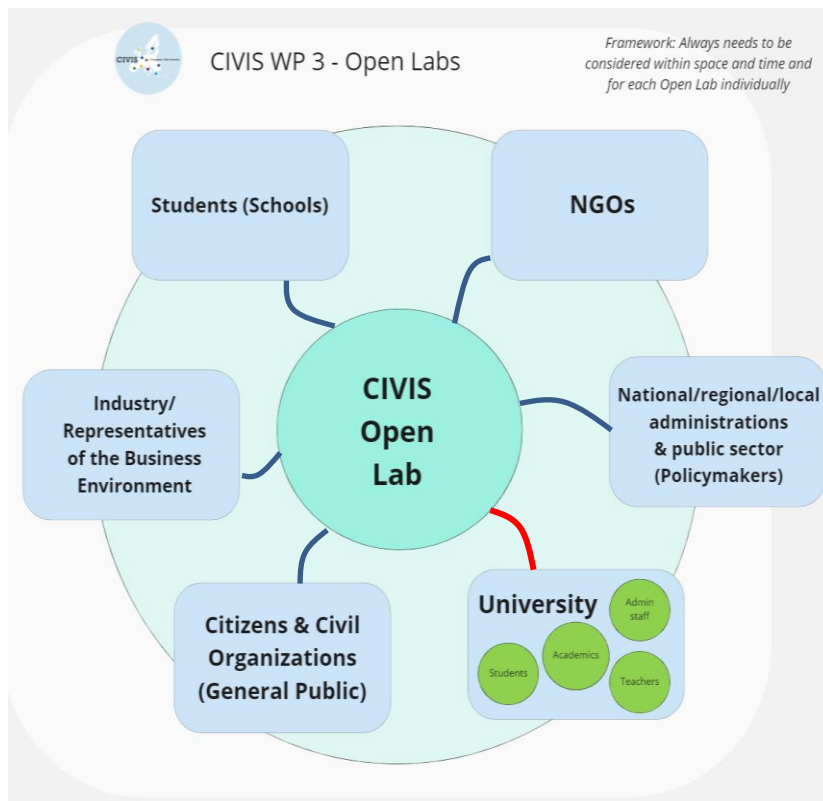


Figure 2. Civis Open Lab ecosystem

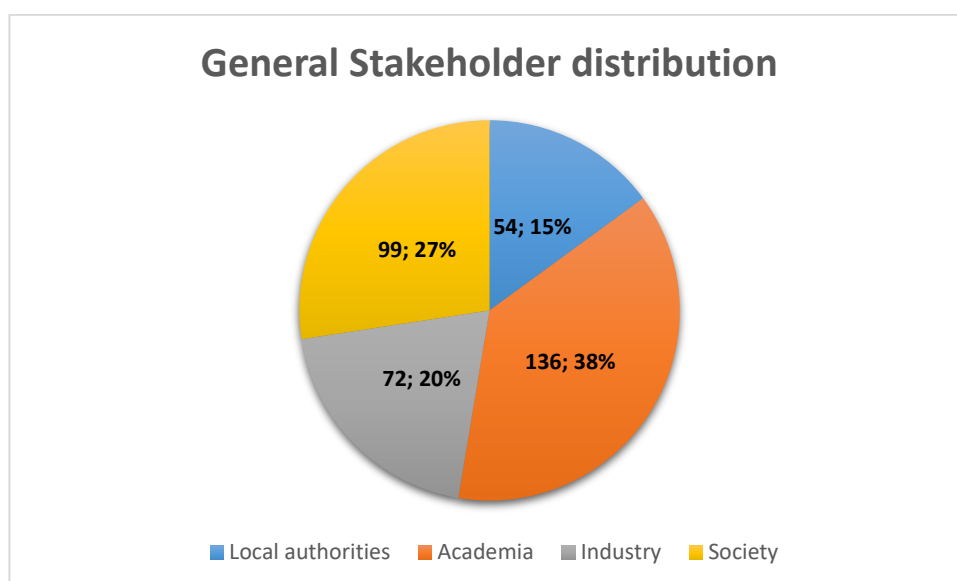


Figure 3. Stakeholder distribution in the network. Note: figures refer to entities, not individuals.





	Local authorities	Academia	Industry	Society	
NKUA	11	9	2	20	42
ULB	9	54	10	25	98
UB	3	19	22	8	52
UAM	11	16	13	20	60
AMU	8	13	2	11	34
SUR	6	7	6	5	24
SU	2	4	2	1	9
TU	4	14	15	9	42
TOTAL	54	136	72	99	361

Table I. Classification of stakeholders linked to the different Open Labs

To reinforce the territorial context and contribute to the objective of the respective regions' Smart Specialisation Strategies, the Open Labs included local and regional authorities and local/regional branches of national authorities. Table II includes a selection of partnerships of this kind in each University.

Open Lab	Selection of Local authorities
NKUA	<ul style="list-style-type: none"> • Municipality of Athens • Institute of Commerce and Services of Greek Confederation of Commerce and Entrepreneurship • 3rd Regional Centre for Educational Planning (Prefecture of Attika) • Directorate of Primary Education A Division of Athens • Directorate of Secondary Education of Cyclades • Directorate of Secondary Education of Western Attika • Hellenic Parliament Foundation • Municipality of Sikyon • Central Association of Municipalities in Greece
ULB	<ul style="list-style-type: none"> • Bruxelles Environnement (regional agency for environment and energy) • Innoviris (regional agency for research and innovation) • Société du Logement de la Région de Bruxelles-Capitale • Commune de Watermael-Boitsfort • Commune de Schaerbeek • AFSCA (belgian agency for food safety)
UB	<ul style="list-style-type: none"> • Ilfov County Resource and Educational Assistance Center • European Institute in Romania • Romania's National Commission for UNESCO
UAM	<ul style="list-style-type: none"> • Regional Ministry of Science, Universities and Innovation





	<ul style="list-style-type: none"> Regional Ministry of Social Policy and Family Madrid City Council Tres Cantos City Council Soto del Real City Council San Sebastián de Los Reyes City Council Boalo-Cerceda-Matalpino City Council Alcobendas City Council Colmenar Viejo City Council Miraflores de la Sierra City Council Hoyo de Manzanares City Council
AMU	<ul style="list-style-type: none"> Aix Marseille Provence Metropolis Rectorat Aix Marseille French Health Insurance Marseille City Council Region SUD Ministry of Education Metropolitan Chamber of Commerce and Industry of Aix Marseille Provence (CCIAMP)
SUR	<ul style="list-style-type: none"> Regione Lazio Spazio Attivo regione Lazio Parco Nazionale del Circeo Parco Archeologico Colosseo Soprintendenza Archeologica Comunale ASL Roma 3
SU	<ul style="list-style-type: none"> City of Stockholm (Founding partner) Stockholm Region (Founding partner)
TU	<ul style="list-style-type: none"> City of Mössingen District Office Tübingen Integration Council Reutlingen Ministerium für Soziales und Integration
UoG	<ul style="list-style-type: none"> Unesco Chair in Refugee Integration through Languages and the Arts (RILA) GRAMNET

Table II. Selection of most representatives regional/local administrations involved in the Open Labs

1.2. Calls for Proposals

Most of the labs opened opportunities for preparing and launching new projects through Calls for Proposals. These Calls were mainly addressed to the stakeholders under a specific scope of action derived from preliminary discussion on the local challenges, and included the following information:

- objectives of the Call (scope of action);
- total available budget;
- deadline for proposal submission;





- (d) application documents, including contact information of the applicants, plan of activities and project budget;
- (e) eligible costs for Seed Funding;
- (f) the expected deadline for the execution of projects;
- (g) selection criteria;
- (h) approval/denial communication date ;

The grants consisted of a seed-funding amount between 1.000 and 5.000 € per project to cover the first costs and its use was limited to the aims of the Open Lab as a tool towards the consolidation of an engaged University. Typical duration of the projects was from 6 months to 18 years, depending on the nature of the goals and the number of activities planned.

Costs will be considered eligible if they follow national cost spending legislation specific to higher education and if they follow the internal procedure of the university. Additionally, eligible costs actually incurred by the project team shall meet the following criteria:

- 1) they are exclusive to CIVIS
- 2) they are incurred during the duration of the project;
- 3) they are necessary for the implementation of the action;
- 4) they are identifiable and verifiable, in particular being recorded in the accounting records of the local OL officers and determined according to the applicable accounting standards of the country where the beneficiary is established and according to the usual cost accounting practices of the host University;
- 5) they comply with the requirements of applicable tax and social legislation;
- 6) they are reasonable, justified, and comply with the principle of sound financial management, in particular regarding economy and efficiency, defined as follows:
 - Economic principle. Resources employed at implementing their activities are provided punctually and in the appropriate quantity and quality, and at the best price.
 - Efficiency principle. Best ratio between the results achieved and the resources employed.
- 7) they do not surpass the amount awarded as a result of the evaluation process;
- 8) they are not part of long distance travel costs to keep the local character of the projects.¹

¹ Not applicable to the Transnational initiatives.





CALL FOR PROPOSALS TIMELINE

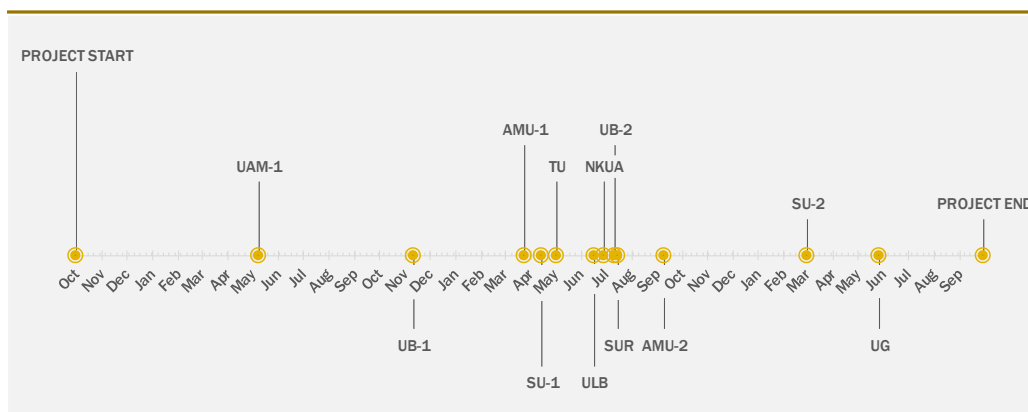


Figure 5. Timeline of the Call for Proposals during the three-year period. Some of the Open Labs launched two Calls (labelled as 1 and 2 in the graph) splitting the total budget in two parts, and some others preferred launching a single Call.

1.3. Financial Management of the projects

From the financial viewpoint, the first steps of the project deployment in the Open Labs were based in a regular follow-up of the costs linked to common research projects. Thus, each cost needed to be accepted as eligible by the local OL officers before payment. Thus, to pay the provider, the Project Applicant should submit

1. a legal invoice including the supplier information.
2. a supporting document for payment request (see an example in [Annex I](#)) addressed to the local OL officers, in which the Project Applicant (a) justifies the need of the expenditure for the global implementation of the OL project and (b) certifies their conformity with the services or goods received.

After having checked the supporting document, verified the existence of credit in the Seed Funding budget of the project, and the terms according to which payment is due, the authorizing officer validated the payment of the expenditure.

This protocol was adopted to ensure that the Seed Funding complied with the General principles of transparency and sound financial management. However, the time and effort required to implement it for each expenditure may sometimes jeopardize the progress of the projects. For that reason, other models might be adopted based on lump-sum management, which could simplify the paperwork and reduce the delay of payment.

1.4. Project Summary

In the original proposal, the WP budget allocated 80.000 € for the incubation of local educational, research and/or innovative projects. During the first meeting of the Open Lab TF held in Madrid in Feb 2020, the TF members agreed to split the budget evenly among the 8 Open Labs. Later on, the





reallocation of the budget of mobilities unrealized during the pandemic lockdown allowed the Open Labs to launch additional territorial projects and the opening of a transnational initiative on migration and civic engagement as discussed in Section 2.

Forty-one local projects were finally launched with an average seed funding of 3.442 €/project. The number of projects in each Open Lab can be found in Figure 6. UoG also launched 10 more projects by the end of the 1st CIVIS phase with a seed funding of 2.000 GBP each. Figure 7 shows the distribution of the projects for the different CIVIS Challenges. Is it important to notice that some of the projects may cover more than one challenge.

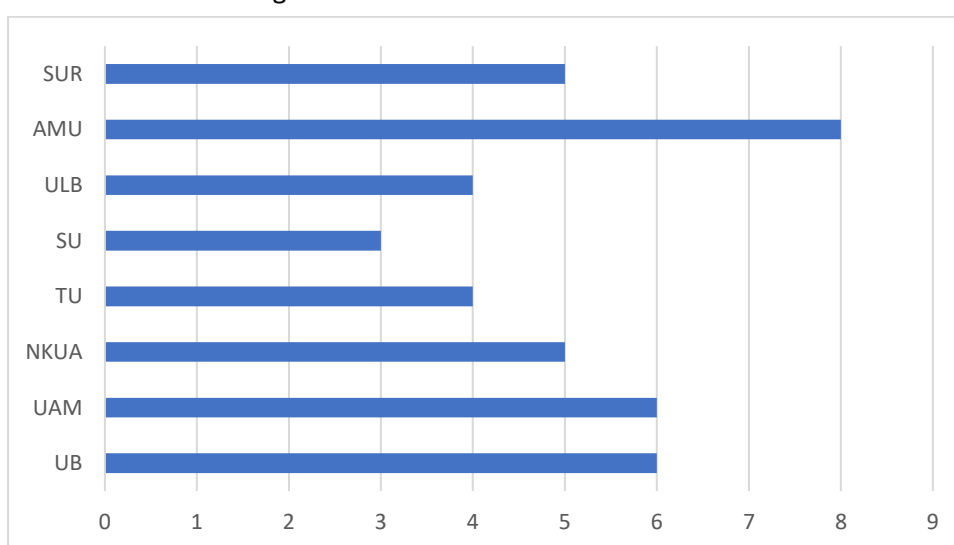


Figure 6. Number of projects launched in each Open Lab

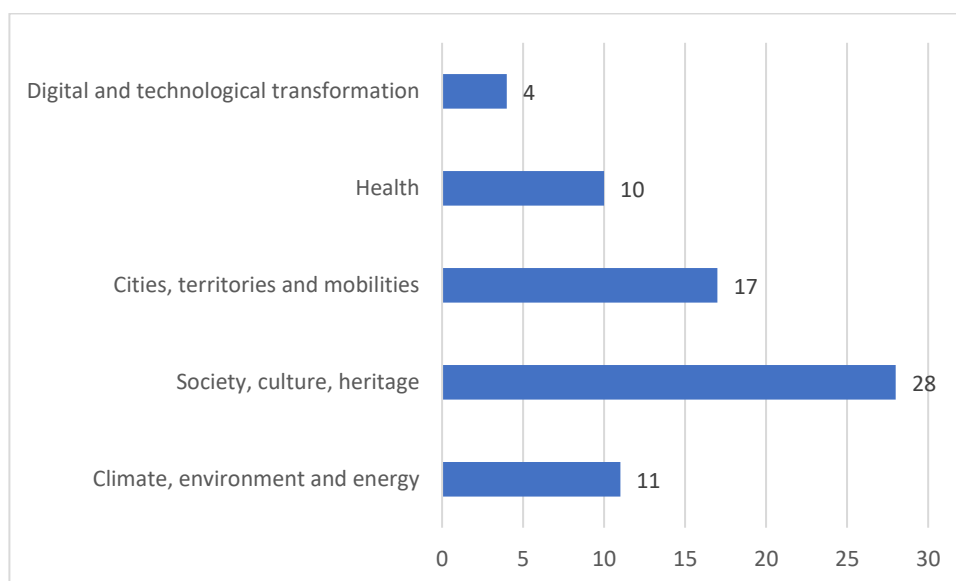


Figure 7. Number of projects for each CIVIS challenge





Some of the projects received additional funding beyond CIVIS. For instance, one of the projects launched in Madrid OL received financing from an Association of Social Services from Municipalities at Guadarrama Mountains of Northern Madrid inside an internal UAM program for innovation promotion. Sapienza University of Rome also cofinance their projects from external sources and University of Bucharest declared expenses in their projects well beyond the seed-funding budget, which were covered by additional resources.

For an exhaustive list of projects and contact people in each lab, please check out Annex II.

1.5. Dissemination

In its mission of creating open spaces to share knowledge, experience, commitment and intellectual stimulation with local society, the open labs generated a broad set of actions to raise local awareness on CIVIS challenges and encourage a sense of belonging among the local communities. The actions took place under the supervision of WP9 and they were useful to effectively communicate the opportunities given by the Open Labs to renew the relationship of the University with its territory and set up mechanisms towards the implementation of practical solutions to the local challenges.

The dissemination map included in Annex III summarizes the actions and the communication channels used for dissemination purposes. The actions can be categorized in four classes:

1. Open Lab kick-off events
2. Calls for Projects
3. Global and Local Civis Days
4. Project activities

Additionally, a specific webinar on Service Learning addressed to the Civis community and Open Lab stakeholders was also organized to introduce the conceptual basis of Service Learning as well as the key aspects for the design of Service-Learning programs. The role of students and the pathways to achieve academic recognition was also reviewed to facilitate the development of programs within the Open Lab projects and beyond.

2. Transnational Initiatives

Towards the last year of the project, the Open Lab Task Force started the implementation of particular projects that could provide visibility and raise awareness in the different territories about common European challenges, giving European significance to the works of our institutions and enabling the inter-territorial transmission of knowledge during the realization of the activities. With the help of the Civic Engagement Task Force and the publication of the Civic Engagement Handbook, the Open Lab tested this form of collaboration to intensify transversal partnership among local entities and academics on global issues enrooted in the civic identity of the Alliance.

By this means, the network also found a way to emphasize the singularity of the approach in comparison with other Open Lab structures beyond the European University context, while keeping the open, inclusive and participatory character of the initiatives.





The following projects were initiated with that purpose:

- A. **Migration and Civic Engagement.** The project aimed at opening spaces for dialog in each University that specifically addressed the challenges of migrants and refugees in the different regions. Each institution organized activities (workshops, roundtables, ...) planned to give voice to the migrant community, as well as to identify potential lines of research and work between academics and external experts in the field. This approach contributed to the preparation of a bunch of dissemination materials in a short period of time and allow to strengthen the areas of support for those vulnerable groups.

The project includes four different axes of action:

DIAGNOSTIC. Explore transversal topics of population displacement, access to social essential public services (education, health care...).

AWARENESS. Share stories and performing practices (through Art, History and Activism) to raise public awareness about migration and integration.

ACTION. Document and disseminate a collective instrument to engage students into helping migrants.

REPORTING. The final report is one of the deliverables of the WP and it is available at CIVIS box.

The project agglutinates all the Open Labs in the network, including also important contributions from University of Glasgow and University of Salzburg.

- B. **NaturaShare.** Under leadership of the Brussels Open Lab, this project has been one of the dissemination actions of WP9 and it forms part of the deliverables of that workpackage. The project has counted with the collaboration of the Open Lab network for its realization.

The project tries to study the situation of local agricultural production in our cities. Some of this agricultural production is professional market gardening, but collectively managed and citizen-maintained vegetable gardens also play a major role in urban agriculture. One of the advantages of this type of production is that it shortens supply chains and supports greater food independence. In addition, biodiversity in cities is crucial for all of us, offering benefits in terms of pollination, heat management, and recreational & cultural activities. The project is participatory and open to all: city residents, vegetable gardeners, naturalists, families, students, teachers, and researchers. Using the open source digital platform iNaturalist, anyone can share the species (fauna and flora) in her local garden and label the species according to her knowledge. Thus, NaturaShare is a Citizen Science activity where the aim is to involve the





public in scientific research and thus bring together science and society as a whole in an impactful way.

3. General Analysis and Prospects

Visibility & Awareness: Communication & Dissemination

Emphasis during the first phase has been done on the local communication trying to connect the University with their territories through the local Open Labs. The Open Labs should be by now recognized structures in the regions. In Civis 2.0, promoting and awareness raising on **what we do as a network, how we work**, as well as on **impact achieved**, should be now considered an important priority to both arouse interest, and to call for renewed involvement and participation of our ecosystems (from stakeholders to public administrations and policy makers).

Look for the differentiating factor in comparison to other similar structures/initiatives:

Considering the above, obtaining interest has much to do with a differentiating positioning compared to similar initiatives. We are all aware that the Open Lab format is not new. There are similar existing structures, even within other European alliances, and we should work on a model that differentiates us.

We need to look for singularity in this aspect and achieve a unique 'CIVIS model' that truly ADDS VALUE. Some KEYS could be:

1. **Developing our civic identity.** Our Open Lab must be unequivocally CIVIC. We must continue emphasising the OPEN, INCLUSIVE & PARTICIPATORY character of the Open Lab.
 - *Contribute to really change the mindset on the university as totally disconnected from society.*
 - *Improve the social mobility.*
 - *Adopt participatory approaches to make sure the community and stakeholders have ownership of the interventions.*
2. **Review and strengthen our local strategy.** We need to work for a **greater interaction in our ecosystems**. A possible first step would be to analyse what tools/instruments we already have, that we have not yet used and that could help us generate an OL's community inside and outside the university, such as:
 - *Our Local Consultative Councils, (now that they are all established) by reinforcing their role.*
 - *Our stakeholders' participant in projects, maybe by creating the figure of OL ambassador/s (open labbers).*
 - *Including students in our local OL teams, to help us engage their peers in the OL.*
3. **Start working more at the European Level.** After the projects showcase, one of the most repeated word has been SYNERGIES, and most valued aspect has been INTERACTION &





EXCHANGE. Interaction and exchange have been mentioned at the local level as well (between different stakeholders, between university and society...), but the opportunities that the Network can provide for both sharing, learning, and impacting, has been one of the most highlighted themes:

- *Surprised to see other territories solutions to same challenges.*
- *the natural shift from a local solution to a global one, or*
- *how diversity of approaches, can lead to projects with larger impact.*

If we want to really impact, contribute to making CIVIS an instrument of social change across Europe, we need to start developing our Network capacities. Also, and considering we are present in (*only*) 10 territories, for a larger or a real Europe's transformation, collaboration with other open labs, living labs, specialised in thematic subareas, could be also interesting to study, to reach even further, as well to providing a plus/added value, compared to other similar structures.

A physical location (locally):

A recognizable physical space to develop activities (meetings, workshops, round tables, public presentations & promotional events -launch of projects, projects results...) linked to the Open Lab could be interesting to have a local reference where the co-creation processes could take place with face-to-face interaction. Alternatively, shared spaces established at non-profit organizations or third places could also play an optimal role according to the experience of the 1st CIVIS phase. To manage & coordinate Lab's activities, a facilitator team could also be considered.

A digital space (at the Network level):

CIVIS proposal included a collaborative platform for Open Labs & Hubs. After an initial pilot test with an external provider, it is concluded that the design of a fully-functional multilingual platform for all Open Labs would require a large amount of resources with an unclear added value over other communication channels of the participating Universities (social networks, focus groups, local consultative councils,...).

However, as the number of projects grow, a revision of the format for the digital exhibition of projects might be useful to apply filters on territories, CIVIS challenges or keywords.

A transversal strategy within CIVIS:

The Open Labs has been a tool developed according to the WP3 objectives with the aim of providing local engagement and territorial impact. However, the linkage with other initiatives should be reinforced in the second part to better exploit the advantages of this bond with the territory in other dimensions beyond the development of seed-funded projects.

Examples of new links to other CIVIS Initiatives could be:

- Mobility programs.
- Collaboration with African partners to develop OL structures connected to the African territories.





- Collaboration with hubs in studies design through learning-by-doing approaches derived from local demands (services learning, external internships, chairs, lifelong learning, ...).

A shared Fundraising Strategy:

The projects developed at the Open Lab are part of the civic engagement strategy of the Alliance and they typically have a strong social impact in the local communities. Their sustainability depends on the continuity of funding for an actual transformation of the situation in those communities in the long term. Thus, the connection with other sources of funding is essential and can determine the survival of the model. Fundraising strategy should be a primary goal that gave the Open Labs the opportunity to achieve larger outputs.

The collaborative implementation of projects with the private sector, the public administrations and third sector entities through financial involvement of those partners could help to intensify their role as co-creators and strengthen their involvement.

Impact Evaluation Review:

In the first period of CIVIS, the indicators were defined to assess the achievement of the first steps towards the integration of the Open Lab structures into the different universities. Thus, most of them has to do with the number of meetings held by the Open Labs, the number of projects launched, the number of stakeholders, academics or students involved, and so on. In the second part of CIVIS, the indicators should focus more on the territorial impact and how the communities and citizens perceive the actions deployed by the Open Labs. That drift should be useful to get a proper feedback of the Open Lab activities and readjust the plans according to their meaning.



ANNEX I
Supporting document for payment request

PROJECT INFORMATION

Project Title:
Call Reference:
Project Applicant:
Telephone:
Email:

EXPENSE REPORT

Description of service or good, and its need for the implementation of the action: <i>*it is possible to group several expenses under the same request form in case the supplier is the same for all the expenses.</i>		
Total cost (in spelling out numbers):	(in numerals):	Invoice Expedition Date:
Name of Supplier:		
VAT Nr:		
Project Applicant Signature: _____		

CERTIFICATE OF CONFORMITY

Mr./Mrs.:
CERTIFIES that the services or products referred to in the invoice number <u> </u>
for an amount of <u> </u>
have been carried out or received in accordance to the principle of sound financial management, in particular regarding economy and efficiency.
Place, date and signature: <u> </u>

The Project Applicant should present this document through the means determined by local OL officers along with an original copy of the invoice.

ANNEX II: LIST OF LOCAL PROJECTS

Open Lab	Project Title	Short Summary	Project Coordinator	CIVIS Challenge
UB	<p>People and Trees: Baneasa Forest management solutions for sustainable urban development and resilience</p>	<p>People and Trees will support a multi- and transdisciplinary research project involving both natural systems socio-economic actors involved in the development and implementation of environmental policy and urban planning. We aim to develop and substantiate a series of management measures to promote sustainability, ecosystem services and the well-being of communities in the urban environment.</p> <p>The project is based on the involvement of 4 partners, with expertise in characterizing the biophysical structure of natural systems and the services provided by them, in urban planning and development and in biodiversity conservation.</p>	<p>Dan Barbulescu <i>Asociatia Parcul Natural Vacaresti</i> Dan@parcnaturalvacaresti.ro</p>	<p>Climate, environment and energy</p> <p>Society, culture, heritage</p> <p>Cities, territories and mobilities</p>
	<p>Services for Accessibility of Learning Contents and Educational Support for Children/Young People from Vulnerable Groups</p>	<p>This project aims to create a support system for identified children/young people from vulnerable groups, by establishing a Learning Content Accessibility Center equipped both for young people with disabilities and other resources necessary for learning support. The Center will serve as a base and practice center for volunteer students and others, creating a coherent and consolidated support system at the community level for children/young people from vulnerable groups.</p>	<p>Marilena Bratu <i>University of Bucharest</i> marilena.bratu@fpse.unibuc.ro</p>	<p>Society, culture, heritage</p>
	<p>Science for Resilience. Research for local sustainable development</p>	<p>The context of the project is represented by the UNESCO International Geopark Țara Hațegului - a development territory created and managed by the University of Bucharest, together with local partners. Specialists and students in at least six different fields will carry out multidisciplinary scientific research in the Geopark, involving children and young people from the local community.</p>	<p>Lucian Petrescu <i>Geomedia Center - University of Bucharest</i> Contact: Alexandru Andrașanu alexandru.andrasanu@unibuc.ro</p>	<p>Climate, environment and energy</p> <p>Society, culture, heritage</p>
	<p>Science for All</p>	<p>The "Science for All" project aimed to promote science communication for the general public, carrying on the FameLab Romania competition, previously organised by the British Council. The "Science for All" project was open to students pursuing undergraduate, master's or doctoral programs at Romanian universities or abroad, as well as researchers, university teachers, pre-university teaching staff and other categories of specialists working in educational and research institutions, along with other organisations that have scientific and/or technological profiles in Romania.</p>	<p>Andreea Stroica <i>British Council</i> andreea.stroica@britishcouncil.ro</p>	<p>Society, culture, heritage</p>
	<p>Travelling Laboratory</p>	<p>Students from different Schools travelled to the University of Bucharest where they participated to a tour of the faculties involved in the project in order to attend courses and lectures for informational-instructive-educational purposes. They also participated in experimental workshops.</p>	<p>Irina Zarafu <i>University of Bucharest</i> irina.zarafu@chimie.unibuc.ro</p>	<p>Society, culture, heritage</p>

ANNEX II: LIST OF LOCAL PROJECTS

		The students also travelled to Bucharest, where, guided by UB students, visited Grigore Antipa National Museum, Dimitrie Brandza Botanical Garden Museum, in order to educate in the direction of increasing interest in science and appreciation of authenticity, tradition and local and national values.		
	Urban lakes microscouts. Identification and quantification of microplastics in urban aquatic systems for sustainable development.	The project aims at identifying the presence in time and space of microplastics in the sediments and the water of the five aquatic systems studied. After experimental analysis of different aquatic systems, dissemination of scientific results among the local communities took place by organizing a day of public information and social responsibility of citizens (in the park where lake Circului is positioned). A manuscript of a scientific article is in preparation to share the experience beyond the Open Lab.	Enache Ioana <i>University of Bucharest</i>	Climate, environment and energy Society, culture, heritage Health Cities, territories and mobilities
UAM	Circular cities: shaping our urban future through circular economy	In order to tackle circular economy in cities, the project proposes an action plan to improve the recycling of household waste management, its recovery and the sustainable use of resources. Among other activities, the project includes a diagnostic study to evaluate the current degree of circularity measures implementation and a research on selective waste collection models and sustainable management in order to work with cities and improve their visibility on how waste is being managed, as well as to raise awareness on the importance of recycling among the population.	Mar Alonso Almeida <i>Universidad Autónoma de Madrid</i> mar.alonso@uam.es	Climate, environment and energy
	Forum for Sustainable Mobility	With the Climate Change and Energy Transition Act drafted by the Spanish Government and the measures required in terms of urban mobility for the progressive reduction of CO2 emissions, the project team proposes the creation of a common space where the cities of the northern area of Madrid can meet and share experiences and good practices in sustainable mobility. This project contributes to facilitate the adaptation process where urban, interurban and inclusive mobility are addressed, as well as mobility between UAM's campus and the municipalities of the northern area of Madrid.	Raúl Sánchez Aguilar <i>Universidad Autónoma de Madrid</i> raul.sanchezaguiar@estudiante.uam.es	Cities, territories and mobilities
	Service-Learning as University's response to COVID-19	As part of CIVIS's social commitment, this project sought to address new and urgent needs raised by the current pandemic through service-learning as a tool for facing and overcoming this common threat. Consequently, students from different UAM faculties together with academic mentors and expert professionals provided community service as part of their professional, personal and civic training. They also responded to the needs for psycho-educational support for families, teachers and students at all pre-university educational levels, as well as legal advice to disadvantaged groups and social entities.	Pilar Aramburuzabala <i>Universidad Autónoma de Madrid</i> pilar.aramburuzabala@uam.es	Digital and technological Transformation Society, culture and heritage

ANNEX II: LIST OF LOCAL PROJECTS

	<p>Evaluation of the impact of accompaniment programs on feelings of loneliness and well-being of older people</p>	<p>The overall objective of the project is the evaluation of the impact of accompaniment programs to promote the integration and social participation of the elderly and to reduce feelings of unwanted loneliness in this phase of life. More specifically, it is proposed: a) to investigate the benefits on the well-being as a result of active and affective accompaniment actions developed within the framework of volunteer programs and b) to describe the process of execution of the accompaniment programs.</p>	<p>María Izal <i>Universidad Autónoma de Madrid</i> maria.izal@uam.es</p>	<p>Health Society, culture and heritage</p>
	<p>Analysis of Local and Interurban Mobility in the municipalities of the Guadarrama Mountains</p>	<p>The project seeks to develop an overview of the problems related to the mobility in the Guadarrama Mountains and its municipalities, by the hand of the Citizen Observatory for the Conservation of the Heritage of the Guadarrama Mountains and the Forum of Sustainable and Inclusive Mobility, in which different external entities connected to the territory participate. The recent demographic growth and urban development of some municipalities requires the adoption of new forms of mobility that preserve the natural environment, while allowing efficient access to different activities and social functions.</p>	<p>Juan Ignacio Sánchez <i>Universidad Autónoma de Madrid</i> juanignacio.sanchez@uam.es</p>	<p>Cities, territories and mobilities</p>
	<p>Heritage for all: citizen participation and social innovation.</p>	<p>In the site of the hill of El Rebollar in El Boalo, there are archaeological remains of a rural church dated around the middle of the seventh century A.D./beginning of the VIII A.D. with important reforms and reoccupations that are being studied in detail at the moment. The archaeological historical heritage, which is located at this site needs to carry out a series of measures that avoid its deterioration. Thus, the project proposes the promotion of archaeological heritage as a resource of sustainable local cultural development. The project aims at creating a didactic archaeological site in El Boalo (Madrid) for the visit of small groups, which requires not only the establishment of conservation, accessibility and security infrastructures, but also the reconditioning of the site for its understanding by the general public.</p>	<p>Javier Salido <i>Universidad Autónoma de Madrid</i> javier.salido@uam.es</p>	<p>Society, culture and heritage</p>
	<p>Improving the life of seniors</p>	<p>The program “Improving the life of seniors” aims at the improvement of the daily life and overall quality of life of seniors residing permanently in non-profit care homes for the elders (NPCHE). In order to achieve this, the NGO Mission ANTHROPOS (www.missionanthropos.com), a non-profit organization experienced in implementing programs and initiatives for seniors, partners with the postgraduate program (PGP) of the Medical School of NKUA, “Physiology of Aging and Geriatric Syndromes”, in the context of the CIVIS Open Labs. The program is based on two pillars: the mobilization of seniors through regular digital meetings with high school students and the training of their caregivers and staff of the NPCHE on the</p>	<p>Charitini Petrodaskalaki <i>NGO Mission ANTHROPOS</i> veltionoume.missionanthropos@outlook.com</p>	<p>Health</p>

ANNEX II: LIST OF LOCAL PROJECTS

NKUA		prevention and treatment of geriatric syndromes, based on the Global Geriatric Assessment, as well as the empowerment of their emotional resilience, by members of the PGP. The involvement of the PGP students will be substantial, implementing the service learning. By the end of the program, a Good Practices Guide will be created and offered online, free of charge.		
	Greening our Neighborhood	The proposed educational activities will focus on the need to connect people, residing in urban areas like Athens, to nature and to offer them opportunities to access environmental educational activities at local level. Connecting to nature is particularly beneficial for all, including people belonging to vulnerable social groups, as it can improve their physical and mental health, and foster social inclusion. The proposed educational activities already exist at local level and will be implemented in Pocket Parks that the NGO Organization Earth has already created in collaboration with the Municipality of Athens and corporate partners. They aim to educate and activate citizens about urban sustainability issues through experiential activities, as well as to develop partnerships between civil society, academic community, and other local stakeholders in order to create initiatives and are beneficial to the local community and contribute to urban sustainability. Activities will be designed by postgraduate students of Museum Studies of the National and Kapodistrian University of Athens (NKUA) and will be implemented together with moderators of Organization Earth.	Marlen Mouliou <i>National and Kapodistrian University of Athens</i> mmouliou@arch.uoa.gr	Climate, environment and energy Society, culture and heritage
	Gender budgeting at local level: mapping the needs of women-girls in the area of Kolonos	In the context of the Open Laps of CIVIS – NKUA, the project “Gender budgeting at local level: mapping the needs of women/girls in the area of Kolonos” aims at improving the quality of life of women/girls of diverse social groups and reducing gender inequalities in the area of Kolonos by mapping the needs and challenges of women/girls living in this area, and depicting them in an interactive map. The interactive map will be used in the advocacy activities of the “GREAT budgeting” project, led by ActionAid Hellas since 2020, for the development of a genderresponsive budgeting by the Municipality of Athens. A group of students from the Department of Sociology of the National and Kapodistrian University of Athens in cooperation with ActionAid Hellas and its established local action group of Kolonos citizens and the GREAT budgeting partners will participate in this social project on the field, combining their academic knowledge on gender theories with practical experience, while understanding the challenges faced by women/girls in the area of Kolonos.	Dimitris Parsanoglou <i>National and Kapodistrian University of Athens</i> dimparsa@soc.uoa.gr	Cities, territories and mobilities

ANNEX II: LIST OF LOCAL PROJECTS

	<p>Cultural organisations, museums, dementia and capacity building</p>	<p>The Open Lab "Cultural Organizations, museums, dementia and Capacity Building" will be held within the framework of the European Civic University (CIVIS). Professionals of cultural institutions and graduate and undergraduate students of various specialties from the field of culture will receive training through online seminars and workshops by recognized professionals from the field of health and culture of Greece and the United Kingdom and researchers of NKUA. The aim is to gain knowledge about dementia, to develop and improve their abilities and skills in interacting with this special audience. Also, be informed about the contribution of art and museums in improving the quality of life of people with dementia. Then, in collaboration with cultural and health professionals, the representatives of cultural institutions will develop online actions that will be addressed to people with dementia and their caregivers. The expected benefits from the development of the Open Lab are: cultural professionals have the opportunity to expand their knowledge and skills and cultural organizations will strengthen their social role and find ways to connect creatively with people living with dementia and their caregivers. People with dementia and their caregivers will be given the opportunity to have access and participate actively in the cultural life of their country and will be improved their quality of life.</p>	<p>Marlen Mouliou National and Kapodistrian University of Athens mmouliou@arch.uoa.gr</p>	<p>Society, culture and heritage Health</p>
	<p>Cross-sectoral learning in practice: The example of the Hadrian Aqueduct</p>	<p>The development of a methodology for cross-sectoral cooperation between scientists from different scientific fields who are called to solve a social problem for the benefit of society. This methodology for cross-sectoral cooperation can create a benchmark to be followed by the National and Kapodistrian University of Athens (NKUA). Students from various schools, inside and outside the NKUA will learn (service-learning), in "real-time", how a cross-sectoral, interdisciplinary collaboration works and which methodology is more effective. The project focuses on Hadrian's Aqueduct as a case study of "how the Hadrian as a cultural monument and water resource can relate to local entrepreneurship that benefits citizens".</p>	<p>Theodora Skali National and Kapodistrian University of Athens dskalis@yahoo.gr</p>	<p>Society, culture and heritage</p>
	<p>Small business management and the emotional implications of the pandemic</p>	<p>The project supported entrepreneurs overpassing the COVID-19 crisis and defined the meaning of work and the pandemic lockdown's implications. As the small businesses are what makes a lively city, this Service-Learning project aimed to support these local partners of the community of Tübingen. Therefore, depending on the partners' needs, services were created and provided for dealing with emotionally difficult situations such as the pandemic. Initially, the</p>	<p>Vanessa Weighgold University of Tübingen vanessa.weighgold@izew.uni-tuebingen.de</p>	<p>Society, culture and heritage Cities, territories and mobilities</p>

ANNEX II: LIST OF LOCAL PROJECTS

TU		<p>needs of the entrepreneurs were identified via surveys. In the next step, existing opportunities were screened and turned into real activities for and with the partners. Students cooperated with entrepreneurs to help them to deal with the situation and apply theory in praxis.</p> <p>For the dissemination of the project, a joint workshop was conducted with the partners and/or local officials. Students had the opportunity to publish articles or give radio interviews about their experiences after the project.</p>		
	Inclusion, aging and care as a social challenge	<p>The project deals with demographic change and its impact on society (e.g., health, care, inclusion and social cohabitation). Conceptualized as a Service-Learning project, social-scientific methods such as surveys, interviews, participatory observations should be applied in context. At the same time social commitment will be fostered by solving regional, concrete challenges. Researchers of the university, social enterprises and civil society stakeholders work on suitable solutions to meet specific needs.</p> <p>UNDERSTAND: The participants of this project understand the impact of demographic change on care and inclusive work.</p> <p>REFLECT: Chances and risks, as well as specific challenges that go hand in hand with these developments, are reflected.</p> <p>TRANSFER: Researchers apply specific research methods und participate in co-creation workshops.</p> <p>ENGAGEMENT: Students support voluntary projects and regional social enterprises; they participate in processes of social innovation and are committed to find solutions for societal challenges.</p>	<p>Iris Nikolopoulos <i>University of Tübingen</i> iris.nikolopoulos@uni-tuebingen.de</p>	<p>Health</p> <p>Society, culture and heritage</p>
	Lost places, lost memories? The legacy of Nazi terror along the Swabian Alb	<p>The project aims to research and communicate the materiality of the terror of the Nazi era using examples in the regional environment of the University of Tübingen. It is intended as a think tank that brings together university and non-university research institutions/activities and memorial initiatives to develop future innovative perspectives. The aim is not only to raise awareness among citizens but also to counteract totalitarian and inhuman tendencies in modern-day society.</p> <p>The project should help to evaluate new research and outreach activities at the interface of university and society and to strengthen the integration into the pan-European memorial discourse. Finally, the material legacy of Nazi terror on the university's doorstep, which - unlike prominent memorials of Nazi terror such as Dachau or Buchenwald - are shockingly absent from the collective memory, must be made more visible and established as learning and teaching environments. Two major activities serve this goal: 1. The development of new outreach concepts: The</p>	<p>Lukas Werther <i>University of Tübingen</i> lukas.werther@uni-tuebingen.de</p>	<p>Society, culture and heritage</p>

ANNEX II: LIST OF LOCAL PROJECTS

		factory "Wüste 4" near Erzingen, one of the "lost places" of Nazi terror, will serve as an exemplary case of study for an innovative and inclusive outreach activity. 2. The Development of scientifically based outreach content: by using the case of study of factory "Wüste 4", selected aspects of the materiality of terror are to be researched through an interdisciplinary approach.		
	Inside-Out-Outside-in: Science meets Society at the Swabian Sea	<p>Today, archaeological knowledge is often published in the media. In contrast, consideration of important methods for gaining knowledge in school lessons is increasingly being pushed into the background. Therefore, the direct exchange between science, teachers and different groups of the population in museums should be improved. The CIVIS Open Lab project "Inside-Out-Outside-in: Science meets Society at the Swabian Sea" meets this challenge by bringing together students and practitioners on site to make knowledge accessible and comprehensible.</p> <p>After preparatory seminars, students hold events in schools and decentral located museums as part of their training. The aim is to develop curriculum units for teachers and museum lessons for different target groups, to create a well-founded cultural awareness, to support the competence to evaluate historical processes, to generate an understanding of the cultural developments of the last millennia and to prepare the young generation for present as well as future challenges.</p>	<p>Gunter Schöbel University of Tübingen schoebelg@pfahlbauten.de</p>	Society, culture and heritage
SU	Sparky	<p>Sparky is a healthcare innovation that seeks to address SDG Goal 3: Good Health and Well-Being for All, and 5: Gender Equality. It deals with obesity as a societal issue, and one which can be improved by new digital tools. It deals with gender equality because globally, obesity has a greater impact on women.</p> <p>The primary goal was to further develop a prototype for testing with the clinicians and patients and continue researching and relationship building with the Obesity Clinic.</p>	<p>Erik Skeppar Stockholm University erik.skeppar@gmail.com</p> <p>Erika Råberg Stockholm University erika.raberg@gmail.com</p>	<p>Health</p> <p>Digital and Technological transformation</p> <p>Society, culture and heritage</p>
	Mobility Hub	<p>The project has focused on to work further with the challenge given by SL Business Department, to create a mobility hub for suburban areas of Stockholm to influence people to make more sustainable transportation choices, largely by increasing opportunities on public transport.</p> <p>The project has worked with further investigate the suburban area of Botkyrka and Upplands Väsby to identify and understand local conditions (stakeholders, opportunities, obstacles, alliances) that could be strategic for the successful implementation of a mobility hub. In this sense. In order to do that the project identified four useful components for the development of the project:</p> <ul style="list-style-type: none"> Community workshops to identify mobility and service solutions from a local perspective. 	<p>Alejandro Plata Stockholm university aleplata1@gmail.com</p> <p>Laura Fritz Södertörn University laura.fritz@web.de</p> <p>Veera Matilainen Stockholm university veeramatilainen.vm@gmail.com</p>	<p>Cities, territories and mobilities</p> <p>Climate, environment and energy</p>

ANNEX II: LIST OF LOCAL PROJECTS

		<ul style="list-style-type: none"> ● A review on previous projects or initiatives on mobility for rural areas of Upplands Väsby and similar areas. ● An analysis of Upplands Väsby's policy/regulatory framework regarding the implementation of a mobility hub. ● A stakeholder mapping of community organisations and leaders, local businesses and public officers to identify potential opportunities and obstacles for the implementation of the mobility hub. 		
	Biosfär	<p>A cultural, social and physical activity provide meaning, focus and relaxation, Biosfär breaks down the physical limits of nursing home facilities by providing immersive augmented reality experiences. Biosfär is user-centered, ensuring residents co-create their community. In 2018, Biosfär started testing and developing a program to help elderly people living with Alzheimers to grow, learn and interact with each other and staff. We relied on Design Thinking, participant observation, and curation to deliver an innovative solution for a complex challenge. By 2019, Biosfär installed our first prototype at Stureby Nursing Home, with the support of Realitylab and The City of Stockholm. Today Biosfär provides a range of room-enhanced activities for 94 residents, 5 days a week.</p>	<p>Kayla van Cleave <i>Biosfär AB</i> kvancleave93@gmail.com</p>	<p>Health Digital and Technological transformation</p>
ULB	City of Youth	<p>Supported by Promo Jeunes ASBL, the "Cité de la Jeunesse" project aims to encourage young people to live together and become emancipated through the design of a city created by and for them. This place represents a device allowing the exercise of active citizenship and the meeting of young people from Brussels who do not meet either in school or in their leisure time. Participation in the CIVIS project will enable us to continue the participatory process through, on the one hand, the organisation of workshops to facilitate the collective to determine how to activate, how to make the place available to young people live and how to develop it and, on the other hand, the organisation of practical/creative/manual workshops to bring out common achievements, which will serve as a basis for a collective appropriation of the space.</p>	<p>Eve Hanson <i>Promo Jeunes asbl</i> e.hanson@promojeunes.be</p>	<p>Cities, territories and mobilities</p>
	Taking action to address illiteracy	<p>Lire et Ecrire estimates on the basis of international surveys that 10% of the adult population in Fédération Wallonie–Bruxelles is illiterate, i.e. does not master the fundamental languages (oral, reading, writing, arithmetic) and basic knowledge from primary school, neither in French nor in another language. In this project and around the problem described above, we wish to create a space for reflection and design associating researchers (statutory and/or students) and operators in the field to define an</p>	<p>Sylvie Pinchart <i>Lire et Écrire Communauté française</i> sylvie.pinchart@lire-et-ecrire.be</p>	<p>Society, culture and heritage</p>

ANNEX II: LIST OF LOCAL PROJECTS

		intervention device of the type accompanying a company or organisation in taking account of illiteracy in their development.		
	Board game - Creat'on - Neder-over-Hembeek	<p>This project consists of the creation and implementation of a board game that will be used as the main methodological tool during a Hackaton that aims to work on employment support services in Neder-Over-Hembeek. The main objective is to structure the whole hackathon and to allow all participants to participate regardless of their ability to read, write, or express themselves in French or Dutch.</p> <p>This hackathon is a continuation of the study carried out in 2020 by the ULB Policy Lab on the modes of intervention of the partners of the Brussels City Job Centre in the geographical area of Neder-Over-Heembeek (NOH) financed by the local 2020 project. At the end of this study, avenues of reflection and recommendations were made in order to reach an unemployed public that does not or hardly ever solicits the services of Actiris and its partners.</p>	<p>Aurélie Tibbaut <i>Université libre de Bruxelles</i> aurelie.tibbaut@ulb.be</p>	<p>Society, culture and heritage</p>
	Biorama	<p>Biorama is a structure that works as a platform between the academic world, citizens and public authorities to position itself as an actor at the service of change and urban ecology. Its objective is to develop projects to raise awareness of the living world, to empower citizens for resilient urban projects and to propose nature-based solutions. Biorama wants to invest the urban space as a place of experimentation by involving citizens and their territory for environmental improvements and resilient transformations. Biorama defines itself as a citizens' movement that raises awareness of the importance of nature in the city, and that seeks and develops appropriate processes of ecological action with the cross-involvement of citizens, associations, researchers and public authorities.</p>	<p><i>Biorama</i> contact@biorama.org</p>	<p>Climate, environment and energy</p> <p>Cities, territories and mobilities</p>
	Recognizing the Heritage of the Pontine Bioregion	<p>The project "Riconoscere il patrimonio della Bioregione Pontina" (Recognizing the Heritage of the Pontine Bioregion) assuming the concept of heritage as the set of environmental, urban, rural infrastructural and landscape assets and systems formed through long-lasting co-evolutionary processes between human settlement and the environment, set out to contribute to innovating the strategies of its valorization from the perspective of sustainable development, overcoming the point and fragmented vision of protection through a bottom-up approach, aimed at fostering new processes of participation and social cohesion. Drawing on the experiences of public archaeology and ecomuseum practices, the project's key objective was the formation of "heritage communities," involving both key local stakeholders, schools, and citizens' associations in systematizing knowledge and returning it to the inhabitants. The "heritage</p>	<p>Alberto Budoni, <i>Sapienza University of Rome</i> alberto.budoni@uniroma1.it</p> <p>Claudia Carlucci <i>Sapienza University of Rome</i> claudia.carlucci@uniroma1.it</p>	<p>Society, culture and heritage</p>

ANNEX II: LIST OF LOCAL PROJECTS

SUR		communities" focused on the area of the Pontine Bioregion, comprising the northern part of the Province of Latina with a southern limit in the cities of Terracina and S. Felice Circeo.		
	Seminati	<p>The idea was to make the concept of BIODIVERSITY concrete, measurable and tangible to all, through the senses: taste, sight, touch, smell and hearing. The project took place in Rome where urban gardens are an important reality. Urban gardeners have been involved in activities that aimed at raising awareness on agrobiodiversity because with their actions, however small, they can be protagonists that can make the difference for the urban sustainability. A series of lessons by experts have been focused on four major topics: seeds, pollinators, compost and wild plants. The seminars have taken place in presence and on line too.</p> <p>As foreseen, theoretical elements about agrobiodiversity together with practical instruments for seed and compost production have been shared. The work started from an APP used for the evaluation of the edible species diversities for the resilience of the agrobiodiversity to nurture and safeguard our planet. This APP, originally made to support the production systems of small farmers in developing countries, was to be adapted to the Roman context and applied to gain new information and improve the production in urban gardens.</p>	<p>Luca D'Eusebio Zappata Romana zappataromana@gmail.com</p>	<p>Climate, environment and energy</p> <p>Society, culture, heritage</p> <p>Cities, territories and mobilities</p>
	Fito-Bio	<p>FITOBIO has allowed to respond to some specific requests concerning medicinal plants sector. In particular, the companies involved in the project were interested to deepen the knowledge of the chemical-nutraceutical composition of extracts from specific medical plant. Although in the proposal the study of single medicinal plant, namely <i>Arctium lappa</i> (burdock), was proposed two other plants <i>Melissa Officinalis</i> and <i>Tarassacum officinale</i> were also investigated in order to meet the demands of companies.</p>	<p>Luisa Mannina Sapienza University of Rome luisa.mannina@uniroma1.it</p>	<p>Health</p> <p>Cities, territories and mobilities</p>
	PiùAbile	<p>The overall goal of the Project was to encourage an approach on the topic of mobility that is also "socially" sustainable. The project aimed to stimulate greater awareness of some social and environmental issues related to the topic of disability, promoting and helping to build inclusive communities through new models and policies.</p> <p>This kind of approach, can open to a small/big social revolution in which the Civis Alliance can and should play a driving role. In this regard, the project proposed to initiate stakeholder discussion tables and promote initiatives to bring out the so-called "needs" and constraints to make people understand that this kind of vision is needed in the cities of the future that are on their way to being smart and interconnected.</p>	<p>Sabrina Lucibello Sapienza University of Rome sabrina.lucibello@uniroma1.it</p>	<p>Cities, territories and mobilities</p>

ANNEX II: LIST OF LOCAL PROJECTS

	Taste without waste	<p>The overall objective of the Project was to define a new, perfectly circular paradigm - to open in fact to a small/big social revolution in which the Civis Alliance can play a propulsive role - based on the principle of "Mindfull eating" that is, the awareness of what is eaten and what is discarded, against the backdrop of a new economic model of Made in Italy development.</p> <p>In this regard, the project proposed to initiate discussion tables among stakeholders and to promote initiatives to bring out the so-called "needs" and constraints to make people understand that food waste is not waste, but a resource and raw material for new circular and sustainable products.</p>	<p>Sabrina Lucibello <i>Sapienza University of Rome</i> sabrina.lucibello@uniroma1.it</p>	<p>Climate, environment and energy</p>
AMU	Vénères&Solidaires	<p>The project Vénères&Solidaires (V&S) was born during COVID-19, a context very hard for youth. With V&S, we offer the possibility to young people to exchange, to share and if they want, to imagine actions to respond to their specific needs.</p> <p>This project aim to:</p> <ul style="list-style-type: none"> ● Allow young people to discuss, to share their experiences and, when possible, to act together ● groom young ambassadors to collect the voice of the youth ● collect testimonies of solidarity activities around them and to build citizen initiatives 	<p>Pauline RENOUX <i>Citizens Campus</i> pauline@citizenscampus.eu</p>	<p>Climate, environment and energy</p> <p>Society, culture, heritage</p> <p>Cities, territories and mobilities</p>
	Smart & Civic Port Marseille	<p>This project wants to help meet the urgent need to associate citizens within the intelligent changes to the Grand Port Maritime de Marseille. This Marseille Port is to be reconciled with the city of Marseille by involving its citizens in its transformation. The new economic pressure put on the port through the cruise ship activity means more pollution and more need to find sustainable solutions. The approach used will be to raise awareness among the political and strategic decision-makers of Marseille, the citizens of Marseille, the multinational cargo companies, cruise ship companies and AMU researchers. A think/do tank would be created and could include a Hackathon.</p>	<p>Franck Araujo <i>CEO Accélérateur M</i> franck.araujo@accelerateurm.com</p>	<p>Society, culture, heritage</p> <p>Cities, territories and mobilities</p> <p>Digital and technological transformation</p>
	Interstice	<p>This project aims to create and use new tools in urban creativity and mobilization for a temporary urbanism project in Marseille in the 12th arrondissement. The aim is to give the local residents the opportunity to decide what to do with the 2 hectares of land that needs to be used. To help in the decision making, there will be several temporary trials with different ideas so that the users themselves can understand what their needs really are. A call for ideas will be used, citizens will be trained in the use of open data and collective intelligence, questionnaires and surveys, workshops and experimentation will help in collective decision making. The launch date will depend on the Marseille citizen consultation</p>	<p>Renaud Vignes <i>Nos Quartiers Demain</i> Renaud.vignes13@gmail.com</p>	<p>Cities, territories and mobilities</p>

ANNEX II: LIST OF LOCAL PROJECTS

		results. This corresponds to the approach recommended by the EU to include universities in urban decision making.		
	Get lit	GET LIT aims to provide solutions for the needs of student populations who have been experiencing, due to COVID 19, problems with access to food, isolation, lack of experience in internships, and in Service-Learning and lack of opportunities in project management. By using Service-Learning methods applied to civic projects, GET LIT will participate to the best practices of SL in CIVIS OL partners. By working closely with different AMU Masters Programs (management, hygiene and safety, project management, languages and cultures) GET LIT plan to deploy several projects to aid those students most in need. The experience gathered from these actions will then be used to create and disseminate our most relevant and successful practices.	Elizabeth Venisse <i>Eurasia Net</i> partenariats.eurasianet@gmail.com	Climate, environment and energy Society, culture, heritage Health Cities, territories and mobilities
	Schooling support: School, family, neighbourhood, all on board!	Support for children's schooling and the involvement of parents and the family and social environment in their schooling are important issues for their academic success and development. In the priority education zones (REP) in the hypercentre of Marseille, relations between parents and school actors (headmasters, teachers, administrators) are often problematic: gaps between parental and school expectations; mutual misunderstandings; difficulties in creating a relationship of shared trust; linguistic and cultural distances; different relationships to knowledge and to the postures of knowledge, etc. Faced with these observations, the three associations, Anthropos Cultures Associées, L'Université du Citoyen and Les Minots de Saint-Charles, are each involved in actions to support parents in their children's schooling in schools in the centre of Marseille. In particular, they work in collaboration with the city's Cités Educatives. Since September 2021, we have been developing a participatory research-action project financed by the Cité éducative aimed at creating a collaborative space between researchers, parents, school actors, pupils and local actors (educators, sports and cultural facilitators, etc.) through the forum theatre tool.	Sophie Lewandowski <i>Laboratoire Population Environnement Développement (LPEd)</i> sophie.lewandowski@ird.fr	Society, culture, heritage
	Our cultures, our futures	"Nos cultures, nos futures" is a project aiming at transforming the relationship to arts and culture of the populations through and culture through the co-construction of a cultural mediation system and the creation of a "spectator's route". The purpose of the project is to revitalise the action of cultural policies aimed at bringing together people who would otherwise be distant from them through the co-creation of mediation tools based on the meeting of users of the La Criée Theatre in Marseille.	Laure Ciosi <i>Aix-Marseille Université</i> laure.ciosi@univ-amu.fr	Society, culture, heritage

ANNEX II: LIST OF LOCAL PROJECTS

	<p>Walk for the LAMAs...and discover the super power of your muscles!</p>	<p>With our 14 partners, we designed "little European researchers" courses for more than 600 pupils and schoolchildren in Fuveau, a village in the Bouches-du-Rhones region, involving some 70 researchers, teacher-researchers, students and university staff over a period of four days. In the form of workshops, these courses allowed young and old alike to carry out experiments, play and learn in order to better understand the problems linked to rare genetic diseases and in particular LAMA2 Congenital Muscular Dystrophy (DMCA1 or LAMA2 DMC – an ultra-rare genetic disease that affects one of the pupils of Fuveau, Tess), to muscle and movement, to adapted sports and to inclusion. The aim was also to encourage exchanges between the schoolchildren and their families, the teaching teams and the scientific and student community of Aix Marseille University.</p>	<p>Celine Damon Aix-Marseille Université celine.damon@univ-amu.fr</p>	<p>Society, culture, heritage</p> <p>Health</p>
	<p>Lab'Citoyenneté Villa Air Bel</p>	<p>The Lab'Citoyenneté Villa Air-Bel (Lab'VAB) is developed in partnership with the Villa Air-Bel association, and its vast network of partners. The Lab'VAB contributes to the project carried out by the Villa Air-Bel association in order to establish a cultural third place in the heart of Air Bel, a residential housing complex and urban policy neighbourhood located in the 11th district of the city of Marseilles, currently rehabilitated by the public authorities. On this site, in partnership with the National Agency for Urban Renewal and the Metropolis, is planned the creation of a memorial dedicated to the history of the "Villa Air-Bel" - a bastide that protected and saved anti-fascists and Jewish artists and intellectuals being persecuted by the German authorities and the Vichy regime in 1940-1941.</p>	<p>Sylvie MAZZELLA Aix-Marseille Université sylvie.mazzella@univ-amu.fr</p>	<p>Society, culture, heritage</p> <p>Cities, territories and mobilities</p>

ANNEX III: OPEN LAB DISSEMINATION MAP 2020-2022

DATE	ACTIVITY	UNIVERSITY CHANNELS (Website/SM)	CIVIS CHANNELS (Website/SM/Newsletter)	EXTERNAL MEDIA
17-19 Feb 20	Madrid Open Lab Kick Off	UAM/kickoff CIVIS Open Lab	launch-of-the-first-civis-open-lab-at-universidad-autonoma-de-madrid	Tres Cantos joins CIVIS European University project Cadena Ser Radio
				Diary Tres Cantos
				Tres Cantos joins CIVIS European University Project City website
24 Feb 20	OL team F2F Meeting (Madrid)	UAM en Instagram: "Hoy tenemos en la #UAM a los representantes de las universidades de @CIVIS eu que coordinarán los #CivisOpenLabs. Un paquete de trabajo que..."		
8 Apr 20	Launch of First OL projects (Madrid)		CIVIS OpenLab Call for Projects: selection results – Noticias – CIVIS - A European Civic University	
17 Aug 20			Project 1_Circular Cities through Circular Economy	
18 Aug 20			CIVIS OL Project 2 Forum-Sustainable-Mobility	
20 Aug 20			CIVIS OL Project 3_Service-Learning against COVID	
28 Sep 20	Bucharest Open Lab Kick Off	unibuc.ro/evenimentul-open-lab-organizat-de-universitatea-din-bucuresti-in-cadrul-civis	launch-of-the-second-civis-open-lab-at-the-university-of-bucharest	ziarulprofit.ro/university-of-bucharest-announces-launch-of-open-lab
8 Oct 20	AMU Co-Building Meeting with Stakeholders			

ANNEX III: OPEN LAB DISSEMINATION MAP 2020-2022

20 Oct 20	Bucharest Open Lab Kick Off			university-of-bucharest-announces-launch-of-open-lab-within-civis-financing-of-social-responsibility-projects_1511108.html
27 Nov 20	Madrid Open Lab Circular Cities Project	UAM/News/Municipios-Circulares-UAM-2020/		
2 Dec 20	Madrid Open Lab Circular Cities Project against waste management			Hoyo de Manzanares, proyecto de Municipio Circular, contra la basuraleza Madrid Norte 24 horas
6 Dec 20	Service Learning Webinar (Madrid Open Lab)	(1) Universidad Autónoma de Madrid - Publicaciones Facebook		
		Universidad Autónoma de Madrid en Instagram: "El próximo viernes 11 de diciembre a las 10.00h, el CIVIS Open Lab de la #UAM organiza un seminario on-line sobre Aprendizaje-Servicio..."		
11 Dec 20			Webinar on Service learning: methodology basis & implementation guidelines – Noticias – CIVIS - A European Civic University	
15 Dec 20	Athens Open Lab Kick Off			launch-of-the-third-civis-open-lab-at-national-and-kapodistrian-university-of-athens
14 Dec 20	Rome Open Lab Kick Off	uniroma1.it/en/notizia/sapienza-open-lab		launch-of-the-fourth-civis-open-lab-at-the-sapienza-university-of-rome
15 Dec 20	WP3 Leader Interview			6 questions to better understand the CIVIS Open labs and see where CIVIS is going – Noticias – CIVIS - A European Civic University

ANNEX III: OPEN LAB DISSEMINATION MAP 2020-2022

18 Dec 20	Brussels Open Lab Kick Off	Brussels Research Open Lab	Launch of the fifth CIVIS Open Lab at Université libre de Bruxelles – Noticias – CIVIS - A European Civic University	Brussels Research Open Lab (BROL) KickOff Meeting - Univercity
-----------	----------------------------	--	--	--

2021

29 Jan 21	Bucharest Projects Launch - results announced	https://unibuc.ro/castigatorii-primului-apel-civis-open-lab-ub/		
23-feb.-21	UB communicate - Projects financed through CIVIS Open Lab	https://unibuc.ro/universitatea-din-bucuresti-finanteaza-proiecte-cu-impact-in-societate/		
25 March 21	AMU 1st Call for Projects launch	First call for Open Lab CIVIS projects Aix-Marseille Université (univ-amu.fr)		
6 April 21		Aix-Marseille Université - En Facebook		
14 April 2021	SU Call for Applications - Grants for Students Projects further development. Stockholm OL & CIVIS	Call for applications – grant for further development of student projects Openlab Stockholm (openlabsthlm.se)		
31-may.-21	Madrid Open Lab _Forum for Sustainable Mobility Project: Phase Completed			https://www.madridnorte24horas.com/onda-cero-madrid-norte/se-completa-la-primera-fase-del-foro-para-la-movilidad-sostenible-en-el-eje-uam-sierra-de-guadarrama/
29-sep.-21	Brussels Research Open Lab Summer School		Interdisciplinary and Participatory Summer School on Urban Studies	
18-oct.-21	Launch of Biucharest 2nd Call projects	https://unibuc.ro/ub-a-desemnata-proiectele-castigatoare-in-cadrul-celui-de-al-doilea-open-lab-civis-ub/		

ANNEX III: OPEN LAB DISSEMINATION MAP 2020-2022

November 2021	CIVIS Poen Labs Open Session at Brussels Global CIVIS Days		(459) Global CIVIS Days 2021 - Open Labs - YouTube	
November 2021	CIVIS Open Labs on YERUN Newsletter (#Nov 2021)			https://mailchi.mp/81c757a3db8a/22-yerun-news-whats-up-at-young-universities?e=0b7a0f3111

2022

2-March-2022	Local CIVIS Day - AMU Open Lab	Societal Innovation: Local CIVIS Days Aix-Marseille University 100% online Aix-Marseille Université (univ-amu.fr) Local CIVIS Days are back at AMU! Aix-Marseille Université (univ-amu.fr)	Aix-Marseille Université: Societal innovation at the heart of Local CIVIS Days – Noticias – CIVIS - A European Civic University	
22-may.-22	UAM CIVIS Label & Award	El Programa de Voluntariado Internacional de la UAM recibe un Cavis Label & Award		
8-june-2022	Preparing to luanch our CIVIS Oopen Lab -Gasgow at Athens GCDs Glasgow's GCPH Small Grants Found: Milton Bank Pirmary School Awardee video	Engaging Locally, Connecting Globally: Preparing to Launch our CIVIS Open Lab – #UofGEngage Forum Blog https://edshare.gcu.ac.uk/8752/1/We are Miltonbank Primary.m4v		
17-june-2022	Local CIVS DAY - UAM Open Lab	La UAM da a conocer la labor de los Open Labs de la alianza europea CIVIS	UAM Local CIVIS Days: Open Lab, the link between the university and its environment – News – CIVIS - A European Civic University	
17-june-2022	Open Lab ULB - Naturashare: Finding Nature in the cities	CIVIS lance NaturaShare: trouver la nature dans les villes CIVIS - Actualités de l&apos;ULB	NaturaShare - Finding nature in the CIVIS cities – CIVIS - A European Civic University	
13-july-2022	Open Lab Transnational project dissemination action in Glasgow		https://civis.eu/es/events/civis-transnational-initiative	