

CALCULATION OF THE LHC-KICKER BEAM IMPEDANCE*

Glen R. Lambertson
Lawrence Berkeley National Laboratory
Berkeley, California 94720

Abstract

Longitudinal and transverse beam impedances are calculated for the injection kickers designed for use in the CERN large hadron collider. These combine the contributions of a ceramic beam tube with conducting stripes and a traveling-wave kicker magnet. The results show peak impedances of 1300 ohm longitudinal and 8 MΩ/m transverse for four units per ring.

1 INTRODUCTION

The design for the LHC calls for four injection-kicker units for each beam[1], each unit is a c-magnet with an alumina beam tube, shown schematically in Fig. 1. Thirty conducting stripes are applied inside the beam tube (See Table 1); each of these connects to the continuing metal tube through R-C networks. The impedances Z_L of this liner and Z_M of the magnets are combined in parallel to give the total impedance Z_B .^a

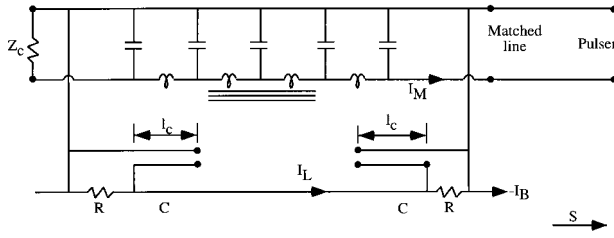


Figure 1: Schematic of circuits in kicker magnet with liner. I_B is the beam current.

2 LINER LONGITUDINAL IMPEDANCE

A metallized outer sleeve on the ceramic tube overlaps the inner stripes by about 0.28 m to provide 600 pF capacitance. Calculated as an open-ended transmission line this capacitor's impedance is $\left[jC \frac{v_c}{\ell_c} \tan \frac{\omega \ell_c}{v_c} \right]^{-1}$. The stripes on the ceramic contribute a small inductance; this has been calculated to be only 6.5 pico-henry. Combining the liner's components, the liner impedance becomes

* Work supported by the U.S. Dept of Energy under Contract No. DE-AC03-76SF00098.

^aMore details of these calculations are given in Ref. [2]

Table 1: Liner Parameters

Tube inner radius	b	21 mm
Ceramic well thickness		4 mm
Relative dielectric constant	ϵ_r	9
Number of stripes	N	30
Length of stripe	ℓ_s	3540 mm
Width of stripe	w	4 mm
Space between stripes	a/2	4 mm
Capacitance (30 stripes, one end)	C	600 pF
Length of capacitor line	ℓ_c	280 mm
Phase velocity along capacitor	v_c	$\sim 0.385 c$
Resistance (5000/30)	R	169 ohm

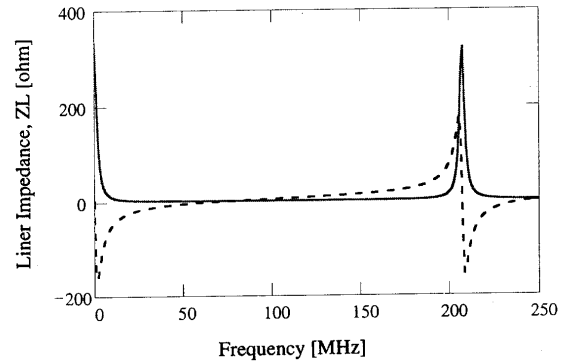


Figure 2: Impedance of the liner. Solid — $Re Z_L$ [Ohm]. Dashed — $Im Z_L$ [ohm].

$$Z_L = \frac{2}{\frac{1}{R} + j \frac{C v_c}{\ell_c} \tan \frac{\omega \ell_c}{v_c}} + j \frac{\omega \mu_0 \ell_s}{2\pi N} \frac{\epsilon_r - 1}{\epsilon_r + 1} \left(\csc \frac{\pi w}{2a} \right) \quad (1)$$

which is plotted in Fig. 2. We see at intervals of 206 MHz the impedance maxima that occur when the capacitor length is multiples of one-half wavelength.

3 IMPEDANCE FROM THE MAGNET

The portion of the beam current that is not shielded by the liner current I_L induces voltages in the magnet. This current $I_M = I_B + I_L$ couples to the magnet in two ways, (1)

Table 2: Magnet Parameters

Length	ℓ	2657 mm
Aperture gap	g	54 mm
Aperture width	d	54 mm
Winding inductance per unit length ($=\mu_0$)	L'	1.25×10^{-6} Hy/m
Winding line-impedance	Z_c	5 ohm
Phase velocity (Z_c/L')	v	4×10^6 m/sec
Drive line delay (example)	τ	0.233 μ sec

magnetic images in the yoke and conductors and (2) currents induced in the winding. Parameters of the magnet are given in Table 2 and the geometry of its square aperture in Fig. 3.

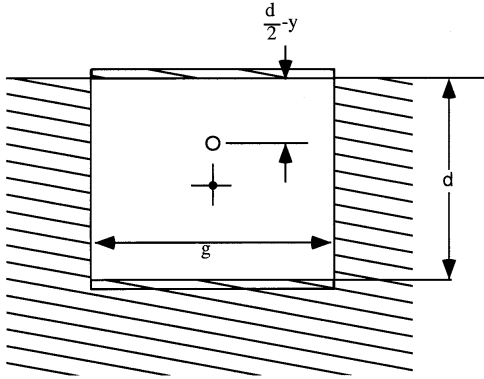


Figure 3: Aperture of the magnet bounded by winding conductors at $Y = \pm d/2$. Current I_M is shown at distance y from the center.

Coupling to the yoke has been calculated by summing the fields of image currents in the ferrite and in the conductor surfaces. This gives an inductance of $0.317 L'\ell$.

To calculate the mutual coupling to the winding one must consider in detail the propagation of induced currents in the winding and reflection or absorption at the ends of the winding circuit [2][3]. The drive line is assumed to be open at the pulser; the other end is impedance-matched by terminator Z_c . In an increment of length ds , the mutual inductance between beam and winding is

$$M'ds = \mu_0 \frac{\frac{d}{2} - y}{g} ds \quad (2)$$

Currents induced by this coupling propagate away from ds at velocity v . Integrating over the winding length we obtain the directly-induced current

$$I = -I_M \frac{vL'}{2Z_c} \left(1 - \frac{2y}{d}\right) \left(1 - e^{-\frac{ks}{2}} \cos ks\right) \quad (3)$$

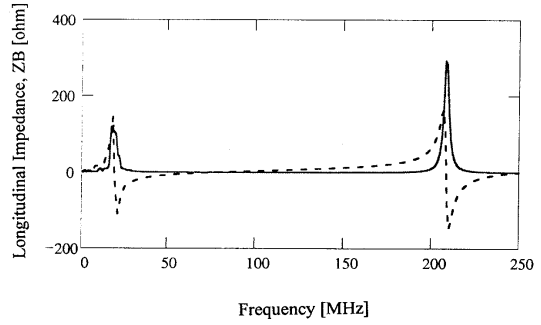
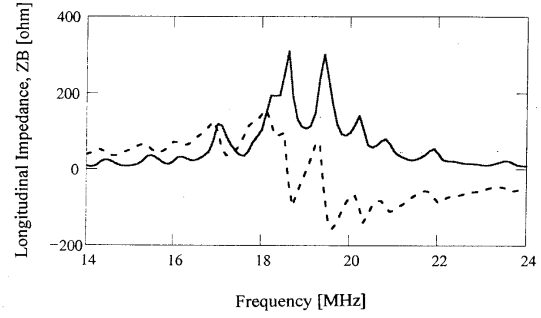


Figure 4: Total longitudinal impedance. Solid — ReZ_B [ohm]. Dashed — ImZ_B [ohm].

where $k = \omega/v$. This is then reflected at the pulser and the resultant net current induces at the beam position y (Fig. 3) the voltage (Here $\theta = \frac{k\ell}{2}$)

$$V = \frac{I_m Z_c}{2} \left(1 - \frac{2y}{d}\right)^2 \left[j\theta - e^{-j\theta} j \sin \theta + e^{-j2(\omega\tau+\theta)} \sin^2 \theta \right] \quad (4)$$

Adding to this the voltage from the yoke we get from the magnet the impedance at aperture center

$$Z_M = \frac{Z_L}{2} [0.268 j\theta + e^{-j\theta} j \sin \theta - e^{-j2(\omega\tau+\theta)} \sin^2 \theta] \quad (5)$$

The total impedance is now the parallel combination of Eq. 1 and Eq. 4 plotted in Fig. 4. In addition to the capacitor resonances at 206 MHz intervals, we see here at 19 MHz a resonance between the liner's capacitance and the magnet's inductance. These peaks are limited to 330 ohm by the series resistors of the liner.

4 TRANSVERSE IMPEDANCES

Because the liner is azimuthally symmetric about the beam centerline, its transverse impedance is given in terms of Z_L from Eq. 1 as

$$Z_{Lt} = \frac{2c}{\omega b^2} Z_L \quad (6)$$

Images in the yoke and conductors give zero impedance in the direction y parallel to the pole faces.

In the x -direction, images sum to give

$$Z_{Mx} = 0.019 j \frac{\mu_0 c \ell}{g^2} \quad (7)$$

In Eq. 3 we have shown the y -dependence of the winding contribution to Z_{\parallel} . The Panofsky-Wenzel theorem allows us to calculate Z_y from Z_{\parallel} as

$$Z_y = \frac{c}{\omega} \frac{\partial}{\partial y} \frac{\Delta Z_{\parallel}}{\Delta y} \quad (8)$$

This is

$$Z_{My} = \frac{c}{\omega} \frac{2}{d^2} Z_c \left[-j \theta + j e^{-j\theta} \sin \theta - e^{-j2(\omega\tau+\theta)} \sin^2 \theta \right]$$

Combining contributions to the transverse impedances, the totals are shown in Figs. 5 and 6. The $2M\Omega/m$ peak in Z_x that appears at 40 MHz is a resonance between liner and magnet. Z_y is strongest at low frequency where at orbital frequency, 11.2 kHz, it is $169 - j 3.40 \times 10^3$ ohm/m.

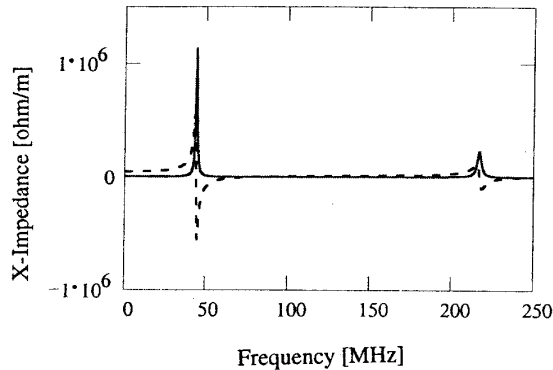


Figure 5: Total horizontal impedance. Solid — ReZ_x . Dashed — ImZ_x .

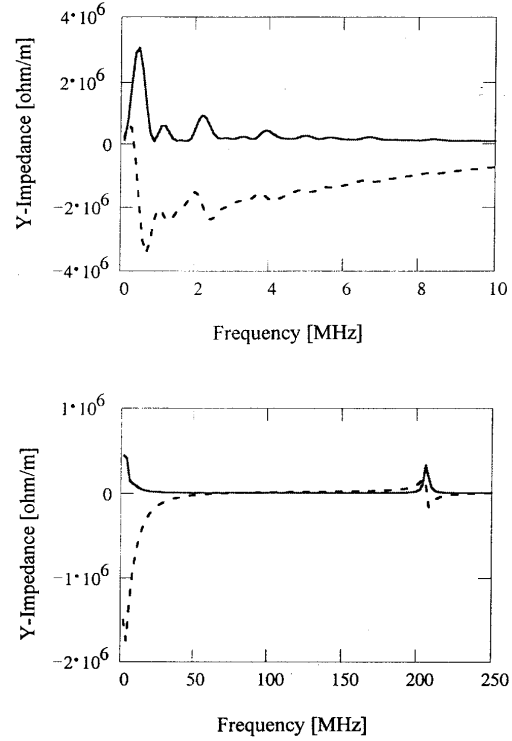


Figure 6: Total vertical impedance. Solid — ReZ_y . Dashed — ImZ_y .

5 REFERENCES

- [1] L. Ducimetière, U. Jansson, G. H. Schröder, E. B. Vossenberg, M. J. Barnes, G. D. Wait, "Design of the Injection Kicker Magnet System for CERN's 14 TeV Proton Collider LHC," 10th IEEE Pulsed Power Conference, Albuquerque, NM, July 10 - 13, 1995.
- [2] G. R. Lambertson, "LHC Kicker Beam-Impedance Calculation," LBNL-42838, CBP Note-283, October 1998.
- [3] W. R. Smythe, Static and Dynamic Electricity, McGraw Hill, New York, 1939, p. 89.