

## **PS lepton statistics (1990 - Period 1)**

**Here are the PS Complex fault rate figures over the March 9 to June 12 period (2006 hours):**

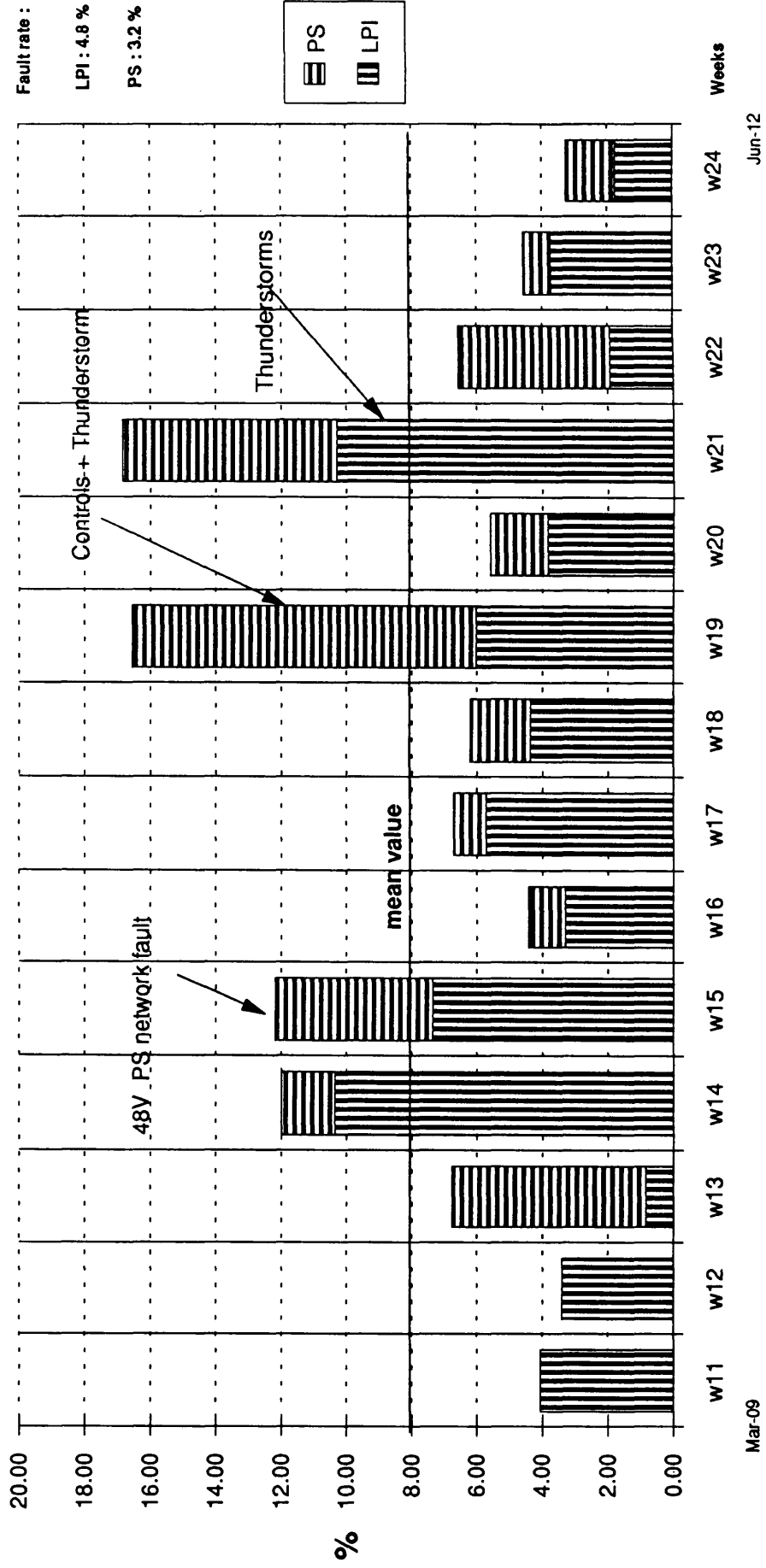
**The first histogram gives the weekly fault rate distribution for the PS and LPI machines. The fault rates, averaged over the whole period, when the PS machines work as an injector for LEP are :**

- 4.8 % fault rate for the LPI (LIL + EPA)**
- 3.2 % fault rate for the PS.**

**Indicative fault distributions per system in both machines are also given. "External " faults have to be understood as mains and water fault as well as faults on systems not under PS responsibility.**

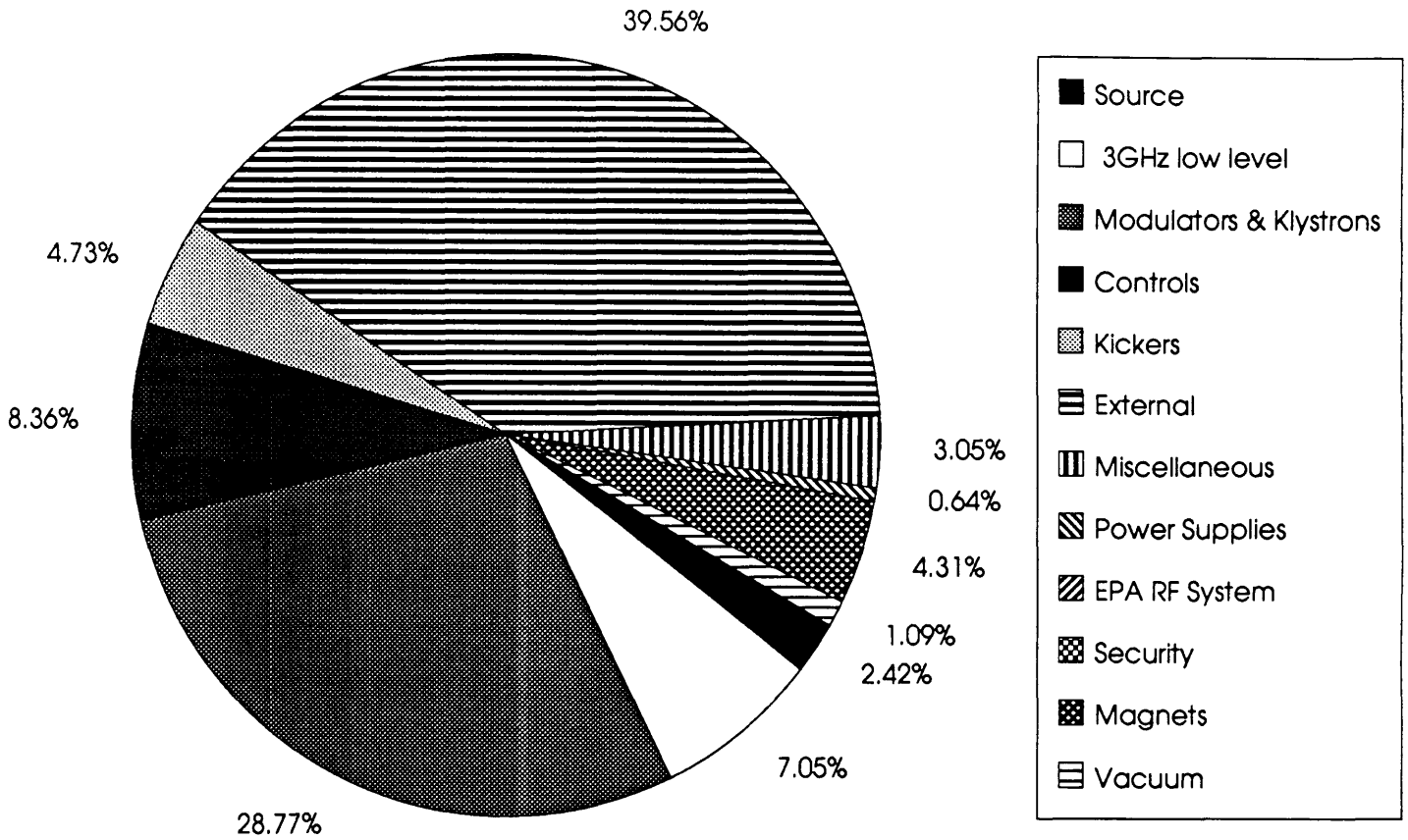
**G. Azzoni  
J. Boillot  
B. Frammery  
K. Priestnall**

# LEPTON STATISTICS - 1990 - Period 1

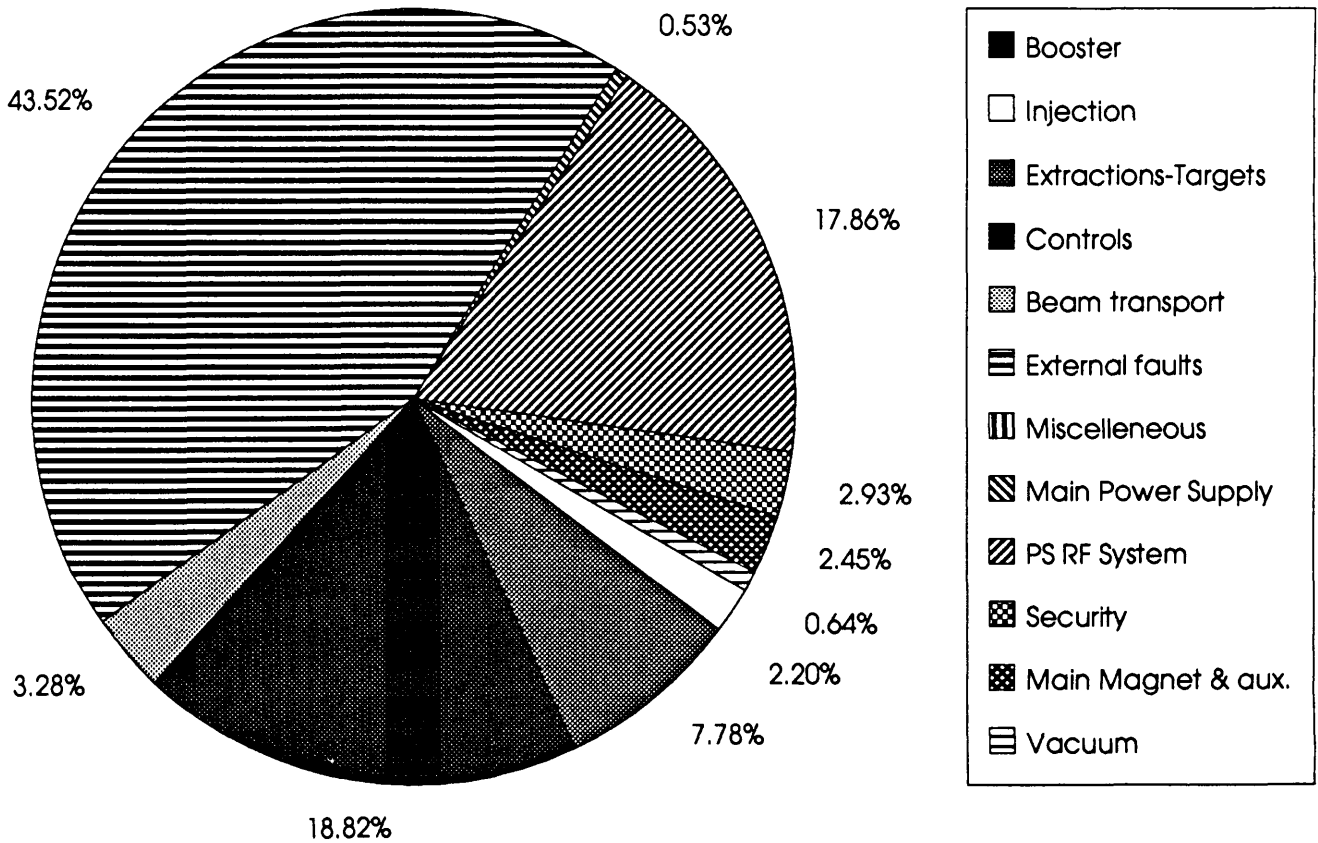


### LPI Fault Distribution

Run 1 - 1990



### PS Fault Distribution



**Distribution list :**

U. Amaldi / PPE  
G. Brianti / DG  
R. Billinge / PS  
F. Bonaudi / ECP  
M. Bouthéon / PS  
J. Branson / PPE  
E. Brouzet / SL  
K. Cornelis / SL  
P. Darriulat / DG  
L. Evans / SL  
A. Faugier / SL  
D. Froidevaux / PPE  
V. Hatton / SL  
A. Hofmann / SL  
W. Hoogland / DG  
K. Hübner / PS  
A. Michelini / PPE  
S. Myers / SL  
J. Panman / PPE  
D. Plane / ECP  
G. Plass / AC  
PS Group Leaders & Associates  
PS & LPI Supervisors  
J.P. Riunaud / PS  
C. Rubbia / DG  
J.J. Thresher / DG  
R. Voss / PPE  
H. Wachsmuth / PPE  
J Wotschak / PPE