



## Two-symmetry Penning-Ioffe trap for antihydrogen cooling and spectroscopy

E. Tardiff<sup>a</sup>, X. Fan<sup>a,b</sup>, G. Gabrielse<sup>a,\*</sup>, D. Grzonka<sup>c</sup>, C. Hamley<sup>b</sup>, E.A. Hessels<sup>d</sup>, N. Jones<sup>b</sup>, G. Khatri<sup>e</sup>, W.S. Kolthammer<sup>f</sup>, D. Martinez Zambrano<sup>a</sup>, C. Meisenhelder<sup>b</sup>, T. Morrison<sup>b</sup>, E. Nottet<sup>a</sup>, E. Novitski<sup>g</sup>, C.H. Storry<sup>d</sup>

<sup>a</sup> Center for Fundamental Physics, Northwestern University, Evanston, IL 60208, USA

<sup>b</sup> Department of Physics, Harvard University, Cambridge, MA 02138, USA

<sup>c</sup> IKP, Forschungszentrum Jülich, 52425 Jülich, Germany

<sup>d</sup> York University, Department of Physics and Astronomy, Toronto, ON M3J 1P3, Canada

<sup>e</sup> CERN, 1211, Geneva 23, Switzerland

<sup>f</sup> Department of Physics, Imperial College, London SW7 2AZ, UK

<sup>g</sup> Department of Physics, University of Washington, Seattle, WA 98195, USA

### ARTICLE INFO

#### Keywords:

ATRAP  
Antihydrogen  
Ioffe Trap  
Neutral Particle Trap

### ABSTRACT

High-accuracy spectroscopic comparisons of trapped antihydrogen atoms ( $\bar{\text{H}}$ ) and hydrogen atoms (H) promise to stringently test the fundamental CPT symmetry invariance of the standard model of particle physics. ATRAP's nested Penning-Ioffe trap was developed for such studies. The first of its unique features is that its magnetic Ioffe trap for  $\bar{\text{H}}$  atoms can be switched between quadrupole and octupole symmetries. The second is that it allows laser and microwave access perpendicular to the central axis of the traps.

### 1. Introduction

Extremely low energy antiproton ( $\bar{p}$ ) and antihydrogen ( $\bar{\text{H}}$ ) physics began with the 1986 demonstration that  $\bar{p}$  beams could be slowed to and trapped at [1] energies ten orders of magnitude lower than previously realized, using CERN's Low Energy Antiproton Ring (LEAR). Afterwards, the designation "low energy" for antiprotons began shifting from the MeV energies of earlier reports down to the much lower energies made possible by the new methods. At the time, the proposed use of such cold  $\bar{p}$  for low energy  $\bar{\text{H}}$  production [2] and the magnetic trapping of  $\bar{\text{H}}$  atoms [3] were radical departures from the beam-based approaches previously envisioned [4].

The nested Penning-Ioffe traps proposed for synthesizing  $\bar{\text{H}}$  atoms [3] have since demonstrated their worth by producing and capturing all the trapped  $\bar{\text{H}}$  atoms realized so far. A nested Penning-Ioffe trap [2] is the superposition of a Penning trap (used to trap  $e^+$  and  $\bar{p}$ ) with a magnetic-field-minimum trap [5] (to trap the neutral  $\bar{\text{H}}$  produced from  $e^+$  and  $\bar{p}$ ). The basic ideas of a nested Penning trap and of a Ioffe trap are briefly summarized in Sections 2.1 and 2.2, respectively. A nested Penning-Ioffe trap is briefly summarized in Section 2.3.

The first Penning-Ioffe trap, built by ATRAP, used a quadrupole Ioffe field [6] to demonstrate that  $\bar{\text{H}}$  atoms could be produced within these fields [7] and to confine ground-state  $\bar{\text{H}}$  atoms [8]. This Penning-Ioffe trap is discussed in Section 3 to contrast design and construction methods with those used for the trap focused on in this work.

Meanwhile, others used an octupole Penning-Ioffe trap [9] to confine  $\bar{\text{H}}$  atoms [10]. A third trap, ATRAP's second-generation trap, differs in that it can produce either a quadrupole field, an octupole field, or a combination. Recent simulations carried out for laser cooling of trapped  $\bar{\text{H}}$  atoms and for spectroscopy of  $\bar{\text{H}}$  atoms, soon to be reported, will explore the relative advantages and disadvantages of the two symmetries. These include a relatively harmonic  $\bar{\text{H}}$  potential well for spectroscopy in a quadrupole field, and reduced distortion of the Penning trap in an octupole field.

The scheme used to produce trappable  $\bar{\text{H}}$  involves bringing the  $e^+$  and  $\bar{p}$  plasmas into a Ioffe trap, energizing the trap, and inducing the  $e^+$  and  $\bar{p}$  to interact to form  $\bar{\text{H}}$ . To count trapped  $\bar{\text{H}}$ , the trap can be shut off and annihilation products detected. ATRAP's first Penning-Ioffe trap was slow to turn on ( $\sim 15$  min) and off ( $\sim 10$  min as designed). The shape and speed of this trap both contributed to loss of constituent particles during the turn-on period, and the slow turn-off time increased the difficulty of separating the  $\bar{\text{H}}$  annihilation signal from the background rate. ATRAP's second generation trap addresses these limitations.

The focus of this report is the design and construction of this second-generation trap (Section 4), and a demonstrated performance comparable to design expectations (Section 5). The biggest challenge came from the unique choice to include radial sideports to allow laser beams and microwaves to enter the Penning-Ioffe traps perpendicular

\* Corresponding author.

E-mail address: [gerald.gabrielse@northwestern.edu](mailto:gerald.gabrielse@northwestern.edu) (G. Gabrielse).

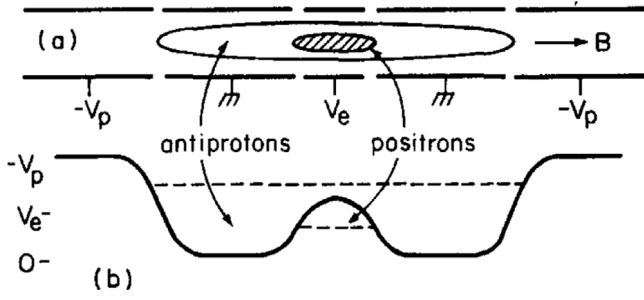


Fig. 1. A cross section of a cylindrically symmetric nested Penning trap (a) and the potentials that produce trap wells for  $\bar{p}$  and  $e^+$  (b).  
Source: Taken from [2].

to their central symmetry axis. The choice to be able to produce a Ioffe trap of either a quadrupole or octupole symmetry also added to the challenge.

The usefulness of the low-inductance, two-symmetry, Penning-Ioffe trap is illustrated with two examples (Section 6). The first example is images of ejected plasmas that were captured, cooled and rotated to achieve a small diameter within the Penning trap (Section 6.1). The second example consists of signals from  $\bar{H}$  atoms that were confined in the Ioffe trap until it was rapidly turned off (Section 6.2).

## 2. Superimposed traps

### 2.1. Nested penning traps for $\bar{H}$ production

The nested Penning trap was invented [2] to bring cold, oppositely-charged  $\bar{p}$  and  $e^+$  into contact long enough to produce cold  $\bar{H}$ . All of the trapped  $\bar{H}$  so far has been produced in such a device. A nested Penning trap starts with a uniform magnetic field along the symmetry axis of the trap electrodes,

$$\vec{B} = B_0 \hat{z}. \quad (1)$$

Opposite sign charges are suspended in the outer and inner wells of a cylindrically symmetric, nested Penning trap (Fig. 1a) that produces potential wells (Fig. 1b). Negative  $\bar{p}$  in the outer well, when given enough energy to go over the central potential barrier, interact with positive  $e^+$  to form  $\bar{H}$  atoms mainly through three-body collisions.

The nested Penning trap was initially demonstrated with protons and electrons [11]. At LEAR in 1999,  $\bar{p}$  and  $e^+$  were confined in a nested Penning trap for the first time [12]. The  $e^+$  observably cooled the  $\bar{p}$ , demonstrating an interaction as needed to form  $\bar{H}$  atoms. Cold  $\bar{p}$  and  $\bar{H}$  physics continued at CERN's Antiproton Decelerator (AD), with evidence of  $\bar{H}$  formation in a nested Penning trap reported in 2002 [13–15].

The strength of the magnetic field determines how rapidly the charged particles cool via synchrotron radiation. Due to the  $\bar{p}$  mass, the radiation rate is too slow to be useful. In the 6 T field often used for precision measurements and for initial  $\bar{H}$  experiments, however, a  $e^+$  radiates into free space with a damping time of 0.1 s. As discussed in more detail below, the constraints introduced by superimposing a magnetic-minimum Ioffe trap on the Penning trap mean that the uniform field should not exceed about 1 T. In this field, the  $e^+$  radiation time (going as  $|B|^{-2}$ ) of 4 s increases the time it takes to manipulate  $\bar{p}$  and  $e^+$  to form cold  $\bar{H}$  atoms.

### 2.2. Ioffe traps for $\bar{H}$ confinement

Atoms in low-magnetic-field seeking states can be confined near a magnetic field minimum. A Ioffe trap [5] (sometimes called a Pritchard-Ioffe trap [16]) is a practical way to generate a confining field while

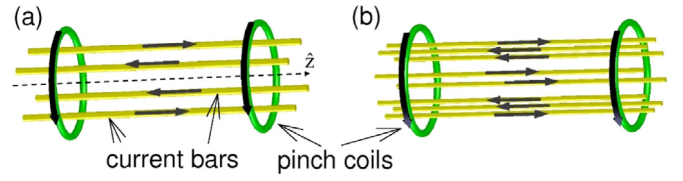


Fig. 2. The magnetic minimum at the center of quadrupole (a) and octupole (b) Ioffe traps are produced by  $2n = 4$  and  $2n = 8$  vertical current bars, respectively, plus orthogonal pinch coils.

maintaining a magnetic field at the minimum suitable for a Penning trap.

An idealized Ioffe trap (Fig. 2) is composed of two elements:  $2n$  current wires running parallel to, and spaced circularly around, the  $z$ -axis, and two current loops centered on the  $z$  axis and separated by a distance large compared to their diameters. Current runs in opposite directions in neighboring wires and in the same direction in the two loops, creating a magnetic minimum at the center. The total field can be written as  $\vec{B} = B_z \hat{z} + \vec{B}_\perp$ . The transverse magnetic field produced near the center of the trap in the  $z = 0$  midplane (in terms of cylindrical coordinates,  $\rho$  and  $\phi$ ) is

$$\vec{B}_\perp(\rho, \phi, z \approx 0) \approx B_R \left( \frac{\rho}{R} \right)^{n-1} (\cos(n\phi)\hat{\rho} - \sin(n\phi)\hat{\phi}). \quad (2)$$

A magnetic minimum is produced when  $2n = 4, 6, 8, \dots$ . The constant  $B_R$  is the field magnitude that corresponds to a radius  $R$  within the trap windings. Fig. 2 illustrates quadrupole ( $2n = 4$ , (a)) and octupole ( $2n = 8$ , (b)) arrangements.

The magnetic moment of a ground state  $\bar{H}$  comes primarily from the positron (with charge  $e$  and mass  $m$ ). This is essentially one Bohr magneton,  $\mu_B = e\hbar/(2m)$ . Near the center of the Ioffe trap, if the field from the distant pinch coils is neglected, the potential energy for a low-field-seeking, ground state  $\bar{H}$  would be

$$U(\rho, \phi, z \approx 0) = -\mu_B |\vec{B}_\perp(\rho, \phi, z \approx 0)| \quad (3)$$

$$= -\mu_B B_R \left( \frac{\rho}{R} \right)^{n-1}. \quad (4)$$

For a quadrupole,  $U \propto \rho$ . For an octupole,  $U \propto \rho^3$ . A later figure (Fig. 9) contrasts more realistic radial Ioffe fields with these idealized fields.

Interestingly, the motion of a trapped  $\bar{H}$  is integrable within a quadrupole Ioffe trap, but not within an octupole trap. The result is that the energy in the radial and axial motions within these traps is decoupled for a quadrupole trap, but coupled for an octupole, as shall be discussed soon in a report on simulations of  $\bar{H}$  motions in our traps. This difference persists in a realistic Penning-Ioffe trap, with consequences for how many lasers are required to cool all the motions of the trapped  $\bar{H}$ . Because the new trap featured in this work can produce fields of both symmetries, it allows other possibilities. A quadrupole trap with controllable addition of an octupole component, for example, could be used to control and manipulate charged particle loss and  $\bar{H}$  laser-cooling rates.

### 2.3. Nested Penning-Ioffe traps for $\bar{H}$ production and confinement

Obtaining trapped  $\bar{H}$  atoms requires the simultaneous application of charged and neutral particle traps [3] for producing and then confining  $\bar{H}$ . The properties of each type of trap are significantly modified by the presence of the other.

For charged particles confined in a Penning trap field  $B_0 \hat{z}$  and an axially symmetric trapping potential, conservation of energy and angular momentum together ensure that they remain confined indefinitely [17]. This changes when the Ioffe field gradient is superimposed to confine  $\bar{H}$  atoms. The Ioffe field  $\vec{B}(\rho, \phi, z)$  breaks the axial symmetry of the Penning trap, so charged particle confinement is no longer guaranteed [18]. Significant loss of  $\bar{p}$  and  $e^+$  can happen away from the

central axis, making it desirable to apply the trapping field quickly and for only a short time to minimize these losses. There is typically a radius outside of which the radial field of the Ioffe trap directs all charged particles into the trap walls [19]. An octupole field, with less field near the trap axis than a quadrupole, reduces charged particle losses [20] during the time required for  $\bar{H}$  formation.

For  $\bar{H}$  trapping, the Ioffe gradient field is modified by the vector addition of the spatially uniform Penning trap field, so the effective trapping potential energy is

$$U(\rho, \phi, z) = -\mu_B |B_0 \hat{z} + \mathbf{B}(\rho, \phi, z)|. \quad (5)$$

The vector sum with the uniform field increases  $U$  more at the trap minimum than at the perimeter, thus decreasing the overall trap depth. Our Ioffe trap coils are designed to make the strongest possible Ioffe field gradient that does not make the superconducting coils quench. With the strongest gradient fields that can be produced, the uniform field that can be added without significantly reducing the depth of the neutral particle trap is the  $B_0 = 1$  T that we use.

A realistic Penning-Ioffe trap introduces other variations that are difficult to calculate analytically. Infinitely extended current bars (e.g. Fig. 2) are not possible, of course. The same current is instead sent through all the current bars by connecting them to make “racetrack” coils (illustrated in Fig. 7.) These connections add to or subtract from the pinch coil field depending on the relative direction of the currents. Realistic pinch coils also cannot be far from the trap center. Finally, providing sideports for radial access makes it necessary to spread the octupole current bars in 4 locations near the trap center.

When  $\bar{H}$  trapping was reported in a quadrupole Penning-Ioffe trap [8] it was assumed that the realistic geometry for a quadrupole trap described above would make the particle trajectories within this trap non-integrable. This assumption was questioned based upon model simulations [21]. To check, we calculated and will soon publish  $\bar{H}$  trajectories for the strongest quadrupole Penning-Ioffe trap we have realized for our second generation trap. The trajectories remain remarkably integrable, despite the field modification due to the current return paths of the racetracks. It remains to be studied how adding small octupole fields changes this axial-radial coupling time.

### 3. First Penning-Ioffe trap

The ATRAP first generation Penning-Ioffe trap was used for a number of experiments ranging from producing  $\bar{H}$  atoms within such fields [7], to confining 5 trapped  $\bar{H}$  atoms per trial on average [8]. The design and construction of this trap, detailed in Ref. [6], are summarized here because of its initial importance, and to contrast it to the second generation trap which is the focus of the rest of this report.

The biggest technical challenge to the ATRAP Penning-Ioffe traps comes from their distinguishing feature: the design choice to have sideports that allow laser, microwave and atom beams to travel between the superconducting Ioffe windings and then through the electrodes of the Penning-Ioffe trap, traveling perpendicular to its central axis. The intent was to facilitate laser cooling along multiple axes (essential in a quadrupole Ioffe trap) along with providing more laser and microwave spectroscopy options. These sideports also made it possible to demonstrate both the laser-controlled production of Rydberg positronium [22, 23] and  $\bar{H}$  [24].

This first Penning-Ioffe trap (Fig. 3) utilized high-inductance Ioffe coils to minimize the current needed to produce the deepest practical  $\bar{H}$  trap. For comparison to the second generation trap to be discussed, Fig. 4 represents an exploded mechanical view of the first generation trap. A 1 T bias field for the Penning trap was produced by a persistent superconducting solenoid (outside the view of the figure) that stayed on continuously for many months at a time.

The Ioffe racetrack coils (2930 turns in 40 layers) and pinch coils (2558 turns in 36 layers each) were wound on titanium forms. The superconducting wire is type F54-1.35 from EAS (European Advanced

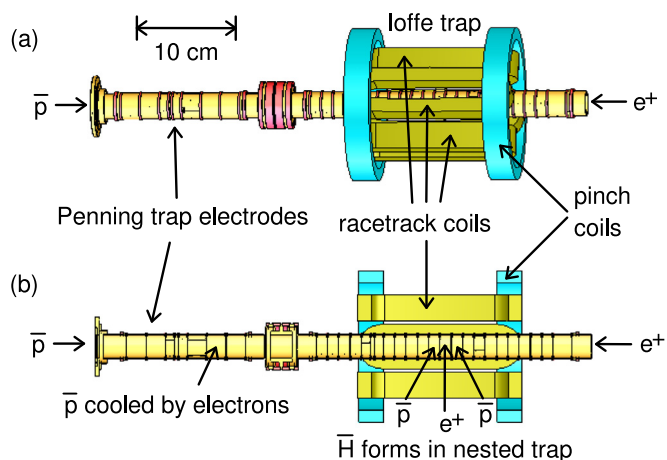


Fig. 3. A scale representation of the ATRAP first generation Penning-Ioffe trap. There is a spatially uniform magnetic field directed parallel to the trap axis that is produced by an external solenoid (not shown).

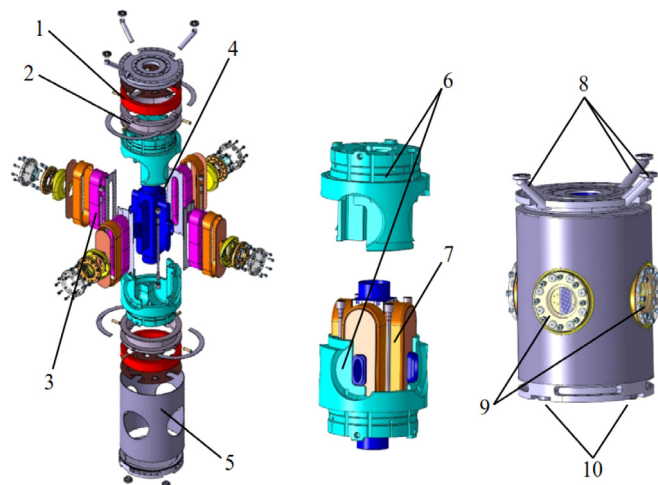


Fig. 4. Exploded view of the first generation Ioffe trap. Colors are used to distinguish components rather than signify material. The labeled parts are: 1. pinch coil; 2. winding form for pinch coil; 3. racetrack coil for quadrupole field; 4. winding form for racetrack coils (aluminum); 5. titanium vacuum vessel; 6. aluminum clamps for coil support; 7. aluminum rings for racetrack coil support; 8. connection ports, two for coil leads and one for an unobstructed path for boiled-off He gas; 9. radial access sideports; and 10. ports for LHe connection to the field-boosting solenoid mounted below the Ioffe trap. (For interpretation of the references to color in this figure legend, the reader is referred to the web version of this article.)

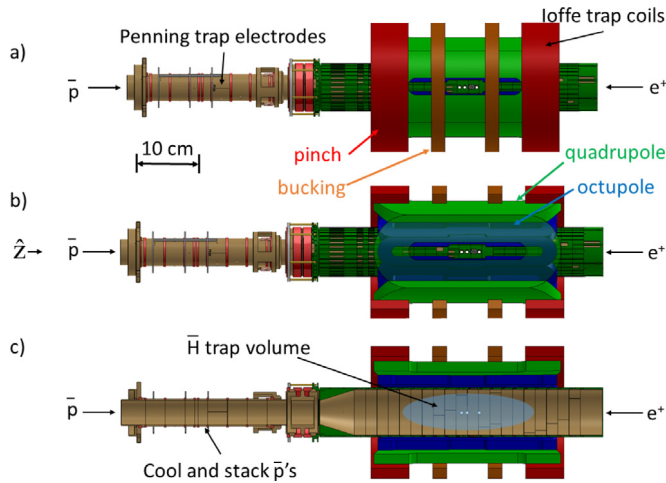
Superconductors). These wires have a copper diameter of 0.54 mm within which 54 NbTi filaments are embedded.

The windings were stabilized with aluminum clamps that contain the considerable stress produced within the energized coils. Detailed stress calculations characterized the shrinking during cooling and the strong Lorentz forces. To ensure a well defined pre-stress at the coils, final clamp dimensions were based upon coil dimensions that were measured to a precision of  $\pm 50$   $\mu$ m.

The exploded drawing in Fig. 4 shows the separate components of the system in the titanium housing which was welded to the coil form and the end plates after assembling. The components were manufactured at the Research Center Forschungszentrum Jülich (FZJ). The coil winding, assembly and some of the welding were carried out by ACCEL.

The large number of windings made it possible to use modest currents (compared to our second generation trap) to establish a magnetic trap. Just 80 A in each pinch coil and 68 A in the racetrack coil produced the deepest trap possible without quenching the superconducting





**Fig. 5.** Three scaled representations of the electrodes and coils of ATRAP's latest nested Penning-Ioffe trap. The electrodes are gold-plated copper, with insulation provided by either G10 sleeves (dark green in the figure) or Macor rings (light red). The Ioffe coil representations are colored to match the data plots. A spatially uniform magnetic field, directed parallel to the trap axis, is produced by an external solenoid outside the view of this figure. The central axis of the trap is defined as the  $\hat{z}$  axis, oriented to the right in the figure and upwards in the installed apparatus. (For interpretation of the references to color in this figure legend, the reader is referred to the web version of this article.)

windings. This trap was 0.56 T deep when a 1 T bias field was applied along the central axis of the trap. This corresponds to a 380 mK trap depth for an H atom in a low-field-seeking ground state.

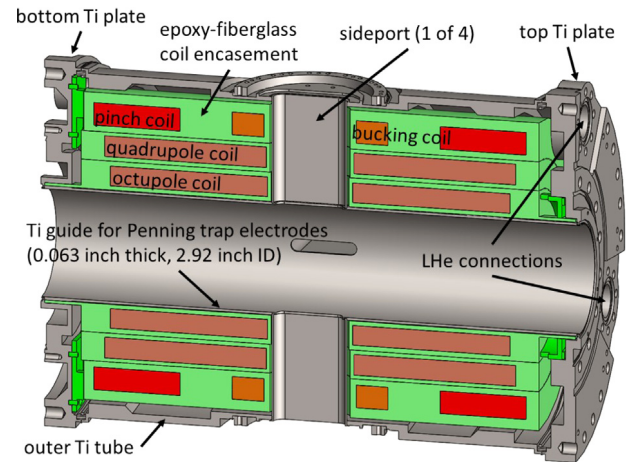
The high inductance due to the large number of windings caused significant experimental limitations. It took nearly 15 min to ramp the current up to the full field without triggering diodes that were installed across the coils to protect them from damage if their superconducting windings quenched. During this time the magnetic gradient caused substantial losses of  $e^+$  and  $\bar{p}$  stored in the nested Penning trap. The large inductance, along with the diodes, also made it impossible to ramp down the current faster than ten minutes. This time was much longer than desired in that cosmic rays triggered our detectors many times during the time over which trapped H atoms were released.

To get a faster turn off time, the coils were quenched deliberately in one of two ways. Either the windings were heated with a heat pulse applied to a resistor in a sideport or the current in a coil was increased past its critical current. Neither procedure is recommended for longevity, neither happens at a precisely controlled time, and a quench still did not turn off the trapping field in less than 1 s [8]. Also, it typically took the rest of an 8 h antiproton beam shift (and sometimes longer) before the trap had recovered enough to be re-energized for another trial.

As discussed in Section 2.3, an octupole Ioffe trap would reduce the rate of particle loss during  $\bar{H}$  formation. In addition, reducing the inductance of the coils would allow for faster turn-on and turn-off times. The primary goal of the second-generation trap design was to implement these improvements.

#### 4. Second generation design and construction

The positioning of the components of ATRAP's second-generation Penning-Ioffe trap are similar to the first, as illustrated by comparing Figs. 3 and 5. The section of the Penning trap electrodes devoted to cooling and stacking  $\bar{p}$  has identical dimensions to the first-generation, while the electrode design for the  $\bar{H}$  trapping volume was altered to optimize the  $\bar{H}$  trap depth given the field profile generated by the Ioffe coils. The field profiles are discussed in more detail in Section 4.2.



**Fig. 6.** Scale cross section of the Ioffe trap and its enclosure, with major components and features annotated.

##### 4.1. Ioffe coils

The principle design goal for the second-generation coils was to make the fastest possible charging and discharging times using very low inductance coils for the Ioffe trap, while maximizing the achievable trap depth [25]. To maintain compatibility with the existing dewar and Penning trap apparatus, many external properties of ATRAP's latest Ioffe trap are similar to those of the first. It is enclosed in a vacuum container that has the same outer dimensions as the first generation (Section 3), and it has similarly sized oval sideports to allow laser and potential microwave access into the center of the Penning-Ioffe trap (see Fig. 6). However, the internal Ioffe windings and the fabrication method are very different. In addition, this second-generation trap requires an external quench detection and current removal system to avoid the destruction of the coils.

Both trap generations utilized the same external superconducting solenoid (omitted from figures), which remains energized to 1 T for many months to provide a spatially uniform field along the central axis of the trap. An additional "loading solenoid" surrounds the lower electrodes of the Penning trap, also not shown in the figures. It temporarily boosts the axial magnetic field in the trap section where  $\bar{p}$  are initially loaded from 1 to 3.7 T, greatly increasing the  $\bar{p}$  loading efficiency. The larger field also allows the electrons, used to cool the  $\bar{p}$ , to lose energy via synchrotron radiation with a time constant of 0.4 s rather than 4 s. This loading coil is turned off during the time that antihydrogen atoms are produced and trapped.

The Ioffe windings are very different from those in the first generation trap. The use of many fewer windings gives the Ioffe coils a much lower inductance, as needed to inject and remove current much more rapidly. One consequence is that much higher current (up to 680 A) must be provided to achieve the same trap depth for H. Another consequence is that active quench detection and rapid external dissipation of the energy stored in the coils is required in order to protect the coils, as well as to allow removing the currents in tens of milliseconds. Two sets of racetrack coils make it possible to apply either quadrupole or octupole Ioffe fields. Bucking coils are added to make it possible to modify the central pinch coil field.

The winding patterns for the new racetrack coils are shown in Fig. 7. Fig. 7a is a cross section of the winding patterns in the midplane. The  $\otimes$  and  $\ominus$  signs indicate the relative current directions. Fig. 7b shows an unwrapped view of the windings.

The quadrupole windings are outside the octupole windings because a quadrupole field falls off less rapidly with radius than does an octupole. They include 744 "vertical current bars". These are implemented as 4 layers of 56 superconducting wires, 4 layers of 62 wires

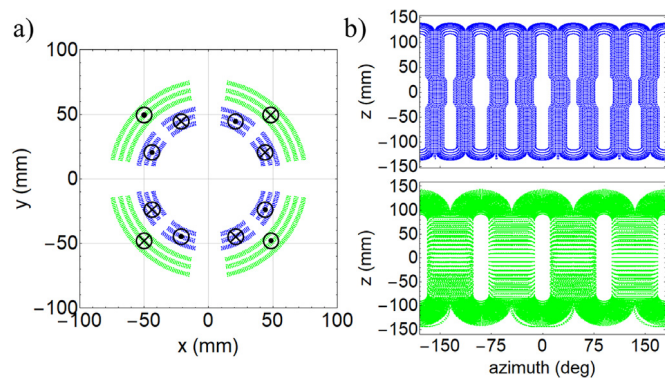


Fig. 7. (a) Cross section of the coil winding patterns for the racetrack coils. The green outer set is the quadrupole coil, the blue inner set is the octupole coil. (b) Rolled-out views of the octupole (top) and quadrupole (bottom) winding patterns. (For interpretation of the references to color in this figure legend, the reader is referred to the web version of this article.)

and 4 layers of 68 wires. The vertical current bars are connected by the rounded contours shown in the figure. The 4 sideports fit between the quadrupole windings.

The octupole windings, inside the diameter of the quadrupole windings, include 216 “vertical current bars”, implemented as 4 layers of 16 wires, 4 layers of 18 wires, and 4 layers of 20 wires. Near the midplane of the trap the wires are spread in four locations to make room for the sideports.

The pinch and bucking coils are at a radius larger than that of the octupole and quadrupole. They are closer to the center of the trap than are the connections between the vertical current bars. The pinch coil has 988 turns, with 13 layers of 38 turns in its upper section being duplicated in its lower section. Similarly, the bucking coil has 364 turns, with upper and lower sections each of which has 13 layers of 14 turns. In both coils the two sections are joined such that the current goes in the same azimuthal direction in each section.

The advantage of the lower inductance is that it makes it possible to turn off the neutral particle traps a hundred times more rapidly — essentially between the dark counts produced by cosmic rays that trigger the annihilation detectors used to tell us that a  $\bar{p}$  has annihilated when an  $\bar{H}$  atom is released from the trap. This trap turns off rapidly enough that most  $\bar{H}$  will be released within 25 ms. This is a big improvement on the 10 min design value and 1 s deliberate-quench deenergization time for the first generation trap.

A related advantage is that the lower inductance makes it possible to bring Ioffe coils to full current in a time reduced 10-fold compared to that required by the first generation. This was intended to speed the study of trapped antihydrogen generally. It was also intended to reduce the losses of trapped antiprotons and positrons that occur before antihydrogen forms, and hence increase the amount of trapped antihydrogen.

A low inductance nested Penning-Ioffe trap for antihydrogen atoms poses significant technological challenges. Many hundreds of amperes of current not only flow in the superconducting wires of the Ioffe coils, but these large currents are turned on and off very rapidly. Great mechanical stability is required because of the large and impulsive forces between the windings. For example, calculations performed by the manufacturer (Advanced Magnet Lab, AML) during the design phase indicated that, with the pinch and bucking coils at full current, they would repel each other with a force of about 7200 N.

To achieve the required mechanical stability, a direct-wind construction method was employed by AML in the fabrication. Fig. 8 shows how the racetracks were fabricated. The Ioffe windings were set by hand into grooves machined into a G-10 epoxy fiberglass tube (a) and the windings were then epoxied into the grooves (b). A new layer of

Table 1  
Inductances in H and resistance in ohms, measured at 300 K.

	$L$	$L_1$	$L_2$	$M$	$R_s$ (300 K)
Octupole	0.019	0.0060	0.0065	0.0032	31
Quadrupole	0.113	0.037	0.030	0.0229	53
Pinch	0.107	0.052	0.051	0.0021	9.4
Bucking	0.020	0.0087	0.0087	0.0012	3.4

epoxy fiberglass was then fabricated over these windings, grooves were cut into this new layer, and more wires were deposited and epoxied.

The octupole and quadrupole windings are made with round superconducting wire with a 0.85 mm diameter and a 0.9:1 cross-sectional ratio of copper to NbTi (Supercon 56S53). The pinch and bucking coils are wound using rectangular wire that is 1.576 mm by 1.052 mm, including formvar varnish insulation that is 0.035 mm thick. The cross-sectional ratio of copper to superconductor in this wire is 2.7 to 1.

Since the wires are insulated from each other, the inductance values (see Table 1) can be measured at room temperature to several percent using a standard inductance bridge using a low frequency AC signal (1 kHz). At room temperature the current flows through the copper of the wire, while at 4 K the current flows through the superconducting strands within the copper. This variation within the small wires should not greatly affect the inductance that is measured.

The inductance of each half of the coil, with respect to a roughly centered tap attached to the coil, is similarly measured. The mutual inductance between halves of each coil is determined by the measurements of  $L$ ,  $L_1$  and  $L_2$  using

$$M = \frac{1}{2}(L - L_1 - L_2). \quad (6)$$

The series resistance is only useful as a room temperature diagnostic, since it goes to zero when the wires become superconducting at 4 K.

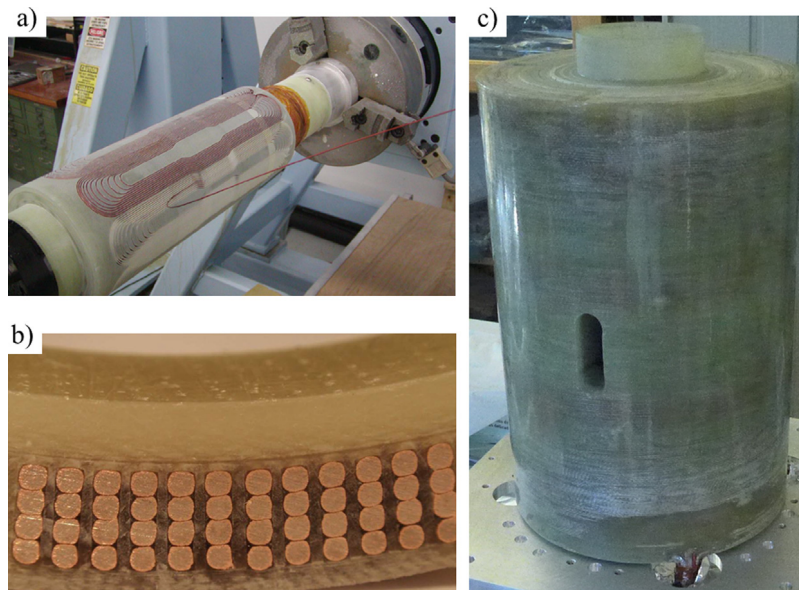
The superconducting Ioffe coils are connected vertically up to room temperature current leads though conducting sections. The superconducting wires of each coil are soldered to bus bars, 62 cm long, that are thick copper conductors between which strips of high temperature superconducting tape (American Superconductor BSCCO) are sandwiched.

As long as any length of the bus bar remains immersed in 4 K liquid helium, the copper part of the bars will keep the superconducting tape below its critical temperature. This tape can typically carry 110 A of current at 77 K, in the absence of a background magnetic field. They are mounted in orientations that minimize the component of the background 1 T field perpendicular to the tape, which would otherwise limit the critical current. The other end of each bus bar is connected to a vapor cooled lead (VCL) that extends out of the dewar to a room temperature connection. Cold helium vapor is directed through channels in each VCL to keep heating from increasing both their resistance and their power dissipation for a given current. The bus bars and VCLs are custom assemblies manufactured by Cryomagetics Inc.

#### 4.2. Equipotentials for ground state $\bar{H}$

The equipotentials of Ioffe traps are surfaces of constant  $U$ , which is equivalently a constant magnitude for the vector sum of the spatially uniform bias magnetic field and the magnetic field from the Ioffe windings (see Eq. (5)).  $\bar{H}$  and  $H$  atoms have a magnetic moment of 1 Bohr magneton,  $\mu_B$ , and the corresponding potential energy of low-field-seeking atoms is  $-\mu_B \vec{B}$  with respect to the magnetic minimum. Because the energies are so small, we divide by the Boltzmann constant ( $k$ ) to represent them in mK temperature units:  $\mu_B/k = 672$  mK/Tesla.

In what follows, the equipotentials for the deepest symmetric octupole and quadrupole traps that have been achieved so far are illustrated. By “symmetric trap” we mean that we have chosen to make the



**Fig. 8.** The Ioffe windings were set into grooves machined into a G10 epoxy fiberglass tube (a) and then epoxied into those grooves (b, cross section of a test piece). The end result is a solid epoxy-fiberglass structure with embedded Ioffe coils, featuring an open tube in its central axis for Penning trap electrodes, 4 radial slots for sideports, and small channels between coil layers to improve LHe cooling (c).

**Table 2**

Ioffe coil currents in A for the deepest symmetric Penning-Ioffe traps realized in the presence of a 1 T bias field.

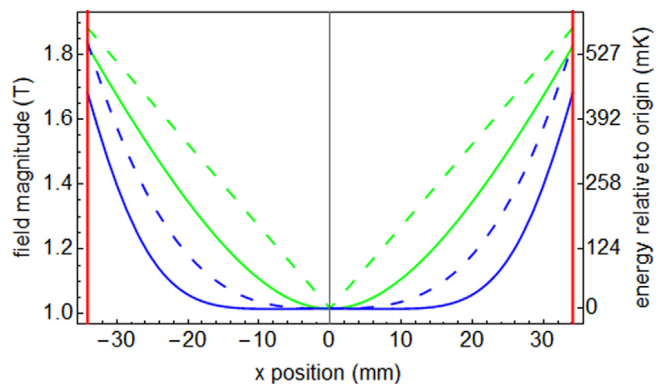
	Octupole coil	Quadrupole coil	Pinch coil	Bucking coil
Octupole trap	680	0	210	-179
Quadrupole trap	0	470	310	-264

axial well depth equal to the radial well depth (which is determined by the field strength at the inner surface of the trap electrodes). The currents for these traps are listed in Table 2. The Penning-Ioffe traps include a 1 T bias field directed in the  $-\hat{z}$  direction. These maximum currents, established by repeated trials with higher and higher currents, are the highest for which robust operation was achieved without quenching.

The field profile in the midplane of the Penning-Ioffe trap, perpendicular to its axis, is shown in Fig. 9. The axial well for  $\bar{H}$  atoms along the  $z$ -axis is shown in Fig. 10. Because of the vector addition of the bias field and the field from the pinch and bucking coils, the potential energies of the Penning-Ioffe traps do not manifest the  $\rho$  or  $\rho^3$  shape discussed earlier (the dashed curves in the figure). They vary instead approximately as  $[1 + (B_R/B_0)^2 (\rho/R)^2]^{1/2}$  or  $[1 + (B_R/B_0)^2 (\rho/R)^6]^{1/2}$  under the assumption that the net axial field at the center from the pinch and bucking coils is very small.

Fig. 11 shows the equipotential energy contours for the symmetric quadrupole and octupole traps. A notable feature of the equipotentials is the lack of symmetry above and below the center of the trap along the trap axis. This may at first seem surprising given the symmetry of the coils. This asymmetry arises primarily because the bias field that points in the  $-\hat{z}$  direction is added to the field produced by the current-bar connections at the top and bottom of the trap. The direction of the current in these connecting segments alternates from one bar to the next, so this part of the trap asymmetry reverses with the rotational symmetry of the coils. For example, the contours in the quadrupole trap in the  $yz$ -plane are the mirror image (reflected over  $z=0$ ) of those in the  $xz$ -plane.

The vertical current bars for the octupole are slightly distorted near the center of the trap to accommodate the four side windows. The result (notable in Figs. 10 and 11a) is an axial shift in the location of

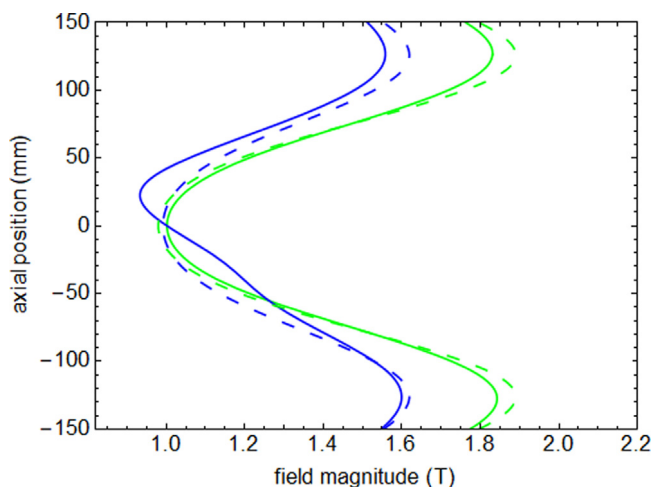


**Fig. 9.** The field magnitude and potential energy at  $z = 0$  for an  $\bar{H}$  atom near the center of the ATRAP quadrupole (green) and octupole (blue) Penning-Ioffe traps with a 1 T bias field. Dashed curves are  $|x|$  and  $|x|^3$  dependencies for comparison. The red lines are at the inner radius of the Penning trap electrodes. (For interpretation of the references to color in this figure legend, the reader is referred to the web version of this article.)

the shallow 7.5 mK deep toroid that contains the circle of minimum magnetic field. The toroid field minimum for the octupole trap with side windows has its minimum magnetic field about 15 mm off axis at a height that differs by 3 mm from that of the minimum field on the central axis, which itself is displaced from the geometric center of the Ioffe trap by about 22 mm. A set of laser access holes in the Penning trap electrodes are positioned to allow a laser to address  $\bar{H}$  located in the toroidal trap minimum.

Of particular interest are the 2.5 mK contours near the center of the trap (see Fig. 11). Laser cooling via the 121 nm transition between the 1s and 2p levels of antihydrogen and hydrogen has a cooling limit of about 2.5 mK. After optimal laser cooling, the  $\bar{H}$  stored in the trap should be mostly within that contour. For the octupole case, this inner contour is a torus as a result of the relative magnitudes of the radial components of the octupole and pinch coils. The shape and position of this 2.5 mK “equipotential” can be modified somewhat by increasing the field from the pinch and/or bucking coils.





**Fig. 10.** The field magnitude on the  $z$  axis for quadrupole (green) and octupole (blue) Penning-Ioffe traps with a 1 T bias field. The dashed lines are calculations for idealized versions of the windings (without sideports or connections between current bars). (For interpretation of the references to color in this figure legend, the reader is referred to the web version of this article.)

### 4.3. Vacuum enclosure

In addition to their effect on the octupole trapping potential, the four sideports (Fig. 6) also add to the challenge of constructing a vacuum enclosure (Fig. 12) around the G10 winding assembly. The enclosure separates three different volumes: the exterior insulating vacuum, the trapping volume in the central bore, and the volume to be filled with liquid helium to keep the NbTi wires of the Ioffe coils at 4 K.

The first attempt (pictured on the left of Fig. 13) was a mixed-material vacuum enclosure: top and bottom aluminum plates with welded-in bi-metal CF flanges (Atlas Technologies), epoxied to G10

components comprising the outer cylinder and sideport tubes. Copper rings were epoxied outside the sideports for use in forming the indium seals for the flanges that would separate the trap vacuum from the insulating vacuum. One advantage of using an insulator for the central parts of the vacuum enclosure was that the rapid changes in the Ioffe trap magnetic fields could not produce the substantial eddy currents that would flow in a metal system. Eddy currents are difficult to calculate, and they can modify both the time structure and the spatial distribution of the fields that the coils produce. Another advantage was that the Penning trap electrodes could be mounted against the G10 of the Ioffe trap bore without risk of shorting to ground as would happen if the electrodes contacted a metal enclosure.

After several attempts at cooling down the apparatus with the G10 vacuum enclosure installed resulted in cracked epoxy joints and thus leaks from the liquid helium space into both the insulating vacuum and the trap vacuum, the enclosure was redesigned to use metal components welded around the G10 block of coil windings. Stainless steel was considered since its resistivity remains high even at cryogenic temperatures, damping the eddy currents produced by rapid changes in the Ioffe trap's magnetic field. However, even the nominally non-magnetic alloys have some residual magnetism, and more can develop over time due to cyclic stresses of the sort expected to accompany thermal cycling between 300 K and 4 K. There was a concern that this residual magnetism would limit the achievable precision of antihydrogen spectroscopy in ATRAP.

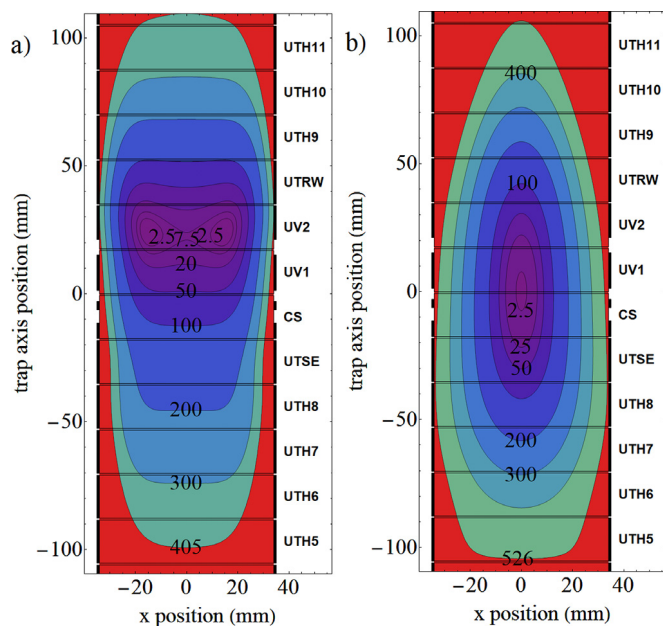
In order to avoid the drawbacks of stainless steel, the possibility of using titanium (Ti) alloys was investigated, specifically grade 5 (6% Al, 4% V), grade 6 (5% Al, 2.5% Sn), and grade 9 (3% Al, 2.5% V). Ti alloys are stronger than pure Ti, making it possible to use less material between the Ioffe coils and the interior volume of the Penning traps. The additional material between the winding assembly bore and the Penning trap electrodes requires the electrode radius (and thus the magnetic trap depth) to be reduced accordingly, so a thinner wall for the bore of the vacuum enclosure means a deeper  $\bar{H}$  trap.

Alloys (unlike pure Ti) also maintain a substantial resistivity as they cool to cryogenic temperatures. Material research for cryogenic use led to the development of the extra-low interstitial (ELI) varieties of grades 5 and 6. Interstitial elements (impurities such as oxygen, nitrogen, and carbon) strongly affect the tensile properties of titanium alloys at low temperatures, and can make them prone to brittle fracture. While it is not commonly used in cryogenic systems, the impurity levels for grade 9 titanium are below the limits of the grade 5 ELI specifications; it should be equally unlikely to become brittle at 4 K.

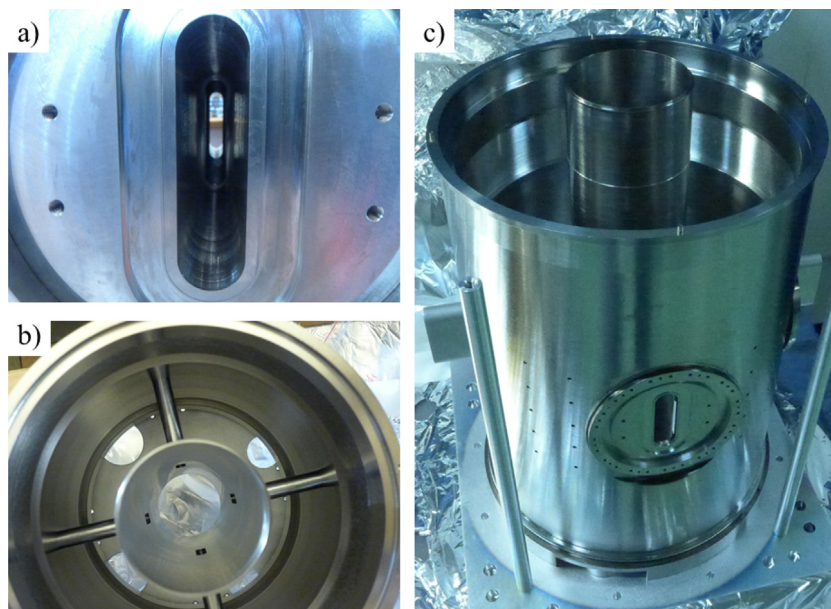
A superconducting enclosure could unacceptably distort the magnetic field of the Ioffe trap in a way that would be difficult to precisely calculate or measure. With a concern that some of the titanium alloys, due to their vanadium content, would become superconducting at 4 K, those under consideration were tested using a SQUID magnetometer (Quantum Design MPMS XL) at Harvard's Laukien-Purcell Instrumentation Center. Magnetization curves at 3.5 K and 4.2 K were obtained for samples of each alloy.

At 4.2 K, all three grade 5 samples generated the familiar magnetization curve of a type-II superconductor. The grade 6 and grade 9 samples, on the other hand, appeared simply to be paramagnetic. At 3.5 K, the grade 6 sample still showed no sign of superconductivity. However, a small, repeatable feature appeared near zero field in the magnetization curve for the grade 9 sample.

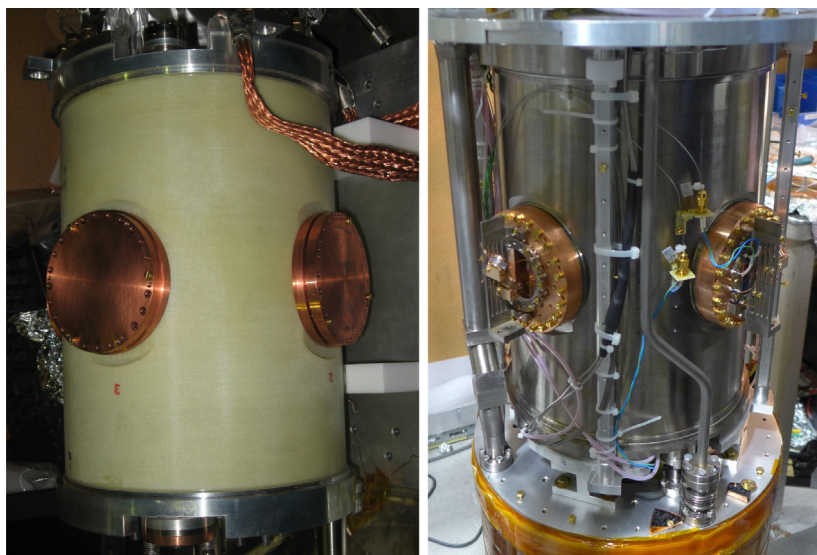
While grade 6 titanium outperformed the other two alloys in the magnetometer tests, due to difficulty sourcing an appropriate amount with material certifications, grade 9 was chosen instead. Five pieces of grade 9 Ti stock were obtained. Samples from the same piece of titanium had similar magnetization curves, but there were significant differences between samples from different pieces. In particular, four of the five samples taken behaved as superconductors at 4.2 K, although critical fields and critical temperatures (measured at 25 Oe) varied. Even so, the 4.2 K critical field for each piece was comfortably less than the minimum field that piece would see during normal operation.



**Fig. 11.** Energy contours in mK for the ATRAP octupole trap (680 A octupole, 210 A pinch, -179 A bucking) (left) and for the ATRAP quadrupole trap (470 A quadrupole, 310 A pinch, -264 A bucking) (right).  $\bar{H}$  atoms with energy below the 2.5 mK laser-cooling limit would be within the lowest energy contour. Labels along the right are the names we assigned to the individual Penning-trap electrodes.



**Fig. 12.** (a) Sideport oval with view through the Ioffe trap. The oval access to the center is 8.9 mm wide and 45.7 mm high. (b) Test assembly of the enclosure components showing the sideport tubes connecting the outer cylinder to the inner cylinder. (c) The vacuum enclosure partway through the welding process. An aluminum jig inserted through the sideport holes ensures the inner and outer cylinders are properly aligned during e-beam welding.



**Fig. 13.** A G10 epoxy fiberglass enclosure (left) and a Ti enclosure (right), both designed to contain the liquid helium that cools the Ioffe trap coils within the enclosures. The picture of the titanium enclosure also features sideport flanges with windows and mirrors for sending laser light through the trap radially.

The raw materials were machined in the Harvard shop according to the designs we provided. The finished components and the G10 coil winding assembly were then brought to Joining Technologies, who used electron-beam welding (performed in a vacuum chamber) to join the pieces of the titanium enclosure together. Fig. 14 shows the locations of the e-beam welds. Temporary clamps, also pictured in the photos in the figure, positioned the pieces for welding. Additional aluminum heat sinks were included to prevent heat damage to the G10 block encasing the Ioffe coils. Avoiding heat damage during welding was challenging given that a precise alignment of the Ioffe coils with the enclosure required contact between the titanium and G10. Additional challenges due to the presence of sideports included implementing a precise rotational register to ensure the G10 sideport holes align with the titanium sideport tubes, and performing the internal welds connecting the 4 sideports to the central tube since the

electron beam had to be directed into the small sideports from the outside.

Due to the layer of titanium in the central bore, the octupole trap depth is 20% lower than would have been possible with a G10 enclosure, and the quadrupole trap is 10% lower. To date the grade 9 Ti vacuum enclosure (pictured on the right of Fig. 13), as part of ATRAP's antihydrogen apparatus, has been successfully cycled between 300 K and 4 K eight times and has spent 67 weeks total at 4 K.

#### 4.4. Electrical circuit

Each coil in the Ioffe magnet is part of a larger circuit designed to meet the requirements of our antihydrogen program: fast ramp-ups to energize the trap, fast removal of current on-demand to release trapped  $\bar{H}$  quickly, and fast removal of current in the case of a detected quench of the coils. Fig. 15 shows a schematic including all of the components



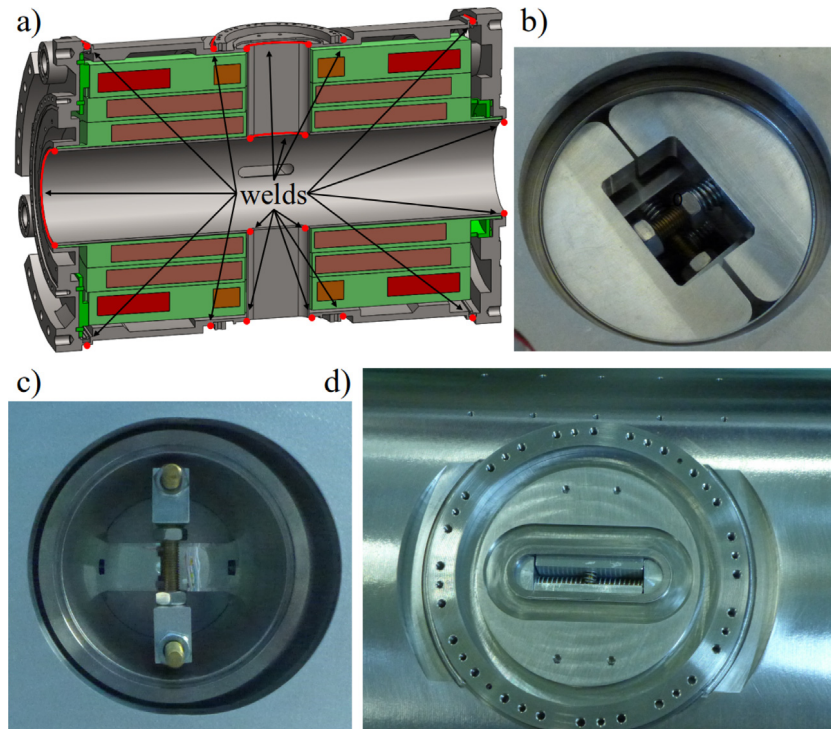


Fig. 14. A diagram of the e-beam weld locations. Red dots indicate where the cross section of the model cuts through the side of an e-beam weld, and red curves follow the weld path where visible from this angle (a). The photos show several of the heat sinks used to avoid heat damage to the G10 encapsulating the coils, located at the inner bore by an endplate (b), the interior of the sideports (c), and the exterior of the sideports (d). Good thermal contact between the titanium and the aluminum was maintained via pressure provided by threaded rods and nuts and/or springs.

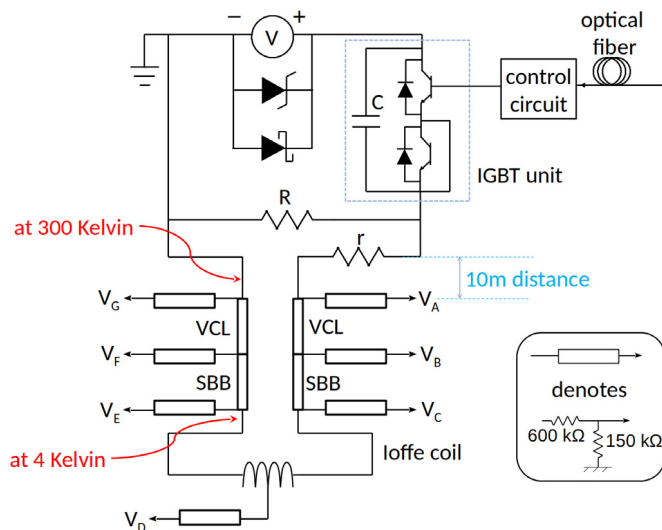


Fig. 15. Schematic of a coil electrical circuit, consisting of a room-temperature power supply, IGBT and dump resistor connected to a 4 K Ioffe coil through vapor-cooled leads (VCL) and superconducting bus bars (SBB). Tap voltages ( $V_A, \dots, V_G$ ) pass through the first stage of voltage dividers shown and are further reduced and monitored at room temperature.

of a coil's circuit. There is one such circuit for each coil, with the power supply configuration and the value of the parallel resistance differing depending on the properties of the particular coil.

The power supplies used are HP model 6681A (standard configuration 8 V and 580 A). The pinch and bucking coil circuits use one each, while the quadrupole coil circuit uses a supply configured for 7 V and 650 A. Two 6681A supplies wired in parallel provide the current for the octupole coil. To protect against both forward and reverse voltages,

transient voltage suppression diodes and Schottky diodes are placed in parallel with the power supplies.

When the IGBT (insulated-gate bipolar transistor) unit is enabled, current flows from the positive terminal of the power supply through the upper transistor in Fig. 15. This unit (Semikron SKiiP 1513GB172-3DL) is integral to the capability to remove the current quickly, being both fast-switching ( $\mu\text{s}$  scale) and rated for both high currents and high voltages. The high-current capability is necessary for steady-state operation. When the switch is opened to dump the current, the IGBT unit must be able to survive the resulting inductive voltage spike as well. A capacitor in parallel with the transistors prevents charge pileup and potentially damaging voltage spikes immediately following the opening of the IGBT. While the IGBT units themselves are rated for 1700 V, the capacitors are only rated for 1100 V.

A dump resistor (labeled R in Fig. 15) wired in parallel with the magnet coil dissipates the energy stored in the coil when the IGBT opens. These dump resistors were constructed by machining 1/8"-thick stainless steel sheets to make long path lengths from one terminal to the other, then combining sheets to reach the desired resistance (see Fig. 16). The voltage spike generated when the current is removed from the coil is a function of the coil inductance, the initial coil current, and the resistance of the dump resistor. For each coil, a dump resistor was built such that the peak voltage when the coil starts at maximum operating current will be safely less than the 1100 V rating of the IGBT unit's capacitor. The measured values of R and C are listed in Table 3. These values, along with the inductances in Table 1, are used to calculate the time constants in Table 4.

Ten meter long copper wires, size 700 kcmil (about 350 mm<sup>2</sup> cross section, 520 A ampacity) are used to carry current from the output of the IGBT unit to the antihydrogen apparatus and back to the power supply. Since the maximum operating current of the octupole coil is 680 A, two sets of these wires are used for the octupole, one from each of the parallel power supplies (see Table 4).

The wires end at a junction box near the apparatus. There, they connect to flexible copper-braid straps (Storm Power Components'

**Table 3**  
Resistance and capacitance values used in the coil electrical circuits.

	$R$ ( $\Omega$ )	$C$ (F)
Octupole	1.17	0.00159
Quadrupole	1.99	0.00159
Pinch	3.94	0.00164
Bucking	1.90	0.00158

FlexBraid series) to make low-strain connections to the antihydrogen apparatus. Each pair of wires to and from the octupole supplies connect to a strap rated for 900 A. The quadrupole straps are rated for 600 A, and those for the pinch and bucking coils are rated for 470 A.

These high-current straps are bolted to copper flags at the top of the antihydrogen apparatus. These flags are in turn clamped to the ends of the appropriate vapor-cooled lead (VCL) which carries the current down into the cryogenic space where it passes through HTS busbars and on into the superconducting magnet coils, as described in detail in Section 4.1.

#### 4.5. External protection circuit

A “quench” of a coil occurs when a small part of the superconducting wire transitions to the normal-conducting state. The high current running through the non-zero resistance of this section of wire causes heating, which results in the surrounding wire becoming normal as well. This chain reaction has the potential to produce temperatures that would damage the magnet. The appearance of a small section of resistive wire is accompanied by a voltage drop, which is used to diagnose the beginning of a quench and trigger current removal before damage can occur.

To monitor voltage drops across several sections of the cryogenic part of the coil circuit, wires are soldered to each of the junctions to act as voltage taps. As shown in Fig. 15, one is located at the top of each VCL (A and G), one where each VCL connects to a busbar (B and F), and one where each busbar connects to the magnet coil (C and E). The magnet manufacturer (AML) provided a voltage tap for each coil, connected to the center of the winding (tap D). Our detection system is designed to be most sensitive to a difference in the voltage drop between each half of a magnet coil, which would arise if a section of one half of that magnet coil became normal-conducting. This is preferable to looking for a change in the voltage drop over the entire magnet since it precludes the need to lower the sensitivity of the protection system while energizing a coil. While charging the magnet induces a voltage over the full coil, it is symmetric between halves of the coil and thus would not trigger the protection system (unless a quench occurs while charging).

Voltage taps B through F are located in the cryogen space, so their signal must pass through an electrical feedthrough. To prevent high voltage on these taps from causing an arc between feedthrough pins, the tap voltages first pass through a five-fold voltage divider. Taps A and G are divided down externally before being passed to the quench protection electronics along with the others.

The taps are continuously monitored by quench-protection electronics for voltage drops that exceed user-defined thresholds. When that threshold is exceeded, these electronics switch a TTL output, send a signal through the optical fiber in Fig. 15 to open the IGBT, and send an output-disable signal to the power supply. This system also has TTL inputs to allow the current to be dumped on command in  $\bar{H}$  trials. The TTL output level is monitored by a voltage tap datalogger and our particle detector electronics. By including the TTL output state in the particle detector data, the times of detected events can be synchronized with the state of the neutral particle trap.



**Fig. 16.** Resistor constructed from layers of thin sheets of stainless steel, housed in a 1U rack-mount case. The resistor sheet is 12.25 inches wide and 20 inches deep.

**Table 4**  
Deduced time constants of the Ioffe circuits, as well as the ratio of the inductive voltage drop over the “halves” of each coil on either side of the central voltage tap  $V_D$ .

	$\tau_{LR}$ (s)	$\tau_{RC}$ (s)	$V_1/V_2$
Octupole	0.016	0.0019	0.95
Quadrupole	0.057	0.0032	1.14
Pinch	0.027	0.0065	1.01
Bucking	0.010	0.0030	1.00

#### 4.6. Automated liquid helium fill system

The liquid helium capacity in the second-generation Penning-Ioffe trap is roughly 40 L. Due to the heat load from the presence of 10 VCLs (8 for the Ioffe trap, 2 for the field-boosting solenoid that assists in catching  $\bar{p}$  shots from the AD), the boil-off rate is about 8 L/h. In order to remain at 4 K continuously without requiring manual LHe transfers every 5 h, a system for automatically filling the trap from a 500 L-capacity storage dewar was installed. This reduced the need for manual intervention to one hour every two days.

With a flexible transfer line semi-permanently in place between the transfer dewar and the trap, the autofill system controls the rate of LHe flow into the trap by adjusting the pressure differential between the two. If the level in the trap becomes too low, the control software induces more LHe to flow through the transfer line by reducing the helium pressure in the trap and increasing the pressure in the dewar. Similarly, if the level rises above a desired limit the control software stops the LHe flow by releasing the pressure from the dewar.

This system also gives control over the helium exhaust flow rate through each of the 15 ports on the trap. With prudently selected flow rates, the dewar-trap pressure difference can be balanced well enough to remain within a 5 L-wide control band for the trap LHe level. The flow controllers also allow most of the helium exhaust to be forced to pass through the appropriate VCLs during Ioffe trap operation. This is essential to prevent the VCLs from overheating while carrying up to 680 A of current.

### 5. Ioffe trap operation and performance

Over the course of several years of operation, the second-generation ATRAP Ioffe trap has been operating close to its design specifications. This operational performance starts with the ability to energize the trap much more quickly than was possible with the first-generation Ioffe trap. Multiple diagnostic systems were implemented to ensure that the currents were behaving as expected and that the magnetic fields

generated match those calculated based on the measured currents. The quench-detection system was tested prior to each operational period and was demonstrated to successfully detect and appropriately respond to quenches, and the rapid-switching IGBT circuit (Fig. 15) drained the energy from the magnet coils before the quench could proceed far enough to cause damage.

### 5.1. Energization

As discussed in Section 4, the second-generation Ioffe trap was designed to have a lower inductance to enable faster energization and de-energization than was possible with ATRAP's first-generation trap. Once the IGBT is past the threshold voltage that allows current to flow, the overall behavior of the circuit can be modeled using the simplified circuit shown in Fig. 17.

The charging procedure operated under the assumption that a smooth ramp to the desired current would be less likely to result in a quench. So, to energize a coil the power supply voltage was always raised to just over the threshold at which current began to flow. Once it was at that point the simplification in Fig. 17 is valid since the IGBT begins to act like a short, aside from reducing the voltage drop over the inductor and resistor by the IGBT threshold voltage. Increasing the power supply voltage in one step to that required for the desired current then results in a smooth exponential ramp up to the operating current.

Given the features of the charging circuit, the current should change with time as

$$I = \frac{V_{PS} - V_{th}}{r} (1 - e^{-tr/L}), \quad (7)$$

where  $r$  is the resistance of the leads in series with the coil,  $L$  is the inductance of the coil,  $V_{PS}$  is the power supply output voltage, and  $V_{th}$  is the effective IGBT threshold voltage.

For the purpose of predicting the time dependence of ramps to high current, the effective IGBT threshold is taken to be the point at which a linear fit to the power-supply voltage vs. steady-state output current intersects the abscissa (see Fig. 18). Since the IGBT output is not linear at low voltages, the low-current data is excluded from the fit that gives the effective threshold values and lead resistances in Tables 5 and 6. The lower voltages at which the no-current to small-current transition occurs are shown in a separate column.

One can see ringing in the octupole and bucking coil ramps in the example data shown in Fig. 19. This ringing is also present in the typical pinch and quadrupole ramps, but not visible in Fig. 19. The ringing is due to setting the power supply voltage to a value higher than is necessary to reach the set current. Once the power supply reaches the set output current, it overshoots somewhat and switches to constant-current mode whereupon the output rings down to the set value.

There are two advantages to setting the voltage to overshoot the set current. The first is that the coil can reach a steady output at the set current more quickly than it would through an exponential ramp that has just enough voltage to reach the desired current. The second is that it allows the power supply's internal control circuit to keep the output current constant without intervention from our DAQ computer. As these coils stay energized, the high-current leads begin to warm up, increasing the resistance and thus the voltage necessary for a constant current. Since the power supply voltage during the ramp-up is set to be higher than initially needed, the power supply internal control circuit can adjust the output voltage upwards to compensate.

Fig. 20 shows reasonable agreement between the prediction of Eq. (7) (using the data from Tables 5 and 6) and the coil ramps. One can see that the agreement with the higher inductance coils is better than for the low-inductance ones. These ramp predictions are very sensitive to the value of the lead resistance  $r$  – if  $r = 0.0034 \Omega$  is used for the octupole instead of the table value of  $0.0036 \Omega$ , the predicted plot would very closely match the ramp data.

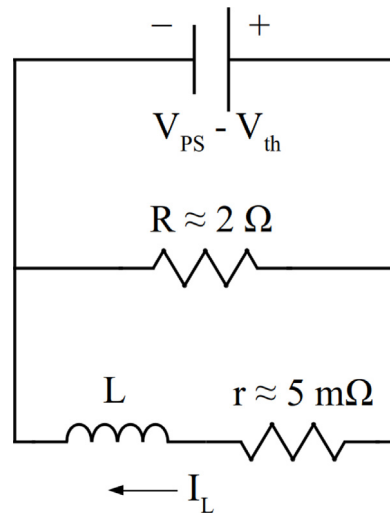


Fig. 17. The effective circuit for charging each Ioffe coil.

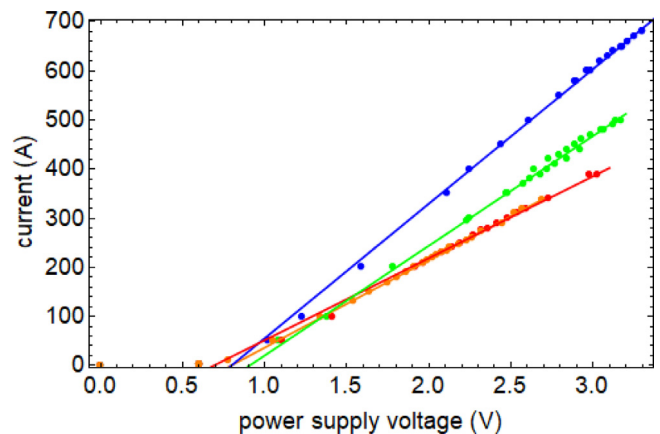


Fig. 18. The measured supply voltage and output current show the IGBT threshold and the series resistance for octupole (blue), quadrupole (green), pinch (red) and bucking (orange) coil circuits. (For interpretation of the references to color in this figure legend, the reader is referred to the web version of this article.)

Table 5

Voltage thresholds of Ioffe circuits. The effective threshold is where the linear portion of the  $I/V$  curve would cross zero, and the current threshold is where current begins to flow through the IGBT.

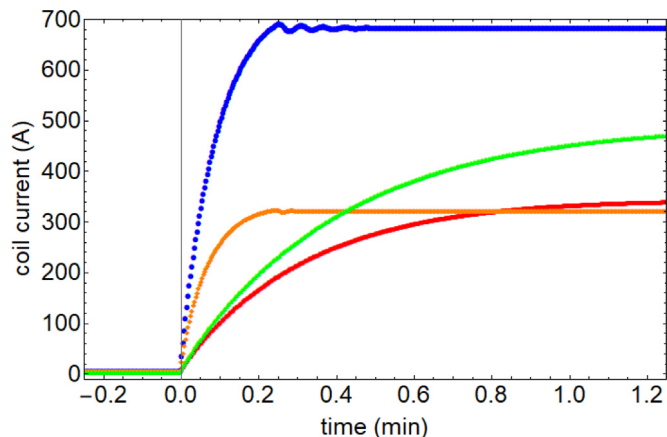
Coil	Eff. thresh., $V_{th}$ (V)	Curr. thresh. (V)
Octupole	0.80	0.51
Quadrupole	0.91	0.48
Pinch	0.69	0.46
Bucking	0.80	0.46

Fig. 21 shows the coil currents during an energization of the full octupole trap (the set of currents in Table 2). By energizing the coils in the order shown, the aim was to minimize the disturbance of the  $\bar{p}$  and  $e^+$  plasmas in the Penning trap, since the coils that have primarily axial fields were turned on before the primarily-radial octupole field was ramped up. One can also see that the mutual inductance between the pinch and bucking coils results in the bucking ramp-up affecting the current running through the pinch coil. The sequence used for Fig. 21 results in a fully energized octupole trap with steady currents in just over two minutes.

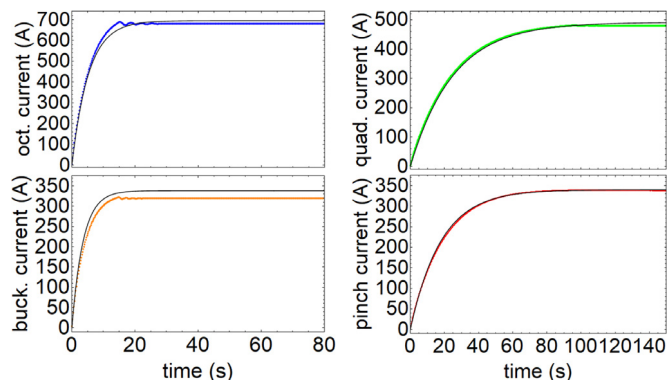


**Table 6**  
Lead resistances and ramp up time constants for the Ioffe coils.

	$r$ ( $\Omega$ )	$L/r$ (s)
Octupole	0.0036	5.1
Quadrupole	0.0045	24
Pinch	0.0060	18
Bucking	0.0056	3.7



**Fig. 19.** Overlaid energizations of the individual Ioffe coils to high current (680 A octupole, 500 A quadrupole, 340 A pinch, 320 A bucking).

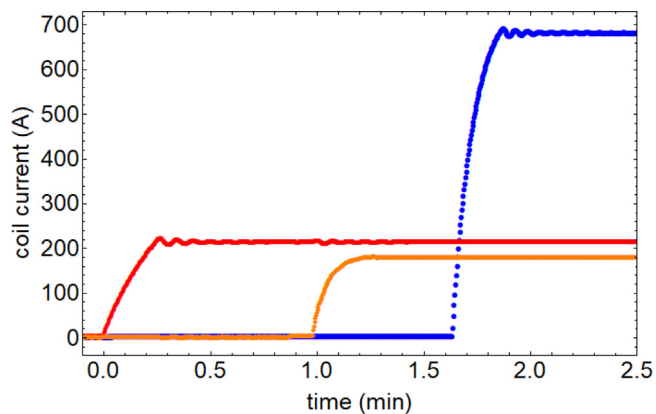


**Fig. 20.** Energization of each of the Ioffe coils. The solid black curves are the prediction from Eq. (7) using the values in Tables 5 and 6, and the colored points are measured currents. (For interpretation of the references to color in this figure legend, the reader is referred to the web version of this article.)

## 5.2. Diagnostic measurements

The bias field, a field-boosting solenoid used only during  $\bar{p}$  loading, and the pinch coil must produce fields that point in the same direction along the central  $z$  axis, while the bucking coil produces a field in the opposite direction. It is important to confirm that the various coils are actually energized when intended and that the magnetic trapping field disappears at the same rate as the coil currents when we dump the trap for  $\bar{H}$  detection.

Two independent measurement systems monitor the behavior of our trap coils, and an additional one monitors all of our magnets. The first is the system monitoring the voltage taps, discussed in Section 4.5, that allows the voltage over the individual coils of the Ioffe trap to be monitored. The second is a set of current sensors for those coils, and the third is a set of Hall probes for measuring the magnetic field in the vicinity of the Ioffe trap. Discussion of the latter two systems is given below.



**Fig. 21.** Coil currents during the automated ramp-up routine for a full-depth octupole trap, with the octupole current (680 A) in blue, the pinch current (210 A) in red, and the bucking current (179 A) in orange. (For interpretation of the references to color in this figure legend, the reader is referred to the web version of this article.)

### 5.2.1. Current sensors

A Hall-effect current sensor (Tamura L34S1T0D15) is placed at the current return of each power supply in order to have an independent measure of the current running through the Ioffe magnet coils. These sensors can measure currents up to 1000 A and have a response time of less than 5  $\mu$ s, so they could be used to directly measure the current during fast dumps. Data from these sensors are used in Figs. 19, 20, and 21.

### 5.2.2. Magnetic field sensors

Three Hall probes (Cryomagnetics HSP-A) are mounted to the top of the Ioffe trap as shown in Fig. 24, arranged such that they measure the field components in three orthogonal directions. Potted with Stycast 2850FT black epoxy into pockets in a custom G10 block (Fig. 24 inset), they face directions that are close enough to cylindrical coordinate axes that those directions ( $\rho$ ,  $\phi$ ,  $z$ ) are used as the naming convention for the individual probes.

These probes are wired and positioned such that the signal for a magnetic field directed upwards along the trap axis would generate a positive voltage from the  $z$ -probe, a field directed radially outward would give a positive voltage in the  $\rho$ -probe, and a field directed to the right in Fig. 24 would give a positive voltage in the  $\phi$ -probe. The sensitivities of the ( $\rho$ ,  $\phi$ ,  $z$ ) probes are (27.2, 38.5, 31.4) mV/T with a 50 mA control current and they are designed to operate at 4.2 K. Table 7 shows the positions of each probe with respect to the center of the Ioffe coils, along with their response to fields generated by each individual coil. These positions are from a coordinate system defined by the CNC data for the coil windings provided by AML, where the  $z$ -axis is opposite our trap orientation.

In addition to monitoring the fields produced by the Ioffe coils, these probes are also useful as a check on the directions of the fields in the Penning-trap solenoid and in the field-boosting solenoid used for enhancing our  $\bar{p}$  catching efficiency. For example, with no current in the Ioffe coils or field-boosting solenoid, the  $z$ -probe was at  $-32.4$  mV, indicating that the Penning-trap field was pointing downwards as desired. Changes in the probe readings could then be monitored as current is added to other coils to ensure that the pinch coil and field-boosting solenoid would add to the Penning field, and that the bucking coil would subtract.

The changing field during fast current dumps can be measured with a 4-channel AI module (NI 9239) reading the probe voltages at a 2 kHz rate. The fourth channel monitors the TTL level that indicates the status of the quench protection system (see Section 4.5), so the voltage-tap measurement data from that DAQ can be synchronized with the Hall-probe data using the TTL change to indicate when the current dump was initiated.

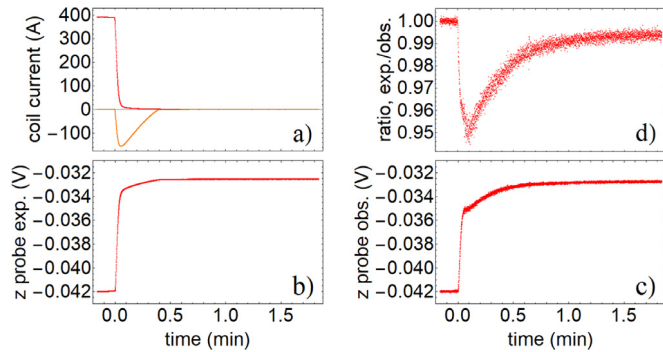


Fig. 22. Comparison of expected and measured Hall probe data during a fast dump of the pinch coil: (a) The measured currents in the pinch (red) and bucking (orange) coils (b) The  $z$ -probe response we would expect from these currents (c) The measured  $z$ -probe voltages (d) The ratio of the expected voltages to the measured voltages. (For interpretation of the references to color in this figure legend, the reader is referred to the web version of this article.)

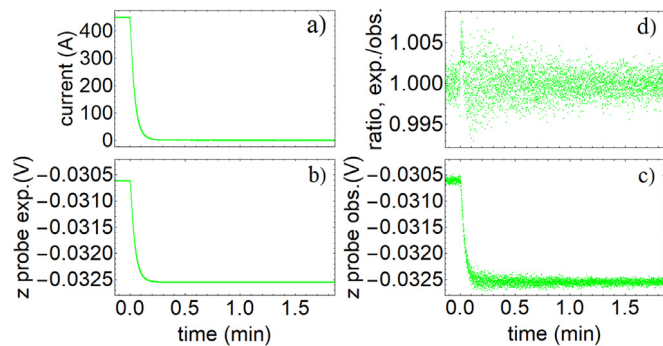


Fig. 23. Comparison of expected and measured Hall probe data during a fast dump of the quadrupole coil: (a) The measured currents (b) The  $z$ -probe response we would expect from these currents (c) The measured  $z$ -probe voltages (d) The ratio of the expected voltages to the measured voltages.

Figs. 22 and 23 show some of the Hall probe data obtained during fast dumps of the pinch and quadrupole coils, respectively. These figures also indicate that the effect of eddy currents caused by dumping the current from the pinch coil is much more noticeable than that from dumping the quadrupole coil.

Fig. 22a shows the measured currents during the fast dump of the pinch. Due to the mutual inductance between the pinch and bucking coils, dumping 390 A from the pinch coil results in a current spike of 156 A in the bucking coil. Given these currents and the sensitivity of the  $z$ -probe, the expected Hall voltage at each measured current can be calculated (Fig. 22b). To eliminate effects from uncertainty in the mV/T sensitivity and the value of the control current, the  $z$ -probe readings just before and long after the current dump were used to perform a self-calibration of the probes that went into the data in Fig. 22b. The measured  $z$ -probe response during the fast dump of the pinch coil is in Fig. 22c, and the ratio of the expected values to the measured values is in Fig. 22d. This ratio indicates that the eddy current effects in this case are at the 5% level at the beginning of the dump, and remain at the 1% level a couple seconds after the current has been completely removed from the coils.

A similar analysis was done for the data in Fig. 23, where a fast dump of the quadrupole coil was initiated from a starting current of 450 A. In this case, the mutual inductance with other coils is small enough that the induced currents are negligible. Comparing the expected and measured  $z$ -probe readings gives a ratio plot (Fig. 23d) that deviates from unity only at the very beginning of the dump and by less than 1%. This suggests that eddy current effects from dumping the quadrupole coil are small.

Table 7

Locations with respect to center of the coils and calculated sensitivities (in terms of the coil currents) for the  $\rho$ ,  $\phi$  and  $z$  probes.

	( $\rho, \phi, z$ ) (mm, deg, mm)	Octupole ( $\mu\text{V}/\text{A}$ )	Quadrupole ( $\mu\text{V}/\text{A}$ )	Pinch ( $\mu\text{V}/\text{A}$ )	Bucking ( $\mu\text{V}/\text{A}$ )
$\rho$	(82, 281, -204)	-0.144	-2.26	-21.6	+2.31
$\phi$	(97, 287, -196)	-0.527	-1.33	+6.74	-0.732
$z$	(86, 286, -187)	+0.124	+4.21	-29.9	+5.09

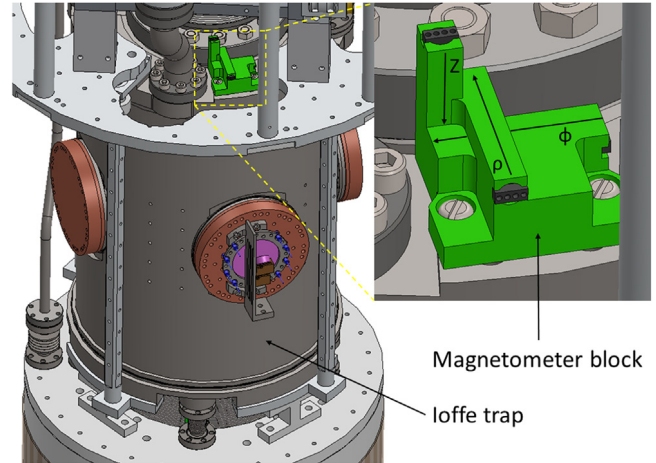


Fig. 24. Location and axes of the Hall probes used to check and verify the Ioffe trap fields. The G10 block containing the Hall probes attaches directly to the top plate of the Ioffe trap vacuum enclosure. One of the visible Ioffe sideports in this model features a laser-access window and mirrors.

### 5.3. Quench detection

The external protection circuit, described in Section 4.5, reliably detected quench events and triggered a switch of the IGBT state to drain the current in the coil before it could cause damage to the magnet. The importance of this protection system was reinforced by the result of a quench that occurred during a development test in which the protection system was disabled. In that event, one of the superconducting leads to the quadrupole coil melted through. Since this damage was outside the G10 winding block it was possible to repair it and continue to use the quadrupole coil.

The quench protection electronics boxes allow the voltage threshold at which a current dump is triggered to be set manually. While they can trigger on imbalances in the voltage drops over the two VCLs, the two busbars, or the two halves of the coil, our standard practice is to set the lowest threshold for the voltage difference between the two magnet halves; the imbalance produced by a quench is most likely to be seen there first. The threshold is set as low as possible without the system being in danger of triggering on noise.

While the voltages actually seen by the quench protection circuit are smaller due to the voltage dividers mentioned earlier, voltage tap measurements are presented in Fig. 25 in terms of the voltages seen by the magnet circuit elements. So, as can be seen in Fig. 25, the peak-to-peak noise level of the voltage measurements over each half of a coil is about 100 mV. Our standard threshold setting for the imbalance between magnet halves is 250 mV. The line at  $t = 0$  in the plots in Fig. 25 represents the time at which the quench protection circuit triggered a fast current dump. In Fig. 25a the dump was triggered manually, while in Fig. 25b a quench detection triggered the current dump. One can see that in the case of a quench the voltage drops over halves of the magnet start to diverge. The voltage drops over the magnet halves in Fig. 25b prior to the quench were non-zero because the quench occurred while the current in the coil was being ramped up. In both cases, once the quench protection circuit is triggered (either

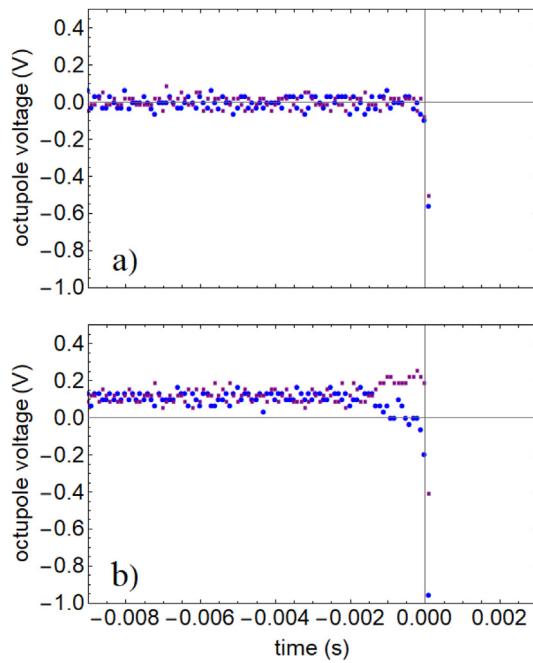


Fig. 25. The voltages across halves of the octupole coil just prior to a triggered dump (top) and a detected quench (bottom). Time zero indicates when the quench protection circuit triggered. Blue circles represent  $V_C - V_D$ , and the purple squares are  $V_D - V_E$ .

manually or through a detected quench) the measured magnet voltages behave in the same manner.

As discussed in more detail in Refs. [26] and [27], during a quench the voltage over the magnet terminals remains relatively unchanged as the resistive voltage drop due to a section of the superconductor becoming normally-conducting is in opposition to the voltage induced by the changing current in the inductive coil. Thus, as a quench begins, there is little to no change in the measurements from voltage taps C and E, while the voltage at tap D will either increase or decrease depending on which half of the magnet contains the quenching region. In Fig. 25b, as a quench begins, the voltage drops over magnet halves ( $V_C - V_D$  and  $V_D - V_E$ ) change in opposite directions by approximately equal amounts.

#### 5.4. Rapid current dumps

Upon detection of a quench, the protection system triggers, rapidly removing the current from the coils to protect them from damage. To release  $\bar{H}$  from the trap for detection, it is shut off by manually triggering the same system. In either case, once the protection system opens the IGBT the effective circuit can be drawn as in Fig. 26. This is similar to the effective charging circuit from Fig. 17, but with the IGBT unit's capacitor in place of the power supply.

Since the resistances, capacitances, and inductances of the components in Fig. 26 have been measured independently, the circuit can be solved to generate a prediction for the voltages over a Ioffe coil during a fast current dump. The differential equation for the current through the inductor,  $I_L(t)$ , in terms of the time constants  $\tau_{RC} = RC$  and  $\tau_{LR} = L/R$  is

$$\tau_{RC}\tau_{LR}\ddot{I}_L + \tau_{LR}\dot{I}_L + \left(\frac{r+R}{R}\right)I_L = 0. \quad (8)$$

With the initial condition of a constant current  $I_0$  running through the inductor, the exact solution can be written as

$$I_L = I_0 \left[ \frac{1+s}{2s} e^{-\frac{t(1-s)}{2\tau_{RC}}} - \frac{1-s}{2s} e^{-\frac{t(1+s)}{2\tau_{RC}}} \right], \quad (9)$$

where

$$s \equiv \sqrt{1 - 4\left(\frac{r+R}{R}\right)\frac{\tau_{RC}}{\tau_{LR}}}. \quad (10)$$

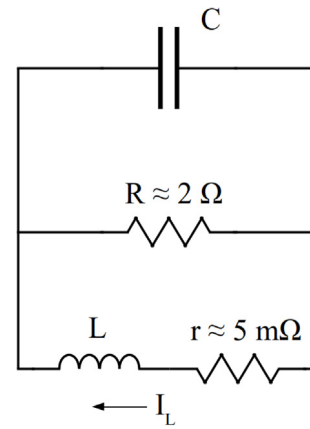


Fig. 26. The effective circuit for dumping an individual Ioffe coil.

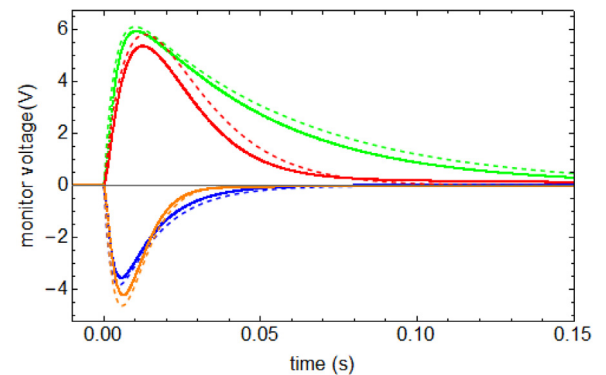


Fig. 27. Measured (solid) and predicted (dashed) voltages in the quench protection circuit produced by rapid dumps of the octupole (blue), quadrupole (green), pinch (red) and bucking (orange) coils, respectively. (For interpretation of the references to color in this figure legend, the reader is referred to the web version of this article.)

With Eq. (9) giving the form of the current through a Ioffe coil during a rapid dump, the expression for the voltage spike over the coil can be written down from  $V = LdI_L/dt$ , giving

$$V_{\text{coil}} = \frac{I_0 R}{s} \left[ e^{-\frac{t(1+s)}{2\tau_{RC}}} - e^{-\frac{t(1-s)}{2\tau_{RC}}} \right]. \quad (11)$$

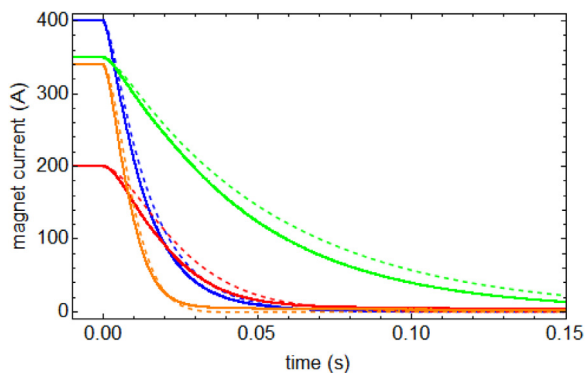
Our quench protection system continuously monitors the voltages across the coils using the voltage taps discussed in Section 4.5. As mentioned there, the voltage spike first passes through a cryogenic voltage divider to reduce the amplitude by a factor of five. A roughly 5 meter long cable made using Alphawire 6383 (ground capacitance of 207 pF/m) carries the tap voltages to the quench protection electronics. Here they pass through another voltage divider to reduce their amplitude by another factor of twenty, in order to keep them within the operating range of the circuit components. The voltages that our protection system monitors (and records at a rate of 10 kHz in the event of a quench or triggered dump) are those after the voltage dividers and cabling. To obtain the voltage observed by the voltage monitors in the quench protection circuit,  $V_{\text{mon}}$ , the differential equation

$$V_{\text{coil}} = 100V_{\text{mon}} + (0.012)\dot{V}_{\text{mon}} \quad (12)$$

can be solved.

Fig. 27 shows examples of the monitor-voltage spikes for rapid current dumps of each individual Ioffe coil. The initial currents in each are  $I_0 = 400, 350, 200,$  and  $340$  A for the octupole, quadrupole, pinch, and bucking coil, respectively. In each case, it is observed that the predicted voltage spike is slightly higher than the measured value. If, instead of using the measured values of the dump resistor,





**Fig. 28.** Current in the octupole (blue), quadrupole (green), pinch (red) and bucking (orange) coils as measured by the current sensors (points) together with the current predicted in Eq. (9) (dashed). (For interpretation of the references to color in this figure legend, the reader is referred to the web version of this article.)

coil inductance, and IGBT-unit capacitance, they are allowed (along with the capacitance of the cable between the trap and the quench protection system) to be variable parameters in a fit to the octupole data, much better agreement between the curve and the data can be obtained. The best-fit values for  $R$ ,  $L$ , and  $C$  are within about 15% of the independently measured values, while the cable capacitance in the fit increases by an order of magnitude. This indicates that there are significant additional stray capacitances in this distributed circuit that are not accounted for by the model based on Fig. 26.

As introduced in Section 5.2, a set of Hall-effect current sensors provide an independent means of monitoring the behavior of the Ioffe coils during a rapid dump. These devices are used to record the current during the rapid dumps of Fig. 27 at the same (10 kHz) rate as the voltage data. Fig. 28 shows this data along with the predicted curve from Eq. (9). As in Fig. 27, the predicted curve shows reasonably good qualitative agreement with the measurements, with the remaining discrepancy likely reflecting features of the physical circuit that are not included in the model, such as distributed capacitance.

While our model of the circuit during a rapid dump clearly neglects features that have a noticeable effect on the shapes of the voltage and current curves, it is equally clear that the model includes the primary contributions to those curves. This model could then be used, for example, to guide an effort to fine-tune the dump resistance values to optimize the current-decay time while keeping the height of the voltage spike below a chosen limit. The qualitative agreement between the model and the measurements adds to our confidence that the predicted effect of changing the dump resistance will match the effect that would be observed in the actual circuit.

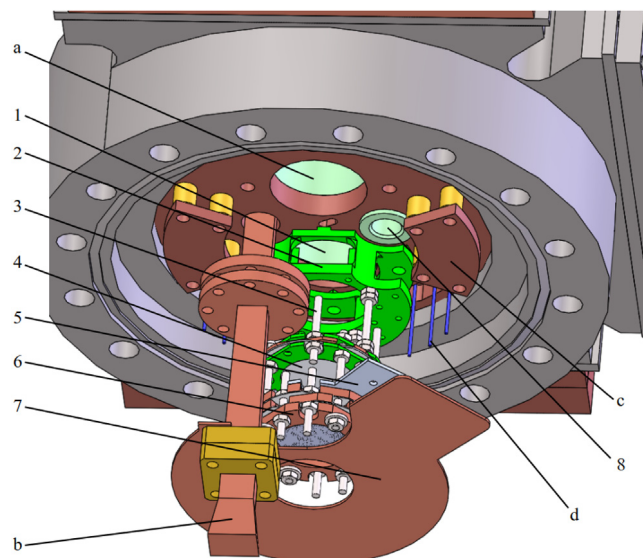
## 6. Signals of trapped $e^+$ , $\bar{p}$ , and $\bar{H}$

To illustrate the usefulness of the Penning-Ioffe trap two examples are used. For charged particles, images of antiproton and positron plasmas are shown. Evidence of the robust trapping of neutral antihydrogen atoms is also presented.

### 6.1. Antimatter plasmas

A plasma imaging system inside the cryogenic vacuum space of the Penning-Ioffe trap characterizes the electron, positron, and antiproton plasmas used during our antihydrogen production procedure. By running through a sequence of plasma preparation steps [28] and then ejecting the plasma up to the imaging system, it could be confirmed that we were reproducibly preparing plasmas with appropriate radii at each stage of the procedure.

Fig. 29 shows the components of this system, which were mounted to the bottom of a translation stage that contains the upper boundary



**Fig. 29.** The cryogenic components of the plasma imaging system mounted to the bottom of a translation stage. Labeled components are: 1. G10 tube capped by a  $MgF_2$  window (not visible) for viewing the phosphor screen from above; 2. G10 insulating mount; 3. Ti threaded rods; 4. phosphor screen, Cu bias plate, and G10 insulating rings; 5. heating tab; 6. MCP assembly (2 MCPs, 3 Cu bias plates); 7. grounded shield; and 8. G10 tube capped by window (not visible) for MCP heating laser. Other, unrelated components include: a. G10 tube capped by  $MgF_2$  window (not visible) for directing laser light along the trap axis; b. microwave horn; c. tray holding activated charcoal; and d. electrical feedthroughs.

of the Penning trap volume and allows multiple devices, viewports, and small through-holes to be moved to the center of the trap axis. The grounded copper shield, located 9 cm above the topmost Penning-trap electrode, helps protect the insulating components of the imaging system from charging up during particle loading and shields the Penning-trap electrodes from the MCP bias voltages. Our MCP assembly consists of two Hamamatsu F1094-01 MCPs and three bias plates to allow us to control the voltage across each MCP individually. The base of the MCP assembly includes an anodized aluminum tab located below a viewport through which a heating laser can be sent, as repeated firing of the MCPs at their 12 K measured equilibrium temperature would be expected to deplete the electrons in the channels. A plasma that impacts the bottom MCP results in a similarly-shaped cloud of electrons accelerated towards the phosphor screen (Kimball Physics PHOS-UP22GL).

The light from the phosphor is recorded using a camera located out of vacuum at a distance of about 1 meter from the phosphor screen. Fig. 30 shows two example images, one for an antiproton plasma and one for a positron plasma. The effective active area of the phosphor is 20 mm diameter due to the mounting hardware. The edge of the 1-inch diameter  $MgF_2$  window just above the phosphor screen is visible in the full images, so that diameter is used to generate a pixels per mm calibration. Typical plasma radii used for antihydrogen production trials were 4 mm for antiprotons and 1 mm for positrons.

### 6.2. Trapped antihydrogen

Towards the end of the 2018 antiproton beam run at CERN's antiproton decelerator facility, we developed a procedure for repeatedly preparing antiproton and positron plasmas in a nested well for  $\bar{H}$  production. In 9 trials performed identically, average annihilation signals above background were observed, indicating the successful production and confinement of antihydrogen atoms in our second-generation Penning-Ioffe trap.

In each of these trials the detection method was destructive: after running through the procedure to induce the  $\bar{p}$  and  $e^+$  to interact and

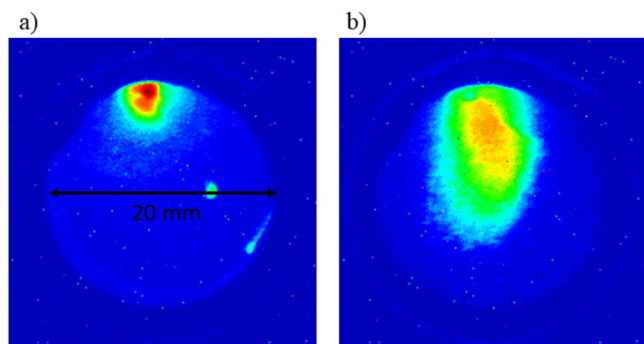


Fig. 30. (a) An example image of a positron plasma, with the 20 mm diameter of the visible surface of the phosphor screen indicated. The movable stage the imaging system was mounted to did not have sufficient range of motion to center the imaging system on the trap axis. (b) An example image of a less-compressed antiproton plasma.

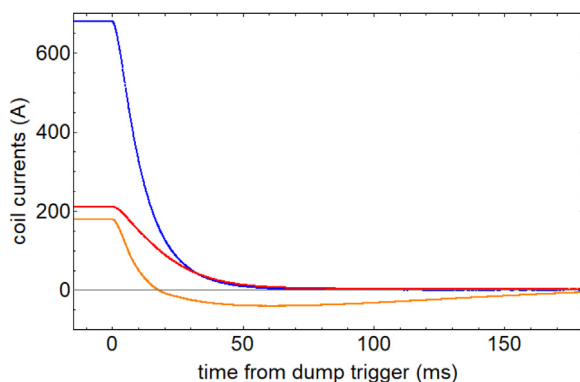


Fig. 31. Measured currents during a fast dump of the octupole trap, with the octupole coil current in blue, the pinch current in red, and the bucking current in orange. (For interpretation of the references to color in this figure legend, the reader is referred to the web version of this article.)

form  $\bar{H}$  through three-body recombination while the Ioffe trap was energized, a 5 V/cm electric field was applied to remove any remaining charged particles, then a trigger was sent to the quench protection boxes to dump the current from the Ioffe trap. This released any trapped  $\bar{H}$ , which annihilate on the electrode stack producing pions that can be observed by our particle detectors [29]. Given the coil currents measured during a fast dump of the octupole trap (Fig. 31), it can be determined that after 35 ms there is no radial confinement and the axial confinement has decreased by 94%, and after 50 ms essentially no  $\bar{H}$  confinement remains. This is consistent with the simulated  $\bar{H}$  release times in the bottom plot of Fig. 32, and motivates the 50 ms time bins in the annihilation data from nine trials shown in the upper plot of Fig. 32. The excess of counts in the first 50 ms of data after sending the dump trigger corresponds to  $5 \pm 2$   $\bar{H}$  per trial.

## 7. Conclusion

The ATRAP collaboration developed and utilized two implementations of a combined Penning-Ioffe trap, both of which featured radial access ports to allow trapped particles to be addressed with lasers or microwaves traveling perpendicular to the Penning-trap magnetic field direction. These traps both reached significant milestones, showing evidence of trapped antihydrogen, as well as, in the case of the first Penning-Ioffe trap, demonstrating a novel laser-controlled, two-step charge exchange procedure for producing  $\bar{H}$ .

ATRAP's second Penning-Ioffe trap was built with two sets of coils for generating a radial field gradient, allowing for the neutral particle trap to be energized in either a quadrupole or octupole symmetry. Its

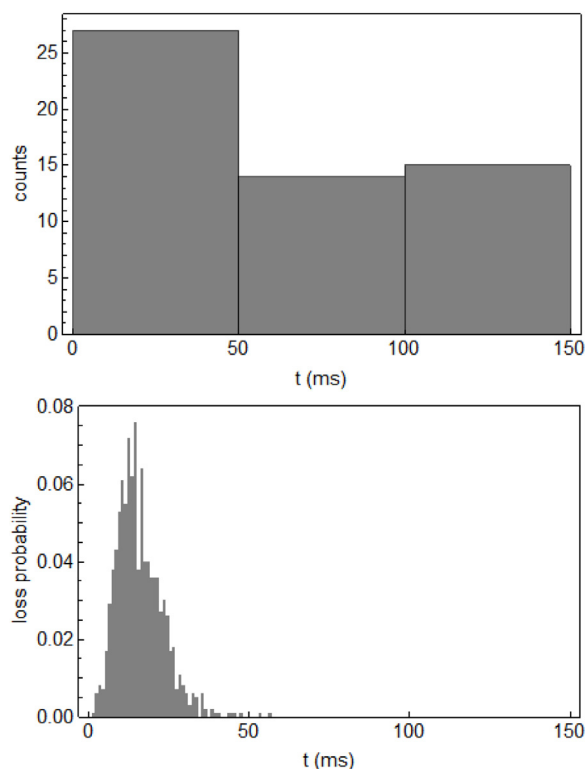


Fig. 32.  $\bar{H}$  annihilation data (top) and simulations (bottom), with  $t = 0$  corresponding to the initiation of a fast dump of the Ioffe trap. Virtually all trapped  $\bar{H}$  should annihilate in the first 50 ms, so counts during the next two time segments give the background rate.

low-inductance, high-current coils allowed for rapid ramp-up and de-energization, which is advantageous for  $\bar{H}$  production and destructive detection. The high-current feedthroughs required for operation cause the rate of liquid helium usage to be significantly higher than that of ATRAP's first Penning-Ioffe trap, but that was compensated for by implementing a reliable automated LHe filling system.

A suite of voltage, current, and magnetic field diagnostics provides means of monitoring the performance of the Ioffe trap coils with sufficient redundancy to confirm that the trap depth and turn-on/turn-off times were all reaching the design goals. In addition, the plasma imaging system aided in the development of a reproducible procedure for preparing  $\bar{p}$  and  $e^+$  plasmas for  $\bar{H}$  production. The resulting evidence of  $\bar{H}$  detection demonstrates the potential of this apparatus for precision spectroscopy of antihydrogen atoms.

## CRediT authorship contribution statement

**E. Tardiff:** Writing - original draft, Resources, Investigation, Software, Methodology, Validation. **X. Fan:** Writing - review & editing, Resources, Methodology. **G. Gabrielse:** Writing - original draft, Supervision, Conceptualization, Funding acquisition, Methodology, Project administration. **D. Grzonka:** Writing - review & editing, Supervision, Resources, Validation, Methodology. **C. Hamley:** Resources, Software, Methodology. **E.A. Hessels:** Writing - review & editing, Supervision, Funding acquisition. **N. Jones:** Investigation, Formal analysis, Visualization, Software, Methodology. **G. Khatri:** Investigation, Formal analysis, Visualization. **W.S. Kolthammer:** Writing - review & editing, Resources, Methodology. **D. Martinez Zambrano:** Resources, Investigation, Methodology, Validation. **C. Meisenhelder:** Resources, Methodology. **T. Morrison:** Resources, Investigation, Software, Methodology, Validation. **E. Nottet:** Investigation, Software, Methodology, Validation. **E. Novitski:** Writing - review & editing, Resources, Software, Methodology. **C.H. Storry:** Supervision, Resources, Methodology.

## Declaration of competing interest

The authors declare that they have no known competing financial interests or personal relationships that could have appeared to influence the work reported in this paper.

## Acknowledgments

We are grateful to Bruce Gold at Joining Technologies for his intricate electron beam welding of the titanium enclosure for the Ioffe coils. We'd like to recognize the following former members of the ATRAP collaboration for their contributions to early development tests of the second-generation Ioffe trap: Rita Kalra, Martin Kossick, and Stephan Malbrunot (né Ettenauer). M. Kossick also contributed to early design work for the VCLs, and S. Malbrunot contributed to the vacuum enclosure design. We thank Phil Richerme for his early work on the quench protection system and large-diameter electrodes. This work was supported by the NSF and by the AFOSR.

## References

- [1] G. Gabrielse, X. Fei, K. Helmerson, S.L. Rolston, R.L. Tjoelker, T.A. Trainor, H. Kalinowsky, J. Haas, W. Kells, First capture of antiprotons in a penning trap: A KeV source, *Phys. Rev. Lett.* 57 (1986) 2504–2507.
- [2] G. Gabrielse, S.L. Rolston, L. Haarsma, W. Kells, Antihydrogen production using trapped plasmas, *Phys. Lett. A* 129 (1988) 38–42.
- [3] G. Gabrielse, Penning traps, masses and antiprotons, in: P. Bloch, P. Pavlopoulos, R. Klapisch (Eds.), *Fundamental Symmetries*, Plenum, New York, 1987, pp. 59–75.
- [4] H. Herr, D. Mohl, A. Winnacker, Production and experimentation with antihydrogen at LEAR, in: U.G.G. Klapisch (Ed.), *Physics At LEAR with Low-Energy Cooled Antiprotons*, Plenum, New York, 1984, p. 659.
- [5] Y.V. Gott, M.S. Ioffe, V.G. Tel'kovskii, *Nuc. Fusion* 1962 Suppl. Pt. 3 (1962) 1045.
- [6] F.M. Esser, J. Schillings, H. Soltner, M. Schmitt, G. Hansen, Design of a superconducting magnet for trapping antihydrogen atoms at CERN, *IEEE Trans. Appl. Supercond.* 19 (2009) 2LPK11.
- [7] G. Gabrielse, P. Laroche, D. Le Sage, B. Levitt, W.S. Kolthammer, R. McConnell, P. Richerme, J. Wrubel, A. Speck, M.C. George, D. Grzonka, W. Oelert, T. Sefzick, Z. Zhang, A. Carew, D. Comeau, E.A. Hessels, C.H. Storry, M. Weel, J. Walz, Antihydrogen production in a Penning-Ioffe trap, *Phys. Rev. Lett.* 100 (2008) 113001.
- [8] G. Gabrielse, R. Kalra, W.S. Kolthammer, R. McConnell, P. Richerme, D. Grzonka, W. Oelert, T. Sefzick, M. Zielinski, D. Fitzakerley, M.C. George, E.A. Hessels, C.H. Storry, M. Weel, A. Müllers, J. Walz, Trapped antihydrogen in its ground state, *Phys. Rev. Lett.* 108 (2012) 113002.
- [9] W. Bertsche, et al., A magnetic trap for antihydrogen confinement, *Nucl. Instrum. Methods Phys. Res. A* 566 (2006) 746–756.
- [10] G.B. Andresen, et al., Trapped antihydrogen, *Nature* 468 (2010) 673.
- [11] D.S. Hall, G. Gabrielse, Electron cooling of protons in a nested Penning trap, *Phys. Rev. Lett.* 77 (1996) 1962–1965.
- [12] G. Gabrielse, D.S. Hall, T. Roach, P. Yesley, A. Khabbaz, J. Estrada, C. Heimann, H. Kalinowsky, The ingredients of cold antihydrogen: Simultaneous confinement of antiprotons and positrons at 4 K, *Phys. Lett. B* 455 (1999) 311–315.
- [13] M. Amoretti, et al., Production and detection of cold antihydrogen atoms, *Nature* 419 (2002) 456–459.
- [14] G. Gabrielse, N.S. Bowden, P. Oxley, A. Speck, C.H. Storry, J.N. Tan, M. Wessels, D. Grzonka, W. Oelert, G. Scheppers, T. Sefzick, J. Walz, H. Pittner, T.W. Hänsch, E.A. Hessels, Background-free observation of cold antihydrogen with field-ionization analysis of its states, *Phys. Rev. Lett.* 89 (2002) 213401.
- [15] G. Gabrielse, N.S. Bowden, P. Oxley, A. Speck, C.H. Storry, J.N. Tan, M. Wessels, D. Grzonka, W. Oelert, G. Scheppers, T. Sefzick, J. Walz, H. Pittner, T.W. Hänsch, E.A. Hessels, Driven production of cold antihydrogen and the first measured distribution of antihydrogen states, *Phys. Rev. Lett.* 89 (2002) 233401.
- [16] D.E. Pritchard, Cooling neutral atoms in a magnetic trap for precision spectroscopy, *Phys. Rev. Lett.* 51 (1983) 1336.
- [17] T.M. O'Neil, A confinement theorem for nonneutral plasmas, *Phys. Fluids* 23 (1980) 2216–2218.
- [18] T.M. Squires, P. Yesley, G. Gabrielse, Stability of a combined Penning-Ioffe trap, *Phys. Rev. Lett.* 86 (2001) 5266–5269.
- [19] G. Gabrielse, J. Estrada, J.N. Tan, P. Yesley, N.S. Bowden, P. Oxley, T. Roach, C.H. Storry, M. Wessels, J. Tan, D. Grzonka, W. Oelert, G. Scheppers, T. Sefzick, W. Breunlich, M. Carnelli, H. Fuhrmann, R. King, R. Ursin, H. Zmeskal, H. Kalinowsky, C. Wesdorp, J. Walz, K.S.E. Eikema, T. Haensch, First positron cooling of antiprotons, *Phys. Lett. B* 507 (2001) 1–6.
- [20] J. Fajans, A. Schmidt, Malmberg-penning and minimum-b trap compatibility: The advantages of higher-order multipole traps, *Nucl. Instrum. Methods Phys. Res. A* 521 (2004) 318–325.
- [21] A.I. Zhimoginov, A.E. Charman, R. Shaloo, J. Fajans, J.S. Wurtele, Nonlinear dynamics of anti-hydrogen in magnetostatic traps: Implications for gravitational measurements, *Classical Quantum Gravity* 30 (2013) 205014.
- [22] A. Speck, C.H. Storry, E. Hessels, G. Gabrielse, Laser-controlled production of Rydberg positronium via charge exchange collisions, *Phys. Lett. B* 597 (2004) 257–262.
- [23] R. McConnell, G. Gabrielse, W.S. Kolthammer, P. Richerme, A. Müllers, J. Walz, D. Grzonka, M. Zielinski, D. Fitzakerley, M.C. George, E.A. Hessels, C.H. Storry, M. Weel, Large numbers of cold positronium atoms created in laser-selected rydberg states using resonant charge exchange, *J. Phys. B* 49 (2016) 064002.
- [24] C.H. Storry, A. Speck, D. Le Sage, N. Guise, G. Gabrielse, D. Grzonka, W. Oelert, G. Scheppers, T. Sefzick, J. Walz, H. Pittner, M. Herrmann, T.W. Hänsch, D. Comeau, E.A. Hessels, First laser-controlled antihydrogen production: A second method to produce slow antihydrogen, *Phys. Rev. Lett.* 93 (2004) 263401.
- [25] W.S. Kolthammer, *Antimatter Plasmas Within a Penning-Ioffe Trap* (Ph.D. thesis), Harvard University, 2011.
- [26] E. Novitski, *Apparatus and Methods for a New Measurement of the Electron and Positron Magnetic Moments* (Ph.D. thesis), Harvard University, 2017.
- [27] M.N. Wilson, *Superconducting Magnets*, Oxford University Press, Oxford, 1983.
- [28] E. Nottet, *Improved Antihydrogen Production at the ATRAP Experiment* (Ph.D. thesis), Northwestern University, 2020.
- [29] Z. Zhang, *The Detection of Cold Antihydrogen Atoms* (Ph.D. thesis), Ruhr-Universität Bochum, 2007.