



Test-beam studies of a small-scale TORCH time-of-flight demonstrator

S. Bhasin^{b,e}, T. Blake^c, N. Brook^e, T. Conneely^h, D. Cussans^b, R. Forty^f, C. Frei^f,
E.P.M. Gabriel^d, R. Gao^a, T. Gershon^c, T. Gys^f, T. Hadavizadeh^a, T.H. Hancock^{a,*}, N. Harnew^a,
M. Kreps^c, J. Milnes^h, D. Piedigrossi^f, J. Rademacker^b, M. van Dijk^g

^a Denys Wilkinson Laboratory, University of Oxford, Keble Road, Oxford OX1 3RH, United Kingdom

^b H.H. Wills Physics Laboratory, University of Bristol, Tyndall Avenue, Bristol BS8 1TL, United Kingdom

^c Department of Physics, University of Warwick, Coventry, CV4 7AL, United Kingdom

^d School of Physics and Astronomy, University of Edinburgh, James Clerk Maxwell Building, Edinburgh EH9 3FD, United Kingdom

^e University of Bath, Claverton Down, Bath BA2 7AY, United Kingdom

^f CERN, EP Department, CH-1211 Geneva 23, Switzerland

^g CERN, EN Department, CH-1211 Geneva 23, Switzerland

^h Photek Ltd., 26 Castleham Road, St Leonards on Sea, East Sussex, TN389 NS, United Kingdom

ARTICLE INFO

Keywords:

Time-of-flight
Particle identification
Cherenkov radiation
Micro-channel plate photo-multiplier tubes
LHCb upgrade

ABSTRACT

TORCH is a time-of-flight detector designed to perform particle identification over the momentum range 2–10 GeV/c for a 10 m flight path. The detector exploits prompt Cherenkov light produced by charged particles traversing a quartz plate of 10 mm thickness. Photons are then trapped by total internal reflection and directed onto a detector plane instrumented with customised position-sensitive Micro-Channel Plate Photo-Multiplier Tube (MCP-PMT) detectors. A single-photon timing resolution of 70 ps is targeted to achieve the desired separation of pions and kaons, with an expectation of around 30 detected photons per track. Studies of the performance of a small-scale TORCH demonstrator with a radiator of dimensions $120 \times 350 \times 10 \text{ mm}^3$ have been performed in two test-beam campaigns during November 2017 and June 2018. Single-photon time resolutions ranging from 104.3 ps to 114.8 ps and 83.8 ps to 112.7 ps have been achieved for MCP-PMTs with granularity 4×64 and 8×64 pixels, respectively. Photon yields are measured to be within $\sim 10\%$ and $\sim 30\%$ of simulation, respectively. Finally, the outlook for future work with planned improvements is presented.

1. Introduction

TORCH is a time-of-flight (ToF) detector designed to perform Particle Identification (PID) at low momentum (2–10 GeV/c) over a 10 m flight path [1,2]. The principle of operation is demonstrated in Fig. 1. TORCH exploits prompt Cherenkov photons produced by charged particles traversing a quartz plate of 10 mm thickness, combining timing measurements with DIRC-style reconstruction, a technique pioneered by the BaBar DIRC [3] and Belle II TOP [4,5] collaborations. A fraction of the radiated photons are trapped by total internal reflection, which then propagate to focusing optics at the periphery of the plate. Here a cylindrical mirrored surface maps the photon angle to a position on a photo-sensitive detector; custom-designed Micro-Channel Plate Photo-Multiplier Tube (MCP-PMT) detectors [6] are used to measure the times of arrival and positions of each photon. Combined with external tracking information, the spatial measurement allows the Cherenkov angle of the emitted photon to be determined.

The TORCH detector has been proposed for Upgrades Ib and II of the LHCb experiment in order to improve the pion, kaon, and proton

separation capability of the experiment in the 2–10 GeV/c range [7]. When installed in LHCb, TORCH will consist of eighteen identical $660 \times 2500 \times 10 \text{ mm}^3$ modules located roughly 9.5 m from the interaction region. Over this distance the difference in time of flight between pions and kaons is ~ 35 ps for a momentum of 10 GeV/c, requiring a 10–15 ps time resolution for clean separation. This requires a single-photon timing resolution of 70 ps, given around 30 detected photons per track.

This paper builds upon the work presented in Ref. [2], in which a small-scale TORCH demonstrator was tested with a prototype MCP-PMT of circular construction, produced by Photek, UK. The same demonstrator has now been verified with square 2-inch (nominal) Photek tubes, in two test-beam campaigns at the CERN PS (East Hall T9 facility) during November 2017 and June 2018. The TORCH demonstrator is described in Section 2. The test-beam infrastructure is presented in Section 3. Section 4 discusses the set of data-driven calibrations which were applied to the data. Results for the single-photon timing resolution and photon counting efficiency are presented in

* Corresponding author.

E-mail address: thomas.hancock@physics.ox.ac.uk (T.H. Hancock).

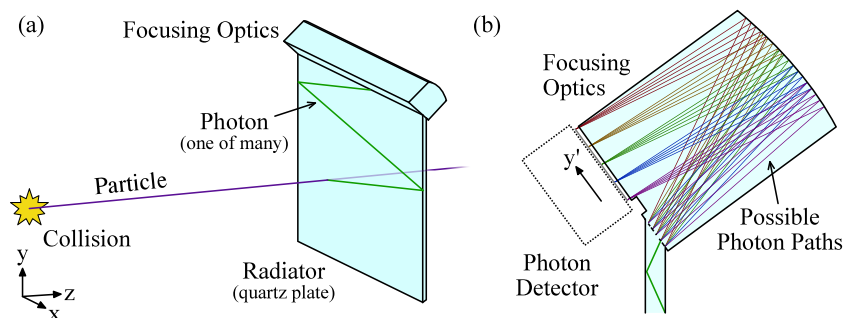


Fig. 1. Schematics of a TORCH module demonstrating the principle of operation. (a) Total internal reflection traps Cherenkov light generated by a particle traversing the radiator plate. (b) Upon reaching the focusing optics, the angle of the photon in the $y-z$ plane is mapped to the y' -coordinate on the detector, allowing θ_c to be determined. Note that the y' axis is rotated by 36° from the vertical (y -axis).

Sections 5 and 6, respectively. Finally a summary and outlook for the future is given in Section 7.

2. The TORCH demonstrator

2.1. Mechanics and optics

The demonstrator consists of a 120 (width) \times 350 (height) \times 10 (thickness) mm^3 radiator plate, optically coupled to a focusing block which has a cylindrically mirrored surface designed to focus 2 mm beyond the exit surface onto the MCP-PMT photocathode. The block has the same dimensions as it would have for a full-sized module in LHCb, except having its width reduced to match the 120 mm width of the plate. The radiator plate and focusing block assembly was mounted into a rigid frame which allowed the angle of incidence of the beam to be varied by tilting the demonstrator about the x -axis, seen in Fig. 1. The complete structure was contained within a light-tight box and mounted upon a translation table, allowing the module to be positioned in the x and y directions with respect to the beam. Further details of the optical components and mounting mechanics can be found in Ref. [2].

2.2. MCP-PMTs and electronics

In each of the two test-beam campaigns, the demonstrator was instrumented with a different two-inch square MCP-PMT with a 64×64 anode pixelisation. The tubes were custom-designed for the TORCH project by Photech Ltd (UK) [6] and represent the final prototypes of a three-stage development process [8]. Charge from the MCP electron avalanche is collected on a resistive layer (“sea”) inside the PMT vacuum, and capacitively coupled to the anode pads. This allows charge sharing to improve the spatial resolution beyond the anode-pad pitch of 0.828 mm. In November 2017, the implemented MCP-PMT had a 4×64 granularity in (x, y') , where the coarse granularity was achieved by electrically grouping pixels on an external Printed Circuit Board (PCB), connected to the anode pads using anisotropic conductive film. In June 2018 the granularity in the x -direction doubled to 8×64 , which, with charge sharing, gives an effective pixelisation which exceeds that required for optimal TORCH performance [9]. For LHCb installation, a pixelisation of 8×128 is planned.

Both MCP-PMTs have an active area of $53 \times 53 \text{ mm}^2$, corresponding to approximately half the width of the demonstrator. In both test-beam campaigns the MCP-PMT was mounted between one side edge and the centre of the focusing block, with the other half of the detector plane not being instrumented.

In the 4×64 MCP-PMT, the insulating layer which separates the resistive-sea from the anode readout pads has a thickness of 0.5 mm. This results in a point-spread function at the pads of 1.80 ± 0.15 mm (FWHM), which was determined from laboratory measurement and verified by simulation [6]. The 8×64 MCP-PMT has a 0.3 mm insulating layer, and results in a point-spread function at the anode

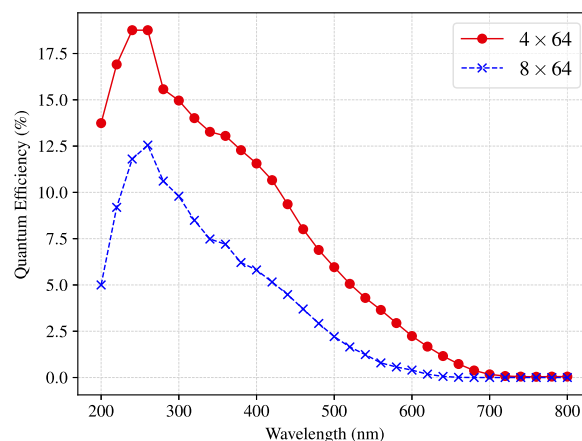


Fig. 2. The quantum efficiencies of the 4×64 (November 2017) and the 8×64 (June 2018) MCP-PMTs, measured at CERN.

pads of 1.30 ± 0.13 mm (FWHM). The quantum efficiencies (QEs) of both tubes were measured in the laboratory, and are shown in Fig. 2. It can be seen that the integrated QE of the 8×64 MCP-PMT is around a factor two less than for the 4×64 device. Although the QE of the 8×64 is not optimal for reaching the desired number of photons per track, the performance of future tubes is expected to improve with further iterations of development.

Readout electronics employing the NINO [10] and HPTDC [11] chipsets were custom-developed for the TORCH project [12]. Due to the increased granularity of the 8×64 MCP-PMT in the coarse-pixel direction, an entirely new readout system was developed to replace that used for the 4×64 device. Because of differences in the size and shape of the boards, new holding mechanics were fabricated for the 8×64 device, which introduced a 5 mm upwards offset of the MCP-PMT in the y' -direction relative to the 4×64 device.

2.3. Hit clustering

As previously discussed, the Photech MCP-PMT was designed so that a single incident photon will give hits on several neighbouring pixels [6]. This means that the 64 physical pixels in the y' -direction can provide an effective granularity of 128 pixels by exploiting charge sharing. In this way, to reconstruct single photons, hits are clustered according to the following criteria:

- they must have the same x -coordinate (coarse pixel direction);
- they must be adjacent neighbours in the y' -coordinate;
- the arrival of the hit must be timed within 1 ns of its neighbour.

All three criteria must be met for any pair of hits to be included in the same cluster. However for the 8×64 dataset, the criteria were slightly



Fig. 3. A schematic showing the beam-line configuration. C1 and C2 are Cherenkov counters. T1 and T2 are timing stations spaced approximately 11 m apart.

modified to account for a small fraction of dead channels: namely, if two clusters fall on either side of a known dead channel and the hits neighbouring the dead channel fall within 2 ns of each other, then the clusters are merged. Cluster size is determined by the number of hits in the cluster, and the cluster position is taken to be the average position of the centroid of all the hits.

2.4. Detector simulation

A simulation of the TORCH demonstrator has been developed, using optical processes modelled by Geant4 [13]. Custom libraries were used to model the detector response and readout, which take input from laboratory measurements including the MCP-PMT quantum efficiency, gain, and point-spread function. Losses due to quartz surface scattering and Rayleigh scattering are modelled. The same simulation was used for both test-beam periods, but with differing input from laboratory-measured parameters for the respective MCP-PMT used.

3. Test-beam setup

In both test-beam campaigns, a 5 GeV/c beam was used, comprising approximately 70% pions and 30% protons. The TORCH demonstrator was positioned with the beam striking half way down the radiator plate, 5 mm from the edge (below the MCP-PMT), and tilted back from the vertical by 5°. This geometrical configuration ensured that the Cherenkov pattern was well contained on the MCP-PMT detector surface.

The same beam-line infrastructure was installed for both campaigns, displayed schematically in Fig. 3. A pair of identical timing stations, T1 and T2, spaced approximately 11 m apart, was used to provide a time reference for TORCH. Each station, oriented at 49° to the beam, consisted of a 100 mm long, 8 × 8 mm² borosilicate bar in which Cherenkov light was generated from traversing particles. A single-channel MCP-PMT detected the direct photons and provided a precise timing signal. The signals were injected into the TORCH electronics and read out simultaneously with the rest of the data. By combining signals from both stations, a time of flight measurement could be made independently of TORCH, providing a cross-check of PID for the particle traversing the TORCH prototype. Additionally, each station had a pair of scintillators providing an 8 × 8 mm² coincidence. Requiring a signal in both scintillators narrowed the beam definition accepted by the trigger and improved the resolution of the time reference. The timing power of the stations is demonstrated in Fig. 4, which shows clearly the separation of pions and protons in the beam. In addition, a pair of threshold Cherenkov counters filled with CO₂ at 2.5 bar were introduced for both campaigns, and provided the independent source of PID.

An EUDET/AIDA pixel beam telescope [14] was also installed in the beam-line, consisting of six 18.4 μm pitch sensors (Mimosa26). The telescope allowed an accurate measurement of the beam profile incident on TORCH, even though an event-by-event synchronisation was not possible. Fig. 5 shows the beam profile measured by the telescope when extrapolated to the TORCH radiator, giving an RMS spot size of 2.73 ± 0.02 mm in *x* and 2.01 ± 0.02 mm in *y*. The beam divergence was measured to be 5.8 ± 0.2 mrad and 2.6 ± 0.2 mrad in *x* and *y*, respectively.

Triggering of the TORCH readout and telescope was provided by an AIDA-2020 Trigger Logic Unit (TLU) [15]. The new beam-line infrastructure allowed a large increase in achievable data rate with respect

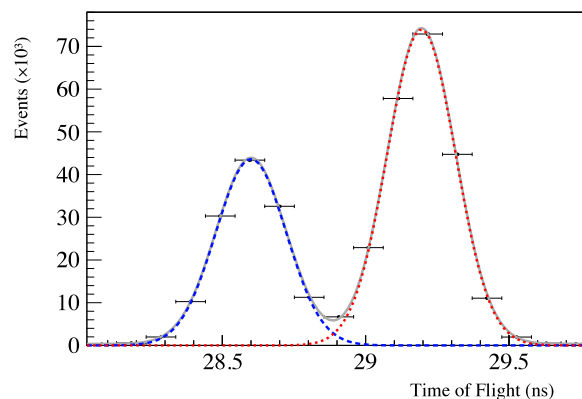


Fig. 4. The time-of-flight difference (T2–T1) over an 11 m flight path, showing the pion contribution in red (dotted) and the proton contribution in blue (dashed). Note that the zero time is arbitrary and, as defined, pions arrive later in time than protons. The horizontal bars denote the bin width.

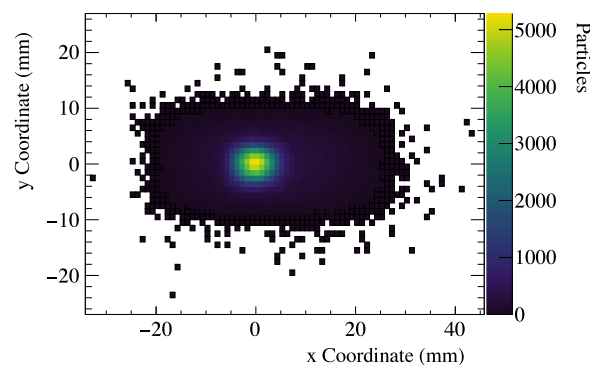


Fig. 5. The beam profile in *x* and *y* measured by the telescope when extrapolated to the TORCH radiator. The outer structure of the shape maps the beam profile and is attributed to scattering. The central distribution is the region defined by the scintillator trigger.

to [2]. By providing the independent source of PID, the Cherenkov counters allowed T1 to be removed from the trigger, with T2 alone being used as a time reference. This led to a wider beam profile that could be triggered upon, significantly increasing the acceptance and trigger rate. Comparing the PID information from the Cherenkov counters with the PID from ToF, the purities of the pion and proton samples from the Cherenkov counters were approximately 94% and 82% in November 2017, and 98% and 96% in June 2018, respectively.

4. Calibrations

Two data-driven calibrations were applied to the data to correct the timing of the MCP-PMT output signals, the first to account for timewalk in the NINO chip, and the second to correct for integral non-linearity in the HPTDC.

The first correction accounts for timewalk of the NINO (i.e. differences in timing due to variations of pulse amplitude), and is adapted from the data-driven method employed in Ref. [2]. The first stage in the calibration process is to define an MCP-PMT photon cluster. Assuming each cluster corresponds to a single photon, the hit pixels within that cluster should have simultaneous recorded times, and any difference $\Delta t_{i,j}$ between pairs of channels *i, j* would be a consequence of time slew. The NINO utilises a time-over-threshold technique, outputting a binary signal with a width defined by the rising and falling edges of the MCP-PMT input pulse when passing an adjustable threshold. The signal width w_i for a channel *i* is hence related to the input pulse amplitude.

This introduces a relationship between $\Delta t_{i,j}$ and the corresponding pulse widths, which can be parameterised as:

$$\Delta t_{i,j} = t_i - t_j = F(w_i, w_j), \quad (1)$$

where $t_{i,j}$ are the recorded times of the hits on channels i, j , and F is chosen to be a 2-dimensional function of quadratic form, with those coefficients determined by a fit to pairs of hits from the same cluster. The constant term also corrects for the relative delay between individual pixel timing offsets (t_0 's). In this way, the parameters of F can be determined for all pairs of channels during a data run. Thereafter a correction is made to the measured arrival time of each single pixel hit according to its measured pulse width. This method assumes the time walk of each individual pixel is uncorrelated with all the others, and improves the method employed in Ref. [2] by comparing all pairs of hits, rather than parameterising and correcting only next-to-nearest neighbours.

The second calibration accounts for non-linearity in the HPTDC chip, where the bins used to digitise the data are not equally spaced in time [11], leading to integral non-linearity. Several large dedicated calibration datasets were taken to allow a code-density test [16] to be performed to correct for this effect.

A calibration step which is presently missing is the so-called charge-to-width calibration, which would allow a more accurate measurement of the amount of charge collected in any given pixel hit as a function of the width of the output pulse. This in turn would allow more accurate cluster centroiding to be performed. This calibration requires a dedicated laboratory-based charge-injection system, and this is currently under development.

5. Single-photon time resolution

Fig. 6 shows the uncorrected distributions (pixel maps) of hits on the MCP-PMTs from the two run periods for pions and protons combined, taken with the beam positioned at the vertical mid-point of the radiator plate, 5 mm from the edge below the MCP-PMT. Bands can be seen, corresponding to different photon paths within the radiator plate. The empty bins in Fig. 6b indicate dead channels. These are attributed to broken wire bonds of the NINO electronics board, an issue which has been resolved in subsequent iterations.

The single-photon time resolution of the demonstrator can be measured by comparing the time at which a photon is detected to that predicted from the TORCH reconstruction algorithm [2]. The algorithm determines the photon path in the radiator plate and the Cherenkov angle from the position of the track entry point, the track direction, and the position of the photon hit on the MCP-PMT. Combining this with knowledge of the primary particle species and its momentum, the time of propagation can then be calculated through the intermediate steps of determining the phase and group refractive indices. Note that the nominal values of beam position and incident angle are used in the reconstruction, leaving any finite beam width and divergence to be accounted for statistically, as described below.

For each column of pixels, the measured arrival time can be plotted against the y' (finely-granulated) pixel number. Fig. 7a shows an example distribution for the 8×64 MCP-PMT, selected for protons only, with the predictions from the reconstruction algorithm overlaid. In calculating the predicted time in the reconstruction, each photon is treated individually and its energy calculated [1]. The distinct bands seen in the figure correspond to the different orders of reflection from the side faces of the demonstrator, illustrated schematically in Fig. 7b. This clearly demonstrates that photon paths in the radiator plate are well separated. Note that within a given order of reflection for a specific set of track parameters, the measured y' pixel coordinate is correlated to the Cherenkov photon energy, with the finite pixel size contributing to the chromatic uncertainty.

For those photon hits which had either no reflections off a side edge or which only had a reflection off the edge below the MCP-PMT

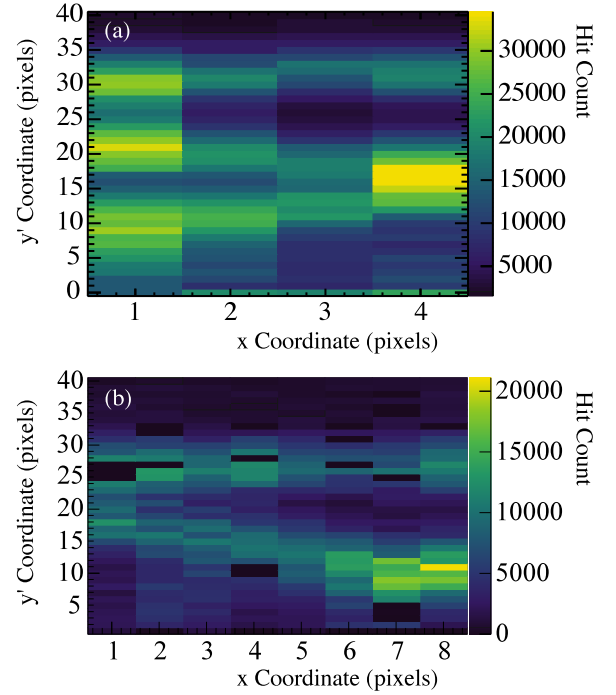


Fig. 6. Uncorrected MCP-PMT hit-maps for combined pions and protons showing (a) the 4×64 and (b) the 8×64 MCP-PMT (November 2017 and June 2018 test-beam periods, respectively). The black bins in (b) indicate a dead channel. Note that although both beam tests used an MCP-PMT with 64 pixels in the y' coordinate, the top part of the detector was not illuminated and so the distributions have been truncated.

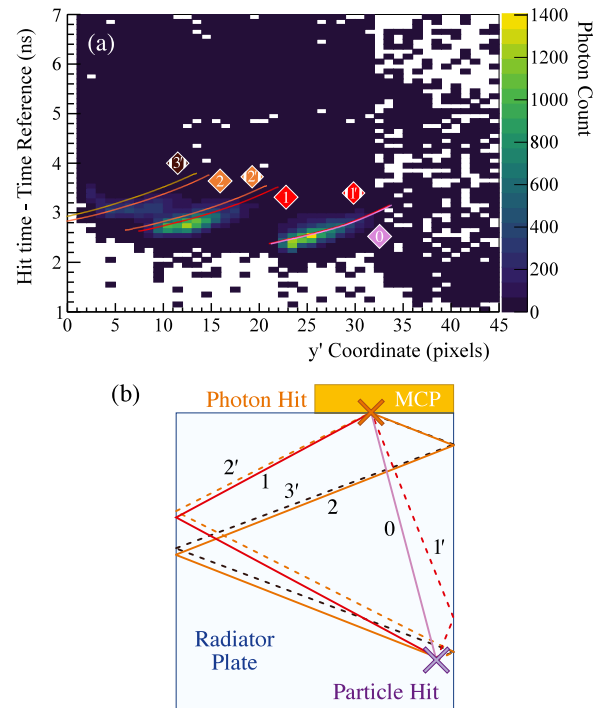


Fig. 7. (a) The distribution of detected photons as a function of y' (finely-granulated) pixel number and arrival time, for column 5 of the 8×64 MCP-PMT (see Fig. 6b). Here the selection is for protons. The three distinct peaks correspond to different orders of reflection off the sides of the radiator plate, and the overlaid lines show the predicted time of arrival for each order. The reduced population of hits for pixels beyond 32 is due to the different threshold settings for a pair of adjacent NINO chips which read out the MCP-PMT column. (b) A schematic of the photon paths assigned in the reconstruction which correspond to the overlaid lines in (a), labelled according to the number of photon side reflections. Paths first reflecting off the edge closest to the beam are shown by dotted lines, and their labels have primes.

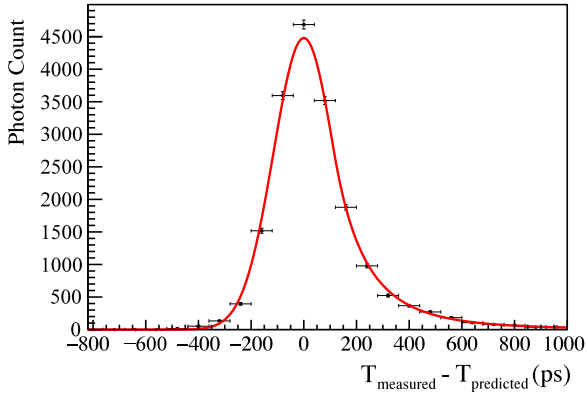


Fig. 8. An example residual distribution for orders of reflection 0 and 1', as indicated in Fig. 7b. The data are fitted with a Crystal Ball function with parameters $\mu = 0 \pm 1$ ps, $\sigma = 115 \pm 1$ ps, $\alpha = -1.01 \pm 0.03$, and $n = 4.5 \pm 0.4$ [17]. The contribution from the timing reference has not yet been subtracted. The tail is attributed to backscattering of primary photoelectrons in the MCP-PMT and possibly a small contribution from residual timewalk.

(corresponding to orders 0 and 1' in Fig. 7b), a residual distribution (i.e. the measured minus predicted times of arrival) is constructed. The residual distributions of individual bins in y' are first fitted to determine the resulting mean. These means are expected to be offset with respect to each other due to chromatic dispersion, and thus are corrected by offsetting the photon arrival times within each bin by the mean of the bin. Recombining the bins then gives the final fitted distribution. The sigmas are also dependent on photon energy, hence the measurements are averaged.

Fig. 8 shows an example of a residual distribution fitted with a ‘‘Crystal Ball’’ function, consisting of a Gaussian core with a power-law tail [17]. The tail models back-scattering of primary photoelectrons in the MCP-PMT and possibly a small contribution from residual timewalk, whilst the standard deviation of the Gaussian component is interpreted as the measured time resolution.

The time spread of the residual distribution, σ_{Total} , is a combination of several factors which must be subtracted in quadrature to give the intrinsic timing resolution. This is given by

$$\sigma_{\text{Total}}^2 = \sigma_{\text{TORCH}}^2 + \sigma_{\text{Beam}}^2 + \sigma_{\text{TimeRef}}^2, \quad (2)$$

where σ_{TORCH} is the intrinsic single-photon timing resolution which we wish to determine, σ_{Beam} is the spread in the residual distribution resulting from the finite width and divergence of the incident beam, and σ_{TimeRef} is the time resolution of the T2 station that provides the reference time for TORCH. The latter two contributions are discussed below.

The beam-spread contribution: The contribution to the time spread due to the beam profile, σ_{Beam} , is determined from simulation. The simulation is run with the spread in beam position and divergence as measured by the telescope, and then for a beam with no spread. In each case, a residual distribution is constructed the same way as for data, and the width of the two compared. The value of σ_{Beam} is found to be 14 ± 2 ps, where the quoted error accounts for the uncertainty on the beam profile and differences between the values measured for each MCP-PMT column.

The time reference contribution: The T2 station provides the time reference with respect to which the Cherenkov photons in TORCH are measured. The time resolution of the stations is demonstrated in Fig. 4, showing the (T2–T1) time difference in June 2018 data. The pion and proton beam contributions are clearly separated. To determine the resolution of the downstream station T2 independent of TORCH, it is assumed the behaviour of the pair of time reference stations T1 and T2 is identical before their signals propagate to the TORCH readout, however the timing of upstream station T1 is degraded due to ~ 11 m

Table 1

The single-photon time resolutions for pions measured for the 4×64 MCP-PMT in November 2017. The MCP column numbers match those shown in Fig. 6a. The quoted uncertainties are purely statistical.

MCP column	σ_{TORCH} (ps)
1	112.1 ± 1.4
2	114.8 ± 1.4
3	104.3 ± 1.4
4	111.4 ± 1.4

Table 2

The single-photon time resolutions for pions and protons measured for the 8×64 MCP-PMT in June 2018. The MCP column numbers match those shown in Fig. 6b. The quoted uncertainties are purely statistical.

MCP column	σ_{TORCH} Pions (ps)	σ_{TORCH} Protons (ps)
1	110.6 ± 1.2	112.7 ± 1.4
2	101.7 ± 1.2	110.6 ± 1.4
3	101.5 ± 1.2	110.6 ± 1.4
4	105.5 ± 1.2	106.2 ± 1.4
5	83.8 ± 1.3	91.0 ± 1.4
6	101.3 ± 1.2	103.4 ± 1.2
7	90.3 ± 1.2	87.5 ± 1.4
8	112.4 ± 1.1	102.8 ± 1.4

of cable length. When this contribution is isolated, the resolution of T2 is determined to be $\sigma_{\text{TimeRef}} = 43.4 \pm 1.5$ ps (pions) and 42.8 ± 2.0 ps (protons).

Using Eq. (2), the time resolution σ_{TORCH} is determined separately for each MCP-PMT column and for each incident particle species. Unfortunately a significant pollution of pions is observed in the proton sample for the November 2017 dataset due to the Cherenkov counters being non-optimally tuned, so only photons resulting from an identified pion are used in this case. This results in four measurements for the 4×64 MCP-PMT, presented in Table 1, and 16 for the 8×64 , shown in Table 2.

The measurements from the two test-beam periods are generally similar, with resolutions σ_{TORCH} between 100 and 110 ps typically observed. The overall trend of enhanced performance in the 8×64 MCP-PMT with respect to the 4×64 is attributed to the improved resolution in the x -direction due to the doubling of the number of pixel columns. Columns 5 and 7 stand out in particular for the 8×64 MCP-PMT data, with measured resolutions of order 90 ps. This results from the application of better calibration corrections for these columns. It is noted that six of the eight columns for the 8×64 MCP-PMT give better resolutions for pions than protons, an effect which is attributed to a residual pion pollution in the proton sample in the June 2018 data. In this case a fraction of pions will be falsely reconstructed as protons, resulting in an incorrect predicted time.

As indicated in Fig. 7a, orders 0 and 1 cannot be distinguished in data. The difference in time of arrival between the two orders from the simulation ranges from 5–30 ps, varying with the x -position of the hit. This will widen the residual distribution, and leads to a slightly degraded time resolution being measured than with only a single order of reflection. However, as the effect is photon-energy dependent, no attempt has been made to subtract this contribution.

Incorporating a charge-to-width calibration for the NINO in addition to the data-driven approach here employed would allow a charge-weighted average of the time and position of each cluster to be determined. This would improve the resolution further, and closer to the desired 70 ps.

6. Photon counting

The photon counting efficiency of the demonstrator is determined by counting the number of detected clusters and comparing to the number expected in simulation. Monte Carlo samples corresponding

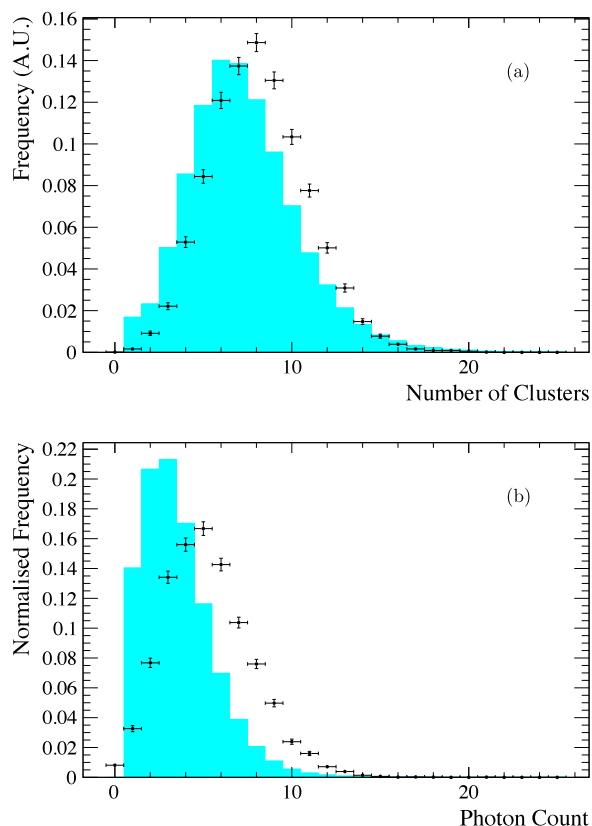


Fig. 9. The number of clusters seen in data (histograms) and simulation (points) for (a) the 4×64 and (b) the 8×64 MCP-PMT. The smaller number of photons observed in simulation for the 8×64 is due to its lower quantum efficiency.

Table 3

The arithmetic means of the photon-yield distributions shown in Fig. 9 and the ratio of data compared to simulation. The quoted uncertainties are purely statistical.

MCP-PMT	Data	Simulation	Ratio
4×64	7.37 ± 0.03	8.12 ± 0.03	0.908 ± 0.005
8×64	3.53 ± 0.02	5.27 ± 0.03	0.670 ± 0.005

to 10000 incident pions at 5 GeV/c were used for each detector configuration. Fig. 9 shows the distributions of number of photons seen and expected in data and simulation, respectively, for the two MCP-PMT arrangements. The arithmetic mean numbers of measured photons are compared in Table 3. A negligible difference is observed in counting efficiency between pions and protons, hence no selection is made in the data based on the species.

The reduced number of clusters observed for the 8×64 MCP-PMT with respect to the 4×64 device in both data and simulation is expected, given that the 8×64 device has a significantly lower quantum efficiency (as seen in Fig. 2). The photon yield in the 4×64 MCP-PMT agrees within 10% of the simulation, however for the 8×64 device, a $\sim 30\%$ loss in data is observed. The yields depend strongly on the MCP-PMT gains and the NINO thresholds, the best estimates of which were used in the simulation.¹ The observed discrepancies are attributed to uncertainties due to small signals arising from charge sharing, for which the systematics from the NINO threshold values are significant. Future laboratory work will therefore focus on improving the efficiency and calibration of the MCP-PMTs and the electronics.

¹ The gain of the 4×64 has been measured to be 1.8×10^6 electrons, whilst the nominal value of the gain for the 8×64 is 1.0×10^6 electrons, taken from the Photek data sheet. These values were used respectively, along with a NINO threshold value of 30 fC.

7. Summary and future plans

Studies of a small-scale TORCH demonstrator with customised MCP-PMTs and readout electronics have been performed during two test-beam periods in November 2017 and June 2018. Single-photon time resolutions ranging from 104.3 ps to 114.8 ps and 83.8 ps to 112.7 ps have been measured for MCP-PMTs of granularity 4×64 and 8×64 , respectively. The improvement for the 8×64 is attributed to its factor two increase in granularity. The measurements are within 30–40% of the 70 ps targeted. The photon yields show a strong dependence on the MCP-PMT quantum efficiency, and also highlight future work that is required to better understand the factors associated with the operational parameters of the MCP-PMT, the properties of charge sharing, and the calibration of the readout electronics.

A half-sized LHCb demonstrator module with a $660 \times 1250 \times 10$ mm³ radiator plate has been constructed and is currently being evaluated [18]. The demonstrator has been instrumented with the same 8×64 MCP-PMT and readout electronics as for the June 2018 beam test, alongside a second identically-configured 8×64 MCP-PMT with an improved quantum efficiency. This will allow timing resolution studies and photon-yield measurements with improved photon statistics. Analysis is underway and will be the subject of a future paper.

Declaration of competing interest

The authors declare that they have no known competing financial interests or personal relationships that could have appeared to influence the work reported in this paper.

CRediT authorship contribution statement

S. Bhasin: Investigation. **T. Blake:** Investigation, Formal Analysis. **N. Brook:** Supervision, Project Administration. **T. Conneely:** Resources. **D. Cussans:** Resources. **R. Forty:** Conceptualization, Methodology, Project Administration. **C. Frei:** Resources. **E.P.M. Gabriel:** Investigation, Formal Analysis. **R. Gao:** Resources. **T. Gershon:** Supervision. **T. Gys:** Project Administration, Methodology, Investigation, Data curation. **T. Hadavizadeh:** Investigation, Software. **T.H. Hancock:** Investigation, Data curation, Visualization, Formal Analysis, Software, Writing - original draft, Writing - review & editing. **N. Harnew:** Project Administration, Funding Acquisition, Supervision, Writing - review & editing. **M. Kreps:** Supervision. **J. Milnes:** Resources. **D. Piedigrossi:** Resources. **J. Rademacker:** Supervision, Project Administration. **M. van Dijk:** Methodology, Investigation, Software.

Acknowledgements

The support is acknowledged of the Science and Technology Research Council, UK, (grant number ST/P002692/1) and of the European Research Council through an FP7 Advanced Grant (ERC-2011-AdG 299175-TORCH). The authors wish to express their gratitude to the CERN EP-DT-EF group, Simon Pyatt of the University of Birmingham, and to Gale Lockwood of the University of Oxford/RAL for their efforts in wire bonding the NINO chips. We also thank Andre Rummeler for his support on the test-beam telescope. We are grateful to Nigel Hay, Dominic Kent and Chris Slatter of Photek, and to Jon Lapington of the University of Leicester for their work on the MCP-PMT development. TB acknowledges support from the Royal Society, UK.

References

- [1] M. Charles, R. Forty, TORCH: Time of flight identification with Cherenkov radiation, Nucl. Instrum. Methods Phys. Res. A 639 (2011) 173–176.
- [2] N. Brook, et al., Testbeam studies of a TORCH prototype detector, Nucl. Instrum. Methods Phys. Res. A 908 (2018) 256–268.
- [3] I. Adam, et al., The DIRC particle identification system for the BABAR experiment, Nucl. Instrum. Methods Phys. Res. A 538 (2005) 281–357.
- [4] T. Abe, et al., Belle II Technical Design Report, 2010, arXiv:1011.0352.

- [5] J. Fast, The Belle II imaging time-of-propagation (iTOP) detector, Nucl. Instrum. Methods Phys. Res. A 876 (2017) 145–148.
- [6] T. Conneely, et al., The TORCH PMT: a close packing, multi-anode, long life MCP-PMT for Cherenkov applications, J. Instrum. 10 (2015) C05003.
- [7] The LHCb Collaboration, LHCb Experiment, Physics case for an LHCb Upgrade II, Tech. Rep. LHCb-PUB-2018-009. CERN-LHCb-PUB-2018-009, CERN, Geneva, May 2018.
- [8] N. Harnew, et al., Status of the TORCH time-of-flight project, Nucl. Instrum. Methods Phys. Res. A (2018).
- [9] L. Castillo García, et al., Development, characterization and beam tests of a small-scale TORCH prototype module, J. Instrum. 11 (05) (2016) C05022.
- [10] F. Anghinolfi, et al., NINO: an ultra-fast and low-power front-end amplifier/discriminator ASIC designed for the multigap resistive plate chamber, Nucl. Instrum. Methods Phys. Res. A 533 (2004) 183–187.
- [11] A. Akindinov, et al., Design aspects and prototype test of a very precise TDC system implemented for the multigap RPC of the ALICE-TOF, in: Proceedings of the Seventh International Workshop on Resistive Plate Chambers and Related Detectors, Nucl. Instrum. Methods Phys. Res. A 533 (2004) 178–182.
- [12] R. Gao, et al., Development of TORCH readout electronics for customised mcps, J. Instrum. 11 (04) (2016) C04012.
- [13] J. Allison, et al., Recent developments in Geant4, Nucl. Instrum. Methods Phys. Res. A 835 (2016) 186–225.
- [14] I. Rubinskiy, An EUDET/AIDA pixel beam telescope for detector development, in: Proceedings of the 2nd International Conference on Technology and Instrumentation in Particle Physics (TIPP 2011), Physics Procedia 37 (2012) 923–931.
- [15] P. Baesso, et al., The AIDA-2020 TLU: a flexible trigger logic unit for test beam facilities, J. Instrum. 14 (09) (2019) P09019–P09019.
- [16] S. Liu, et al., LUT-based non-linearity compensation for BES III TOF's time measurement, Nucl. Sci. Tech. 21 (1) (2010) 49.
- [17] T. Skwarnicki, A study of the radiative cascade transitions between the epsilon-prime and epsilon resonances (Ph.D. thesis), Institute of Nuclear Physics, Krakow, 1986.
- [18] T.H. Hancock, et al., Beam tests of a large-scale TORCH time-of-flight demonstrator, Nucl. Instrum. Methods Phys. Res. A 958 (2019) 162060.