



Beam-beam effects on the luminosity measurement at LEP and the number of light neutrino species

Georgios Voutsinas^a, Emmanuel Perez^a, Mogens Dam^b, Patrick Janot^{a,*}

^a CERN, EP Department, 1 Esplanade des Particules, CH-1217 Meyrin, Switzerland

^b Niels Bohr Institute, University of Copenhagen, Blegdamsvej 17, 2100 Copenhagen, Denmark

ARTICLE INFO

Article history:

Received 13 August 2019

Received in revised form 14 September 2019

Accepted 14 September 2019

Available online 31 October 2019

Editor: L. Rolandi

Marking the 30th anniversary of the first Z detected at LEP on 13 August 1989

ABSTRACT

In e^+e^- collisions, electromagnetic effects caused by large charge density bunches modify the effective acceptance of the luminometer system of the experiments. These effects consequently bias the luminosity measurement from the rate of low-angle Bhabha interactions $e^+e^- \rightarrow e^+e^-$. Surprisingly enough, the magnitude of this bias is found to yield an underestimation of the integrated luminosity measured by the LEP experiments by about 0.1%, significantly larger than the reported experimental uncertainties. When accounted for, this effect modifies the number of light neutrino species determined at LEP from the measurement of the hadronic cross section at the Z peak.

© 2019 The Authors. Published by Elsevier B.V. This is an open access article under the CC BY license (<http://creativecommons.org/licenses/by/4.0/>). Funded by SCOAP³.

1. Introduction

The Large Electron-Positron (LEP) collider was operated at CERN between 1989 and 2000, and delivered e^+e^- collisions to four experiments, at centre-of-mass energies that covered the Z resonance, the WW threshold, and extended up to $\sqrt{s} = 209$ GeV. The first phase (LEP1), at and around the Z pole, provided a wealth of measurements of unprecedented accuracy [1]. In particular, the measurement of the hadronic cross section at the Z peak, σ_{had}^0 , has been used to derive the number of light neutrino species N_ν from

$$N_\nu \left(\frac{\Gamma_{\nu\nu}}{\Gamma_{\ell\ell}} \right)_{\text{SM}} = \left(\frac{12\pi}{m_Z^2} \frac{R_\ell^0}{\sigma_{\text{had}}^0} \right)^{\frac{1}{2}} - R_\ell^0 - 3 - \delta_\tau, \quad (1)$$

where R_ℓ^0 is the ratio of the hadronic-to-leptonic Z branching fractions; δ_τ is a small $\mathcal{O}(m_\tau^2/m_Z^2)$ correction; and $(\Gamma_{\nu\nu}/\Gamma_{\ell\ell})_{\text{SM}}$ is the ratio of the massless neutral-to-charged leptonic Z partial widths predicted by the Standard Model (SM). The combination of the measurements made by the four LEP experiments leads to [1]:

$$N_\nu = 2.9840 \pm 0.0082, \quad (2)$$

* Corresponding author.

E-mail addresses: georgios.gerasimos.voutsinas@cern.ch (G. Voutsinas), Emmanuel.Perez@cern.ch (E. Perez), dam@nbi.dk (M. Dam), Patrick.Janot@cern.ch (P. Janot).

<https://doi.org/10.1016/j.physletb.2019.135068>

0370-2693/© 2019 The Authors. Published by Elsevier B.V. This is an open access article under the CC BY license (<http://creativecommons.org/licenses/by/4.0/>). Funded by SCOAP³.

consistent within two standard deviations with the three observed families of fundamental fermions.¹ This observable is directly affected by any systematic bias on the integrated luminosity through σ_{had}^0 . Indeed, the integrated luminosity uncertainty saturates the uncertainty on σ_{had}^0 , and is the largest contribution to the N_ν uncertainty.

At LEP, the luminosity was determined by measuring the rate of the theoretically well-understood Bhabha-scattering process at small angles, $e^+e^- \rightarrow e^+e^-$, in a set of dedicated calorimeters (LumiCal), possibly completed with tracking devices, situated on each side of the interaction region. These luminometers covered polar angle ranges from about 25 to 60 mrad (29 to 185 mrad for DELPHI) from the beam axis. The Bhabha events were selected with a “narrow” acceptance on one side and a “wide” acceptance on the other, defined as shown in Table 1.

When the charge density of the beam bunches is large, beam-induced effects modify the effective acceptance of the LumiCal in a nontrivial way. The final state e^+ (e^-) in a Bhabha interaction, emitted at a small angle off the e^+ (e^-) beam, feels an attrac-

¹ The expression in Eq. (1) was chosen to minimize the dependence of N_ν on SM parameters. With up-to-date calculations of higher-order corrections to $(\Gamma_{\nu\nu}/\Gamma_{\ell\ell})_{\text{SM}}$ [2] and recent measurements of the Higgs boson and top quark masses, the number of light neutrino species slightly increases from 2.9840 to 2.9846. The more parameter-dependent global fit of Ref. [2], which also includes the Z width measurement and the world-average value of the strong coupling constant, yields $N_\nu = 2.991 \pm 0.007$, with a similar sensitivity to the LEP integrated luminosity [3].

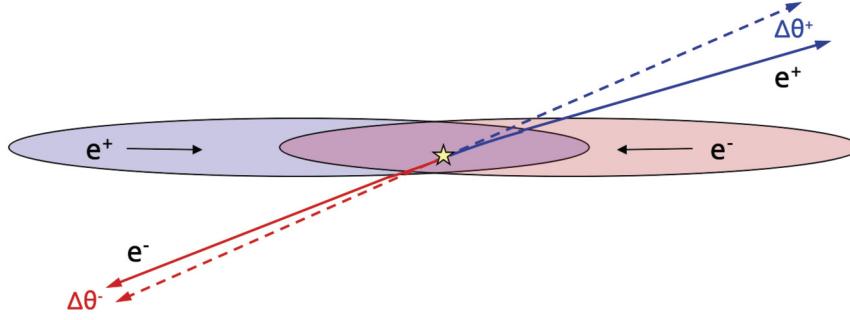


Fig. 1. Illustration of the effect of the focusing Lorentz force experienced by the charged leptons emerging from a Bhabha interaction. The dashed lines show the original direction of the leptons, while the full lines show their direction after the electromagnetic deflection induced by the opposite charge bunch.

Table 1

Wide and narrow acceptance for the second-generation LumiCals of the four LEP experiments between 1993 and 1995 (1994–95 for DELPHI).

Experiment	ALEPH [4]	DELPHI [5]	L3 [6]	OPAL [7]
Wide (mrad)	26.2–55.5	37.0–127.0	27.0–65.0	27.2–55.7
Narrow (mrad)	30.4–49.5	44.9–113.6	32.0–54.0	31.3–51.6

tive force from the incoming e^- (e^+) bunch, and is consequently focused towards the beam axis.² This effect, illustrated in Fig. 1, leads to an effective reduction of the acceptance of the LumiCal, as particles that would otherwise hit the detector close to its inner edge are focused to lower polar angles and may therefore miss the detector.

This effect has been first realised in the context of the International Linear Collider (ILC) design study [8]. A detailed analysis of beam-induced effects on the luminosity measurement at the Future Circular Collider (FCC) has been recently carried out and is reported in Ref. [9], together with methods to measure and correct for them. In the context of that study, it has been realised that these effects were already significant at LEP. As shown below, they lead to a bias of the measured luminosity of the order of 0.1%, which is large compared to the uncertainties reported by the experiments.³ Needless to say, beam-beam effects were already well-known at the time of LEP [10]. To our knowledge, however, this beam-induced bias of the luminosity measurement has not been taken into account by the LEP experiments.

In the study presented here, this bias is quantified with the Guinea-Pig code [11]. In Section 2, technical details are given on how this code is used to perform the numerical calculations. Detailed results of these calculations are presented in Section 3, for a representative situation corresponding to the OPAL luminosity measurement performed in 1994, during which half of the LEP data at the Z peak was collected. This illustrative example assumes a polar angle acceptance between $\theta_{\min} = 31.3$ mrad and $\theta_{\max} = 51.6$ mrad (Table 1), and the set of beam parameters given in the third row of Table 2.

The calculation is extended in Section 4 to the four LEP experiments and to the last three years of LEP1 operation (1993, 1994, and 1995), when the experimental precision of the integrated luminosity measurements was improved by up to one order of magnitude with the installation of second-generation LumiCals. A corrected number of light neutrino species from the combination

Table 2

Parameters for the LEP operation at the Z pole in 1993, 1994, and 1995, relevant for the determination of the beam-induced luminosity bias: number of particles per bunch (N), horizontal (σ_x) and vertical (σ_y) bunch sizes, longitudinal bunch length (σ_z), and values of the β function at the interaction point in the x and y directions. The number of particles per bunch and the bunch sizes are (instantaneous-luminosity-weighted) averaged over the year, as described in Section 5.

Year	N (10^{11})	σ_x (μm)	σ_y (μm)	σ_z (mm)	β_x^* (m)	β_y^* (cm)
1993	1.207	213.	$\sim 4.$	10.3	2.5	5.
1994	1.280	171.	$\sim 4.$	10.0	2.0	5.
1995	1.155	206.	$\sim 4.$	10.5	2.5	5.

of the LEP measurements is deduced. In Section 5, the systematic effects arising from the simplifying assumptions used to determine N_ν are evaluated and corrected for. A summary is given in Section 6.

2. Numerical calculations

The Guinea-Pig code [11] was initially developed in the mid-nineties to simulate the beam-beam effects and the beam-background production in the interaction region of (future) electron-positron colliders. The Guinea-Pig algorithm groups particles from the incoming bunches into macro-particles, slices each beam longitudinally, and divides the transverse plane into a “grid” of cells. The macro-particles are initially distributed over the slices and the grid, and are tracked through the collision. The fields are computed at the grid points at each step of this tracking. Here, the dimensions of the grid are defined to contain the $\pm 3\sigma_z$ envelope of the beam in the longitudinal direction, and the $\pm 3\sigma_x$ and $\pm 6\sigma_y$ intervals in the transverse dimensions. The number of cells (slices) are such that the cell (slice) size, in both the x and y dimensions (along the z axis), amounts to about 10% of the transverse (longitudinal) bunch size at the interaction point.

In the context of the studies reported in Ref. [8], the C++ version of Guinea-Pig was extended in order to track Bhabha events, provided by external generators, in the field of the colliding bunches. This version of Guinea-Pig is used here. An input Bhabha event is associated to one of the e^+e^- interactions, i.e., is assigned a spatial vertex and an interaction time according to their probability densities. The electron and positron that emerge from this Bhabha interaction are subsequently transported as they move forward: the final state e^- (e^+) potentially crosses a significant part of the e^+ (e^-) bunch, or travels for some time in its vicinity and, thereby, feels a deflection force.

Since the e^\pm that emerge from a Bhabha interaction are emitted with a non-vanishing, albeit small, polar angle, they may exit the grid mentioned above, designed to contain the beams and in which the fields are computed, before the tracking ends. For this reason, the program can also extend the calculations of the fields

² The “repelling” effect of the particle’s own bunch is negligible because, in the laboratory frame, the electric and magnetic components of the Lorentz force have the same magnitude but opposite directions. In contrast, the electric and magnetic forces induced by the opposite charge beam point in the same direction and thus add up.

³ The most precise determination, from the OPAL experiment [7], quotes an experimental uncertainty of 0.034% and a theoretical uncertainty of 0.054%.

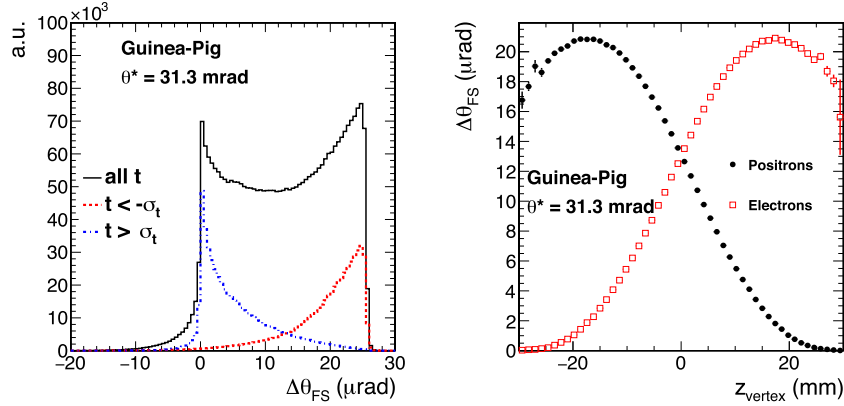


Fig. 2. Left: Distribution of the angular focusing $\Delta\theta_{FS}$ for 45.6 GeV electrons produced at $\theta^* = 31.3$ mrad, as predicted by Guinea-Pig, for (full black line) all events, (dash-dotted blue line) events corresponding to “late” interactions and (dashed red line) events corresponding to “early” interactions. The latter (former) interactions occur by definition at a time $t < -\sigma_t$ ($t > \sigma_t$), with $\sigma_t = \sigma_z/\sqrt{2}c$, the origin being given by the time when the centres of the two bunches coincide. Right: Average deflection of 45.6 GeV leptons emerging from a Bhabha interaction at $\theta^* = 31.3$ mrad, as a function of the longitudinal position of the vertex of the interaction, shown separately for the e^- (open squares) and the e^+ (closed dots). The e^+ beam moves towards the positive z direction.

to “extra” grids. For the settings used here, six extra grids are defined to sample larger and larger spatial volumes with accordingly decreasing granularity. The largest grid has equal dimensions in x and y , and a size twelve times larger than that of the first grid in x . It safely contains the trajectory of Bhabha electrons during the whole tracking time for the range in polar angle of interest here.

A numerical integration code has also been developed, which uses the Bassetti-Erskine formulae [12] for the field created by a Gaussian bunch to determine the average effects that a particle would feel. The particle is defined by its velocity and spatial coordinates at a given time t_0 . The momentum kick that it gets between t_0 and a later time is obtained by integrating the Lorentz force during this interval [13]. More details are given in Ref. [9].

3. Electromagnetic focusing of final state leptons in Bhabha events

The Guinea-Pig code is used in this section to estimate the focusing of final-states leptons, first for *leading-order* Bhabha events (i.e., without initial- or final-state radiation), with the 1994 LEP beam parameters given in Table 2. The corresponding luminosity bias is evaluated for the illustrative example of the OPAL LumiCal narrow acceptance, $31.3 < \theta < 51.6$ mrad. In what follows, the polar angle θ of the electron (positron) emerging from a Bhabha interaction is always defined with respect to the direction of the e^- (e^+) beam. The notation θ^* is used to denote the production angles in the frame where the initial e^+e^- pair is at rest, while θ^0 labels these angles in the laboratory frame. The Guinea-Pig simulation includes the intrinsic transverse momentum of the particles in the bunches, so that the initial e^+e^- pair is not strictly at rest in the laboratory frame, which in turn creates a smearing by a few tens of μrad around the θ^* production angle. The mean of $\theta^0 - \theta^*$ is zero irrespective of the kinematic properties of the event.

As depicted in Fig. 1, the electrons and positrons emerging from a Bhabha interaction experience the field of the opposite charge bunch. The left panel of Fig. 2 shows the distribution of the angular deflection $\Delta\theta_{FS}$ of 45.6 GeV electrons emitted at a fixed angle $\theta^* = 31.3$ mrad, as predicted by Guinea-Pig. It is defined as the difference between the polar angle of the outgoing electron before and after this deflection, $\Delta\theta_{FS} = \theta_0 - \theta$, where θ denotes the final polar angle, such that a positive quantity corresponds to a focusing deflection towards the beam direction.

For “late” interactions that occur after the cores of the two bunches have crossed each other, the final state e^\pm do not see

much of the e^\mp bunch charge and many of them are minimally deflected. On the contrary, for “early” interactions that take place when the two bunches just start to overlap, the emitted e^\pm travel through the whole e^\mp bunch and are largely deflected. These observations explain the two peaks seen in Fig. 2.

The right panel of Fig. 2 shows the average deflection of such electrons as a function of the interaction vertex position z_{vtx} . Here, the positrons have a positive momentum in the z direction, such that, when z_{vtx} is large and negative, they cross the whole electron bunch. In contrast, they see little charge from this bunch when z_{vtx} is large and positive, resulting in a vanishing deflection. The electron deflection follows a symmetric behaviour.

The left panel of Fig. 3 shows how the strength of the focusing strongly depends on the azimuthal angle ϕ of the electrons: it is maximal for electrons emitted vertically at $\phi = \pm\pi/2$ and smaller by about 30% for electrons emerging horizontally at $\phi = 0$ or $\phi = \pi$. This plot also shows that the Guinea-Pig simulation and the numerical integration mentioned in Section 2 are in agreement. The ϕ dependence reflects the fact that, since the bunches are flat with $\sigma_y \ll \sigma_x$, the electromagnetic field created by the bunches is much stronger along the y than along the x direction, as illustrated in the right panel of Fig. 3.

For electrons emerging close to the lower (upper) edge of the narrow LumiCal acceptance, the average deflection amounts to 12.81 μrad (11.19 μrad). The net effect is that the number of electrons detected in the LumiCal, in the range $\theta_{\text{min}} < \theta < \theta_{\text{max}}$, is smaller than the number of Bhabha electrons emitted within this range, which leads to an underestimation of the luminosity. From the expression of the counting rate of leading-order Bhabha events in the LumiCal,

$$N \propto \int_{\theta_{\text{min}}}^{\theta_{\text{max}}} \frac{d\theta}{\theta^3},$$

the bias induced by this angular deflection reads

$$\frac{\Delta N}{N} = \frac{-2}{\theta_{\text{min}}^{-2} - \theta_{\text{max}}^{-2}} \left(\frac{\Delta\theta_{FS}(\theta = \theta_{\text{min}})}{\theta_{\text{min}}^3} - \frac{\Delta\theta_{FS}(\theta = \theta_{\text{max}})}{\theta_{\text{max}}^3} \right), \quad (3)$$

which, numerically, leads to a bias of the measured luminosity by $\Delta L/L \simeq -0.1059\%$. This effect is larger than the experimental uncertainty of the luminosity measurement reported in Ref. [7] for 1994.

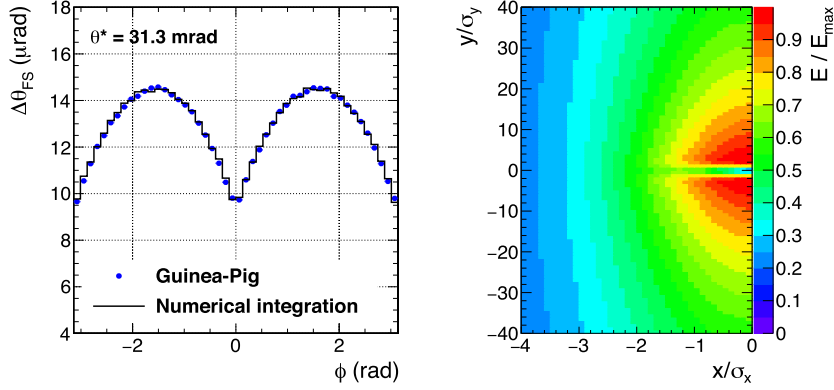


Fig. 3. Left: $\Delta\theta_{PS}$ for 45.6 GeV electrons produced at an angle $\theta^* = 31.3$ mrad, as a function of their azimuthal angle, as predicted by *Guinea-Pig* and by a numerical integration of the average Lorentz force felt by the electrons. Right: Electric field strength E created by a bunch in the laboratory frame, shown as a function of the (x, y) coordinates in any transverse cross section, and normalized to the maximum field strength E_{max} in this cross section.

To assess the effect of higher-order electroweak corrections (including initial-state and final-state radiation, ISR and FSR), a sample of about four million Bhabha events, produced with the *BHLUMI* 4.04 Monte-Carlo event generator [14], from which the LEP experiments determined their acceptance, was used to estimate a multiplicative “ k factor” on the luminosity bias. Both ISR and FSR lead to softer electrons and positrons in the final state, which thus experience a stronger focusing. This effect tends to increase the luminosity bias by typically 5%. In addition, ISR causes a longitudinal boost of the final-state leptons, resulting in a non-trivial effect on the effective LumiCal acceptance and therefore on the luminosity bias, which gets reduced by typically 1.5%. Finally, FSR photons are usually emitted at a small angle with respect to the final state leptons, and smear their direction symmetrically at larger and smaller angles, yielding a second-order effect on average. A clustering algorithm is likely to merge the electron and the radiated photon into a single cluster, thereby compensating for this small effect. An accurate evaluation of the latter, which would probably require the *BHLUMI* events to be processed through a full simulation of the LumiCal and a cluster reconstruction algorithm to be run on the simulated energy deposits, is therefore not crucial.

The ISR/FSR-corrected luminosity bias is determined here with *BHLUMI* events from the kinematic properties of the final-state charged leptons only. With a loose lower-energy cut of 5 GeV on the final-state leptons, a bias of -0.1126% is obtained. If it is required in addition, as in Ref. [7], that both leptons have an energy above $E_{beam}/2$; that the average of their energies exceed $0.75 \times E_{beam}$, with $E_{beam} = \sqrt{s}/2$; and that their acoplanarity $|\phi^+ - \phi^-| - \pi$ and acollinearity $|\theta^+ - \theta^-|$ be smaller than 200 and 10 mrad, respectively; the resulting bias amounts to -0.1113% , corresponding to a k factor of 1.051 with respect to leading-order Bhabhas.

4. Luminosity bias and impact on the measurement of the number of light neutrino species

The calculation presented in the previous section for OPAL in 1994 was repeated for the four experiments and the last three years of LEP1 operation (1993–1995). The corresponding angular ranges are shown in Table 1, and the LEP beam parameters are given in Table 2. The luminosity biases determined from these inputs by *Guinea-Pig* with leading-order Bhabha events are displayed in Table 3 for $\sqrt{s} = 91.2$ GeV. The multiplicative correction factor, arising from higher-order effects and energy/angular cuts, as discussed in the previous section, is also indicated. The larger

Table 3

Luminosity bias determined by *Guinea-Pig* with leading-order Bhabha events, for each of the four LEP experiments in 1993, 1994, and 1995, at $\sqrt{s} = 91.2$ GeV. The DELPHI entry in 1993 makes use of their first-generation LumiCal, with a narrow acceptance from 55.1 to 114.6 mrad [15]. The last line indicates the multiplicative k factor determined from *BHLUMI* with an emulation of the selection criteria of each experiment.

Year	ALEPH	DELPHI	L3	OPAL
1993	-0.0850%	-0.0389%	-0.0795%	-0.0829%
1994	-0.1092%	-0.0602%	-0.1018%	-0.1059%
1995	-0.0832%	-0.0469%	-0.0779%	-0.0809%
k factor	1.032	1.033	1.026	1.051

Table 4

Luminosity bias determined for each of the four LEP experiments at 89.4, 91.2, and 93.0 GeV. The error-weighted averages over the 1993, 1994, and 1995 periods account for the statistical and year-to-year uncorrelated systematic uncertainties [7, 16–18] on the luminosity measurements, as well as for the k factors of Table 3. The last column indicates the luminosity bias averaged over the four experiments at each energy, making use of the total experimental (statistical + systematic) and uncorrelated theoretical uncertainties.

$\langle\sqrt{s}\rangle$ (GeV)	ALEPH	DELPHI	L3	OPAL	LEP
89.446	-0.0889%	-0.0483%	-0.0823%	-0.0877%	-0.0809%
91.224	-0.1029%	-0.0561%	-0.0956%	-0.1064%	-0.0969%
93.003	-0.0855%	-0.0463%	-0.0791%	-0.0844%	-0.0781%

OPAL k factor arises from the tight acollinearity requirement, absent from the selection criteria of the other experiments, which compensates for the reduction due to the initial-state radiation boost.

The luminosity bias is proportional to the bunch population N and is found to scale with the horizontal bunch size like $\sigma_x^{-0.8}$, which explains the year-to-year variation. The dependence on the vertical bunch size σ_y and the bunch length σ_z is much milder, and amounts to about $\mp 1\%$ ($\mp 6\%$) when varying σ_y (σ_z) by $\pm 40\%$. The luminosity bias is also inversely proportional to the beam energy [9], as more energetic charged particles get less deflected by a given electromagnetic force. Each experiment collected data at the Z peak ($\langle\sqrt{s}\rangle = 91.224$ GeV) every year, but also off-peak data ($\langle\sqrt{s}\rangle = 89.446$ and 93.003 GeV) in 1993 and 1995, when the luminosity bias was smaller. The luminosity biases at each centre-of-mass energy, averaged over the three years, are listed in Table 4.

The number of light neutrino species was measured by each LEP experiment to be

$$\text{ALEPH} : N_\nu = 2.983 \pm 0.013, \quad [16] \quad (4)$$

$$\text{DELPHI} : N_\nu = 2.984 \pm 0.017, \quad [17] \quad (5)$$

$$\text{L3} : N_\nu = 2.978 \pm 0.014, \text{ [18]} \quad (6)$$

$$\text{OPAL} : N_\nu = 2.984 \pm 0.013, \text{ [19]} \quad (7)$$

including a fully correlated uncertainty of ± 0.0050 that comes from the common Bhabha cross-section theory error (± 0.0046), the uncertainty on the QED corrections to the Z lineshape (± 0.0016), and the uncertainty on $(\Gamma_{\nu\nu}/\Gamma_{\ell\ell})_{\text{SM}}$ (± 0.0013) [1]. An underestimation of the luminosity at the peak leads to an overestimation of σ_{had}^0 and, therefore, to an underestimation of N_ν (Eq. (1)), given by⁴:

$$\delta N_\nu \simeq -(7.465 \pm 0.005) \times \frac{\Delta L}{L} \Big|_{91.2 \text{ GeV}}. \quad (8)$$

The luminosity biases in Table 4 thus result in an increase of N_ν by $+0.00768$ in ALEPH, $+0.00419$ in DELPHI, $+0.00713$ in L3, and $+0.00794$ in OPAL, and yield an overall increase $\delta N_\nu = +0.00724$ of the LEP average, with respect to Eq. (2). It was checked (Section 5) that the data recorded in the 1990–1992 period has a negligible impact on this estimate, because of the very significantly larger luminosity uncertainties (by a factor of 5 to 10) in the early LEP period [20]. On the other hand, the most up-to-date calculation of higher-order corrections and the most recent measurements of the Higgs boson and top quark masses yield a small change in $(\Gamma_{\nu\nu}/\Gamma_{\ell\ell})_{\text{SM}}$ from 1.99125 ± 0.00083 [1] to 1.99083 ± 0.00025 [2]. When this change is included, the correction to N_ν increases by $+0.00063$ to $\delta N_\nu = +0.00787$, and N_ν benefits from a small uncertainty reduction. Altogether, the combination of the four LEP experiments for the number of light neutrino species becomes

$$N_\nu = 2.9919 \pm 0.0081. \quad (9)$$

Equivalently, the luminosity biases in Table 4 result in a reduction of the peak hadronic cross section, σ_{had}^0 , by -40 pb, from 41.540 ± 0.037 nb to 41.500 ± 0.037 nb. It is also interesting to note that the smaller luminosity bias for off-peak data (-0.0809% and -0.0781%) than for on-peak data (-0.0969%) causes the Z total decay width to slightly increase by $+0.3$ MeV, from 2.4952 ± 0.0023 GeV [1] to 2.4955 ± 0.0023 GeV. The Z mass is insignificantly modified by $+22$ keV. The correlations between the Z mass, the Z width, and the peak hadronic cross section remain untouched with respect to those given in Ref. [1]. Other electroweak precision observables (asymmetries, ratios of branching fractions) are not affected.

Crosscheck measurements of the Guinea-Pig calculations are in principle possible, by exploiting the focusing properties shown in Fig. 3 (left) and Fig. 2 (right). Unfortunately, the LEP statistics do not suffice to allow a data-driven determination of the luminosity bias. It would potentially be possible to see some evidence of the focusing effect by observing the ϕ modulation of the Bhabha counting rate resulting from the behaviour shown in Fig. 3. If the four experiments are combined, the significance of such a measurement would be about 0.8σ , assuming that potential misalignments of the luminometer system with respect to the interaction point can be corrected for.

It is also possible to define an asymmetry directly proportional to the luminosity bias. To do so, the sample of events selected for the luminosity measurement is split in two sub-samples, according to the sign of the z_{vtx} of the events.⁵ Four counts $N_{\pm,\pm}$ are

defined, representing the number of e^\pm (first subscript) measured in the narrow acceptance of one arm of the LumiCal in events with positive or negative z_{vtx} (second subscript). The geometrical change in acceptance induced by the different z_{vtx} selections can be corrected for on average. As shown in Fig. 2 (right), since the electrons with $z_{\text{vtx}} > 0$ are more deflected than electrons with $z_{\text{vtx}} < 0$, $N_{-,+} < N_{-,-}$, such that the asymmetry between these two numbers is proportional to the luminosity bias. The average between the asymmetries built from the electron counts $N_{-,\pm}$ and the positron counts $N_{+,\pm}$ would additionally allow misalignment effects to partially cancel. This asymmetry, which amounts to about 0.03%, can be observed with a significance of 1.4σ using the statistics collected by the four experiments.

At a future linear e^+e^- collider, a precise measurement of this asymmetry may be possible, thereby offering an experimental cross-check of the luminosity bias determined by the calculations. Ways to determine the bias at the future circular collider exploit the crossing angle with which the bunches collide, and are described in Ref. [9].

5. Systematic studies

A number of simplifying assumptions are made in the previous sections to derive the result presented in Eq. (9). In Table 2, the average luminosity-weighted number of particles per bunch N is inferred from measurements of bunch currents and instantaneous luminosities performed every 15 minutes and recorded in a private database [21]. This number was cross-checked to agree within a few per mil with an analytical calculation involving the mean value of the bunch current distributions in collisions [22,23], the average coast duration T [24] and the average luminosity lifetime τ .⁶ The average horizontal bunch size σ_x and bunch length σ_z are derived from the variance of the primary vertex position distribution, measured by the experiments [7,25,26]. The β^* values are taken from Ref. [24], and the vertical bunch size σ_y is obtained by the approximate relation $\sigma_y \sim \sigma_x \times \beta_y^*/\beta_x^*$ [10]. In all instances, it was assumed that all these beam parameters stayed constant over each year.

The corresponding potential systematic effects were studied as explained below, and are summarized in Table 5.

- The bunch current in collisions was measured with an uncertainty of $\pm 2\%$ [21], which translates directly to the luminosity bias.
- The average bunch currents for positrons differed from those for electrons by 6% to 8% [22,23], causing a luminosity-bias relative correction of $(-0.6 \pm 0.1)\%$.
- The horizontal bunch size and the bunch length agreed among the LEP experiments within 5%. The luminosity bias varies like $\sigma_x^{-0.8}$, and is therefore uncertain by $\pm 2\%$. The bias variation with σ_z is $\pm 0.4\%$.
- The vertical bunch size was too small to be measured reliably by the experiments. The relation used above to infer σ_y assumes that the horizontal and vertical beam-beam tune shifts $\xi_{x,y}$ were equal [27]. At LEP, this was only approximately the case, with ratios ξ_y/ξ_x of 1.3 or more [10]. Such a value causes σ_y to decrease by 30%, and the luminosity bias to relatively

⁴ This relation is rounded in Ref. [1] to $\delta N_\nu \simeq -7.5 \frac{\Delta L}{L}$.

⁵ The z_{vtx} of Bhabha events can be determined at LEP with a resolution of about 6 mm, from the intersection of the line joining the two clusters and the z axis in the (r, z) plane.

⁶ The average luminosity lifetime is obtained by requiring the average bunch currents of Refs. [22,23] to coincide every year with those computed from the average bunch currents measured at the beginning of the coasts [24]. The luminosity lifetime estimates ($\tau = 16.7$ hours in 1993, 15 hours in 1994, and 18 hours in 1995) are well-compatible with the relation $1/\tau = \xi_y/1 \text{ hour} + 1/\tau_0$ [22], with an average vertical beam-beam tune shift ξ_y of 0.027 in 1993, 0.034 in 1994, and 0.023 in 1995 [24], and with $\tau_0 = 30.4$ hours.

increase by +0.8%. An uncertainty of $\pm 0.4\%$ is assigned to this correction.

- The luminosity bias is, to first order, proportional to $N/\sigma_x^{0.8}$. It is determined above from the luminosity-weighted average of N and σ_x , but a time-dependent analysis would be in order. In the beam-beam limit, the luminosity, the emittances, and the product $\sigma_x\sigma_y$ approximately varied like the beam current [27], i.e., $\sim \exp(-t/\tau)$. The horizontal and the vertical bunch sizes therefore both varied like $\sim \exp(-t/2\tau)$. The relative effect of a time-dependent analysis can therefore be estimated by comparing the ratio of $\langle \exp(-t/\tau) \rangle$ to $\langle \exp(-t/2\tau) \rangle^{0.8}$ (time-independent), to $\langle \exp(-t/\tau) / \exp(-0.4t/\tau) \rangle$ (time-dependent), where $\langle \rangle$ means “luminosity-weighted average”. The time-dependent average is found to be 0.7% smaller. Because the above time dependence of the luminosity and the horizontal bunch size is only approximate, an uncertainty of half the correction is assigned to this estimate.
- The “technical” accuracy of Guinea-Pig can be evaluated by comparing the Guinea-Pig predictions with those of the independent numerical integration shown in Fig. 3. For $\theta_{\min} = 31.3$ mrad, the predictions of the average deflection $\langle \Delta\theta_{FS} \rangle$ agree within 0.4%. This comparison yields an uncertainty of $\pm 0.2\%$, to which a statistical uncertainty of $\pm 0.5\%$ is added to account for the size of the BHLUMI event samples used to determine the k factors.
- The values of β_x^* and β_y^* were made to vary by up to $\pm 20\%$, independently at each interaction point, to equalize the luminosities in the four experiments. The luminosity bias is found to be immune to such β^* changes (other things being equal).
- Non-Gaussian beam profiles and partial overlap of colliding bunches could also cause changes in the bias estimate. Regular “vernier” scans were performed to adjust the vertical overlap of the beams by varying in steps their vertical separation. The measured resulting beam-beam deflection [28] allowed the validity of the Gaussian beam profile assumption to be checked, and the vertical overlap Δy to be adjusted to better than $0.4 \mu\text{m}$, leading to negligible systematic effects.
- The acceptance of each of the LumiCals considered in Table 1 is rounded to the nearest tenth of a mrad, inducing a relative uncertainty of $\pm 0.2\%$ on the luminosity bias.
- The statistical, experimental, and theoretical uncertainties on the integrated luminosity, which enter the averaging procedure over all three years and all four experiments, were in general quoted in the LEP experiments’ publications in integer units of 10^{-5} , and sometimes 10^{-4} , for each LEP running period. The resulting uncertainty on the luminosity bias is evaluated to be $\pm 0.5\%$.
- Finally, only the period between 1993 and 1995 has been analysed at this point. The inclusion of the 1991–1992 period [16, 19, 29–31] causes the average luminosity bias to decrease by a relative -0.13% . The impact of the 1990 data is totally insignificant.

Other effects from, e.g., detailed electromagnetic shower simulation and clustering algorithms applied to final state e^\pm prior to applying energy and angular selection criteria, are not easy to estimate precisely, and would require the participation of the LEP experiments. Conservatively, an uncertainty of $\pm 5\%$ is assigned to these effects.

The relative correction on the luminosity bias of $(-0.6 \pm 5.8)\%$ (Table 5) yields a small decrease of δN_ν by $(-0.4 \pm 4.1) \times 10^{-4}$, which, everything considered, amounts to $\delta N_\nu = +0.00783 \pm 0.00041$. When this correction is applied, the final LEP combination for the number of light neutrino species becomes

Table 5

Summary of systematic corrections and uncertainties relative to the luminosity bias. Details can be found in the text.

Source	Systematic effect
Bunch currents	$\pm 2.0\%$
e^+/e^- imbalance	$-0.6\% \pm 0.1\%$
Horizontal bunch size	$\pm 2.0\%$
Bunch length	$\pm 0.4\%$
Vertical bunch size	$+0.8\% \pm 0.4\%$
Time dependence	$-0.7\% \pm 0.4\%$
Technical accuracy	$\pm 0.6\%$
β functions at IP	small
Bunch profiles	small
e^+/e^- bunch overlap	small
LumiCal acceptance	$\pm 0.2\%$
Averaging procedure	$\pm 0.5\%$
1990–1992 data	$-0.1\% \pm 0.0\%$
Other effects	$\pm 5.0\%$
Total	$-0.6\% \pm 5.8\%$

$$N_\nu = 2.9918 \pm 0.0081, \quad (10)$$

while the peak hadronic cross section and the Z width remain as indicated in Section 4.

6. Conclusions

The bias of the luminometer acceptance, induced by the focusing of the final state electrons and positrons from small angle Bhabha scattering by the opposite-charge bunches, has been quantified for the four experiments operating at LEP at and around the Z pole. The integrated luminosity at the peak has been found to be underestimated by about 0.1%, a bias larger than the uncertainty reported by the experiments in this period. When this bias is corrected for, the number of light neutrino species determined by the combined LEP experiments from the invisible decay width of the Z boson increases by 95% of its uncertainty. The corresponding long-standing 2σ deficit on N_ν is thereby reduced to about one standard deviation:

$$N_\nu = 2.9918 \pm 0.0081.$$

The luminosity biases at and off the Z peak have also been found to modify the hadronic cross section at the Z peak and the Z width, which become:

$$\sigma_{\text{had}}^0 = 41.500 \pm 0.037 \text{ nb},$$

$$\Gamma_Z = 2.4955 \pm 0.0023 \text{ GeV}.$$

No other electroweak precision observable is affected. This result has been obtained from averaged LEP operation parameters for each year of the 1990–1995 period. The effects of using averaged values rather than carrying out a time-dependent analysis have been evaluated to be negligible at the level of the current accuracy on the number of neutrino species. Measurements of selected LEP operation parameters have been performed every 15 minutes between 1989 and 2000. These measurements were partially recorded in a private database that still exists, which opens the possibility of a time-dependent analysis.

Acknowledgements

We are grateful to Daniel Schulte, Helmut Burkhardt, Gianluigi Arduini, Nicola Bacchetta, Konrad Elsener, Dima El Khechen, Mike Koratzinos, Katsunobu Oide, Dmitry Shatilov, and Jörg Wenninger, for very useful discussions, suggestions and input that they have brought into this work.

References

- [1] ALEPH, DELPHI, L3, OPAL, SLD, LEP Electroweak Working Group, SLD Electroweak Group, SLD Heavy Flavour Group, S. Schael, et al., Precision electroweak measurements on the Z resonance, *Phys. Rep.* 427 (2006) 257–454, arXiv:hep-ex/0509008.
- [2] Particle Data Group, M. Tanabashi, et al., Review of particle physics (in 'Electroweak Model and Constraints on New Physics', from J. Erler and A. Freitas), *Phys. Rev. D* 98 (2018) 030001.
- [3] J. Erler, A. Freitas, private communication.
- [4] ALEPH Collaboration, D. Buskulic, et al., Performance of the ALEPH detector at LEP, *Nucl. Instrum. Methods A* 360 (1995) 481–506.
- [5] T. Camporesi, V. Obraztsov, M. Paganoni, F. Terranova, M. Bigi, I. Gouz, et al., Luminosity measurement in 1994 with the STIC detector, <https://cds.cern.ch/record/2629467>, 1997.
- [6] I.C. Brock, A. Engler, T. Ferguson, F. Filthaut, R.W. Krämer, M. Merk, et al., Luminosity measurement in the L3 detector at LEP, *Nucl. Instrum. Methods Phys. Res., Sect. A* 381 (1996) 236–266.
- [7] OPAL Collaboration, G. Abbiendi, et al., Precision luminosity for Z^0 line shape measurements with a silicon tungsten calorimeter, *Eur. Phys. J. C* 14 (2000) 373–425, arXiv:hep-ex/9910066.
- [8] C. Rimbault, P. Bambade, K. Mönig, D. Schulte, Impact of beam-beam effects on precision luminosity measurements at the ILC, *J. Instrum.* 2 (2007) P09001.
- [9] G. Voutsinas, E. Perez, M. Dam, P. Janot, Beam-beam effects on the luminosity measurement at FCC-ee, *J. High Energy Phys.* 10 (2019) 225, arXiv:1908.01698.
- [10] D. Brandt, H. Burkhardt, M. Lamont, S. Myers, J. Wenninger, Accelerator physics at LEP, *Rep. Prog. Phys.* 63 (2000) 939–1000.
- [11] D. Schulte, Beam-beam simulations with GUINEA-PIG, CERN-PS-99-014-LP, <http://cds.cern.ch/record/382453>, 1999.
- [12] M. Bassetti, G.A. Erskine, Closed expression for the electrical field of a two-dimensional Gaussian charge, CERN-ISR-TH/80-06, <https://cds.cern.ch/record/122227>, 1980.
- [13] E. Keil, Beam-beam dynamics, CERN-SL-94-78-AP, in: *Advanced Accelerator Physics, Proceedings, 5th Course of the CERN Accelerator School*, vols. 1, 2, Rhodos, Greece, September 20–October 1, 1993, Conf. Proc. C9309206 (1993) 539–547, <https://cds.cern.ch/record/269336>.
- [14] S. Jadach, W. Placzek, E. Richter-Was, B.F.L. Ward, Z. Was, Upgrade of the Monte Carlo program BHLUMI for Bhabha scattering at low angles to version 4.04, *Comput. Phys. Commun.* 102 (1997) 229–251.
- [15] L. Bugge, T. Buran, A.L. Read, E. Wilhelmssen, The performance of the DELPHI SAT Tracker during 1991 and its contribution to the absolute luminosity measurement, https://inis.iaea.org/collection/NCLCollectionStore/_Public/25/050/25050129.pdf?r=1&r=1, 1994.
- [16] ALEPH Collaboration, R. Barate, et al., Measurement of the Z resonance parameters at LEP, *Eur. Phys. J. C* 14 (2000) 1–50.
- [17] DELPHI Collaboration, P. Abreu, et al., Cross-sections and leptonic forward backward asymmetries from the Z^0 running of LEP, *Eur. Phys. J. C* 16 (2000) 371–405.
- [18] L3 Collaboration, M. Acciarri, et al., Measurements of cross-sections and forward backward asymmetries at the Z resonance and determination of electroweak parameters, *Eur. Phys. J. C* 16 (2000) 1–40, arXiv:hep-ex/0002046.
- [19] OPAL Collaboration, G. Abbiendi, et al., Precise determination of the Z resonance parameters at LEP: 'Zedometry', *Eur. Phys. J. C* 19 (2001) 587–651, arXiv:hep-ex/0012018.
- [20] B. Pietrzyk, High precision measurements of the luminosity at LEP, in: LAPP-EXP-94-18, Proceedings, Tennessee International Symposium on Radiative Corrections: Status and Outlook, Gatlinburg, Tennessee, June 27–July 1, 1994, pp. 138–152, <http://cds.cern.ch/record/271909>.
- [21] H. Burkhardt, private communication.
- [22] H. Burkhardt, What is the maximum bunch current we can collide at 45 GeV?, CERN SL/95-08-DI, in: Proceedings of the Fifth Workshop on LEP Performance, Chamonix, January 13–18, 1995, <http://hbu.web.cern.ch/hbu/cham95mb.pdf>.
- [23] H. Burkhardt, Performance in physics, CERN SL/96-005-DI, in: Proceedings of the Sixth Workshop on LEP Performance, Chamonix, January 15–19, 1996, pp. 160–163, <http://hbu.web.cern.ch/hbu/cham96pp.pdf>.
- [24] G. Arduini, et al., LEP-1 operation, 1989–1995, in: Proceedings, 5th European Conference, EPAC 96, vols. 1–3, Sitges, Spain, Conf. Proc. C960610 (1996) 286–288, <https://cds.cern.ch/record/307303>.
- [25] M. Maggi, Measured primary vertex smearing values in ALEPH, http://aleph.web.cern.ch/aleph/aleph_general/kin/SVRT.html, 1999.
- [26] G.J. Barker, b-Quark Physics with the LEP Collider: The Development of Experimental Techniques for b-Quark Studies from Z^0 Decays, Springer Track in Modern Physics, vol. 236, 2010, p. 76.
- [27] H. Burkhardt, Beam-beam tune shift, emittance, and lifetime, CERN SL/94-06-DI, in: Proceedings of the Fourth Workshop on LEP Performance, Chamonix, January 17–21, 1994, pp. 413–419, <https://cds.cern.ch/record/261537>.
- [28] C. Bovet, M.D. Hildreth, M. Lamont, H. Schmickler, J. Wenninger, Luminosity optimisation using beam-beam deflections at LEP, CERN-SL-96-025-OP, in: Proceedings of the 5th European Conference, EPAC 96, vols. 1–3, Sitges, Spain, June 10–14, 1996, Conf. Proc. C960610 (1996) 325–327, <http://cds.cern.ch/record/306910>.
- [29] R. Bailey, T. Bohl, F. Bordry, H. Burkhardt, P. Collier, K. Cornelis, et al., LEP operation in 1993 with the Pretzel scheme, in: Proceedings of 4th European Particle Accelerator Conference, London, UK, 27 June–1 July 1994, p. 439 <https://cds.cern.ch/record/921985>, 1994.
- [30] DELPHI Collaboration, P. Abreu, et al., Improved measurements of cross-sections and asymmetries at the Z^0 resonance, *Nucl. Phys. B* 418 (1994) 403–430.
- [31] L3 Collaboration, M. Acciarri, et al., Measurement of cross sections and leptonic forward-backward asymmetries at the Z pole and determination of electroweak parameters, *Z. Phys. C* 62 (1994) 551–576.