

# Resonant and random excitations on the proton beam in the Large Hadron Collider for active halo control with pulsed hollow electron lenses

Miriam Fitterer, Giulio Stancari,\* and Alexander Valishev  
*Fermi National Accelerator Laboratory, Batavia, Illinois, USA*

Stefano Redaelli and Daniel Valuch  
*CERN, Geneva, Switzerland*

(Dated: September 26, 2019)

We present the results of numerical simulations and experimental studies about the effects of resonant and random excitations on proton losses, emittances, and beam distributions in the Large Hadron Collider (LHC). In addition to shedding light on complex nonlinear effects, these studies are applied to the design of hollow electron lenses (HEL) for active beam halo control. In the High-Luminosity Large Hadron Collider (HL-LHC), a considerable amount of energy will be stored in the beam tails. To control and clean the beam halo, the installation of two hollow electron lenses, one per beam, is being considered. In standard electron-lens operation, a proton bunch sees the same electron current at every revolution. Pulsed electron beam operation (i.e., different currents for different turns) is also considered, because it can widen the range of achievable halo removal rates. For an axially symmetric electron beam, only protons in the halo are excited. If a residual field is present at the location of the beam core, these particles are exposed to time-dependent transverse kicks and to noise. We discuss the numerical simulations and the experiments conducted in 2016 and 2017 at injection energy in the LHC. The excitation patterns were generated by the transverse feedback and damping system, which acted as a flexible source of dipole kicks. Proton beam losses, emittances, and transverse distributions were recorded as a function of excitation patterns and strengths. The resonant excitations induced rich dynamical effects and nontrivial changes of the beam distributions, which, to our knowledge, have not previously been observed and studied in this detail. We conclude with a discussion of the tolerable and achievable residual fields and proposals for further studies.

Keywords: High-energy accelerators and colliders; Nonlinear beam dynamics; Beam resonances; Beam control; Collimation

## I. INTRODUCTION

In circular accelerators and storage rings, beam quality can be affected by the interplay of external excitations with machine lattice. This work, through calculations and experiments, focuses on how a certain class of resonant excitations influences beam dynamics and to which extent these excitations can cause beam losses, emittance growth, or changes in the particle beam distributions. Besides their general relevance to the topic of complex nonlinear dynamics, these studies were motivated by the need to assess the effects of a pulsed hollow electron lens for active beam halo control.

Considering past, current and future high energy colliders, each new machine has represented a considerable leap in stored beam energy (Table I). Furthermore, recent measurements at the LHC show that the tails of the transverse beam distribution are overpopulated compared to a Gaussian distribution. This results in a considerable amount of energy being stored in the beam tails. In particular, in the case of the LHC, about 5% of the beam population is stored in the tails (i.e., above  $3.5\sigma$ , where  $\sigma$  is the standard deviation of the Gaussian beam core), compared to 0.22% in an ideal Gaussian dis-

tribution, leading to 19 MJ of stored energy for nominal LHC parameters and 34 MJ in the case of HL-LHC [7]. This leads to the conclusion that a mechanism is needed to deplete the beam tails in a controlled manner. Further information on the needs for halo control in LHC can be found in Ref. [8].

The most direct approach is to decrease the collimator gaps or to periodically scrape the tails. However, this is not feasible, as it would generate unacceptably large loss spikes and possibly component damage. Most promising are methods which increase the diffusion speed in the region of the halo particles, resulting in a smooth and continuous removal of the high amplitude tails, while leaving the core of the beam unperturbed. The diffusing halo particles are then intercepted by the collimation system and removed. This concept is also referred to as active halo control, designed to enhance a conventional passive system, which is still needed to robustly intercept the halo particles. An illustration of the concept is shown in Fig. 1.

In a recent review, the need for such an active halo control system for HL-LHC has been assessed, with the conclusion that it would considerably increase the operational margins and reduce the risks for machine protection [8]. In view of the need of active halo control for HL-LHC and for future high power accelerators, like HE-LHC and FCC-hh [9, 10], different active halo control methods have been studied [11]. The

\* Corresponding author. E-mail: [stancari@fnal.gov](mailto:stancari@fnal.gov)

TABLE I. Stored beam energy for a few examples of past, present and future colliders. New machines represents a leap in stored beam energy.

Collider	Tevatron (protons) [1]	LHC 2016 [2]	LHC nominal [3]	HL-LHC [4]	FCC [5, 6]
Beam energy [TeV]	0.98	6.5	7.0	7.0	50.0
Number of bunches	36	2220	2808	2748	10600
Number of particles per bunch	$2.90 \times 10^{11}$	$1.15 \times 10^{11}$	$1.15 \times 10^{11}$	$2.2 \times 10^{11}$	$1.0 \times 10^{11}$
Stored beam energy [MJ]	1.6	265.9	362.2	678.0	8480

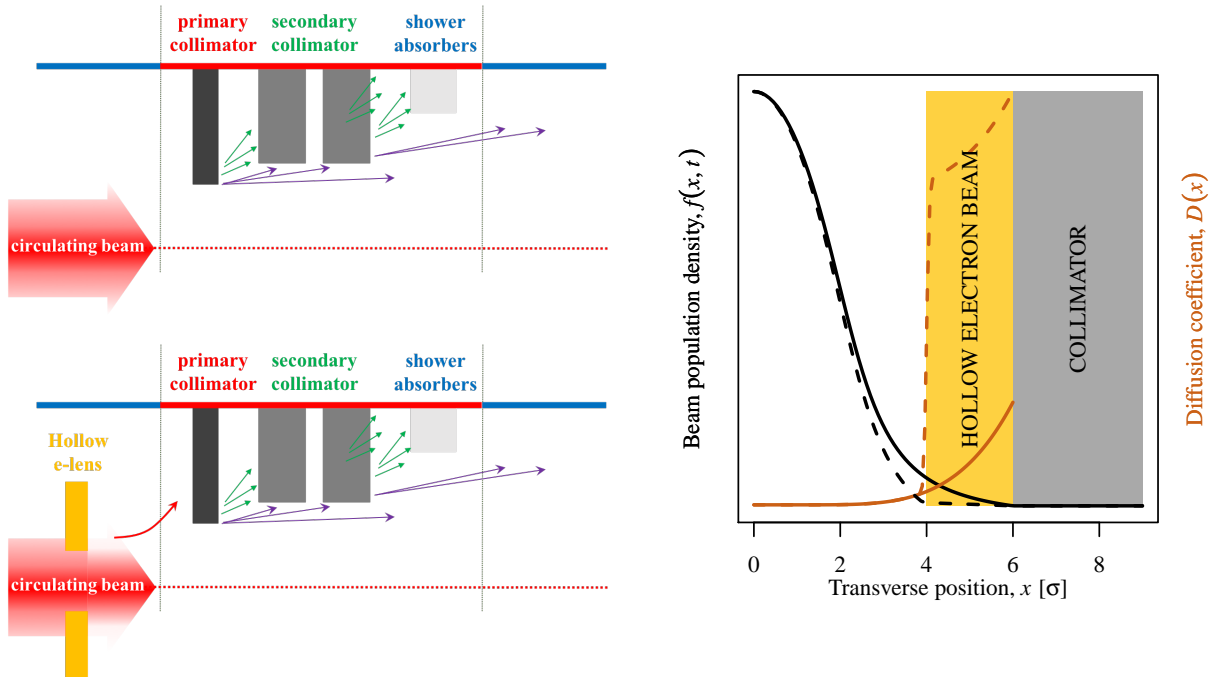


FIG. 1. Left: Sketch of passive halo control with a conventional collimation system (top) and active halo control, with the addition of a hollow electron lens (bottom). Right: Illustration of a simplified model of active diffusion enhancement in the transverse plane. The diffusion coefficient as a function of amplitude (orange) is enhanced in a specific amplitude region when the hollow beam is turned on (from solid to dashed line). A corresponding reduction in beam tail population (black) is created (from solid to dashed line).

hollow electron lens (HEL) is considered the most established, flexible and suitable technology for the HL-LHC [8, 12].

However, the beneficial effects of an HL-LHC HEL for machine protection and for collimation cannot come at the expense of performance degradation due to losses or emittance growth in the beam core. In standard electron-lens operation, a proton bunch sees the same electron current at every revolution. It is also possible to have different currents for different groups of bunches. Under these conditions, the imperfections of the hollow beam have a negligible effect. On the other hand, in order to extend the range of achievable removal rates, pulsed operation is also being considered. In this case, different currents can be set to act on the same bunch at each turn. If a residual field is present at the location of the beam core, core particles can be exposed to resonant transverse kicks and to noise.

In this paper, we concentrate on the experimental and numerical assessment of possible detrimental effects on the beam core of a pulsed electron lens. Section II gives an in-

roduction to the concept of HELs and summarizes the design parameters of the HL-LHC HELs. Section III is dedicated to the sources of residual fields from the HEL in the core region. Sections IV and V describe the experimental conditions and the setup of the numerical tracking simulations. Results and comparisons between simulations and measurements are given in Section VI, with discussion and summary in Section VII.

## II. HOLLOW ELECTRON LENS FOR HL-LHC

### A. General overview

Electron lenses are based upon continuous or pulsed low-energy, magnetically confined electron beams [15–18]. The electron beam is generated in an electron gun, guided and confined by strong solenoids and finally dumped in a collector. As an example, the conceptual design of the HL-LHC HEL is

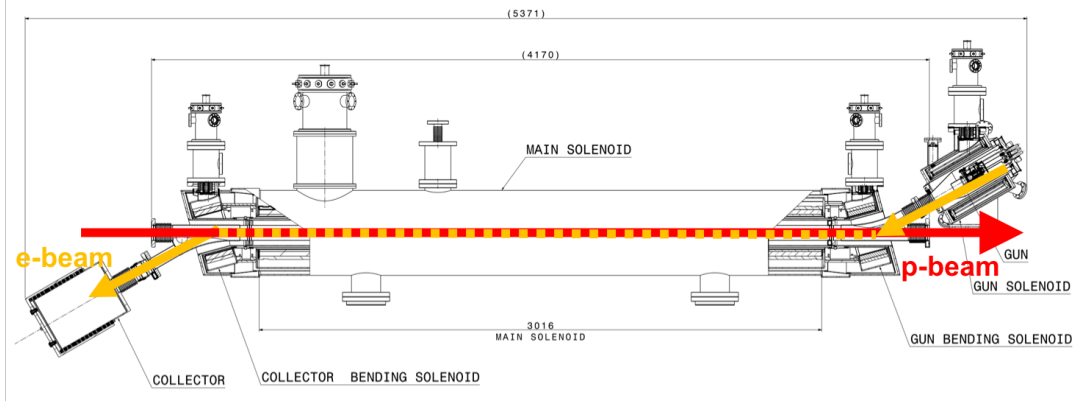


FIG. 2. Layout of the hollow electron lens for HL-LHC. (Courtesy of CERN EN-MME mechanical engineering group.)

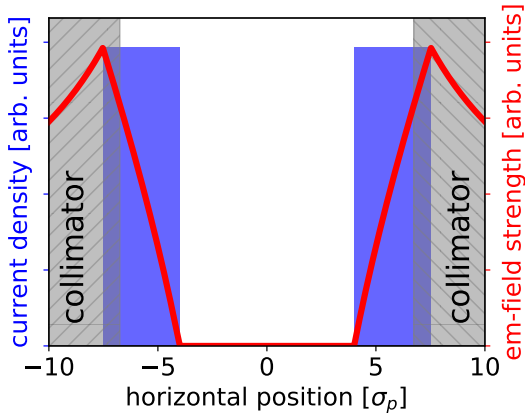


FIG. 3. Illustration of the hollow electron beam charge distribution (blue), of the magnitude of the transverse kick experienced by the proton beam (red), and of the position of the primary collimators (gray).

shown in Fig. 2.

The circulating beam (protons in the LHC case) is affected by the electromagnetic field of the electron beam. For the application of active halo control, the electron beam needs to generate an electromagnetic field only at the location of the halo particles. This field distribution can be achieved, for instance, by using a hollow charge distribution in radius  $r = \sqrt{x^2 + y^2}$ , uniformly distributed between inner radius  $R_1$  and outer radius  $R_2$  (Fig. 3). In this case, the circulating proton beam experiences the following radial kick  $\theta(r)$ :

$$\theta(r) = \frac{f(r)}{(r/R_2)} \cdot \theta_{\max}, \quad (1)$$

where  $f(r)$  is a shape function with

$$f(r) = \begin{cases} 0 & , \quad r < R_1, \\ \frac{r^2 - R_1^2}{R_2^2 - R_1^2} & , \quad R_1 \leq r < R_2, \\ 1 & , \quad R_2 \leq r \end{cases} \quad (2)$$

TABLE II. HL-LHC design parameters at top energy [4] and parameters relevant to the HEL. Optics parameters at the HEL are based on a position of  $-40$  m for Beam 1 (B1) and  $+40$  m for Beam 2 (B2) from the interaction point IP4, using HL-LHC optics V1.3 with  $\beta^* = 0.15$  m [13].

Beam parameters	Value		Unit
	B1	B2	
Beam energy, $E_p$	7		TeV
Number of bunches, $n_b$	2748		
Bunch population, $N_b$	$2.2 \times 10^{11}$		
Normalized emittance, $\epsilon_{N,x/y}$	2.5		$\mu\text{m}$
Bunch spacing	25		ns
Optics parameters at HEL (B1) <sup>a</sup>			
$\beta_x$ at HEL	197.5	280.6	m
$\beta_y$ at HEL	211.9	262.6	m
Dispersion $D_x$ at HEL	0.0	0.0	m
Dispersion $D_y$ at HEL	0.0	0.0	m
Proton beam size $\sigma_{p,x}$ at HEL	0.26	0.31	mm
Proton beam size $\sigma_{p,y}$ at HEL	0.27	0.30	mm
Scale of scraping positions			
$\sigma_p = \max(\sigma_{p,x}, \sigma_{p,y})$	0.27	0.31	mm

<sup>a</sup> As the Twiss parameters at IP4 do not change during the entire squeeze of the optical functions, and IP4 and the HEL are only separated by a drift space, the Twiss parameters stay constant also at the HEL during the squeeze.

and  $\theta_{\max} = \theta(R_2)$  is the maximum kick angle given by

$$\theta_{\max} = \theta(R_2) = \frac{2LI_T(1 \pm \beta_e \beta_p)}{4\pi\epsilon_0 \cdot (p_0/q)_p \cdot \beta_e \beta_p c^2} \cdot \frac{1}{R_2}, \quad (3)$$

with  $L$  the length of the HEL,  $I_T$  the total electron beam current,  $\beta_e$  and  $\beta_p$  the relativistic velocity parameters of electrons and protons,  $(p_0/q)_p = (B\rho)_p$  the magnetic rigidity for the proton beam reference particle,  $c$  the speed of light and  $\epsilon_0$  the vacuum permittivity. The  $\pm$ -sign in Eq. 3 represents the two cases of the electron beam traveling in the direction of the proton beam ( $v_e v_p > 0$ ) leading to “-” or in the opposite di-

TABLE III. HL-LHC hollow electron lens parameters, as defined in Ref. [14].

Geometry	Value	Unit
Length, $L$	3	m
Desired range of scraping positions	3.5–9.5	$\sigma_p$
Magnetic fields		
Gun solenoid, $B_g$	0.2–0.4	T
Main solenoid, $B_m$	2–6	T
Collector solenoid, $B_c$	0.2–0.4	T
Compression factor, $k \equiv \sqrt{B_m/B_g}$	2.2–5.5	
Electron gun		
Peak yield $I_e$ at 10 keV	5.0	A
Gun perveance, $P$	5	$\mu\text{A}/\text{V}^{3/2}$
Inner/outer cathode radii, $R_1/R_2$	6.75/12.7	mm
High-voltage modulator		
Cathode-anode voltage	10.0	kV
Rise time (10%-90%)	200	ns
Repetition rate	35	kHz

rection ( $v_e v_p < 0$ ) leading to “+”. For hollow electron beam collimation, electrons and protons are chosen to counterrotate, so that the magnetic and electric kicks add up. (For simplicity, the dependence of the electron axial velocity on radius is neglected in Eq. 3.)

In the case of HL-LHC HEL design parameters (Table II and Table III), the maximum kick is:

$$\theta_{\max, B1} = 392 \text{ nrad} \quad (4)$$

for an inner radius of  $R_1 = 4\sigma_p$ , outer radius  $R_2 = 7.5\sigma_p$ , peak current of  $I_e = 5.0$  A, using the Beam 1 lattice of the LHC. Similar values are obtained for Beam 2.

### B. Operation modes and effects on the beam core

For the HEL, two modes of operation are currently under consideration: the continuous mode (also referred to as ‘DC’, or direct current, in this paper) as standard operation mode, described above; and the pulsed mode. The main benefit of pulsed HEL operation is the increase in halo removal rates. A wider range of removal rates may become important under operating conditions with small nonlinearities, in particular low chromaticity and octupole current, when the DC mode may be too slow [19, 20].

Two different pulsing patterns are considered for the HL-LHC. In both cases, at each passage, a given bunch sees a different electron-lens current and, therefore, experiences a different transverse kick. The patterns are defined as follows:

- **random excitation:** The extraction voltage in the electron gun is modulated according to the following expression:

$$U_{e\text{-gun}} = (1 - a) \cdot U_{\max} + a \cdot \eta \cdot U_{\max}, \quad (5)$$

where  $U_{\max}$  is the maximum voltage,  $a$  is the modulation strength, with  $a \in [0, 1]$ , and  $\eta$  is a uniformly distributed random number in the interval  $[0, 1]$ . Simulations and experiments, discussed below, were usually conducted with  $a = 1$ .

- **resonant excitation:** The electron beam is switched on only every  $k$ th turn. The excitation can be represented by the following expression:

$$f(t) = \sum_{n=-\infty}^{+\infty} \delta[t - n \cdot (kT)], \quad (6)$$

where  $n$  is the turn number and  $T$  is the revolution period. Its Fourier representation is

$$f(t) = \text{III}_{kT}(t) = \frac{1}{kT} \sum_{n=-\infty}^{+\infty} e^{2\pi i f_n t}, \quad (7)$$

with  $f_n = n \cdot f_{\text{rev}}/k$  and where  $\text{III}_{kT}$  is the Dirac comb. In general,  $k$ th-turn pulsing drives  $k$ th-order resonances [21]. This type of pulsing pattern was used in the Tevatron during regular collider operations for abort-gap cleaning [22].

For an axially symmetric electron lens, the field at the beam core vanishes. Effects on the proton core arise from imperfections, with two main sources: the injection and extraction bends of the HEL (discussed below in Section III A), where the electron beam crosses the proton beam; and distortions of the electron beam profile during its propagation under magnetic focusing and space charge (Section III B). Both sources result in nonlinear kicks [23, 24]. In continuous operation, these nonlinear kicks are usually much smaller than the machine nonlinearities. Tolerances on imperfections are therefore not particularly stringent. The picture changes significantly in case of pulsed operation. If the electromagnetic field does not vanish at the proton beam core, noise or resonant kicks are transferred not only to the halo particles, as intended, but also to the beam core. Tolerances on the residual fields in this case become much more stringent. Studies of the effects of the HEL on the beam core therefore focus on this mode of operation, which is also the main subject of this paper.

### III. SOURCES AND ESTIMATES OF RESIDUAL FIELDS

Parasitic kicks on the proton beam core can be due to electron-beam profile imperfections in the overlap region, or to the injection and extraction toroidal bends, where electrons and protons overlap, as shown in the layout of Fig. 2.

Because no HEL is currently installed in the LHC, the kicks on the proton beam core must be emulated by other devices to determine their effects experimentally in a given machine and

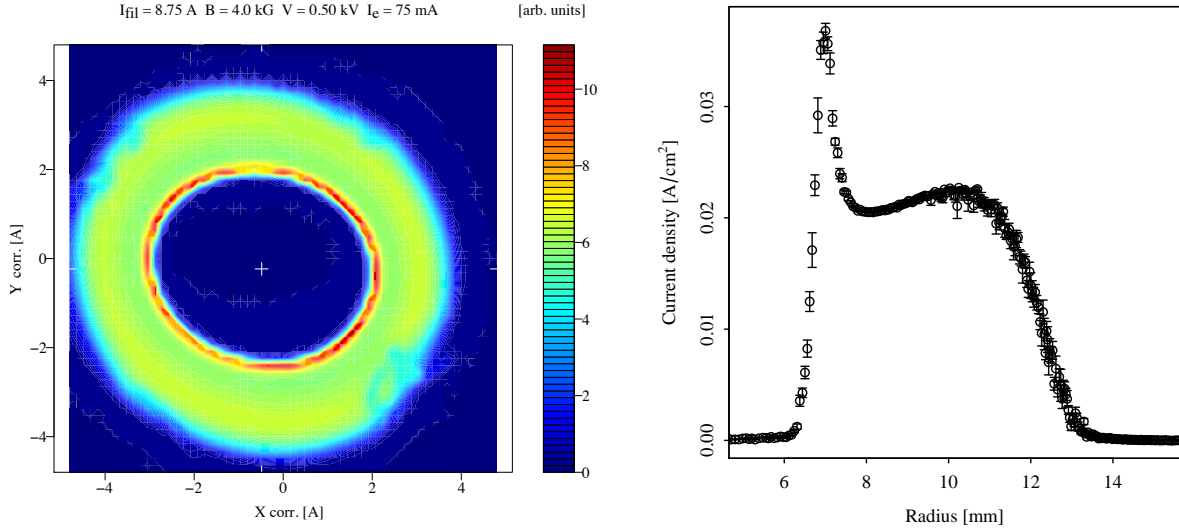


FIG. 4. Example of current-density distribution measurements for the hollow electron gun prototype CHG1b, taken at the Fermilab electron lens test stand in 2017 [25]: 2-dimensional transverse profile measurement (left) and calculated 1-dimensional radial projection (right).

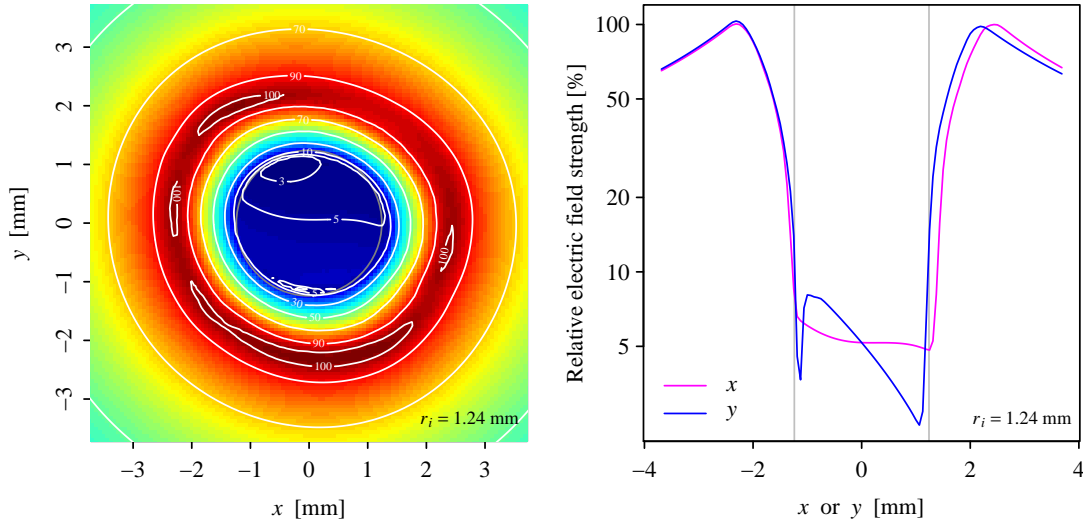


FIG. 5. Calculated relative electric field for the hollow electron gun CHG1b in the transverse  $x$ - $y$  plane (left) and as 1-dimensional cuts through the  $x$  and  $y$  axes (right). The field calculations are based on measurements at the Fermilab electron-lens test stand combined with WARP calculations of the electric potentials and fields in a cylindrical beam pipe.

to guide design and tolerances. In particular, during the experiments presented in this paper, the LHC transverse damper system (described in detail in Section IV B) was used for this purpose. This system can generate transverse dipole kicks with a wide range of excitation patterns.

For comparison with experiments and simulations, here we estimate to first order the magnitude of the dipole kicks that may be expected from the HEL. As one can see below, the contribution from the central region is in general dominating.

#### A. Kicks from injection and extraction bends

To estimate the dipole component of the kicks that originate from the injection and extraction bends, we used the approach described in Ref. [23]. The bends are modeled as a bent cylindrical pipe with a static charge distribution of electrons. The resulting electric field is calculated, with the vacuum pipe as boundary, using the solvers of the WARP particle-in-cell code [26, 27]. (The contribution of the magnetic field generated by the electron current was neglected in this study.) The field, integrated over the trajectory of the protons, is then

translated into a symplectic kick map.

In case of a U-shaped electron lens, where electron gun and collector are on the same side, the transverse (and possibly pulsed) dipole kicks generated by the electron charge at the entrance and exit add up. For an S-shaped electron lens, on the other hand, where gun and collector are on opposite sides, these kicks compensate each other. For this reason, an S-shape was chosen for the HL-LHC HEL (Fig. 2). A disadvantage of the S-shape is that the static magnetic kicks due to the toroidal sections do add up, but they can be compensated by conventional dipole correctors, especially in a high-energy machine.

In the case under study of an S-shaped electron lens, residual uncompensated kicks arise from differences in electron charge distribution between the injection and extraction bends. Here we conservatively assume 10% fluctuations between the entrance and exit and, furthermore, that these differences add up.

The maximum values of the integrated electric fields calculated in Ref. [23], based upon an electron beam of 1 A at 5 keV, are

$$\int_{z_1}^{z_2} E_{x,y} dz = 10 \text{ kV}. \quad (8)$$

Scaling to HL-LHC and HEL design parameters (Table II and Table III) yields the following integrated field and corresponding kick:

$$\int_{z_1}^{z_2} E_y dz = 36 \text{ kV} \Rightarrow \Delta y' = 5.1 \text{ nrad}, \quad (9)$$

as described in detail in Ref. [21]. Assuming a residual difference of 10% between entrance and exit, the expected kick is approximately

$$\Delta x', \Delta y' = 0.5 \text{ nrad}. \quad (10)$$

### B. Kicks in the central overlap region

For a perfectly annular and axially symmetric electron beam profile, the electromagnetic field in the region of the proton beam core vanishes. This is expressed by Eq. 2 and is illustrated in Fig. 3. Fields at the location of the proton beam core can arise if the axial symmetry is broken.

Recently, a hollow electron gun prototype for the LHC (called CHG1b) was characterized at the Fermilab electron lens test stand [28]. An example of a measurement of the electron beam current density is shown in Fig. 4.

In the test stand, only resistive solenoids are available. One can estimate the fields generated by the compressed electron beam profile in the superconducting solenoids of the HL-LHC HEL using a combination of experimental measurements and calculations.

Experimentally, it was verified that the current-density profiles scale with electron beam current and confining axial field

according to space-charge evolution [25, 29]. Specifically, the same profile is obtained for a given family of experimental conditions with constant ratio  $\sqrt{V}/B$ , where  $V$  is the accelerating voltage and  $B$  is the axial field. This ratio is proportional to the space-charge evolution number  $g = \omega_D \cdot \tau \propto \sqrt{V}/B$ , representing the number of  $\vec{E} \times \vec{B}$  rotations in the propagation time  $\tau$ , with  $\omega_D \equiv \omega_p^2/(2\omega_c)$  the diocotron frequency,  $\omega_p$  the plasma frequency, and  $\omega_c$  the cyclotron frequency of the magnetically confined electrons in the solenoid [30].

For a given HL-LHC HEL configuration, the corresponding current-density profile measured in the Fermilab test stand is used as input to calculate the electromagnetic fields. For the purpose of estimating the residual fields, the measured distribution is compressed to the inner electron beam radius of 1.24 mm, corresponding to  $4\sigma_p$ , as described in Table II and Table III. A distribution with about 65000 particles is generated according to the measured current-density profile. As boundary condition, the LHC inner beam pipe radius  $b = 30$  mm is used. The potential and fields are then calculated with WARP [26, 27]. The resulting relative electric field strengths are shown in Fig. 5. The electric field is obviously proportional to the charge density of electrons. Its relative strength is rather insensitive to the hollow beam radii, as long as these remain small compared to the beam pipe radius. Further details on the measurements and WARP simulations can be found in Ref. [25].

Using these measurements and calculations of the relative electric field strengths in the transverse plane (Fig. 5), we obtain a median field in the hole of

$$\langle E_{\text{hole}} \rangle / E_{\text{max}} = 5\%. \quad (11)$$

For a maximum kick of 392 nrad, as derived in Eq. 4, the estimated dipole kick amplitude at the proton beam core is therefore approximately

$$\Delta x', \Delta y' = 20 \text{ nrad}. \quad (12)$$

The relative magnitude of the residual field depends on several factors, including cathode quality, electron gun geometry, solenoid field configuration, space-charge evolution, etc. It can be improved, if needed.

For the purposes of this paper, only the approximate magnitude of the residual dipole kick is considered. In general, the field map, including its multipolar components, can be parameterized in symplectic form, as described for instance in Ref. [23], and used in tracking codes to estimate the effects on the circulating beam.

TABLE IV. Beam parameters and machine configuration for the two resonant excitation experiments of 2016 and 2017 [31, 32]. The plane of the excitation is abbreviated as H for horizontal, V for vertical and H+V for horizontal and vertical at the same time. MOF and MOD refer to the focusing and defocusing Landau octupoles.

Parameter	Experiment 2016	Experiment 2017
beam		Beam 1
beam energy		injection energy, 450 GeV
single bunch intensity		$0.7 \times 10^{11}$
normalized emittance		2.5–3.5 $\mu\text{m}$
$4\sigma$ bunch length		1.3 ns
$1\sigma$ bunch length		9.7 cm
number of bunches	$12 \times 4 = 48$	$3 \times 72 = 216$ (+ 1 pilot + 12 nominal)
injection optics, $\beta^* = 11$ m	standard optics 2016	standard optics 2017
Landau-damping octupoles		$I_{\text{MO}} = +19.6$ A for MOF circuit and $I_{\text{MO}} = -19.6$ A for MOD circuit (standard 2016 settings)
working point ( $Q_x, Q_y$ )	(64.28, 59.31)	(62.27, 60.295)
chromaticity ( $Q'_x, Q'_y$ )		(+15, +15)
pulsing patterns	7th turn H 10th turn V	7th turn H, V, H+V 8th turn H, V, H+V random H, V, H+V

## IV. EXPERIMENTAL SETUP

### A. Overview

The purpose of the experiments at the LHC is to quantify the effects of a pulsed excitation on the proton beam core. In addition, these measurements provide an experimental basis to guide the design and tolerances on the residual HEL fields at the location of the beam core, in case resonant excitation is needed for HL-LHC.

Two experiments were conducted, one in 2016 [31] and one in 2017 [32]. Beam and machine parameters are summarized in Table IV.

During the experiments, losses were measured with the fast beam current transformers (FBCTs). Transverse beam profiles and emittances were provided by the beam synchrotron radiation telescope (BSRT) [33]. All instruments were capable of delivering bunch-by-bunch data. The data analysis of the BSRT profiles is quite involved. In this paper, we focus on the direct comparison of the resulting profiles. A detailed description of the profile analysis can be found in Ref. [34], with individual experiments reported in Refs. [31, 32].

The choice of excitation patterns for the experiments was guided by losses and emittance growths calculated in numerical tracking simulations, described below. It was chosen to study experimentally the two pulsing patterns with the largest calculated effects on the beam (7th- and 10th-turn pulsing), one pattern with no effect (8th-turn pulsing), and the random excitation. In order to quantify the reproducibility of the results under different machine configurations, one pulsing pattern (7th-turn pulsing) was tried first in 2016 and then repeated

in 2017.

### B. Excitations with the transverse damper and bunch filling schemes

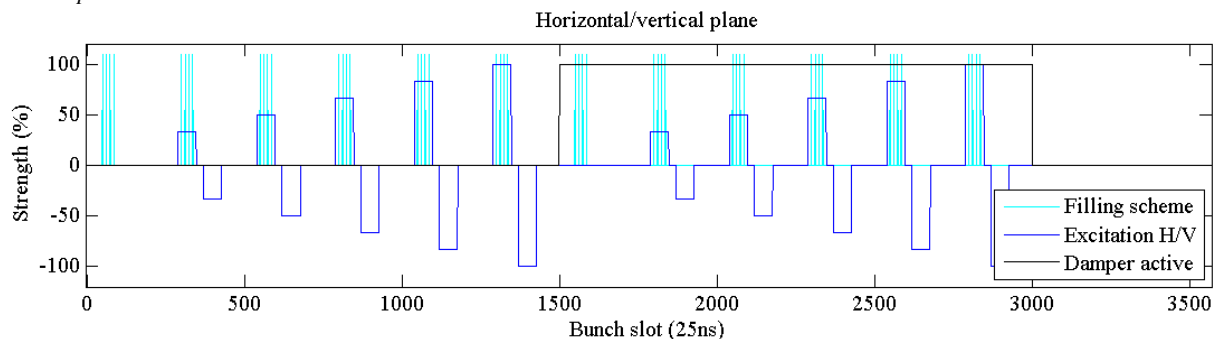
The primary function of the LHC transverse damping and feedback system, also known as ADT, is to mitigate injection oscillations and to actively damp the coupled-bunch instabilities driven by machine impedance [35, 36]. The main building blocks of the system are the following: strip-line pickups at positions Q7 and Q9 near Interaction Point 4 (IP4) of the LHC, which are connected to the beam position measurement modules at the surface; the digital signal processing modules (mDSPU); and a set of tetrode power amplifiers feeding electrostatic kickers in the same radio-frequency sector of the LHC (IP4).

Because of its flexibility and state-of-the-art hardware, the system is being routinely used for sophisticated beam excitations. These include abort- and injection-gap cleaning, excitation of individual bunches for tune and linear-coupling measurements, and other special modes of operation for dedicated experiments in the LHC.

The transverse feedback is in general active during all phases of LHC operation. The typical machine cycle requires a short damping time of 10–20 turns (high feedback gain) for injection oscillation damping. During the acceleration ramp and during collisions, the damping time is increased to 50–100 turns (lower feedback gain).

Because the damper is always active in operations, it is critical that the noise introduced by the system does not cause any measurable emittance growth, and this fact was verified

2016 experiment



2017 experiment

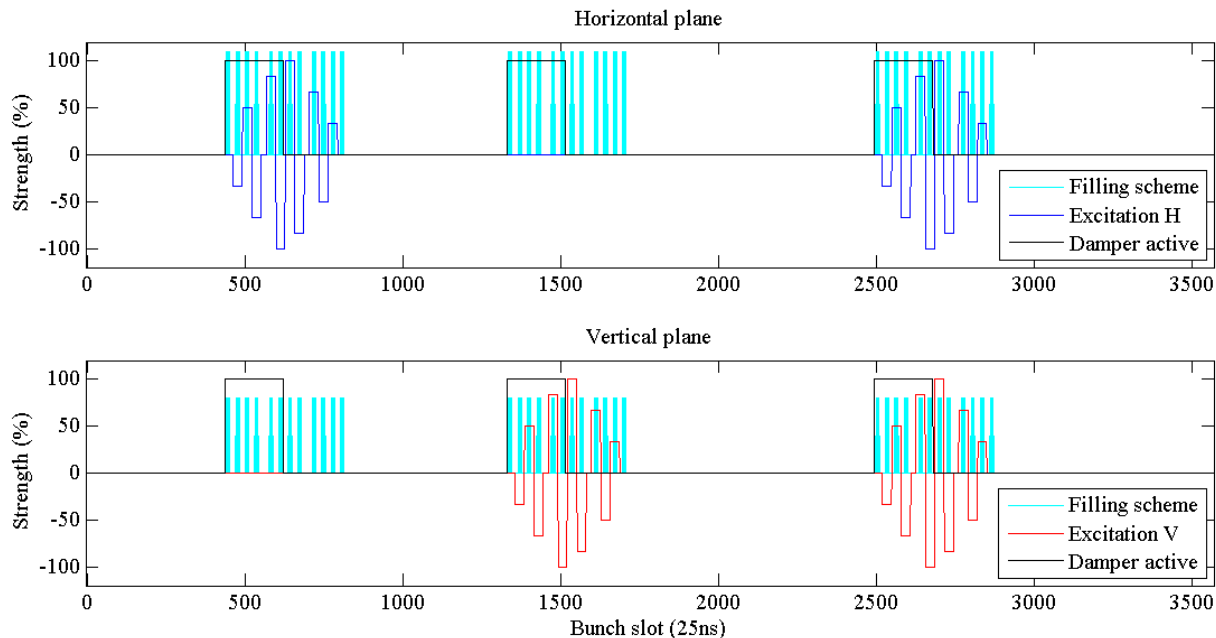


FIG. 6. Bunch filling scheme and excitation patterns for the 2016 (top) and 2017 (bottom) LHC experiments. In 2016, a total of 48 bunches was used, whereas in 2017 there were 216 bunches. Each bunch is represented by a vertical cyan bar. The bunches were grouped in subsets of 4 in 2016 and in subsets of 6 in 2017. Each subset experienced the same excitation pattern and amplitude. The excitation amplitudes and relative phases are shown in blue or red. In 2016, the excitation was only applied in one plane. In 2017, more injected bunches were allowed without compromising machine protection, so it was possible to test all 3 excitation planes in the same fill. The transverse damper was active on half of the bunches, indicated by the black lines.

experimentally [37]. All excitation signals described in this paper were digitally synthesized in the ADT's digital signal processing units and are therefore assumed to be 'noise-free.' The observed effects on the beam are attributed to the applied excitations and the effects of unwanted residual noise are assumed to be negligible.

The resonant excitation experiment in 2017 involved simultaneous measurements on 3 groups of 72 bunches, with dedicated excitation patterns and transverse feedback configurations (i.e., damper active or damper off) on each subset of 6 bunches. In 2016, a similar configuration was used, with 48 bunches in total and subsets of 4 bunches. Both schemes are illustrated in Fig. 6. A total of 5 different amplitudes could

be applied simultaneously to different subsets of bunches, denoted as  $n\Delta A$ , with  $n = 1, \dots, 5$ . In addition, there were reference bunches without excitation for each transverse feedback configuration and excitation plane. Observables (losses, emittances, etc.) were averaged over each subset of bunches experiencing the same excitation and damping conditions.

In 2017, the excitations in the horizontal and vertical planes were generated by a different set of signal-processing devices, but synchronized at a turn-by-turn level. Therefore, the bunches of the third group of 72 bunches (see Fig. 6) were affected by the kicks in both horizontal and vertical planes during the same turn.

The experiments were usually split in time into 3 different



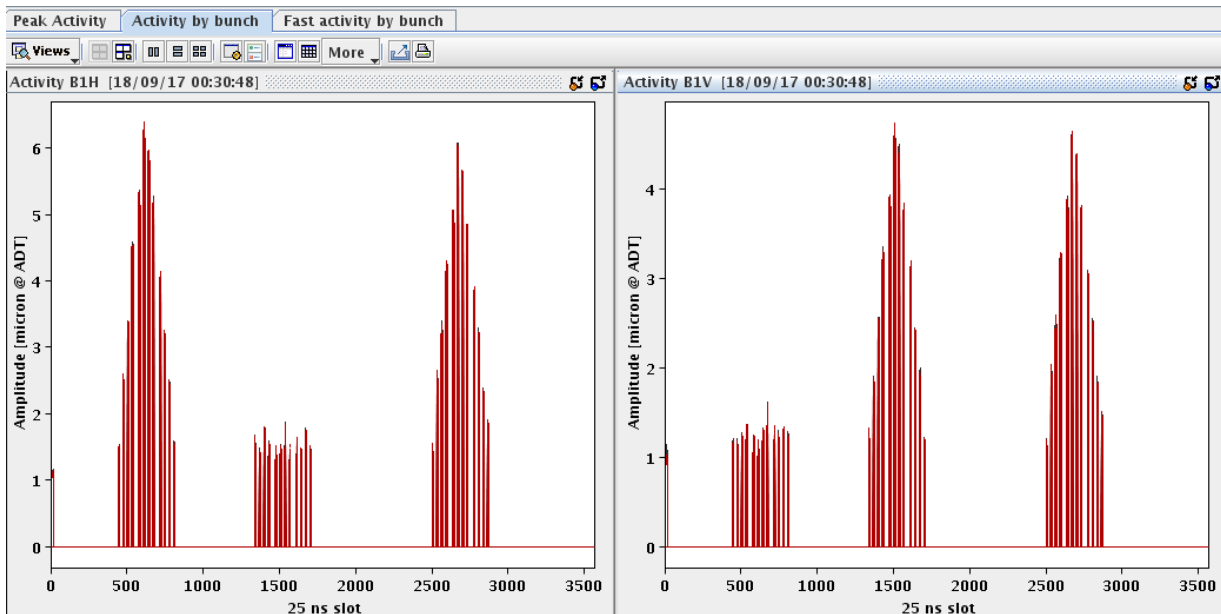


FIG. 7. Example of bunch-by-bunch beam centroid motion for Beam 1 in the horizontal (B1H, left) and vertical (B1V, right) planes, detected by the real-time transverse activity monitor during the 2017 experiment, when the beam was excited every 8th turn.

periods:

**Period 1:** No excitation was applied, to allow the beam to reach an equilibrium state after injection.

**Period 2:** The excitation was applied with a first maximum excitation amplitude of  $A_{\max,1} = 5\Delta A_1$ .

**Period 3:** The maximum excitation amplitude was further increased to  $A_{\max,2} = 5\Delta A_2 > A_{\max,1}$ .

Each period lasted approximately 10–15 minutes, which was considered long enough to allow the beam to reach its new equilibrium state. In the discussion of the experimental results (Section VI below), the 3 periods are labeled according to the maximum excitation amplitude  $A_{\max}$ , and subsets of bunches with the same excitation amplitude  $n\Delta A$  ( $n = 1, \dots, 5$ ) are grouped by color.

The proton deflection angle generated by the ADT kicker was calculated from the kicker geometry and from the excitation voltage on the deflection plates. The voltage depends on a complex chain of hardware (digital signal processor, transmission lines, low- and high-power amplifiers, etc.). In 2016, the kick was estimated from the operational system parameters and it was assigned an uncertainty of 50%. In 2017, the excitation voltage could be indirectly measured once, using the probes mounted on the kickers, with an estimated uncertainty of 10–15%. A precise in-situ calibration was not possible due to the limited machine availability for dedicated studies.

The maximum ADT kick strength that could be obtained at injection without risking saturation was approximately 100 nrad. For the experiments, a maximum nominal kick strength of 96 nrad was chosen.

Figure 7 shows an example of the oscillation amplitude of each bunch centroid in both horizontal and vertical planes, captured by the LHC real-time transverse activity monitor during the 2017 experiments, when the beam was excited every 8th turn. The measured activity shows the typical amplitude of bunch centroid excursions and reflects the expected excitation pattern.

## V. NUMERICAL TRACKING SIMULATIONS

For the preparation and interpretation of the experiments, two different types of simulations were performed:

- tracking of a Gaussian distribution, referred to as ‘distribution tracking’ in this paper, to obtain particle loss rates and emittance evolution;
- frequency-map analysis (FMA), to visualize the location and intensity of resonances [38].

For both simulation types, the tracking code LIFETRAC [39] was used. The simulation parameters are summarized in Table V. Further details are given in Refs. [21, 32].

Quantitative predictions of loss rates and emittance growth are in general challenging, as both observables are influenced by several factors. For instance, the natural noise present in the machine (originating from mechanical vibrations, current ripple in the magnet power supplies, etc.) may have complex interactions with the external excitations. In the LHC, noise sources at top energy are well characterized, whereas they are

TABLE V. Summary of parameters used in numerical simulations of distribution tracking and frequency-map analysis (FMA). Further details can be found in Refs. [21, 32].

Parameter	distribution	FMA
beam		Beam 1
beam energy		450 GeV
normalized emittance	3.5 $\mu\text{m}$	2.5 $\mu\text{m}$
4 $\sigma$ bunch length		1.3 ns
1 $\sigma$ bunch length		9.7 cm
particle distribution	6D Gaussian distribution with $10^4$ particles	equally spaced grid in $x, y$ up to $10\sigma$ , with $(\Delta p/p_0) = 0$
turns tracked	$10^6$	$10^4$
optics	2016 or 2017 injection optics, with $\beta^* = 11$ m at IP1 and IP5	
machine imperfections	standard errors, with $a_1 = b_1 = 0^a$	no errors
octupoles	$I_{\text{MOF}} = +19.6$ A, $I_{\text{MOD}} = -19.6$ A	
tunes ( $Q_x, Q_y$ )	(64.28, 59.31) for 2016, (62.27, 60.295) for 2017	
chromaticities ( $Q'_x, Q'_y$ )	(+15, +15)	
transverse aperture	5.7 $\sigma$	
longitudinal aperture	10 $\sigma$	

<sup>a</sup> Orbit errors are disabled due to different implementation of the  $a_1, b_1$  coefficients in LIFETRAC and MAD-X.  $b_2$  errors are adjusted to yield an average peak  $\beta$ -beat of 15% over 60 seeds, as observed in optics measurements in the LHC.

not well known at injection, presenting an influential but undefined input for simulations. An estimate is obtained by scaling the value at 6.5 TeV [40, 41] with proton magnetic rigidity to the injection energy of 450 GeV. This yields a maximum kick amplitude at the transverse damper of approximately

$$\theta_{\text{random,ADT,max}}(450 \text{ GeV}) = 6 \text{ nrad}. \quad (13)$$

Collective effects, such as intra-beam scattering and electron cloud, influence the time evolution of losses and emittance as well. To minimize their effects, experiments were done at low bunch intensities ( $0.7 \times 10^{11}$  protons per bunch). The presence of collective effects was neglected in these simulations.

The results of tracking simulations are discussed below in Section VI together with the experimental results, to enhance the understanding and interpretation of the models and observations.

## VI. RESULTS

In this Section, we present the experimental observations and compare them with the results of numerical simulations. In Section VIA, we show which pulsing patterns are predicted to be the most efficient in the LHC. Next, we present results for each of the specific excitation patterns that could be tested experimentally, namely pulsing every 10th turn (Section VIB), 7th turn (Section VIC), 8th turn (Section VID), and the random excitation (Section VIE). In Section VIF, we describe how the transverse damping system influenced the effects of the external excitation sources on losses, beam distributions, and emittances.

### A. Dependence on the pulsing pattern

The effect of each pulsing pattern is characterized in terms of the resulting losses and emittance growth, calculated in distribution-tracking simulations.

As an example, the simulation results for the 2016 experiment are shown in Fig. 8. A clear dependence of both losses and emittances on the pattern can be seen. The largest losses are predicted for 3rd-, 7th- and 10th-turn pulsing, and for a uniform random excitation. Because the bunch length decreases with the number of lost particles, losses are attributed to off-momentum particles hitting the transverse aperture. Significant emittance growth is visible only for 7th- and 10th-turn pulsing and for the random excitation. Compared to any resonant excitation, the random excitation shows by far the strongest effect.

The effects of 7th- and 10th-turn pulsing are also observed in the absence of machine lattice errors. In this case, the only sources of nonlinearity are sextupoles and octupoles [21], suggesting that these nonlinearities are responsible for the pronounced beam sensitivity. The driven resonances are revealed by the frequency-map analysis, shown in Fig. 9. The  $7Q_x$  resonance is excited by the 7th-turn pulsing, and the  $10Q_x$  and  $10Q_y$  resonances by the 10th-turn pulsing. As octupoles can only drive even resonances, the sources of the  $7Q_x$  resonances are the sextupoles, while the octupoles generate the tune footprint. The other pulsing patterns do not exhibit any increase in losses or emittance growth without magnetic errors. Their effect can thus be attributed to an interaction of the excitation with the machine errors, implying also a sensitivity to the chosen random seed in simulations and to the specific error distribution in experiments.

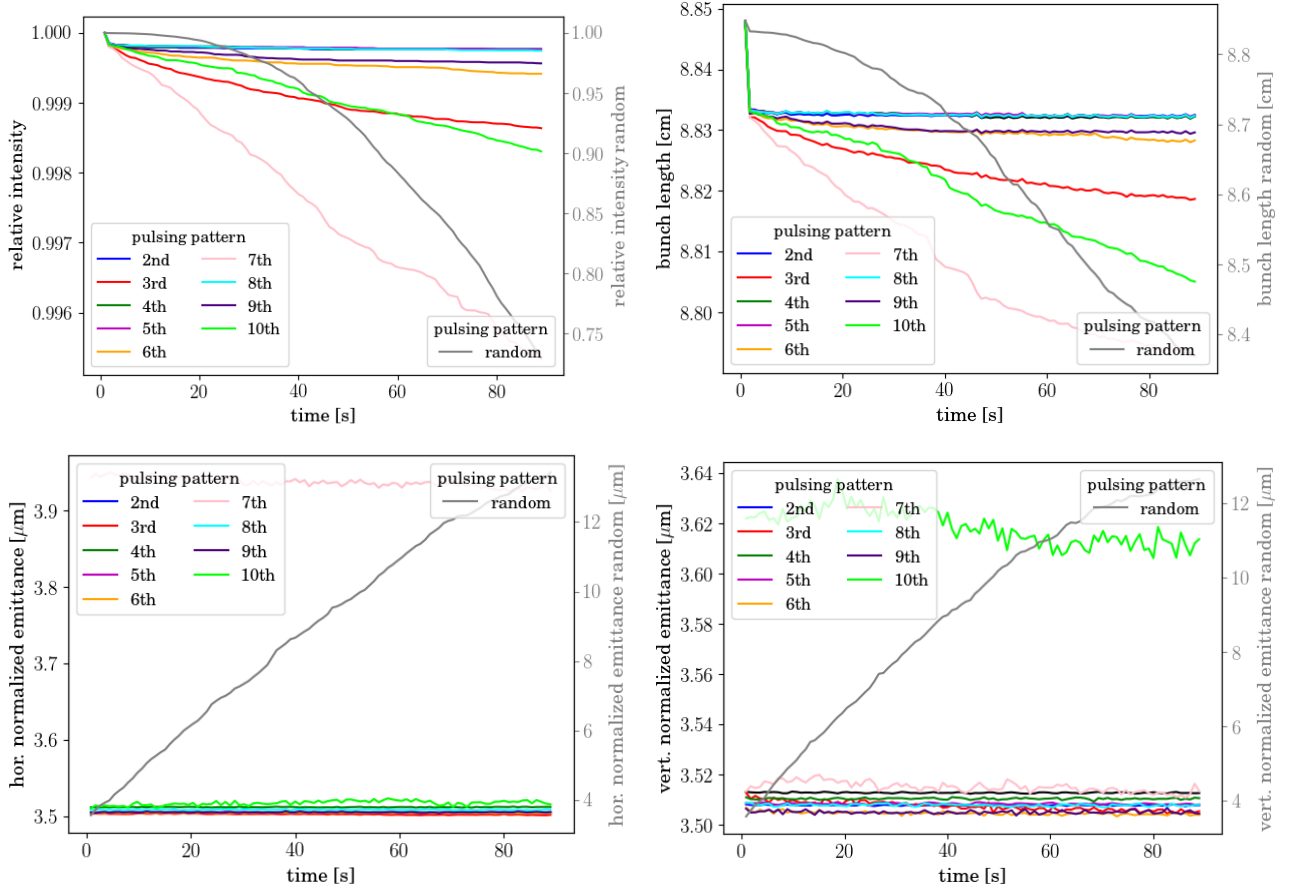


FIG. 8. Relative intensity (top left), bunch length (top right) and horizontal (bottom left) and vertical (bottom right) emittances for different pulsing patterns, calculated by distribution tracking based on the 2016 injection optics with  $(Q_x, Q_y) = (64.28, 59.31)$  and standard lattice errors. The resonant and random excitations are applied in both planes, with an amplitude of 96 nrad. No random noise component is added. Because of its much larger effects, the random excitation is shown with separate vertical axes.

In Fig. 8, one can see that, in the cases of 7th- and 10th-turn pulsing, the emittances start from an increased initial value and then stay almost constant for the duration of the simulation. This behavior is typical of the resonant excitation and it is not an artifact of the simulation. It was verified that it is due to the adjustment of the input beam distribution to a new equilibrium during the first  $10^4$  turns. In all long-term simulations ( $10^6$  turns, corresponding to 89 s) presented in this paper, the beam distribution is saved every  $10^4$  turns. Therefore, this initial fast adjustment manifests itself in an increased initial emittance value.

Besides having a larger emittance, the new distribution also differs from a Gaussian distribution. This is illustrated in Fig. 11, which shows, for different excitation patterns, two snapshots of the normalized transverse beam distributions, the ‘initial’ one at  $10^2$  turns and the ‘final’ one at  $10^4$  turns, and how they differ from each other and from a Gaussian distribution. For instance, for 7th-turn pulsing (bottom left plot in Fig. 11), simulations indicate a clear shift in beam population from the core ( $< 1\sigma$ ) towards the regions at  $\pm 1.5\sigma$  and to-

wards the tails at  $\pm 4\sigma$ .

Although on a different time scale (minutes instead of seconds), a similar re-adjustment of the beam distribution was directly observed for the first time, to our knowledge, during the 2016 and 2017 LHC experiments presented in this paper, as discussed below.

If only the resonant excitation is present, without noise, simulations show that the modified distribution is stable, with constant emittance. By adding a random noise component, representative of the natural noise present in the LHC, one calculates, after the initial adjustment phase, emittance-growth rates that increase with the amplitude of the excitation. As discussed below, an increase of the emittance-growth rates with the applied excitation amplitude was also observed experimentally.

In the case of random excitation, there is constant emittance growth, without any initial adjustment phase. The interaction with the natural noise sources in the machine results in increased losses and emittance growth, as it is basically equivalent to the application of a random excitation with an

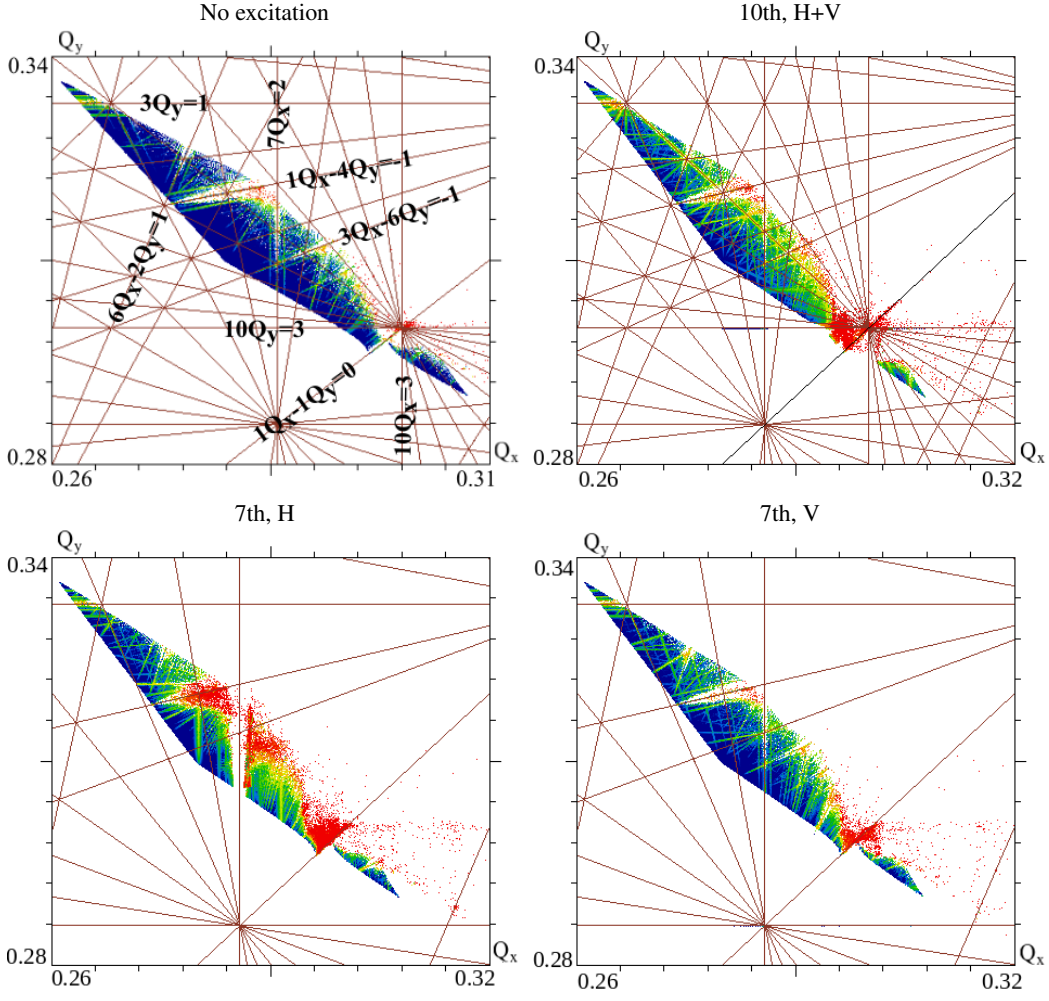


FIG. 9. Frequency-map analysis in betatron tune space based on the 2016 injection optics with no machine errors and tunes (64.28, 59.31): without excitation (top left); 10th-turn pulsing in both horizontal and vertical planes (top right); 7th-turn pulsing in the horizontal (bottom left) and vertical (bottom right) planes. The excitation amplitude is 120 nrad in the corresponding plane. The colors (blue to red) represent the tune jitter of tracked particles starting at each given location in tune space [38]. The absence of a strong excitation of any resonance in case of vertical 7th-turn pulsing and the strong excitation in case of horizontal pulsing confirms the excitation of the  $7Q_x$  resonance. For 10th-turn pulsing, there is in contrast no significant difference between H, V, or H+V (Fig. 10).

increased amplitude. In addition to the experiments presented in this paper, the effect of a random excitation was also studied in a separate experiment at the LHC for the case of colliding beams [40, 41].

### B. Pulsing every 10th turn

The 10th-turn pulsing pattern was tested in 2016 with an excitation in the vertical plane only. As this was the first time a resonant excitation was tested in the LHC, only 48 bunches were injected, in order to guarantee safe operation of the machine. To test different excitation amplitudes during one fill and have enough statistics, the excitation was only applied in one plane. The experiment started with a period of

12 minutes without excitation, to let the beam distribution fully adjust to its equilibrium state after injection. The excitation was then applied for 11 minutes, with the excitation scheme shown in Fig. 6 and a maximum excitation amplitude of  $A_{\max} = 5\Delta A = 48$  nrad. The excitation was then further increased to the maximum value of  $A_{\max} = 5\Delta A = 96$  nrad and kept for another period of 11 minutes.

The main observations are collected in Figures 12 and 13. In Fig. 12, one can see the evolution in time of losses and emittances for the control bunches and for the affected bunches, as a function of excitation amplitude. In brief, during both phases of the experiment, the excitation induced the following changes:

- loss rates increased with excitation amplitude (Fig. 12, left);

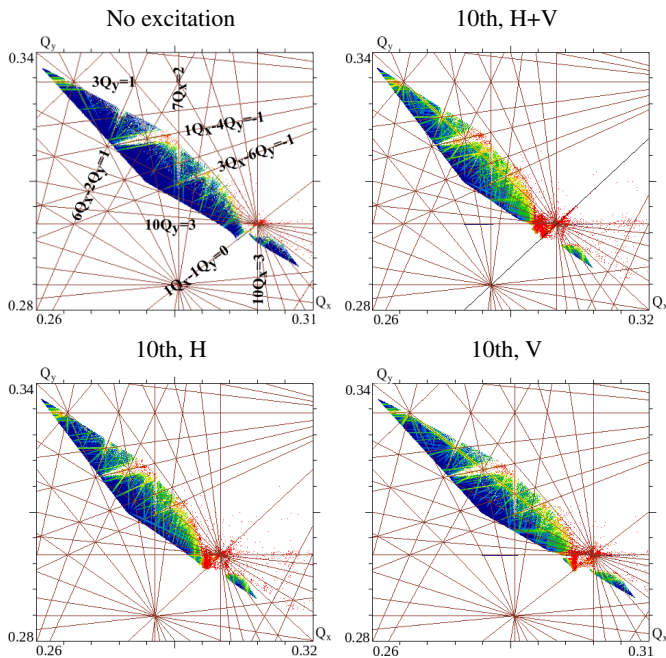


FIG. 10. FMA for 10th-turn pulsing based on the 2016 injection optics with no lattice errors and tunes (64.28, 59.31). The excitation is 120 nrad in the corresponding plane. There is no significant difference between pulsing in H only, V only, or in H+V.

- emittance growth increased with amplitude in the vertical plane, but not in the horizontal plane (Fig. 12, center and right);
- a change of the beam distribution for the excited bunches was directly observed (Fig. 13).

As loss rates, emittance-growth rates and beam distributions of the 4 reference bunches were unchanged, the above observations can be directly attributed to the pulsing pattern. The quantitative dependence of the loss rates and emittance-growth rates on excitation amplitude measured in these experiments provides an estimate of the effects of external resonant excitations, such as the residual fields of a pulsed hollow electron lens.

The vertical emittance features a behavior similar to that predicted in simulations: a fast adjustment phase of the beam distribution, which manifests itself as a rapid increase of the emittance, followed by a new equilibrium, inferred from a slower and continuous emittance growth. In Fig. 12, these two phases are indicated in blue and black.

Distribution changes could also be directly observed, thanks to the performance of the Beam Synchrotron Radiation Telescope (BSRT) [33, 34]. As an example, Fig. 13 shows the vertical profile of a reference bunch and of a bunch experiencing the maximum excitation  $A_{\max} = 5\Delta A = 48$  nrad and later 96 nrad. While the reference bunch stays unchanged, the distribution of the excited bunch clearly changes and re-adjusts

to a non-Gaussian shape, with particles shifting from the core towards the regions at approximately  $\pm 2\sigma$ . This behavior is similar to what was calculated in simulations, as discussed in Section VIA and in Fig. 11.

Numerical simulations of intensities and emittances for this experiment are shown in Fig. 14. They are the results of distribution tracking for 10th-turn pulsing without additional noise (solid lines) and with an additional noise component (dotted lines), to emulate the natural noise present in the LHC (Eq. 13). The presence of noise significantly changes the calculated effect of the resonant excitation on both losses and emittances.

A direct comparison of measured and predicted loss rates is presented in Fig. 15. As experiments and simulations were conducted on different time intervals (11 minutes vs. 90 s), we compare the relative average loss rate  $R$ :

$$R = \frac{I_{\text{start}} - I_{\text{end}}}{I_{\text{start}}} \cdot \frac{1}{\Delta t}, \quad (14)$$

where  $I$  is the beam intensity and  $\Delta t = t_{\text{end}} - t_{\text{start}}$  is the time interval during which the excitation with given amplitude is applied. Uncertainties on the excitation amplitude arise from the calibration of the transverse damping system (Section IV B). For both experiments and simulations, the error bars on the loss rate are statistical. The magnitude of the random noise component introduces a systematic uncertainty in the calculations, which was not evaluated for the scope of this paper. The systematic uncertainty on the measurements can be inferred from the difference between the 2 periods of the experiment, which should in principle be the same. Part of this systematic effect could be due to the fact that the second set of excitations with double amplitude started with a modified beam distribution. The magnitude of this effect could be verified in future experiments in which the excitations are reversed or where a new beam fill is used for each set of measurements. Overall, we conclude that the effects of this resonant excitation on loss rates could be measured in the LHC within a factor 2 and could be predicted with similar accuracy.

### C. Pulsing every 7th turn

The 7th-turn pulsing pattern was tested during both the 2016 and 2017 experiments. In 2016, the resonant excitation was employed for the first time in the LHC and the experiments were therefore still in an exploratory stage. Based on the experience gained in 2016, the experiments were then repeated more systematically, with more bunches and on both excitation planes.

The experiments were divided into different periods: the first period without excitation; the second period with a resonant excitation with a maximum amplitude of  $A_{\max} = 5\Delta A = 6$  nrad; and a third period in which the excitation amplitude

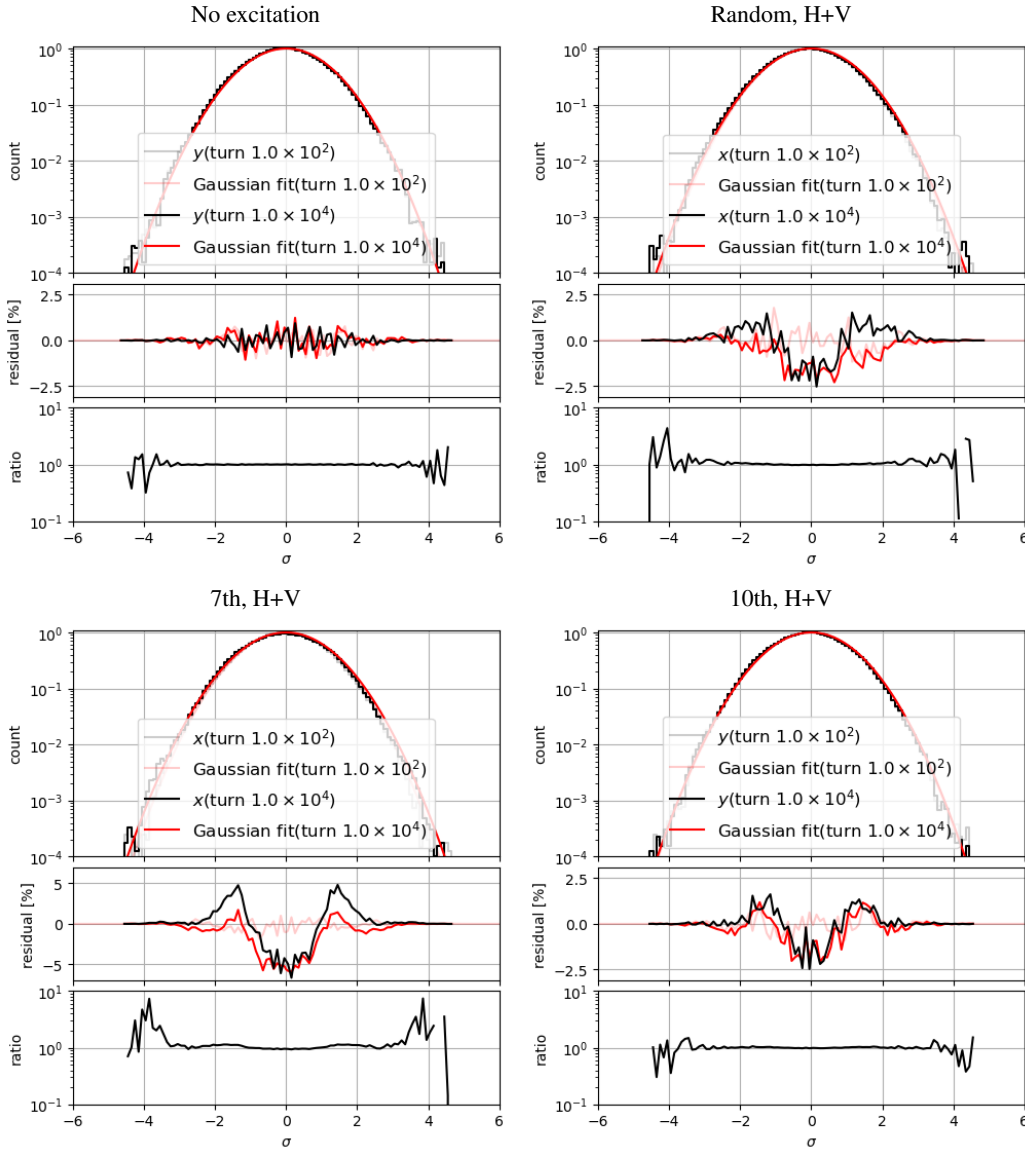


FIG. 11. Calculated beam distributions as a function of vertical position from distribution-tracking simulations based on the 2016 injection optics with  $(Q_x, Q_y) = (64.28, 59.31)$  and standard lattice errors: no excitation (top left), random excitation (top right), 7th-turn pulsing (bottom left), and 10th-turn pulsing (bottom right). The excitations are applied in both planes with an amplitude of 96 nrad. For each of the 4 cases, 3 plots are shown. The top plot shows the normalized transverse distributions: ‘initial’ (after  $10^2$  turns, in gray), ‘final’ (after  $10^4$  turns, in black), and their Gaussian fits (light and dark red, respectively). The middle plots show the relative residuals (i.e., differences, in percent of the peak value) between final and initial distributions (in black) and between each distribution and its Gaussian fit (in light and dark red). The ratios between final and initial distributions are drawn in black in the bottom plots. The residuals emphasize changes near the core of the distributions, whereas ratios (when statistically significant), reveal variations in the tails.

was further increased to  $A_{\max} = 12$  nrad. In 2016, experiments included a fourth period at  $A_{\max} = 24$  nrad.

The machine tunes were changed in standard operations from  $(64.28, 59.31)$  in 2016 to  $(62.27, 60.295)$  in 2017. This change was accompanied by a small change in optics, considered negligible for these measurements. A direct comparison of the two experiments is therefore not possible. However, these differences show how the effects of resonant excitations

are affected by small changes in fractional tune.

An insight on how the change in tune entails a change in driving resonances is provided by frequency-map analysis. Figure 9 (bottom left and bottom right plots), which was described previously, shows a strong increase in diffusion for 7th-turn pulsing in the horizontal plane around the  $7Q_x$  resonances, and only small changes for pulsing in the vertical plane. In the case of the 2017 optics and tune, both the  $7Q_x$

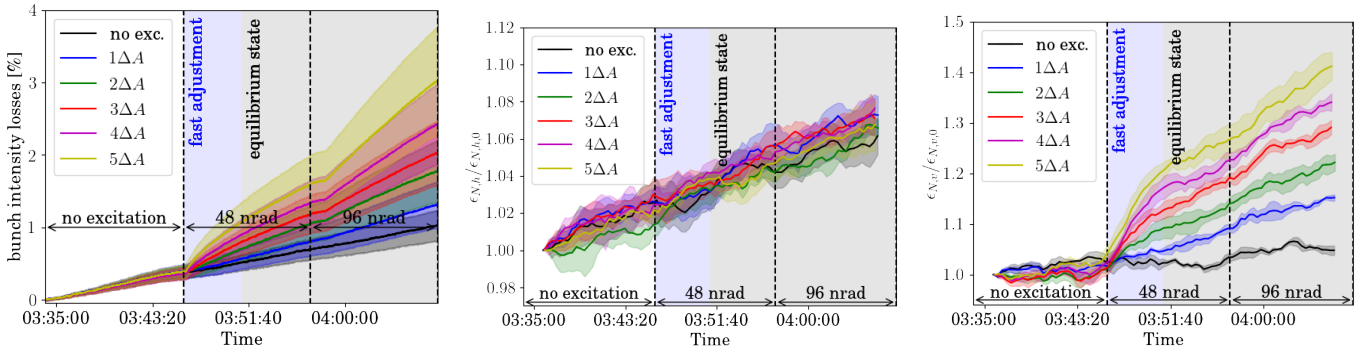


FIG. 12. Summary of the 2016 experiments on 10th-turn pulsing in the vertical plane: losses (left), horizontal emittances (middle) and vertical emittances (right), relative to their initial values. The transverse damping system was not active in this case. The 3 excitation periods are labeled in black according to the value of the maximum excitation amplitude  $A_{\max} = 5\Delta A$ : no excitation, 48 nrad or 96 nrad. The 4 bunches experiencing the same excitation amplitude  $n\Delta A$  ( $n = 0, \dots, 5$ ) are grouped by color. The data are averaged over the 4 bunches, with the envelope representing the standard deviation. The area with a blue background highlights qualitatively the fast adjustment period of the beam distribution, transitioning into a new equilibrium state (indicated by the gray background).

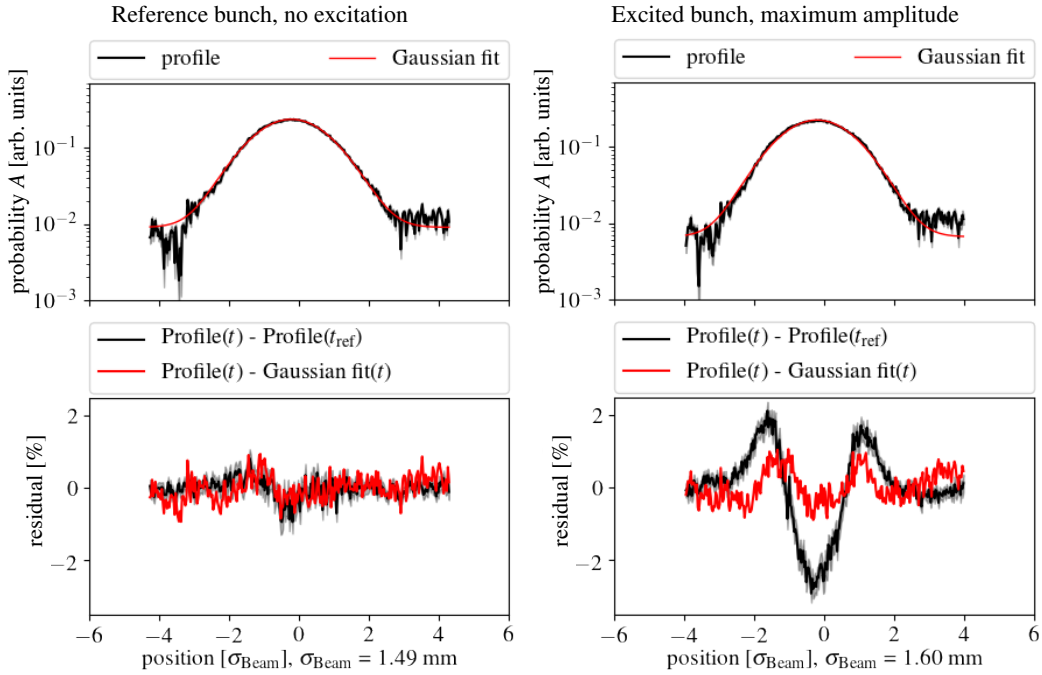


FIG. 13. Vertical beam profiles measured with the Beam Synchrotron Radiation Telescope (BSRT) during the 2016 experiments on 10th-turn pulsing in the vertical plane. The transverse damping system was not active on these bunches. The beam distributions at the end of the excitation period are shown in black in the top plots, with a Gaussian fit in red. The bottom plots show the residuals: final profile minus initial profile (black); final profile minus its Gaussian fit (red). Residuals are expressed as a fraction of the peak profile amplitude. The black lines in the plots of the residuals are a measure of the overall change of the distribution shape. The red lines indicate how different the final distributions are from a Gaussian shape. Details of the analysis are given in Ref. [34]. The distribution of the reference bunch (left) is almost unchanged, whereas the bunch experiencing the maximum excitation (right) shows a clear shift of particles from the axis towards approximately  $\pm 2\sigma$ .

and the  $7Q_y$  resonances cross the tune footprint (Fig. 16, top left). Both of these resonances are excited by 7th-turn pulsing, as one can see from the increase in tune jitter around the corresponding resonance lines for each excitation plane separately, and thus also for their combined action (Fig. 16, bottom left, bottom right, and top right plots). Although much

weaker, an increase in tune diffusion is also observed around the  $7Q_x + 7Q_y$  line when pulsing in the vertical plane or in both planes (diagonal yellow-green line in Fig. 16, top right and bottom right plots). This suggests an excitation of the 14th-order resonance. The reason why this phenomenon is much less pronounced for horizontal excitations is not under-

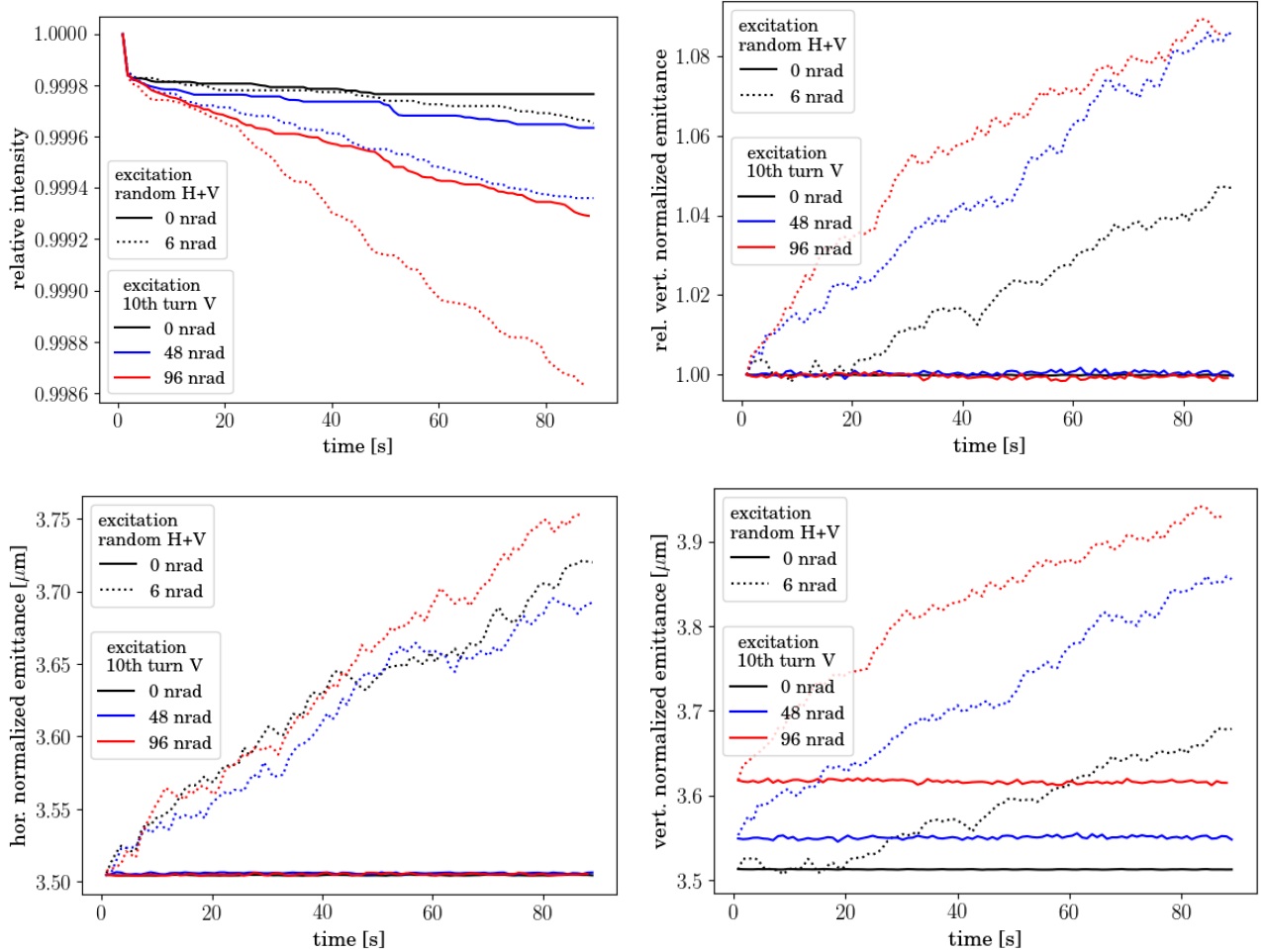


FIG. 14. Simulations (with the distribution-tracking method) based on the 2016 injection optics with standard lattice errors and tunes  $(Q_x, Q_y) = (64.28, 59.31)$ : relative beam intensity (top left); normalized horizontal (bottom left) and vertical (bottom right) emittances; vertical emittance relative to its initial value (top right). The solid lines indicate the effect of 10th-turn pulsing in the vertical plane. The dotted lines include both the resonant excitation and a random dipole noise component of 6 nrad (in both horizontal and vertical planes).

stood.

The simulated losses and emittances for both 2016 and 2017 conditions are shown in Fig. 17. The experimental results are summarized in Figures 18, 19, 20, and 21.

Calculated losses for 2016 and 2017 are similar at 24 nrad and increase more rapidly with amplitude for 2017 conditions (Fig. 17, top left). Horizontal pulsing is a few times stronger than vertical pulsing, and the combined H+V action appears slightly more effective than the sum of H and V separately.

Experimental losses are plotted as a function of time in Fig. 18 and as a function of excitation amplitude in Figs. 19 and 20. Figure 19 shows that measured losses were actually larger in 2016 than they were in 2017. They were also a few times larger than those predicted by simulations. Another discrepancy was observed in the excitation plane: horizontal, vertical, and combined pulsing had similar effects (Fig. 20). The same considerations on systematic effects discussed in

Section VI B apply in this case.

This pulsing pattern generated stronger losses than expected. In this case, we conclude that predictions are difficult, due to their sensitivity to lattice configuration, noise sources, and beam distributions.

The simulated emittances from distribution tracking are shown in Fig. 17 (bottom left and right). The main calculated results are the following, for the two experimental conditions:

**2016 conditions:** In this case, excitations were only in the horizontal plane. There is a fast increase of the horizontal emittance, dependent on the excitation amplitude, after which a constant emittance growth is observed. Vertical emittance growth is almost negligible.

**2017 conditions:** Horizontal emittances are mostly affected by the amplitude of H+V excitations and, to a much smaller extent, by H excitations; no effect is observed



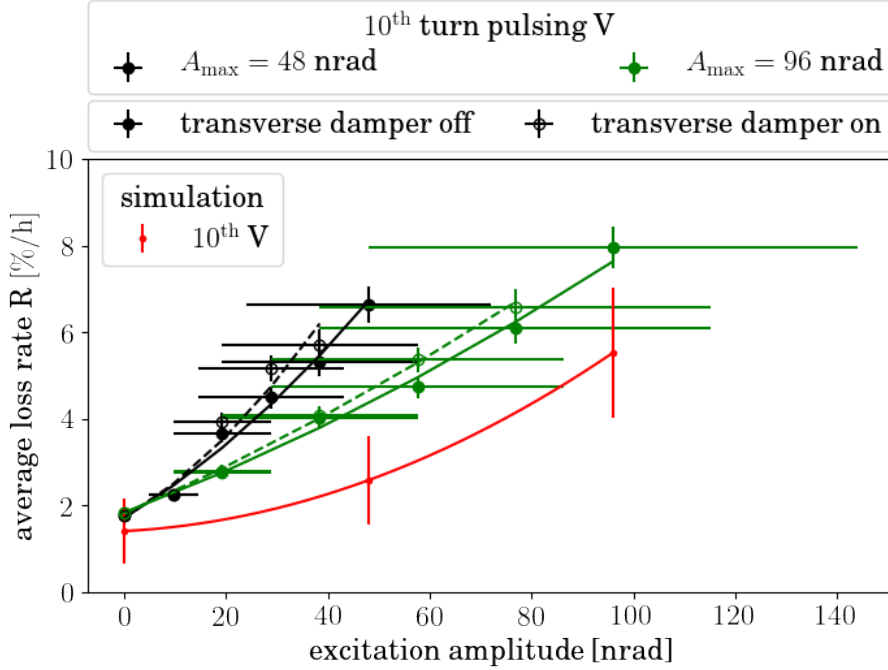


FIG. 15. Comparison between experiments and simulations of loss rates vs. resonant excitation amplitude for 10th-turn pulsing in the vertical plane. The relative average loss rate  $R$  is defined in Eq. 14. The experimental results for a maximum excitation amplitude of 48 nrad are shown in black and those for 96 nrad are plotted in green (see also Fig. 12, left, for instance). The results with damper off are represented by solid dots, those with damper on are shown with open circles. The simulation results, including random dipole noise, are shown in red (see also Fig. 14). Statistical and systematic uncertainties are discussed in the text. The curves represent empirical quadratic fits to the data with damper off (solid) and with damper on (dashed).

from V excitations. Vertical emittances are mostly affected by the amplitude of H+V and V excitations; the effect of H excitations is much smaller, if any, with no clear dependence on amplitude.

A set of measured emittances is plotted in Fig. 18 (middle and right plots). In 2016, with only horizontal excitations, amplitude-dependent horizontal emittance growth was observed, with no effect on the vertical emittance. In 2017, V and H+V excitations generated vertical emittance growth, while horizontal excitations had no effect. These observations are consistent with the predicted behavior.

During these experiments, emittances changed in two phases, as they did during the 10th-turn pulsing studies (Section VI B) and in simulations: a fast adjustment phase (shaded in blue in Fig. 18) followed by a new equilibrium (in gray). Changes in the transverse beam distribution could be observed directly through changes in the synchrotron-light (BSRT) profiles (Fig. 21).

#### D. Pulsing every 8th turn

Excitation patterns that have little effect on the beam core and a large effect on the halo are good candidates for extend-

ing the range of hollow electron lens operation. In principle, this is possible because of the highly nonlinear fields generated by the HEL at the transverse locations of the beam halo and the small fields at the beam core. For this reason, the 8th-turn pulsing pattern was chosen for the experimental studies, as simulations indicated much smaller core effects compared to 7th- and 10th-turn pulsing, as discussed in Section VI A.

Simulations of intensities, emittances, and bunch lengths for different amplitudes of the 8th-turn excitation are shown in Fig. 22. No significant effects are predicted for excitation amplitudes up to 192 nrad. Horizontal and vertical emittances show small changes in growth rate, but without a clear dependence on the amplitude or plane of the excitation.

The frequency-map analysis in amplitude space is shown in Fig. 23. It reveals that the driven resonances are of high order, mainly  $16Q_y$  and  $8Q_x - 4Q_y$ , and their effect is therefore expected to be small.

The effects on the beam were tested during the 2017 experiment. The excitation amplitude was increased to a maximum of 96 nrad. The loss rates as a function of excitation amplitude are presented in Fig. 24. For H and V excitations, no significant increase of the loss rate was observed. A weak increase with amplitude was seen in the case of H+V excitation. Observed and predicted loss rates were roughly of the same magnitude (about 0.1–0.4%/h).

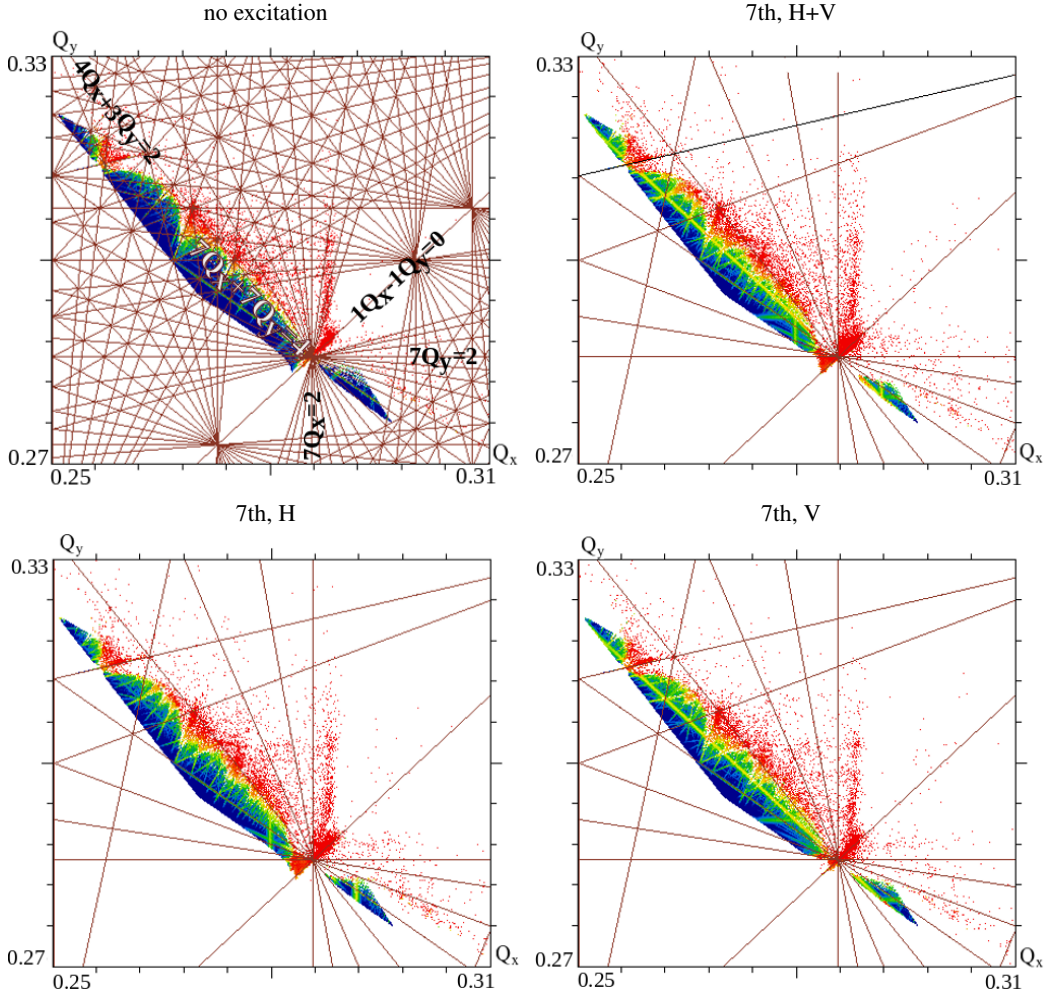


FIG. 16. FMA in betatron tune space based on the 2017 injection optics with no machine errors and tunes (62.27, 60.295): without excitation (top left) and for 7th-turn pulsing in H+V (top right), H only (bottom left) and V only (bottom right). The excitation amplitude is 96 nrad. The  $7Q_x$ ,  $7Q_y$ , and 14th-order  $7Q_x + 7Q_y$  resonances are excited.

Changes in beam distributions were also detected (Fig. 25). The horizontal distribution responded to the H excitation with a slight depletion of the core and a corresponding increase around  $2\sigma$ . For an H+V excitation, one would expect a similar distribution change. However, this change could not be detected directly, because, in this case, the emittance of the control bunches was much smaller ( $1.8 \mu\text{m}$ ) than the emittance of the excited bunches ( $2.6 \mu\text{m}$ ), and intra-beam scattering masked the effects of the excitation [32]. In the vertical plane, beam distributions and emittances were not affected by the resonant excitation.

### E. Random excitation

The random excitation is a powerful and flexible halo-cleaning pattern, but it is also potentially harmful for the proton beam core. The effects of random noise in various ma-

chines have been studied extensively in the past (see, for instance, Refs. [41–45]).

A random pattern can be employed at full strength or added as a modulation to a continuous mode of operation (depending on the parameter  $a$  in Eq. 5). During the 2017 experiment, we tested the effects of the random excitation at full strength ( $a = 1$ ) and compared it with the resonant excitations.

The random excitation excites practically all resonant frequencies in the beam. This can be clearly seen in the FMA example in amplitude space illustrated in Fig. 26. Tune diffusion is increased rather uniformly at all particle amplitudes, and not on specific resonant lines, as it happens for  $k$ th-turn pulsing.

The calculated results of distribution tracking, with excitation amplitudes up to 24 nrad, are shown in Fig. 27. They show the following features:

- negligible losses are observed, independent of the plane of excitation;

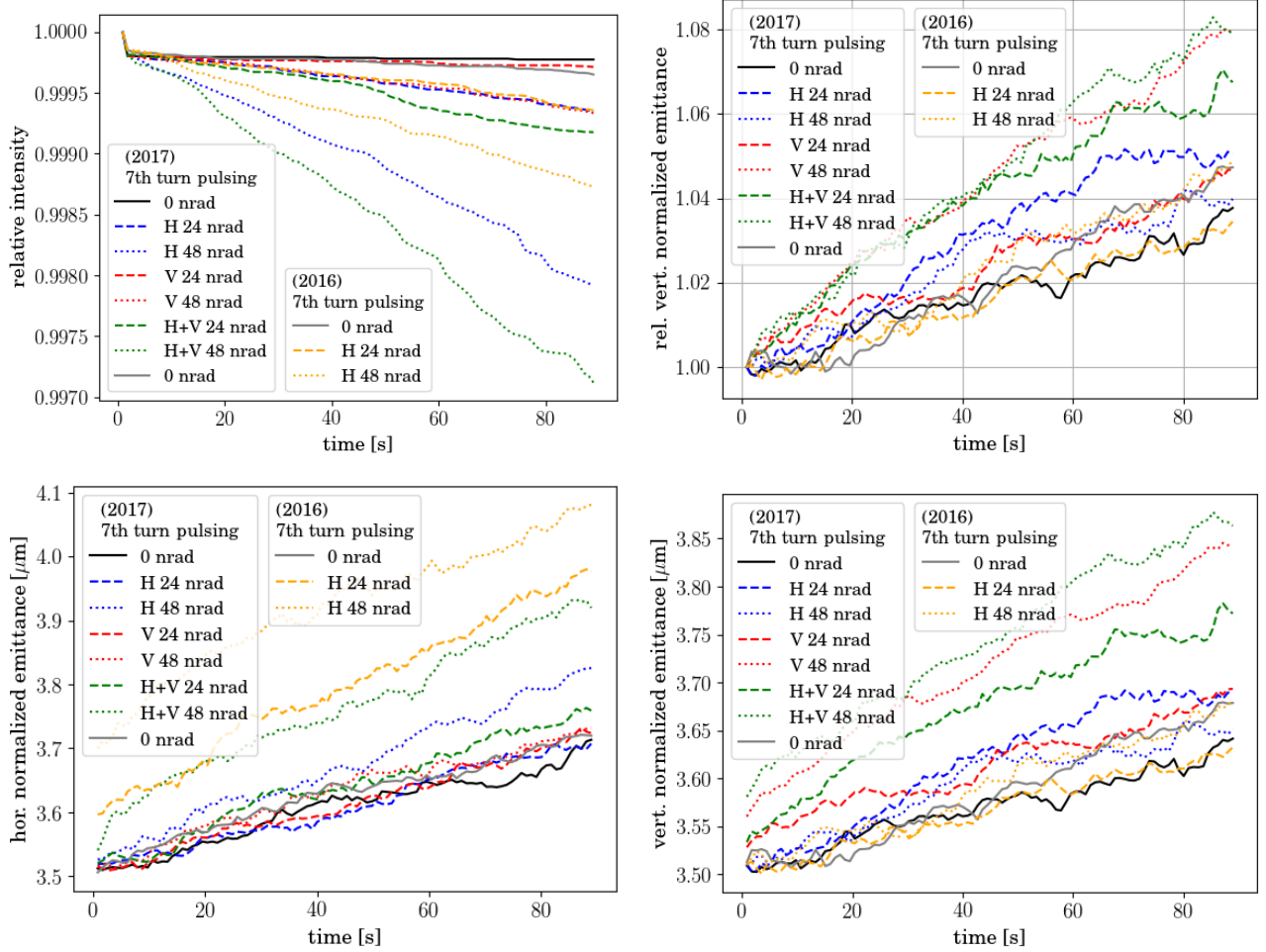


FIG. 17. Calculated bunch intensities and emittances from distribution tracking based on the 2016 injection optics with standard lattice errors and  $(Q_x, Q_y) = (64.28, 59.31)$  and 2017 injection optics with standard lattice errors and  $(Q_x, Q_y) = (62.27, 60.295)$ : relative intensity (top left); horizontal emittance (bottom left); vertical emittance (bottom right); the relative vertical emittance is also shown (top right). The solid black line includes only a random dipole noise component in H+V of 6 nrad. The dotted and dashed lines correspond to 7th-turn pulsing with two different excitation amplitudes (24 nrad and 48 nrad), plus a random dipole noise component in H+V of 6 nrad.

- there is no significant change in bunch length;
- emittance growth is only generated by excitations in the same plane (or in both planes);
- horizontal and vertical emittance growth rates are large and comparable in magnitude;
- when the excitation is applied in both planes, a small increase or decrease in the emittance growth rate is observed with respect to the cases of separate excitations, an effect likely due to lattice coupling;
- emittance growth takes place at a constant rate, without the initial adjustment phase characteristic of  $k$ th-turn pulsing.

The effects of random excitation were measured during the 2017 experiments. Increasing emittance growth with exci-

tation amplitude was recorded only in the plane of excitation. Horizontal and vertical emittance growth rates for a given amplitude were comparable. As an example, the relative horizontal and vertical emittances during V and H+V pulsing are illustrated in Fig. 28. In addition, the excitations translated into constant growth rates. In particular, there was no adjustment phase followed by an equilibrium state, as observed during 7th- and 10th-turn pulsing. The qualitative behavior of emittances predicted in simulations was therefore confirmed. Calculations could also reproduce the magnitude of the measured effects. For instance, at 6 nrad, the calculated emittance growth rates were 3.6%/min in the horizontal plane and 2.7%/min vertically, whereas in experiments we measured 5.0%/min.

The changes in beam distributions were also directly detected in the BSRT profiles. As an example, Fig. 29 shows the

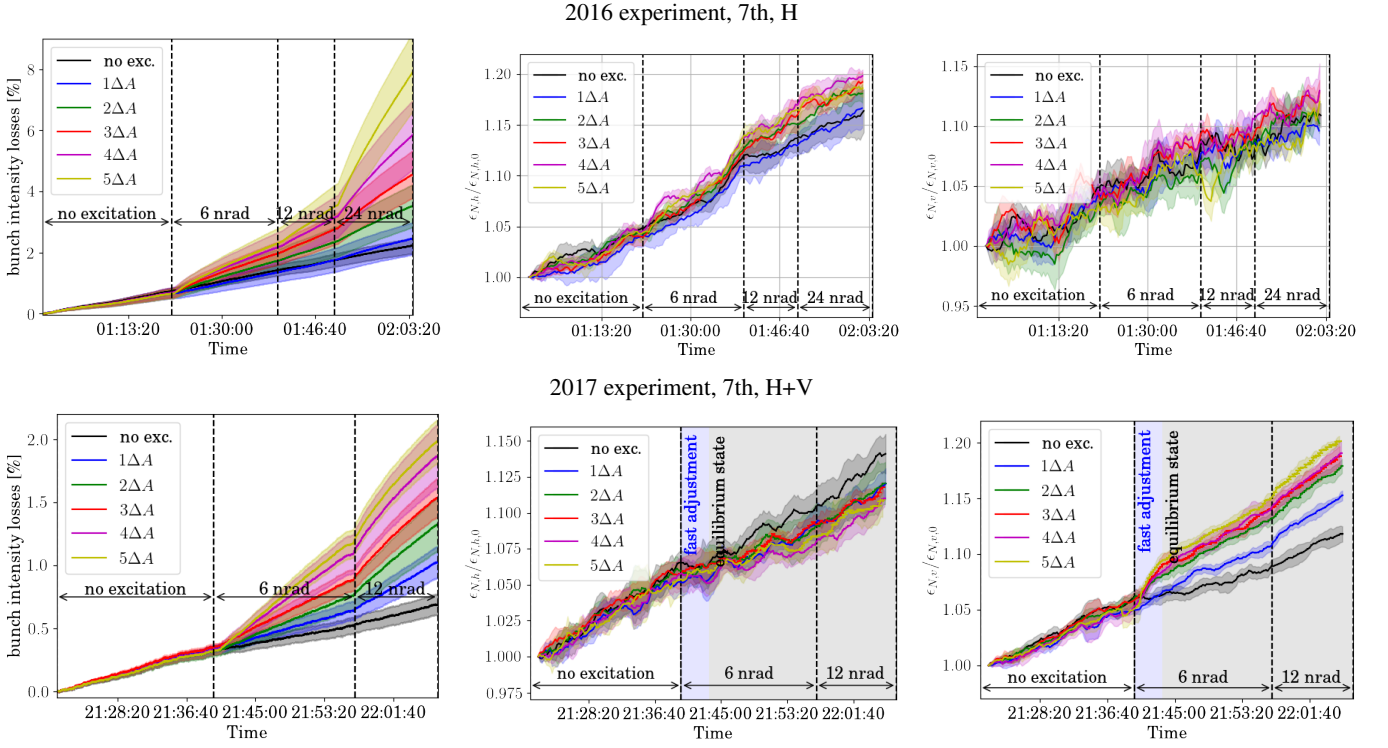


FIG. 18. Measured losses and emittances during the 2016 and 2017 experiments: relative losses (left), relative horizontal emittances (middle), and relative vertical emittances (right). Measurements are averaged over the bunches experiencing the same excitation amplitude. The transverse damping system was not active in this set of measurements.

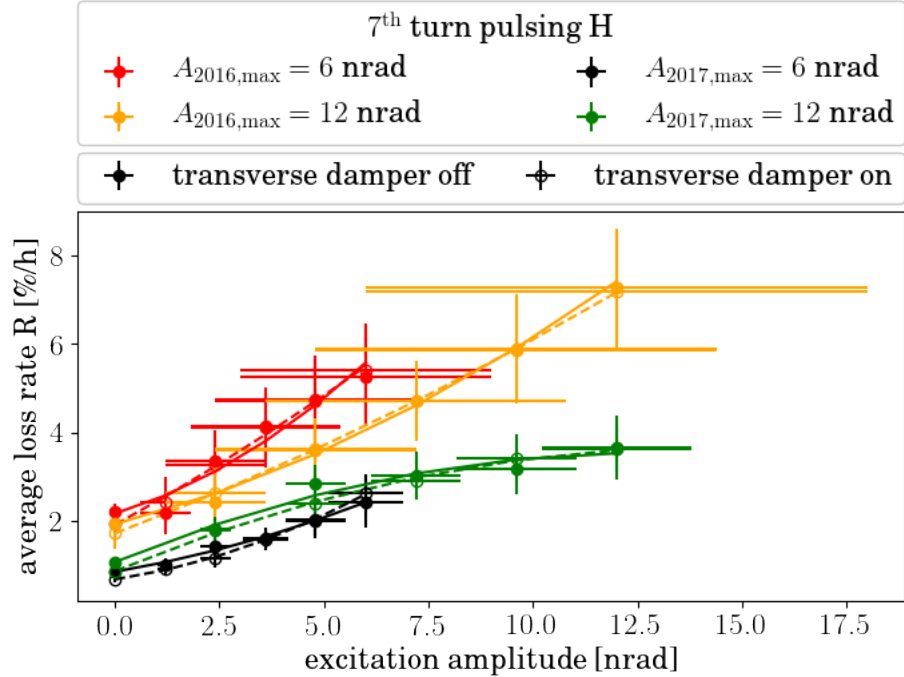


FIG. 19. Measured loss rates vs. excitation amplitude for 7th-turn pulsing in the horizontal plane during the 2016 experiment (red and yellow) and the 2017 experiment (black and green). The uncertainties on the excitation amplitude are dominated by the calibration of the transverse feedback and damping system. The uncertainties on the loss rates are statistical. An estimate of the systematic uncertainties (due to changes in beam distribution, for instance) is given by the difference between the two data sets within each experiment. The lines indicate empirical second-order polynomial fits, with damper off (solid) and with damper on (dashed).

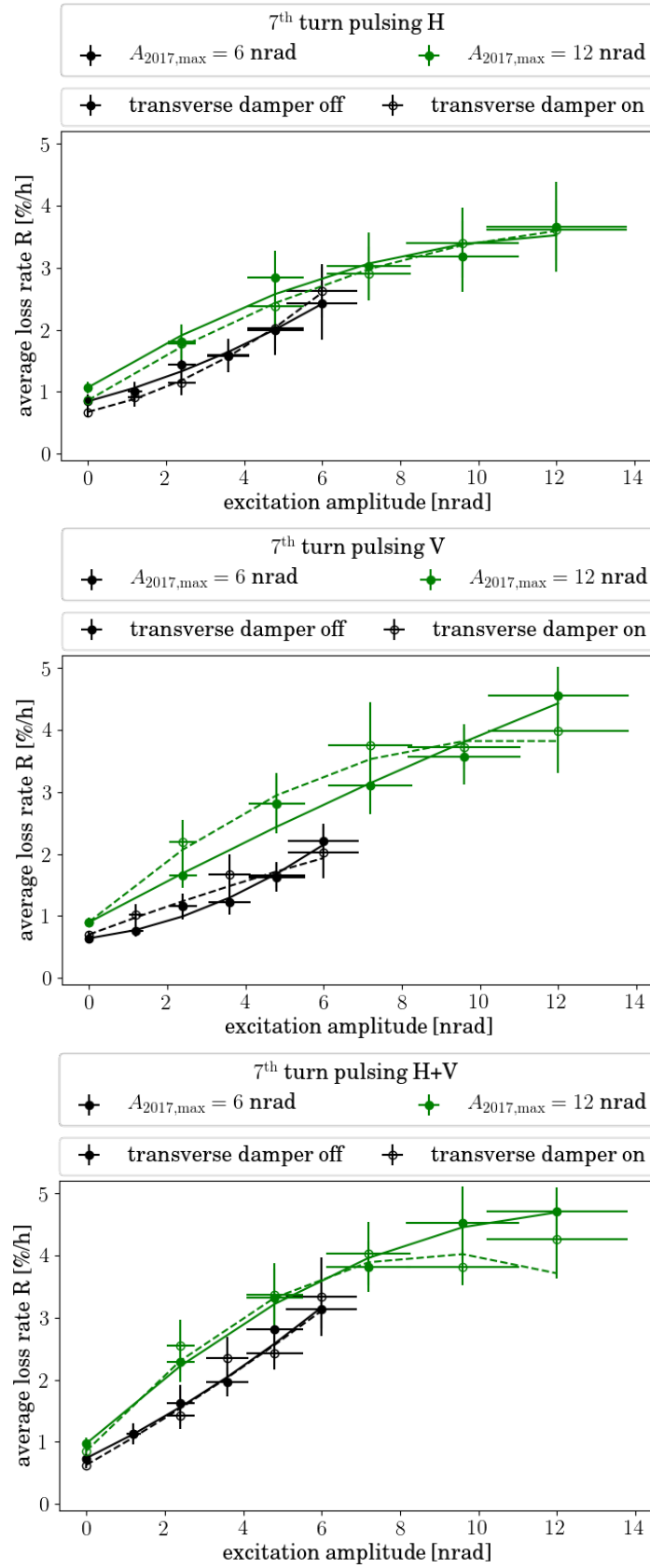


FIG. 20. Comparison of the measured loss rates as a function of excitation amplitude during the 2017 experiment for 7th-turn pulsing in H only (left), V only (center), and in H+V (right). The three excitations generate similar loss rates.

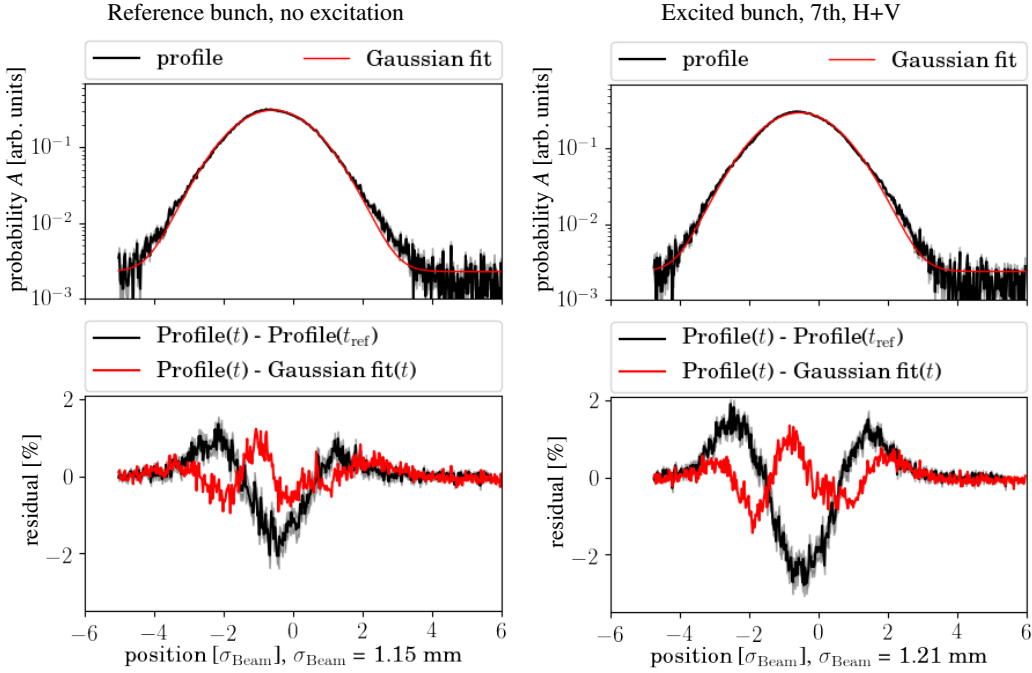


FIG. 21. Vertical beam profiles measured with the Beam Synchrotron Radiation Telescope (BSRT) during the 2017 experiments. The profiles are taken at the end of 7th-turn pulsing in H+V. For these bunches, the transverse damper was not active. The data are presented in the same way as in Fig. 13. The profile changes in the bunch affected by the maximum excitation (right) are larger than those displayed by the reference bunch (left).

profiles induced by a vertical random excitation, compared to those of a reference bunch. In this case, the distribution widens, but it retains a Gaussian form, in contrast to the case of 10th-turn pulsing, when it assumed a non-Gaussian shape (see Fig. 13, for instance).

The measured loss rates are presented in Fig. 30 as a function of random excitation amplitude in H, V, and H+V planes. Losses increased quadratically with excitation amplitude, contributing approximately 3%/h at 12 nrad. In simulations, the qualitative behavior was the same; however, the predicted magnitude was much lower (0.1%/h at 12 nrad). Moreover, the measured effect of the combined H+V excitation was approximately the sum of H and V separately.

The systematic effects on losses during random excitations were smaller than during resonant pulsing, as shown by the agreement between the 3 data sets (black, red, yellow) within each of the excitation modes in Fig. 30. This fact may be an indication of the random excitation affecting the whole beam, whereas, in the cases under study, resonant pulsing patterns excited specific amplitude regions and were therefore more susceptible to their population and to the order in which experiments were performed. Another indication comes from the direct comparison of loss rates vs. excitation amplitude for random and 7th-turn pulsing (Fig. 31). The first time it is applied (red points), the 7th-turn excitation grows quadratically with amplitude, whereas the second time it shows signs of saturation (yellow). In any case, although the dynamics of

their action may be different, these two pulsing patterns were the most powerful, generating losses at the level of several percent per hour at an amplitude of 12 nrad.

Another feature of random excitation was that the loss rates were reduced by about a factor 2 when the transverse damping system was active (dashed vs. solid lines in Fig. 30). This was true for all three modes of excitation (H, V, and H+V). On the other hand, for the resonant pulsing modes, the transverse damper seemed to have a negligible effect. This observation is discussed in more detail in Section VIF.

## F. Effect of the transverse damper

During  $k$ th-turn pulsing experiments, the action of the transverse feedback and damping system (ADT) did not significantly change any of the observables, namely losses, emittances, and beam distributions. On the other hand, the ADT considerably reduced any changes of the above parameters in case of random excitations.

An example is shown in Fig. 31, where losses from 7th-turn pulsing in H+V are compared with those measured during random excitations in H+V. For 7th-turn pulsing, the results with and without damper almost coincide, whereas a significant reduction was observed for random excitations. As another example, vertical emittances for 7th- and 10th-turn pulsing in V are compared to those obtained during vertical random exci-

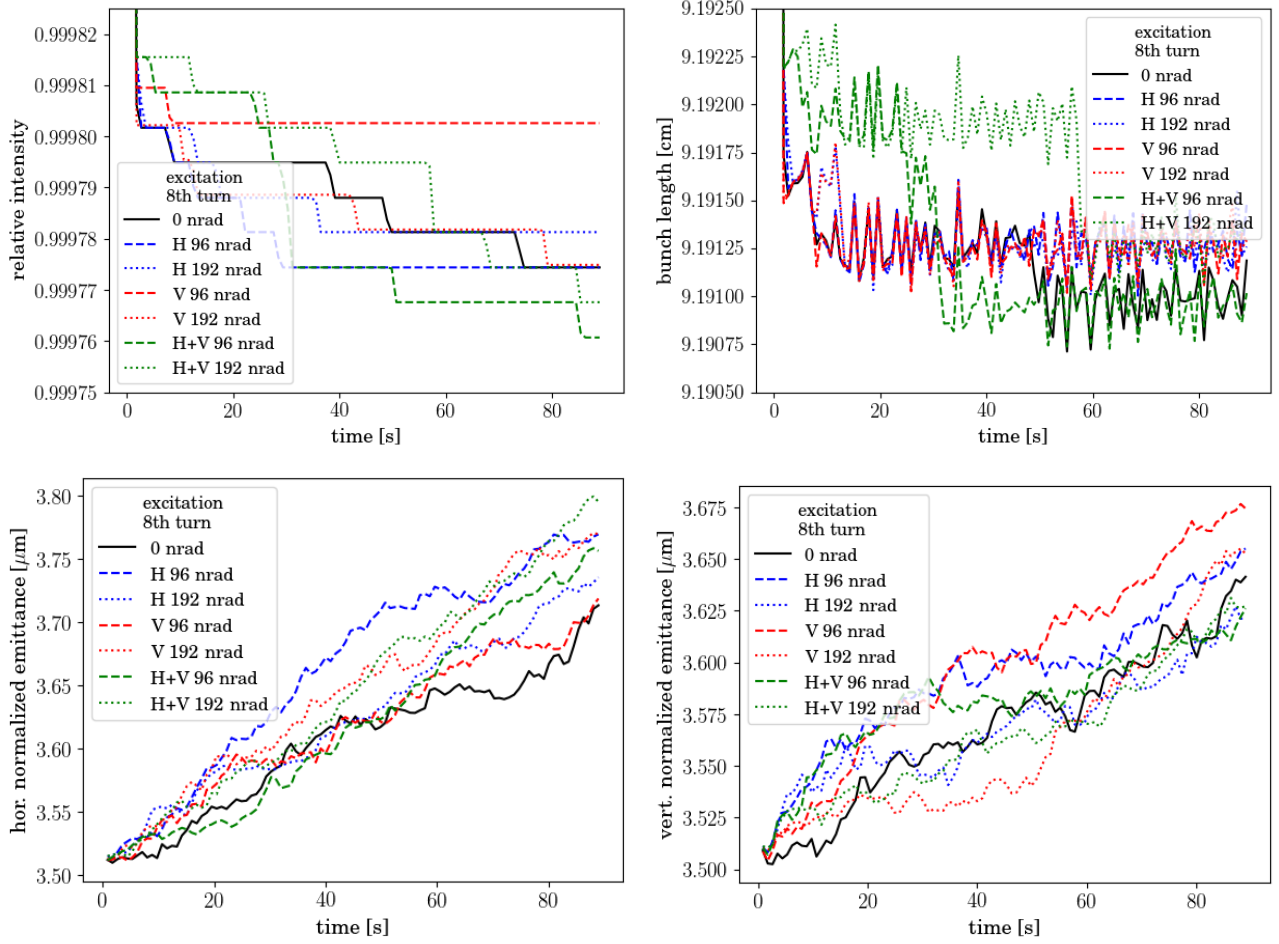


FIG. 22. Calculated relative intensities (top left), bunch lengths (top right), horizontal emittances (bottom left), and vertical emittances (bottom right) from distribution-tracking simulations based on the 2017 injection optics with standard lattice errors and tunes  $(Q_x, Q_y) = (62.27, 60.295)$ . The solid black line is the reference case, including only a random dipole noise component in H+V of 6 nrad. The dotted and dashed lines are the results for 8th-turn pulsing, including the same random dipole noise component.

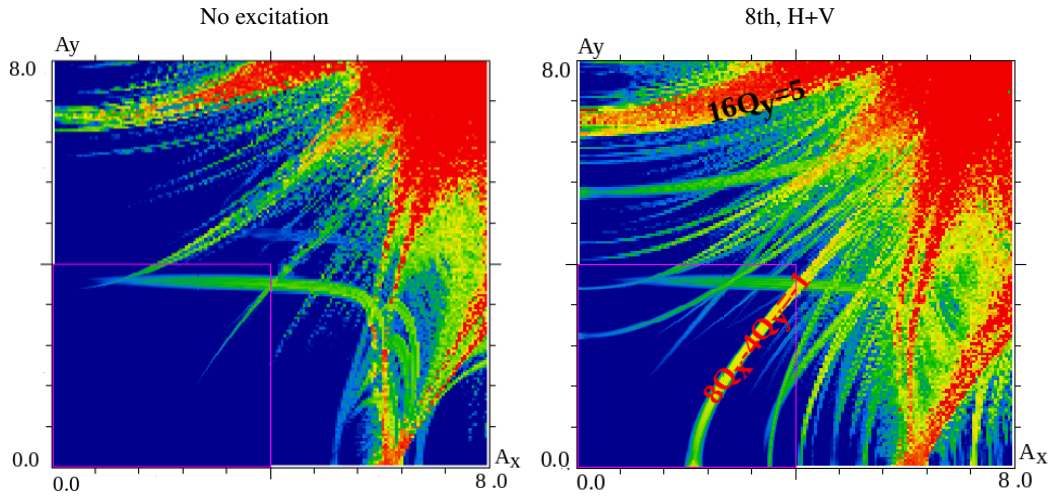


FIG. 23. FMA in transverse amplitude space without excitation (left) and for 8th-turn pulsing (right) based on the 2017 injection optics with no lattice errors and tunes  $(62.27, 60.295)$ . The excitation amplitude is 96 nrad in both planes. The  $16Q_y$  and  $8Q_x - 4Q_y$  resonances are excited.

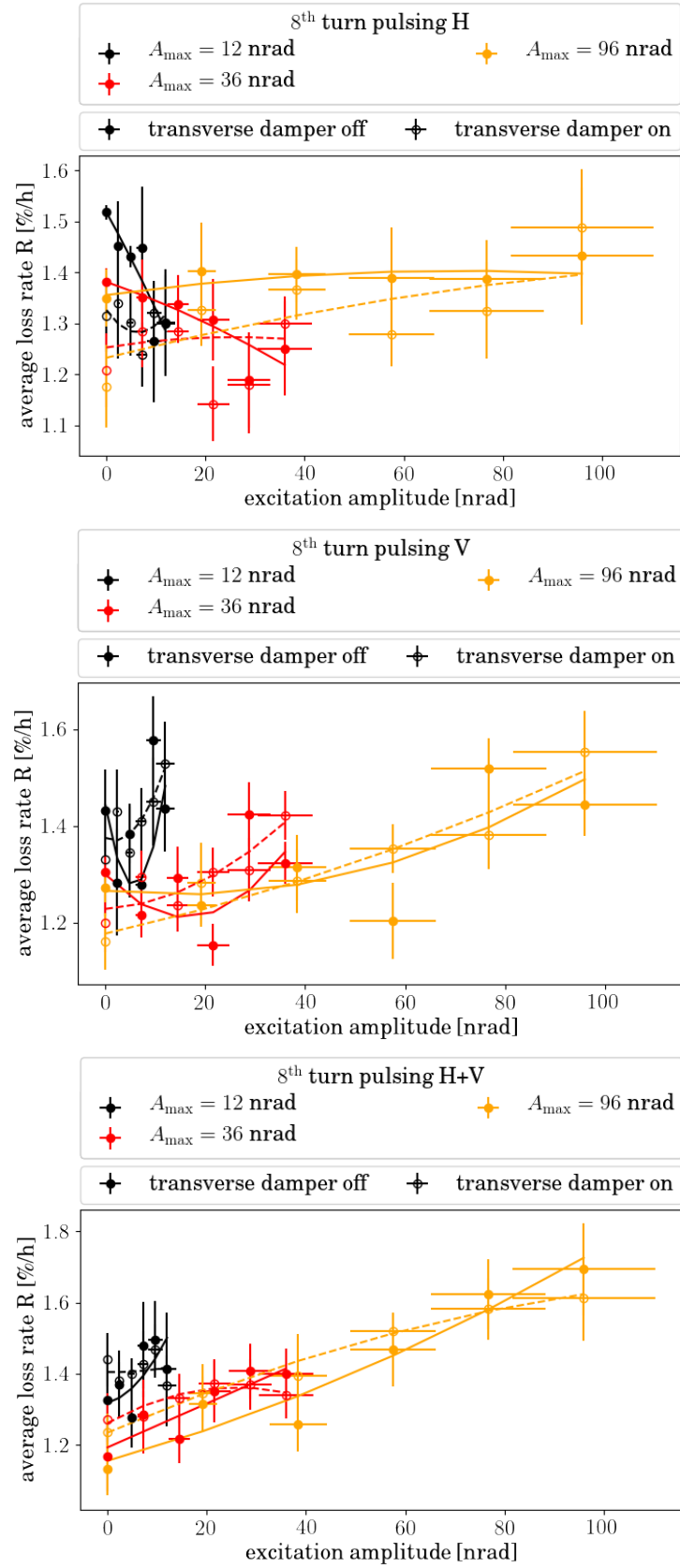


FIG. 24. Measured loss rates vs. excitation amplitude for 8th-turn pulsing in H only (left), in V only (center) and in H+V (right) during the 2017 experiment. Uncertainties are statistical. The differences between the three data sets within each excitation mode (black, red, and yellow curves) provide an estimate of the systematic errors.



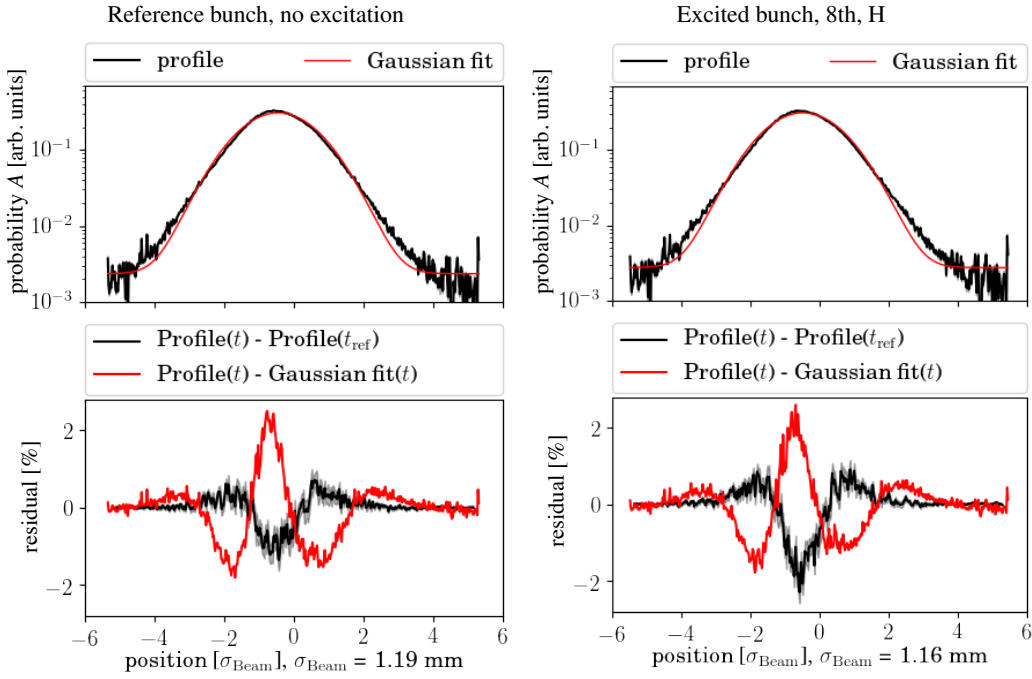


FIG. 25. Horizontal beam profiles measured with the Beam Synchrotron Radiation Telescope (BSRT) during the 2017 experiments. The profiles are taken at the end of the 8th-turn pulsing in H. For these bunches, the transverse damper was not active. The data are presented in the same way as in Fig. 13. The profile changes in the bunch affected by the maximum excitation (right) are larger than those displayed by the control bunch (left).

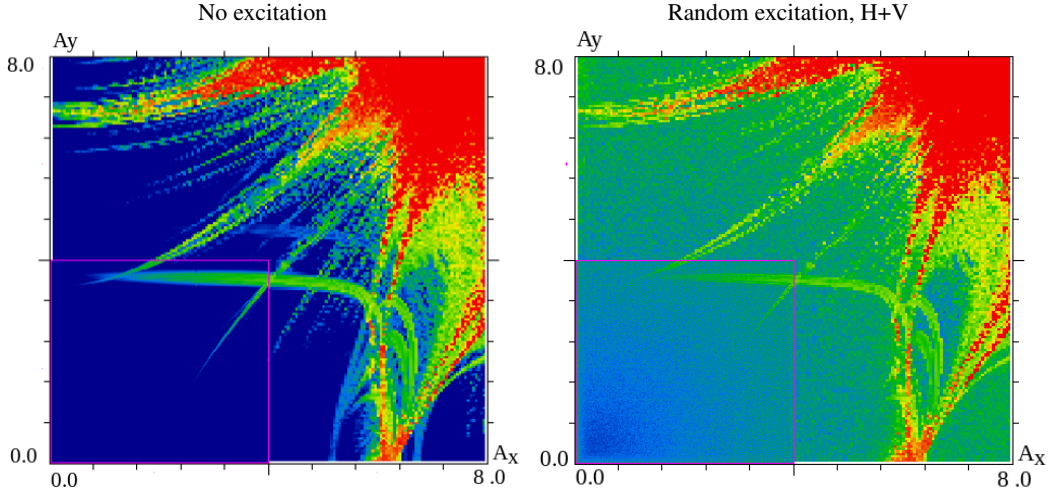


FIG. 26. FMA in transverse amplitude space without excitation (left) and with a random 1-nrad H+V excitation (right), based on the 2017 injection optics with no lattice errors and tunes (62.27, 60.295).

tations in Fig. 32.

The reason why the transverse damper appeared to be capable of damping random but not resonant excitations is unknown. In principle, it fulfills the requirements needed to detect and damp the resulting oscillations:

- the closed-orbit distortion caused by the resonant excitations was large enough to be detectable by the ADT pickups;
- in order to detect the orbit distortion, the system compares the position of each bunch with its position in the previous turn; therefore, an oscillation due to  $k$ th-turn pulsing, with  $k > 1$ , should be detected and damped;
- the transverse damper acts on each bunch individually, so it should be capable of applying the appropriate corrective kick to each group of bunches subject to the same excitation amplitude.

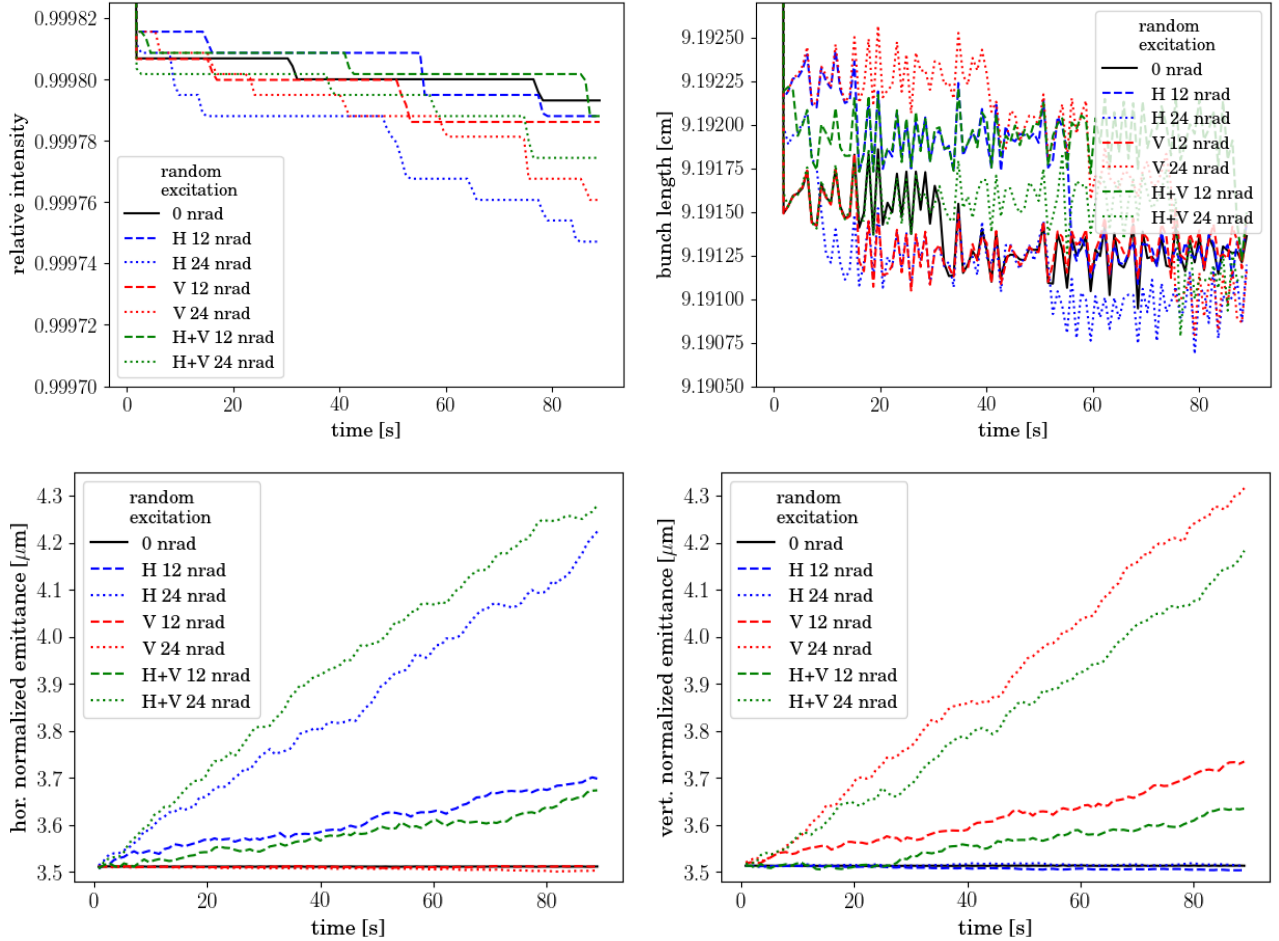


FIG. 27. Simulations (distribution tracking) based on the 2017 injection optics with standard lattice errors and  $(Q_x, Q_y) = (62.27, 60.295)$ : relative bunch intensity (top left), bunch length (top right), horizontal emittance (bottom left), and vertical emittance (bottom right). The solid black line indicates the reference case with no excitation. The dashed and dotted lines are the results of random excitations (H, V, or H+V) with amplitudes 12 nrad and 24 nrad.

We report these observations in an attempt to advance the understanding of the interaction between resonant excitations and damping systems. Further studies are obviously needed.

## VII. DISCUSSION AND CONCLUSIONS

We described the results of numerical simulations and experimental studies conducted in 2016 and in 2017 on the effects of random and resonant excitations on proton losses, emittances, and beam distributions in the Large Hadron Collider.

These studies were motivated in part by the need to assess the effects of a hollow electron lens (HEL), which is being proposed for active halo control in HL-LHC. Hollow electron beam collimation was demonstrated in the Tevatron in continuous mode [12], i.e., with the same electron beam current acting on a given bunch every turn. In this case, the unwanted

residual kicks, which arise from profile asymmetries, injection and extraction bends, solenoid field misalignments, etc. have a negligible effect on the circulating beam. An electron lens that is pulsed resonantly can have much stronger effects, and this fact was used in the Tevatron for abort-gap cleaning [22]. The resonant-pulsing capability (having different currents every turn for a given set of bunches) will be incorporated in the HL-LHC hollow electron lens to enhance its range of achievable removal rates. However, due to time constraints, only a very limited set of experimental tests with resonant kicks could be done in the Tevatron. More studies are currently being planned using the electron lenses in the Relativistic Heavy Ion Collider (RHIC) at Brookhaven National Laboratory [16, 17].

The effects of resonant excitations depend on several factors, including machine optics and the distribution of the beam in phase space and in betatron tunes. For this reason, we decided to study resonant transverse kicks on proton beams di-

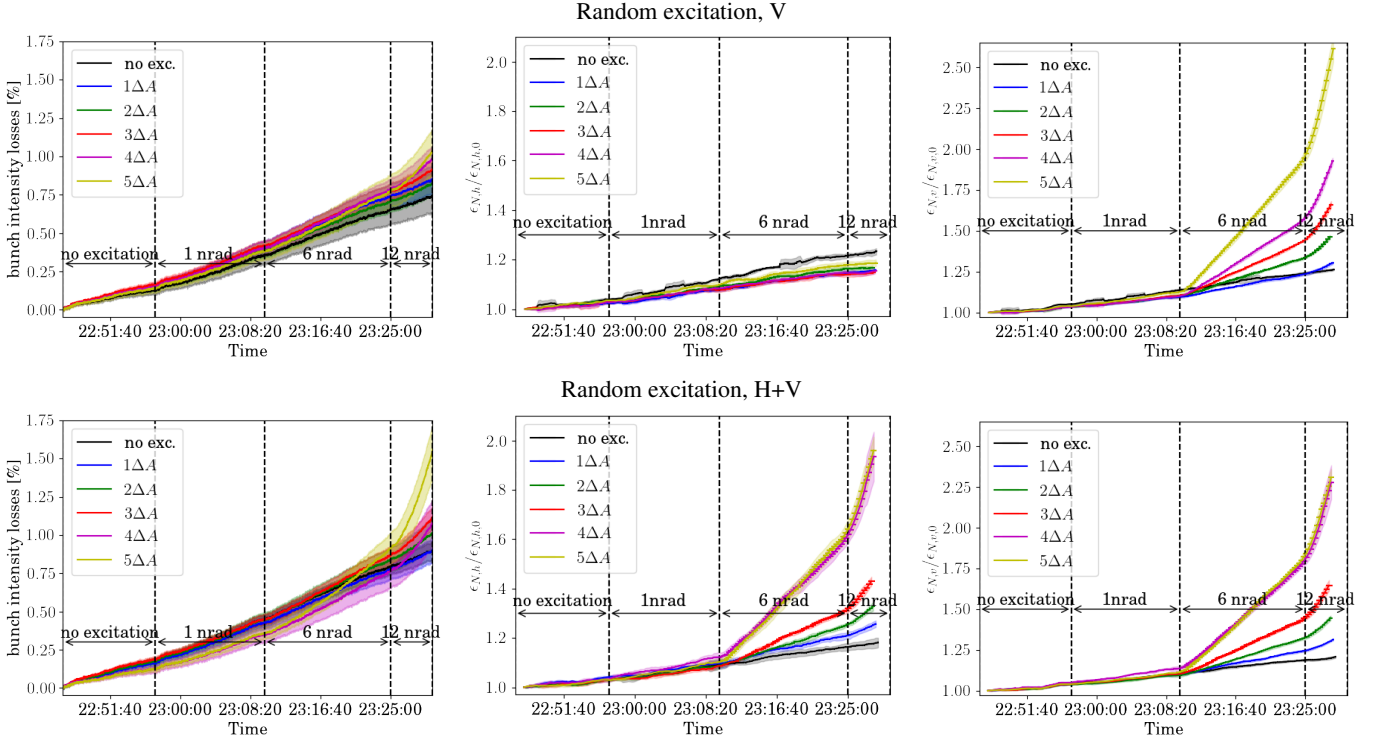


FIG. 28. Measured effects of the random excitation (in V, top row; and H+V, bottom row) during the 2017 experiment: relative intensity losses (left), relative horizontal emittance (center), and relative vertical emittance (right).

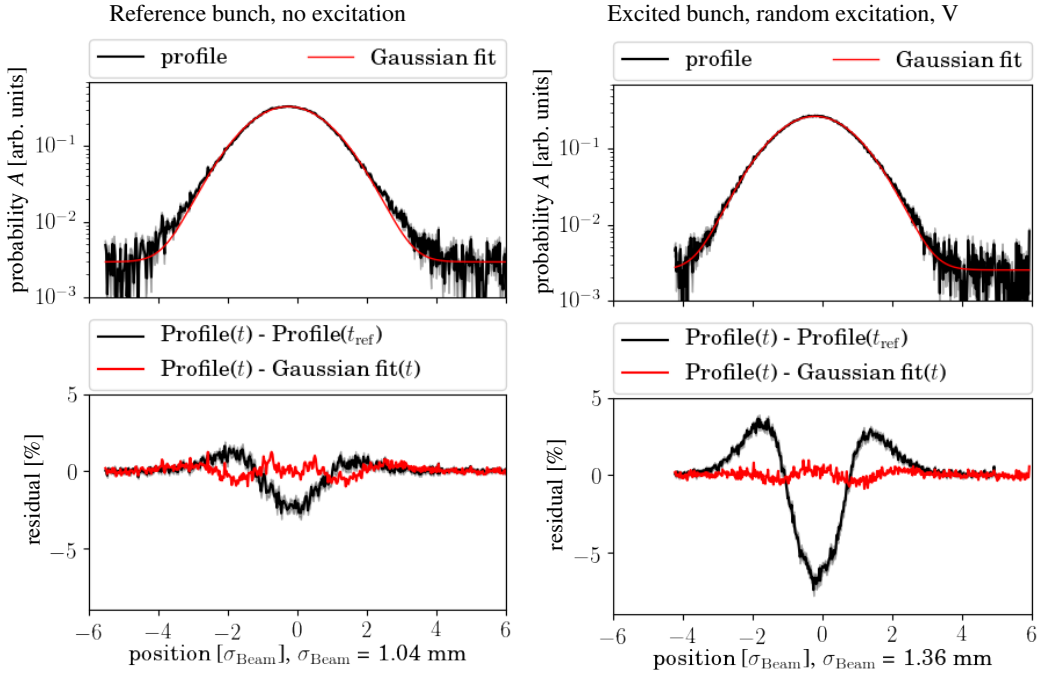


FIG. 29. Vertical beam profiles measured with the Beam Synchrotron Radiation Telescope (BSRT) during the 2017 experiments. The profiles are taken at the end of the random excitation in V. For these bunches, the transverse damper was not active. The data are presented in the same way as in Fig. 13. The distribution changes in the bunch experiencing the maximum excitation (right) were larger than those in the reference bunch (left). In both cases, distributions retained a Gaussian shape.

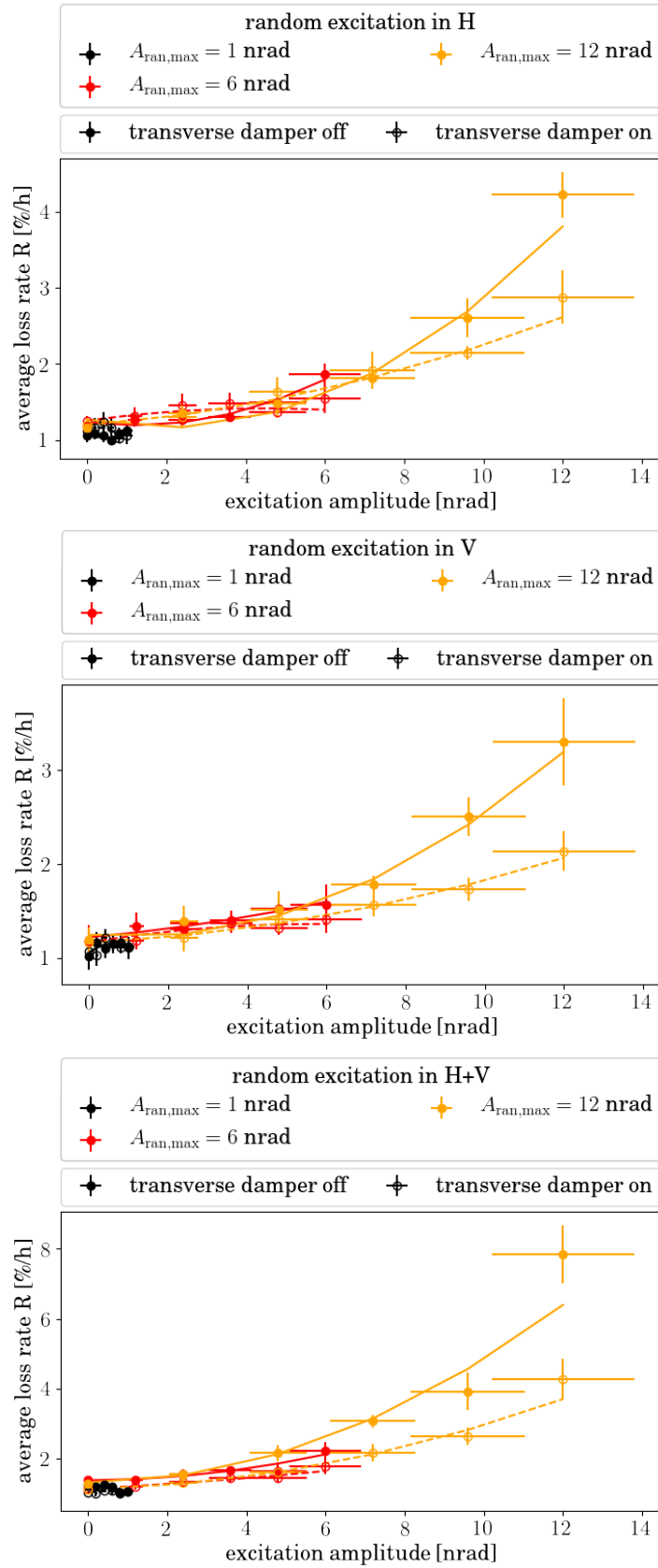


FIG. 30. Measured loss rates as a function of amplitude for random excitations in H only (left), V only (center), and H+V (right). For each of the three excitation modes, three consecutive data sets were taken (black, red, and yellow), with increasing maximum amplitude. Data were taken simultaneously with no transverse damper on some bunches (filled circles and solid lines) and with the damper active on other bunches (empty circles and dashed lines). The lines represent empirical second-order polynomial fits.

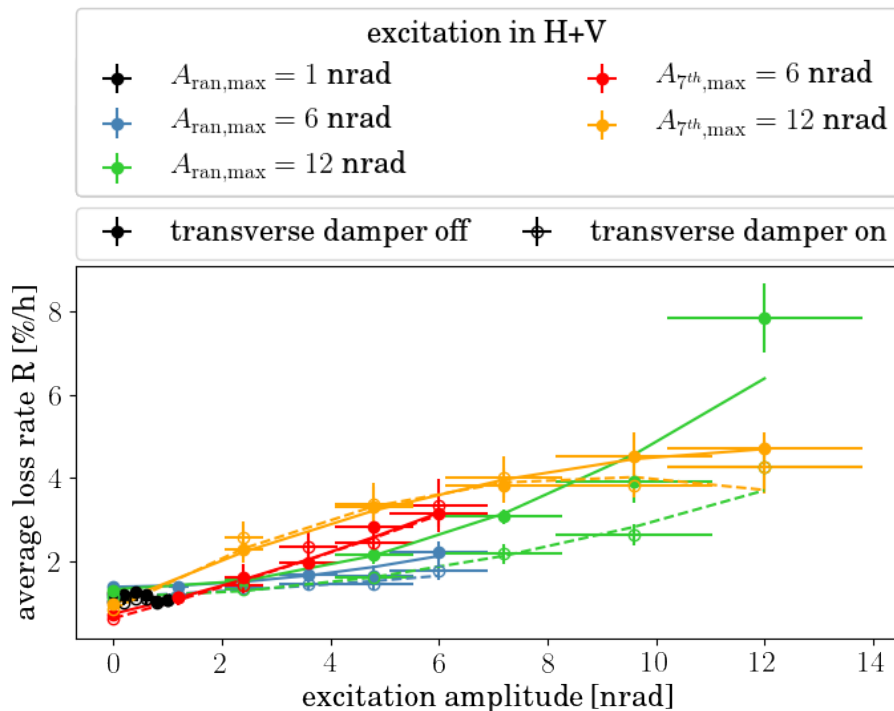


FIG. 31. Comparison of measured loss rates vs. excitation amplitude between random and 7th-turn pulsing in H+V, obtained during the 2017 experiment.

rectly in the LHC. We relied on the flexibility of the LHC transverse feedback and damping system (ADT) to emulate the nonlinear residual kicks of a hollow electron lens with transverse dipole kicks, using various excitation patterns. We focused on the effects on the beam core, namely losses, emittances and beam distributions, as these determine the magnitude of the residual fields that can be tolerated. Obviously, the choice of pulsing patterns to be used in operations depends also on their effects on the beam halo. These effects are outside the scope of the present work (and they are challenging to measure directly).

The dipolar component of the residual kick from the electron lens is approximately 0.5 nrad from the injection/extraction bends and about 20 nrad from profile imperfections in the main overlap region. These estimates are based on current HL-LHC parameters and on electron-beam measurements on a test stand. These values can be reduced by improving cathode emission, solenoid-field uniformity, and transport of the intense magnetized electron beams.

The effects of the pulsing patterns were evaluated by numerical tracking simulations and by frequency-map analysis. These calculations provided insights on the rich nonlinear dynamics of resonant excitations. Kicking the beam every 7th turn and every 10th turn were chosen as examples of strong excitations, whereas 8th-turn pulsing had very weak consequences.

These patterns were tested in experiments and compared

with random excitations. Bunch filling schemes were devised so that reference bunches and different excitation amplitudes could be measured at the same time, including the presence or absence of transverse feedback. The influence of collective effects was minimized by reducing the bunch charge. Because these were the first LHC experiments on resonant excitations, and to reduce turn-around time, all studies were conducted at injection energy.

The experiments confirmed the relative strength of the pulsing modes. For instance, random and 7th-turn pulsing generated losses at the level of a few percent per hour at 12 nrad, whereas the same level of losses was obtained at 96 nrad for 10th-turn pulsing; even at 96 nrad, losses from 8th-turn pulsing did not exceed 0.6%/h. A similar hierarchy was observed with respect to emittance growth; in this case, 10th-turn pulsing was stronger than 7th-turn pulsing. In many cases, simulations underestimated losses and emittance growth. One important unknown factor was the magnitude of machine noise and its sources, which had to be extrapolated from collision to injection energy. Other factors were collective effects such as intra-beam scattering and electron cloud, which were minimized in experiments but could not be entirely avoided. The comparison between 7th-turn pulsing in 2016 and 2017 emphasized the sensitivity of horizontal and vertical excitations to working point and tune footprint.

A clear distinction between resonant and random excitations was their effect on beam distributions. Random noise

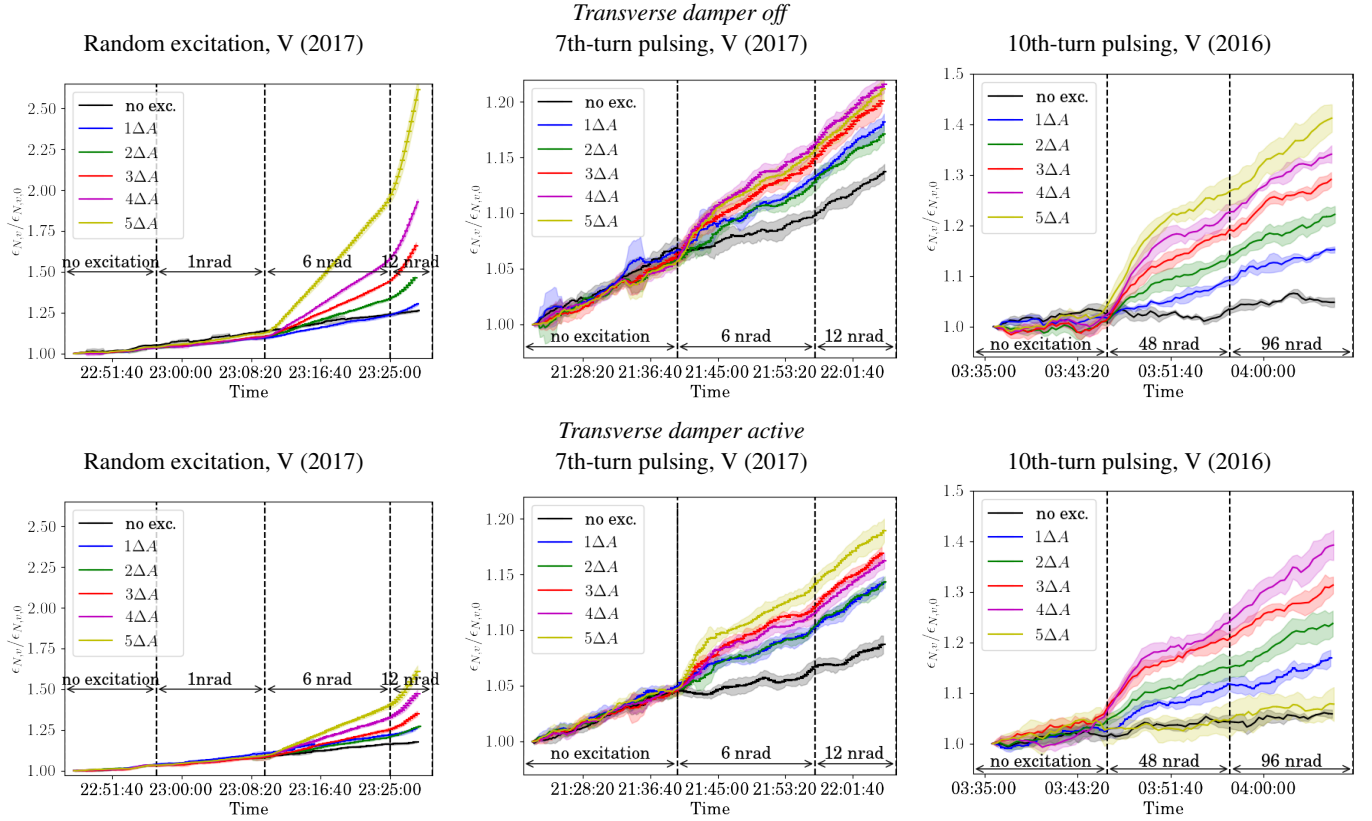


FIG. 32. Comparison of measured vertical emittances for bunches with transverse damper off (top row) and with transverse damper on (bottom row), during random V excitations (left), 7th-turn pulsing in V (center) and 10th-turn pulsing in V (right). (Because of a change in experimental setup, for the bunches represented by the yellow line in the bottom right plot, the excitation was zero instead of the maximum value.)

caused smooth emittance growth and widening Gaussian distributions. Resonant excitations generated a fast adjustment of the beam distribution to a new, non-Gaussian form, followed by a phase of steady evolution. This behavior was predicted in simulations and was clearly observed in measured synchrotron-radiation profiles. Potential systematic effects due to the synchrotron-radiation detection system were mitigated by directly comparing excited bunches with unaffected bunches used as controls. Another difference between the two types of excitation was the repeatability of the strength of the random excitation vs. the dependence of  $k$ th-turn pulsing on the order in which the excitations were implemented — later applications being weaker. This confirmed the hypothesis, emphasized by frequency-map analysis, that random kicks excite most of the beam, whereas resonant pulsing drives specific subsets of particles in tune or amplitude space. Finally, the transverse damping system strongly mitigated losses and emittance growth generated by random excitations, but had negligible effect on resonant pulsing patterns.

For active halo control in HL-LHC, resonant pulsing of the electron lenses, or the addition of a random noise component to continuous operation, may significantly extend the achievable range of halo removal rates. In these studies, we identi-

fied candidate excitation patterns (such as 8th-turn pulsing) that preserve the beam core, and their effects were quantified. As mentioned above, complementary calculations and experiments are needed to evaluate their efficacy for halo removal. Because of the complex dynamics, tolerances on residual kicks vary widely, from a few nanoradians for the most powerful (such as random at full strength or 7th-turn pulsing) to about a hundred nanoradians for the more benign (such as 8th-turn pulsing). The magnitude of the acceptable kicks depends on the excitation pattern, on machine lattice, and on the type of application (fast scraping before collisions vs. long-term tail suppression during the course of a physics fill, for instance). Of course, sensitivity to the experimental conditions may make resonant patterns less attractive than a small random noise component added to a constant kick.

These studies are the first systematic investigation of the effects of resonant excitations on the proton beam in the LHC. For practical reasons, the studies were done at injection energy. Because of the different lattices, working point, noise sources, etc. results at collision energy may be different and should be investigated.

Because of their flexibility, the experimental methods and modeling tools developed in this work can be applied more

generally to the investigation of other classes of resonant excitations, beyond pulsed hollow electron lenses for active halo control.

### ACKNOWLEDGMENTS

There are several people we would like to acknowledge for their support, insights, participation in studies, and assistance in data collection. In particular, Giulia Papotti offered essential support for machine operations and helped prepare the 2016 experiments. Roderik Bruce and Gianluca Valentino made important suggestions on the design of the experiments. Dmitry Shatilov shared his deep understanding of numerical tracking simulations with the LIFETRAC code. Stéphane Faroukh, Riccardo De Maria and Rogelio Tomás offered invaluable

assistance in generating the appropriate accelerator lattice models. We wish to thank Sergei Nagaitsev for the insightful discussions on the interaction between the transverse damping system and resonant excitations. We are grateful to Enrico Bravin, Georges Trad, and the whole beam instrumentation team for their crucial support on synchrotron-radiation diagnostics. We thank Stefania Papadopoulou and Fanouria Antoniou for the fruitful collaboration on the analysis of the synchrotron-radiation profiles.

This manuscript has been authored by Fermi Research Alliance, LLC under Contract No. DE-AC02-07CH11359 with the U.S. Department of Energy (DOE), Office of Science, Office of High Energy Physics. This work was partially supported by the U.S. DOE LHC Accelerator Research Program (LARP), by the European FP7 HiLumi LHC Design Study, Grant Agreement 284404, and by the High Luminosity LHC (HL-LHC) Project.

- 
- [1] S. Holmes, R. S. Moore, and V. Shiltsev, “Overview of the Tevatron collider complex: Goals, operations and performance,” *JINST* **6**, T08001 (2011).
- [2] J. Wenninger, “Approaching nominal performance at LHC,” in [46], pp. 13–18.
- [3] O. S. Brüning, P. Collier, P. Lebrun, S. Myers, R. Ostojic, J. Poole, and P. Proudlock, eds., *LHC Design Report*, Yellow Reports: Monographs, Vol. 1 (CERN, Geneva, Switzerland, 2004).
- [4] G. Apollinari, I. Béjar Alonso, O. Brüning, P. Fessia, M. Lamont, L. Rossi, and L. Tavian, eds., *High-Luminosity Large Hadron Collider (HL-LHC): Technical Design Report V. 0.1*, Yellow Reports: Monographs No. CERN-2017-007-M (CERN, Geneva, Switzerland, 2017).
- [5] M. Benedikt and F. Zimmermann, “Towards future circular colliders,” *J. Korean Phys. Soc.* **69**, 893 (2016).
- [6] M. Benedikt and F. Zimmermann, “FCC: Colliders at the energy frontier,” in *Proceedings of the 2018 International Particle Accelerator Conference (IPAC18)*, edited by S. Koscielniak, T. Satogata, V. R. W. Schaa, and J. Thomson (JACoW, Geneva, Switzerland, 2018) pp. 2908–2913.
- [7] G. Valentino, “What did we learn about halo population during MDs and regular operation?” in [8], <https://indico.cern.ch/event/567839> [Online; accessed 21-Mar-2018].
- [8] O. S. Brüning, ed., *Review of the Needs for a Hollow E-lens for the HL-LHC* (CERN, Geneva, Switzerland, 2016) <https://indico.cern.ch/event/567839> [Online; accessed 21-Mar-2018].
- [9] O. Brüning, O. Dominguez, S. Myers, L. Rossi, E. Todesco, and F. Zimmermann, “HE-LHC beam parameters, optics and beam-dynamics issues,” in *EuCARD-AccNet-EuroLumi Workshop: The High-Energy Large Hadron Collider (HE-LHC10)*, Yellow Reports: Conference Proceedings No. CERN-2011-003, edited by E. Todesco and F. Zimmermann (CERN, Geneva, Switzerland, 2011) pp. 7–12, [arXiv:1108.1617](https://arxiv.org/abs/1108.1617) [physics.acc-ph].
- [10] J. Molson, R. Bruce, A. Faus-Golfe, M. Fiascaris, A. M. Krainer, and S. Redaelli, “Status of the FCC-hh collimation system,” in [46], pp. 64–67.
- [11] R. Bruce, “Alternative methods for halo depletion (damper, tune modulation, and wire), long-range beam-beam and comparison of their performance / reliability to that of a hollow electron lens,” in [8], <https://indico.cern.ch/event/567839> [Online; accessed 21-Mar-2018].
- [12] G. Stancari, A. Valishev, G. Annala, G. Kuznetsov, V. Shiltsev, D. A. Still, and L. G. Vorobiev, “Collimation with hollow electron beams,” *Phys. Rev. Lett.* **107**, 084802 (2011).
- [13] “LHC optics web: HLLHCv1.3 — collision round 15 cm optics,” [http://abpdata.web.cern.ch/abpdata/lhc\\_optics\\_web/www/hllhc13/round15/index.html](http://abpdata.web.cern.ch/abpdata/lhc_optics_web/www/hllhc13/round15/index.html) [Online; accessed 22-Mar-2018].
- [14] G. Stancari, V. Previtali, A. Valishev, R. Bruce, S. Redaelli, A. Rossi, and B. Salvachua Ferrando, *Conceptual Design of Hollow Electron Lenses for Beam Halo Control in the Large Hadron Collider*, Tech. Rep. FERMILAB-TM-2572-APC, CERN-ACC-2014-0248 (Fermilab and CERN, 2015) [arXiv:1405.2033](https://arxiv.org/abs/1405.2033) [physics.acc-ph].
- [15] V. Shiltsev, K. Bishofberger, V. Kamerzhiev, S. Kozub, M. Kufer, G. Kuznetsov, A. Martinez, M. Olson, H. Pfeffer, G. Saewert, V. Scarpine, A. Seryi, N. Solyak, V. Sytnik, M. Tiunov, L. Tkachenko, D. Wildman, D. Wolff, and X.-L. Zhang, “Tevatron electron lenses: Design and operation,” *Phys. Rev. ST Accel. Beams* **11**, 103501 (2008).
- [16] W. Fischer, X. Gu, Z. Altinbas, M. Costanzo, J. Hock, C. Liu, Y. Luo, A. Marusic, R. Michnoff, T. A. Miller, A. I. Pikin, V. Schoefer, P. Thieberger, and S. M. White, “Operational head-on beam-beam compensation with electron lenses in the Relativistic Heavy Ion Collider,” *Phys. Rev. Lett.* **115**, 264801 (2015).
- [17] X. Gu, W. Fischer, Z. Altinbas, M. Anerella, E. Bajon, M. Bannon, D. Bruno, M. Costanzo, A. Drees, D. M. Gassner, R. C. Gupta, J. Hock, M. Harvey, A. K. Jain, J. P. Jamilkowski,

- P. Kankiya, R. Lambiase, C. Liu, Y. Luo, M. Mapes, A. Marusic, C. Mi, R. Michnoff, T. A. Miller, M. Minty, S. Nemesure, W. Ng, D. Phillips, A. I. Pikin, P. J. Rosas, G. Robert-Demolaize, T. Samms, J. Sandberg, V. Schoefer, T. C. Shrey, Y. Tan, R. Than, C. Theisen, P. Thieberger, J. Tuozzolo, P. Wanderer, W. Zhang, and S. M. White, “Electron lenses for head-on beam-beam compensation in RHIC,” *Phys. Rev. Accel. Beams* **20**, 023501 (2017).
- [18] Vladimir D. Shiltsev, *Electron Lenses for Super-Colliders* (Springer, 2016).
- [19] M. Fitterer, G. Stancari, A. Valishev, and S. Redaelli, *Simulation Study of Hollow Electron Beam Collimation in HL-LHC*, Tech. Rep. FERMILAB-TM-2636-AD (Fermilab, 2016).
- [20] M. Fitterer, G. Stancari, a. Valishev, R. De Maria, S. Redaelli, K. Sjobak, and J. F. Wagner, “Implementation of hollow electron lenses in SIXTRACK and first simulation results for the HL-LHC,” in [46], pp. 3795–3798.
- [21] M. Fitterer, G. Stancari, and A. Valishev, *Effect of Pulsed Hollow Electron-Lens Operation on the Proton Beam Core in LHC*, Tech. Rep. FERMILAB-TM-2635-AD (Fermilab, 2016).
- [22] X.-L. Zhang, K. Bishofberger, V. Kamerzhiev, V. Lebedev, V. Shiltsev, R. Thurman-Keup, and A. Tollestrup, “Generation and diagnostics of uncaptured beam in the Fermilab Tevatron and its control by electron lenses,” *Phys. Rev. ST Accel. Beams* **11**, 051002 (2008).
- [23] G. Stancari, *Calculation of the Transverse Kicks Generated by the Bends of a Hollow Electron Lens*, Tech. Rep. FERMILAB-FN-0972-APC (Fermilab, 2014) [arXiv:1403.6370](https://arxiv.org/abs/1403.6370) [physics.acc-ph].
- [24] I. A. Morozov, G. Stancari, A. Valishev, and D. N. Shatilov, “Simulation of hollow electron beam collimation in the Fermilab Tevatron collider,” in *Proceedings of the 3rd International Particle Accelerator Conference (IPAC12)*, FERMILAB-CONF-12-126-APC (IPAC’12 / IEEE, 2012) pp. 94–96, <http://accelconf.web.cern.ch/AccelConf/IPAC2012> [Online; accessed 21-Mar-2018].
- [25] G. Stancari, “Electron-beam simulations: Electron-gun emission and residual fields from measured profiles,” <https://indico.cern.ch/event/698949> [Online; accessed 22-Mar-2018] (2018), CERN meeting on hollow electron lens beam results.
- [26] *The WARP particle-in-cell code*, Lawrence Berkeley National Laboratory, <http://warp.lbl.gov> [Online; accessed 21-Mar-2018].
- [27] A. Friedman, R. H. Cohen, D. P. Grote, S. M. Lund, W. M. Sharp, J. L. Vay, I. Haber, and R. A. Kishek, “Computational methods in the Warp code framework for kinetic simulations of particle beams and plasmas,” *IEEE Trans. Plasma Sci.* **42**, 1321–1334 (2014).
- [28] “The Fermilab electron-lens test stand,” [https://cdcv.s.fnal.gov/redmine/projects/elens/wiki/Test\\_Stand](https://cdcv.s.fnal.gov/redmine/projects/elens/wiki/Test_Stand) [Online; accessed 22-Mar-2018].
- [29] Y. H. Jo, J. S. Kim, G. Stancari, M. Chung, and H. J. Lee, “Control of the diocotron instability of a hollow electron beam with periodic dipole magnets,” *Physics of Plasmas* **25**, 011607 (2018).
- [30] Ronald C. Davidson, *Physics of Nonneutral Plasmas* (World Scientific, 2001).
- [31] M. Fitterer, G. Stancari, A. Valishev, R. Bruce, P. S. Papadopoulou, G. Papotti, D. Pellegrini, S. Redaelli, G. Trad, D. Valuch, G. Valentino, J. Wagner, and C. Xu, *Effect of a Resonant Excitation on the Evolution of the Beam Emittance and Halo Population*, Tech. Rep. CERN-ACC-NOTE-2017-0037 (CERN, 2016).
- [32] M. Fitterer, G. Stancari, A. Valishev, R. Bruce, S. Redaelli, B. M. Salvachua Ferrando, D. Valuch, G. Valentino, J. Wagner, and C. Xu, *Effect of a Resonant Excitation on the Evolution of the Beam Emittance and Halo Population*, Tech. Rep. CERN-ACC-NOTE-2018-0007 (CERN, 2018).
- [33] G. Trad, *Development and Optimisation of the SPS and LHC Beam Diagnostics Based on Synchrotron Radiation Monitors*, Ph.D. thesis, Université de Grenoble, France (2015).
- [34] M. Fitterer and G. Stancari, *Analysis of BSRT Profiles in the LHC at Injection*, Tech. Rep. FERMILAB-TM-2657-AD-APC (Fermilab, 2017).
- [35] T. Linnekar, M. E. Angoletta, L. Arnaudon, P. Baudrenghien, T. Bohl, O. Brunner, A. Butterworth, E. Ciapala, F. Dubouchet, J. Ferreira Bento, D. Glenat, G. Hagemann, W. Höfle, C. Julie, F. Killing, G. Kotzian, D. Landre, R. Louwerse, P. Maesen, P. Martinez Yanez, J. Molendijk, E. Montesinos, C. Nicou, J. Noirjean, G. Papotti, A. Pashnin, G. Pechaud, J. Pradier, V. Rossi, J. Sanchez Quesada, M. Schokker, E. Shaposhnikova, R. Sorokoletev, D. Stellfeld, J. Tückmantel, D. Valuch, U. Wehrle, and F. Weierud, *Hardware and Initial Beam Commissioning of the LHC RF Systems*, Tech. Rep. LHC-PROJECT-Report-1172 (CERN, 2008).
- [36] W. Höfle, G. Kotzian, M. Schokker, and D. Valuch, *LHC Damper Beam Commissioning in 2010*, Tech. Rep. CERN-ATS-2011-033 (CERN, 2011).
- [37] X. Buffat, J. Barranco García, T. Pieloni, C. Tambasco, and D. Valuch, “Observations of emittance growth in the presence of external noise in the LHC,” in [46], pp. 2117–2120.
- [38] J. Laskar, “Frequency map analysis and particle accelerators,” in *Proceedings of the 2003 Particle Accelerator Conference (PAC03)*, edited by J. Chew, P. Lucas, and S. Webber (IEEE, 2003) p. 378.
- [39] D. N. Shatilov, Y. Alexahin, V. Lebedev, and A. Valishev, “LIFETRAC code for the weak-strong simulation of the beam-beam effects in Tevatron,” in *Proceedings of the 2005 Particle Accelerator Conference (PAC05)*, FERMILAB-CONF-05-246-AD, edited by C. Horak (IEEE, 2005) p. 4138.
- [40] X. Buffat, N. Biancacci, S. V. Furuseth, D. Jacquet, E. Metral, D. Pellegrini, M. Pojer, G. Trad, D. Valuch, J. Barranco Garcia, T. Pieloni, C. Tambasco, and Q. Li, *Probing the Behaviour of High Brightness Bunches in Collision at 6.5 TeV and the Interplay with an External Source of Noise (MD 1433)*, Tech. Rep. CERN-ACC-NOTE-2017-0030 (CERN, 2017).
- [41] J. Barranco Garcia, X. Buffat, T. Pieloni, C. Tambasco, G. Trad, D. Valuch, M. Betz, M. Wendt, M. Pojer, M. Solfaroli Camillocci, B. M. Salvachua Ferrando, K. Fuchsberger, M. Albert, and J. Qiang, *MD 400: LHC Emittance Growth in Presence of an External Source of Noise during Collision*, Tech. Rep. CERN-ACC-NOTE-2016-0020 (CERN, 2016).
- [42] V. A. Lebedev, “Emittance growth due to noise and its suppression with the feedback system in large hadron colliders,” *AIP Conf. Proc.* **326**, 396–423 (1995).



- [43] Y. I. Alexahin, “On the emittance growth due to noise in hadron colliders and methods of its suppression,” *Nucl. Instrum. Methods Phys. Res. A* **391**, 73–76 (1997).
- [44] K. Ohmi, R. Calaga, R. Tomás, W. Höfle, and F. Zimmermann, “Beam-beam effects with an external noise in LHC,” in *Proceedings of the 22nd Particle Accelerator Conference (PAC07)*, edited by C. Petit-Jean-Genaz (2007) p. 1496.
- [45] K. Ohmi, “Beam-beam effects under the influence of external noise,” in *Proceedings of the ICFA Mini-Workshop on Beam-Beam Effects in Hadron Colliders (BB2013)*, Yellow Reports: Conference Proceedings No. CERN-2014-004, edited by W. Herr and G. Papotti (CERN, Geneva, Switzerland, 2014) pp. 69–74, [arXiv:1410.4092](https://arxiv.org/abs/1410.4092) [physics.acc-ph].
- [46] G. Arduini, M. Lindroos, J. Pranke, V. R. W. Schaa, and M. Seidel, eds., *Proceedings of the 2017 International Particle Accelerator Conference (IPAC17)* (JACoW, Geneva, Switzerland, 2017).