

COMPACT RING-BASED X-RAY SOURCE WITH ON-ORBIT AND ON-ENERGY LASER-PLASMA INJECTION

Marlene Turner^{1*}, CERN, Geneva, Switzerland

Jeremy Cheatam, Auralee Edelen, CSU, Fort Collins, Colorado, USA

Osip Lishilin, DESY Zeuthen, Zeuthen, Germany

Aakash Ajit Sahai, Imperial College Physics, London, Great Britain

Andrei Seryi, JAI, Oxford, Great Britain

Brandon Zerbe, MSU, East Lansing, MI, USA

Andrew Lajoie, Chun Yan Jonathan Wong, NSCL, East Lansing, MI, USA

Kai Shih, SBU, Stony Brook, New York

James Gerity, Texas A&M University, College Station, TX, USA

Gerard Lawler, UCLA, Los Angeles, CA, USA

Kookjin Moon, UNIST, Ulsan, Korea

¹also at Technical University of Graz, Graz, Austria

Abstract

We report here the results of a one week long investigation into the conceptual design of an X-ray source based on a compact ring with on-orbit and on-energy laser-plasma accelerator (mini-project 10.4 from [1]). We performed these studies during the June 2016 USPAS class "Physics of Accelerators, Lasers, and Plasma..." applying the art of inventiveness TRIZ [2]. We describe three versions of the light source with the constraints of the electron beam with energy 1 GeV or 3 GeV and a magnetic lattice design being normal conducting (only for the 1 GeV beam) or superconducting (for either beam). The electron beam recirculates in the ring, to increase the effective photon flux. We describe the design choices, present relevant parameters, and describe insights into such machines.

INTRODUCTION

Laser wakefield acceleration [3] experiments (LWFA) achieved GeV electron energies in cm-scales using plasma waves [4–6]. In this paper we explore a compact synchrotron light source, that uses a laser wakefield accelerated electron beam in combination with a conventional lattice. We outline a design that produces 0.4 keV (water-window) or 10 keV photons and we estimate the design parameters of the compact light source, the achievable brilliance, and we discuss the feasibility and challenges of the design. Our design uses the state of the art technology including a laser plasma gas-jet accelerator, a quadrupole doublet to focus and confine the beam, four 90 degree dipole bending magnets (superconducting or normal conducting) to keep the beam on a periodic lattice, and a 2 m long wiggler magnet to produce the desired radiation. We do not study the radiation emitted by the bending magnets, or the betatron oscillations of the electron beam in the plasma bubble.

A schematic of the design is in Fig. 1, and the investigated design criteria are detailed below:

* marlene.turner@cern.ch

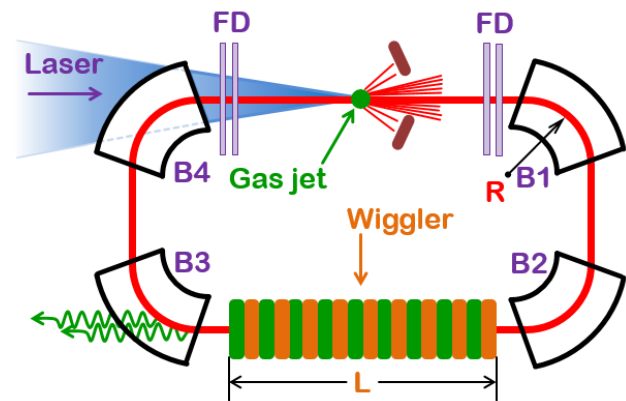


Figure 1: Schematics of the compact ring design. The laser beam enters through a window in the B4 dipole bending magnet, ionizes the gas jet and creates strong plasma wakefields to self-inject and accelerate electrons. Furthermore the produced electron beam gets parallelized with a quadrupole focusing doublet (FD). The electron beam is held on a circular trajectory by four 90-degree bending magnets (B1–B4). Opposite to the plasma injector, a Wiggler magnet produces the desired radiation. A second FD is used to refocus the circulated beam.

- 0.4 keV photons produced by a 1 GeV electron beam and normal-conducting magnets.
- 0.4 keV photons produced by a 1 GeV electron beam and super-conducting magnets.
- 10 keV photons produced by a 3 GeV electron beam and super-conducting magnets.

DESIGN OF THE MACHINE

Plasma Based Self-injected Electron Accelerator

The laser wakefield acceleration with self-guiding and self-injection provides the electron beam for the compact ring. An intense 500 TW-class Ti:Sapphire CPA system is

injected through a window in one of the bending dipoles (B4 in Fig. 1), impinges on a gas jet, ionizes the gas and creates strong plasma wakefields that accelerate the self-injected electron beam to GeV-energies. The chosen laser and plasma parameters are summarized in Tables 1 and 2. Based on existing systems, we choose laser parameters achievable in the near future [7]. A Ti:Sapphire laser system with a laser wavelength of $\lambda_l = 780$ nm, a pulse duration of 45 fs, a maximum laser power of 400 TW, 30 J of energy per pulse, and a laser spot size radius of 37 μm . The laser intensity I is then approximately 10^{19} W/cm² which corresponds to a laser strength parameter a_0 of about 2.1 for a Gaussian radial laser distribution.

$$a_0 \approx \left(\frac{I[\text{W}/\text{cm}^2]}{1.37 \times 10^{18}} \right)^{\frac{1}{2}} \cdot \lambda_l [\mu\text{m}] \quad (1)$$

The chosen plasma density of the gas-jet is $n = 1.75 \times 10^{17}$ cm⁻³ and optimizes the achievable maximum electron energy. The laser frequency $\omega_l = 2.4 \times 10^{15}$ rad/s is above the critical plasma frequency $\omega_{pc} = 2.5 \times 10^{13}$ rad/s.

The depletion L_{dpl} and dephasing L_{dph} length [8] for these laser-plasma parameters are estimated with:

$$L_{dpl} = \frac{1}{2a_0} \frac{\lambda_p^3}{\lambda_l^2}, L_{dph} = \frac{1}{4} \frac{\lambda_p^3}{\lambda_l^2} \quad (2)$$

to be $L_{dpl} \approx 17$ cm and $L_{dph} \approx 20$ cm, thus 17 cm is the upper bound on our total possible acceleration length. The maximum accelerating gradient E_{max} is estimated based on the cold plasma wave-breaking field (3) to be 400 MeV/cm.

$$E_{max} \sim \frac{mc\omega_p}{e} \quad (3)$$

This means that our target energies of 1 GeV and 3 GeV can be reached with an acceleration length of 2.5 cm (~ 4.4 Rayleigh lengths z_r) and 7.5 cm (~ 13.1 z_r). This acceleration length is longer than gas jets in use presently (≈ 5 mm) and may require a novel gas jet setup, particularly for the 3 GeV beam.

In this design, we rely on analytic estimates rather than on the results of 3D simulations of the setup. Consequently, for the remainder of the ring calculations we used electron beam parameters that are typically achievable with similar laser wakefield acceleration stages [9]. The electron beam size is chosen to be $\sigma_r \approx \sigma_z \approx 1 \frac{c}{\omega_p} \approx 12 \mu\text{m}$. The electron energy spread is $\frac{\Delta E}{E_0} = 2\%$. The beam divergence is chosen to be $\sigma_\theta = 0.5$ mrad. Reasonable bunch charge for the 1 GeV and 3 GeV electron beams are 10 pC and 7 pC [10].

Magnet Design

The design of the compact ring (see Figure 1) is laid out as four 90-degree sector dipoles, either 10 T super-conducting (s.c.) or 1.5 T normal conducting (n.c.). Parameters for the bending magnets are shown in Table 3. The laser-plasma accelerator system is located in the middle of a 2 m drift, enclosed by a pair of focusing quadrupole doublets (strengths

Table 1: Ti:sapphire Laser Parameters

Laser wavelength	780 nm
Laser power	379 TW
Spot size radius	37 μm
Intensity	10^{19} W/cm ²
a_0	2.1
Laser pulse length (FWHM)	45 fs
Pulse replate (f_{rep})	1 Hz
Pulse Energy	30 J

Table 2: Plasma Parameters

Plasma density	1.75×10^{17} cm ⁻³
Accelerating gradient	0.4 GeV/cm
Bubble radius	37 μm
Depletion length	16.9 cm
Dephasing length	20 cm
Acceleration length for 1 GeV	2.4 cm
Acceleration length for 3 GeV	7.2 cm

~ 50 T/m, 100 T/m) used to begin transport of the diverging electron beam. The focusing strengths of the quadrupole magnets were estimated to parallelize/focus an electron beam with parameters outlined in the previous section. The doublet upstream the gas-jet focuses the electron beam to avoid interaction with residual plasma (see Discussion section). Dipole magnets provide weak- and edge- focusing in the horizontal plane. Assuming the betatron tune to be $Q = 0.3$, we can estimate the average beta function $\bar{\beta}$ using:

$$2\pi Q = \oint \frac{ds}{\beta(s)} = \frac{C}{\bar{\beta}} \quad (4)$$

where C is the circumference of the ring. The horizontal Δx and vertical Δy beam sizes are estimated based on the bending radius ρ and the circumference C . The average dispersion function \bar{D} was evaluated based on Eq. (5):

$$\bar{D} \approx \rho \quad (5)$$

We performed a MAD-X [11] optics calculation after the school to confirm these estimates.

The wiggler is located in the drift space between B2 and B3, and the remaining two drift spaces are each 0.5 m leaving enough space for limited diagnostics and collimators. The electron energy loss per turn is dominated by the synchrotron radiation loss E_{sr} in the bending magnets and ranges from 40 keV to 7 MeV. The energy radiated in the Wiggler magnet E_{rad} is listed in Table 4. There is no re-accelerating section in our compact ring design. This means that the beam loses energy and drifts off from the central orbit. Therefore, the number of turns N_{turns} is limited by the selected 10 cm horizontal apertures x_{max} of the bending magnets. The number of turns was calculated according to Eq. (6), by taking the $2\sigma_r$ radial electron beam size, and calculating how much energy can be lost before the beam touches the horizontal

magnet aperture.

$$N_{turns} = \frac{(x_{max} - 2\Delta x)}{\bar{D}} \frac{E_{beam}}{E_{sr}/turn} \quad (6)$$

Table 3: Optics- and Dipole Magnet Parameters

Parameter	1 GeV n.c.	1 GeV s.c.	3 GeV s.c.
Ben. field	1.5 T	10 T	10 T
Ben. radius ρ	2.23 m	0.33 m	1.02 m
C	19.1 m	7.1 m	9.4 m
$\bar{\beta}$	10.1 m	3.8 m	5 m
$\Delta x/\Delta y$	4.5/0.05 cm	0.68/0.05 cm	2/0.05 cm
$E_{sr}/turn$	40 keV	260 keV	7 MeV
N_{turns}	62	490	13
\bar{D}	2.23 m	0.33 m	1.02 m

Radiation Production

Table 4 details the radiation source parameters for all considered design versions. We choose a length of $L = 2$ m for the undulating magnetic field region, where the electron bunch emits an approximately 6.7 ns-long X-ray pulse at each turn through the B3 aperture before beam loss. As shown in the table, we designed the X-ray energy E_{ph} to either be within the water window (0.4 keV) or to be fairly hard (10 keV) depending on the energy of the injected electron beam. The chosen parameters result in the source being near the wiggler/undulator transition or well within the wiggler regime, respectively, as can be seen by the parameter K. The brilliance per electron passage in the wiggler B_{spill} was estimated based on Eq. (7):

$$B_{spill} = \frac{N_{ph}L}{\pi\Delta x\Delta y\theta_v\theta_h\Delta t} \cdot N_{elec} \quad (7)$$

and the brilliance per electron lifetime B_{e-life} :

$$B_{e-life} = \frac{N_{ph}L}{\pi\Delta x\Delta y\theta_v\theta_h} \cdot N_{elec} \cdot f_{rep} \cdot N_{turns} \quad (8)$$

where N_{ph} is the number of photons emitted per unit length (from Eq. (3.22) of [1]), N_{elec} is the number of electrons in

Table 4: Chosen (upper section) and Derived (lower section) X-ray Source Parameters

Parameter	1 GeV n.c.	1 GeV s.c.	3 GeV s.c.
E_{ph} (keV)	0.4	0.4	10.0
$\lambda_{wiggler}$ (mm)	15	15	100
$B_{wiggler}$ (T) [12, 13]	0.60	0.60	1.7
K	0.84	0.84	16
E_{rad} (keV)	2.1	2.1	140
B_{e-life} ($\frac{\text{photons}}{\text{mm}^2\text{mrad}^2\text{s}}$)	2×10^{10}	9×10^{10}	1×10^{10}
B_{spill} ($\frac{\text{photons}}{\text{mm}^2\text{mrad}^2\text{s}}$)	5×10^{15}	8×10^{15}	3×10^{15}
train durat. (μs)	3.9	12	0.47

3: Advanced Acceleration Techniques and Alternative Particle Sources

A16 - Advanced Concepts

the beam, f_{rep} is the frequency of electron injection (1 Hz) and Δt the time per revolution. The emission angles θ_h and θ_v are estimated with $\theta_h = \Delta x/(2C)$ and $\theta_v = \Delta y/(2C)$.

Of the chosen parameter sets, the 1 GeV electrons with the superconducting bending magnets (10 T) resulted in the largest brightness. We also want to note that these brightness estimates include only the radiation from the B3 aperture, not including the synchrotron radiation produced by B3.

DISCUSSION

One of the concerns of the re-circulating design is that the gas/plasma from the injector resides in the lattice longer than it takes the electron beam to circulate in the ring. The gas flow velocity from typical gas jets is $M = 20$ km/s [14], and one electron beam turn in a 10 m circumference ring takes ~ 30 ns. Thus the gas flow advances by $\sim 600 \mu\text{m}$ and will therefore still be in the path of the beam for much of its residence time. Taking $\sim 10^{14}$ W/cm² as ionization threshold of the plasma and assuming a radial laser size of $35 \mu\text{m}$ gives a plasma channel radius of $140 \mu\text{m}$. This estimate suggests that the plasma column has already propagated far enough to eliminate the possibility of any further interaction with the beam. So, the electron beam is only likely to interact with the residual gas and not the laser-ionized plasma column. Thus, the interaction process of the beam is dominated by random scattering off the gas, which leads to a divergence growth of the order of micro-rad, as opposed to a coherent lensing of the order of milli-rad by the plasma [15]. Electron beam of pC charge with a beam size of $\sigma_r = 5 \mu\text{m}$ and $\sigma_z = 10 \mu\text{m}$ is not dense enough to ionizes the gas.

Apart from using the radiation created by the wiggler, it would also be possible to use the radiation from the bending magnets or the X-rays produced by the betatron oscillations of the electron beam in the bubble [16]. A Compton light source could also be realized by making the electron bunch collide with a laser pulse.

CONCLUSIONS

In this paper we proposed different design solutions for a compact ring-based X-ray source with an on-orbit and on-energy laser-plasma accelerator. We considered four 90 degrees bending magnets to keep the particles on a circular orbit and the desired radiation is created by a wiggler magnet. The peak brilliance is as high as 8×10^{15} photons/(mm²mrad²s). Even though modern, 3rd and 4th generation, light sources routinely create a peak brilliance in the order of 10^{25} photons/(mm²mrad²s 0.1%BW) [17], this design can be considered attractive due to its compactness and small footprint. This design would be suitable for use in, for example, a university setting. Future work should include plasma simulations to obtain better estimates for the electron beam parameters, optics optimization and particle tracking to obtain electron beam sizes, studies on the gas-jet design, further investigations on the electron scattering on the residual gas, and a more detailed description of the magnet design.

REFERENCES

- [1] A. Seryi, “Unifying physics of accelerators, lasers and plasma”, CRC Press, 2015, <https://www.crcpress.com/Unifying-Physics-of-Accelerators-Lasers-and-Plasma/Seryi/p/book/9781482240580>.
- [2] E. Seraia and A. Seryi, “Accelerating Science TRIZ inventive methodology in illustrations”, arXiv:1608.00536, <http://arxiv.org/abs/1608.00536>.
- [3] T. Tajima and J. M. Dawson, “Laser Electron Accelerator”, Phys. Rev. Lett. **43**, pp.267-270, 1979, <http://link.aps.org/doi/10.1103/PhysRevLett.43.267>.
- [4] A. Pukhov and J. Meyer-Ter-Vehn, “Laser wake field acceleration: the highly non-linear broken-wave regime”, Appl. Phys. B **74**, pp.355-361, 2002, <http://dx.doi.org/10.1007/s003400200795>.
- [5] S. P. D. Mangles *et al.*, “Monoenergetic beams of relativistic electrons from intense laser-plasma interactions”, Nature **431**, 535, 2004, <http://dx.doi.org/10.1038/nature02939>
- [6] C. G. R. Geddes *et al.*, “High-quality electron beams from a laser wakefield accelerator using plasma-channel guiding”, Nature **431**, 538, 2004, <http://dx.doi.org/10.1038/nature02900>
- [7] V. Yanovsky *et al.*, “Ultra-high intensity 300-TW laser at 0.1 Hz repetition rate”, Vol. 16, Issue 3, pp. 2109-2114, 2008, <http://dx.doi.org/10.1364/OE.16.002109>,
- [8] E. Esarey *et al.*, “Physics of laser-driven plasma-based electron accelerators”, Rev. Mod. Phys. **81**, 1229, <http://dx.doi.org/10.1103/RevModPhys.81.1229>.
- [9] W. P. Leemans *et al.*, “Multi-GeV Electron Beams from Capillary-Discharge-Guided Subpetawatt Laser Pulses in the Self-Trapping Regime”, Phys. Rev. Lett. **113**, 245002, <http://dx.doi.org/10.1103/PhysRevLett.113.245002>.
- [10] S. Kneip *et al.*, “Near-GeV Acceleration of Electrons by a Nonlinear Plasma Wave Driven by a Self-Guided Laser Pulse”, Phys. Rev. Lett. **103**, 035002, <http://journals.aps.org/prl/abstract/10.1103/PhysRevLett.103.035002>.
- [11] H. Grote and F. Schmidt, “MAD-X – An Upgrade from MAD8”, CERN-AB-2003-024 ABP.
- [12] N. A. Mezentsev, “Survey of superconducting insertion devices for light sources”, Proceedings of 2005 Particle Accelerator Conference, Knoxville, Tennessee, <http://accelconf.web.cern.ch/AccelConf/p05/PAPERS/TOAA003.PDF>.
- [13] Y. Ivanyushenkov *et al.*, “Development and operating experience of a short-period superconducting undulator at the Advanced Photon Source”, Phys. Rev. ST Accel. Beams **18**, 040703, <http://dx.doi.org/10.1103/PhysRevSTAB.18.040703>.
- [14] S. Semushin and V. Malka, “High density gas jet nozzle design for laser target production”, Review of Scientific Instruments **72**, 2961, 2001, <http://dx.doi.org/10.1063/1.1380393>
- [15] A. A. Sahai, “Beam interaction with Plasma-Vacuum interface”, CLIC Experimental & Breakdown Studies Meeting, August 2013., <http://indico.cern.ch/event/269506/contributions/607723/>
- [16] A. Rousse *et al.*, “Production of a keV X-ray beam from synchrotron radiation in relativistic laser-plasma interaction”, Phys. Rev. Lett. **93**, 135005, 2004, <http://dx.doi.org/10.1103/PhysRevLett.93.135005>.
- [17] M. Abd-Elmeguid *et al.*, “TESLA, Technical Design Report”.