


Key technologies for present and future optical networks


Jean-Christophe ANTONA

ALCATEL, Nozay, FRANCE

Jean.Christophe.anton@alcatel-lucent.com

Alcatel-Lucent 

Key technologies for present and future optical networks



Jean-Christophe ANTONA
Research manager, Dynamic Optical Networks
Alcatel-Lucent, Bell-Laboratories,
Route de Villejust, 92620 NOZAY - FRANCE

All Rights Reserved © Alcatel-Lucent 2009

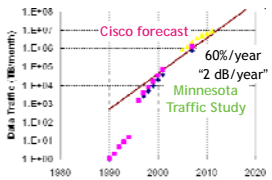
The need for digital transport is growing exponentially

Information is of little use if you have to keep it to yourself

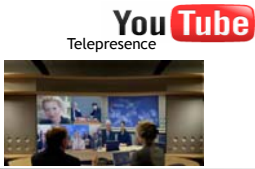
- Humans have a desire to interact (Cell phones, YouTube, ...)
- Requires huge transport capacities (especially for real time app's)

Computers also want to talk:

- 1 Flop triggers -1 Byte/s of transport
- Coupled with exponential growth in computing power



tv ORF.at on demand



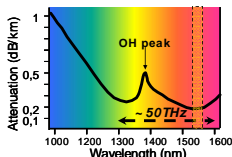
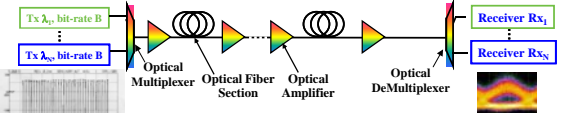
All Rights Reserved © Alcatel-Lucent 2009

Fiber-optic transmission systems to provide high capacity - Basics

- Guided, isolated from ext. interferences
- Very low attenuation**
 - 0.3dB/km @ 1310nm
 - 0.2dB/km @ 1550nm (down to -0.16dB/km)

Huge available bandwidth → high capacities ?

- Virtually 50THz
- In practice, operate w/ 4-5THz bandwidth all-optical Erbium Doped Fiber Amplifiers

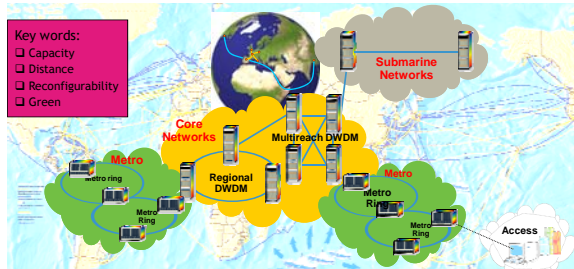



Wavelength Division Multiplexing
Typical bandwidth: 1529-1565nm
50-100GHz channel spacing

Capacity = sum of channel rates

All Rights Reserved © Alcatel-Lucent 2009

Optical Networks in Telecommunications ? Everywhere



Key words:

- Capacity
- Distance
- Reconfigurability
- Green

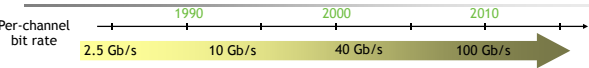
Optical network to support the continuous increase of multimedia traffic

- from submarine & terrestrial down to metro/access networks
- from point to point → multi-point to multi-point → reconfigurable networks

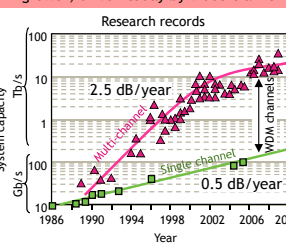
All Rights Reserved © Alcatel-Lucent 2009

Trends in Telecommunications - from Capacity explosion ...

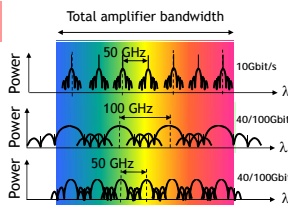
Greater capacity into a single fiber



Trend #1: greater capacity → exponential growth, driven today by video traffic



Research records



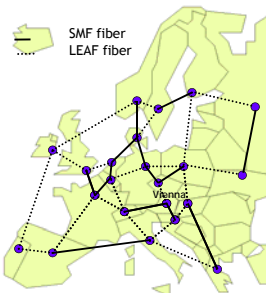
Key points:

- Increase total capacity, not only channel rate!
- Reach the same distances as with today's rate

All Rights Reserved © Alcatel-Lucent 2009

Trends in Telecommunications - ... to Operational Automation

Transparent, reconfigurable mesh networks



Trend #2: Higher transparency → photonic pass-through, eliminates regeneration

Key points:

- Bridge longer distances
- Mix bit-rates over the same fiber
- Mix several fiber types across full fiber path

Trend #3: Full remote reconfigurability → remotely configure a given wavelength

Key points:

- Eliminates need to forecast traffic
- Eliminates manual intervention
- Provides restoration/protection with resource opt.
- Feeds ctrl plane with photonics parameters...

Trend #4: Energy consumption reduction

Key points:

- Keep track of power-sensitive building blocks
- Photonic bioassimilation of electronic processing

Solutions to transform WDM to manageable networking photonic layer are implemented
Still space for research, innovation, product evolution

All Rights Reserved © Alcatel-Lucent 2009



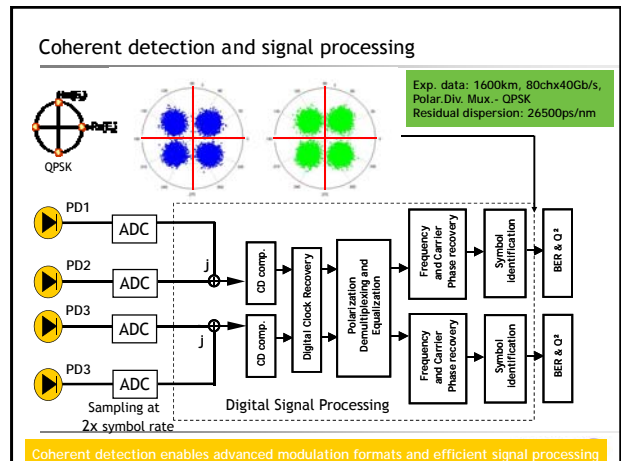
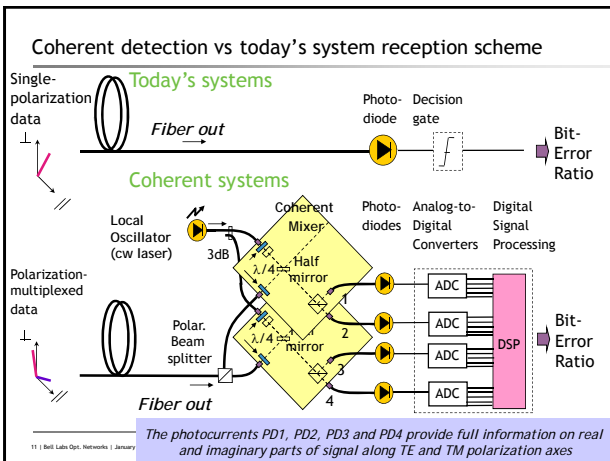
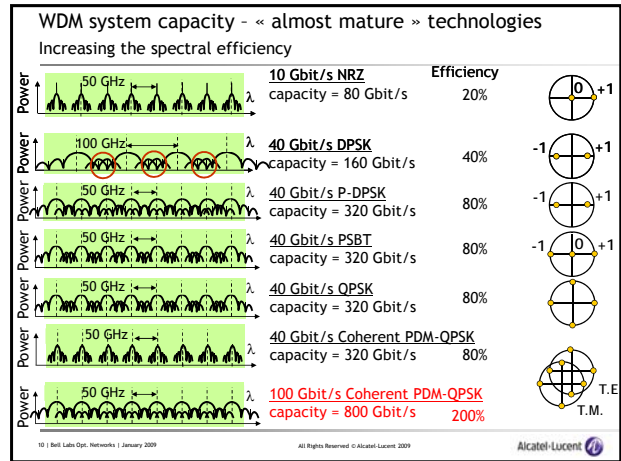
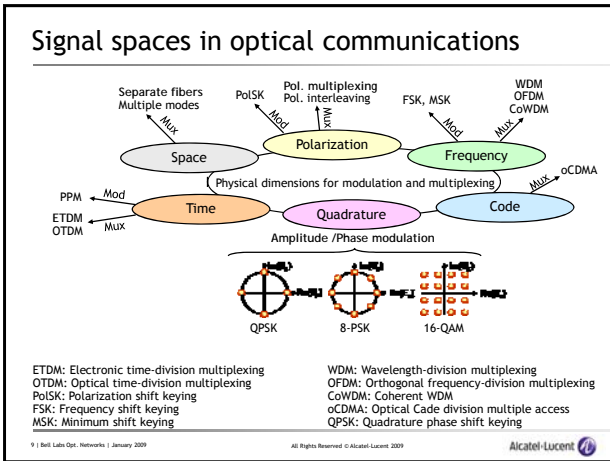
System Evolution in metro/core terrestrial networks
 $SE = \text{Spectral Efficiency} = \text{Channel Bit Rate} / \text{Channel Spacing (b/s/Hz)}$

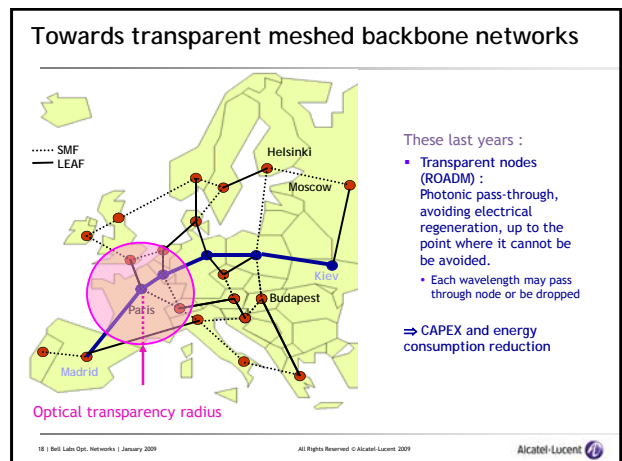
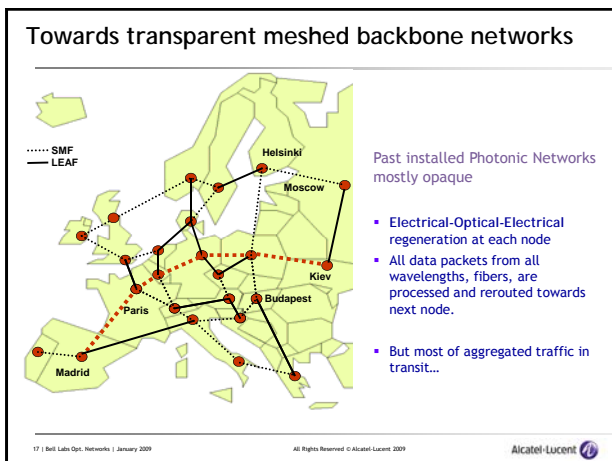
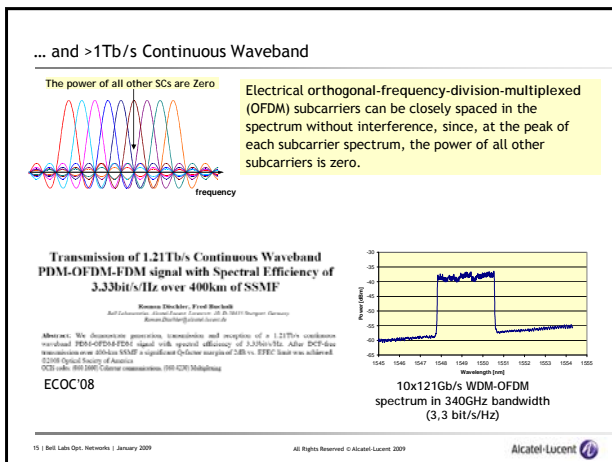
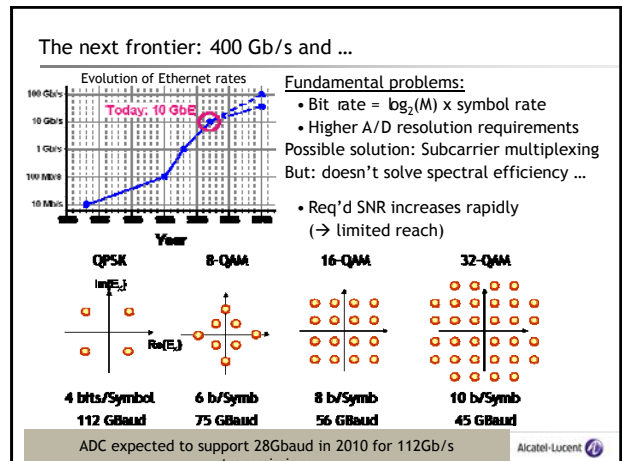
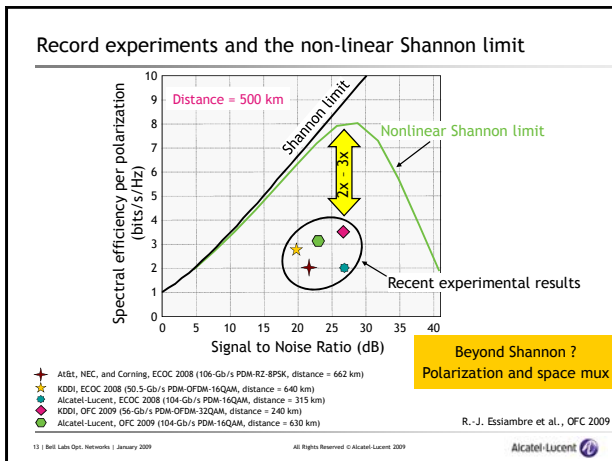
1990s	2000	2010	2020
> 2.5-10 Gb/s channel rate	> 10 Gb/s channel rate	> 100 Gb/s channel rate	> 1 Tb/s / channel rate
> 8, 16, 40 channels	> 100 channels	> 100 channels	> 100 channels
> 20-160 Gb/s Capacity	> 1 Tb/s Capacity	> 10 Tb/s Capacity	> 100 Tb/s Capacity
> SE = .025-.05	> SE = 0.2	> SE = 2.0	> SE = 20 !
<i>History</i>	<i>History</i>	<i>Planned</i>	<i>Needed</i>

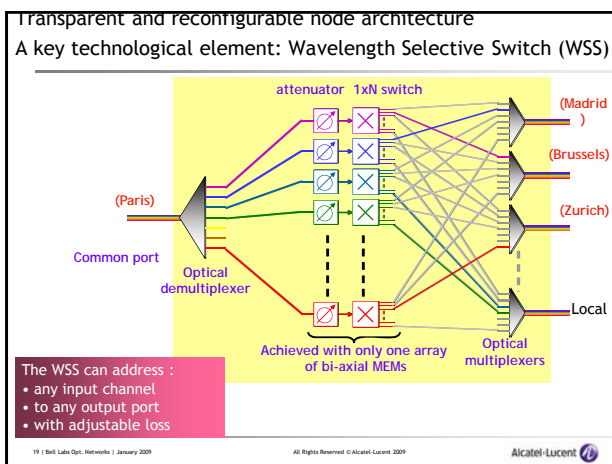
→ When the channel bit-rate increases, the system capacity increases only if the spectral efficiency increases.

Even w/ aggressive 2020 target, traffic growth will exceed capacity growth by factor 10

8 | Bell Labs Opt. Networks | January 2009 All Rights Reserved © Alcatel-Lucent 2009 Alcatel-Lucent







Challenges related to transparent networks

Wavelength-selective switches' based nodes enable slow wavelength switching

Optoelectronic conversion occurs when

- Passing through an electronic packet router to enter/exit the network
- Physical limitations require optoelectronic regeneration

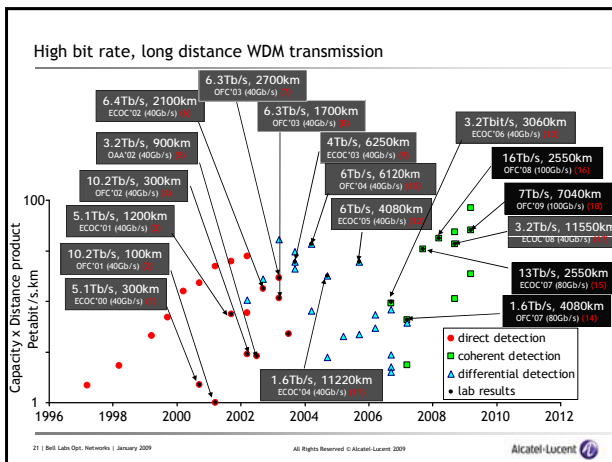
Efficiency in resources dimensioning requires

- A fine tool to predict quality of transmission, accounting for:
- And a planning tool to assign routes, wavelengths and resources

Efficiency of transparency may require to reach long distances (1500km)

- Whatever the bit-rate...
 - Need efficient solutions: FEC, modulation format, fiber, link design, amplification scheme
 - Ex: Forward Error Correction enables error-free operation from $4 \cdot 10^{-3}$ BER with 7% overhead
 - 10Gb/s useful data rate \leftrightarrow 10.7Gb/s effective bit rate in optical systems
 - Lab experiment: 160x100Gb/s over 2550km (OFC, 2008): 40 Petabit/s x km

20 | Bell Labs Opt. Networks | January 2009

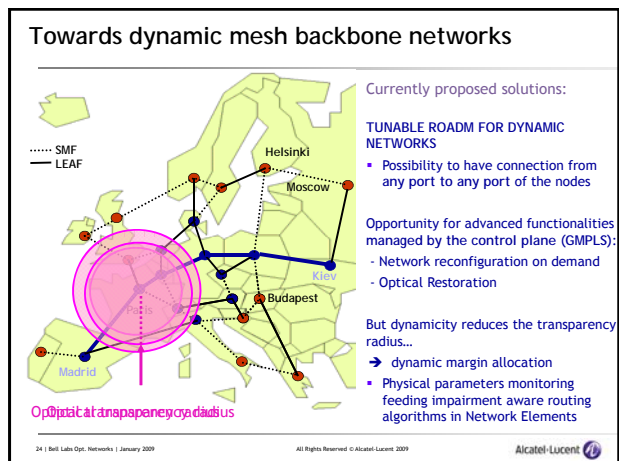


A few words on submarine networks

Submarine systems

- Point to point connections with possible fixed optical add/drop multiplexers
- From few 100km (unrepeated) to 6000-12000km, w/ all-optical amplifiers
- Industrial solutions today: more than 100 x 10Gb/s
 - Under development: 40Gb/s per channel
- Research lab record: Capacity x distance product: $C \times D = 112 \text{Pbit/s} \cdot \text{km}$
 - 155x100Gbit/s over 7,200km (G.Charlet et al, ECOC, September 2009)
 - Based on 0.166dB/km fiber from Sumitomo
 - Coherent PDM-QPSK
 - Raman+Erbitium amplification
 - Bit-Error Rate better than $4 \cdot 10^{-3}$ before Error Correction

22 | Bell Labs Opt. Networks | January 2009



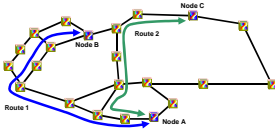
Dynamic Transparent Networks. What for ?

Rapid, on-demand wavelength reconfiguration in transparent networks

- New wavelength services provisioned & re-routed on demand
 - Push time scales from hours and days down to milliseconds and seconds, **less human intervention**
- Lightpath modification using transparent switching elements

Unification of network reconfiguration and restoration

- Single mechanism provides reconfiguration
 - On demand or event triggered (failure)
 - Higher layer or physical layer



Wavelength on route 1 from node A to B is reconfigured to route 2 from node A to C

- No operator intervention required
- Optical switching or restoration

25 | Bell Labs Opt. Networks | January 2009

All Rights Reserved © Alcatel-Lucent 2009

Alcatel-Lucent

Research trends

Variable Bit-Rate optoelectronic terminals

Allow optical channels to run at a range of rates to accommodate different conditions

- Accommodate both variations in client requirements and limitations of the physical channel

OPEX impact arises from simplicity of deployment and inventory

- One linecard for multiple applications
- Hardware can remain the same when upgrading capacity
- Degradation in physical plant can be dealt with by scaling back the rate rather than repair - analogous to modems

Progressive equipment investment, energy consumption, adapted to network needs

Total network capacity can be increased with zero blocking probability.

26 | Bell Labs Opt. Networks | January 2009

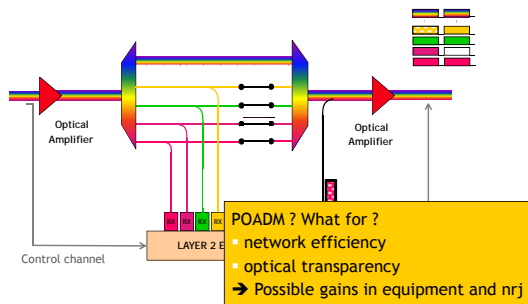
All Rights Reserved © Alcatel-Lucent 2009

Alcatel-Lucent

Research trend: Optical Packet Switching

Packet Optical Add/Drop Multiplexer (POADM)

Market segment: Metro ring network with add/drop features at nodes



27 | Bell Labs Opt. Networks | January 2009

All Rights Reserved © Alcatel-Lucent 2009

Alcatel-Lucent

TREND 4: GO GREENER

Energy bill of telecommunications, and telecommunication networks

Telecommunications to save energy ?

- Remote conferencing instead of long-reach travels...

Energetic cost of transmitted bit per km decreases with time

- But data traffic needs increases exponentially, at faster rate

A few figures

- Google data centers consumes 100s of MW (of which 50% in cooling)
- British Telecom is the largest energy consumer in UK.
- In 2015, routers in Japan to consume 15% of national electric energy
- CISCO router supporting 92Tb/s w/ 40G linecards consumes more than 1MW

Energy control is a big challenges to face, with an important role for optics

- Avoid unnecessary electronic processing (transparency, optical by-pass)
- Energy-aware dynamic network solutions, adapted to traffic evolutions
- Integrated components, such as Photonic Integrated Circuits

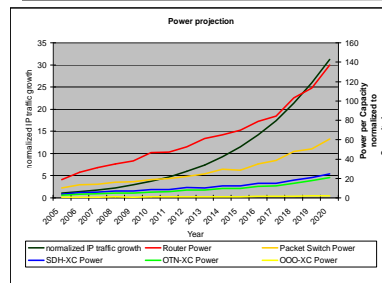
29 | Bell Labs Opt. Networks | January 2009

All Rights Reserved © Alcatel-Lucent 2009

Alcatel-Lucent

An interesting picture about power consumption

Power Consumption vs. Network Capacity trend for different network functions



Hypotheses:

- Mix of 10G, 40G & 100G interfaces with a tendency to have higher speed interfaces over time
- OOO XC config based 25:75 add/drop: pass-thru ratio
- Assumes that Network Capacity Trend equally increases demand on all network functions

Need to shift as much capacity as possible from routers down to XC and Photonic domain to sustain the IP traffic growth!

30 | Bell Labs Opt. Networks | January 2009

All Rights Reserved © Alcatel-Lucent 2009

Alcatel-Lucent

Fiber-based access networks: Passive Optical Networks (PON)

Optical access by Gigabit/s PON (GPON)

- Why optical fiber ?
 - Consumes 18x less energy per user than VDSL2
 - 2.5Gb/s downstream, 1.6Gb/s upstream
 - Sharing of this capacity among multiple users (time-division multiplexing)
- Distance to central-office can go up to 60km when amplifier-assisted, not a few 100s meters from set-top box to DSLAM.
 - Orange research team: around 820 central offices with DSLAM versus 48 edge nodes with GPON for 1.4M subscribers in North-West France (Brittany).

10GPON solutions recently proposed by system vendors

WDM dimension can also be exploited to increase capacity,

- And provide Peer to Peer connections, capacity on demand...

Summary

Data services are still fueling an exponential traffic growth

- Human-generated traffic; Machine-generated traffic
- Impact of cloud computing, of new applications, etc...

WDM has enabled traffic growth over the last 20 years

- 100-Gb/s research has come a long way over the last 4 years
- Bandwidth should no longer be taken for granted; large space for innovation

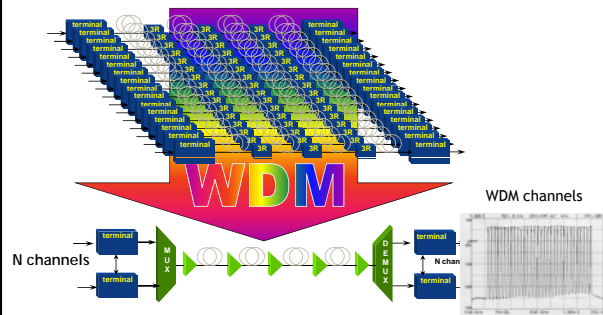
Optical transport networks are moving towards transparency, and reconfigurability, as an integral part of the future Internet

- ...w/ search of ideal Routing / Switching configuration for energy efficiency

www.alcatel-lucent.com
Thank you

Basic technologies:

Wavelength Division Multiplexing (WDM) of High Speed TDM channels



WDM = economical solution to reach multiterabit/s capacity

100G: The Drivers

A: Need for more capacity (service driven)

Request for higher bandwidth is mainly driven by the evolution of services (e.g.: IP-TV, HD-TV, VoD, gaming, file sharing, Peer-to-peer, grid computing, inter-connection of supercomputers, Datas-centers, Research projects)

B: Need for a higher rate at service interfaces (technology driven)

Technical issues lead to request interfaces at routers or computers w/ higher bitrate:

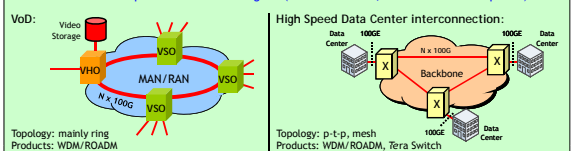
- unsatisfactory current Link Aggregation Groups (LAG):100GE interface seen as the solution
- Increase statistical multiplexing efficiency w/ higher rate interface => reduce cost/bit

C: Transport network optimization (cost driven)

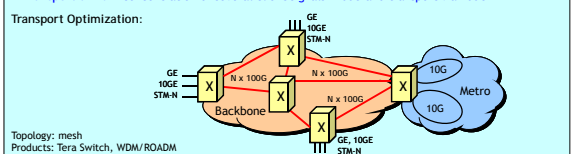
- Reduced number of wavelengths leads to reduced network complexity (OPEX)
- Reduction of CAPEX
 - Better fiber/lambda utilization
 - Reduced network cost by increasing statistical multiplexing efficiency
 - Future proof systems, scalable to manage the expected demand "explosion"

100G: Applications

Service driven: transport of 100GE client signals (between routers, video servers or computers)



Transport driven: concentration of several client signals <100G and transport via 100G



Basic technologies: Reconfigurable and dynamic Optical Networks

Reconfigurable Nodes for Flexible Operation

37 | Bell Labs Opt. Networks | January 2009
All Rights Reserved © Alcatel-Lucent 2009
Alcatel-Lucent

Challenges in Optical transport network management: flexibility and transparency

Minimise material cost (CAPEX)

- Avoid regeneration, Optical Add/Drop Multiplexers (OADMs); Optical Cross Connects (OXC), mutualize stock => tunable functions

Minimise operation cost (OPEX)

- Suppress on-site intervention, ease commissioning tunable functions to support protection and restoration, efficient allocation of the network resources

38 | Bell Labs Opt. Networks | January 2009
All Rights Reserved © Alcatel-Lucent 2009
Alcatel-Lucent

Network Transformation

Long-term vision of All-Packet Transport for All-IP services

- Seamless migration towards all packet transport & OTN networking (sub-lambda & transparent photonics)
- Maintaining transport values for tight TCO control

Key drivers

- Optical/ Packet Convergence
- Operational Efficiency
- High Availability, Survivability and Automation

Key drivers

- Data awareness
- Bandwidth optimization
- Automation

Key drivers

- Capacity
- Performance
- Reliability

past: SONET/SDH rings, DCS, WDM pt-to-pt

today: NG-SONET/SDH Packet Transport, OXC/ASON, md-ROADM, 40G

coming: All-Packet Transport & OTN (sub-lambda & Transparent Photonic Networking), 100G; T-MPLS/MPLS-TP, GMPLS/ASON; Full tunable md-ROADM (Zero-Touch Photonics), OTN (G.709 v2)

39 | Bell Labs Opt. Networks | January 2009
All Rights Reserved © Alcatel-Lucent 2009
Alcatel-Lucent

It's all about ... Transport Innovations

End to End Management System

Solve bandwidth bottlenecks
Lowest cost per transported bit/km

Taming the power challenge (green)
Carrier grade resilience and security

40 | Bell Labs Opt. Networks | January 2009
All Rights Reserved © Alcatel-Lucent 2009
Alcatel-Lucent

www.alcatel-lucent.com

Thank you