

## **Historic, archived document**

Do not assume content reflects current scientific knowledge, policies, or practices.



213



# Beckert's Bulbs

THE ORIGINAL BECKERT'S

## Beckert's Seed Store

101-103 Federal St., N. S., PITTSBURGH, PA.

RETURN POSTAGE GUARANTEED

*D. N. Shotmaker*

U. S. POSTAGE

**1½c. Paid**

Permit No. 52

Pittsburgh, Penna.

U.S. Dept. of Agriculture,  
Bureau of Plant Industry,  
Washington, D. C.  
W. W. Tracy, Sr.

# Autumn Bulbs for House and Garden Are Now Ready



Giant Trumpet Narcissus

**E**ARLY fall is the time to buy bulbs for winter blooming in the house and for early spring flowers in the garden. All these bulbs should make good root growth before freezing weather sets in and those planted in pots particularly should be given opportunity to form a mass of fine feeding roots before they are expected to bloom indoors.

The sooner these bulbs are planted either in pots or in the open ground, the better will be resulting bloom.

Not only that, but the bulbs are fresh now, and full of life and vigor; and in the case of Narcissus especially, the longer they are kept out of the ground the slower and feebler will be their response.

Early buyers also have the advantage of wider selection because sold-out varieties of a perishable crop like bulbs cannot be replaced. This is especially true of the daffodils, stocks of which are short because of the embargo on foreign importations.

For the same reason there are fewer varieties listed this year as American-grown stocks of Narcissus have not yet reached the point where full supplies of all sorts formerly sold can be obtained. At this time our stocks are complete; the bulbs are in fine condition; and we urge our friends to make their purchases at once.

## Giant Trumpet Daffodils

*Narcissus Pseudo-Narcissus*

These are among the most charming of our spring flowers, defying, in their earliness, the rough winds of April to grace our lawns and borders. Plant them in masses or have a few pans in your window-garden, but, by all means, *grow some*.

Daffodils may be treated as advised for hyacinths; they are not particular as to soil and will thrive for a number of years in ordinary soil. They are, with few exceptions, suitable for naturalizing and, while preferring partial shade, will thrive in full sun exposure. They are very desirable for pot culture, three to five bulbs in a 5 or 6-inch pot producing an attractive group. By planting one or more varieties in succession, such a display may be enjoyed throughout the first three months of the year.

If wanted by parcel post, add postage at your zone rate. First-Size Bulbs weigh 2 pounds per dozen; Mammoth Double-Crown Bulbs, 3 pounds per dozen.

### Yellow Trumpet Daffodils

Yellow or primrose trumpets and petals of the same colors.

<b>Emperor.</b> Large, rich yellow trumpet; prim-rose perianth; fine for cutting.	Each	Doz.	100
First-Size Bulbs.....	\$0 15	\$1 40	\$10 50
Mammoth Double-Crown Bulbs.....	15	1 65	12 00
<b>Golden Spur.</b> Native of the Netherlands. Large-lobed trumpets, rich, deep self-yellow; perianth large and spreading; early.	First-Size Bulbs.....	20	1 75 12 50

### IMPROVED VARIETIES

<b>King Alfred.</b> Uniform golden yellow; this variety stands unrivaled in size and beauty. Its round, fleshy petals, its immense, elegantly recurved and beautifully fluted trumpet, and its sturdy growth proclaim it the King of Daffodils.	Each	Doz.	100
First-Size Bulbs.....	\$0 30	\$3 00	\$25 00
Mammoth Double-Crown Bulbs.....	40	4 00	30 00

### White Trumpet Daffodils

<b>Madame de Graaff.</b> Perianth white; trumpet pale primrose, passing off white.	Each	Doz.	100
First-Size Bulbs.....	\$0 20	\$1 75	\$12 50

### Bicolor Trumpet Daffodils

The perianth white or light-colored, with yellow trumpet.

<b>Empress.</b> Very large and beautiful white perianth; rich yellow trumpet.	Each	Doz.	100
First-Size Bulbs.....	\$0 20	\$1 75	\$12 50
Mammoth Double-Crown Bulbs.....	25	2 25	16 00
<b>Giant Princeps.</b> Sulphur perianth and yellow trumpet; long and showy; early and forces finely.	First-Size Bulbs.....	15	1 40 10 50
Mammoth Double-Crown Bulbs.....	20	1 75	12 50

### BICOLOR TRUMPET DAFFODILS, continued

<b>Glory of Sassenheim.</b> This might be described as a much enlarged form of the old favorite Bicolor Victoria. The flowers are remarkably large and bold with white perianths and rich golden yellow trumpets. Glory of Sassenheim is a strong grower, splendid for both garden and forcing. Single-Nosed Bulbs.....	Each	Doz.	100
Double-Crown Bulbs.....	\$0 15	\$1 65	\$12 00
<b>Spring Glory.</b> Rare grace is combined with unusual size in this splendid new sort. The petals of the perianth are long and substantial, pure white in color, while the trumpet is deep yellow, very long, fluted and flaring at the brim.	20	2 00	15 00
Single-Nosed Bulbs.....	25	2 75	20 00
Double-Crown Bulbs.....	30	3 25	24 00
<b>Victoria.</b> Large, erect flowers; creamy white perianth and rich yellow trumpet; forces easily. The earliest of the Bicolors.	First-Size Bulbs.....	15	1 40 10 50
Mammoth Double-Crown Bulbs.....	20	1 75	12 50

## Short-Trumpet or Crown Daffodils

*Narcissus Incomparabilis*

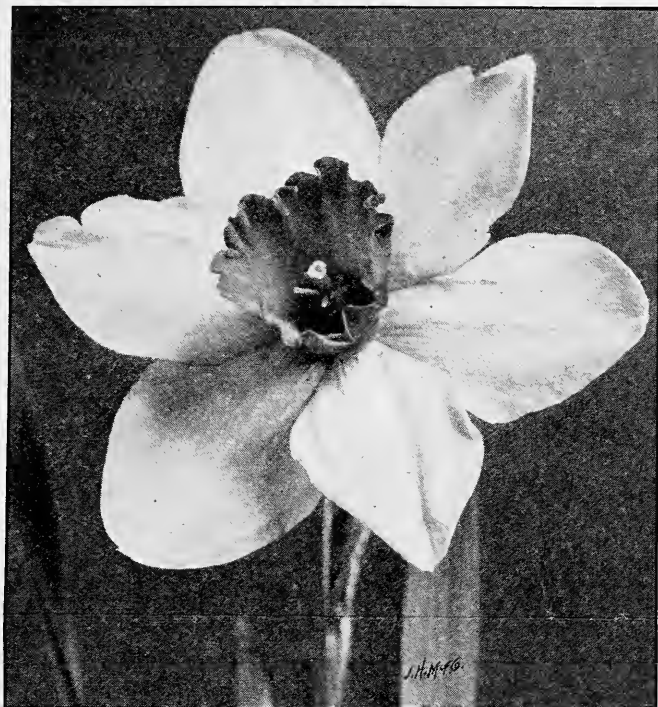
These are known as the Chalice-Cup Daffodils and, like all the Short-Trumpet varieties, they possess a certain elegance and airy grace which is not to be found in the Giant-Trumpet class. Most of them naturalize readily and some are excellent for forcing.

<b>Autocrat.</b> D.C. Broad perianth primrose-yellow; cup golden yellow. Very free-flowering and one of the best for forcing.	Each	Doz.	100
First-Size Bulbs.....	\$0 25	\$2 65	\$20 00
<b>Sir Watkin</b> (Giant Welsh Chalice Flower). Largest of the Incomparabilis varieties; fine for forcing; cup yellow; perianth primrose.	First-Size Bulbs.....	12	1 20 9 00
Double-Crown Bulbs.....	15	1 65	12 00

### Narcissus Barrii

Varieties of the Star Narcissus class. Very useful for pots, cutting or borders. This class is one of the best for naturalizing in front of shrubbery and will increase from year to year, making in time a very effective colony. Three to five bulbs may be planted in a 5-inch pot.

<b>Conspicuous.</b> Light yellow perianth, turning paler with age; short yellow cup with orange-scarlet edge. Very popular and a good grower; admirably suited for planting in mass.	Each	Doz.	100
First-Size Bulbs.....	\$0 12	\$1 25	\$9 00
<b>Rosella.</b> Creamy white perianth, orange cup edged scarlet; long, graceful stem.	20	2 25	16 50
<b>Seagull.</b> Broad, pure white perianth; pale lemon-yellow cup. Dainty but of good substance; it is excellent for all purposes.	25	2 75	20 00



Sir Watkin Narcissus

**NARCISSUS BARRII, continued**

<b>Southern Star.</b> Creamy white perianth, turning to white with age; wide, flat, lemon-yellow cup, shading to golden yellow at the edge.....	Each	Doz.	100
	\$0 20	\$2 25	\$16 50
<b>Winnifred.</b> Creamy white perianth, enormous, wide golden yellow cup, shading to orange at the edge.....	20	2 25	16 50

**Narcissus Leedsii**

Eucharis-Flowered or Fragrant Star Narcissi, all having white perianths.

	Each	Doz.	100
<b>Evangeline.</b> D.C. Broad, pure white perianth; large, lemon-yellow cup. Of exquisite form and unusual substance; it is a favorite for cutting.....	\$0 25	\$2 65	\$20 00
<b>Queen of the North.</b> D.C. Large, glistening, snowy white perianth; cup primrose-yellow with a narrow edge of creamy white. A conspicuous and beautiful Daffodil.....	30	3 40	25 00
<b>White Lady.</b> D.C. Broad white perianth; dainty cup, shaded soft lemon. Beautifully crinkled. A very pretty flower.....	25	2 65	20 00

**Poet's Narcissus (*Narcissus poeticus*)**

<b>Recurvus.</b> D.C. Purest white perianth, dark orange-red cup or eye. Splendid for mass planting; not a good forcer, but good flower variety for outside growing; very late.....	Each	Doz.	100
	\$0 10	\$1 00	\$8 00

**Double-Flowered Daffodils**

If to be sent by parcel post, add postage at your zone rate. One dozen bulbs weigh 4 pounds

<b>The Double Von Sion, or Golden Yellow Daffodil.</b> Fine for the garden and is forced in great quantities for cut-flowers.	Each	Doz.	100
First-Size Bulbs.....	\$0 15	\$1 50	\$11 00
Double-Crown Bulbs.....	20	2 00	15 00

**Poetaz Hybrid Daffodils**

An altogether new race of Narcissi, crosses between Polyanthus and Poeticus orantus, flowering in clusters; perfectly hardy.

<b>Elvira.</b> Pure white, with yellow cup; most popular. First-Size Bulbs.....	Each	Doz.	100
	\$0 12	\$1 25	\$8 00
Double-Crown Bulbs.....	15	1 75	12 00
<b>Laurens Koster.</b> Produces more flowers to the bulb than any other variety, often ten or more flowers in a single cluster. Perianth white, cup bright yellow.	20	2 00	14 00

**Nosegay Daffodils (*Narcissus polyanthus*)**

This class is particularly adapted to winter and early spring-flowering. They are not hardy unless well protected. Like the Chinese Narcissi they may be grown in bowls of water and pebbles or in baskets of sphagnum moss.

If to be sent by parcel post, add postage at your zone rate. One dozen bulbs weigh 2 pounds

	Each	Doz.	100
<b>Grand Soleil d'Or.</b> Early and showy golden perianth; brilliant orange cup.			
French Bulbs. Extra-Early.....	\$0 25	\$2 75	\$20 00

**PAPER-WHITE GRANDIFLORA**

Used in enormous quantities for early cut-flowers. Large heads of fragrant flowers. Readily grown in water or moss; very durable. *Crop short; order early.*

	Each	Doz.	100
First-Size Bulbs (13 cm. and up).....	\$0 10	\$1 15	\$8 00
Large Bulbs (14 cm. and up).....	12	1 25	9 00

**Jonquils (*Narcissus odorus* and *N. Jonquilla*)**

Deliciously sweet, bright yellow-flowered varieties. Very easily grown and should be planted in quantity for cutting.

<b>Campernelle Rugulosus Plenus.</b> A double-flowering form.....	Each	Doz.	100
	\$0 12	\$1 25	\$8 00

**FREESIA**

Very popular and widely cultivated early-flowering fall bulbs. They force readily and can easily be flowered by Christmas. Plant six to ten bulbs, according to size, in a 6-inch bulb-pot, covering 1 inch. Allow them to root in a cool place for about three weeks, then bring to the light. The flowers are very fragrant, gracefully branched, and last a long time.

Free by mail at catalogue price per dozen. For Monster and Mammoth bulbs, add postage at your zone rates—100 bulbs weigh one pound; First-Size bulbs, 100 bulbs weigh one-half pound.

<b>Purity.</b> Pure white. The largest-flowering and finest variety.	Each	Doz.	100	1,000
Jumbo Bulbs. (the largest grown).....	\$0 07	\$0 75	\$5 00	\$45 00
Mammoth Bulbs. $\frac{5}{8}$ to $\frac{3}{4}$ in. diam. ....	06	60	4 50	40 00
Select First-Size. $\frac{1}{2}$ to $\frac{5}{8}$ in. diam. ....	05	50	3 50	30 00

**Giant-Flowering Colored Freesias**

<b>General Pershing.</b> One of the finest of the new colored Freesias. Rosy lavender with yellow throat and lip. A strong grower.....	Each	Doz.	100	1,000
	\$0 06	\$0 60	\$4 50	\$40 00
<b>California.</b> Giant Golden Yellow.....	10	85	5 50	50 00
<b>Carmencita.</b> Beautiful light orange-salmon.....	10	85	5 50	50 00
<b>Carrie Budan</b> .....	10	85	5 50	50 00
<b>Ilena</b> .....	10	85	5 50	50 00
<b>Olivette</b> .....	10	85	5 50	50 00
<b>Rainbow Mixture</b> .....	07	70	5 00	45 00

**CALLA**

One of the most satisfactory and easily grown flowers for pot culture and forcing. The bulbs should be planted in rich soil, with the crown or top protruding just above the surface. They require an abundance of moisture, particularly during their flowering season, but after they have bloomed they should be allowed to dry off and remain dormant for several months. They thrive best in a warm temperature and moist atmosphere, with plenty of light.

If to be sent by parcel post, add postage at your zone rate. One mammoth bulb weighs 4 ounces; one dozen, 3 pounds. First-size bulbs and other Callas weigh 3 ounces each, 2 pounds per dozen.

<b>Æthiopica</b> (Lily-of-the-Nile). The old favorite large-flowering Calla Lily.	Each	Doz.	100
Medium Bulbs.....	\$0 25	\$2 50	\$20 00
Mammoth Bulbs.....	40	4 00	30 00
Monster Bulbs.....	50	5 00	40 00
<b>Elliottiana</b> (The Golden Calla). A beautiful variety from South Africa, with a broad, trumpet-like tube of a very rich pure yellow; leaves spotted white. Large bulbs.	40	4 00	30 00
<b>Godefroyana</b> (The Godfrey Everblooming Calla). A stronger grower and more constant bloomer than Æthiopica. The plants are dwarf and compact with dark green foliage and pure white flowers.	30	3 00	22 50
First-Size Bulbs. 3-in. cir. and up.....			

**Small White Pebbles**

For growing Paper-White and Chinese Sacred Narcissus bulbs and French Roman Hyacinths in bowls of water. Qt. 15 cts., 4 qts. 50 cts. Postage 10 cts. per quart.

# HARDY LILIES

We especially recommend deep planting, say, from 6 to 8 inches deep; varieties like *Speciosums* require at least 8 inches, with an ample amount of sand beneath the bulb to insure proper drainage. Cover the beds with leaves or litter during winter. Lilies thrive well in borders, formal gardens, or shrubbery, and usually flower at a time when the shrubbery has ceased blooming. The following varieties have proved to be sorts that may be planted in the fall or, with the exception of *Lilium candidum*, in the spring with excellent results. We often receive orders for *Lilium candidum* for spring delivery. They arrive from France in September, and must be planted by November 1.

Where the ground is liable to freeze before late Lilies arrive, it should be mulched with leaves or manure.

Lilies marked with a star (\*) will not be ready until the latter part of October or November.

If Lily bulbs are to be sent by parcel post, add postage at your zone rate. Bulbs 11 x 13 and 12 x 14 inches weigh 8 ounces; 9 x 10 and 9 x 11 inches, 6 ounces; 7 x 9 inches, 4 ounces; all other varieties, 2 ounces.

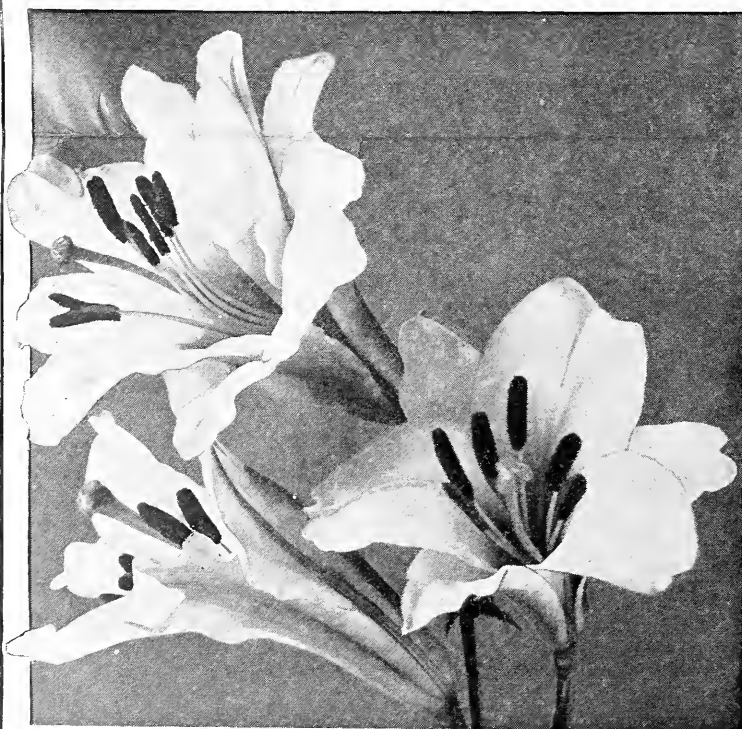
## LILIUM CANDIDUM (Madonna Lily)

Choice Northern-Grown. Arrive in August or September

The favorite Lily of the old-fashioned garden, produces strong, stiff stems, studded with pure, glistening white flowers, that enliven the perennial flower-garden and contrast beautifully with the green shrubbery of June, frequently growing 4½ feet high.

Plant some bulbs during September and October and enjoy a big crop of flowers next June; or pot up, store in coldframe, and force for early winter in the greenhouse or conservatory. Our bulbs of this splendid Lily are grown in northern France, and are of the true thick-petaled variety, which is much superior in habit and flowering qualities to that of the cheap, loose, southern-grown bulbs.

	Each	Doz.	100
First-Size Bulbs	\$0 30	\$3 00	\$20 00
Mammoth-Size Bulbs	40	4 00	30 00
Jumbo Bulbs	50	5 00	40 00
* <i>Auratum</i> (Gold-banded Lily). Ivory-white, with central band of yellow and numerous purple spots. 9 x 11-in. circumference	45	4 50	35 00
11 x 13-in., Mammoth Bulbs	60	6 00	45 00
* <i>Auratum pictum</i> . Grand pure white, spotted crimson, without the yellow band. 9 x 10-in. circumference	75	7 50	60 00
* <i>Auratum platyphyllum</i> ( <i>macranthum</i> ). A giant Lily. Similar in color to <i>Auratum</i> , but much larger and with fewer spots. 9 x 10-in. circumference	65	6 50	50 00
* <i>Speciosum album</i> . Pure white, with green band in the center of each petal; exquisitely dainty and beautiful; very fragrant. 8 x 10 in. circumference	60	6 00	45 00
11 x 13-in., Mammoth Bulbs	65	6 50	50 00
* <i>Speciosum magnificum</i> . Flowers larger than any of the other <i>Speciosums</i> . Rose, heavily spotted with rich crimson. 9 x 11-in. circumference	45	4 50	35 00
11 x 13-in., Mammoth Bulbs	60	6 00	45 00



Lilium Regale, the Regal Lily

* <i>Speciosum melpomene</i> . Large, rich carmine flowers, heavily spotted blood-red. 9 x 11 in. circumference	Each \$0 45	Doz. \$4 50	100 \$35 00
11 x 13-in., Mammoth Bulbs	60	6 00	45 00
<i>Speciosum rubrum</i> or <i>roseum</i> . White, shaded with deep rose, and spotted red. Magnificent; freeblooming. 9 x 11-in. circumference	45	4 50	35 00
11 x 13-in., Mammoth Bulbs	60	6 00	45 00
* <i>Batemanniae</i> . Blooms in August and September; very handsome glowing apricot-red flower	25	2 50	20 00
<i>Hansonii</i> . Flowers bright golden yellow, spotted purple, borne in clusters	75	7 50	60 00
* <i>Henryi</i> . Large panicles of orange-yellow flowers, banded with green; robust and long-lived	75	7 50	60 00
<i>Krameri</i> . Pure blush-pink, fragrant and beautiful trumpet-shaped flowers; 3 feet; blooms in August	40	4 00	30 00
* <i>Tigrinum fl.-pl.</i> Double orange flowers, spotted black. Mammoth Bulbs	25	2 50	17 00
* <i>Tigrinum splendens</i> . Rich scarlet with dark spots. Mammoth Bulbs	25	2 50	17 00
<i>Regale</i> (The Regal Lily). Introduced from China. Plant very vigorous. Stems attain a height of 2½ to 4 feet, bearing from three to nine or more large trumpet-shaped white flowers, flushed with yellow internally, and externally shaded with deep brown-pink, which, shining through the petals, gives them a soft, pearly pink gleam. Entirely hardy, easily forced, and is perfect as a pot plant. 5 to 6 in.	50	5 00	
6 to 7 in.	75	7 50	

## Lily Bulbs for Indoor Growing For Greenhouse Forcing

<i>Harrisii</i> (Bermuda Easter Lily). Ready in August. Large, pure white, trumpet-shaped flowers. 7 x 9-in. circumference	Each \$0 50	Doz. \$5 00	100 \$40 00
9 x 11-in. circumference	90	9 00	70 00

## JAPANESE LILIES

We offer two varieties of Japanese Lilies which are largely grown for January to Easter flowering: *L. longiflorum formosum*, which usually arrives in this country late in August, and *L. longiflorum giganteum*, which usually arrives in October or November.

<i>Longiflorum formosum</i> . Black stems; blooms early. Often used instead of the Bermuda as an Easter Lily. Ready in September. 7 x 9-in. circumference	Each \$0 50	Doz. \$5 00	100 \$40 00
9 x 10-in. circumference	75	7 50	60 00
10 x 12-in. circumference	90	9 00	70 00
<i>Longiflorum giganteum</i> . Stems black; later than the preceding; flowers of more substance. Ready in September. 7 x 9-in. circumference	40	4 00	30 00
8 x 9-in. circumference	45	4 50	35 00
8 x 10-in. circumference	50	5 00	40 00
9 x 10-in. circumference	55	5 50	45 00
10 x 12-in. circumference	75	7 50	60 00

## LILY-OF-THE-VALLEY

For forcing, plant twelve pips in a 6-inch pot, keeping the crowns above the soil; place in a temperature of about 80 degrees, covering the pots with moss; keep them moist continually. They should flower in three to four weeks from time of planting. Ready in November.

Mailing weight, bundle of 25 pips, 20 ounces

**Perfection Brand Pips.** New Crop, November delivery. \$2.00 for 25, \$7.00 per 100, \$16.00 for 250, \$30.00 for 500, \$55.00 per 1,000.  
**Cold-Storage Pips.** \$15.00 for 250, \$27.50 for 500, \$50.00 per 1,000.  
**Large, Strong Clumps.** (Mailing Weight, 2 lbs. per clump.) For planting outdoors by the middle of April. Perfectly hardy; produce a profusion of flowers in spring. Partial shade is necessary. 50 cts. each, \$5.00 per doz.

## OXALIS

Valuable for winter flowering; elegant for pots and baskets. Six to ten bulbs may be planted in a pot.

All prices postpaid

<i>Bermuda Buttercup</i> . Very good for winter flowering, being free and continuous; pure bright yellow flowers	Each \$0 04	Doz. \$0 30	100 \$2 25
<i>Bowiei</i> . Brilliant carmine-rose	04	35	2 50
<i>Grand Duchess</i> . Dwarf; of great beauty. Flowers large and thrown well above foliage. Lavender, Pink, White, and Yellow	04	30	2 25
<i>Mixed Varieties</i>		25	2 00

## IRIS (Fleur-de-Lis)

During May, the Irises rule supreme in the hardy border where they thrive in soil too poor to grow potatoes. They are of the greatest hardiness and easiest culture and should be freely planted. The Irises are the "Flags" of the old-fashioned gardens. They are most effective when used as edging for shrubby or garden border. The clumps increase in size from year to year producing larger and lovelier flowers each succeeding season.

Mailing weight, 4 ounces each root

### German Iris (*Iris germanica*)

These are the easiest to grow and most generally satisfactory of all Irises, comprising the best of the *Iris Germanica* sorts and many other forms and hybrids. They come in all sorts of attractive colors, and, by planting a proper selection of varieties, may be had in bloom from early May to mid-June. All are perfectly hardy and robust in growth. The best time to plant them out is during late September or October.

	Each	Doz.	100
<b>Candelabra.</b> Standards silvery mauve; falls purple.	\$0 20	\$2 00	\$15 00
<b>Comte de St. Clair.</b> Standards white; falls violet with white margin.	15	1 50	10 50
<b>Eldorado.</b> Standards bronze shaded yellow; falls violet-purple, touched with bronze-yellow.	25	2 50	20 00
<b>Florentina.</b> A very fine tall blue.	15	1 50	10 50
<b>Her Majesty.</b> Standards rose-pink, falls bright crimson. Rare and altogether desirable. 2½ ft.	25	2 50	20 00
<b>Honorabilis.</b> Standards golden; falls mahogany-brown.	15	1 50	10 50
<b>Juanita.</b> Clear blue, fragrant flowers, tall grower.	25	2 50	20 00
<b>Iris King.</b> Standards lemon-yellow; falls rich crimson, bordered with gold. Tall.	35	3 50	25 00
<b>Lohengrin.</b> The fine large flowers are a uniform, soft lavender-rose like the Cattleya orchid. 2½ ft.	20	2 00	15 00
<b>Mme. Chereau.</b> White, edge of petal fringed blue. A fine cut flower.	15	1 50	10 50
<b>Pallida speciosa.</b> Very large, deep purple.	20	2 00	15 00
<b>Queen of May.</b> Soft lilac-rose or lavender-pink. The nearest to pink in Iris. Extra fine.	20	2 00	15 00
<b>Shakespeare.</b> Standards bronzy yellow; falls maroon.	15	1 50	10 50
<b>Stormcloud.</b> Flowers of the largest size; standards slaty lilac, shaded bronze; falls violet-blue, veined with white and purple at base. 2½ ft.	20	2 00	15 00

## Hedge Plants

Ready for delivery September 15 to October 15. Plant out as soon as received. Hedge plants should be set close together in a single row for best results. Set about 4 inches apart for a low hedge; 8 to 10 inches apart for a high hedge; and 1½ to 2 feet apart for specimen bushes. Prune back top and roots before planting.

### California Privet (*Ligustrum ovalifolium*)

This popular hedge plant thrives everywhere except in very dry or very shady spots. It is a rapid, vigorous grower requiring and benefiting by frequent trimming. The glossy dark green leaves remain on until midwinter and new leaves appear very early in the spring so that Privet is almost an evergreen. It can be pruned into any shape desired and may be kept as low as 12 inches or grown as high as 10 feet.

In very severe winters it will sometimes freeze down to the ground, coming up again from the roots the following season. To guard against damage from heavy snows in winter, it is best to trim Privet hedges to a pointed or rounded top which will shed the snow and, incidentally, allow a greater amount of sunlight to reach the lower branches.

We offer strong, well-grown stock in the following sizes.

	25	50	100
18 to 24 inches.	\$2 00	\$3 75	\$6 50

### Japanese Barberry (*Berberis Thunbergii*)

Where a dense barrier or hedge 4 to 5 feet high is desired there is nothing better than Japanese Barberry. It is perfectly hardy, even in the most rigorous climate, and will thrive on comparatively poor soil and in partial shade. It does not grow as rapidly as the Privet but makes vigorous, bushy plants with neat foliage which turns bronzy red in the fall, and bright red berries that remain on the plants all winter. Pruning is not necessary or desirable. Give plenty of water until the plants are well established.

	25	50	100
18 to 24 inches.	\$9 00	\$15 00	\$25 00

NOTE.—The above prices are for shipment by express at customer's expense. We make no charge for boxing or packing.

## PEONIES

### READY IN OCTOBER

Those who are fond of Peonies will be delighted with these modern marvels which the skill of the hybridizer has given us. They will thrive in almost any situation, but prefer a sunny spot and medium heavy, but well-drained and fertilized soil. Plant them 3 to 4 feet apart and with the crown of the root 4 or 5 inches below the surface level. Give extra attention to cultivation the first two years after planting and, if you want the finest specimen plants, pinch off all buds which appear before the third season. Plenty of moisture is required during the blooming period. We offer twelve of the finest standard varieties in cultivation.

Mailing weight, 16 ounces each root

	Each	Doz.	100
<b>Albatre.</b> White, flecked carmine, collar waxy white; very fragrant. Opens like a rose-bud. Late.	\$0 75	\$7 50	\$54 00
<b>Boule de Neige.</b> Milk-white, sulphur center, prominently flecked crimson. Excellent for cutting. Midseason.	45	4 50	31 50
<b>Edulis superba.</b> Bright clear pink. The famous "Decoration Day" Peony, blooming very early and profusely.	55	5 50	39 00
<b>Felix Crousse.</b> Uniform, rich ruby-red; large, globular flowers. Blooms in late mid-season.	1 00	10 00	69 00
<b>Festiva Maxima.</b> The most popular white Peony. Immense flowers of purest white, with clear carmine spots. Early.	45	4 50	31 50
<b>Karl Rosenfield.</b> Red, dark velvety crimson, clear and brilliant without a trace of purple. Immense, globular. Most excellent bloomer. Midseason.	1 50	16 00	114 00
<b>Mme. Ducel.</b> Bomb type. Both guards and bomb a solid color of silvery lilac-pink. Holds its form and color to the end. Mid-season.	75	7 50	54 00
<b>Mme. Calot.</b> Vigorous and extremely free-flowering. Large double flowers of the rose type, light pink shaded with deeper pink. The most fragrant of all Peonies. Extra-early.	50	4 75	35 00
<b>Mme. de Verneville.</b> Bomb type. One of the most charming varieties on the market. Large pure white with four red flakes on central petals. Early.	45	4 50	31 50
<b>Officialis rubra.</b> Earliest of all Peonies. Bright red.	85	8 75	61 50

PEONY ASSORTMENT.—One strong division of each of the ten splendid herbaceous Peonies described above, a complete collection, for only \$6.00.



Border of Peonies

## MUSHROOM SPAWN

**Pure Culture Brick Spawn.** Pure and vigorous. Comes in white, cream, light brown and brown. Specify which color is wanted when ordering. One brick will spawn 8 square feet of bed. Mailing weight per brick 1½ pounds. Single brick 30 cts., 5 bricks \$1.25, 10 bricks \$2.30, 25 bricks \$5.60, 50 bricks \$10.50. Write for prices on case lots.

**Bottle Spawn.** Prepared in the laboratories as needed, by the direct method, in sealed quart bottles, insuring extra vigor. One bottle is equivalent to 6 to 8 bricks. Allow two to three weeks for delivery from time order is placed. Shipment by express at purchaser's expense, direct from laboratories. Specify color wanted. Per bottle \$1.25; in case lots of one dozen bottles each, \$10.00 per case.

Pamphlet on Mushroom Culture free.

# BECKERT'S SEEDS ARE FULL OF VIGOR AND VITALITY

## Flower Seeds for the Greenhouse

### Antirrhinum (Snapdragon) HHP

Now grown as extensively under glass as in the garden. Snapdragons bloom to perfection indoors and require no more care than Geraniums. With only ordinary treatment and temperature, they will flower in from four to six months from the time the seed is sown. About 80 per cent of the seedlings come true to color.

#### NEW TALL LARGE-FLOWERING FORCING SNAPDRAGONS

- 2130 **Philadelphia Pink.** Pure light rose-pink. The result of several years' careful selection and pure-line breeding, and considered to be one of the finest pink Snapdragons in existence. Our seed comes direct from the originator. 2½ to 3 ft. Small pkt. 50 cts., large pkt. \$1.00.  
2156 **Beckert's Giant Oakledge Favorite.** Salmon-pink; unsurpassed for cutting. Pkt. 50 cts.  
2158 **Beckert's Giant Oakledge Queen.** Deep pink with white throat and tube. Pkt. 50 cts.

#### TALL LARGE-FLOWERING SNAPDRAGONS

These grow to a height of 2 to 2½ feet, with strong stems and well-filled spikes of large flowers. They are the standard varieties for cutting.

- 2125 **Giant White.** Pure white. 2139 **Giant Scarlet.** Vivid scarlet.  
2127 **Giant Silver-Pink.** Clear shell-pink. 2143 **Giant Garnet.** Dark, velvety crimson.  
2133 **Nelrose.** Coral, white throat. 2147 **Giant Yellow.** Golden yellow.  
2135 **Giant Rose.** Deep, rich rose. 2151 **Giant Striped.** Odd colors.  
Each of the above, pkt. 10 cts., ¼oz. 30 cts., oz. \$1  
2153 **Giant Mixed.** All desirable shades. Pkt. 10 cts., ¼oz. 25 cts., oz. 80 cts.

### Asparagus TP

Graceful plants extensively grown for their dainty, emerald-green foliage, which is used in floral designs and bouquets.

- 2221 **Plumosus nanus.** The florist's "asparagus fern." Beautiful sprays of fernlike foliage. Pkt. 25 cts., 100 seeds \$1.00.  
2223 **Sprengeri.** The best variety for pots or baskets and fine for cutting. Pkt. 15 cts., 100 seeds 50 cts.

### Cyclamen TP

A favorite pot-plant for winter and spring flowering, blooming in eight to ten months from sowing. The seed is fine and must be carefully handled, but few plants will so well repay a little extra care. Cyclamen blooms freely and for a long period, furnishing the most graceful and dainty of all cut-flowers. Our strains come from famous European Cyclamen breeders and are the finest in existence.

#### Giant English Exhibition Varieties

- 2921 **White with Red Eye.** Very large and fine.  
2923 **Rose.** Clear, deep rose-pink; distinct.  
2925 **Mauve.** Delicate mauve with carmine eye.  
2936 **Phoenix.** Cherry-red; very fine.  
2940 **Princess May.** Enormous; rose with purple base.  
2946 **Salmon King.** Beautiful, clear salmon-pink.  
2952 **Vulcan.** The deepest red Cyclamen; blood-red.  
2954 **White Swan.** Pure white; of the largest size.

Each, pkt. (25 seeds) 75 cts., 50 seeds \$1.35, 100 seeds \$2.50

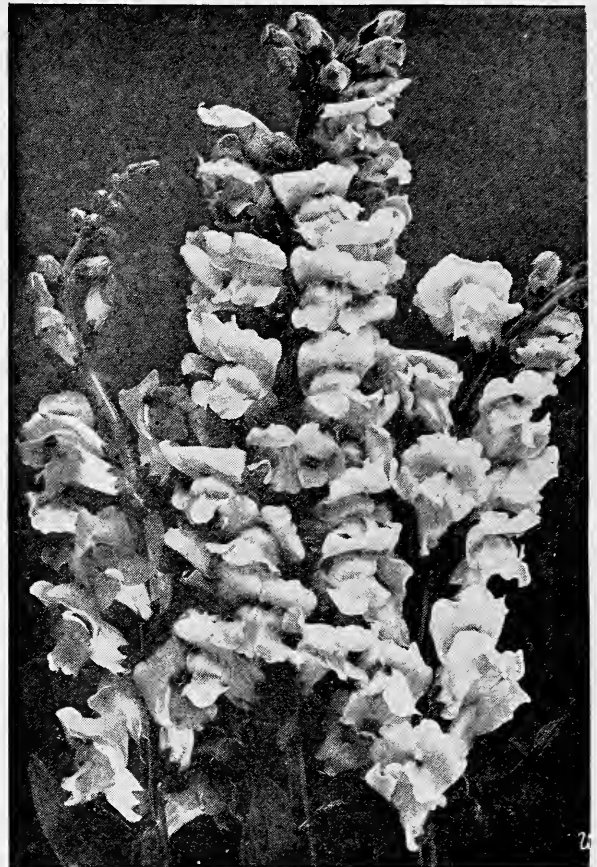
The following are some of the finest of the recent introductions:

- 2930 **Cherry Ripe.** Almost a pure scarlet; the brightest red in cultivation; very free-flowering.  
2932 **Eileen Low.** A lovely shade of Rose Du Barri pink. Its great attraction lies in the distinct white margin and blush-white crest on each petal.  
2934 **Mrs. Buckston.** Bright salmon-cerise and beautifully frilled.  
2938 **Pink Pearl.** The most free-flowering of all, with lovely pale salmon flowers and prettily tessellated foliage.  
2944 **St. George.** The "Silver-leaved Cyclamen." Pale salmon-pink flowers and beautifully marbled foliage.  
2948 **Sunset.** Bright orange-salmon; very distinct.  
2950 **Victoria.** Glorious red flowers of the largest size, on unusually strong stems.  
Each, pkt. \$1.00, 50 seeds \$1.85, 100 seeds \$3.50  
2956 **Giant Superb Mixed.** Including all of the best. Pkt. (25 seeds) 60 cts., 50 seeds \$1.10, 100 seeds \$2.00.  
2958 **Bush Hill Pioneer.** A rare type with curiously feathered or crested flowers. Pkt. \$1.00, 50 seeds \$1.85, 100 seeds \$3.50.

#### Choice Free-Flowering German Strains

- 2960 **Christmas Red.** Glowing deep red.  
2961 **Glory of Wandsbek.** Reddish salmon.  
2962 **Pearl of Zehlendorf.** Rich salmon-pink.  
2963 **Rose of Marienthal.** Rose-pink with carmine eye.

Each, pkt. (25 seeds) 85 cts., 50 seeds \$1.60, 100 seeds \$3.00



Beckert's Giant Oakledge Snapdragons

### Begonia TP

The Begonias are ever popular and not at all difficult to grow although the seed is fine and must be carefully handled. The Semperflorens and Erfordia varieties are excellent for bedding and make nice pot-plants for decorative purposes. The Gracilis varieties bloom later but make particularly fine pot-plants on account of their bushy growth.

- 2511 **Erfordia.** Handsome dark foliage and rosy carmine flowers. 1 foot high. Pkt. 35 cts.  
2512 **Erfordia grandiflora superba.** Compact plants densely covered with delicate pink flowers. Glossy green foliage. Pkt. 35 cts.  
2515 **Semperflorens, Salmon Queen.** A most attractive new variety with large, salmon-colored blossoms and dark foliage. Pkt. 35 cts.  
2517 **Semperflorens, Vernon.** A grand old favorite, often grown as a Christmas-flowering pot-plant and fine for bedding. Branching habit; dark green foliage, shaded bronzy red; carmine-scarlet flowers. Pkt. 15 cts.  
2518 **Semperflorens, Dwarf Vernon.** Forms small, round, compact plants which are literally covered with brilliant red flowers; foliage deep, brownish red. Pkt. 30 cts.  
2521 **Gracilis luminosa.** Fiery, dark scarlet flowers; satiny brown foliage; fine for winter flowering. Pkt. 35 cts.  
2523 **Gracilis, Prima Donna.** Large, handsome plants covered with bright rose-pink flowers; shining green foliage. Pkt. 50 cts.  
2525 **Gracilis, White Pearl.** A fine companion to Prima Donna; flowers pure snowy white; free-blooming. Pkt. 50 cts.  
2528 **Beckert's Superb Mixture.** A special blend of all colors in bedding Begonias. Pkt. 25 cts.

Please refer to our General Spring Catalogue for a complete list of the flower and vegetable seeds which we can supply

BECKERT'S SEED STORE, 101-103 Federal Street, N. S., Pittsburgh, Pa.



# BECKERT'S SEEDS PRODUCE VIGOROUS WINTER CROPS

FLOWER SEEDS FOR THE GREENHOUSE, continued

## Beckert's Winter-Flowering Spencer Sweet Peas

This recently developed class of Spencers is now grown almost exclusively by florists for winter bloom and is also useful for outdoor planting in the fall. The varieties we offer have been carefully selected from the finest sorts introduced to date. The flowers are large and gracefully waved, generally produced in threes and fours on long, stiff stems.

	Pkt.	½oz.	Oz.
4904 <b>Snowflake.</b> The most dependable pure white. White-seeded.....	\$0 10	\$0 45	\$0 80
4909 <b>Mrs. Spanolin.</b> Large, black-seeded white.....	10	40	75
4915 <b>Songbird.</b> Dainty blush-pink.....	10	35	65
4918 <b>Spring Maid.</b> Rose-pink on cream ground.....	10	35	65
4923 <b>Mrs. A. A. Skaach.</b> Clear, lively shell-pink.....	10	45	80
4926 <b>Melody.</b> Light rose-pink.....	10	35	65
4932 <b>Rose Queen.</b> Glorious, deep rose-pink. Extra-fine.....	10	40	75
4935 <b>Rose Charm.</b> New. Bright carmine-rose.....	15	60	1 00
4949 <b>Mrs. Kerr.</b> New. The best rich salmon.....	25	1 10	2 00
4954 <b>Morning Star.</b> Standard orange; wings rosy.....	10	45	75
4958 <b>Illumination.</b> Glowing salmon-cerise. Fine.....	10	45	80
4961 <b>Fire King.</b> Dazzling cerise-scarlet.....	10	45	80
4968 <b>Aviator.</b> Bright crimson. The best red.....	10	45	80
4973 <b>Lavender King.</b> Clear, deep lavender.....	10	45	80
4977 <b>Blue Bird.</b> The finest pure mid-blue.....	10	45	80
4979 <b>Heatherbell.</b> Rich mauve; extra-large.....	10	40	75
4984 <b>Yarrowa.</b> Deep rose and cream. A favorite.....	10	35	65
4986 <b>Columbia.</b> The best strain of "pink and white".....	10	40	75
4995 <b>Finest Mixed.</b> .....	¼lb. \$1.60, lb. \$6.00..	10	20 40



### Calendula (Pot Marigold) HA

Very showy, quick-growing plants of the simplest requirements; easily forced and steadily increasing in popularity as a winter cut-flower. 1½ ft.

- 2576 **Lemon Queen.** Of brightest sulphur-yellow. One of the most double and always very showy. Forcing strain. Pkt. 10 cts., oz. 40 cts., ¼lb. \$1.25.
- 2580 **Orange King. Special Forcing Strain.** Fine for cutting; bearing wonderful double flowers of the deepest orange-red. Pkt. 15 cts., ¼oz. 50 cts., oz. \$1.65.
- 2581 **Prince of Orange.** Large, double, yellow flowers, attractively striped with orange-brown, with dark centers. Pkt. 10 cts., oz. 25 cts.

#### NEW FORCING CALENDULA

- 2574 **Ball's Orange.** This special forcing strain of orange Calendula was bred by one of the country's foremost cut-flower growers. Large, extra-double flowers; bright orange. Originator's seed. Pkt. 50 cts., ¼oz. \$2.00, oz. \$6.00.

### Chrysanthemum

- 2819 **Frutescens grandiflora** (Marguerite, or Paris Daisy). **GP.** White or lemon-yellow with yellow eye. May be had in bloom the year around but is especially grown for winter flowers. 3 feet. Pkt. 10 cts., ¼oz. 30 cts., oz. \$1.

### Cineraria TP

Very distinct and ornamental house plants, bearing magnificent heads of velvety flowers, in white, all shades of blue from very pale to dark blue, pink, carmine, and crimson, with bicolors of crimson and white, and blue and white.

- 2830 **Hybrida grandiflora.** A prize strain; large-flowering and unsurpassed for richness of color. 1½ feet tall. Pkt. 50 cts.
- 2832 **Hybrida grandiflora, Semi-dwarf.** Plants about 1 foot tall; compact in growth and bearing large, superbly colored flowers in profusion. Pkt. 50 cts.
- 2834 **Hybrida grandiflora, Matador.** A marvelous, new French variety, bearing large, bright scarlet flowers. Pkt. 50 cts.
- 2837 **Hybrida stellata** (Star Cineraria). Star-shaped flowers with narrow petals, in many pleasing colors. Highly decorative. 1½ feet high. Pkt. 50 cts.

### Grevillea

- 3397 **Robusta** (Silk Oak). **TP.** A very handsome pot-plant of upright growth, with graceful, fernlike foliage. Young plants, from 2 to 5 feet high, are much prized as table and window decorations. Culture same as geraniums. Pkt. 10 cts., ¼oz. 25 cts.

### Mignonette HA

A general favorite, now extensively grown in greenhouses from seed sown early in the fall. Mignonette prefers a medium light, loamy soil, with only moderate temperature and watering. As it does not transplant well, the seed should be sown in the pots or benches where it is wanted to bloom.

- 3806 **Defiance.** Long spikes of grayish white florets; one of the best for cutting. Pkt. 10 cts., ¼oz. 30 cts.
- 3808 **Giant Machet.** An extra-select, mammoth-flowering strain. Florets reddish green. Pkt. 15 cts., ¼oz. 40 cts.
- 3812 **Giant Crimson, or Goliath.** Large, uniform trusses of deep red flowers; fine for forcing. Pkt. 15 cts., ¼oz. 40 cts.
- 3814 **Golden Machet.** Massive spikes of golden yellow blossoms. Pkt. 15 cts., ¼oz. 40 cts.
- 3816 **Giant White Pearl.** Long, broad trusses of white blossoms. The finest white variety. Pkt. 20 cts.
- 3818 **Giant Mixed.** A fine blend. Pkt. 10 cts., ¼oz. 30 cts.

### Schizanthus (Butterfly Flower) HHA

A plant of rare beauty and elegance; ideal for pots or cutting. Buds will open in water and the sprays last for a week. Plants from September-sown seed bloom in February or March. Make succession plantings; use ordinary soil; treatment same as for Cineraria.

- 4536 **Monarch.** The finest large-flowering strain in existence, with a wide range of marvelous colors—from almost pure white through delicate shades of pink to bright rose and crimson, exquisite mauve and lavender tints, and many beautifully blotched and penciled with darker shades, including bronze and chocolate. Pkt. 50 cts.
- 4534 **Excelsior.** Mammoth flowers with attractive markings on a white, rose, or buff ground-color. Fine for greenhouse culture. Pkt. 50 cts.
- 4539 **Large-flowered Hybrids.** Dainty flowers in a good variety of colors; easy to grow. Pkt. 15 cts.

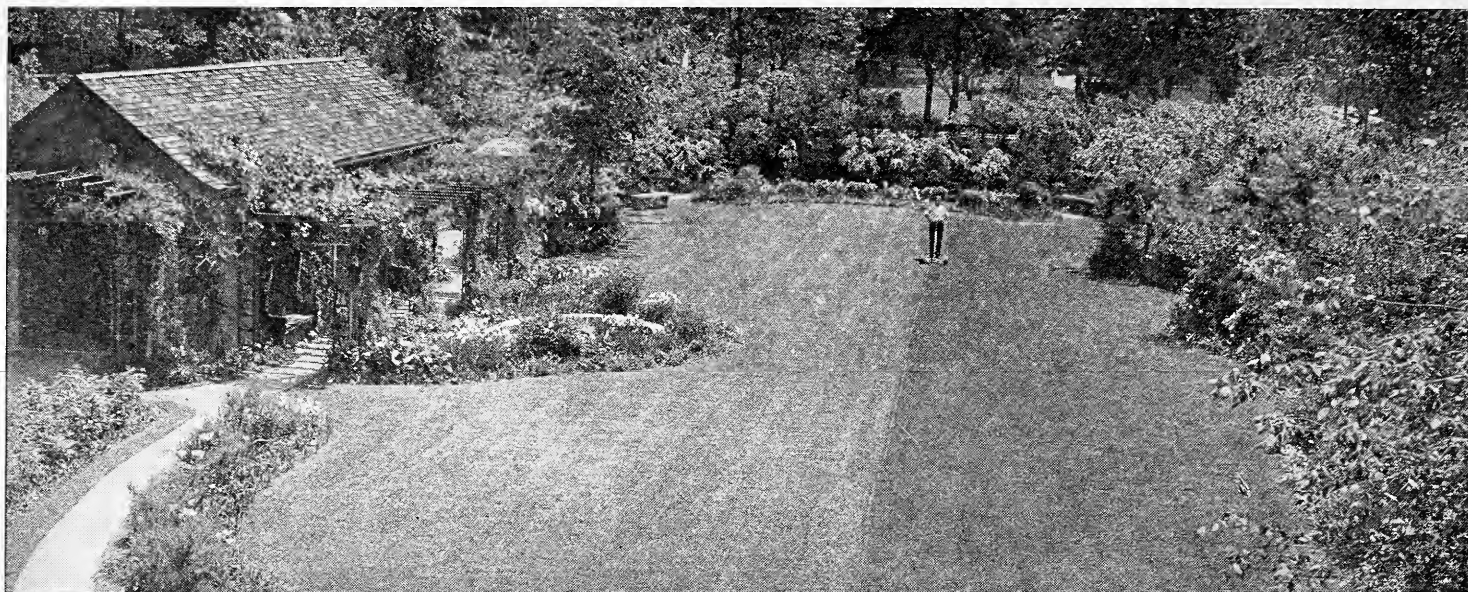
### Giant Winter-Flowering Stocks HHA

The Giant Winter-flowering or Nice Stocks are splendid subjects for greenhouse or pot-culture, producing their large, fragrant blossoms even more abundantly indoors than in the garden. Vigorous and rapid grower, flowering in three to four months from fall-sown seed.

- 4632 **Mont Blanc.** Snowy white.
- 4633 **Monte Carlo.** Clear canary yellow.
- 4634 **Almond Blossom.** White, suffused carmine.
- 4636 **Beauty of Nice.** Exquisite shell-pink.
- 4638 **Abundance.** Brilliant carmine-rose.
- 4641 **Queen Alexandra.** Clear rosy lilac.
- 4643 **Cote d'Azure.** Light violet-blue.
- 4645 **Summer Night.** Violet.

Each, pkt. 15 cts., ½oz. 75 cts., ¼oz. \$1.35, oz. \$5.00

BECKERT'S SEED STORE, 101-103 Federal Street, N. S., Pittsburgh, Pa.



## YOUR LAWN—SOME PRACTICAL ADVICE

The best two times to start a lawn or pasture are early spring and early autumn—the seasons of abundant moisture, warm days, and cool nights. Spring sowings should be made as soon as the ground can be prepared to receive the seed, while fall sowings should be made during September.

**Good Soil and Proper Drainage** are absolutely necessary to produce a fine lawn. For best results, there should be no less than a foot of good surface soil—preferably a heavy loam. Where it is necessary to grade the surface, all subsoil should be removed and replaced with good earth. Unless the soil is sufficiently rich, the use of fertilizer is important. Apply sheep manure, or some other concentrated, weedless soil-builder, and rake it well into the smoothed and firmed surface. A heavy application of manure is particularly advisable on light or sandy soils where, otherwise, the grass is liable to burn out in hot, dry weather.

**Prepare the Seed-Bed Thoroughly.** Rake or harrow the surface fine and even. After sowing the seed, rake again lightly and firm the soil with a lawn roller. Do not attempt to dig, rake, or roll a lawn when the ground is wet. **On Banks and Terraces**, where the seed is liable to be washed off by rains before it has sprouted, a quick catch can be secured by mixing the seed with moist earth about one week before sowing; then, at the expiration of that time, when the seed (with the earth) is sown, much of it is ready to sprout.

**The First Cutting** should not be made until the young grass is 3 to 4 inches high and even then it should not be cut too short as close cropping is injurious to a new lawn. Mow the lawn, thereafter, at intervals of about ten days and rake off the clippings. Grass sown during September will, under favorable conditions, grow sufficiently to necessitate one cutting before frost, in which case the clippings should be left on the lawn to serve as a mulch.

**Frequent Rollings** are beneficial after a lawn is once well established, especially in early spring after the winter frosts have drawn up the roots of the grass.

**Sow Good Seed.** There are many grades of lawn seed sold. Needless to say, it pays to use nothing but the best obtainable. No one kind of grass will make a good lawn. The changeable moods of our climate, the widely varying conditions of soil and moisture-supply require a combination of many different grasses adapted to many different conditions. The subject of lawns has been a long and thorough study with us. **Beckert's Lawn Grass Mixtures** are carefully composed of the finest domestic and imported turf grasses, free from chaff and weed seeds, and strong in vitality. You can depend on them to produce lasting lawns of the finest texture and most attractive appearance.

### BECKERT'S EVERGREEN LAWN SEED

We offer in our Evergreen Mixture a well-balanced blend of the finest and most enduring grasses we know—the result of years of study and trial. It is our masterpiece. Tested and proved, we can recommend it with the highest confidence for permanent and satisfactory results under even the most trying conditions. Its ingredients are the highest grade of cleaned seeds only. This lawn seed is now sold only by weight. Use one pound to 350 square feet, 125 pounds to the acre. **Package 30 cts., lb. 60 cts., 2 lbs. \$1.10, 5 lbs. \$2.50, 10 lbs. \$4.85, 25 lbs. \$11.50, 50 lbs. \$22.00, 100 lbs. \$42.00.**

(Parcel post or express prepaid in the United States within a radius of 1,500 miles from Pittsburgh.)

### SHADY-NOOK LAWN MIXTURE

A mixture of grasses particularly adapted for sowing in shady places where the ordinary lawn grasses do not thrive. It will produce a bright, green lawn under trees and in the shade of buildings and shrubbery where bare, unsightly spots so often appear. **Package 35 cts., lb. 65 cts., 2 lbs. \$1.20, 5 lbs. \$2.75, 10 lbs. \$5.25, 25 lbs. \$12.50, 50 lbs. \$23.50, 100 lbs. \$45.00.**

### PUTTING-GREEN MIXTURE

The finest, hardy, low-growing grasses are contained in this mixture, which will produce a close and lasting putting-green turf. **Lb. 90 cts., 5 lbs. \$4.25, 10 lbs. \$8.00, 25 lbs. \$19.25, 50 lbs. \$36.75, 100 lbs. \$70.00, postage extra.** (Prices subject to change.)

### FAIR-GREEN MIXTURE

The best selection of grasses for an even, tough, permanent turf. Gives general satisfaction but, where a lot of seeding is to be done, we prefer to supply a special formula, according to the particular requirements of the soil. **Lb. 50 cts., 5 lbs. \$2.25, 10 lbs. \$4.25, 25 lbs. \$10.00, 50 lbs. \$19.00, 100 lbs. \$36.00, postage extra.**

**NOTE: ALL LAWN SEED PRICES ARE SUBJECT TO CHANGE**

## BECKERT'S SEED STORE

101-103 Federal Street

N. S., PITTSBURGH, PA.



## Pot-Grown Strawberry Plants

Summer and Fall, 1926

Fifty or more of a variety will be supplied at the hundred rate. Plant our Pot-Grown Strawberries during the summer or early fall months and "save a year."

Following will be found brief descriptions of the various varieties that we are in position to supply.

	Doz.	100
<b>Barrymore.</b> Midseason to late.....	\$1 00	\$7 00
<b>Brandywine.</b> Midseason.....	1 00	7 00
<b>Bushel Basket.</b> Midseason.....	1 25	8 00
<b>Bun Special.</b> Early to midseason.....	1 25	8 00
<b>Californian.</b> .....	1 25	8 00
<b>Charles I.</b> Extra early.....	1 25	8 00
<b>Chesapeake.</b> Midseason to late.....	1 25	8 00
<b>Collins.</b> Long season variety, ripening with the mid-season varieties.....	1 25	8 00
<b>Delicious.</b> Medium late to late.....	1 50	10 00
<b>Edmund Wilson.</b> Midseason.....	1 50	10 00
<b>Early Jersey Giant.</b> Earliest.....	1 25	8 00
<b>Eaton.</b> Midseason.....	1 25	8 00
<b>Gandy.</b> Late.....	1 00	7 00
<b>Glen Mary.</b> Midseason.....	1 00	7 00
<b>Howard No. 17.</b> Second early.....	1 00	7 00
<b>Hundred Dollar.</b> Midseason.....	1 00	7 00
<b>Joe.</b> .....	1 00	7 00
<b>John H. Cook.</b> Second early.....	1 50	10 00
<b>Judith (De Lue's).</b> Midseason.....	1 25	3 00
<b>Jumbo.</b> Midseason.....	1 50	10 00
<b>Lupton.</b> Late.....	1 00	7 00
<b>Marshall.</b> Midseason.....	1 00	7 00
<b>McKinley.</b> Midseason.....	1 00	7 00
<b>New York.</b> Midseason.....	1 00	7 00
<b>Nick Ohmer.</b> Midseason to late.....	1 00	7 00
<b>Pearl.</b> Very late.....	1 50	10 00
<b>Premier.</b> Extra early.....	1 00	7 00
<b>Royal Sovereign.</b> For forcing under glass.....	2 00	12 00
<b>Senator Dunlap.</b> Early to midseason.....	1 00	7 00
<b>Sharpless.</b> Late.....	1 00	7 00
<b>Stevens' Late Champion.</b> Late.....	1 00	7 00
<b>Success.</b> Early.....	1 00	7 00
<b>William Belt.</b> All-season.....	1 00	7 00

### Collection of Van Fleet Hybrids

We will send a dozen each (36 in all) of the three wonderful Van Fleet Hybrids, Early Jersey Giant, John H. Cook and Edmund Wilson (all pot-grown) for \$4.00, or twenty-five of each for \$7.50.

### Special Home Garden Collection

Here is a collection of five sorts, bearing from very early to very late. Every one a quantity bearer of quality fruit:

- 20 **Premier.** One of the best of all the earlys.
- 20 **William Belt.** A dandy to follow Premier.
- 20 **Joe.** None finer for midseason.
- 20 **Gandy.** A good all round late.
- 20 **Champion Everbearing.** For continuous crops till frost.

**Special:** A total of 100 pot-grown plants, a retail catalogue value of \$9.16, for only \$7.50. This is absolutely the greatest value we have ever offered.

## Fall-Bearing or Everbearing Strawberries

Upon moist, fertile land our pot-grown plants of the fall-bearing varieties produce sweet ripe berries in a few weeks from the time they are planted.

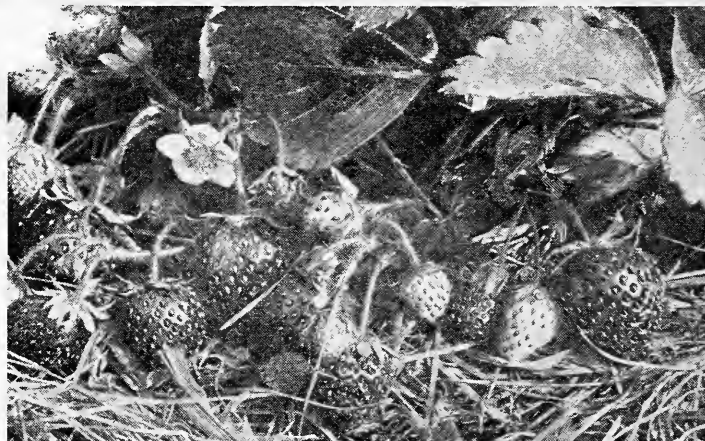
	Doz.	100
<b>All Season.</b> Bears all the time from early June in this latitude until freezing weather.....	\$4 00	\$25 00
<b>Champion Everbearing.</b> This is one of the newer varieties that promises to be decidedly prolific.....	1 50	10 00
<b>Mastodon.</b> Bears continuously from June until freezing weather large, decidedly attractive berries of superb flavor.....	4 00	25 00
<b>Progressive.</b> Bears two large crops a year; the first in June, and a second crop throughout the fall. Fruit of good quality but rather small.....	1 25	8 00
<b>Superb.</b> Produces very attractive flame colored berries both summer and autumn.....	1 25	8 00

### SPECIAL EVERBEARING COLLECTION

Offering a long bearing season:

24 <b>Champion Everbearing</b> .....	\$3 00
24 <b>Progressive</b> .....	2 50
12 <b>Mastodon</b> .....	4 00

A total value of \$9.50 for \$8.00



Fall or Everbearing Strawberries

## STIM-U-PLANT

A highly concentrated, soluble plant-food in tablet form, convenient to use and wonderfully effective in increasing size and productivity and heightening the color of flowers. For plants in 6-inch pots or smaller, insert half a tablet in the soil every ten days. For bulbs growing in water, a quarter of a tablet is sufficient for the ordinary bowl, dropped in the water at the time the buds are forming. In boxes of 10 tablets 15 cts., 30 tablets 25 cts., 100 tablets 75 cts., 1,000 tablets \$3.50.