
pure::variants Variability Exchange Language Manual

Parametric Technology GmbH

Version 6.0.7.685 for pure::variants 6.0

Copyright © 2003-2024 Parametric Technology GmbH

2024

Table of Contents

1. Introduction	1
1.1. What is pure::variants - Variability Exchange Language?	1
1.2. About this manual	2
1.3. Installation	2
2. Using the Variability Exchange Language Feature	2
2.1. Starting pure::variants	2
2.2. Importing a Variability Exchange Language Description	2
2.3. Exporting a Variability Exchange Language Description	4
2.4. Importing a Variability Exchange Language Configuration	4
2.5. Creating a Variability Exchange Language Configuration	6

1. Introduction

1.1. What is pure::variants - Variability Exchange Language?

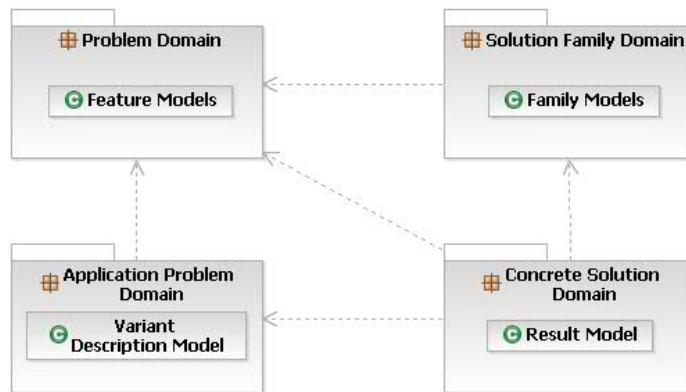
The pure::variants - Variability Exchange Language (VEL) feature enables the user to exchange variability information as description and as configuration with any engineering tool in a standardized way. For this a Variability Exchange Language document can be imported and generated by pure::variants. The VEL description document contains all relevant variation points of an asset of the engineering tool and the VEL configuration document contains the configuration of these variation points based on selected features from Feature Models in pure::variants.

For further information about the Variability Exchange Language please visit <http://www.variability-exchange-language.org/>.

Figure 1, “Overview of family-based software development with pure::variants” shows the four cornerstone activities of software product line development and the models used in pure::variants as the basis for these activities.

When building the infrastructure for your Product Line, the problem domain is represented using Feature Models. The solution domain, i.e. the concrete design and implementation of the software family, is implemented as Family Models.

The two model types used for Application Engineering, i.e. the creation of product variants / configurations, are complementary to the models described above. The Variant Description Model (VDM), containing the selected feature set and associated values, represents a single problem from the problem domain. The Variant Result Model describes a single concrete solution drawn from the solution family.

Figure 1. Overview of family-based software development with pure::variants

pure::variants manages the knowledge captured in these models and provides tool support for co-operation between the different roles within a family-based software development process:

- The *domain analyst* uses the pure::variants Feature Model editor to build and maintain the problem domain model containing the commonalities and variabilities in the given domain.
- The *domain designer* uses assets of other engineering tools to describe the variable family and to connect it via appropriate rules to the Feature Models.
- The *application analyst* uses a Variant Description Model to explore the problem domain and to express the problems to be solved in terms of selected features and additional configuration information. This information is used to derive a Variant Result Model from the assets of the other engineering tool.
- The *application developer* generates a member of the solution (feature selections and variant specific assets) from the Variant Result Model by using the transformation engine.

1.2. About this manual

The reader is expected to have basic knowledge about and experiences with pure::variants. The pure::variants manual is available in online help as well as in printable PDF format [here](#).

1.3. Installation

Please consult section **pure::variants Connectors** in the **pure::variants Setup Guide** for detailed information on how to install the connector (menu **Help** -> **Help Contents** and then **pure::variants Setup Guide** -> **pure::variants Connectors**).

2. Using the Variability Exchange Language Feature

2.1. Starting pure::variants

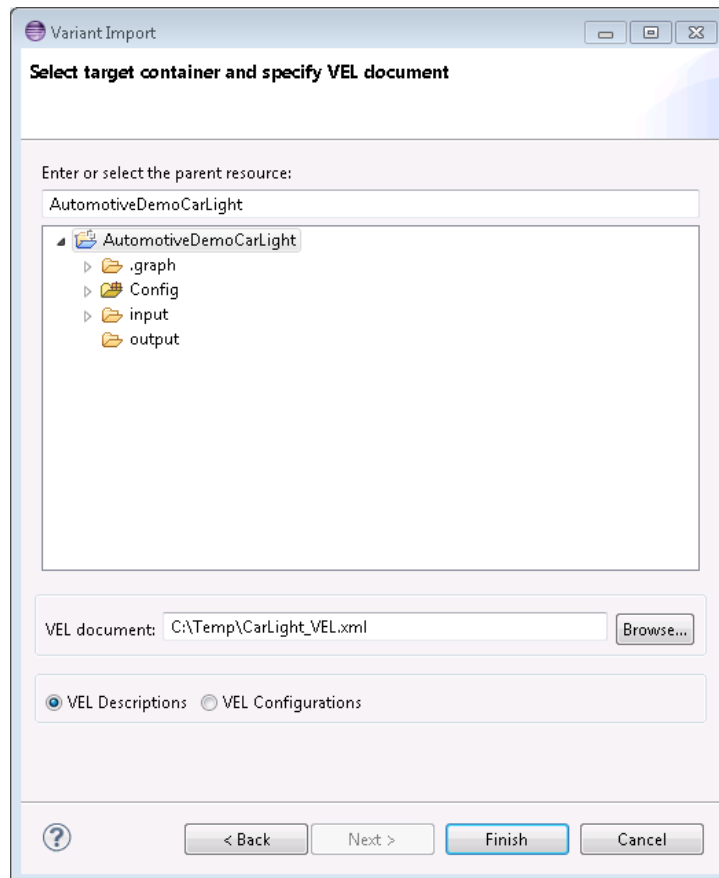
Depending on the installation method used either start the pure::variants-enabled Eclipse or under Windows select the **pure::variants** item from the **program** menu.

If the **Variant Management** perspective is not already activated, do so by selecting it from **Open Perspective** -> **Other...** in the **Window** menu.

2.2. Importing a Variability Exchange Language Description

The import of a VEL description is started by selecting the **Import...** action either in the context menu of the pure::variants Project view or with **Import...** menu in the File menu. Select **Variant Models or Projects** in the opened wizard and press Next. On the following page select **Import from VEL document**. After pressing Next a page opens, where the source VEL document and the target folder of the family model to be created is selected.

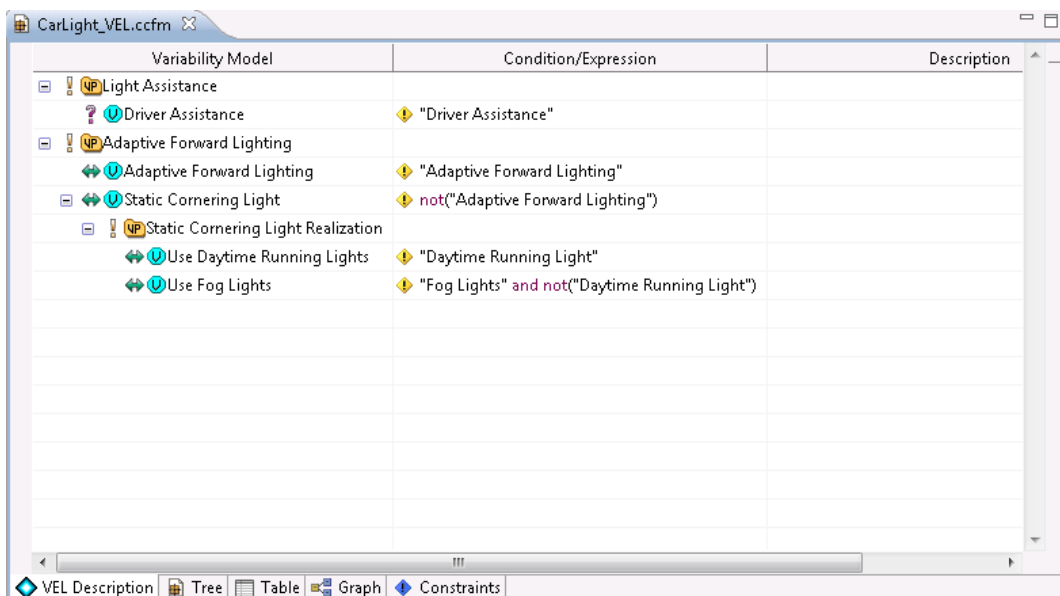
Figure 2. Import VEL Description Details Page



After pressing **Finish** the import is performed and one family model per variability exchange model is generated. The resulting models will be created in the selected target folder.

The Family Model editor for this type of models contains a special viewer. The **VEL Description** viewer shows in a compact way the variation points, the variations and their conditions by hiding all unnecessary information from the user. The full model can be seen in the **Tree** tab.

Figure 3. Import VEL Description Result



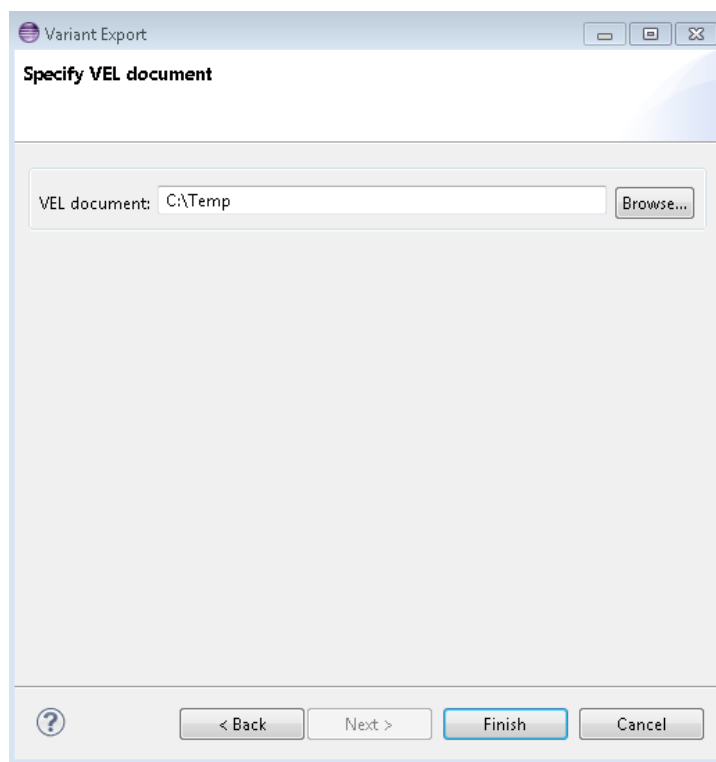
The **VEL Description** viewer supports the user by creating, changing, or deleting of conditions and expressions at a variation.

2.3. Exporting a Variability Exchange Language Description

An imported VEL description family model can be changed within pure::variants. In order to be able to share a changed VEL description pure::variants supports the export of VEL description models to an VEL description XML file.

The export of a VEL description is started by selecting the **Export...** action either in the context menu of the pure::variants Project view or with **Export...** menu in the File menu. Select **Variant Resources** in the opened wizard and press Next. On the next page select the model, which shall be exported, and switch to the next page. Select **Export to VEL document** and press Next.

Figure 4. Export VEL Description



The last page of the wizard allows the user to select a target folder, in which the generated VEL description document will be stored.

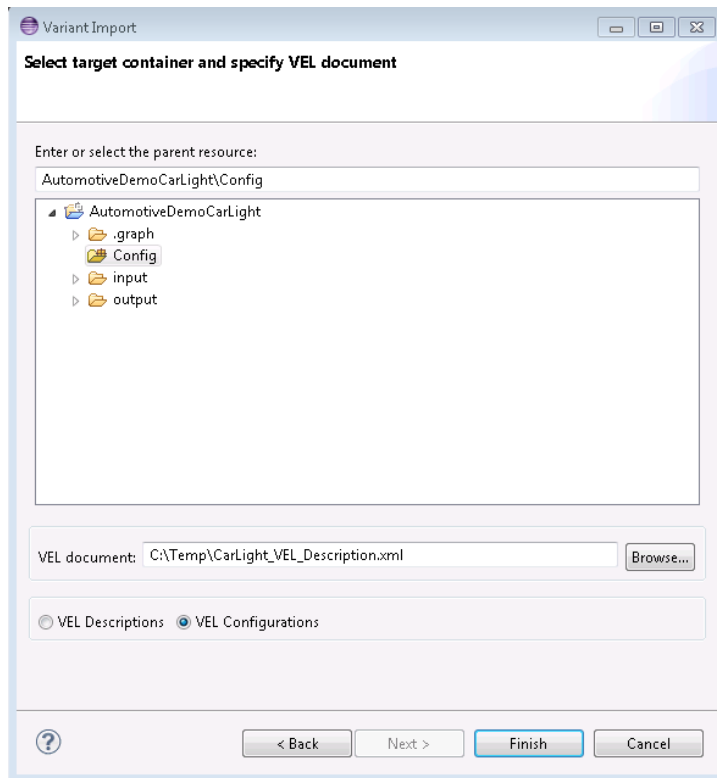
2.4. Importing a Variability Exchange Language Configuration

The import of a VEL configuration is started by selecting the **Import...** action either in the context menu of the pure::variants Project view or with **Import...** menu in the File menu. Select **Variant Models or Projects** in the opened wizard and press Next. On the following page select **Import from VEL document**. After pressing Next a page opens, where the source VEL document and the target folder of the variant description model to be created is selected. The target folder has to be a configuration space folder.

Note

Before a VEL configuration can be imported the corresponding VEL description has to be imported to pure::variants. All resulting family models need to be added as input models to the target configuration space.

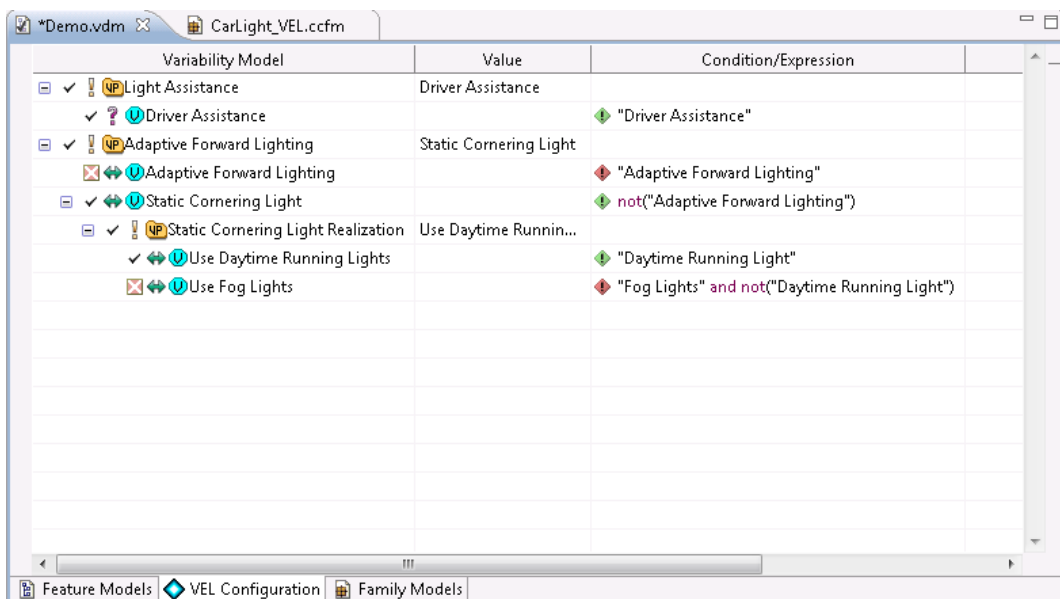
Figure 5. Import VEL Configuration Details Page



After pressing **Finish** the import is performed and one variant description model is generated within the target configuration space. Each variation, which is selected in the imported VEL configuration will be user selected in the resulting variant description model.

The Variant Model editor for variant description models containing at least one VEL description family model contains a special viewer. The **VEL Configuration** viewer shows in a compact way the variation points, the variations and their conditions by hiding all unnecessary information from the user. The full model can be seen in the **Family Models** tab. Besides the selections the tab shows the resulting value of the variation points and give indications on which condition is evaluated to true by a small green icon. Conditions with a red icon evaluate to false.

Figure 6. Import VEL Description Result



The **VEL Configuration** viewer supports the user by selecting variation(s) for a variation point.

2.5. Creating a Variability Exchange Language Configuration

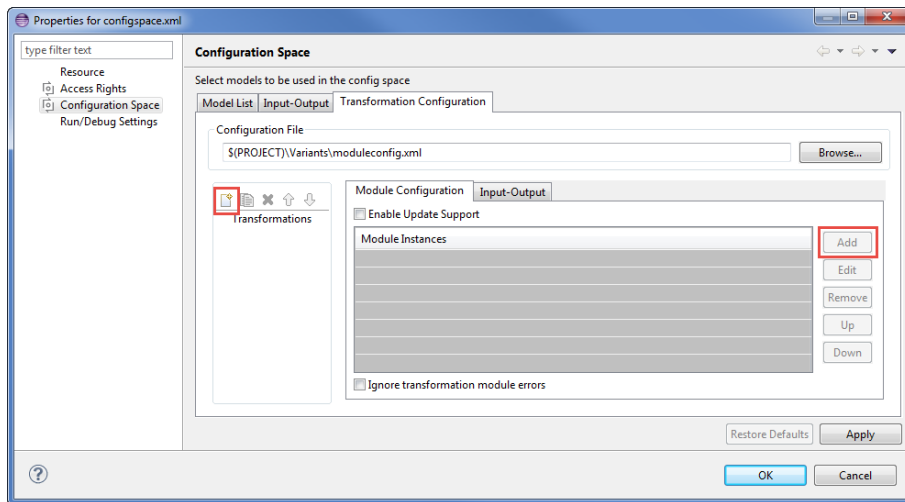
To create a VEL configuration document a transformation module is used. First a *Transformation Configuration* has to be created. To create a Transformation Configuration click on Transformation button in the tool bar (see [Figure 7, “Transform model”](#)) and choose **Open Transformation Config Dialog...**

Figure 7. Transform model



The configuration space property dialog opens and the Transformation Configuration tab is shown. Next step is to add a new Module Configuration, by clicking the marked tool bar item (see [Figure 8, “Transformation Configuration”](#)). Now add a new Module to the Module Configuration, using the **Add** button.

Figure 8. Transformation Configuration



A new dialog comes up, choose **VEL Configuration Writer** module and enter a name. This transformation module provides one parameter. On the next page the output path for the generated VEL configuration document can be given. It is allowed to use pure::variants path variables here.

After finishing the dialogs the transformation can simply be used by clicking on the Transformation button (see [Figure 7, “Transform model”](#)) in the tool bar and choosing the transformation in the pull down menu.