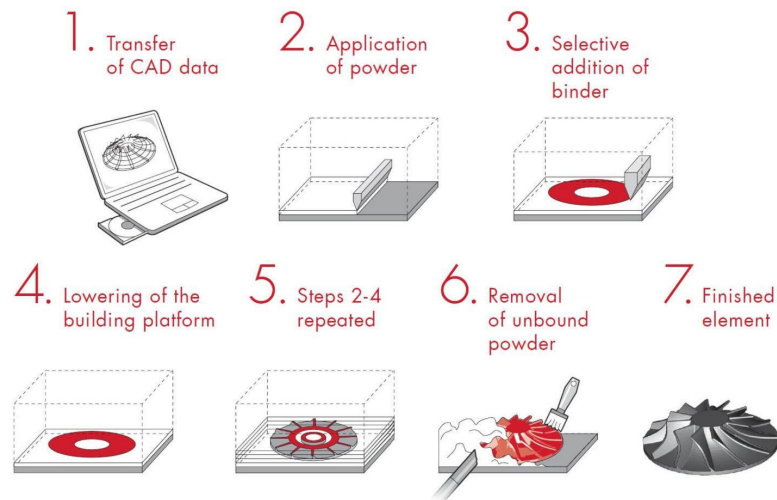


# Binder Jet Printing (gluer)

Vincent Wolfe

## Printing Process:

- Works with metal, sand, ceramics.
- Applies a layer of powder, then a print-head deposits a binding agent to required areas. The powder bed is heated / cured, then the bed is lowered slightly for the next layer.
- Once fully printed, further treatment / curing / post-processing is needed to achieve mechanical properties and finishes. (Parts can be low-density).
- Powder unused in the printing process can be reclaimed.
- Doesn't need printed supports, as the uncured powder acts as support. This saves time, and means you can have more complex shapes.



## Usage:

- Already fairly low-heat (compared to printing using lasers), which prevents thermal stress / warping.
- Because it can produce complex metal parts, if post-processing speeds up / improves Binder Jetting could be used more in aerospace & automotive parts production.
- Typically used for producing metal parts and sand molds.

<https://www.wevolver.com/article/binder-jetting>

<https://www.makerverse.com/resources/3d-printing/binder-jetting-3d-printing-explained/>