

Local-Level Data on Income and Poverty for BC from 2006 Census

October 2008



This is a joint project from the Provincial Health Services Authority, Health Officers' Council of British Columbia and Vancouver Coastal Health



Raymond Fang
*Senior Statistical Scientist
Population & Public Health
Provincial Health Services Authority*

Darryl Quantz
*Policy Consultant
Population Health
Vancouver Coastal Health*

Prepared for

John Millar
*Executive Director
Population Health Surveillance & Disease
Control Planning*

Lydia Drasic
*Director
Provincial Primary Health Care & Population
Health Strategic Planning
Provincial Health Services Authority*

Paul Martiquet
*Chair
Health Officers' Council of British Columbia*

Acknowledgement:

*We are grateful to Statistics Canada for
releasing the 2006 Census British Columbia
(table)-2007, Statistics Canada Catalogue no
92-591-XWE, Ottawa and Catalogue 97-563-
XCB2006031*

*Provincial Health Services Authority
700-1380 Burrard Street
Vancouver, BC
V6Z 2H3 Canada
www.phsa.ca*

Concepts and Definitions

Economic family - Refers to a group of two or more persons who live in the same dwelling and are related to each other by blood, marriage, common-law or adoption

Family Income – Total income for an economic family

Median Family Income – income value that 50% of families have family income higher and other 50% of families have family income lower than this value

Average Family Income – average value of income of all economic families

Income Inequality – the difference between average family income and median family income with a zero value indicating income is homogeneously distributed, a positive value indicating prosperity concentrates in the high income groups and a negative value indicating opposite a direction

Poverty Line – also known as low-income cutoffs (*LICOs*): income thresholds, determined by analyzing family expenditure data, below which families will devote a larger share of income to the necessities of food, shelter and clothing than the average family would. To reflect differences in the costs of necessities among different community and family sizes, *LICOs* are defined for five categories of community size and seven of family size

After-Tax Poverty Measure– final family poverty status taking into account the added spending power that a family gets from receiving government transfers or its reduced spending power after paying taxes depending on families' income level. All poverty measures in this presentation are based on after-tax financial power

Small Area – areas are considered as small area if the populations are less than 40 persons and thus are suppressed in order to protect confidentiality. Small area does not necessarily small in size of area

Indian Reserve – Indian reserves are usually counted as separate Census subdivisions. However, Statistics Canada does not calculate poverty rates for these areas and thus no poverty data are available for these areas

A National Comparison of Income Levels and Rates of Low Income Families

Name	Population in Private Household in Poverty (after-tax)	Children in Poverty in Private Household (after-tax)	Median Family Income for Economic Families	Average Family Income for Economic Families	Income Inequality for Economic Families
CANADA	11.4	13.1	\$66,343	\$82,323	\$15,980
Newfoundland & Labrador	10.1 ⁽⁶⁾	13.2 ⁽⁷⁾	\$51,791 ⁽¹⁰⁾	\$63,041 ⁽¹⁰⁾	\$11,250 ⁽⁶⁾
Prince Edward Island	7.0 ⁽¹⁾	7.9 ⁽¹⁾	\$56,207 ⁽⁸⁾	\$64,139 ⁽⁸⁾	\$7,932 ⁽¹⁾
Nova Scotia	9.6 ⁽⁴⁾	11.5 ⁽³⁾	\$57,078 ⁽⁷⁾	\$67,672 ⁽⁷⁾	\$10,594 ⁽³⁾
New Brunswick	9.3 ⁽³⁾	11.6 ⁽⁴⁾	\$54,520 ⁽⁹⁾	\$63,913 ⁽⁹⁾	\$9,393 ⁽²⁾
Quebec	12.5 ⁽⁹⁾	12.5 ⁽⁵⁾	\$59,734 ⁽⁶⁾	\$71,838 ⁽⁵⁾	\$12,104 ⁽⁷⁾
Ontario	11.1 ⁽⁷⁾	13.7 ⁽⁸⁾	\$72,734 ⁽²⁾	\$90,526 ⁽²⁾	\$17,792 ⁽⁹⁾
Manitoba	12.2 ⁽⁸⁾	15.9 ⁽¹⁰⁾	\$60,754 ⁽⁴⁾	\$72,240 ⁽⁴⁾	\$11,486 ⁽⁵⁾
Saskatchewan	9.9 ⁽⁵⁾	12.5 ⁽⁵⁾	\$59,998 ⁽⁵⁾	\$71,339 ⁽⁶⁾	\$11,341 ⁽⁴⁾
Alberta	9.1 ⁽²⁾	10.3 ⁽²⁾	\$76,526 ⁽¹⁾	\$98,240 ⁽¹⁾	\$21,714 ⁽¹⁰⁾
BC	13.1⁽¹⁰⁾	14.9⁽⁹⁾	\$65,787⁽³⁾	\$80,511⁽³⁾	\$14,724⁽⁸⁾

■ Top three worse provinces; ■ Top three best provinces

British Columbia – BC has the highest percent of population in poverty and secondary highest percent of children in poverty in Canada. BC has both the third highest median family income and average family income in the nation but income inequity measured by the difference between the two family income values in BC is the third worst after Alberta and Ontario. In other words, BC is the third worst province with more income pouring into the high-income groups.

Income Level and Percentages of Population in Low Income Families (Major Areas)

Name	Population in Private Household in Poverty (after-tax)	Children in Poverty in Private Household (after-tax)	Median Family Income for Economic Families	Average Family Income for Economic Families	Income Inequality for Economic Families
CANADA	11.4	13.1	\$66,343	\$82,323	\$15,980
BC	13.1	14.9	\$65,787	\$80,511	\$14,724
Abbotsford	9.6	11.7	\$64,089	\$75,934	\$11,845
Burnaby	20.6	24.4	\$61,369	\$74,413	\$13,044
Campbell River	11.1	13.5	\$63,792	\$70,259	\$6,467
Chilliwack	9.1	10.7	\$61,587	\$71,617	\$10,030
Comox	5.4	4.5	\$67,867	\$74,093	\$6,226
Coquitlam	15.8	18.4	\$70,805	\$82,934	\$12,129
Courtenay	14.7	16.1	\$52,841	\$62,215	\$9,374
Cumberland	8.3	6.2	\$53,880	\$56,471	\$2,591
Delta	9.3	11.2	\$84,553	\$94,486	\$9,933
Duncan	17.3	30.1	\$46,538	\$50,415	\$3,877
Hope	11.1	16.5	\$51,752	\$61,524	\$9,772
Kamloops	10.4	11.3	\$67,434	\$76,518	\$9,084
Kelowna	10.7	12.0	\$61,263	\$76,163	\$14,900
Kitimat	8.7	12.1	\$85,871	\$87,674	\$1,803
Langley	6.9	7.9	\$80,058	\$93,461	\$13,403
Lions Bay	12.5	21.3	\$108,151	\$122,156	\$14,005
Maple Ridge	11.0	13.5	\$74,253	\$83,185	\$8,932
Mission	11.1	12.7	\$65,923	\$73,480	\$7,557
Nanaimo	13.1	15.5	\$58,971	\$68,239	\$9,268
New Westminster	16.3	18.2	\$66,595	\$77,061	\$10,466
North Vancouver (CY)	16.6	19.7	\$64,175	\$77,652	\$13,477
North Vancouver (DM)	10.2	11.6	\$90,772	\$114,553	\$23,781
Pemberton	8.9	3.1	\$61,802	\$69,860	\$8,058
Penticton	10.2	14.2	\$53,179	\$65,475	\$12,296
Pitt Meadows	8.4	10.0	\$78,024	\$84,799	\$6,775
Port Coquitlam	12.2	14.1	\$75,906	\$87,965	\$12,059
Port Moody	10.7	13.5	\$84,756	\$95,175	\$10,419
Powell River	7.5	5.8	\$56,827	\$64,478	\$7,651
Prince George	10.9	12.7	\$73,591	\$80,147	\$6,556
Prince Rupert	13.3	22.5	\$61,162	\$68,464	\$7,302
Princeton	9.2	6.6	\$50,094	\$58,113	\$8,019
Richmond	20.9	26.0	\$61,627	\$74,790	\$13,163
Saanich	8.6	9.3	\$74,433	\$87,069	\$12,636
Sidney	7.6	12.6	\$63,295	\$71,831	\$8,536
Squamish	9.0	10.9	\$71,459	\$81,139	\$9,680
Surrey	13.6	17.3	\$69,119	\$82,254	\$13,135
Terrace	10.7	14.9	\$62,576	\$72,613	\$10,037
Trail	8.6	14.2	\$57,679	\$66,776	\$9,097
Vancouver	21.4	22.8	\$64,007	\$88,971	\$24,964
Vernon	11.8	15.6	\$56,211	\$67,355	\$11,144
Victoria	17.2	20.1	\$53,916	\$60,601	\$6,685
West Vancouver	13.5	17.5	\$105,448	\$196,659	\$91,211
Whistler	12.3	9.6	\$78,149	\$91,961	\$13,812
White Rock	11.2	15.1	\$75,327	\$89,694	\$14,367

Note: CY=City; DM=District Municipality

Summary

Top three jurisdictions on overall poverty

- Vancouver 21.4%
- Richmond 20.9%
- Burnaby 20.6%

Top three jurisdictions on child poverty

- Duncan 30.1%
- Richmond 26.0%
- Burnaby 24.4%

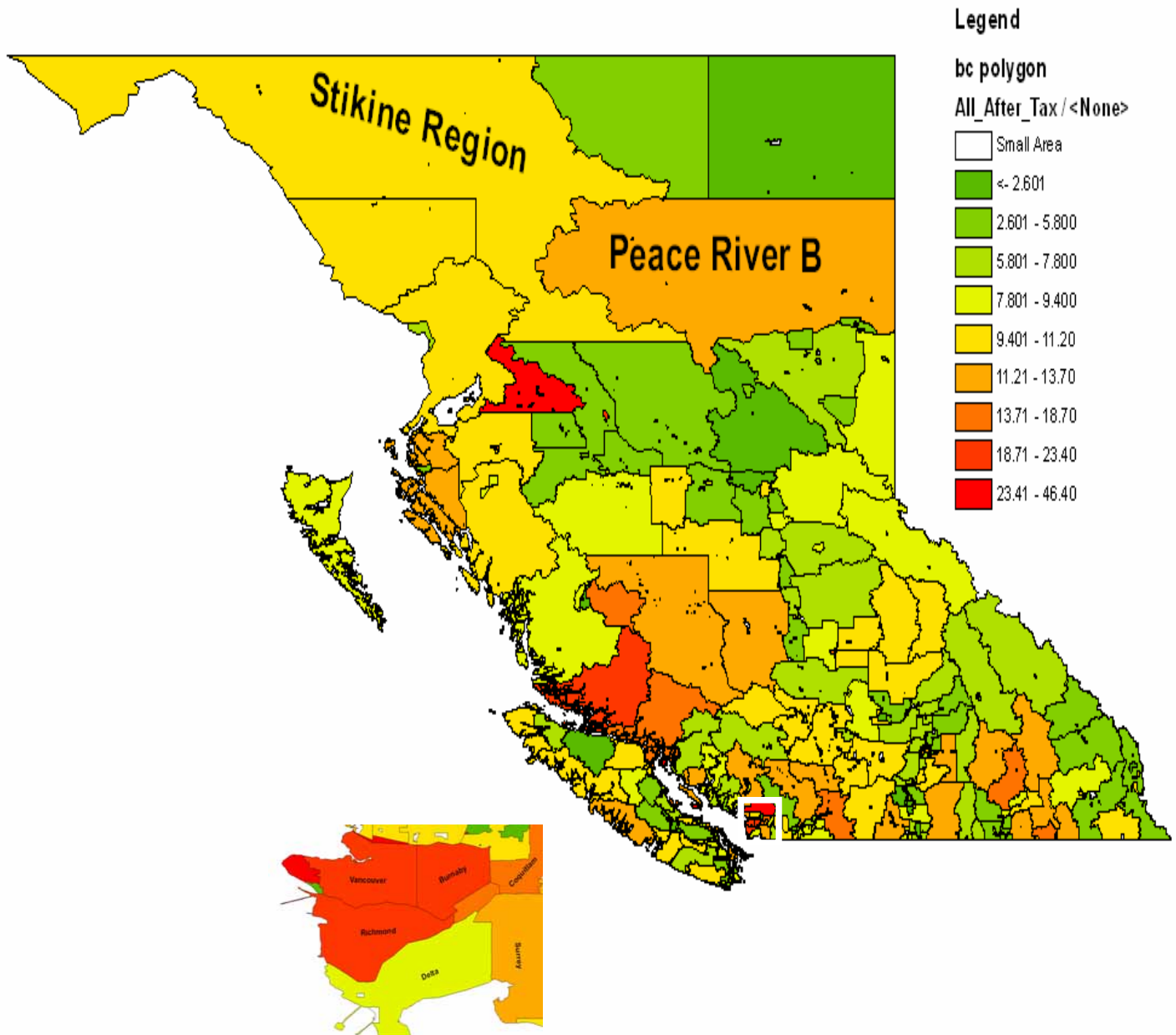
Top three jurisdictions with lowest median family income

- Duncan \$46,538
- Princeton \$50,094
- Hope \$51,752

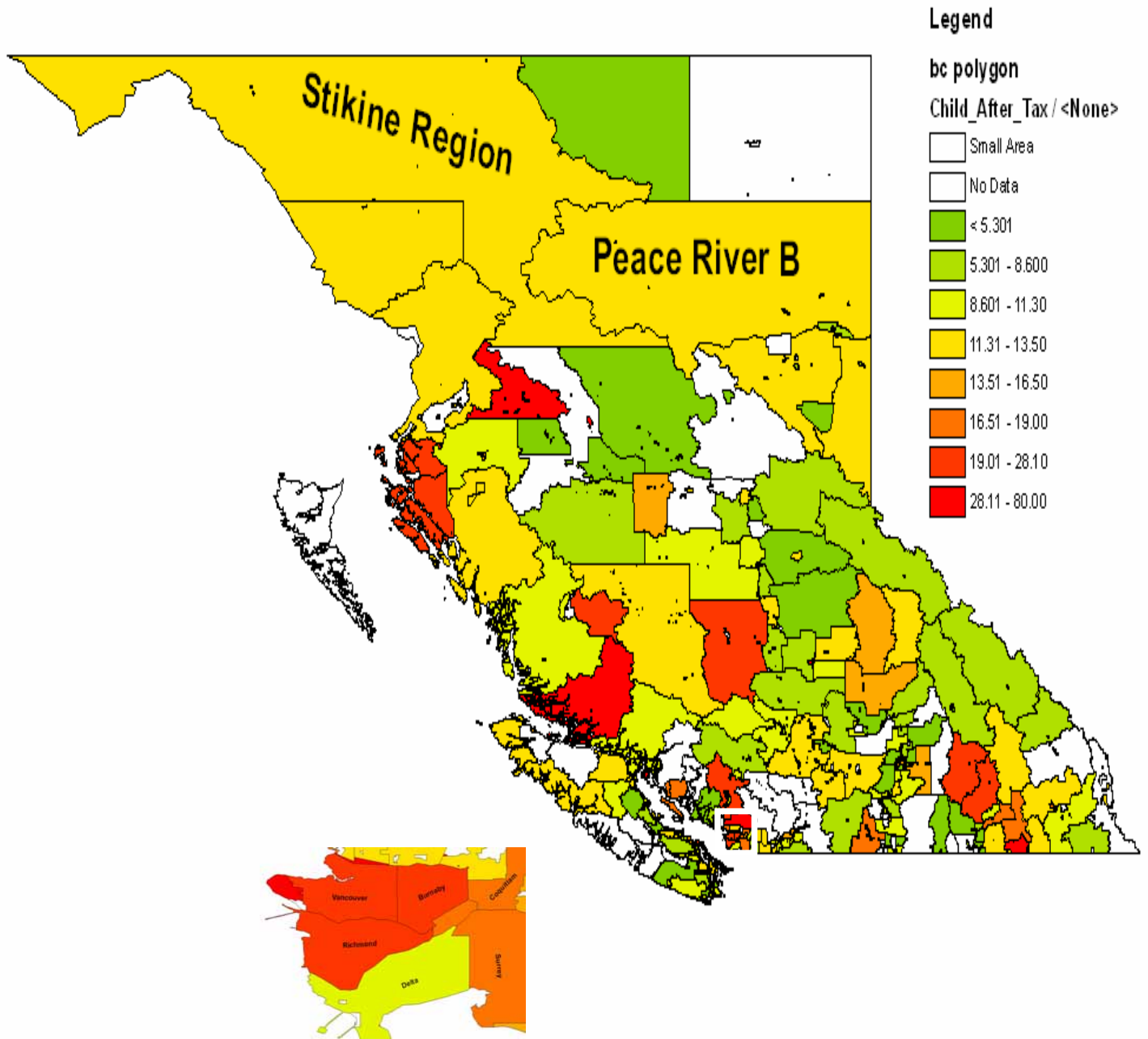
Top three jurisdictions largest income inequalities

- West Vancouver \$91,211
- Vancouver \$24,964
- North Vancouver (DM) \$23,781

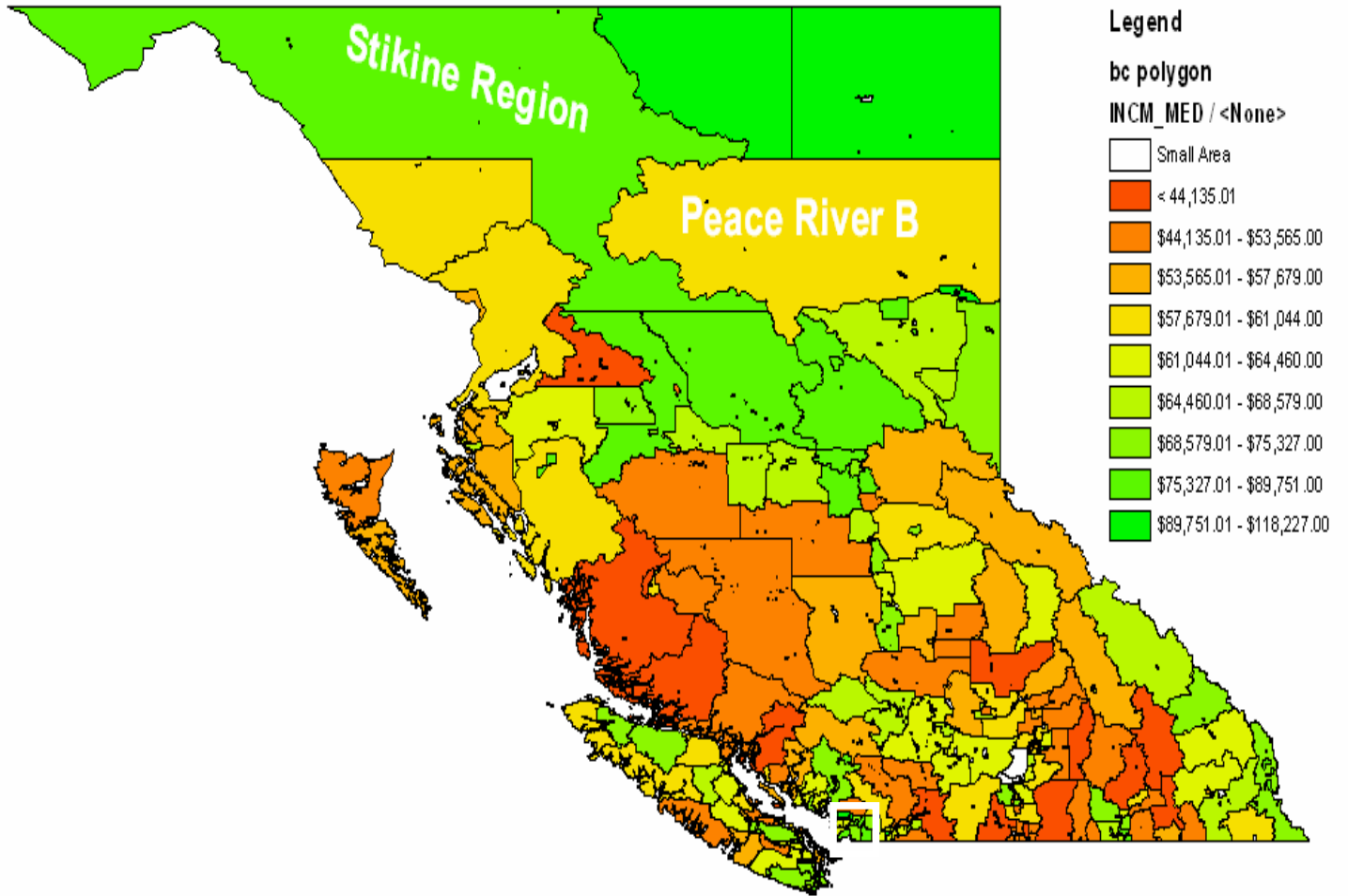
Map of poverty (after tax) in BC for overall population



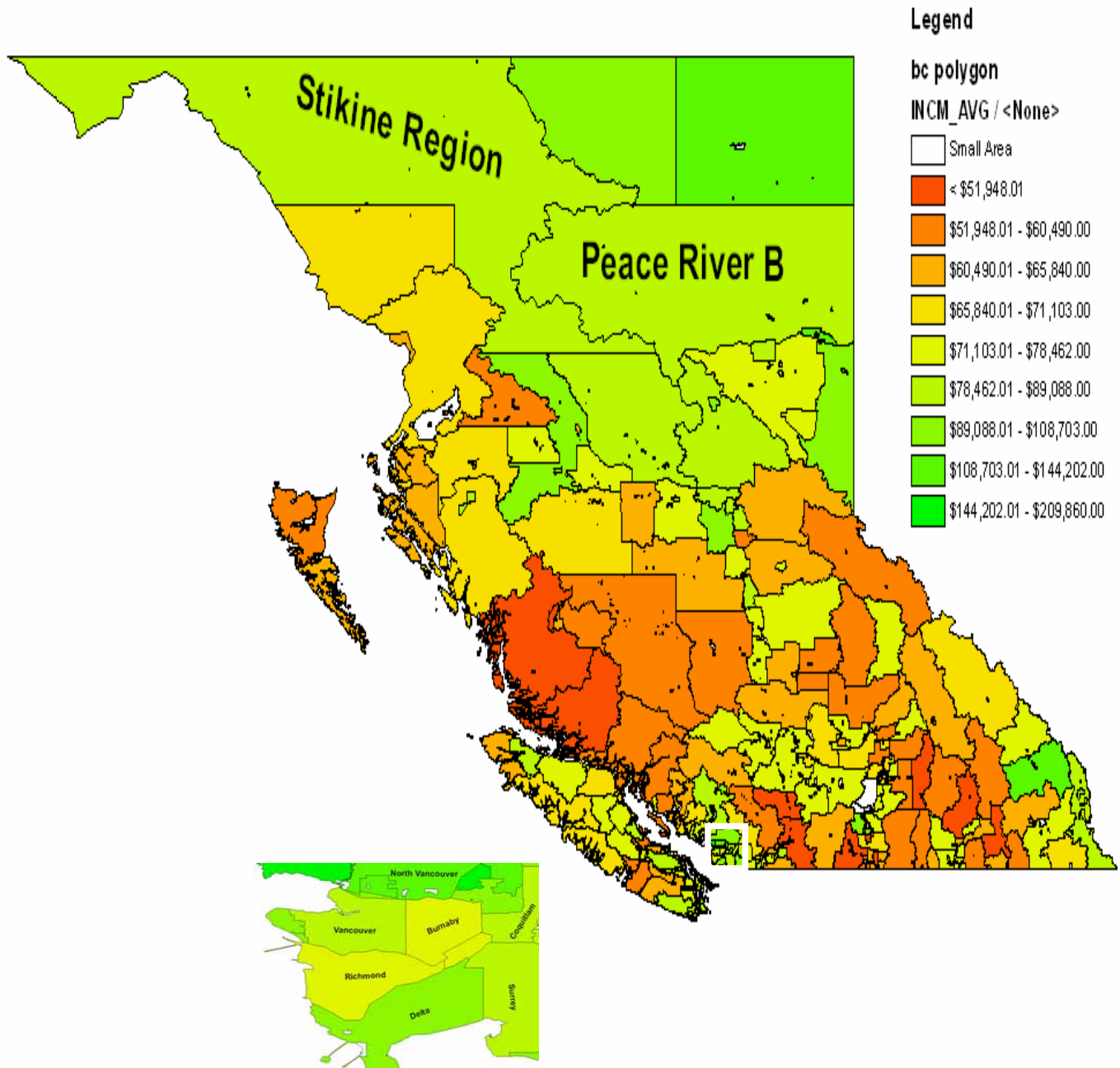
Map of child poverty (after tax) in BC



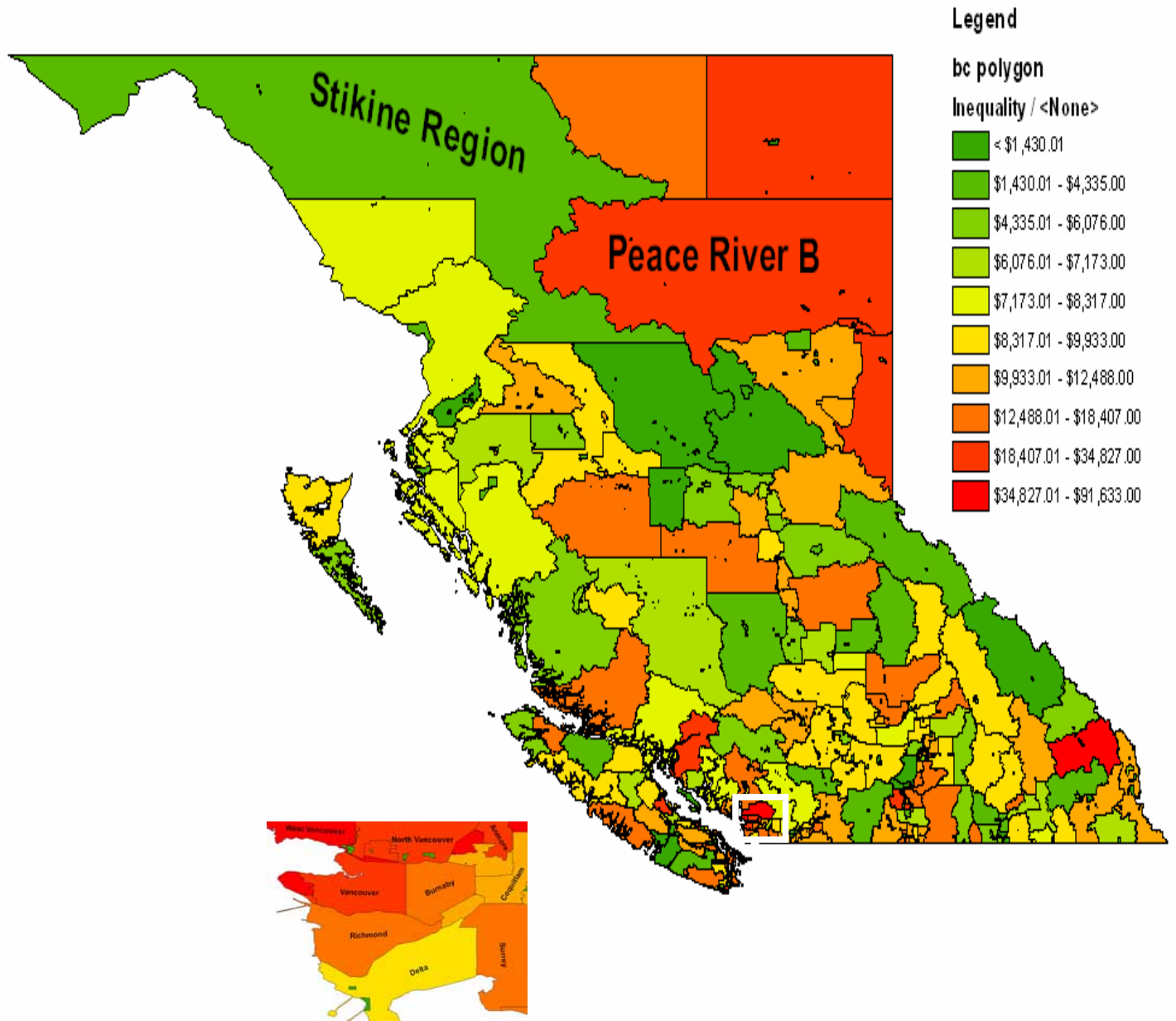
Map of Median family income in BC



Map of Average family income in BC



Map of family income inequalities in BC



Vancouver Coastal Health:

Income Level and Percentages of Population in Low Income Families

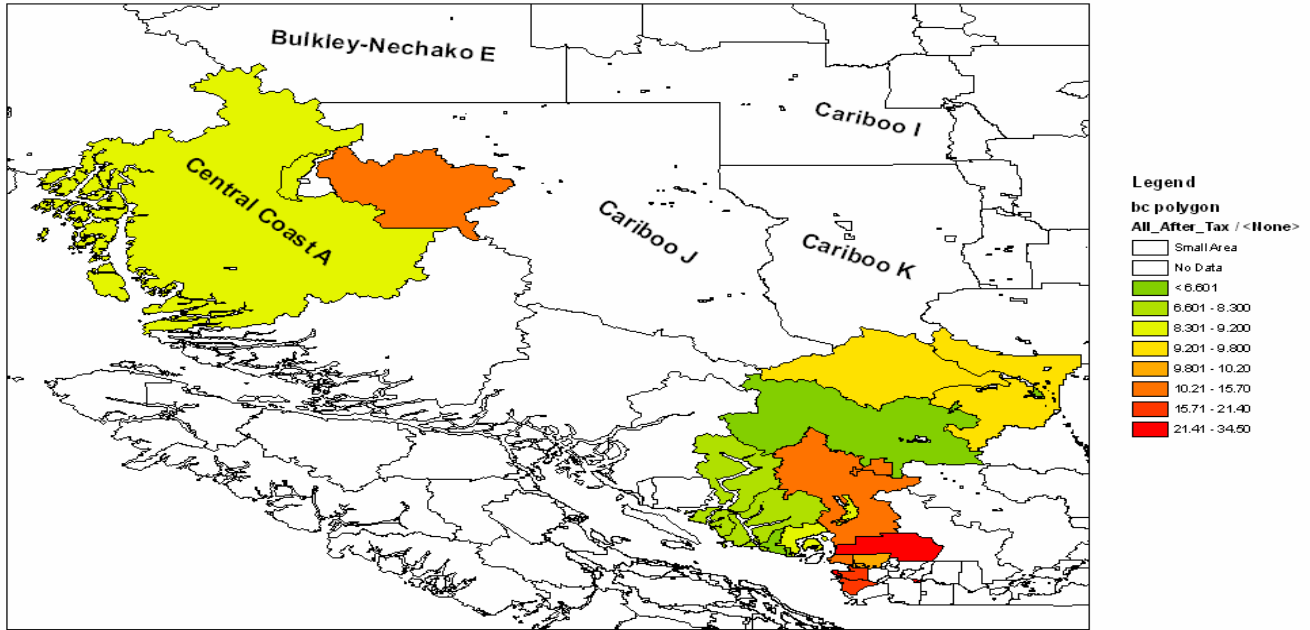
Name	Population in Private Household in Poverty (after-tax)	Children in Poverty in Private Household (after-tax)	Median Family Income for Economic Families	Average Family Income for Economic Families	Income Inequality for Economic Families
CANADA	11.4	13.1	\$66,343	\$82,323	\$15,980
BC	13.1	14.9	\$65,787	\$80,511	\$14,724
Central Coast A	9.1	10.6	\$41,628	\$46,838	\$5,210
Central Coast C	15.7	19.2	\$49,547	\$58,734	\$9,187
Central Coast D	0.0	0.0	\$58,535	\$65,402	\$6,867
Central Coast E	9.1	10.6	\$41,628	\$46,838	\$5,210
Gibsons	8.9	12.8	\$63,629	\$69,786	\$6,157
Great Vancouver (CD)	16.5	18.5	\$69,688	\$87,788	\$18,100
Greater Vancouver A (CSD)	34.5	37.7	\$50,063	\$97,051	\$46,988
Lillooet	6.6	7.5	\$60,923	\$67,748	\$6,825
Lions Bay	12.5	21.3	\$108,151	\$122,156	\$14,005
Musqueam 2	0.0	0.0	\$64,766	\$97,486	\$32,720
North Vancouver (CY)	16.6	19.7	\$64,175	\$77,652	\$13,477
North Vancouver (DM)	10.2	11.6	\$90,772	\$114,553	\$23,781
Pemberton	8.9	3.1	\$61,802	\$69,860	\$8,058
Powell River	7.5	5.8	\$56,827	\$64,478	\$7,651
Powell River A	7.2	0.0	\$40,473	\$59,725	\$19,252
Powell River B	12.2	16.7	\$60,664	\$72,895	\$12,231
Powell River C	12.9	17.2	\$50,338	\$57,104	\$6,766
Powell River D	12.3	18.8	\$57,090	\$57,508	\$418
Powell River E	37.5	0.0	\$19,300	\$22,766	\$3,466
Richmond	20.9	26.0	\$61,627	\$74,790	\$13,163
Sechelt	8.3	7.4	\$56,989	\$68,763	\$11,774
Squamish	9.0	10.9	\$71,459	\$81,139	\$9,680
Squamish-Lillooet A	9.8	9.8	\$66,049	\$76,464	\$10,415
Squamish-Lillooet B	9.8	9.8	\$66,049	\$76,464	\$10,415
Squamish-Lillooet C	6.6	7.3	\$56,395	\$62,352	\$5,957
Squamish-Lillooet D	12.0	22.6	\$71,396	\$86,749	\$15,353
Sunshine Coast A	8.0	0.0	\$56,880	\$64,657	\$7,777
Sunshine Coast B	7.6	4.3	\$61,872	\$69,938	\$8,066
Sunshine Coast D	5.8	5.1	\$69,392	\$85,809	\$16,417
Sunshine Coast E	6.3	8.0	\$64,048	\$69,185	\$5,137
Sunshine Coast F	9.2	7.1	\$63,034	\$73,730	\$10,696
Vancouver	21.4	22.8	\$64,007	\$88,971	\$24,964
West Vancouver	13.5	17.5	\$105,448	\$196,659	\$91,211
Whistler	12.3	9.6	\$78,149	\$91,961	\$13,812

* Value of 0.0 for rates for small areas and/Indian reserves may not represent zero percent of population in poverty. It may only indicate that no calculated number from Statistics Canada is available.

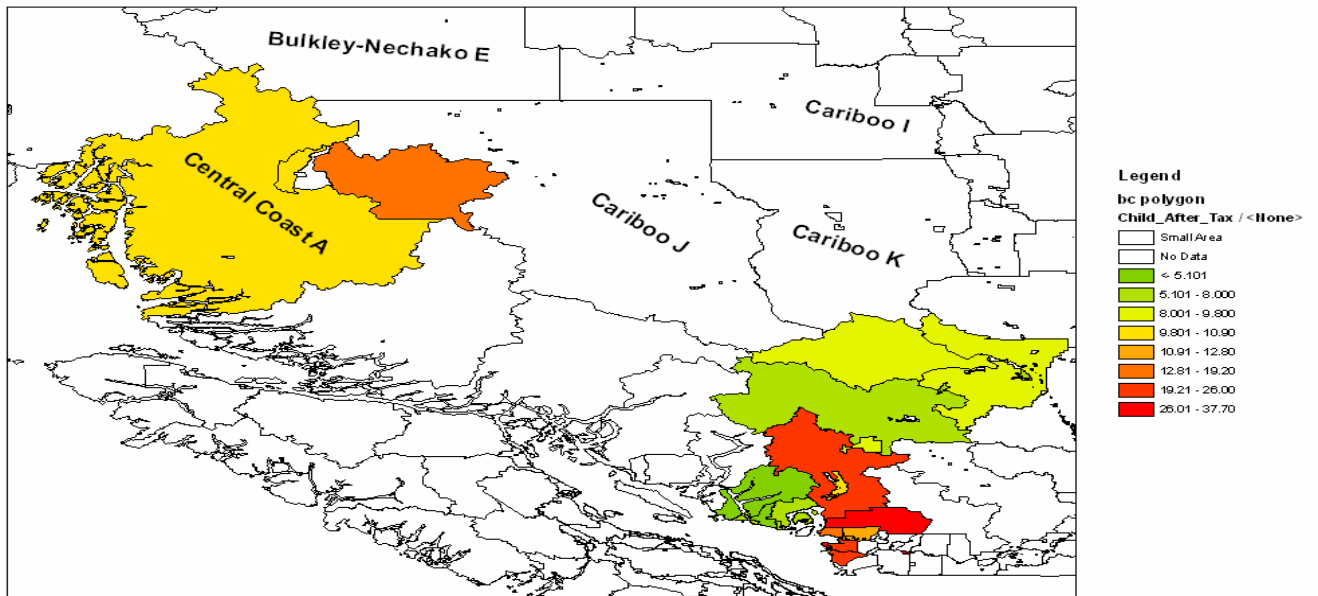
Central Coast A and C were estimated by Central Coast
Squamish-Lillooet A and B were estimated by Squamish-Lillooet

Vancouver Coastal Health Region

Poverty in total population



Poverty in children



Fraser Health:

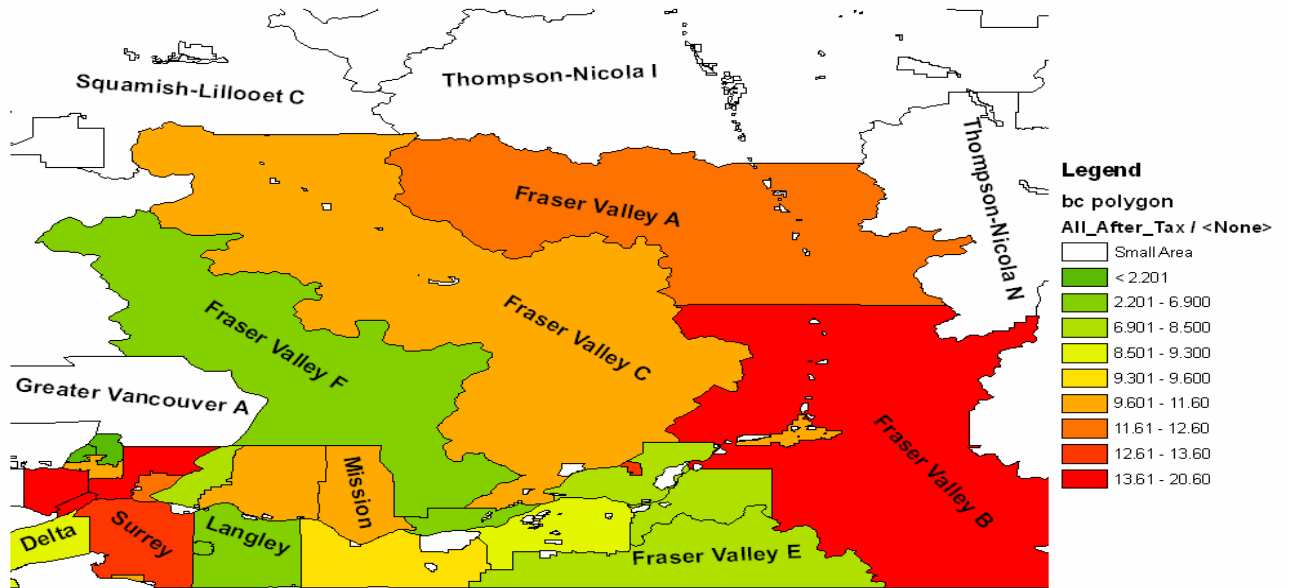
Income Level and Percentages of Population in Low Income Families

Name	Population in Private Household in Poverty (after-tax)	Children in Poverty in Private Household (after-tax)	Median Family Income for Economic Families	Average Family Income for Economic Families	Income Inequality for Economic Families
CANADA	11.4	13.1	\$66,343	\$82,323	\$15,980
BC	13.1	14.9	\$65,787	\$80,511	\$14,724
Abbotsford	9.6	11.7	\$64,089	\$75,934	\$11,845
Anmore	1.1	0.0	\$109,375	\$144,202	\$34,827
Belcarra	2.2	0.0	\$118,227	\$209,860	\$91,633
Burnaby	20.6	24.4	\$61,369	\$74,413	\$13,044
Chilliwack	9.1	10.7	\$61,587	\$71,617	\$10,030
Coquitlam	15.8	18.4	\$70,805	\$82,934	\$12,129
Delta	9.3	11.2	\$84,553	\$94,486	\$9,933
Fraser Valley A	12.6	0.0	\$44,453	\$46,409	\$1,956
Fraser Valley B	17.4	0.0	\$37,659	\$48,519	\$10,860
Fraser Valley C	11.6	0.0	\$52,128	\$59,387	\$7,259
Fraser Valley D	8.5	9.6	\$64,983	\$79,128	\$14,145
Fraser Valley E	8.1	8.5	\$53,435	\$64,491	\$11,056
Fraser Valley F	5.6	0.0	\$58,718	\$67,035	\$8,317
Fraser Valley G	5.7	8.9	\$64,372	\$67,420	\$3,048
Harrison Hot Springs	13.6	22.9	\$49,726	\$54,538	\$4,812
Hope	11.1	16.5	\$51,752	\$61,524	\$9,772
Kent	7.6	14.3	\$52,051	\$60,804	\$8,753
Langley	6.9	7.9	\$80,058	\$93,461	\$13,403
Maple Ridge	11.0	13.5	\$74,253	\$83,185	\$8,932
Mission	11.1	12.7	\$65,923	\$73,480	\$7,557
New Westminster	16.3	18.2	\$66,595	\$77,061	\$10,466
Pitt Meadows	8.4	10.0	\$78,024	\$84,799	\$6,775
Port Coquitlam	12.2	14.1	\$75,906	\$87,965	\$12,059
Port Moody	10.7	13.5	\$84,756	\$95,175	\$10,419
Surrey	13.6	17.3	\$69,119	\$82,254	\$13,135
White Rock	11.2	15.1	\$75,327	\$89,694	\$14,367

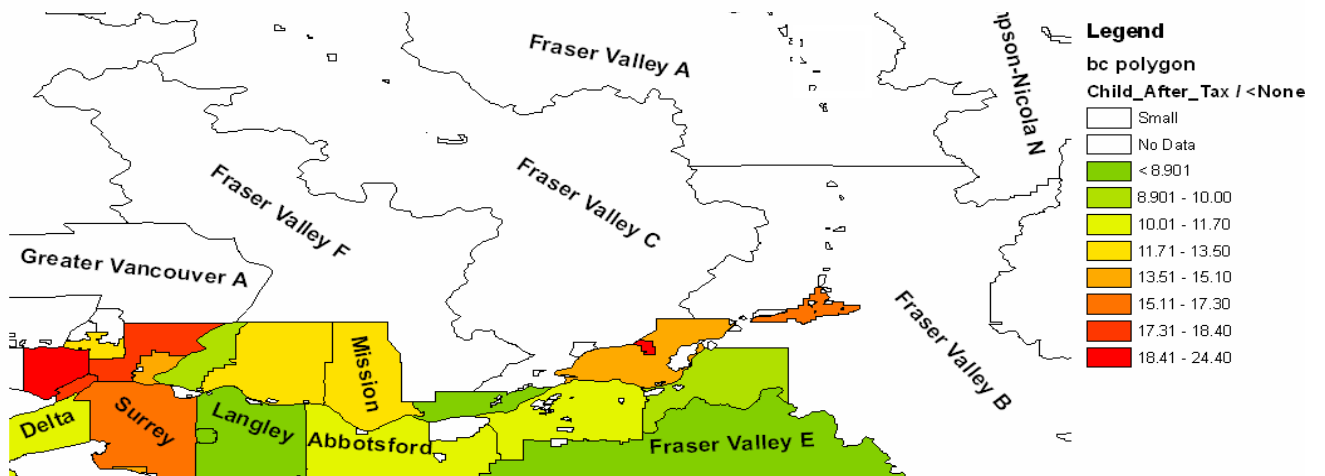
* Value of 0.0 for rates for small areas and/Indian reserves may not represent zero percent of population in poverty. It may only indicate that no calculated number from Statistics Canada is available.

Fraser Health Region

Poverty in total population



Poverty in children



Vancouver Island Health:

Income Level and Percentages of Population in Low Income Families

Name	Population in Private Household in Poverty (after-tax)	Children in Poverty in Private Household (after-tax)	Median Family Income for Economic Families	Average Family Income for Economic Families	Income Inequality for Economic Families
CANADA	11.4	13.1	\$66,343	\$82,323	\$15,980
BC	13.1	14.9	\$65,787	\$80,511	\$14,724
Alberni-Clayoquot A	10.3	0.0	\$56,200	\$55,757	-\$443
Alberni-Clayoquot B	0.0	0.0	\$56,499	\$65,070	\$8,571
Alberni-Clayoquot C	11.8	0.0	\$52,915	\$67,699	\$14,784
Alberni-Clayoquot D	5.6	0.0	\$63,008	\$73,893	\$10,885
Alberni-Clayoquot E	4.9	0.0	\$69,921	\$76,597	\$6,676
Alberni-Clayoquot F	2.1	0.0	\$72,825	\$72,003	-\$822
Alert Bay	7.2	0.0	\$55,960	\$65,982	\$10,022
Campbell River	11.1	13.5	\$63,792	\$70,259	\$6,467
Capital F	11.9	12.5	\$57,560	\$72,500	\$14,940
Capital G	9.6	7.6	\$52,490	\$73,129	\$20,639
Capital H (Part 1)	5.5	4.6	\$69,760	\$79,565	\$9,805
Capital H (Part 2)	9.8	10.4	\$70,153	\$84,032	\$13,879
Central Saanich	5.0	4.6	\$80,675	\$90,987	\$10,312
Colwood	4.5	4.8	\$77,971	\$82,586	\$4,615
Comox	5.4	4.5	\$67,867	\$74,093	\$6,226
Comox-Strathcona A	7.2	6.4	\$59,731	\$88,054	\$28,323
Comox-Strathcona B	7.6	10.5	\$66,383	\$76,212	\$9,829
Comox-Strathcona C	4.5	4.6	\$63,362	\$72,904	\$9,542
Comox-Strathcona D	8.5	11.0	\$68,579	\$75,547	\$6,968
Comox-Strathcona G	10.5	11.7	\$60,231	\$68,804	\$8,573
Comox-Strathcona H	10.5	11.7	\$60,231	\$68,804	\$8,573
Comox-Strathcona I	33.5	44.2	\$28,500	\$34,438	\$5,938
Comox-Strathcona J	14.0	10.4	\$52,301	\$59,895	\$7,594
Comox-Strathcona K	17.3	11.4	\$45,312	\$53,769	\$8,457
Courtenay	14.7	16.1	\$52,841	\$62,215	\$9,374
Cowichan Valley A	3.6	3.2	\$70,674	\$83,440	\$12,766
Cowichan Valley B	5.7	5.7	\$69,014	\$77,843	\$8,829
Cowichan Valley C	4.3	2.5	\$74,869	\$87,845	\$12,976
Cowichan Valley D	6.1	5.8	\$62,530	\$73,565	\$11,035
Cowichan Valley E	7.4	5.9	\$67,745	\$83,227	\$15,482
Cowichan Valley F	7.5	4.3	\$62,438	\$64,693	\$2,255
Cowichan Valley G	9.0	11.0	\$61,227	\$74,417	\$13,190
Cowichan Valley H	6.3	8.8	\$72,136	\$73,223	\$1,087
Cowichan Valley I	9.8	0.0	\$50,753	\$62,837	\$12,084
Cumberland	8.3	6.2	\$53,880	\$56,471	\$2,591
Duncan	17.3	30.1	\$46,538	\$50,415	\$3,877
Esquimalt	12.2	17.5	\$62,974	\$68,648	\$5,674
Gold River	7.7	3.1	\$65,207	\$70,871	\$5,664
Highlands	6.6	6.7	\$83,903	\$92,799	\$8,896
Ladysmith	4.4	2.9	\$61,961	\$68,812	\$6,851
Lake Cowichan	11.1	16.7	\$53,085	\$56,444	\$3,359
Langford	6.9	9.5	\$73,775	\$78,067	\$4,292
Metchosin	3.4	0.0	\$86,514	\$106,099	\$19,585
Mount Waddington A	23.4	36.6	\$34,384	\$48,524	\$14,140
Mount Waddington B	9.7	12.4	\$59,723	\$65,638	\$5,915

Vancouver Island Health (continued)

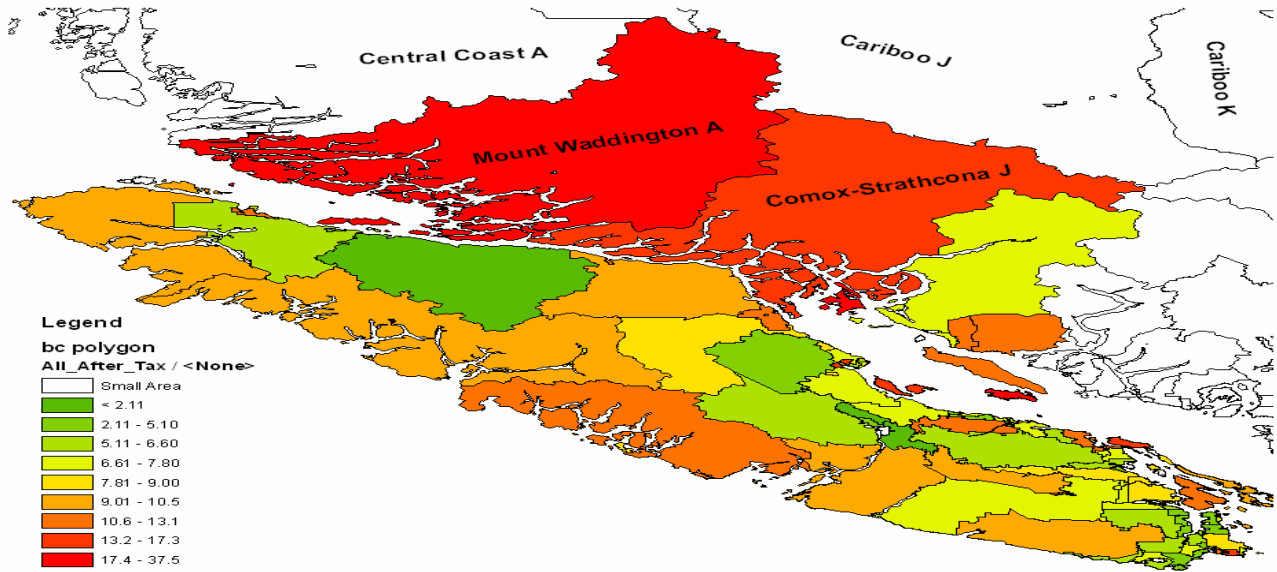
Name	Population in Private Household in Poverty (after-tax)	Children in Poverty in Private Household (after-tax)	Median Family Income for Economic Families	Average Family Income for Economic Families	Income Inequality for Economic Families
CANADA	11.4	13.1	\$66,343	\$82,323	\$15,980
BC	13.1	14.9	\$65,787	\$80,511	\$14,724
Mount Waddington C	6.5	0.0	\$70,901	\$85,867	\$14,966
Mount Waddington D	0.0	0.0	\$73,828	\$76,185	\$2,357
Nanaimo	13.1	15.5	\$58,971	\$68,239	\$9,268
Nanaimo A	7.6	6.3	\$60,911	\$67,943	\$7,032
Nanaimo B	13.7	21.3	\$48,622	\$63,537	\$14,915
Nanaimo C	5.5	7.0	\$70,995	\$83,107	\$12,112
Nanaimo E	6.7	9.1	\$68,277	\$95,469	\$27,192
Nanaimo F	11.0	13.0	\$52,463	\$61,070	\$8,607
Nanaimo G	4.3	2.6	\$61,274	\$72,280	\$11,006
Nanaimo H	6.9	4.8	\$51,143	\$57,843	\$6,700
North Cowichan	8.2	12.2	\$62,125	\$72,258	\$10,133
North Saanich	4.3	7.6	\$91,937	\$114,092	\$22,155
Oak Bay	6.8	6.3	\$96,163	\$140,675	\$44,512
Parksville	7.8	15.7	\$51,233	\$58,628	\$7,395
Port Hardy	11.6	15.3	\$59,120	\$67,049	\$7,929
Port McNeill	3.5	4.2	\$80,204	\$83,189	\$2,985
Qualicum Beach	7.4	9.9	\$57,456	\$68,069	\$10,613
Saanich	8.6	9.3	\$74,433	\$87,069	\$12,636
Sayward	11.8	0.0	\$51,261	\$50,270	-\$991
Sidney	7.6	12.6	\$63,295	\$71,831	\$8,536
Sooke	7.3	9.4	\$65,300	\$70,240	\$4,940
Tofino	8.9	0.0	\$50,385	\$69,934	\$19,549
Ucluelet	13.1	0.0	\$69,025	\$73,200	\$4,175
Victoria	17.2	20.1	\$53,916	\$60,601	\$6,685
View Royal	5.1	2.5	\$77,548	\$89,088	\$11,540

* Value of 0.0 for rates for small areas and/Indian reserves may not represent zero percent of population in poverty. It may only indicate that no calculated number from Statistics Canada is available.

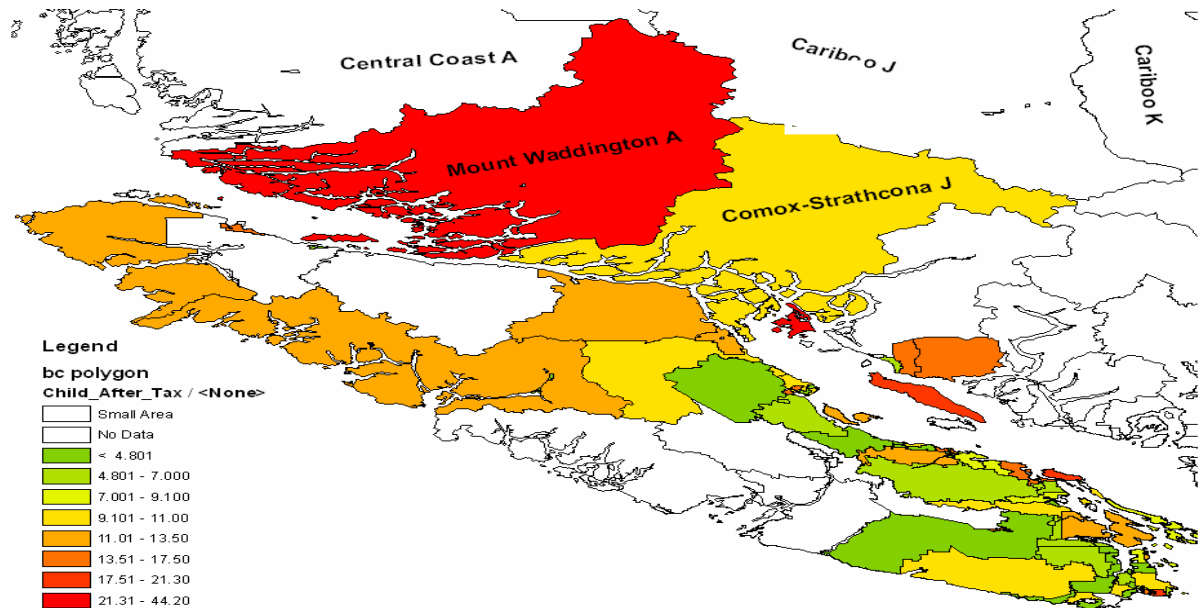
Capital H (Part 2) was estimated by Capital
 Comox-Strathcona G and H were estimated by Comox-Strathcona
 Mount Waddington B was estimated by Mount Waddington

Vancouver Island Health Region

Poverty in total population



Poverty in children



Interior Health:

Income Level and Percentages of Population in Low Income Families

Name	Population in Private Household in Poverty (after-tax)	Children in Poverty in Private Household (after-tax)	Median Family Income for Economic Families	Average Family Income for Economic Families	Income Inequality for Economic Families
CANADA	11.4	13.1	\$66,343	\$82,323	\$15,980
BC	13.1	14.9	\$65,787	\$80,511	\$14,724
Armstrong	7.6	10.6	\$53,544	\$63,900	\$10,356
Ashcroft	15.8	39.0	\$57,461	\$64,416	\$6,955
Cache Creek	21.3	36.8	\$50,595	\$56,437	\$5,842
Cariboo A	5.4	5.9	\$69,003	\$79,485	\$10,482
Cariboo B	6.6	10.7	\$64,577	\$73,113	\$8,536
Cariboo C	6.4	4.8	\$59,746	\$65,084	\$5,338
Cariboo D	7.3	13.1	\$63,540	\$74,278	\$10,738
Cariboo E	5.3	8.2	\$71,771	\$76,270	\$4,499
Cariboo F	6.0	3.1	\$61,166	\$75,828	\$14,662
Cariboo G	8.2	8.5	\$57,551	\$64,191	\$6,640
Cariboo H	11.2	13.4	\$53,003	\$54,640	\$1,637
Cariboo I	11.0	9.1	\$52,481	\$65,836	\$13,355
Cariboo J	12.9	12.1	\$49,280	\$56,406	\$7,126
Cariboo K	12.7	20.0	\$53,765	\$56,882	\$3,117
Cariboo L	10.3	8.9	\$45,171	\$53,060	\$7,889
Castlegar	7.0	8.8	\$66,233	\$76,433	\$10,200
Central Kootenay A	12.4	17.6	\$43,964	\$50,546	\$6,582
Central Kootenay B	11.3	12.7	\$47,971	\$57,212	\$9,241
Central Kootenay C	14.1	34.0	\$55,239	\$62,833	\$7,594
Central Kootenay D	13.6	12.1	\$43,206	\$55,694	\$12,488
Central Kootenay E	11.1	18.0	\$53,565	\$60,704	\$7,139
Central Kootenay F	8.2	8.8	\$60,461	\$74,513	\$14,052
Central Kootenay G	12.2	12.7	\$44,760	\$54,432	\$9,672
Central Kootenay H	18.2	28.1	\$41,347	\$50,115	\$8,768
Central Kootenay I	8.1	8.0	\$62,199	\$65,068	\$2,869
Central Kootenay J	4.9	5.3	\$71,093	\$74,287	\$3,194
Central Kootenay K	13.7	22.1	\$45,075	\$54,047	\$8,972
Central Okanagan I	9.5	10.9	\$61,044	\$75,130	\$14,086
Chase	5.1	6.2	\$51,798	\$61,556	\$9,758
Clinton	13.0	16.0	\$44,135	\$49,176	\$5,041
Coldstream	5.2	6.0	\$77,860	\$97,086	\$19,226
Columbia-Shuswap A	7.8	6.3	\$66,719	\$68,149	\$1,430
Columbia-Shuswap B	6.6	7.3	\$55,866	\$65,366	\$9,500
Columbia-Shuswap C	6.6	8.2	\$51,045	\$60,283	\$9,238
Columbia-Shuswap D	7.7	10.2	\$49,189	\$57,830	\$8,641
Columbia-Shuswap E	5.6	0.0	\$53,246	\$71,653	\$18,407
Columbia-Shuswap F	6.6	7.3	\$55,866	\$65,366	\$9,500
Cranbrook	8.7	12.0	\$59,446	\$70,307	\$10,861
Creston	10.5	16.8	\$47,088	\$54,939	\$7,851
Duck Lake 7	0.0	0.0	\$42,726	\$48,908	\$6,182
East Kootenay A	4.8	0.0	\$69,014	\$81,419	\$12,405
East Kootenay B	10.2	6.0	\$60,126	\$67,011	\$6,885
East Kootenay C	5.5	9.7	\$67,774	\$78,462	\$10,688
East Kootenay E	9.0	11.9	\$61,965	\$65,349	\$3,384
East Kootenay F	3.3	0.0	\$62,881	\$120,049	\$57,168

Interior Health (continued)

Name	Population in Private Household in Poverty (after-tax)	Children in Poverty in Private Household (after-tax)	Median Family Income for Economic Families	Average Family Income for Economic Families	Income Inequality for Economic Families
CANADA	11.4	13.1	\$66,343	\$82,323	\$15,980
BC	13.1	14.9	\$65,787	\$80,511	\$14,724
East Kootenay G	3.9	6.2	\$70,025	\$74,495	\$4,470
Elkford	2.4	0.0	\$79,676	\$86,676	\$7,000
Enderby	9.5	15.2	\$43,804	\$54,089	\$10,285
Fernie	7.9	9.9	\$73,511	\$78,798	\$5,287
Fruitvale	8.7	11.7	\$59,456	\$65,164	\$5,708
Golden	6.9	4.9	\$69,296	\$70,638	\$1,342
Grand Forks	12.8	24.2	\$49,710	\$55,443	\$5,733
Greenwood	12.1	9.5	\$39,824	\$44,644	\$4,820
Invermere	4.2	0.0	\$72,181	\$77,937	\$5,756
Kamloops	10.4	11.3	\$67,434	\$76,518	\$9,084
Kamloops 1	0.0	0.0	\$50,620	\$62,372	\$11,752
Kaslo	16.7	26.0	\$52,167	\$54,021	\$1,854
Kelowna	10.7	12.0	\$61,263	\$76,163	\$14,900
Keremeos	4.8	0.0	\$43,631	\$47,000	\$3,369
Kimberley	10.3	17.4	\$54,345	\$61,072	\$6,727
Kootenay Boundary A	5.3	4.8	\$76,459	\$74,586	-\$1,873
Kootenay Boundary B	3.5	0.0	\$66,226	\$71,583	\$5,357
Kootenay Boundary C	7.3	0.0	\$48,794	\$62,989	\$14,195
Kootenay Boundary D	6.2	4.4	\$53,086	\$59,162	\$6,076
Kootenay Boundary E	12.0	0.0	\$41,224	\$55,184	\$13,960
Lake Country	7.3	9.8	\$65,615	\$77,229	\$11,614
Logan Lake	6.0	4.3	\$66,113	\$71,103	\$4,990
Lumby	9.8	15.2	\$52,803	\$57,919	\$5,116
Merritt	9.9	15.9	\$59,769	\$67,366	\$7,597
Midway	5.0	0.0	\$62,167	\$65,840	\$3,673
Montrose	2.5	0.0	\$72,937	\$79,525	\$6,588
Nakusp	12.0	18.3	\$55,792	\$64,940	\$9,148
Nelson	13.3	16.4	\$57,095	\$62,545	\$5,450
New Denver	18.7	23.5	\$41,089	\$53,246	\$12,157
North Okanagan B	5.9	4.3	\$60,846	\$66,635	\$5,789
North Okanagan C	3.8	4.0	\$64,219	\$74,346	\$10,127
North Okanagan D	13.1	14.2	\$49,820	\$58,454	\$8,634
North Okanagan E	6.7	0.0	\$34,783	\$40,247	\$5,464
North Okanagan F	5.8	4.7	\$53,409	\$59,653	\$6,244
Okanagan (Part) 1	0.0	0.0	\$45,842	\$49,510	\$3,668
Okanagan-Similkameen A	7.5	11.3	\$50,515	\$60,739	\$10,224
Okanagan-Similkameen B	8.8	0.0	\$45,944	\$59,462	\$13,518
Okanagan-Similkameen C	6.4	4.1	\$50,962	\$62,713	\$11,751
Okanagan-Similkameen D	7.9	8.7	\$60,916	\$67,839	\$6,923
Okanagan-Similkameen E	5.8	7.3	\$63,507	\$76,887	\$13,380
Okanagan-Similkameen F	2.5	0.0	\$70,410	\$92,743	\$22,333
Okanagan-Similkameen G	12.2	19.0	\$40,838	\$51,805	\$10,967
Okanagan-Similkameen H	10.6	6.0	\$58,977	\$62,427	\$3,450
Oliver	4.7	7.2	\$50,296	\$62,923	\$12,627
One Hundred Mile House	16.3	33.8	\$53,829	\$61,102	\$7,273
Osoyoos	7.9	8.9	\$50,830	\$58,879	\$8,049
Osoyoos 1	0.0	0.0	\$41,600	\$50,924	\$9,324

Interior Health (continued)

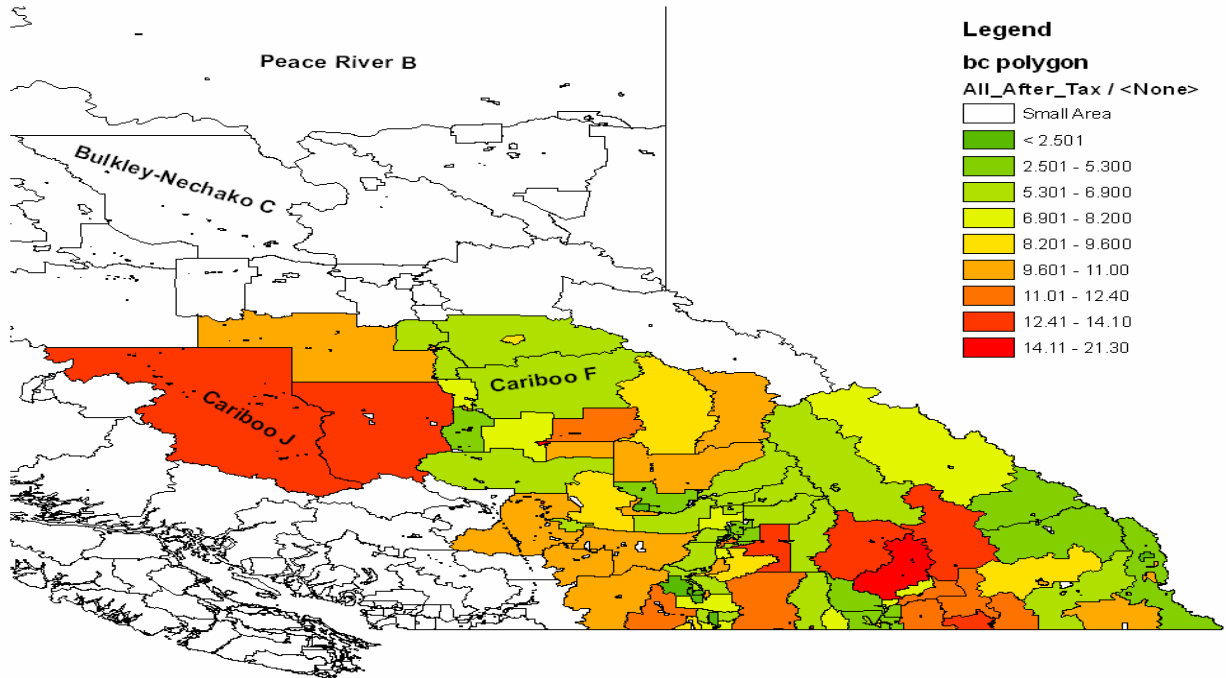
Name	Population in Private Household in Poverty (after-tax)	Children in Poverty in Private Household (after-tax)	Median Family Income for Economic Families	Average Family Income for Economic Families	Income Inequality for Economic Families
CANADA	11.4	13.1	\$66,343	\$82,323	\$15,980
BRITISH COLUMBIA	13.1	14.9	\$65,787	\$80,511	\$14,724
Peachland	11.8	18.4	\$49,674	\$60,490	\$10,816
Penticton	10.2	14.2	\$53,179	\$65,475	\$12,296
Penticton 1	0.0	0.0	\$47,613	\$51,948	\$4,335
Princeton	9.2	6.6	\$50,094	\$58,113	\$8,019
Quesnel	10.7	13.9	\$67,890	\$76,682	\$8,792
Radium Hot Springs	7.6	0.0	\$66,484	\$77,200	\$10,716
Revelstoke	5.5	5.2	\$64,228	\$69,882	\$5,654
Rossland	6.8	8.6	\$79,697	\$84,837	\$5,140
Salmo	8.0	8.9	\$39,080	\$45,114	\$6,034
Salmon Arm	6.6	8.5	\$56,854	\$66,260	\$9,406
Sicamous	3.6	0.0	\$54,859	\$68,597	\$13,738
Slocan	12.7	0.0	\$54,435	\$64,444	\$10,009
Spallumcheen	5.2	6.8	\$59,391	\$70,399	\$11,008
Sparwood	10.5	12.1	\$76,624	\$75,434	-\$1,190
Summerland	6.6	10.1	\$58,888	\$70,472	\$11,584
Thompson-Nicola A	9.6	15.6	\$55,855	\$59,251	\$3,396
Thompson-Nicola B	10.0	11.9	\$61,973	\$71,523	\$9,550
Thompson-Nicola E	6.1	5.9	\$52,311	\$60,800	\$8,489
Thompson-Nicola I	10.0	11.9	\$61,973	\$71,523	\$9,550
Thompson-Nicola J	8.8	7.3	\$56,359	\$66,157	\$9,798
Thompson-Nicola L	5.9	0.0	\$59,439	\$66,973	\$7,534
Thompson-Nicola M	10.0	11.9	\$61,973	\$71,523	\$9,550
Thompson-Nicola N	10.0	11.9	\$61,973	\$71,523	\$9,550
Thompson-Nicola O	11.0	16.2	\$42,063	\$55,036	\$12,973
Thompson-Nicola P	5.2	4.7	\$60,487	\$73,410	\$12,923
Trail	8.6	14.2	\$57,679	\$66,776	\$9,097
Tsinstikeptum 9	0.0	0.0	\$43,965	\$49,637	\$5,672
Tsinstikeptum 10	0.0	0.0	\$53,402	\$66,184	\$12,782
Vernon	11.8	15.6	\$56,211	\$67,355	\$11,144
Warfield	7.6	0.0	\$64,384	\$73,437	\$9,053
Wells	8.6	13.0	\$69,904	\$73,135	\$3,231
Williams Lake	10.2	15.3	\$69,904	\$73,135	\$3,231

* Value of 0.0 for rates for small areas and/Indian reserves may not represent zero percent of population in poverty. It may only indicate that no calculated number from Statistics Canada is available.

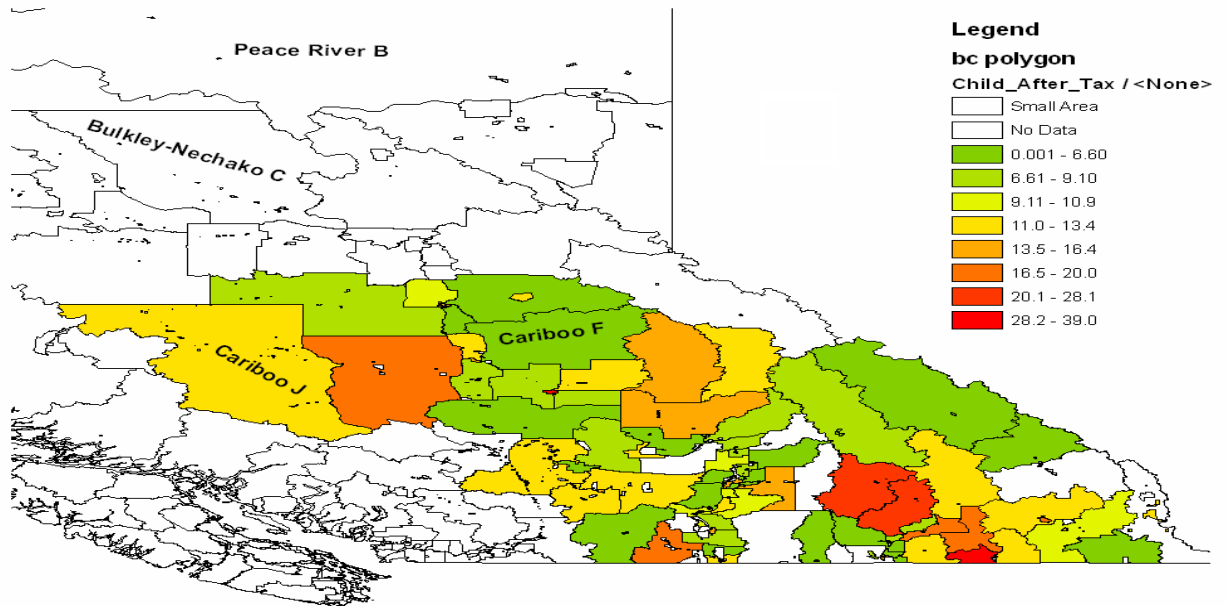
Central Okanagan I was estimated by Central Okanagan
 Columbia-Shuswap B and F were estimated by Columbia-Shuswap
 Thompson-Nicola B, I, M and N were estimated by Thompson-Nicola
 Wells was estimated by Williams Lake

Interior Health Region

Poverty in total population



Poverty in children



Northern Health:

Income Level and Percentages of Population in Low Income Families

Name	Population in Private Household in Poverty (after-tax)	Children in Poverty in Private Household (after-tax)	Median Family Income for Economic Families	Average Family Income for Economic Families	Income Inequality for Economic Families
CANADA	11.4	13.1	\$66,343	\$82,323	\$15,980
BC	13.1	14.9	\$65,787	\$80,511	\$14,724
Bulkley-Nechako A	4.6	4.2	\$72,006	\$77,717	\$5,711
Bulkley-Nechako B	5.7	3.2	\$67,338	\$76,304	\$8,966
Bulkley-Nechako C	5.2	4.2	\$83,609	\$83,203	-\$406
Bulkley-Nechako D	11.2	14.5	\$65,789	\$65,746	-\$43
Bulkley-Nechako E	7.9	7.8	\$53,455	\$66,250	\$12,795
Bulkley-Nechako F	5.4	0.0	\$68,154	\$72,789	\$4,635
Bulkley-Nechako G	4.7	0.0	\$82,603	\$92,110	\$9,507
Burns Lake	20.4	31.9	\$58,412	\$61,719	\$3,307
Chetwynd	5.0	7.1	\$81,274	\$85,020	\$3,746
Dawson Creek	7.6	7.1	\$69,572	\$75,984	\$6,412
Fort Nelson	3.4	4.0	\$95,676	\$108,703	\$13,027
Fort St. James	5.0	0.0	\$80,591	\$84,459	\$3,868
Fraser Valley H	0.0	0.0	\$100,946	\$91,215	-\$9,731
Fraser-Fort George A	2.6	0.0	\$82,265	\$86,642	\$4,377
Fraser-Fort George C	5.7	5.5	\$81,931	\$93,036	\$11,105
Fraser-Fort George D	4.0	3.8	\$77,021	\$83,980	\$6,959
Fraser-Fort George E	9.1	0.0	\$51,339	\$56,870	\$5,531
Fraser-Fort George F	9.4	7.7	\$55,208	\$65,205	\$9,997
Fraser-Fort George G	0.0	0.0	\$78,574	\$78,869	\$295
Fraser-Fort George H	8.9	8.0	\$55,486	\$58,141	\$2,655
Gingolx	0.0	0.0	\$22,515	\$31,320	\$8,805
Granisle	20.5	71.4	\$50,952	\$61,839	\$10,887
Hazelton	46.4	80.0	\$16,765	\$45,081	\$28,316
Houston	5.4	4.9	\$75,237	\$79,493	\$4,256
Hudson's Hope	5.0	0.0	\$75,891	\$78,714	\$2,823
Kitimat	8.7	12.1	\$85,871	\$87,674	\$1,803
Kitimat-Stikine A	10.0	12.7	\$60,195	\$68,484	\$8,289
Kitimat-Stikine B	30.2	52.8	\$43,254	\$53,383	\$10,129
Kitimat-Stikine C (Part 1)	10.1	11.1	\$62,030	\$69,203	\$7,173
Kitimat-Stikine C (Part 2)	10.0	12.7	\$60,195	\$68,484	\$8,289
Kitimat-Stikine D	10.0	12.7	\$60,195	\$68,484	\$8,289
Kitimat-Stikine E	15.1	16.1	\$60,716	\$64,834	\$4,118
Mackenzie	4.6	5.0	\$89,751	\$90,353	\$602
Masset	6.0	0.0	\$56,470	\$62,232	\$5,762
McBride	4.9	0.0	\$61,740	\$63,356	\$1,616
New Aiyansh	0.0	0.0	\$45,824	\$52,433	\$6,609
New Hazelton	12.9	0.0	\$45,967	\$57,255	\$11,288
Northern Rockies A	1.4	0.0	\$97,906	\$118,446	\$20,540
Northern Rockies B	3.2	3.4	\$91,754	\$106,419	\$14,665
Peace River B	11.7	13.1	\$59,243	\$86,090	\$26,847
Peace River C	5.4	6.0	\$93,562	\$118,492	\$24,930
Peace River D	8.7	12.6	\$69,455	\$91,692	\$22,237
Peace River E	6.6	12.0	\$65,594	\$75,910	\$10,316
Port Clements	11.5	33.3	\$51,293	\$61,689	\$10,396
Port Edward	4.8	0.0	\$67,735	\$70,057	\$2,322

Northern Health (continued)

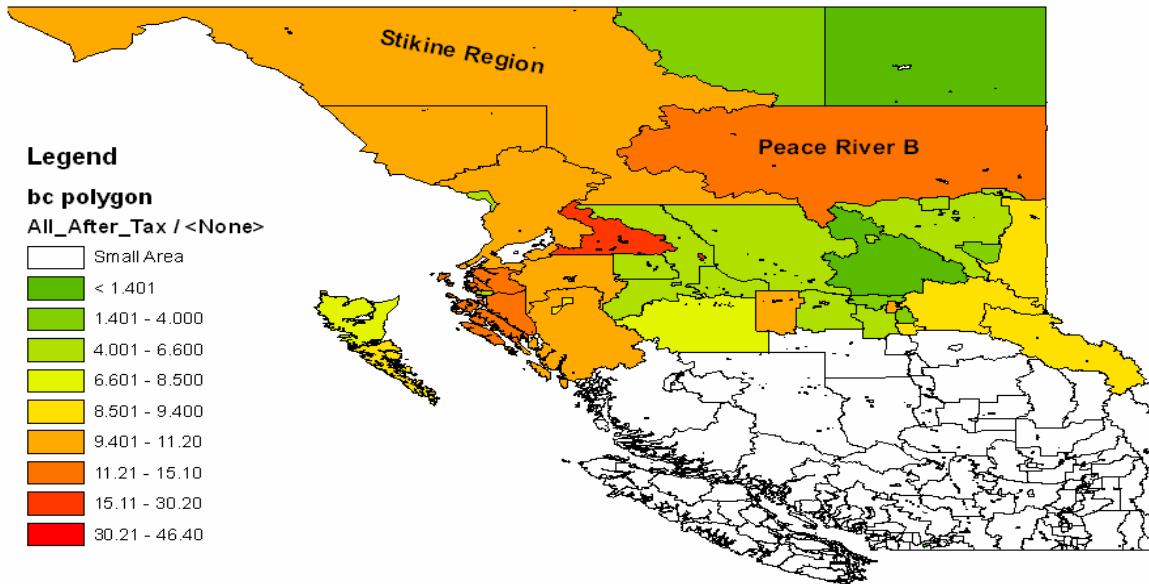
Name	Population in Private Household in Poverty (after-tax)	Children in Poverty in Private Household (after-tax)	Median Family Income for Economic Families	Average Family Income for Economic Families	Income Inequality for Economic Families
CANADA	11.4	13.1	\$66,343	\$82,323	\$15,980
BC	13.1	14.9	\$65,787	\$80,511	\$14,724
Pouce Coupe	0.0	0.0	\$66,818	\$79,079	\$12,261
Prince George	10.9	12.7	\$73,591	\$80,147	\$6,556
Prince Rupert	13.3	22.5	\$61,162	\$68,464	\$7,302
Skeena-Queen Charlotte A	12.3	19.6	\$55,847	\$63,248	\$7,401
Skeena-Queen Charlotte C	12.3	19.6	\$55,847	\$63,248	\$7,401
Skeena-Queen Charlotte D	8.2	0.0	\$49,886	\$58,412	\$8,526
Skeena-Queen Charlotte E	8.9	0.0	\$57,008	\$62,985	\$5,977
Smithers	9.8	11.3	\$64,460	\$69,931	\$5,471
Stewart	6.1	0.0	\$56,355	\$60,596	\$4,241
Stikine Region	9.6	13.3	\$80,313	\$82,876	\$2,563
Taylor	4.7	9.3	\$66,265	\$73,980	\$7,715
Telkwa	0.0	0.0	\$66,717	\$68,491	\$1,774
Terrace	10.7	14.9	\$62,576	\$72,613	\$10,037
Tumbler Ridge	3.9	2.6	\$66,344	\$78,111	\$11,767
Valemount	8.5	13.0	\$55,196	\$60,486	\$5,290
Vanderhoof	9.4	12.5	\$71,308	\$76,812	\$5,504

* Value of 0.0 for rates for small areas and/Indian reserves may not represent zero percent of population in poverty. It may only indicate that no calculated number from Statistics Canada is available.

Kitimat-Stikine A, C(part 2) and D were estimated by Kitimat-Stikine
 Northern Rockies B was estimated by Northern Rockies
 Skeena-Queen Charlotte A and C were estimated by Skeena-Queen Charlotte

Northern Health Region

Poverty in total population



Poverty in children

