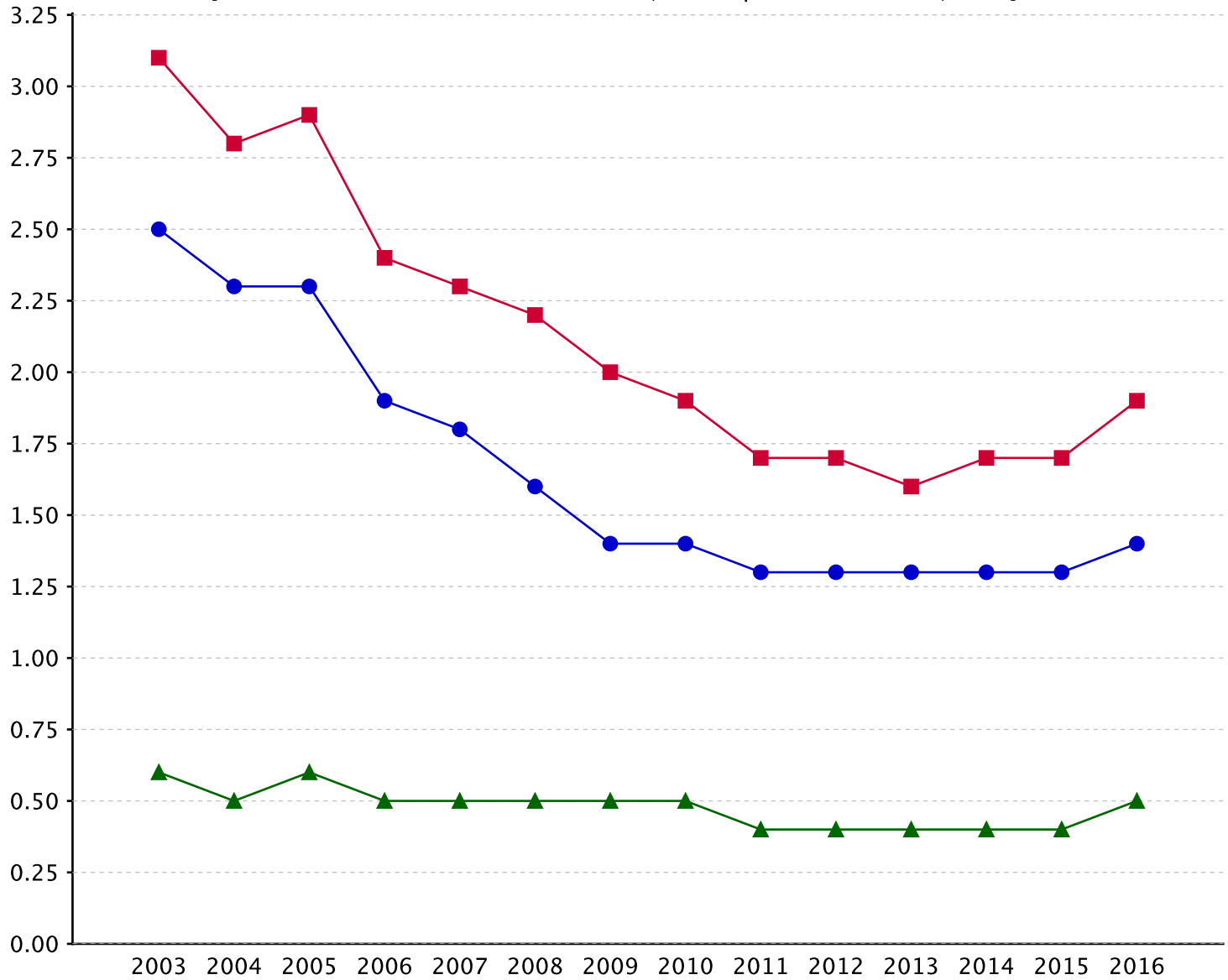


Nonfatal occupational injury and illness incidence rates by case type, Wyoming, private industry, 2003-2016

Year	Cases with days away from work, job transfer, or restriction	Cases with days away from work	Cases with job transfer, or restriction
2003	3.1	2.5	0.6
2004	2.8	2.3	0.5
2005	2.9	2.3	0.6
2006	2.4	1.9	0.5
2007	2.3	1.8	0.5
2008	2.2	1.6	0.5
2009	2.0	1.4	0.5
2010	1.9	1.4	0.5
2011	1.7	1.3	0.4
2012	1.7	1.3	0.4
2013	1.6	1.3	0.4
2014	1.7	1.3	0.4
2015	1.7	1.3	0.4
2016	1.9	1.4	0.5

Nonfatal occupational injury and illness incidence rates by case type, Wyoming, private industry, 2003–2016  
[SOURCE : U.S. Bureau of Labor Statistics, U.S. Department of Labor, 2017]

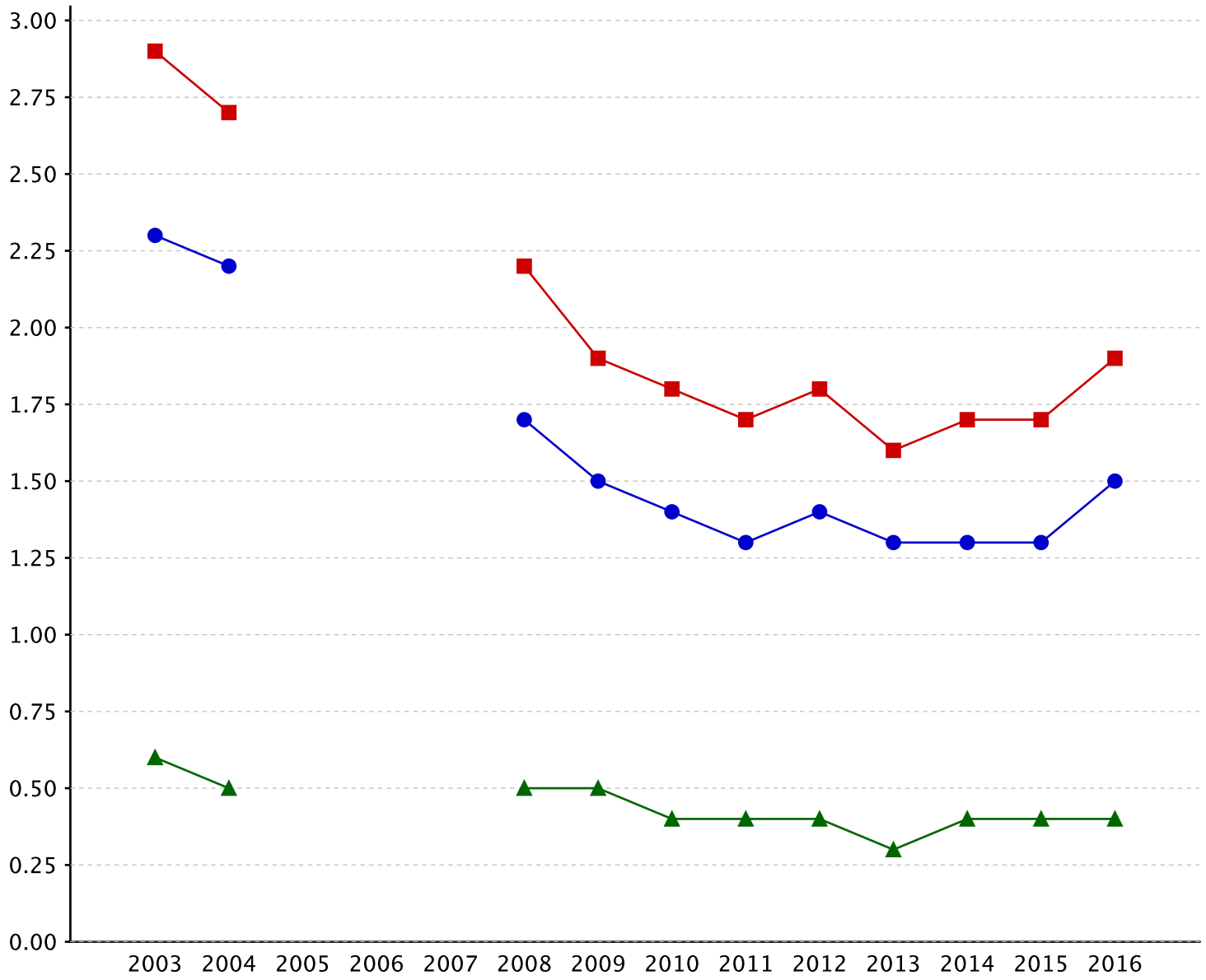


■ Cases with days away from work, job transfer, or restriction    ● Cases with days away from work  
▲ Cases with days of job transfer, or restriction

Nonfatal occupational injury and illness incidence rates by case type, Wyoming, all ownerships, 2003-2016

Year	Cases with days away from work, job transfer, or restriction	Cases with days away from work	Cases with job transfer, or restriction
2003	2.9	2.3	0.6
2004	2.7	2.2	0.5
2005	-	-	-
2006	-	-	-
2007	-	-	-
2008	2.2	1.7	0.5
2009	1.9	1.5	0.5
2010	1.8	1.4	0.4
2011	1.7	1.3	0.4
2012	1.8	1.4	0.4
2013	1.6	1.3	0.3
2014	1.7	1.3	0.4
2015	1.7	1.3	0.4
2016	1.9	1.5	0.4

Nonfatal occupational injury and illness incidence rates by case type, Wyoming, all ownerships, 2003–2016  
[SOURCE : U.S. Bureau of Labor Statistics, U.S. Department of Labor, 2017]



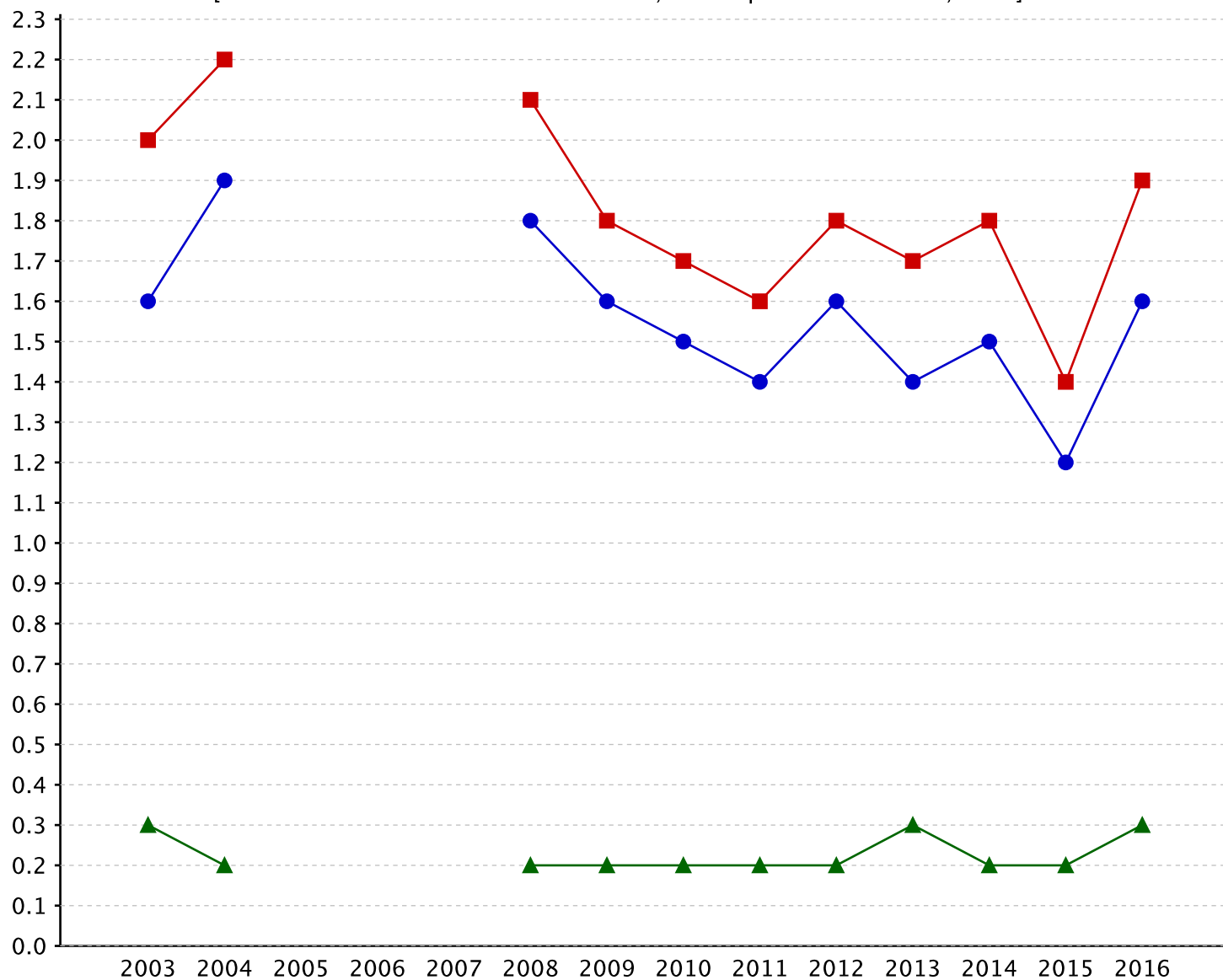
■ Cases with days away from work, job transfer, or restriction    ● Cases with days away from work  
▲ Cases with days of job transfer, or restriction

Nonfatal occupational injury and illness incidence rates by case type, Wyoming, state and local government, 2003-2016

Year	Cases with days away from work, job transfer, or restriction	Cases with days away from work	Cases with job transfer, or restriction
2003	2.0	1.6	0.3
2004	2.2	1.9	0.2
2005	-	-	-
2006	-	-	-
2007	-	-	-
2008	2.1	1.8	0.2
2009	1.8	1.6	0.2
2010	1.7	1.5	0.2
2011	1.6	1.4	0.2
2012	1.8	1.6	0.2
2013	1.7	1.4	0.3
2014	1.8	1.5	0.2
2015	1.4	1.2	0.2
2016	1.9	1.6	0.3

# Nonfatal occupational injury and illness incidence rates by case type, Wyoming, state and local government, 2003-2016

[SOURCE : U.S. Bureau of Labor Statistics, U.S. Department of Labor, 2017]

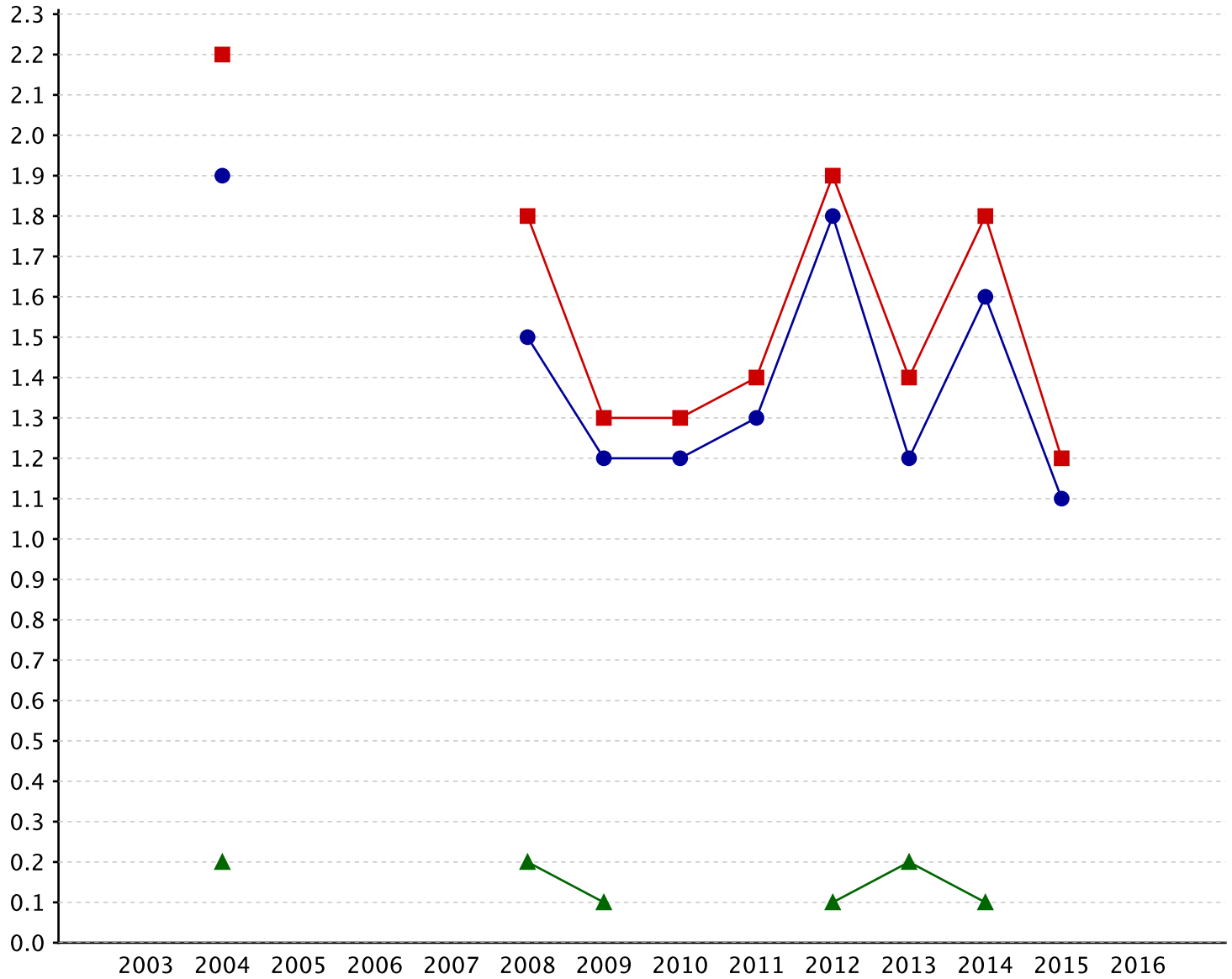


■ Cases with days away from work, job transfer, or restriction   ● Cases with days away from work  
▲ Cases with days of job transfer, or restriction

Nonfatal occupational injury and illness incidence rates by case type, Wyoming, state government, 2003-2016

Year	Cases with days away from work, job transfer, or restriction	Cases with days away from work	Cases with job transfer, or restriction
2003	-	-	-
2004	2.2	1.9	0.2
2005	-	-	-
2006	-	-	-
2007	-	-	-
2008	1.8	1.5	0.2
2009	1.3	1.2	0.1
2010	1.3	1.2	-
2011	1.4	1.3	-
2012	1.9	1.8	0.1
2013	1.4	1.2	0.2
2014	1.8	1.6	0.1
2015	1.2	1.1	-
2016	-	-	-

Nonfatal occupational injury and illness incidence rates by case type, Wyoming, state government, 2003–2016  
[SOURCE : U.S. Bureau of Labor Statistics, U.S. Department of Labor, 2017]



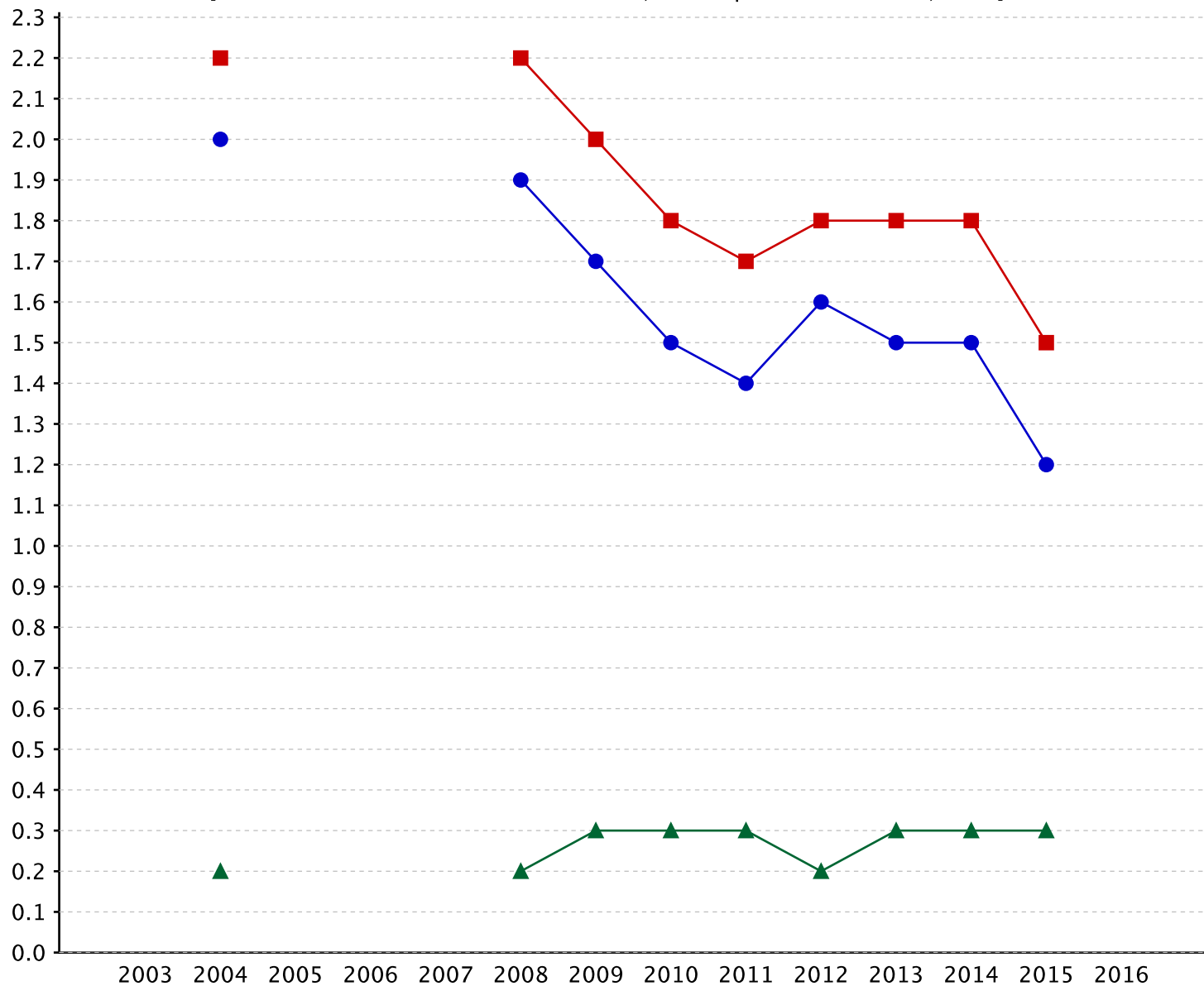
■ Cases with days away from work, job transfer, or restriction ● Cases with days away from work  
▲ Cases with days of job transfer, or restriction



Nonfatal occupational injury and illness incidence rates by case type, Wyoming, local government, 2003-2016

Year	Cases with days away from work, job transfer, or restriction	Cases with days away from work	Cases with job transfer, or restriction
2003	-	-	-
2004	2.2	2.0	0.2
2005	-	-	-
2006	-	-	-
2007	-	-	-
2008	2.2	1.9	0.2
2009	2.0	1.7	0.3
2010	1.8	1.5	0.3
2011	1.7	1.4	0.3
2012	1.8	1.6	0.2
2013	1.8	1.5	0.3
2014	1.8	1.5	0.3
2015	1.5	1.2	0.3
2016	-	-	-

Nonfatal occupational injury and illness incidence rates by case type, Wyoming, local government, 2003–2016  
[SOURCE : U.S. Bureau of Labor Statistics, U.S. Department of Labor, 2017]



■ Cases with days away from work, job transfer, or restriction ● Cases with days away from work  
▲ Cases with days of job transfer, or restriction