

# Physics of infinite complex structure limits in eight dimensions

Seung-Joo Lee,<sup>a</sup> Wolfgang Lerche<sup>b</sup> and Timo Weigand<sup>c,d</sup>

<sup>a</sup>Center for Theoretical Physics of the Universe, Institute for Basic Science,  
Daejeon 34126, South Korea

<sup>b</sup>CERN, Theory Department,  
1 Esplanade des Particules, Geneva 23, CH-1211, Switzerland

<sup>c</sup>II. Institut für Theoretische Physik, Universität Hamburg,  
Luruper Chaussee 149, 22607 Hamburg, Germany

<sup>d</sup>Zentrum für Mathematische Physik, Universität Hamburg,  
Bundesstrasse 55, 20146 Hamburg, Germany

E-mail: [seungjoolee@ibs.re.kr](mailto:seungjoolee@ibs.re.kr), [wolfgang.lerche@cern.ch](mailto:wolfgang.lerche@cern.ch),  
[timo.weigand@desy.de](mailto:timo.weigand@desy.de)

**ABSTRACT:** We investigate infinite distance limits in the complex structure moduli space of F-theory compactified on K3 to eight dimensions. While this is among the simplest possible arenas to test ideas about the Swampland Distance Conjecture, it is nevertheless non-trivial enough to improve our understanding of the physics for these limiting geometries, including phenomena of emergence. It also provides a perspective on infinite distance limits from the viewpoint of open strings. The paper has two quite independent themes. In the main part we show that all degenerations of elliptic K3 surfaces at infinite distance as analysed in the companion paper [1] can be interpreted as (partial) decompactification or emergent string limits in F-theory, in agreement with the Emergent String Conjecture. We present a unified geometric picture of the possible towers of states that can become light and illustrate our general claims via the connection between Kulikov models of degenerating K3 surfaces and the dual heterotic string. As an application we classify the possible maximal non-abelian Lie algebras and their Kac-Moody and loop extensions that can arise in the infinite distance limits. In the second part we discuss the infinite distance behaviour of certain exact quartic gauge couplings. We encounter a tension with the hypothesis that effective couplings should be fully generated by integrating out massive states. We show that by appropriately renormalizing the string coupling, at least partial emergence can be achieved.

**KEYWORDS:** Differential and Algebraic Geometry, F-Theory, String Duality

ARXIV EPRINT: [2112.08385](https://arxiv.org/abs/2112.08385)

---

**Contents**

<b>1</b>	<b>Introduction</b>	<b>1</b>
<b>2</b>	<b>Review: affine algebras and infinite distance limits</b>	<b>8</b>
<b>3</b>	<b>Kulikov models as emergent string limits or decompactifications</b>	<b>11</b>
3.1	Refined Kulikov models for elliptic K3 surfaces	12
3.2	Type II.b Kulikov models as emergent string limits	15
3.3	Type II.a Kulikov models as decompactification limits	17
3.4	Type III.a Kulikov models as partial decompactification limits	19
3.5	Type III.b Kulikov models as weak coupling plus decompactification limits	22
<b>4</b>	<b>Infinite distance limits in the <math>E_7 \times E_8</math>-Weierstrass model</b>	<b>24</b>
4.1	The $E_7 \times E_8$ -Weierstrass model and its heterotic dual	25
4.2	Systematics of affine enhancements in the $E_7 \times E_8$ -Weierstrass model	27
4.3	Type II degenerations	29
4.4	Type III degenerations	31
<b>5</b>	<b>Maximal non-abelian gauge algebras in 9d from Type III.a Kulikov models</b>	<b>38</b>
5.1	A-series and D-series	38
5.2	Maximal $D$ -series: construction	40
<b>6</b>	<b>Emergence of quartic gauge couplings?</b>	<b>43</b>
<b>7</b>	<b>Discussion</b>	<b>50</b>
<b>A</b>	<b>Siegel modular forms: definitions and properties</b>	<b>51</b>

---

**1 Introduction**

Understanding the structure of the landscape of consistent quantum gravity theories, as opposed to the swampland of effective theories without a UV completion involving gravity, is one of the most ambitious goals in modern theoretical physics. Numerous criteria defining the boundary between both types of theories have been proposed within the Swampland Program initiated in [2]. Among these, the Swampland Distance Conjecture [3] arguably plays a central role: it underlies the de Sitter Conjecture in asymptotic regions of moduli space [4], serves as inspiration for the Anti-de Sitter Conjecture [5], the Spin-2 Conjecture [6] and the Gravitino Mass Conjecture [7, 8], predicts a holographically dual CFT Distance Conjecture [9, 10] and, quite generally, illustrates the tension between parametrically large field traversions in cosmology and validity of the effective field theory, to name but a few

aspects.<sup>1</sup> The conjecture asserts that at infinite distance in moduli space, a tower of states becomes light exponentially fast in any quantum gravity theory. From a conceptual point of view, the fascination behind this claim lies in the fact that every quantum gravity theory must enter a new phase at infinite distance in its moduli space where the original effective description breaks down.

Given its special status within the Swampland Program, the Distance Conjecture clearly begs for a more fundamental explanation. In [15] it was proposed that the relevant towers of states, which become light at the parametrically fastest rate on the infinite boundaries of moduli space, are either a (dual) Kaluza-Klein tower or the tower of excitations of an emergent asymptotically weakly-coupled fundamental string. If generally true this would drastically simplify our global picture of the quantum gravity landscape, to the extent that it would reduce the boundaries of moduli space in the asymptotic regime to well controlled theories.<sup>2</sup> This would demystify the breakdown of the effective theory at infinite distance and also offer a new perspective on the Emergence Proposal of [18–20].<sup>3</sup>

This Emergent String Conjecture has been successfully tested for a number of different corners of string and M-theory in various dimensions and in situations with as little as four supercharges. Apart from higher dimensional compactifications [22], this includes  $N = 1$  supersymmetric compactifications of F-theory to six [23] and four [24, 25] dimensions and of M-theory to five [15] and four [26] dimensions, as well as 4d  $N = 2$  supersymmetric compactifications of Type IIA [15] and Type IIB [27]. In all these cases, the moduli space whose infinite distance limits were investigated corresponds to the Kähler moduli space of the underlying Calabi-Yau variety. Intricate features of Kähler geometry guarantee that whenever the parametrically lightest tower of states does not correspond to a Kaluza-Klein tower, a unique (oftentimes solitonic) string emerges. The geometry works in such a way that its excitations lie parametrically at the same scale as a Kaluza-Klein tower and there exists a duality frame in which the emergent string is weakly coupled. Depending on the nature of the moduli space under investigation [25, 27], this rests on a remarkable conspiracy of classical and quantum effects.

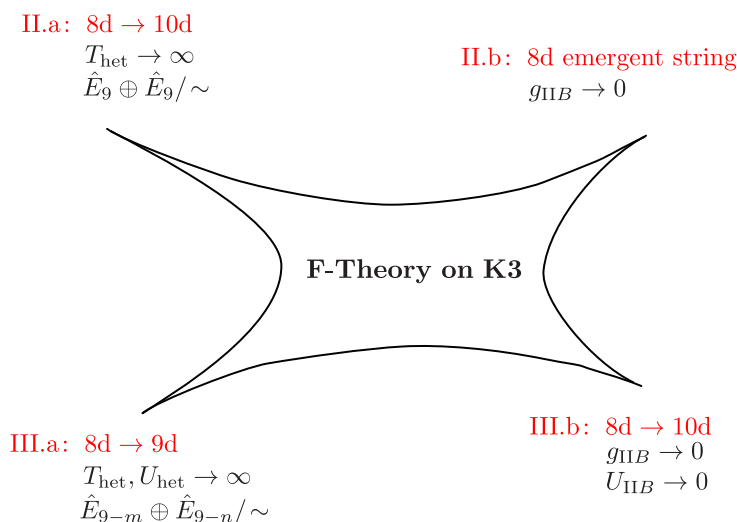
By contrast, an explicit confirmation or falsification of the Emergent String Conjecture in the complex structure moduli space of string compactifications has so far proven to be very difficult. In [20, 28–31] the Swampland Distance Conjecture as such has been quantitatively confirmed for Type IIB compactifications near the asymptotic boundary of complex structure moduli space, by arguing for the appearance of a tower of BPS states from D3-branes wrapping asymptotically vanishing 3-cycles. The mathematical structure of the boundaries of complex structure moduli spaces has been scrutinised from the point of view of asymptotic Hodge theory in a series of further works [32–34]. This program in particular has lead to important insights into the possibilities of moduli stabilisation in

---

<sup>1</sup>For further details and a collection of related works we refer to the reviews [11–14].

<sup>2</sup>A related, but independent idea stressing the role of strings for the asymptotics of moduli space is the Distant Axionic String Conjecture of [16, 17].

<sup>3</sup>An explanation of the Swampland Distance Conjecture based on entropy arguments was recently proposed in [21].



**Figure 1.** Infinite distance complex structure degenerations for F-theory on elliptic K3 surface, and the physics in the various asymptotic regimes.

flux compactifications [35–37], a topic of central relevance in string theory. Irrespective of this progress, it is fair to say that a clear physics interpretation of the infinite towers of states, or even an identification of the parametrically leading towers, is yet to be obtained. By mirror symmetry, Type IIB string theory on Calabi-Yau threefolds is equivalent to corresponding Type IIA compactifications, for which the asymptotically massless states at infinite distance in Kähler moduli space have a clear interpretation as Kaluza-Klein states or emergent string excitations [15]. It is therefore desirable to obtain a comparable understanding of the asymptotic physics directly from the point of view of the complex structure moduli space.

In this paper we embark on this program in the arguably simplest non-trivial context, namely of F-theory compactified to eight dimensions on elliptically fibered K3 surfaces. While at first sight eight-dimensional theories might look straightforward to analyse, especially when viewed as compactifications of the heterotic string on  $T_{\text{het}}^2$ , the structure of infinite distance limits turns out to be surprisingly intricate from the geometric point of view. The focus of our work is therefore on *understanding* the geometry of complex structure degenerations and its match to physics at infinite distance. Our analysis builds on the refinement of the so-called Type III Kulikov models for elliptic K3 surfaces that was elaborated on in the companion paper [1], as well as in the independent series of works of [38–42]. We will obtain perfect agreement between the refined Kulikov models and the possible decompactification or emergent string limits as suggested by the Emergent String Conjecture. For an illustration, see figure 1. We will give a more detailed summary of the main points of this analysis, which are the subject of sections 2–5, in the second part of this introduction.

Moreover, in the largely independent section 6 of this paper, we comment on some other aspects of emergence, profiting from the canonical, highly constrained structure of the theory

in eight dimensions. Specifically, we address the interesting proposal [12, 18–20, 43, 44] that gauge couplings (and by courageous extrapolation, all couplings) emerge in the IR just from integrating out loops of massive states. In particular, their divergence in the decompactification limit arises from integrating out an asymptotically massless tower of KK states or string excitations. In geometric duality frames, such as F-theory, singularities of gauge couplings generally arise from degenerating geometries, for example, from D-branes tied to collapsing or coincident cycles; the prime example being the conifold singularity of Calabi-Yau manifolds. One customarily says that the geometry automatically integrates out the asymptotically massless states.

However, these singularities arise at tree-level of the geometric compactifications, and the question arises whether there exist other duality frames where the singularity, or rather the RG flow for that matter, literally arises from integrating out of loops of massive states. For the conifold singularity in Type II strings compactified on Calabi-Yau threefolds, it is known that the relevant dual perturbative frame is the heterotic string, for which the singularity in the coupling arises at one-loop order due to a massless state circulating in the loop [45].

While this picture is very appealing, it is not a priori guaranteed that for any kind of large distance singularity in the moduli space there exists a duality frame for which the singularity arises from perturbative loops of asymptotically massless states. In fact, already in the early literature [3] it was pointed out that this picture may fail for the special case of Kaluza-Klein gauge symmetries, for which the large distance singularity arises from the diverging volume of the compactification space. For such a case one expects at most partial emergence, in the sense that only part of the divergence may arise at the quantum level [12, 19, 43].

We will address this issue for eight-dimensional theories, which are very restricted in that the perturbative dual frame is unambiguously the heterotic string compactified on  $T_{\text{het}}^2$ , while non-perturbative effects are absent. An extra benefit is that it is the quartic, and not the quadratic gauge couplings that are dimensionless, and this disentangles the issues of gauge fields becoming dynamical at low energies, metric on moduli space, and the running of one-loop diagrams. That is, the quadratic gauge couplings have positive mass dimension and so vanish in the UV; in this sense, gauge dynamics emerges in the IR. But these couplings are not renormalized at one loop order, so one cannot really say that it is the integrating-out of massive states that makes these fields dynamical.

As mentioned, the relevant one-loop exact, BPS saturated gauge couplings in eight dimensions are quartic, and these share a lot (but not all) of the properties of the well-investigated quadratic couplings of  $N = 2$  supersymmetric strings in four dimensions. We will focus only on such couplings of a certain kind, namely on those of the  $U(1)$  gauge fields that arise via KK reduction from ten dimensions. Our point will be to show that certain 1-loop amplitudes, in fact, do not exhibit any singularity in the decompactification limit, but rather all the divergence arises at tree level. This seems to be in tension even with just partial emergence.<sup>4</sup>

---

<sup>4</sup>As we will mention later, this phenomenon appears also in four dimensions and is therefore not an artifact of eight dimensions.

Subsequently we refine the discussion and argue how this situation can be ameliorated, by sweeping part of the problem into a renormalization of the string coupling. In this way, at least partial emergence can be recovered.

The lesson is that the notion of emergence as the phenomenon of literally integrating out states at the quantum level seems to be overly restrictive, at least in the current framework.<sup>5</sup> Because of dualities, there is no absolute distinction between what may be called tree-level or one-loop effect anyway. Indeed the key features of the Swampland Distance Conjecture, such as the appearance of massless towers of states at infinite distances in moduli space, can be well captured in a purely geometric formulation at tree level, irrespective of whether or not there exists a duality frame for which the singularity arises at the quantum level.

**Physical interpretation of Kulikov models.** After this general overview, we now summarize in more detail the results of sections 2–5, which concern the infinite distance limits in the complex structure moduli space of F-Theory on K3, and in particular their physical interpretation.

According to the classic theory of semi-stable degenerations [46], a K3 surface generally splits into a union of several surface components at infinite distance in complex structure moduli space. The possible degenerations go by the name of Kulikov Type II and Type III models [47–50].<sup>6</sup> The theory of asymptotic Hodge structures guarantees the existence of one (Type III) or two (Type II) transcendental elliptic curves whose calibrated volumes vanish at infinite distance. From the point of view of M-theory on the degenerating space, we therefore expect one or two towers of asymptotically massless states from M2-branes wrapped an arbitrary number of times along these vanishing cycles. This parallels the situation for Type IIB compactifications on Calabi-Yau threefolds, where towers of states appear from wrapped D3-branes along asymptotically vanishing 3-cycles, as in [20, 28–31]. However, it turns out that these states form in general only part of the asymptotically light towers. This makes it crucial to understand the nature of the asymptotically vanishing cycles and to interpret the physics of the associated states.

It is at this stage that a refined geometric picture of the degeneration comes into play. As is well-known to string theorists already from the works [51–53], the elliptic Type II Kulikov degenerations fall into two qualitatively different sectors, called Type II.a and II.b in [54].

Type II.a models describe the famous stable degeneration limits where the elliptic K3 breaks up into the union of two rational elliptic surfaces intersecting over an elliptic curve.

---

<sup>5</sup>A way out might be that the quantum emergence of KK gauge fields is inherited from an emergence of gravity itself in the higher dimensional theory [12]. We thank Irene Valenzuela for a discussion of this possibility.

<sup>6</sup>Type I models appear at finite distance in moduli space and are not of interest to us here. Notably, they include the standard enhancements of the fibral singularities, which famously lead to non-abelian gauge multiplets valued in a Lie algebra; only a finite number of W-boson states become massless there, physically indicating the finite-distance nature of the limits. This is in sharp contrast with Type II and Type III models at infinite distance, for which we will find an infinite tower of states that become massless. While one may indirectly argue via dualities that the mass scale of the tower decays exponentially in the moduli distance, in this work we focus more on identifying the light states and leave the F-theoretic explorations of the decay rate for future work.

Such limits are dual to the  $T^2$  compactification of the heterotic string in the limit of large volume,  $T_{\text{het}} \rightarrow i\infty$ . Indeed, we will argue that the two towers of wrapped M2-branes have a clear interpretation in F-theory in terms of string junctions: these form the two imaginary roots that enhance the non-abelian gauge algebra to the double-loop algebra

$$G_\infty = (\hat{E}_9 \oplus \hat{E}_9) / \sim \quad (\text{Type II.a}), \quad (1.1)$$

where the quotient indicates that the two imaginary roots of the first double-loop algebra  $\hat{E}_9$  and those of the second  $\hat{E}_9$  are identified. These string junctions are the F-theoretic incarnation of two towers of Kaluza-Klein states in the dual heterotic frame, as expected in the stable degeneration limit. This establishes the Type II.a limits as complete decompactification limits from 8d to 10d.

By contrast, the Type II.b Kulikov models represent limits in which the 10d axio-dilaton diverges as  $\tau_{\text{IIB}} \rightarrow i\infty$ , corresponding to weakly coupled Type IIB orientifold limits. While it is true that the two towers of states from wrapped M2-branes along the two vanishing cycles become asymptotically light, they do not furnish the only parametrically leading light states. Rather, an M2-brane wrapped on a degenerating 1-cycle in the fiber gives rise to an asymptotically tensionless string, which is identified with the perturbative Type IIB string. Its (denser) tower of excitations sits at the same scale as the M2-brane states, and the limit is to be interpreted as an emergent string limit [15] in 8d, rather than a decompactification limit.

While the Type II limits have been known from the classic works [52–54], the remaining Type III limits at infinite distance have only recently been understood systematically for elliptic K3 surfaces [1, 38–42], by analysing their associated Weierstrass models. In particular, the refined classification in terms of Type III.a and III.b limits has been established in our companion paper [1] in this way. In both cases, the Weierstrass model of the degenerate K3 surface breaks up into a chain of possibly degenerate elliptic fibrations, where the generic elliptic fibers of the  $i^{\text{th}}$  components are of Type  $I_{n_i}$  in the language of Kodaira’s classification of elliptic fibrations.<sup>7</sup> It is guaranteed that  $n_i > 0$  for the middle components and hence their fibrations degenerate, while three possibilities arise for the end components:

- Both end components are rational elliptic surfaces (Type III.a of first kind);
- one end component is a rational elliptic surface and the other one is a surface with generic  $I_{n>0}$  fibers (Type III.a of second kind);
- both end components are surfaces with generic  $I_{n>0}$  fibers (Type III.b).

Type III.a models are similar to the Type II.a models described above, in the following sense: at the intersection of the rational elliptic end component(s) with the adjacent surface component with generic fibers of Type  $I_{n>0}$ , one vanishing transcendental torus is localised. M2-branes wrapped thereon can be interpreted as string junctions responsible for the

---

<sup>7</sup>Recall that a smooth elliptic fiber is of Type  $I_0$ , while a fiber of Type  $I_k$  with  $k > 1$  is a nodal curve and the result of shrinking the  $(k, 0)$  cycle.

enhancement of an  $E_{9-n}$  algebra to the affine algebra  $\hat{E}_{9-n}$ . For Type III.a limits with two rational elliptic end components, the symmetry algebra hence contains an affine algebra

$$G_\infty \supset (\hat{E}_{9-n} \oplus \hat{E}_{9-m}) / \sim, \quad 1 \leq n, m \leq 9, \quad (\text{Type III.a of first kind}), \quad (1.2)$$

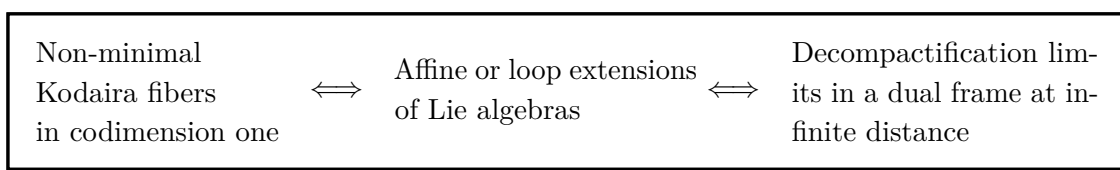
while in models with only a single rational elliptic component only one affine algebra factor can arise. The imaginary root responsible for the affinisation of the symmetry algebra gives rise to a single tower of Kaluza-Klein modes, and the limit is therefore a partial decompactification limit from 8d to 9d.

Type III.b limits, on the other hand, are weak coupling limits in which  $\tau_{\text{IIB}} \rightarrow i\infty$ , while at the same time the complex structure of the Type IIB torus diverges. Such limits must therefore be full decompactifications from 8d to 10d. This might seem, at first sight, to be in tension with the fact that one finds only a single, rather than two independent light towers from wrapped M2-branes. This tower can be interpreted as the winding tower along the small 1-cycle on  $T_{\text{IIB}}^2$ . The missing second tower must correspond to a proper supergravity Kaluza-Klein tower that cannot be detected as easily from geometry, even though the physical interpretation of the limit is unambiguous.

As explained before, the limits of Type II.a and III.a correspond to decompactification limits in the heterotic duality frame, where the infinite distance limit is to be understood as the limit

- $T_{\text{het}} \rightarrow i\infty$  with  $U_{\text{het}}$  finite (Type II.a);
- $T_{\text{het}} \rightarrow i\infty$  with  $T_{\text{het}}/U_{\text{het}}$  finite (Type III.a).

In the original F-theory duality frame, by contrast, the infinite directions in moduli space can be interpreted as non-compact directions in the moduli space of 7-branes. While naively one might think that the open string or brane moduli space, on a compactification space of finite volume and at finite values of the complex structure, should be compact, this is in general not true if one includes mutually non-local 7-branes. The non-compact directions appear when certain such  $(p, q)$  branes approach each other. More precisely, as explained in [55], the affinisation of an  $E_n$  algebra to  $\hat{E}_n$  appears, in the brane picture, when a single 7-brane of certain  $(p, q)$ -type approaches a stack of branes with some gauge algebra  $E_n$ . In such a situation the elliptic fiber degenerates to a non-minimal type in the sense of Kodaira’s classification, i.e., the vanishing orders of the Weierstrass sections  $f$  and  $g$  both exceed the critical values of 4 and 6. The Type II and Type III Kulikov models are obtained by removing these singularities by a chain of blowups in the base. This establishes the following generic correspondence:





In section 2 we begin by reviewing the affinisation of Lie algebras in F-theory in the language of  $(p, q)$  7-branes, as established in [55]. In section 3 we elaborate on the physical interpretation of the possible infinite distance limits of elliptic K3 surfaces, as probed by F-theory. An important test of the resulting picture is provided in section 4, where we systematically construct infinite distance limits for a Weierstrass model with minimal non-abelian gauge algebra  $E_7 \oplus E_8$ ; the geometric results there can be compared quantitatively with the dual heterotic description via the mirror map worked out in [56]. In section 5 we classify the possible maximal enhancements of non-abelian gauge algebras in 9d, as determined by the Type III.a Kulikov models, and find complete agreement with the previous results of [57–59].

## 2 Review: affine algebras and infinite distance limits

Infinite distance limits in the complex structure moduli space of F-theory on elliptic K3 surfaces can be approached from several different angles. The most systematic one is via the theory of semi-stable degenerations of K3 surfaces, and we will follow this route beginning with section 3. To facilitate the physical interpretation of the geometric results, it is beneficial to first sharpen our intuition on the possible phenomena that we expect to encounter at infinite distance in complex structure moduli space.

An obvious non-compact direction is the 10d string coupling,  $g_s$ , i.e. the imaginary part of the axio-dilaton,  $\tau = C_0 + \frac{i}{g_s}$ . It is geometrised in F-theory as the complex structure modulus of the elliptic fiber. In absence of other competing effects, infinite distance limits along the direction  $\tau \rightarrow i\infty$  in the moduli space will describe weak coupling limits. These can be superimposed with infinite distance limits in the complex structure of the torus  $T_{\text{IIB}}^2$  of the associated Type IIB orientifold.

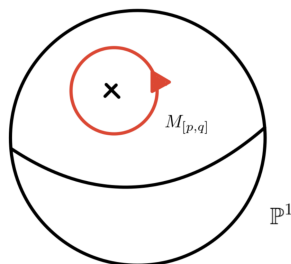
A less evident type of non-compact directions occurs in genuinely non-perturbative configurations with mutually non-local 7-branes, and this corresponds to the formation of certain affine, or more generally loop algebras. Before developing a clear geometric description for such limits in the subsequent sections, we will first take a complementary viewpoint as provided via the formalism of string junctions, which we now briefly review following the discussion in [55].

When we compactify F-theory to eight dimensions, the physical compactification space, as seen from the Type IIB string perspective, is a rational curve which forms the base  $B$  of an elliptic K3 surface  $X$ . The 24 singular fibers of the K3 surface correspond to the locations of 7-branes of general  $[p, q]$ -type. Upon encircling such a location counter-clockwise, as depicted in figure 2, a general  $(r, s)$  string undergoes an  $\text{SL}(2, \mathbb{Z})$  monodromy of the form

$$\begin{pmatrix} r \\ s \end{pmatrix} \rightarrow M_{[p,q]} \begin{pmatrix} r \\ s \end{pmatrix}, \quad M_{[p,q]} = \begin{pmatrix} 1 + pq & -p^2 \\ q^2 & 1 - pq \end{pmatrix}. \quad (2.1)$$

Suitable combinations of such  $[p, q]$  type 7-branes are well known to realize Lie algebras of ADE type [60]. Adopting the conventions of [61], we consider the following set of 7-branes  $X_{[p,q]}$  to serve as building blocks:

$$A = X_{[1,0]}, \quad B = X_{[1,-1]}, \quad C = X_{[1,1]}. \quad (2.2)$$



**Figure 2.** Monodromy around a  $[p, q]$  7-brane in F-theory on K3.

Then gauge theories of ADE type are constructed as configurations of branes including the ones in table 1.<sup>8</sup>

The singularity in moduli space that leads to an enhancement to some finite Lie algebra of ADE type corresponds to a finite distance motion in the 7-brane moduli space. This can be formulated as a finite distance deformation in the complex structure moduli space of the associated elliptic K3 surface  $X$ . The corresponding singularities in the elliptic fiber were famously classified by Kodaira and Néron and can be realized by tuning the vanishing orders of the characteristic functions  $f$  and  $g$  of the Weierstrass model for  $X$ , as recalled in table 2. This raises the natural question whether also infinite distance deformations in this brane moduli space are possible. As we will argue, such deformations correspond to the formation of infinite dimensional loop algebras, rather than ordinary ADE Lie algebras.

In [61] it was explained how an exceptional Lie algebra<sup>9</sup>  $E_N$  can be enhanced to a loop algebra, more precisely an affine algebra of Kac-Moody type, by addition of a single extra brane. Specifically, for  $N = 1 \dots, 8$ , the finite exceptional Lie algebra  $E_N$  can be enhanced into the affine algebra  $\hat{E}_N$  by adding to the brane stack  $A^{N-1}BCC$  an extra 7-brane  $X_{[3,1]}$ :

$$E_N \xrightarrow{+X_{[3,1]}} \hat{E}_N, \quad N = 1, \dots, 8, \tag{2.3}$$

$$\hat{E}_N = E_N X_{[3,1]} = A^{N-1}BCCX_{[3,1]} = A^{N-1}BCBC. \tag{2.4}$$

A second series of affine enhancements can be constructed as

$$\hat{\hat{E}}_N \xrightarrow{+X_{[4,1]}} \hat{E}_N, \quad N = 0, \dots, 8, \tag{2.5}$$

$$\hat{\hat{E}}_N = (A^N X_{[2,-1]} C) X_{[4,1]}, \tag{2.6}$$

which for  $2 \leq N \leq 8$  turns out to be equivalent to the series (2.3). However for  $N = 1$  and  $N = 0$  this yields independent enhancements, with  $\hat{\hat{E}}_1 = u(1)$  and  $\hat{\hat{E}}_0 = \emptyset$ .

The resulting brane configuration induces an  $SL(2, \mathbb{Z})$  monodromy of the form

$$M_{\hat{\hat{E}}_N} = M_{\hat{E}_N} = \begin{pmatrix} 1 & 9 - N \\ 0 & 1 \end{pmatrix}. \tag{2.7}$$

<sup>8</sup>Recall that as for characterizing the monodromies, one considers a brane combination  $X_{[p_1, q_1]} \dots X_{[p_n, q_n]}$  as a chain and takes the branch cut induced by the  $SL(2, \mathbb{Z})$  backreaction of the collection of  $[p, q]$  7-branes as a straight line flowing down from  $X_{[p, q]}$ . The monodromy associated with a brane configuration written as such a chain  $X_{[p_1, q_1]} \dots X_{[p_n, q_n]}$  is then computed as the matrix product  $M_{[p_n, q_n]} \dots M_{[p_1, q_1]}$ .

<sup>9</sup>Here  $E_1 = A_1$ ,  $E_2 = A_1 \oplus u(1)$ ,  $E_3 = A_2 \oplus A_1$ ,  $E_4 = A_4$ ,  $E_5 = D_5$ .

$G$	branes	Monodromy $M_G$
$A_N$	$A^{N+1}$	$\begin{pmatrix} 1 & -N-1 \\ 0 & 1 \end{pmatrix}$
$D_N$	$A^N BC$	$\begin{pmatrix} -1 & N-4 \\ 0 & -1 \end{pmatrix}$
$E_N$	$A^{N-1} BCC$	$\begin{pmatrix} -2 & 2N-9 \\ -1 & N-5 \end{pmatrix}$

**Table 1.** Brane content and monodromies for ADE groups on elliptic K3 surfaces.

In particular, it leaves invariant the charges of a  $(1, 0)$  string encircling the configuration because<sup>10</sup>

$$M_{\hat{E}_N} \delta_1 = \delta_1, \quad \delta_1 = \begin{pmatrix} -1 \\ 0 \end{pmatrix}. \tag{2.8}$$

Such a  $(1, 0)$  string winding around a non-trivial path encircling the branes gives rise to a particle in the eight-dimensional field theory, which becomes massless in the limit for which all branes in the  $\hat{E}_N$  configuration coincide, i.e. precisely when  $E_N$  enhances to  $\hat{E}_N$ . See figure 3. The string junctions associated with this state satisfy the relations [61]

$$\delta_1 \cdot \delta_1 = 0, \quad \delta_1 \cdot \alpha_j^{E_N} = 0 \tag{2.9}$$

within the string junction lattice, where  $\alpha_j^{E_N}$  is a string junction associated to one of the simple roots of the Lie algebra  $E_N$ . Group theoretically both conditions identify  $\delta_1$  as the imaginary root within the root lattice of the affine Lie algebra  $\hat{E}_N$  [61]. The possible rank-one affine enhancements which can be obtained in this manner are [61]

$$\begin{aligned} \hat{E}_8, \quad \hat{E}_7, \quad \hat{E}_6, \quad \hat{E}_5 = \hat{D}_5, & \tag{2.10} \\ \hat{E}_4 = \hat{A}_4, \quad \hat{E}_3 = \widehat{A_2 \oplus A_1}, \quad \hat{E}_2 = \widehat{A_1 \oplus u(1)}, \quad \hat{E}_1 = \hat{A}_1, \quad \hat{E}_1 = \widehat{u(1)}, \quad \hat{E}_0 = \hat{\theta}. \end{aligned}$$

In this list we include for  $\hat{E}_3$  and  $\hat{E}_2$  the imaginary roots for both involved Lie algebras, but identify them such that the total rank increases just by one.

Since the condition for a string junction  $J$  to give rise to a BPS state is that  $J \cdot J \geq -2$ , any multiple

$$n \delta_1, \quad n \in \mathbb{Z} \tag{2.11}$$

gives rise to a BPS state. As a result, we obtain an infinite tower of massless BPS states from the collision of an  $E_N$  brane stack and an  $X_{[3,1]}$  brane, or equivalently in the limit of enhancing  $E_N$  to its affine algebra  $\hat{E}_N$ .

Based on a monodromy analysis, ref. [61] furthermore identifies a number of rank-two enhancements. The only one which turns out to make an appearance in our context is

---

<sup>10</sup>For simplicity of notation, here and in the sequel we will not explicitly refer to  $\hat{E}_N$  as opposed to  $E_N$  unless the difference is important.

the enhancement from  $E_8$  to the double-loop algebra  $\hat{E}_9$ , which is realised as the brane configuration

$$\hat{E}_9 = A\hat{E}_8 = AE_8X_{[3,1]} = A^8BCCX_{[3,1]} = A^8BCBC. \quad (2.12)$$

Its monodromy matrix

$$M_{\hat{E}_9} = \begin{pmatrix} 1 & 0 \\ 0 & 1 \end{pmatrix} \quad (2.13)$$

leaves invariant a 2-dimensional lattice of string junctions spanned by

$$\delta_1 = \begin{pmatrix} -1 \\ 0 \end{pmatrix}, \quad \delta_2 = \begin{pmatrix} 0 \\ -1 \end{pmatrix}. \quad (2.14)$$

These satisfy

$$\delta_i \cdot \delta_j = 0, \quad \delta_1 \cdot \alpha_j^{E_8} = 0 \quad (2.15)$$

and therefore act as the two imaginary roots in the enhancement of  $E_8$  to the double loop algebra  $\hat{E}_9$  (which in fact is not an affine algebra). In the limit of enhancement, one finds two towers of massless BPS states from the junctions

$$n_1\delta_1, \quad n_2\delta_2, \quad n_i \in \mathbb{Z}. \quad (2.16)$$

The appearance of one or two infinite towers of massless states suggests that the affine or double loop enhancements occur at infinite distance in the moduli space. We will show that this intuition is indeed correct, and that the deformations leading to loop algebras are in fact the only possible infinite distance degenerations in the complex structure moduli space of F-theory on K3 except for the weak coupling limits (possibly followed by an infinite distance degeneration in the complex structure of the Type IIB torus  $T_{\text{IIB}}^2$ ). In the Weierstrass models, loop enhancements will be identified as deformations giving rise to certain non-minimal Kodaira singularities over codimension-one loci on the base  $B$ . To remove the non-minimal singularities, a sequence of blowups leads to a degeneration of the K3 into multiple components, which we identify with certain Kulikov models [1]. From a physics perspective, the tower of states associated with the imaginary roots  $\delta$  play the role of a Kaluza-Klein tower in the dual heterotic string and signals decompactification from 8d, either to 9d for affine enhancements to  $\hat{E}_N$  with  $N \leq 8$ , or to 10d for the loop enhancement to  $\hat{E}_9$ . In general, these states may form only a subset of the parametrically leading towers of states which become light, and one of our tasks will be to identify the full set of leading towers in order to establish the correct physical interpretation of the infinite distance limits.

### 3 Kulikov models as emergent string limits or decompactifications

We now present the physical interpretation of the infinite distance limits in the complex structure moduli space of elliptic K3 surfaces. We begin with a quick review of the geometric results from our companion paper [1] which refines the classification of infinite distance limits via Kulikov models in a way suitable for our purposes. The four canonical types of such geometric infinite distance, Type II.a and II.b [54] and Type III.a and III.b [1] (see also [39–42]) are then subsequently analysed from the point of view of F-theory.

Branes	Algebra	Kodaira Type	ord( $f$ )	ord( $g$ )	ord( $\Delta$ )
$A^{n+1}$	$A_n$	$I_{n+1}$	0	0	$n + 1$
$A^n BC$	$D_n$	$I_{n-4}^*$	2	3	$n + 2$
$A^5 BC^2$	$E_6$	$IV^*$	$\geq 3$	4	8
$A^6 BC^2$	$E_7$	$III^*$	3	$\geq 5$	9
$A^7 BC^2$	$E_8$	$II^*$	$\geq 4$	5	10

**Table 2.** Vanishing orders for a Weierstrass model  $y^2 = x^3 + fxz^4 + gz^6$  with discriminant  $\Delta = 4f^3 + 27g^2$  realising the ADE brane configurations of table 1 as singularities in the fiber according to the Kodaira classification.

### 3.1 Refined Kulikov models for elliptic K3 surfaces

Infinite distance limits in the complex structure moduli space of an elliptic K3 surface can be studied within the framework of semi-stable degenerations [46]. For simplicity we will restrict ourselves to one-parameter degenerations as this turns out to be sufficient for understanding the asymptotic physics.

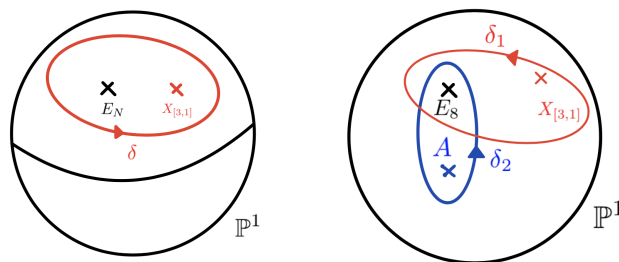
A (one-parameter) degeneration  $\mathcal{X}$  of K3 surfaces is a family of K3 surfaces  $X_u$ , where  $u \in D = \{u \in \mathbb{C} : |u| < 1\}$ . The central fiber of the degeneration,  $X_{u=0}$ , is the degenerate surface which we aim to study. The degeneration is semi-stable if  $X_0$  is a union of surfaces each appearing with multiplicity one such that the total family  $\mathcal{X}$  is smooth as a threefold and the singularities of  $X_0$ , if there are any, are locally of normal crossing form. By the important results of [47–49, 62], every degeneration of K3 surfaces can be brought into the form of a Kulikov model: this means that the degeneration is semi-stable and in addition the family  $\mathcal{X}$  is Calabi-Yau. For general K3 surfaces, the Kulikov models enjoy a classification into models of Type I (at finite distance), Type II and Type III (both at infinite distance).

It is known from the general theory of degenerations of K3 surfaces [46] that the central fiber  $X_0$  of a Type II Kulikov model exhibits two transcendental elliptic curves,  $\gamma_1$  and  $\gamma_2$ , whose calibrated volumes vanish,

$$\text{vol}(\gamma_i) = \int_{\gamma_i} \Omega_0 = 0. \tag{3.1}$$

Here  $\Omega_0$  denotes the (2,0) form on the degenerate surface  $X_0$ . For models of Kulikov Type III there exists only a single such transcendental elliptic curve of asymptotically vanishing volume. If we compactify M-theory on such K3 surfaces, we therefore obtain one or two towers of asymptotically massless BPS particles from M2-branes that wrap the vanishing tori arbitrarily many times. However, as we will see, in general these particles form only a subset of the asymptotically massless towers, and sometimes they do not form the parametrically leading towers. A full understanding of the asymptotic physics therefore requires a refined geometric picture of the degeneration and an analysis of the nature of states which become massless in compactifications of M- or F-theory.

Fortunately, if we restrict ourselves to degenerations of elliptically fibered K3 surfaces, such a geometric picture has been obtained for Type II degenerations in [54] and recently for Type III degenerations in our companion paper [1], as well as in [39–42]. By blowing



**Figure 3.** Monodromy and imaginary junctions for affine Lie algebras  $\hat{E}_N$  (left) and for the loop algebra  $\hat{E}_9$  (right).

down all exceptional curves in the fiber, one obtains a family  $\mathcal{Y}$  of Weierstrass models  $Y_u$ . In particular, to the degenerate K3 surface  $X_0$  one associates a Weierstrass model  $Y_0$ .

Kulikov models of Type I correspond to the degenerations of the elliptic fiber which lie at finite distance in the complex structure moduli. The degeneration  $Y_0$  is a Weierstrass model over a single rational curve  $B_0$  and has singularities in the elliptic fiber of the familiar Kodaira-Néron types as listed in table 2.

For the infinite distance degenerations of elliptic Kulikov Types II and III, on the other hand, the base  $B_0 = \cup_{i=0}^P B^i$  is a *chain* of rational curves  $B^i$ . The surface  $Y_0$  correspondingly decomposes into a chain of surfaces

$$Y_0 = \cup_{i=0}^P Y^i, \tag{3.2}$$

where each surface component  $Y^i$  is a possibly degenerate Weierstrass model over  $B^i$ . By a combination of birational transformations and base changes, elliptic Type II and Type III Kulikov models can be brought into certain canonical forms, which are distinguished as follows:

1. Elliptic Type II models [54]: the degeneration  $\mathcal{X}$  can be brought into the canonical form where  $X_0 = X^1 \cup X^2$  such that  $E := X^1 \cap X^2$  is an elliptic curve.
  - Type II.a (see also [51, 52]):  $X^1$  and  $X^2$  are two rational elliptic surfaces, i.e. elliptic fibrations with 12 singular fibers. The intersection curve  $E$  is the smooth elliptic fiber over the intersection point  $B^1 \cap B^2$  in the base.
  - Type II.b (see also [53]): the base  $B_0$  is a non-degenerate rational curve, and  $X^1$  and  $X^2$  are both rationally fibered over  $B_0$ . The intersection  $X^1 \cap X^2$  is a ramified double cover of  $B_0$ , which indeed describes an elliptic curve  $E$ .
2. Elliptic Type III models [1, 39–42]: the Weierstrass degeneration  $\mathcal{Y}$  associated with  $\mathcal{X}$  can be brought into a canonical form such that each intermediate surface  $Y^i$ ,  $i = 1, \dots, P - 1$  appearing in (3.2) is a degenerate Weierstrass model over a rational base component  $B^i$  with generic fibers of Kodaira Type  $I_{n_i}$ ,  $n_i > 0$ . Over special points of  $B^i$ , the singularity can enhance to an  $A$ -type singularity (in the sense of the

Kodaira classification of table 2).<sup>11</sup> Without loss of generality one can assume that at least one intermediate surfaces are present (i.e.  $P > 1$ ) and that no special fibers are located in the intersection loci of the components.

- Type III.a: one or both of the end components  $Y^0$  and  $Y^P$  are rational elliptic surfaces. If the end component is not rational elliptic, it is a degenerate Weierstrass model with  $I_{n>0}$  fibers over generic points and precisely two singularities of  $D$ -type (along with possibly extra  $A$ -type singularities).
- Type III.b: each of the two end components is a degenerate Weierstrass model with  $I_{n>0}$  fibers over generic points and precisely two singularities of  $D$ -type (along, possibly, with extra  $A$ -type singularities).

The family  $\mathcal{Y}$  of Weierstrass model can be parametrized as

$$Y_u : \quad y^2 = x^3 + f_u(s, t)xz^4 + g_u(s, t)z^6, \quad (3.3)$$

with discriminant

$$\Delta_u = 4f_u^3 + 27g_u^2. \quad (3.4)$$

For  $u \neq 0$ ,  $f_u(s, t)$  and  $g_u(s, t)$  are homogeneous polynomials of degree 8 and 12, respectively, in homogenous coordinates  $[s : t]$  of the base  $B_u = \mathbb{P}_{[s:t]}^1$ . The degeneration occurs in the limit  $u \rightarrow 0$ . Note that, for notational simplicity, we will hereafter omit the subscript  $u$  in the Weierstrass sections  $f$  and  $g$ , as well as in the discriminant  $\Delta$ , of which  $u$ -dependence will be assumed in the context. Then, Kulikov models of Type II.b have the property that the Weierstrass sections in the limit  $u \rightarrow 0$  take the special form

$$f|_{u=0} = -3h^2, \quad g|_{u=0} = 2h^3, \quad (3.5)$$

while otherwise all vanishing orders respect the minimality bound according to Kodaira's classification.<sup>12</sup> As detailed in [1], models of Type II.a, III.a and III.b, on the other hand, are in one-to-one correspondence with Weierstrass models which, for  $u = 0$ , acquire one or several non-minimal fibers. If we choose one of the non-minimal fibers to lie at  $s = 0$ , this implies for the vanishing orders that<sup>13</sup>

$$\text{ord}_{\mathcal{Y}}(f, g, \Delta)|_{u=s=0} = (4 + m, 6 + n, 12 + k), \quad m \geq 0, n \geq 0, k \geq 0, \quad (3.6)$$

with the following correspondence:

- If  $k = 0$ , blowups and base changes can bring the model into Kulikov form of Type II.a.
- If  $m = 0, n = 0$  and  $k > 0$ , the model can be brought into Kulikov form of Type III.a or III.b.

---

<sup>11</sup>Note that our characterisation of the singularity enhancements is in the context of the degenerate K3 surface, while the stated feature of generic  $I_{n_i}$  fibers is observed in the context of the 3-fold  $\mathcal{Y}$ . Hereafter we will not explicitly distinguish the contexts unless potential confusions arise.

<sup>12</sup>The latter condition is satisfied if and only if the degree-4 polynomial  $h$  has four distinct roots.

<sup>13</sup>The classification of vanishing orders is understood modulo base change. This means that one has to consider the maximal vanishing orders which can be obtained by transforming  $u \rightarrow u^k$  for some integer  $k \geq 1$ .

- If  $m > 0$  and  $n > 0$  (and hence  $k > 0$ ), the model can be of Kulikov form of Type I (finite distance) or Type II/III.

Models of Type III.a with only a single rational elliptic end component require, in addition to the above non-minimal singularity, precisely one of the two types of tunings that we will describe below, while Models of Type III.b require the both. The relevant tunings are as follows:

1. The Weierstrass sections restricted to the curve  $u = 0$  take the form

$$f|_{u=0} = -3s^4\hat{h}^2, \quad g|_{u=0} = 2s^6\hat{h}^3, \quad (3.7)$$

where  $\hat{h}$  is a polynomial of degree 2 in  $[s : t]$ .

2. If we denote by  $f_-$  and  $g_-$  the parts of  $f$  and  $g$  consisting only of the terms of degrees  $d_f \leq 4$  and, respectively,  $d_g \leq 6$  in  $s$ , whose vanishing orders in  $u$  are precisely  $(4 - d_f)P$  and  $(6 - d_g)P$ , then these parts take the form [1]

$$f_- = -3t^4(L_0u^{2P}t^2 + L_1u^Pst + L_2s^2)^2, \quad g_- = 2t^6(L_0u^{2P}t^2 + L_1u^Pst + L_2s^2)^3. \quad (3.8)$$

Here  $L_i \in \mathbb{C}$  and the parameter  $P$  coincides with the required number of blowups (i.e. the number of components in (3.2)). For the precise statement see [1].

With this preparation, we are now in a position to analyse the towers of states that become asymptotically massless in both types of limits. This can be approached either in the language of M-theory as before, or via duality directly in F-theory, by analysing the spectrum of branes that wrap the degenerate K3 surface.

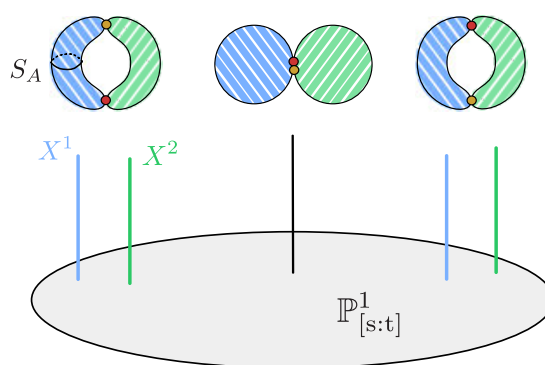
### 3.2 Type II.b Kulikov models as emergent string limits

Let us begin with the Kulikov Type II.b limits, which were first described in this language in the F-theory literature in [53]. The physics of such limits is a perturbative weak coupling limit of Sen type [63, 64].

By definition [54], a Type II.b Kulikov model is constructed as a blowup of a singular elliptic fibration over the base  $\mathbb{P}^1_{[s:t]}$  for which the generic elliptic fiber has degenerated to a nodal curve. This degeneration is the result of the collapse of the  $(1, 0)$  cycle in the elliptic fiber, which we denote by  $S_A$ , while the dual  $(0, 1)$  cycle  $S_B$  of the elliptic fiber survives in the nodal fiber. Blowing up the node replaces the nodal fiber by a Kodaira Type  $I_2$  fiber consisting of a pair of rational curves intersecting, generically, in two points  $p_1$  and  $p_2$ . See figure 4 for an illustration. Over four points,  $p_1$  and  $p_2$  come together to form a double point. The two intersection points  $p_1$  and  $p_2$  define a bi-section, i.e. a double cover of the base branched over the four points where  $p_1$  and  $p_2$  coincide. The 2-cycle defined by the bi-section is identified with the elliptic curve  $E = X^1 \cap X^2$ .

To understand the origin of the transcendental 2-cycles  $\gamma_i$ ,  $i = 1, 2$ , as advertised in (3.1), note that the group  $H_1(E, \mathbb{Z})$  of the intersection curve  $E = X^1 \cap X^2$  is spanned by two 1-cycles, which we denote by  $\sigma_1$  and  $\sigma_2$ . By suitably combining the collapsed one-cycle  $S_A$  with each  $\sigma_i$  one constructs two homologically non-trivial transcendental 2-cycles with





**Figure 4.** Kulikov Type II.b degeneration. Note that the nodes exchange under monodromy around the singular configuration shown in the center.

the topology of a torus, and these two 2-cycles are the objects  $\gamma_1$  and  $\gamma_2$  whose calibrated volume (3.1) vanishes in the degenerate situation.

If we compactify M-theory on  $X_0 = X^1 \cup X^2$ , we obtain the following asymptotically massless objects in seven dimensions: first, an M2-brane wrapping the vanishing cycle  $S_A$  gives rise to an asymptotically tensionless, fundamental Type II string. This string is non-BPS because  $S_A$  is actually homologically trivial. Second, wrapping an M2-brane arbitrarily many times along either of the two calibrated 2-cycles,  $\gamma_1$  and  $\gamma_2$ , yields a tower of BPS particles. Note that the existence of these BPS particles is guaranteed because the 2-cycles  $\gamma_i$  have the topology of a torus and can therefore be wrapped arbitrarily often. The BPS particles are to be identified with the winding states from wrapping the Type II string along the two 1-cycles  $\sigma_1$  and  $\sigma_2$  of  $E$ . The latter sit parametrically at the same scale as the string excitation tower. The winding tower is of course dual to a corresponding Kaluza-Klein tower of supergravity modes of the same parametric mass scale. All in all, the asymptotic spectrum of the Type II.b Kulikov degeneration carries the signature of an Emergent String Limit as defined in [15].

Note that if it were not for the asymptotically tensionless string obtained by wrapping an M2-brane along  $S_A$ , we would have incorrectly characterised the infinite distance limit as a KK decompactification. However the KK modes form only part of the spectrum, and due to the higher density of states it is actually the tower of string excitations which is defining the asymptotic physics as an equi-dimensional weak coupling limit.

From the perspective of F-theory in 8d, this behaviour is of course no surprise. To realise an  $I_2$  fiber over generic points of the base, the vanishing orders of  $f$ ,  $g$  and  $\Delta$  of the Weierstrass model (3.3) must become

$$\text{ord}_{\mathbf{y}}(f, g, \Delta)|_{u=0} = (0, 0, 2) \quad \text{at generic points of } \mathbb{P}^1_{[s:t]}. \quad (3.9)$$

The behaviour of the 10d Type IIB axio-dilaton,  $\tau = C_0 + \frac{i}{g_s}$ , at a generic point of the base can then be read off from the  $j$ -function:

$$j(\tau) \sim \frac{f^3}{\Delta} \sim \frac{1}{u^2} \implies \tau \rightarrow i\infty \quad \text{for } u \rightarrow 0. \quad (3.10)$$

A convenient way to realise the vanishing orders is to consider the degeneration [63]

$$f_u = -3h^2 + u\eta, \quad g_u = -2h^3 + u h \eta - \frac{u^2}{12}\chi, \quad \Delta = -9u^2 h^2 (\eta^2 - h\chi) + \mathcal{O}(u^3), \quad (3.11)$$

where  $h$ ,  $\eta$  and  $\chi$  are polynomials of degree 4, 8 and 12. In the Type IIB orientifold interpretation, the limit  $u \rightarrow 0$  gives rise to an orientifold compactification on the torus  $E$  and the four zeroes of  $h = 0$  correspond to the location of the orientifold planes. If we disregard the overall factor of  $u^2$  in  $\Delta$  as

$$\Delta = u^2 \Delta', \quad (3.12)$$

the vanishing orders at the orientifold become

$$\text{ord}(f_0, g_0, \Delta'_0)|_{h=0} = (2, 3, 2), \quad (3.13)$$

where the subscripts indicate that  $u = 0$  has been taken to begin with. Away from these localised regions, the theory reduces to a weakly coupled, perturbative Type IIB string, which is non-BPS in 8d since the Kalb-Ramond field  $B_2$  is projected out by the orientifold projection. The string tower appears parametrically at the same scale as the two KK towers associated with each one-cycle of  $E$ , and both scales vanish in units of the 8d Planck scale.

Finally, as remarked in [1], a more general parametrisation of weak coupling limits is to simply take

$$f_u = -3h^2 + u^a \eta, \quad g_u = -2h^3 + u^b \rho, \quad (3.14)$$

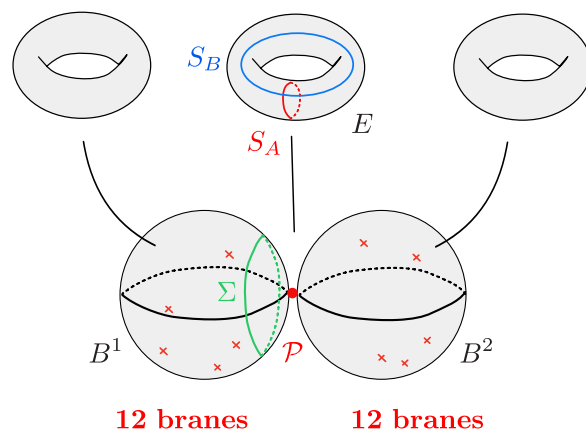
for integral  $a \geq 1$ ,  $b \geq 1$  and generic sections  $\eta$  and  $\rho$  of suitable degree. In this case, the general theorems of [54] guarantee the existence of a birational transformation which, when followed by a suitable base change, brings the fibration into Kulikov form of Type II.b.

### 3.3 Type II.a Kulikov models as decompactification limits

The spectrum of asymptotically massless states in limits of Kulikov Type II.a is very different. The two del Pezzo (dP<sub>9</sub>) surfaces  $X^1$  and  $X^2$  into which the K3 surface degenerates are each elliptically fibered over a rational curve,  $B^1$  and  $B^2$ , respectively. In other words, the base  $\mathbb{P}^1_{[s:t]}$  of the K3 surface  $X_u$  splits for  $u = 0$  into the union of  $B^1$  and  $B^2$  intersecting at a single point  $\mathcal{P} = B^1 \cap B^2$ , and the elliptic double curve  $E = X^1 \cap X^2$  represents the common elliptic fiber over  $\mathcal{P}$ . This geometry was described in the F-theory literature early on in [51–53]. The two 2-cycles  $\gamma_i$  can therefore be constructed by fibering the two one-cycles  $\sigma_i$  in  $H_1(E, \mathbb{Z})$  over a 1-cycle  $\Sigma$  that encircles the intersection point  $\mathcal{P}$  on either  $B^1$  or  $B^2$ . The geometry is sketched in figure 5.

Viewed as a geometric 1-cycle on  $B^1$  or  $B^2$ ,  $\Sigma$  can be slipped off the base sphere by deforming it to the anti-podal pole and is therefore trivial, but fibering both  $\sigma_i$  over  $\Sigma$  near  $\mathcal{P}$  indeed gives rise to two non-trivial 2-cycles  $\gamma_i$ . The asymptotic vanishing of their calibrated volume (3.1) for degeneration parameter  $u = 0$  is an intuitive consequence of the fact that  $\Sigma$  can be contracted towards the intersection point  $\mathcal{P}$ .

The seven-dimensional compactification of M-theory on K3 is therefore characterised by the appearance of two towers of asymptotically massless particles which arise from



**Figure 5.** Kulikov Type II.a degeneration. The base degenerates into two  $\mathbb{P}^1$ s that form the bases of two elliptic del Pezzo surfaces  $dP_9$ .

M2-branes wrapped any number of times on the two 2-cycles  $\gamma_1$  and  $\gamma_2$ . Unlike for limits of Type II.b, these towers of BPS particles are not accompanied by a tower of excitations from an asymptotically tensionless string. The reason is that the M2 brane cannot be wrapped along the 1-cycle  $\Sigma$  on either of the base components, because viewed in isolation  $\Sigma$  can simply be slipped off  $B^1$  or  $B^2$ .

From the point of view of the dual F-theory compactification on K3, these two towers of BPS particles correspond to two towers of asymptotically massless particles in 8d: these arise from string junctions of the form  $n_1 \delta_1$  and  $n_2 \delta_2$ , where  $n_i \in \mathbb{Z}$  represents the winding numbers. If we denote by  $\sigma_1$  and  $\sigma_2$  the  $(1, 0)$  and  $(0, 1)$  cycles on  $E$ , then an M2-brane on  $\gamma_1$  uplifts to a  $(1, 0)$  string and the cycle on  $\gamma_2$  uplifts to a  $(0, 1)$  string, each encircling the intersection point  $\mathcal{P}$  along  $\Sigma$ . The important difference to the M-theory viewpoint is that in F-theory, it is not possible to freely slip the  $(1, 0)$  and  $(0, 1)$  strings on  $\Sigma$  to the other pole of the curves  $B^1$  or  $B^2$ , because the strings would have to cross the 12 7-branes located on either of the two curves.

Nonetheless we can interpret the  $(1, 0)$  and  $(0, 1)$  strings on  $\Sigma$  as string junctions encircling the entire configuration of 12 branes on  $B^1$  or  $B^2$ . This makes contact with the discussion in section 2. The combined monodromy associated with the 12 singular fibers on a  $dP_9$  is unity, and the associated brane configuration would enhance to the double loop algebra  $\hat{E}_9$  if all 12 branes coincide on the  $dP_9$ . The wrapped strings therefore correspond precisely to the two junctions  $\delta_1$  and  $\delta_2$  of section 2. In fact, as we will discuss in more detail in section 4.3, the Type II.a Kulikov model is the result of blowing up a singular Weierstrass model over  $\mathbb{P}^1_{[s:t]}$ , for which a complex structure degeneration enforces the collision of the 12 constituent branes of an  $\hat{E}_9$  configuration at up to two points. At these points, the singularity in the elliptic fiber is non-minimal in the sense of the Kodaira classification, i.e. the Weierstrass vanishing orders become

$$\text{ord}_Y(f, g, \Delta)|_{u=0} = (\geq 4, 6, 12) \quad \text{or} \quad (4, \geq 6, 12). \tag{3.15}$$

Prior to blowing up the non-minimal singularity in the base, one obtains two towers of

asymptotically massless states of the form  $n_1\delta_1$  and  $n_2\delta_2$  localised at the singularity. The blowup gives a regularisation of the non-minimal singularity by separating the 12 branes in such a way that the resulting fiber types are of minimal form. This comes at the cost of degenerating the base into several components. In this regularised geometry, the massless towers of states are still visible as the same types of string junctions, now encircling the intersection point  $\mathcal{P}$ , as described above, or equivalently in M-theory, from the towers of M2-branes along  $\gamma_1$  and  $\gamma_2$ . Note that the situation is symmetric between both components of the Type II.a Kulikov model and in particular the string junctions on  $B^1$  and  $B^2$  are homologous in the junction lattice [65]. The total symmetry algebra of the system in the infinite distance limit is therefore

$$G_\infty = (\hat{E}_9 \oplus \hat{E}_9) / \sim, \tag{3.16}$$

where the quotient identifies the two imaginary roots  $\delta_i$  from each of the first and from the second factor.

These two towers of states are interpreted as two Kaluza-Klein towers in the dual heterotic string, signalling the decompactification of the two circles of the heterotic torus  $T_{\text{het}}^2$ . We will elaborate on this interpretation in detail in section 4.3. This identifies the Type II.a limits as decompactification limits from 8d to 10d. This is of course nothing but the well-known statement that stable degenerations (of Type II.a) realise large volume limits of the dual heterotic string [51–53]. Clearly, the gauge algebra in the decompactified theory is simply

$$G_{10d} = E_8 \oplus E_8, \tag{3.17}$$

the maximal *finite* Lie subalgebra of (3.16).

### 3.4 Type III.a Kulikov models as partial decompactification limits

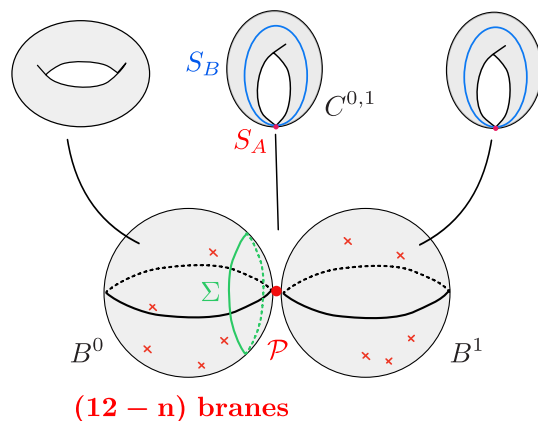
We now characterise the physics of F-theory on a K3 surface in an infinite distance limit of Kulikov Type III.a. In such a limit, the theory undergoes a partial decompactification to nine dimensions. This can be traced back to the appearance of one or two factors of an  $\hat{E}_{9-n}$  affine algebra for some values  $1 \leq n \leq 9$ , as we now explain from F-theory.

In models of Type III.a, at least one of the two end components of the degenerate Weierstrass model  $Y_0$  given in (3.2) is a rational elliptic surface, which we will often refer to as a  $dP_9$  surface. As reviewed in section 3.1 such configurations are obtained by suitable blowups of non-minimal singularities of the type (3.6) with  $m = n = 0$  and  $k > 0$ .<sup>14</sup> Generically, this gives rise to a chain of surfaces with rational elliptic surfaces on both ends,  $Y^0$  and  $Y^P$ . An additional tuning of the form (3.7) or (3.8) results in a configuration where only one of the end components is rational elliptic.

Let us first assume that there is only one rational elliptic end component, which we identify w.l.o.g. with the surface  $Y^0$ . Its neighbouring surface component  $Y^1$  is a degenerate fibration over  $B^1$  with fibers of Type  $I_{n_1>0}$  in codimension zero. In the sequel we will set  $n_1 =: n$ . The two curves  $B^0$  and  $B^1$  intersect at a point  $\mathcal{P}$ . The fiber over  $\mathcal{P}$  is the

---

<sup>14</sup>Recall that the configuration could be of other Kulikov types if  $k > 0$  was achieved by  $m > 0$  and  $n > 0$ . For details see [1].



**Figure 6.** Rational elliptic end component of a Kulikov Type III.a degeneration intersecting a neighbouring positive  $I_n$  component from the right.

intersection curve  $C^{0,1} = Y^0 \cap Y^1$ . This fiber  $C^{0,1}$  is a nodal curve, obtained by collapsing the  $(1, 0)$  cycle  $S_A$  of the elliptic fiber. See figure 6 for an illustration. If  $n > 1$ , then after blowing up the nodal point, the curve  $C^{0,1}$  is replaced within  $X_0$  by a cycle of  $n$  intersecting rational curves intersecting like the nodes of the affine Dynkin diagram of  $SU(n - 1)$

What is important for us is that the  $SL(2, \mathbb{Z})$  monodromy picked up upon encircling the intersection point  $\mathcal{P}$  along a 1-cycle  $\Sigma$  on  $B^0$  is represented by the matrix

$$M_{I_n} = \begin{pmatrix} 1 & -n - 1 \\ 0 & 1 \end{pmatrix}. \tag{3.18}$$

This implies that the  $dP_9$  surface  $Y^0$  must generically have  $(12 - n)$  singular fibers away from  $\mathcal{P}$ . The monodromy upon encircling the location of the associated  $(12 - n)$  7-branes is

$$M_{I_n}^{-1} = M_{\hat{E}_{9-n}}, \tag{3.19}$$

which identifies the 7-branes on  $Y^0$  away from the intersection point  $\mathcal{P}$  as the constituents of an  $\hat{E}_{9-n}$  configuration. The enhancement to  $\hat{E}_{9-n}$  occurs in the original Weierstrass model prior to blowup as a consequence of the non-minimal singularity (3.6), and the blowup partially separates the branes. We therefore claim that there is the following dictionary between affine  $\hat{E}_{9-n}$  algebras in F-theory and the geometry of the blowup of a Weierstrass model with non-minimal singularities:

$\hat{E}_{9-n}$ enhancements in F-theory	$\iff$	Rational elliptic end components of a Type III.a Kulikov Weierstrass model with $(\deg(f), \deg(g), \deg(\Delta)) = (4, 6, 12 - n)$ away from the other surface components
---	--------	---

where  $\text{deg}$  denotes the sum of vanishing orders. By analogy with our discussion of the Type II.a models in section 3.3, it is now clear that we can construct *one* independent elliptic transcendental 2-cycle  $\gamma$  by transporting the  $(1,0)$  cycle  $S_A$  in the elliptic fiber along the pinching 1-cycle  $\Sigma$  around the intersection point  $\mathcal{P}$ . This is possible because the  $(1,0)$  cycle in the elliptic fiber is left invariant by the monodromy  $M_{1_n}$  upon encircling  $\mathcal{P}$ . The calibrated volume of  $\gamma$  in the degenerate K3 surface  $X_0$  vanishes. Unlike for a Type II.a degeneration, the  $(0,1)$  cycle in the elliptic fiber is not left invariant by this monodromy. This explains why there is only a single, rather than two, homologically independent transcendental 2-torus of vanishing volume.

M2-branes wrapping  $\gamma$  give rise to a tower of BPS states in the seven-dimensional M-theory compactification, which uplifts to a tower of BPS states in the 8d F-theory. In the F-theory language this tower is identified with the tower of string junctions  $k\delta_1$ ,  $k \in \mathbb{Z}$ , where  $\delta_1$  is a  $(1,0)$  string that encircles the point  $\mathcal{P}$ . Equivalently, it can be viewed as a string junction encircling the  $(12-n)$  7-branes located on the base  $B^0$  away from the intersection point  $\mathcal{P}$ .

Compared to the Type II.a limit, we therefore encounter only a single tower of asymptotically massless BPS particles, corresponding to the single loop enhancement to build an  $\hat{E}_{9-n}$  algebra for  $n \geq 1$ . Such loop algebras are affine Lie algebras of Kac-Moody type. Furthermore, this tower of BPS states can be interpreted as Kaluza-Klein tower signalling a decompactification to 9d in the language of the dual heterotic string. We will confirm this interpretation by a careful match with the dual heterotic side in section 4.4.

If both end components  $Y^0$  and  $Y^P$  are dP<sub>9</sub> surfaces, the total non-abelian part of the symmetry algebra of the configuration is

$$G_\infty = H \oplus (\hat{E}_{n_0} \oplus \hat{E}_{n_P}) / \sim, \tag{3.20}$$

where the quotient indicates that the two string junctions associated with the imaginary roots of the two affine algebras are not independent but rather are identified. If only one end component is a dP<sub>9</sub> surface, the second affine factor does not appear. The factor  $H$  refers to the non-abelian symmetry algebra localised on all components with generic fibers of Type  $I_{k>0}$ . The non-abelian part of the gauge algebra in the 9d decompactification limit is the maximal finite Lie subalgebra of (3.20), which is given by

$$G_{9d} = H \oplus E_{n_0} \oplus E_{n_P}. \tag{3.21}$$

We will give further evidence for this picture in section 4.4.

There is a second difference as compared to the Kulikov Type II.a limit: in a Type III.a model, the intermediate surface components  $Y^i$ ,  $i = 1, \dots, P-1$  (and possibly one of the two end components as well), are  $I_{n_i}$  surfaces with  $n_i > 0$ . Since the enhancements at the intersection of the components are all of Kodaira Type  $I_k$ , the generic  $I_{n_i}$  fibers over the different components are mutually local with respect to one another. Therefore, the 10d axio-dilaton coupling vanishes along these components. Moreover there is a  $(1,0)$  string which is obtained from an M2-brane that wraps the vanishing  $(1,0)$  cycle in the fiber of the components  $Y^i$ , with  $n_i > 0$ . It becomes asymptotically tensionless in units of the 8d Planck scale, but only locally in the region of the degenerate compactification space.

Nonetheless, the limit is not an 8d weak coupling limit. First, as just mentioned, the  $(1, 0)$  string becomes tensionless only away from the rational elliptic end component(s), where the generic fiber is non-degenerate and hence the  $(1, 0)$  cycle is not contracted. This already shows that there does not exist a *globally* weakly coupled frame in which the  $(1, 0)$  string plays the role of the fundamental string. Second, the mass scale of the tower of states arising from the string junctions  $k\delta_1$  vanishes faster than the vanishing rate of the excitations of the (local)  $(1, 0)$  string. This is because the tower of string junctions is composed of asymptotically tensionless  $(1, 0)$  strings winding, in addition, around a vanishing cycle encircling  $\mathcal{P}$ . This subtle point justifies the interpretation as a decompactification, rather than as equidimensional weak coupling limit.

We note that the local weak coupling nature along the surface components away from the rational elliptic end components manifests itself also in the structure of Kodaira fibers over special points of the base. As reviewed in section 3.1, it was found in [1] that the only possible fiber enhancements on the surface components with generic  $I_{n>0}$  fibers are to singularities of  $A$ -type or  $D$ -type. These are the singularities which are compatible, at least locally, with weak coupling. On an end component with  $I_{n>0}$  fibers, the  $D_k$  enhancements in table 2 can furthermore occur also for values  $0 \leq k < 4$ : such enhancements are known to be absent, by Kodaira’s classification, on non-degenerate elliptic surfaces, corresponding to a non-perturbative obstruction to forming bound states of branes of the form  $A^k BC$  for  $0 \leq k < 4$ . In locally weakly coupled regions, on the other hand, no such obstruction should occur, and this is in perfect agreement with the existence of the corresponding  $D_k$ -type fibers on the weakly coupled surface components. Examples of this phenomenon can be found in [1].

Finally, in the next subsection we will provide an interpretation of the extra constraint (3.7) which distinguishes the Type III.a limits with one or two rational elliptic end surfaces.

### 3.5 Type III.b Kulikov models as weak coupling plus decompactification limits

As we now show, the physics of a Kulikov Type III.b limit is that of a weak coupling limit dual to a perturbative Type IIB orientifold, in combination with a large complex structure limit for the torus  $T_{\text{IIB}}^2$  on which the Type IIB theory is compactified. This leads to an asymptotic decompactification from 8d to 10d.

First, the codimension-zero  $I_{n_i>0}$  fibers in all surface components  $Y^i$  indicate the existence of a weakly coupled duality frame that is globally defined on the base  $B_0$  in the infinite distance limit. The  $I_{n_i}$  singularities in the fibers  $Y^i$  are induced by the shrinking of one-cycles, and since the  $I_{n_i}$  singularities of all components are mutually local with respect to each other (otherwise the components  $Y^i$  would intersect each other in fibers different from  $I_k$  type), they are in fact copies of the same one-cycle,  $S_A$ , that shrinks in all components. An M2-brane wrapped along  $S_A$  gives rise to a critical string in the uncompactified dimensions which is asymptotically tensionless as measured in 7d Planck units. This string uplifts to the weakly coupled Type IIB string in F-theory, whose tower of excitations is asymptotically tensionless compared to the 8d Planck scale. In addition, one finds a tower of massless states from the winding modes of this string along the 1-cycle  $\Sigma$  on

each base component  $B^i$  that shrinks at the intersection of two components. The fibration of  $S_A$  over  $\Sigma$  defines one transcendental elliptic curve  $\gamma$  of asymptotically vanishing volume. The same tower of asymptotically massless states can hence be equivalently understood in M-theory as the tower of M2-branes wrapping this elliptic curve  $\gamma$  multiple times. It is clear that the mass scale associated with this latter tower of particles asymptotes to zero faster than the excitations of the weakly coupled fundamental string from the M2-brane wrapped on  $S_A$  alone. This is because

$$\frac{M_{\text{str}}^2}{M_{11}^2} \sim \mathcal{V}_{11}(S_A) \rightarrow 0, \quad \frac{M_w}{M_{11}} \sim \mathcal{V}_{11}(S_A) \times \mathcal{V}_{11}(\Sigma) \sim \mathcal{V}_{11}(\gamma) \rightarrow 0, \quad (3.22)$$

such that

$$\frac{M_w}{M_{\text{str}}} \sim M_{\text{str}} \text{Vol}(\Sigma) \rightarrow 0, \quad (3.23)$$

where  $\mathcal{V}_{11}(\dots)$  measures volumes in units of the 11d Planck scale,  $M_{11}$ .

In fact, we will identify the tower associated with  $\gamma$  as the winding modes of the weakly coupled fundamental Type IIB string wrapped on an asymptotically vanishing one-cycle on  $T_{\text{IIB}}^2$ . The vanishing of the one-cycle indicates that the complex structure of  $T_{\text{IIB}}^2$  undergoes an infinite distance limit, in addition to the weak coupling limit  $\tau \rightarrow i\infty$ . Since the Kähler volume of the compactification space remains constant in units of the Type IIB string scale, such a large complex structure limit indicates a complete decompactification to 10d. In addition to the tower of winding states described above, there must thus arise a tower of supergravity Kaluza-Klein modes associated with the dual 1-cycle of  $T_{\text{IIB}}^2$  whose volume becomes inversely proportional to the one of the shrinking cycle. This tower of states is not visible as wrapped M2-branes in M-theory and needs to be inferred in a more indirect manner.

We can understand these statements more clearly in the language of the degenerating Weierstrass model as follows. Since all components of  $Y_0$  have generic fibers of Kodaira Type  $I_{n_i>0}$ , we can blow down all but one components to arrive at a (highly singular) family of Weierstrass models  $\hat{\mathcal{Y}}$ , which feature a degenerate central element  $\hat{Y}_0$  whose codimension-zero fibers are guaranteed to be of type  $I_{n>0}$ . Therefore its Weierstrass model can be written in the general form (3.14) for certain  $\eta$  and  $\rho$ . At the same time, the fact that the original degeneration leads to a multi-component central fiber  $Y_0$  implies the existence of non-minimal Kodaira fibers in  $\hat{Y}_0$ . They must then occur at the zeroes of  $h$ . This follows from the fact that at each of the four zeroes of  $h$ , the degree 8 function  $f$  and the degree 12 function  $g$  vanish to order 2 and 3, respectively, which leaves no room for additional zeroes of  $f$  and  $g$  at different points. A non-minimal Kodaira singularity at one of the zeroes of  $h$  in turn is only possible if at least two zeroes of  $h$  coincide on  $\hat{Y}_0$ . Since from a Type IIB perspective the zeroes of  $h$  are the locations of the O7-planes, this means that at least one pair of O7-planes coalesces in the limit. When this happens, one must now distinguish two qualitatively different situations:

- Generically, i.e., without further tuning of the parameters beyond the described collision of O7-planes via that of zeros of  $h$ , we will be taken away from a uniform weak coupling limit by introducing strongly coupled localised codimension-one objects



on the base. This manifests itself in such a way that after performing the necessary blowups, which bring us back to the Weierstrass family  $\mathcal{Y}$ , at least one of the end components of  $Y_0$  is not of  $I_n$  type with positive  $n$ , but rather is a rational elliptic surface. That is, the degeneration is of Type III.a. The rational elliptic component is the one which contains the location of the colliding O7-planes after the blowup and the axio-dilaton is generically of  $\mathcal{O}(1)$ . The situation is thus best described as a 9d decompactification limit of the dual heterotic string, as explained in section 3.4.

- In contrast, by a special tuning of the parameters of the Weierstrass model underlying the family  $\widehat{\mathcal{Y}}$ , we can remain at weak coupling despite the collision of the O7-planes, namely if the weak coupling limit is taken at a faster rate than the limit leading to the collision. This way, the blowup indeed results in a Type III.b degeneration, in which all surface components of  $Y_0$  have generic  $I_{n>0}$  fibers. The required tuning is precisely the additional condition (3.8).

The interpretation of such infinite-distance complex structure limits in terms of weakly coupled Type IIB strings is suggested by noting that the distance of the O7-planes measures the length of the 1-cycles of the Type IIB compactification space  $T_{\text{IIB}}^2$ . More precisely, the non-trivial 1-cycles on  $T_{\text{IIB}}^2$  correspond to the one-cycles encircling pairs of zeroes of the section  $h$  on the base  $B_0$  of  $\widehat{Y}_0$  introduced above. Colliding two of these zeroes is therefore equivalent to a complex structure degeneration of  $T_{\text{IIB}}^2$  for which a one-cycle shrinks. To the extent that the Kähler volume in Type IIB string units is unaffected by the complex structure degenerations, this leads to a decompactification to 10d, rather than to 9d.

#### 4 Infinite distance limits in the $E_7 \times E_8$ -Weierstrass model

In this section, we systematically analyse a representative class of infinite distance limits in the complex structure moduli space of an elliptic K3 surface from the point of view F-theory/ heterotic duality. We will obtain a clear physical interpretation of the infinite distance limits in the moduli space of F-theory via the explicitly known mirror map to the heterotic moduli in terms of Siegel modular forms. This illustrates and lends additional support to our claims of the previous sections concerning the asymptotic physics of the infinite distance limits.

For concreteness, we consider a one-parameter family (3.3) of K3 surfaces described by a Weierstrass model over base  $\mathbb{P}_{[s:t]}^1$  which at a generic point  $u \neq 0$  in moduli space gives rise to a non-abelian gauge algebra  $E_7 \times E_8$ . This model is sufficiently simple to allow for a systematic treatment, and at the same time exhibits all qualitative properties of the infinite distance limits of Kulikov Type II.a and III.a as described in the previous section.<sup>15</sup> We will construct these infinite distance limits by enhancing the exceptional gauge algebras to loop algebras  $\widehat{E}_{9-n}$ . This will be achieved by constructing non-minimal singularities in the Weierstrass model  $\mathcal{Y}$  corresponding to the vanishing orders (3.6) with  $m = 0$  or  $n = 0$ , i.e.,

$$\text{ord}_{\mathcal{Y}}(f, g, \Delta)|_{u=s=0} = (4 + m, 6, 12 + k) \quad \text{or} \quad (4, 6 + n, 12 + k), \quad (4.1)$$

---

<sup>15</sup>The  $E_7 \oplus E_8$  algebra is inconsistent with limits of Type II.b or III.b.

at a point on the base  $\mathbb{P}^1_{[s:t]}$ , which, here, is taken to be  $s = 0$ . We will see explicitly how degenerations with  $k = 0$  are of Type II.a and give rise to complete decompactifications of the 8d theory to 10d, as can be read off from the appearance of two loop algebras of Type  $\hat{E}_9$ . For  $k > 0$ , on the other hand, the degenerations will be of Type III.a and we will realise affine Lie algebras of type  $(\hat{E}_m \times \hat{E}_8)/\sim$  with  $m = 7, 8$ . The effective theories will in turn be interpreted as partial decompactifications to 9d by carefully translating the model into the dual heterotic frame via the formalism developed in [56] and studied further in [66, 67]. Moreover, depending on the parametrisation of the degeneration, we will find an intricate structure of various branches leading to different gauge algebras in the effective 9d theory.

After introducing the  $E_7 \times E_8$  Weierstrass model in section 4.1, we will explain how to systematically construct non-minimal singularities of the form (4.1) in section 4.2 and outline the structure of the resulting degenerate Kulikov Type II or Type III models. In sections 4.3 and 4.4 we will illustrate the general picture for a particular parametrisation of the degeneration. This will lead to different branches of the blowup theory, and we will analyse the gauge symmetry in the effective 9d theory both within F-theory and from the perspective of the dual heterotic theory.

#### 4.1 The $E_7 \times E_8$ -Weierstrass model and its heterotic dual

Our starting point is the family of Weierstrass models  $y^2 = x^3 + fxz^4 + gz^6$  over  $\mathbb{P}^1_{[s:t]}$  defined by the degree 8 and 12 functions<sup>16</sup>

$$f = t^3 s^4 (at + cs), \quad g = t^5 s^5 (ds^2 + bst + et^2). \quad (4.2)$$

For generic values of the complex parameters  $a, b, c, d, e$ , the vanishing orders of  $f, g$  and their discriminant  $\Delta = 4f^3 + 27g^2$  are given by

$$\text{ord}(f, g, \Delta)|_{t=0} = (3, 5, 9), \quad \text{ord}(f, g, \Delta)|_{s=0} = (4, 5, 10). \quad (4.3)$$

This identifies the non-abelian part of the gauge algebra in the 8d compactification of F-theory on this family of K3 surfaces as  $E_7 \oplus E_8$ , for generic values of the parameters. For special choices of parameters, the non-abelian gauge algebra can enhance further.

The complex parameters  $a, b, c, d, e$  are subject to the 2-parameter family of rescalings

$$(x, y, z, t, s, a, b, c, d, e) \sim (\lambda^{2\tau} x, \lambda^{3\tau} y, z, \lambda^\sigma t, s, \lambda^{4\tau-4\sigma} a, \lambda^{6\tau-6\sigma} b, \lambda^{4\tau-3\sigma} c, \lambda^{6\tau-5\sigma} d, \lambda^{6\tau-7\sigma} e) \quad (4.4)$$

for arbitrary  $\tau, \sigma \in \mathbb{C}^*$ . All-in-all we are therefore left with a moduli space of complex dimension three.

This moduli space can be most conveniently characterized in terms of the dual heterotic string compactification on  $T^2_{\text{het}}$ .<sup>17</sup> The duality map, which is essentially the mirror map, has been worked out in detail in [56] and was studied further in [66–68]. In the patch

<sup>16</sup>The parameters  $a, b, c, d, e$  depend on  $u$ , which we suppress, and for notational simplicity we also drop the subscript of  $f_u$  and  $g_u$ , as already mentioned.

<sup>17</sup>We will drop the subscripts from now on when referring to the quantities in the heterotic duality frame.

$e = 1$  of moduli space, the remaining four parameters of the K3 Weierstrass model can be identified as

$$a = -\frac{\psi_4(\Omega)}{48}, \quad b = -\frac{\psi_6(\Omega)}{864}, \quad c = -4\chi_{10}(\Omega), \quad d = \chi_{12}(\Omega), \quad e = 1. \quad (4.5)$$

Here  $\psi_k$  and  $\chi_m$  are Siegel modular forms<sup>18</sup> of genus  $g = 2$  of the indicated weight. They depend via

$$\Omega := \begin{pmatrix} T & V \\ V & U \end{pmatrix} \quad (4.6)$$

on the Kähler modulus  $T$ , complex structure modulus  $U$  and Wilson line modulus  $V$  of the dual heterotic string compactified on  $T^2$ . For later purposes, we also introduce the variables

$$q_T \equiv e^{2\pi iT}, \quad q_U \equiv e^{2\pi iU}, \quad q_V \equiv e^{2\pi iV}. \quad (4.7)$$

Another quantity that will be relevant for us is the discriminant factor

$$Q(a, b, c, d) \sim \frac{\chi_{35}^2}{\chi_{10}}, \quad (4.8)$$

where the cusp form  $\chi_{35}$  is the single odd generator of the ring  $M_*(\Gamma_2)$  of genus  $g = 2$  Siegel modular forms (A.3). The polynomial  $Q$  is defined as follows [56]: for generic values of the parameters  $a, b, c, d$ , the discriminant of the Weierstrass model takes the form

$$\Delta = t^9 s^{10} \Delta', \quad (4.9)$$

where  $\Delta'$  is a polynomial of degree five in  $[s : t]$ . The discriminant of this polynomial factors further into two polynomials

$$\text{Discr}(\Delta') = P(a, b, c, d) \times Q(a, b, c, d). \quad (4.10)$$

If  $P(a, b, c, d) = 0$ , the model acquires an additional Type II Kodaira fiber over some point on the base, while otherwise whenever  $Q(a, b, c, d) = 0$  has a single zero, there occurs an  $I_2$  singularity, which is characteristic of an  $SU(2)$  enhancement.<sup>19</sup> Explicitly, one finds that [56]

$$\begin{aligned} Q(a, b, c, d) = & -16a^6bc^3 - 216a^3b^3c^3 - 729b^5c^3 + 16a^5c^4 + 2700a^2b^2c^4 - 5625abc^5 \\ & + 3125c^6 + 16a^7c^2d + 216a^4b^2c^2d + 729ab^4c^2d - 3420a^3bc^3d + 6075b^3c^3d \\ & + 4125a^2c^4d + 888a^4c^2d^2 - 5670ab^2c^2d^2 - 13500bc^3d^2 + 16a^6d^3 + 216a^3b^2d^3 \\ & + 729b^4d^3 - 2592a^2bcd^3 + 16200ac^2d^3 + 864a^3d^4 - 5832b^2d^4 + 11664d^5. \end{aligned} \quad (4.11)$$

<sup>18</sup>Definitions and some of the most relevant properties are reviewed in appendix A.

<sup>19</sup>Such codimension one singularities are called Humbert surfaces, and if multiple roots of  $Q(a, b, c, d)$  coincide, higher codimension intersections of Humbert surfaces occur that are called Shimura curves or complex multiplication points. The nomenclature is not important for our purposes.

## 4.2 Systematics of affine enhancements in the $E_7 \times E_8$ -Weierstrass model

Our goal is to construct the possible infinite distance limits in the three-dimensional complex structure moduli space. With the help of two scaling relations it can always be arranged that the parameters  $(a, b, c, d, e)$  take finite values. In this scheme, the infinite distance limits that are not of weak coupling type<sup>20</sup> can be obtained by arranging for non-minimal Kodaira singularities, i.e. vanishing orders for  $(f, g, \Delta)$  of order  $(4, 6, 12)$  or beyond, at points in codimension one on the base. With all parameters kept finite, there are a priori three different ways of achieving this in the family (4.2) of Weierstrass models:

1. Non-minimality only at  $t = 0$  requires taking  $c \rightarrow 0$  and  $d \rightarrow 0$ , while keeping  $e \neq 0$ .
2. Non-minimality only at  $s = 0$  requires taking  $e \rightarrow 0$  while keeping  $(c, d) \neq (0, 0)$ .
3. Non-minimality both at  $s = 0$  and  $t = 0$  requires  $c \rightarrow 0$ ,  $d \rightarrow 0$  and  $e \rightarrow 0$ .

However, it is easy to see that due to the rescaling symmetry (4.4) these three types of limits can be *partially* mapped into one another, at least in certain regimes of moduli space. Note first that since we are interested in identifying relations between asymptotically massless towers, it is convenient to express the infinite distance limits as one-parameter limits. Consider then a general limit in which

$$c \sim u^\gamma, \quad d \sim u^\delta, \quad e \sim u^\epsilon \quad \text{with} \quad u \rightarrow 0, \quad \gamma, \delta, \epsilon \geq 0. \quad (4.12)$$

The two-parameter family (4.4) of rescalings contains the one-parameter family (for  $\lambda^\tau = \lambda^\sigma =: \lambda$ )

$$(a, b, c, d, e) \sim (a, b, \lambda c, \lambda d, \lambda^{-1} e). \quad (4.13)$$

Then taking  $\lambda = u^\epsilon$ , as long as

$$\gamma > \epsilon, \quad \delta > \epsilon, \quad (4.14)$$

we can go to a patch in which  $c \rightarrow 0$  and  $d \rightarrow 0$  while  $e$  stays finite and of order one in the limit  $u \rightarrow 0$ . Importantly, we still have the freedom to perform a rescaling which identifies

$$(a, b, c, d) \sim (\lambda^4 a, \lambda^6 b, \lambda^{10} c, \lambda^{12} d) \quad (4.15)$$

without leaving the patch  $e = 1$ , in agreement with the modular behaviour of the Siegel modular forms (4.5).

For concreteness, we will be considering regimes in moduli space which fall into this class. In the regime of small  $c$  and  $d$ , the combinations of Siegel modular forms that appear in (4.5) and (4.11) admit expansions in  $q_T$ ,  $q_U$  and  $q_V$  of the form (cf. appendix A)

$$\begin{aligned} c &\sim \chi_{10} \sim q_T q_U \left( -2 + q_V + \frac{1}{q_V} \right) + \dots, \\ d &\sim \chi_{12} \sim q_T q_U \left( 10 + q_V + \frac{1}{q_V} \right) + \dots, \\ 4a^3 + 27b^2 &\sim (\psi_4^3 - \psi_6^2) \sim q_T + q_U + \dots, \\ Q &\sim \chi_{35}^2 / \chi_{10} \sim q_T^3 q_U^3 (q_T - q_U)^2 q_V \left( q_V + \frac{1}{q_V} \right)^2 + \dots \end{aligned} \quad (4.16)$$

---

<sup>20</sup>Such limits occur by degenerating the elliptic fiber over generic points of the base, as systematised in [1].

The infinite series of subleading terms in  $\chi_{10}$ ,  $\chi_{12}$  as well as the terms in  $\psi_4$  and  $\psi_6$  underlying the quoted expression for  $\psi_4^3 - \psi_6^2$  can be ignored as long as

$$\frac{q_T}{q_V} \ll 1, \quad \frac{q_U}{q_V} \ll 1. \quad (4.17)$$

This condition is consistent with the condition for the modulus of Wilson line to lie within the fundamental domain given by

$$\text{Im}(U)\text{Im}(T) \geq (\text{Im}(V))^2. \quad (4.18)$$

Similarly, the subleading terms for  $\chi_{35}^2/\chi_{10}$  can be ignored as long as

$$\frac{q_T}{q_V^2} \ll 1, \quad \frac{q_U}{q_V^2} \ll 1. \quad (4.19)$$

In the regime of small  $q_V$ , the condition (4.19) is stronger than (4.17) and can therefore be violated within the fundamental domain. The expansion (4.16) of  $Q$  can only be applied if (4.19) holds.

After these preliminaries we now consider infinite distance limits in the patch where  $e = 1$  by taking  $c \rightarrow 0$  and  $d \rightarrow 0$ . As it turns out, the physically different infinite distance limits are distinguished by the relative vanishing order of  $c$  and  $d$  with respect to the vanishing of the combination  $4a^3 + 27b^2$ . This motivates considering the vanishing orders

$$4a^3 + 27b^2 \sim u^k, \quad c \sim u^n, \quad d \sim u^m \quad n \geq 1, m \geq 1, k \geq 0, \quad (4.20)$$

where the value of  $k$  coincides with that in (4.1). Models with such vanishing orders require

$$l = \min(n, m) \quad (4.21)$$

blowups to resolve the non-minimal singularity at  $t = 0$ .

As we will see, the physics at infinite distance can be classified as follows:

1. Limits with  $k = 0$  give rise to a Kulikov Type II degeneration of the elliptic K3 surface. This follows from the fact that in such cases after the blowup both end components contain 12 branes each, as expected for a  $\hat{E}_9$  configuration. Correspondingly, the expansion of modular forms implies that in this case,  $q_T \rightarrow 0, q_U = \mathcal{O}(1)$  or vice versa, which amounts to decompactification to 10 dimensions.
2. Limits with  $k \geq 1$  are of Kulikov Type III, corresponding to a  $\hat{E}_{8-N}$  configuration for  $N = 0$  or  $N = 1$  on the two end components. The expansion of the modular forms is consistent with the fact that  $q_T \rightarrow 0$  and  $q_U \rightarrow 0$  at a finite ratio, signalling a partial decompactification to 9 dimensions.

For otherwise generic coefficients, we will find Type III limits with

$$\text{Im}(T) = (l - 1)\text{Im}(U). \quad (4.22)$$

Here we made use of the duality symmetry to make sure that, without loss of generality,  $\text{Im}(T) \geq \text{Im}(U)$ . For each choice of  $l$ , different branches are obtained by special tunings

of the remaining coefficients, with the following properties: if  $n > m$ , the non-abelian part of the gauge algebra in 9 dimensions always includes an  $E_8 \oplus E_8$  factor, which can be enhanced to  $E_8 \oplus E_8 \oplus \text{SU}(2)$ . If  $n \leq m$ , the non-abelian part of the gauge group in 9 dimensions can be  $E_8 \oplus E_8$  or  $E_8 \oplus E_8 \oplus \text{SU}(2)$ , or  $E_7 \oplus E_8$  with possible enhancement to  $E_7 \oplus E_8 \oplus \text{SU}(2)$ .<sup>21</sup>

### 4.3 Type II degenerations

To illustrate the general picture, we consider a class of limits with  $n = m = 4$  for the parameters defined in (4.20). It turns out convenient to parametrise the coefficients appearing in (4.2) as

$$\begin{aligned} a &= a_0, & b &= \frac{2ia_0^{3/2}}{3\sqrt{3}}(1+y+b_1u)+b_2u^2+\mathcal{O}(u^3) \\ c &= -a_0(i\sqrt{3}+x)u^4+a_0pu^5+\mathcal{O}(u^6), & d &= a_0^{3/2}u^4+d_1u^5+\mathcal{O}(u^6), \end{aligned} \tag{4.23}$$

where the infinite distance limit is enforced by taking  $u \rightarrow 0$ .

As a warmup, we take all parameters  $b_1, a_0, p, x$  and  $y$  to be generic and of order one. At  $u = 0$ , the discriminant factorises as

$$\Delta|_{u=0} = t^{12}s^{10}\Delta'. \tag{4.24}$$

In particular, the Weierstrass vanishing orders ( $\text{ord}(f), \text{ord}(g), \text{ord}(\Delta)$ ) at  $t = 0$  are of type (4, 6, 12), indicating a non-minimal singularity in the fiber.

A Weierstrass model with only minimal singularities is obtained via a sequence of four blowups,

$$(t, e_i, x, y) \rightarrow (te_{i+1}, e_ie_{i+1}, xe_{i+1}^2, ye_{i+1}^3) \quad i = 0, 1, 2, 3, \tag{4.25}$$

where we have set  $e_0 = u$ . After each step the Weierstrass equation exhibits an overall factor of  $e_{i+1}^6$ , and to obtain the proper transform of the Weierstrass equation we divide by this factor and consider the resulting equation. This amounts to a rescaling  $(x, y, z, f, g) \sim (\lambda^2x, \lambda^3y, z, \lambda^4f, \lambda^6g)$  for  $\lambda = e_{i+1}$ , which does not affect the Calabi-Yau condition. The process terminates after four steps. The resulting fibration is a Weierstrass model  $Y_0$  which degenerates into a chain of five components,

$$Y_0 = \cup_{i=0}^4 Y^i. \tag{4.26}$$

Each component  $Y^i$  is in general degenerate elliptic fibration over a rational base curve

$$B^i = \{e_i = 0\}, \tag{4.27}$$

where we have defined  $e_0 = u$ . Here “degenerate” refers to the fact that the Weierstrass model may have Kodaira fibers of Type  $I_{n_i}$  over generic points of  $B^i$ , as explained generally in [1], but apart from this it has only minimal Kodaira fibers over special points of  $B^i$ .

---

<sup>21</sup>As will be explained at the end of section 4.4, the algebra of maximal enhancement  $G_{9d} = E_7 \oplus E_8 \oplus \text{SU}(3)$  occurs outside the patch of moduli space characterised by (4.14).

These codimension-one singularities can be resolved, but we keep the description as a Weierstrass model.

After the blowup, the Stanley-Reisner ideal of coordinates that are not allowed to vanish simultaneously contains in particular the elements

$$\{(e_4, e_2), (e_4, e_1), (e_4, u), (e_4, s), (e_3, t), (e_3, e_1), (e_3, u), (e_3, s), (e_2, u), (e_2, t), (e_2, s), (e_1, s), (e_1, t)(e_1, s)(u, t)\} \in \text{SRI}. \quad (4.28)$$

To analyse the geometry of the Weierstrass models  $Y^i$ , we restrict  $f$ ,  $g$  and  $\Delta$  to the individual components by setting  $e_i = 0$ , and using the Stanley-Reisner ideal (4.28) to set all coordinates that are not allowed to vanish on this locus equal to one. In particular, for the discriminant factor  $\Delta'$  in (4.24) this gives

$$\begin{aligned} \Delta'|_{e_4=0} &= e_3 P_2(e_3, t; x, a_0) + y Q_3(e_3, t; y, a_0) \\ \Delta'|_{u=0} &= e_1 P_1(e_1, s; x, a_0) + y Q_2(e_1, s; y, a_0) \\ \Delta'|_{e_i=0} &= 4a_0^3 y(2 + y), \quad i = 1, 2, 3, \end{aligned} \quad (4.29)$$

where  $P_i$  and  $Q_j$  are polynomials of indicated degrees in the first variables and we also indicate their dependence on the parameters of the model. From this we draw the following conclusions: the fiber over generic points of each base component  $B^i$  is of Kodaira Type  $I_0$ . The two end components  $Y^0$  and  $Y^4$  have 12 singular fibers away from the intersection with the other components and hence represent rational elliptic, or  $dP_9$ , surfaces. The component  $Y^4$  has a Type III\* singularity at  $t = 0$ , corresponding to an algebra  $E_7$ , and three more  $I_1$  singularities at generic points on  $B^4$ . Moreover,  $Y^0$  exhibits a Type II\* singularity at  $s = 0$ , corresponding to an algebra  $E_8$ , together with 2 more  $I_1$  singularities over generic points on  $B^0$ . The intermediate components  $Y^i$ ,  $i = 1, 2, 3$ , are trivial fibrations over the respective  $B^i$ , and all adjacent components intersect in an elliptic curve.

The degeneration is therefore an example of a Kulikov Type II model<sup>22</sup> with symmetry group

$$G_\infty = \hat{E}_9 \oplus \hat{E}_9 / \sim. \quad (4.30)$$

As reviewed in section 2, the string junctions associated with the imaginary roots  $\delta_1$  and  $\delta_2$  within  $\hat{E}_9$  can be interpreted as the Kaluza-Klein towers from the decompactification to 10 dimensions in the heterotic duality picture. Indeed, this can be seen explicitly by applying the duality map (4.5) in its expanded version (4.16). Up to order one coefficients, one finds

$$\chi_{10} \sim \chi_{12} \sim u^4, \quad \psi_4^3 - \psi_6^2 \sim 1, \quad \chi_{35}^2 / \chi_{10} \sim u^{12}, \quad (4.31)$$

which indicates a scaling

$$q_T \sim u, \quad q_U \sim 1, \quad q_V \sim 1. \quad (4.32)$$

This is of course precisely the behaviour  $T \rightarrow i\infty$  with  $U$  (and  $V$ ) of order one, for the dual heterotic moduli. It goes of course without saying that the gauge algebra in the 10d limit of the theory is  $G_{10d} = E_8 \oplus E_8$ , the gauge algebra of the 10d heterotic string, which corresponds to the maximal finite Lie algebra within (4.30).

---

<sup>22</sup>It is guaranteed that the model can be brought into the stable form of a Type II.a model [54], but we do not make this further step explicit here.

#### 4.4 Type III degenerations

To enhance the non-minimal singularity at  $t = 0$  further, we must arrange for  $4a^3 + 27b^2$  to vanish as  $u \rightarrow 0$ , which amounts to setting the parameter  $y = 0$  in (4.23). Now the Weierstrass vanishing orders at  $t = 0$  become  $(4, 6, 13)$  in the limit  $u \rightarrow 0$ , and a rich structure of physically inequivalent branches opens up. The non-minimal singularity can still be removed by the same blowup procedure as shown in (4.25). The crucial difference is that now the generic fiber of the intermediate surface components  $Y^i$ ,  $i = 1, 2, 3$ , is of Type  $I_{n_i > 0}$ . This can be inferred from the third line in (4.29), which shows that the discriminant along the intermediate  $B^i$  vanishes if  $y = 0$ . This is the hallmark of a Type III.a elliptic Kulikov model [1].

Let us now discuss a number of specializations:

**$b_1, x$  generic of  $\mathcal{O}(1)$ .** For generic values of the parameters  $b_1, a_0, p, x$  after the four blowups (4.25), the discriminant of the properly transformed Weierstrass model takes the form

$$\Delta = e_1 e_2 e_3 t^9 s^{10} \Delta', \quad (4.33)$$

with

$$\begin{aligned} \Delta'|_{e_4=0} &= a_0^3 \left( -12t^2 x + 3e_3 t \left( -3 + 8i\sqrt{3}x + 4x^2 \right) + 4e_3^2 \left( 3i\sqrt{3} + 9x - 3i\sqrt{3}x^2 - x^3 \right) \right) \\ \Delta'|_{e_3=0} &= -4a_0^3 (2b_1 e_4 + 3e_2 x) \\ \Delta'|_{e_2=0} &= -8a_0^3 b_1 \\ \Delta'|_{e_1=0} &= -4a_0^{3/2} \left( 2a_0^{3/2} b_1 u - 3i\sqrt{3}e_2 \right) \\ \Delta'|_{e_0=0} &= 3 \left( 9e_1 + 4i\sqrt{3}a_0^{3/2} s \right). \end{aligned} \quad (4.34)$$

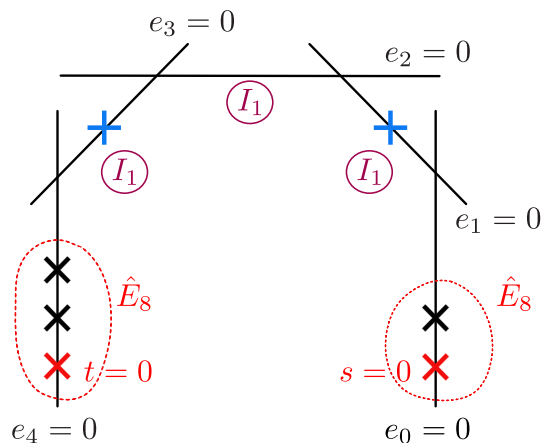
The geometry is depicted in figure 7. From (4.33) we infer that the intermediate surface components  $Y^i$ ,  $i = 1, 2, 3$ , have  $I_1$  singular fibers in codimension zero, i.e. over generic points of their base  $B^i$ . The end components  $Y^0$  and  $Y^4$  are  $dP_9$  surfaces intersecting the adjacent surfaces  $Y^1$  and  $Y^3$  in such an  $I_1$  fiber. Away from the respective intersection points, there are 11 singular fibers, distributed as a III\* Kodaira fiber ( $E_7$ ) at  $t = 0$  and 2  $I_1$  fibers over generic points of  $B^4$  and, respectively, as a II\* Kodaira fiber ( $E_8$ ) at  $s = 0$  along with one extra  $I_1$  fiber on  $B^0$ . One of the originally twelve 7-branes on each of the end components has moved to the adjacent component, that is to  $Y^1$  or  $Y^3$ , respectively.

Upon encircling the intersection point  $B^0 \cap B^1$  *clockwise* on  $B^0$ , and likewise the intersection  $B^3 \cap B^4$  on  $B^4$ , one picks up a monodromy

$$M_{I_1}^{-1} = M_{\hat{E}_8} = \begin{pmatrix} 1 & 1 \\ 0 & 1 \end{pmatrix}. \quad (4.35)$$

This transformation leaves the string junction  $\delta_1 = (1, 0)$  invariant, which can be identified with the imaginary root of the affine Lie algebra  $\hat{E}_8$ . This affine algebra is obtained upon colliding the 11 branes located on  $B^0$  and  $B^4$  away from the intersection points. The blowup has separated the 11 branes in such a way as to give rise only to minimal Kodaira





**Figure 7.** Kulikov Type III degeneration of  $E_7 \times E_8$  Weierstrass model (4.34) for generic values of the parameters  $b_1$  and  $x$ .

singularities in the fiber. The non-abelian part of the symmetry algebra of the theory in the limit is identified as

$$G_\infty = \hat{E}_8 \oplus \hat{E}_8 / \sim . \quad (4.36)$$

As explained in section 3.4,  $n$  copies of the string junction  $\delta_1$ , for  $n \in \mathbb{Z}$ , give rise to a tower of massless BPS particles in the effective theory. These play the role of a tower of Kaluza-Klein modes signalling the decompactification of the dual heterotic theory from 8d to 9d. Furthermore we claim that the non-abelian part of the gauge algebra in the effectively 9d theory attained in the limit is  $G_{9d} = E_8 \oplus E_8$ , the maximal non-abelian Lie algebra within (4.36).

These two statements can be checked explicitly with the help of the dictionary (4.5) and (4.16), which now gives

$$\chi_{10} \sim \chi_{12} \sim u^4, \quad \psi_4^3 - \psi_6^2 \sim u, \quad \chi_{35}^2 / \chi_{10} \sim u^{14}. \quad (4.37)$$

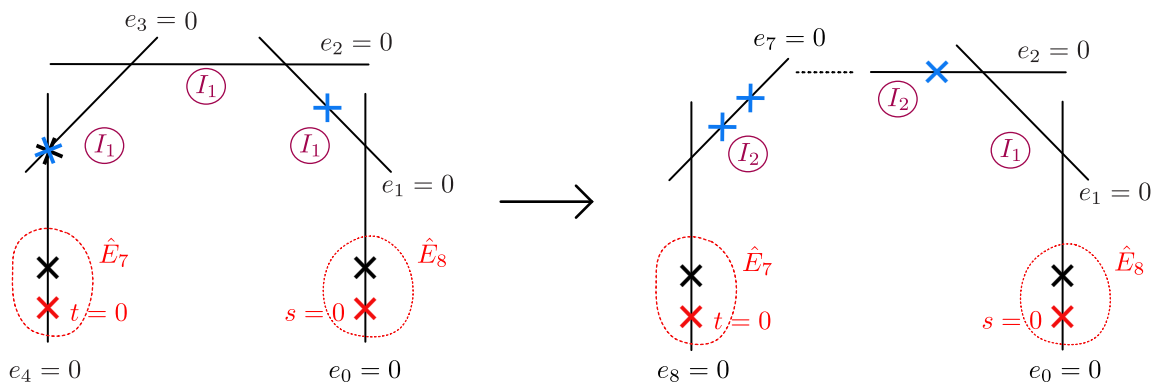
From the behaviour of  $\psi_4^3 - \psi_6^2$  in the limit under consideration, we infer that either  $q_T \sim u$  or  $q_U \sim u$ . W.l.o.g we take  $q_U \sim u$ . Then  $\frac{q_T}{q_V} \sim u^3$  by inspection of  $\chi_{10}$  and  $\chi_{12}$ . With these two scaling relations, the behaviour of  $\chi_{35}^2 / \chi_{10}$  shows that altogether

$$q_U \sim u, \quad q_T \sim u^3, \quad q_V = \mathcal{O}(1). \quad (4.38)$$

The limit hence corresponds to a partial decompactification to 9d, for which

$$\text{Im}(T) \sim 3 \text{Im}(U), \quad \text{Im}(T) \rightarrow \infty. \quad (4.39)$$

The vanishing of the heterotic Wilson line in 9 dimensions is reflected by  $V = \mathcal{O}(1)$ , which is realised in the present model. On this branch in moduli space, it is not possible to produce an additional  $SU(2)$  factor because this would require that either  $U = T$  or  $2V = T$  (or, after exchange of  $T$  and  $U$ ,  $2V = U$ ) in the dual heterotic model, which is incompatible with (4.38).



**Figure 8.** Kulikov Type III degeneration of  $E_7 \times E_8$  Weierstrass model (4.34) for generic value of the parameter  $b_1$  and  $x = 0$ . The left shows how for  $x = 0$  one 7-brane from  $B^4$  and one from  $B^3$  coalesce at the intersection. The right picture shows the result of a base change and blowups. The intermediate components over  $B^3$  up to  $B^6$  have generic  $I_2$  fibers and are not explicitly drawn.

Correspondingly in F-theory, generating an additional  $SU(2)$  factor would require the collision of two single branes: this is not possible in the Kulikov model realising the branch under consideration with generic values for the parameters  $b_1$  and  $x$ , because the two branes are localised on different components.

**$x = 0$ ,  $b_1$  generic of  $\mathcal{O}(1)$ .** A qualitative change occurs if we set the parameter  $x = 0$ : one 7-brane on the base component  $B^4$  and the 7-brane on the component  $B^3$  both wander towards the intersection point  $B^3 \cap B^4$ . See figure 8. This has two related effects: first, at the collision point, it seems at first sight that an additional  $SU(2)$  gauge symmetry might arise. Second, according to our general logic the singularity at  $t = 0$  in the limit  $u = 0$  is of type  $\hat{E}_7$ , since the degrees of  $(f, g, \Delta)$  decrease to  $(4, 6, 10)$  away from the intersection point.

Concerning the potential  $SU(2)$  enhancement, however, we note that the intersection locus  $B^3 \cap B^4$  is a nodal singularity of the base and hence the physics interpretation of the 7-branes thereon is a priori obscure. To obtain a better understanding we go back to the degenerate Weierstrass model prior to the blowups and perform a base change  $u \rightarrow u^2$ , as explained generally in [1]. Such a rescaling of the parameter  $u$  cannot change the interpretation of the physics. Removing the non-minimal singularities in the fiber of the model after base change now requires a total of 8 blowups with blowup coordinates  $e_i$ ,  $i = 1, \dots, 8$ . One obtains a chain of 9 degenerate Weierstrass models,  $Y_0 = \cup_{i=0}^8 Y^i$ , with  $I_{n_i}$  fibers over generic points of the following form:

$$I_0 - I_2 - I_2 - I_2 - I_2 - I_2 - I_2 - I_1 - I_0. \tag{4.40}$$

Here the left end component  $Y^8$  (with base  $B^8 : \{e_8 = 0\}$ ) is intersected by  $t = 0$  and the right end component  $Y^0$  by  $s = 0$ . The base change resolves the relative position of two 7-branes which seem to coalesce for  $x = 0$ : in the new model, both branes are located at two generic points within the base component  $B^7$  given by the zeroes of

$$9e_6^2 + 8b_1e_8^2 = 0. \tag{4.41}$$

This shows that as long as  $b_1 \neq 0$ , the two branes cannot coincide and therefore  $x = 0$  with  $b_1 \neq 0$  does not lead to an additional  $SU(2)$  factor.

We conclude that for  $x = 0$  the symmetry group in the Kulikov model under consideration is

$$G_\infty = (\hat{E}_7 \oplus \hat{E}_8) / \sim \tag{4.42}$$

and the non-abelian part of the gauge group in the partial decompactification limit to 9d is  $G_{9d} = E_7 \times E_8$ .

This behaviour is consistent with the heterotic dual model: the scaling (4.37) of the parameters of the Weierstrass model remains unchanged by setting  $x = 0$  except for

$$Q \sim \chi_{35}^2 / \chi_{10} \sim q_T^3 q_U^3 (q_T - q_U)^2 q_V \left( q_V + \frac{1}{q_V} \right)^2 \sim u^{15}. \tag{4.43}$$

Naively, this is compatible with the scaling

$$q_U \sim u, \quad \frac{q_T}{q_V} \sim u^3, \quad q_V \sim u^{1/2}, \tag{4.44}$$

from which one would conclude that  $2V = U$  (corresponding to an  $SU(2)$  enhancement), but this is too quick: for this solution the convergence condition (4.19) is badly violated and the expansion (4.43) breaks down. Hence there is no indication of an  $SU(2)$  enhancement on the heterotic side either and we are left with the non-abelian part of the 9d gauge algebra given by

$$G_{9d} = E_7 \oplus E_8. \tag{4.45}$$

**$b_1 = 0$ ,  $x = \mathcal{O}(1)$  and generic.** If, by contrast, we set  $b_1 = 0$ , while keeping  $x = \mathcal{O}(1)$  and non-zero, we enter a new branch because the vanishing order of the discriminant (4.33) along the component  $e_2 = 0$  increases to

$$\Delta = e_1 e_2^2 e_3 t^9 s^{10} \Delta' \tag{4.46}$$

with

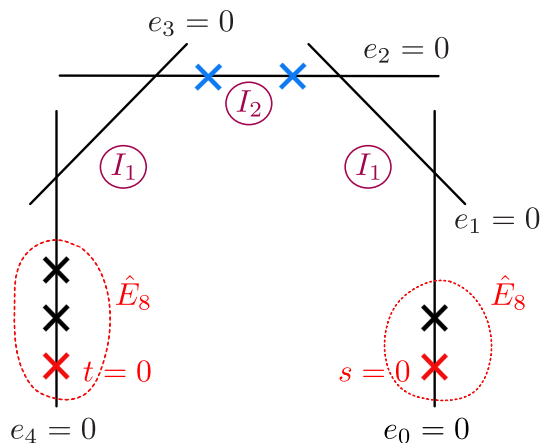
$$\begin{aligned} \Delta'|_{e_4=0} &= a_0^3 \left( -12t^2 x + 3e_3 t \left( -3 + 8i\sqrt{3}x + 4x^2 \right) + 4e_3^2 \left( 3i\sqrt{3} + 9x - 3i\sqrt{3}x^2 - x^3 \right) \right), \\ \Delta'|_{e_3=0} &= -12a_0^3 x, \\ \Delta'|_{e_2=0} &= 12ia_0^{3/2} \left( \sqrt{3}b_2 e_1 e_3 + ia_0^{3/2} e_1^2 x + \sqrt{3}e_3^2 \right), \\ \Delta'|_{e_1=0} &= 12i\sqrt{3}a_0^{3/2}. \end{aligned} \tag{4.47}$$

The 7-brane from the component  $e_3 = 0$  has moved onto the component  $e_2 = 0$ , see figure 9. This is reflected in a change of vanishing orders of the modular forms to

$$\chi_{10} \sim \chi_{12} \sim u^4, \quad \psi_4^3 - \psi_6^2 \sim u^2, \quad \chi_{35}^2 / \chi_{10} \sim u^{16}. \tag{4.48}$$

Such behaviour requires that the heterotic variables scale as

$$q_T \sim u^2, \quad q_U \sim u^2, \quad q_V = \mathcal{O}(1). \tag{4.49}$$



**Figure 9.** Kulikov Type III degeneration of  $E_7 \times E_8$  Weierstrass model (4.34) for generic value of the parameter  $x$  and  $b_1 = 0$ .

Again,  $V = \mathcal{O}(1)$  implies that the Wilson line in 9 dimensions is ineffective and the gauge algebra is enhanced to  $G_{9d} = E_8 \oplus E_8$  in the 9-dimensional limit.

The only way to achieve an additional gauge enhancement along this branch is if the two roots of  $\Delta'|_{e_2=0}$  coincide, which occurs for

$$x = -\frac{i\sqrt{3}b_2^2}{4a_0^{3/2}}, \tag{4.50}$$

leading to the (non-abelian) symmetry group

$$G_\infty = \text{SU}(2) \oplus (\hat{E}_8 \oplus \hat{E}_8)/\sim \implies G_{9d} = \text{SU}(2) \oplus E_8 \oplus E_8. \tag{4.51}$$

Since the two coinciding 7-branes belong to the two different groups of 12 branes on K3, each associated with a full  $\hat{E}_9$  loop algebra, we expect such enhancement to correspond to the locus where, in heterotic coordinates,  $T = U$ . This can be achieved on the branch under consideration, where  $q_T \sim q_U \sim u^2$ . By contrast, an enhancement by taking  $2V = T$  cannot be obtained on this branch, where  $V$  and  $T$  are separated by two orders in  $u$ .

The vanishing order of the discriminant polynomial on the branch with  $b_1 = 0$  is

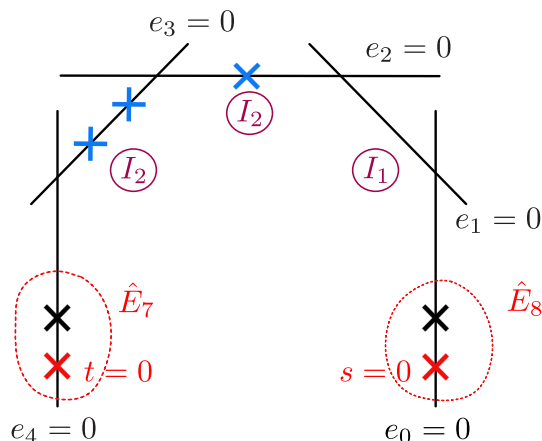
$$Q \sim \frac{\chi_{35}^2}{\chi_{10}} \sim x^2 u^{16} \left( 9a_0^{3/2} b_2^2 - 12i\sqrt{3}a_0^3 x - 2i\sqrt{3}a_0^{3/2} b_2^2 x - 8a_0^3 x^2 + \mathcal{O}(u) \right). \tag{4.52}$$

The polynomial in brackets vanishes for

$$x = -\frac{i\sqrt{3}b_2^2}{4a_0^{3/2}} \quad \text{or} \quad x = -\frac{i3\sqrt{3}}{2}. \tag{4.53}$$

The first solution indeed corresponds to the  $\text{SU}(2)$  enhancement locus found above. We interpret the vanishing orders as indicative of the asymptotic scaling

$$q_T \sim u^2, \quad q_U = q_T + \mathcal{O}(u^{5/2}), \quad q_V = \mathcal{O}(1). \tag{4.54}$$



**Figure 10.** Kulikov Type III degeneration of  $E_7 \times E_8$  Weierstrass model (4.34) for  $b_1 = 0$  and  $x = 0$ .

**Branch  $b_1 = 0$ ,  $x = 0$ .** Finally, a novel branch opens up for  $b_1 = 0$  and  $x = 0$ . The discriminant becomes

$$\Delta = e_1 e_2^2 e_3^2 t^9 s^{10} \Delta' \quad (4.55)$$

with

$$\begin{aligned} \Delta'|_{e_4=0} &= 3ia_0^3 (4\sqrt{3}e_3 + 3it), \\ \Delta'|_{e_3=0} &= -3a_0^{3/2} (3a_0^{3/2} e_2^2 - (4i\sqrt{3}d_1 + 4a_0^{3/2} p) e_2 e_4 - 4i\sqrt{3}b_2 e_4^2), \\ \Delta'|_{e_2=0} &= 12i\sqrt{3}a_0^{3/2} (b_2 e_1 + e_3), \\ \Delta'|_{e_1=0} &= 12i\sqrt{3}a_0^{3/2}, \\ \Delta'|_{u=0} &= 3 (4i\sqrt{3}a_0^{3/2} + 9e_1). \end{aligned} \quad (4.56)$$

The geometry is depicted in figure 10. Consider first the surface component  $Y^4$ . Apart from the  $E_7$  singularity at  $t = 0$ , an additional 7-brane is located at  $4\sqrt{3}e_3 + 3it = 0$ . The intersection curve  $Y^4 \cap Y^3$  is an  $I_2$  fiber, as required for consistency of the rational surface  $Y^4$ , which exhibits a brane content of total monodromy  $M_{I_2}^{-1} = M_{\hat{E}_7}$  away from the intersection locus. The two additional 7-branes (which would enhance  $\hat{E}_7$  further to  $\hat{E}_9$ ) are located at two points of  $B^3$ , given by the vanishing locus of the polynomial  $\Delta'|_{e_3=0}$ .

Similarly, on  $Y^0$  we recognise an  $E_8$  singularity at  $s = 0$  along with one more  $I_1$  fiber at a generic position given by  $4i\sqrt{3}a_0^{3/2}s + 9e_1 = 0$ . Consistently with the total monodromy, the intersection  $Y^0 \cap Y^1$  is an  $I_1$  fiber. The 7-brane which would enhance  $\hat{E}_8$  to  $\hat{E}_9$  is located on  $B^2$  at  $b_2 e_1 + e_3 = 0$ .

Let us now analyse the potential  $SU(2)$  enhancements from the point of view of the Weierstrass model. An obvious possibility occurs when the two 7-branes on the base component  $B^3$  coalesce, i.e. when the roots of the polynomial  $\Delta'|_{e_3=0}$  coincide. By inspection of  $\Delta'|_{e_3=0}$ , this happens for

$$3i\sqrt{3}a_0^{3/2}b_2 - 3d_1^2 + 2i\sqrt{3}a_0^{3/2}d_1p + a_0^3p^2 = 0. \quad (4.57)$$

From the previous discussion it is clear that the resulting  $SU(2)$  factor embeds into one of the two perturbative  $E_8$  factors, i.e. the  $SU(2)$  enhancement is the result of a Wilson line breaking  $E_8 \rightarrow E_7 \oplus SU(2)$ , leading altogether to

$$G_{9d} = E_7 \oplus E_8 \oplus SU(2). \tag{4.58}$$

This locus must correspond to the solution  $2V = T$  (or, after exchange symmetry,  $2V = U$ ) on the heterotic side. Note that the scaling of the modular forms

$$\begin{aligned} \chi_{10} \sim \chi_{12} \sim u^4, \quad \psi_4^3 - \psi_6^2 \sim u^2(b_2 + b_3u + \mathcal{O}(u^2)), \\ \chi_{35}^2/\chi_{10} \sim u^{18}b_2^2 \left( 3i\sqrt{3}a_0^{3/2}b_2 - 3d_1^2 + 2i\sqrt{3}a_0^{3/2}d_1p + a_0^3p^2 + \mathcal{O}(u) \right). \end{aligned} \tag{4.59}$$

takes us out of the domain of convergence (4.19) of the expansions. This impedes a simple comparison with the heterotic dual theory.

The second possible  $SU(2)$  enhancement naively occurs if we set  $b_2 = 0$ . On this locus, one brane on the base component  $B^3$  and the brane on  $B^2$  each move towards the intersection point of both base components. However, we must again be careful in interpreting this configuration. A base change  $u \rightarrow u^2$  followed by eight blowups, similar to the one underlying the configuration (4.40), show that for  $b_2 = 0$  no actual gauge enhancement occurs.

The same conclusion holds also for the putative intersection of both special  $SU(2)$  loci, i.e. for

$$b_2 = 0, \quad -3d_1^2 + 2i\sqrt{3}a_0^{3/2}d_1p + a_0^3p^2 = 0. \tag{4.60}$$

While naively one would conclude an enhancement to  $E_8 \oplus E_7 \oplus SU(3)$ , this is an artefact of the collision of the three branes at the intersection point of two base components. A base change  $u \rightarrow u^6$ , followed by 24 blowups, reveals that for this special choice of parameters the gauge algebra remains  $G_{9d} = E_8 \oplus E_7$ , with no additional enhancement.

**Maximal enhancement  $G_{9d} = E_7 \oplus E_8 \oplus SU(3)$ .** The picture just described and the pattern of non-abelian enhancements do not change qualitatively by further tuning the vanishing orders of the coefficient  $b$  in (4.23) to higher order in  $u$ . This raises the question if the maximal enhancement  $G_{9d} = E_7 \oplus E_8 \oplus SU(3)$  can be achieved as an infinite distance limit of F-theory. This is possible, but in a regime of moduli space outside the realm of (4.14). To find a parameterisation of the limit leading to  $G_{9d} = E_7 \oplus E_8 \oplus SU(3)$ , we start from the Weierstrass model (4.2) and first tune the coefficients such as to realise an  $I_3$  singularity at a generic point  $\mathcal{P}$  away from  $s = 0$  or  $t = 0$ . To be concrete, let us take  $\mathcal{P} = \{s - t = 0\}$ . Then the  $I_3$  singularity is obtained if we take for instance

$$\begin{aligned} a &= \left(\frac{-3}{16}\right)^{1/3} (1 - 4u), & c &= \left(\frac{-3}{16}\right)^{1/3} 4u, \\ d &= u + u^2, & b &= \frac{1}{6} - u - 2u^2, & e &= u^2. \end{aligned} \tag{4.61}$$

In the limit  $u \rightarrow 0$  a non-minimal singularity with  $\text{ord}(f, g, \Delta)|_{s=u=0} = (4, 6, 13)$  arises. As it turns out, to achieve a configuration with no further non-minimalities, one must first

perform a base change  $u \rightarrow u^2$ , followed by 4 blowups beginning at  $s = u = 0$  and 2 more blowups beginning at  $t = u = 0$ . This leads to a chain of 7 surface components with generic fibers of the form

$$I_0 - I_1 - I_2 - I_3 - I_4 - I_2 - I_0, \tag{4.62}$$

where  $t = 0$  lies on the right end component and  $s = 0$  on the left. The  $I_4$ -surface contains the  $I_3$  singularity in the fiber over a special point of its base. Altogether the geometry realises the enhancement  $G_\infty = \text{SU}(3) \oplus (\hat{E}_7 \oplus \hat{E}_8)/\sim$ , which is interpreted as a gauge  $G_{9d} = E_7 \oplus E_8 \oplus \text{SU}(3)$  in the 9d decompactification limit.

## 5 Maximal non-abelian gauge algebras in 9d from Type III.a Kulikov models

As an immediate application of the classification of Type III.a Kulikov models in [1] and their physical interpretation given in section 3.4, we can determine the maximal non-abelian gauge algebras in the nine-dimensional theories that are obtained as decompactification limits at infinite distance in the complex structure moduli space. As a consistency check, we will find a perfect match with the results of [58, 59] (and the previous analysis in [57]), which analyse the maximal non-abelian enhancements in heterotic string theory compactified on  $S^1$ . Note that throughout this work, we are considering F-theory on K3 surfaces without any non-trivial gauge background turned on, which would reduce the rank of the theory.<sup>23</sup> Hence the total rank in the original eight-dimensional setting is  $r = 18$ . It decreases to  $r = 17$  in the nine-dimensional decompactification limit since one of the abelian gauge groups in eight dimensions corresponds to the KK  $U(1)$ .

### 5.1 A-series and D-series

The decompactification limits of F-theory to nine dimensions correspond to two kinds of Kulikov Type III.a degenerations: either both end surface components  $Y^0$  and  $Y^P$  are  $dP_9$  surfaces with  $(12 - n_1)$  and  $(12 - n_{P-1})$  7-branes, respectively, localised away from the intersection with the neighbouring surface components; or  $Y^0$  is a  $dP_9$  surface and  $Y^P$  is an  $I_{n>0}$  surface with 2  $D$ -type singularities and possibly additional  $A$ -type singularities.

In the first case, the non-abelian part of the symmetry algebra is

$$G_\infty = H \oplus (\hat{E}_n \oplus \hat{E}_m)/\sim, \tag{5.1}$$

where  $H$  refers to a direct sum of  $A$ -type Lie algebras and the ranks of the involved  $E$ -type algebras are determined as  $n = 9 - n_1$  and  $m = 9 - n_{P-1}$ . Indeed, we know from the discussion of the Type III.a models that the codimension-two singularities on the intermediate surface components  $Y^i$  must all be of  $A$  type. To determine the maximal possible non-abelian enhancements in this class of models, we merely need to note that out

---

<sup>23</sup>Such rank-reduced setups have been considered recently from the viewpoint of the Swampland program in [69–72].

of the total of 24 7-branes (or singular fibers) of the original K3 surface,  $(n + 3)$  constitute the first  $\hat{E}_n$  factor and  $(m + 3)$  the second  $\hat{E}_m$ . This identifies

$$G_\infty = A_{17-n-m} \oplus (\hat{E}_n \oplus \hat{E}_m) / \sim \tag{5.2}$$

as the maximal non-abelian symmetry algebra of a Type III.a model, for which the remaining  $18 - n - m$  branes all coincide to form the  $A_{17-n-m}$  configuration. Such configurations realise the maximal enhancement pattern

$$G_{9d}^{\max} = A_{17-n-m} \oplus (E_n \oplus E_m), \quad 0 \leq n, m \leq 8, \quad n \neq 2, m \neq 2 \tag{5.3}$$

in the asymptotic nine dimensional theory. The reason why we have excluded the values  $n, m = 2$  is because these do not yield a *maximal* enhancement. Indeed, recall from (2.10) that  $\hat{E}_2$  yields a gauge algebra  $A_1 + u(1)$  in 9d, whose non-abelian component agrees with the gauge algebra associated with  $\hat{E}_1$ . Therefore the non-abelian gauge algebra of the configuration with  $n = 2$  can be embedded into one with  $n = 1$ .

It remains to analyse the second kind of Type III.a models, where the end component  $Y^0$  is a  $dP_9$  surface with symmetry algebra  $\hat{E}_k$  with  $k = 9 - n_1$  and the end component  $Y^P$  has generic  $I_{n_P > 0}$  fibers. The maximal non-abelian enhancements occur if both  $D$ -type algebras from  $Y^P$  and the extra  $A$ -type factors from the components different from  $Y^0$  combine into a single  $D$ -type algebra. Maximality in particular requires that one of the  $D$ -type configuration consists only of a pair of branes of type  $B$  and  $C$ , in the notation of section 2, hence realising the trivial algebra  $D_0$ . Counting branes thus yields for the maximal non-abelian symmetry algebras:

$$G_\infty = D_{17-k} \oplus \hat{E}_k. \tag{5.4}$$

This realises the second series for the maximal 9d gauge algebras that can be realized via geometry:

$$G_{9d}^{\max} = D_{17-k} \oplus E_k, \quad 0 \leq k \leq 8, k \neq 2. \tag{5.5}$$

Recalling that  $E_1 = A_1$ ,  $E_2 = A_1 \oplus u(1)$ ,  $E_3 = A_2 \oplus A_1$ ,  $E_4 = A_4$ ,  $E_5 = D_5$ , one can check explicitly that the 44 inequivalent configurations of the  $A$ -series (5.3) and the  $D$ -series (5.5) generate the complete list of maximal non-abelian gauge symmetries that can be realized by the heterotic string compactified on  $S^1$  [58].

We note in passing that the same conclusions can also be reached by taking the realisation of the affine algebras  $\hat{E}_k$  of section 2 as the starting point and explicitly constructing the possible maximal brane configurations whose total  $SL(2, \mathbb{Z})$  monodromy multiplies to unity.

It is also clear that the series of maximal  $A$ -type enhancements can be constructed explicitly by a generalisation of the procedure that was exemplified for the special case  $G_\infty = A_2 \oplus (\hat{E}_7 \oplus \hat{E}_8) / \sim$  at the end of the previous section. Instead of spelling this out for the other elements of the  $A$ -series, let us now sketch the realisation of the maximal  $D$ -type enhancements, which engineers the second type of Tye III.a Kulikov models with only one rational elliptic end component.



## 5.2 Maximal $D$ -series: construction

The second maximal non-abelian series (5.5) with a  $D_{17-n} \oplus \hat{E}_n$  enhancement can be realised along the following lines:

1. The starting point is a singularity with Weierstrass vanishing orders  $\text{ord}(f, g, \Delta)|_{t=0} = (2, 3, 19 - n)$ , realising a  $D_{17-n}$  enhancement at  $t = 0$ .
2. In a second step, one engineers a singularity with non-minimal vanishing orders

$$\text{ord}(f, g, \Delta)|_{s=0} = (4, 6, *) \tag{5.6}$$

in an infinite distance limit parametrised as  $u \rightarrow 0$  such that at the same time the fiber over a *generic* point degenerates to an  $I_k$  singularity. This requires a degeneration of the form (3.7). The infinite distance limit then realises a (local, but not global) weak coupling limit in which the 10d string coupling vanishes asymptotically at least away from a non-minimal singularity.

3. The non-minimal singularity at  $s = 0$  in the limit  $u \rightarrow 0$  is removed by one or several blowups, starting at  $s = u = 0$ .

After the blowups, the point  $s = 0$  lies on the base of a rational elliptic component surface. The total degree of  $(f, g, \Delta)$  on this component away from the intersection point with the other surface components is  $(4, 6, 3 + n)$ . This indicates that the blowups have separated the branes associated with a  $\hat{E}_n$  singularity in the limit  $u \rightarrow 0$ . The  $\hat{E}_n$  configuration contributes an asymptotically massless tower of BPS states which we interpret as the Kaluza-Klein tower for the partial decompactification to 9d, as before.

4. The component containing  $t = 0$ , on the other hand, is not a rational elliptic surface because the elliptic fiber degenerates over every point of the base component. This behaviour is inherited from the  $I_k$  degeneration over generic points of the K3 surface prior to the blowup. For a maximal symmetry algebra, in addition to the overall degeneration, the component should exhibit the  $(2, 3, 19 - n)$  singularity at  $t = 0$  as well as one more  $D$ -type singularity with vanishing orders  $(2, 3, 2)$  at a generic position away from  $t = 0$ . As explained at the end of section 3.4, the latter singularity, which is a  $D_0$  fiber, cannot occur at finite distance for an elliptic K3, but is realisable here due to the local weak coupling nature.

Let us spell this out in more detail for the example of an asymptotic  $G_\infty = D_{16} \oplus \hat{E}_1$  algebra, which realises the maximal non-abelian gauge algebra  $G_{9d} = D_{16} \oplus A_1$  in the 9d infinite distance limit. Conveniently, the  $D_{16}$  singularity at  $t = 0$  can be engineered as a global Tate model [73], which is a parametrisation of the functions  $f$  and  $g$  of the Weierstrass model as

$$f = -\frac{1}{48}(\beta_2^2 - 24\beta_4), \quad g = -\frac{1}{864}(-\beta_2^3 + 36\beta_2\beta_4 - 216\beta_6) \tag{5.7}$$

for

$$\beta_2 = a_1^2 + 4a_2, \quad \beta_4 = a_1a_3 + 2a_4, \quad \beta_6 = a_3^2 + 4a_6. \quad (5.8)$$

Each  $a_n$  is a section of the line bundle  $K^{-n}$ , where by  $K$  we denote the canonical bundle of the base. In the present case, this means that  $a_n$  is a polynomial of degree  $2n$  in the homogeneous coordinates  $[s : t]$  of the base  $\mathbb{P}^1$  of the elliptic K3, which therefore can be parametrised as

$$a_n = \sum_{i=0}^{2n} a_{n,i} t^i s^{2n-i}. \quad (5.9)$$

A  $D$ -type singularity at  $t = 0$  arises if one specialises the  $a_n$  such that they vanish to a certain order at  $t = 0$ , concretely [73]

$$\text{ord}(a_1, a_2, a_3, a_4, a_6)|_{t=0} = \begin{cases} (1, 1, k+1, k+1, 2k+1) & \text{for } D_{2k+2} \\ (1, 1, k, k+1, 2k+1) & \text{for } D_{2k+1} \end{cases}. \quad (5.10)$$

Applied to  $D_{16}$ , this means that we must set

$$a_{1,0} = 0, \quad a_{2,0} = 0, \quad a_3 = 0, \quad a_4 = a_{4,8}t^8, \quad a_6 = 0, \quad (5.11)$$

which indeed leads to vanishing orders  $\text{ord}(f, g, \Delta)|_{t=0} = (2, 3, 18)$  as required for  $D_{16}$ .

In the next step we engineer a non-minimal singularity with vanishing orders  $\text{ord}(f, g, \Delta)|_{s=0} = (4, 6, *)$  in an infinite distance limit of the form (3.7). To this end we first parametrise the remaining Tate monomials as

$$a_{i,j} = \sum_{k \geq 0} a_{i,j}^{(k)} u^k \quad (5.12)$$

and tune

$$a_{2,3}^{(0)} = -\frac{1}{2}a_{1,1}^{(0)}a_{1,2}^{(0)}, \quad a_{2,4}^{(0)} = -\frac{1}{4}(a_{1,2}^{(0)})^2, \quad a_{4,8}^{(0)} = 0. \quad (5.13)$$

With this prescription,

$$f|_{u=0} = -\frac{1}{48}t^2s^4p_1(s,t)^2, \quad g|_{u=0} = \frac{1}{864}t^3s^6p_1(s,t)^3 \quad (5.14)$$

for a linear polynomial  $p_1(s,t) = 4a_{2,1}s + ((a_{1,1}^{(0)})^2 + 4a_{2,2}^{(0)})t$ , while the discriminant takes the form

$$\Delta = -\frac{1}{16}(a_{4,8}^{(1)})^2 t^{18} u^2 \tilde{\Delta}'. \quad (5.15)$$

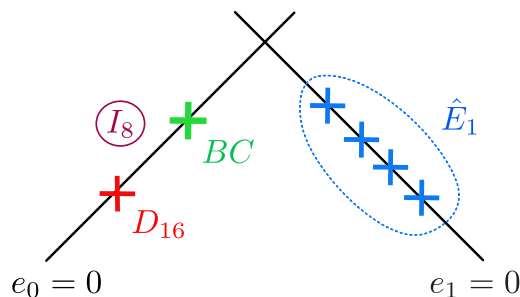
Note that in the limit  $u \rightarrow 0$ , the fiber over a generic point on the base degenerates into an  $I_2$  fiber, as intended.

The non-minimal singularity at  $s = 0$  in the limit  $u \rightarrow 0$  can be removed by a blowup. The blowup turns out to be simplified if one performs a base change

$$u \rightarrow u^4, \quad (5.16)$$

after which

$$\Delta = -\frac{1}{16}(a_{4,8}^{(1)})^2 t^{18} u^8 \Delta'. \quad (5.17)$$



**Figure 11.** Kulikov Type III Weierstrass model with  $D_{16} \times \hat{E}_1$  enhancement.

For this degeneration, the simple blowup

$$(s, u) \rightarrow (s e_1, u e_1) \tag{5.18}$$

gives rise to a Type III.a Kulikov model consisting of two intersecting components. See figure 11 for an illustration; as before, we replace the coordinate symbol  $u$  by  $e_0$  after the blowup. Over the component  $e_0 = 0$ , the elliptic fiber degenerates as indicated by the power of  $e_0^8$  in the discriminant. The fibration over the component  $e_1 = 0$ , on the other hand, is a rational elliptic surface with 12 singular fibers. Of these, 8 singular fibers are accounted for by the intersection with the component  $e_0 = 0$  carrying the  $I_8$  singularity. The remaining 4 singular fibers are located away from intersection point  $e_1 = e_0 = 0$ . Only the latter correspond to physical 7-branes located at points of the base. More precisely, over  $e_1 = 0$  we can set  $t = 1$  and obtain

$$f|_{e_1=0} = p_4(s, e_0), \quad g|_{e_1=0} = s^2 p_2(s, e_0), \quad \Delta|_{e_1=0} = q_4(s, e_0), \tag{5.19}$$

for some polynomials of the indicated degrees. According to our general prescription, the rational elliptic surface contributes a  $\hat{E}_1$  factor to the asymptotic symmetry algebra. This corresponds to a non-abelian gauge algebra component  $A_1$  in the 9d theory at infinite distance.<sup>24</sup>

Over the surface patch with base  $e_0 = 0$  we have, on the other hand,

$$f|_{e_0=0} = t^2 p_1^2(e_1, t), \quad g|_{e_0=0} = t^3 p_1^3(e_1, t), \quad \Delta'|_{e_0=0} = p_1^2(e_1, t), \tag{5.20}$$

where  $\Delta'$  is the residual discriminant after factoring out  $-\frac{1}{16}(a_{4,8}^{(1)})^2 t^{18}$ . Apart from the  $(2, 3, 18)$  singularity at  $t = 0$  we observe a non-minimal singularity with vanishing orders  $(2, 3, 2)$  at  $p_1(e_1, t) = 0$ . Altogether, this component carries 20 of the original 24 7-branes on K3, complementing the 4 7-branes which form the  $\hat{E}_1$  singularity on the  $dP_9$  surface over  $e_1 = 0$ .

This procedure can be generalised to construct also the remaining maximal enhancements in the  $D$ -series, albeit not all of them as degenerations of global Tate models.

---

<sup>24</sup>As discussed after (2.5), the 4 singular fibers may in principle lead to an extension to  $\hat{E}_1$ . We leave it to future work to clarify this ambiguity.

## 6 Emergence of quartic gauge couplings?

We now change tack and comment on the large distance asymptotics of the quartic gauge couplings in eight dimensions, by mostly making use of known results for the dual heterotic string. These couplings are the analogs of the well-investigated quadratic gauge couplings in  $N = 2$  supersymmetric string theories in four dimensions (see, for example, the early works [74, 75]). Indeed, in eight dimensions it is not the gauge kinetic terms, but rather the quartic couplings that exhibit logarithmic one-loop corrections: the quadratic gauge kinetic terms do not receive any quantum corrections and become irrelevant in the UV. Distinguishing quadratic and quartic terms in eight dimensions may thus shed some light on the notion of emergence, from the point of view that not only the quadratic terms but all couplings might be emergent in string theory.

At one loop order, the relevant, bosonic structure of the quartic terms takes the schematic form

$$\mathcal{S}_{(4)}^{\text{8d,1-loop}} \sim \int d^8x \sqrt{-G^{(8)}} \left( \frac{1}{g(t)^2} [F^4] + \theta(t) [F \wedge F \wedge F \wedge F] \right), \quad (6.1)$$

where  $[*]$  summarily denotes the possible gauge and Lorentz contractions pertaining to a variety of superinvariants. The moduli dependent quantum couplings  $g(t)$ ,  $\theta(t)$  are known to be BPS-saturated and one-loop exact in the dual frame of the heterotic string. As such they can be computed [76–80] by generalizing the methods originally developed in [74, 75] for four-dimensional theories, and the notions of Borchers lifts and Kac-Moody algebras apply here as well. Computations in F-theory geometry were presented in [78, 79, 81], and for Type I strings e.g. in [76, 77, 80, 82–84].

We will consider here only abelian gauge fields, namely those which arise from the Kaluza-Klein compactification and which are the superpartners of the moduli  $t$ . They have quite different properties as compared to the gauge fields that are already present in ten dimensions. As we will see, this is true in particular from the point of view of emergence, which is why we will focus on them.

We will consider the parity-even couplings that arise from KK reduction of the heterotic string action in ten dimensions. The part relevant for us reads schematically [85, 86]

$$\begin{aligned} \mathcal{S}^{10\text{d}} \sim \int d^{10}x \sqrt{-G^{(10)}} & \left[ e^{-2\phi^{(10)}} \left( R + H^2 + R^2 + R^4 \dots \right)_{\text{tree}} \right. \\ & \left. + \left( R^4 + B \wedge R \wedge R \wedge R + \dots \right)_{\text{1-loop}} + \dots \right]. \end{aligned} \quad (6.2)$$

Here  $H = dB + \Omega_L + \Omega_F$  is the Chern-Simons corrected three-form field strength, where  $\Omega_L = \omega \wedge d\omega - \frac{2}{3}\omega \wedge \omega \wedge \omega$ , and  $\Omega_F$  is the Chern-Simons form for the 10d gauge fields, which we are not interested in here. The  $H^2$  term is related by supersymmetry to the  $R^2$  term [87, 88]. Via field redefinitions the latter can be completed into Gauss-Bonnet form

$$\mathcal{S}_{\text{GB}}^{10\text{d}} \sim \int d^{10}x \sqrt{-G^{(10)}} e^{-2\phi^{(10)}} \left( R_{mnr s} R^{mnr s} - 4R_{mn} R^{mn} + R^2 \right), \quad (6.3)$$

which avoids higher derivative contributions to the quadratic kinetic terms that otherwise would lead to unitarity violating poles in the graviton propagator [89].

At tree-level, the quadratic and quartic gauge couplings arise via KK reduction from terms linear and quadratic in the Riemann tensor. To illustrate our points and keep the discussion simple, we restrict ourselves to the sub-sector of abelian gauge fields for the eight-dimensional theory with generic  $E_8 \times E_8 \times U(1)^2$  gauge symmetry; including Wilson lines does not add anything substantial so we leave them out for now. The corresponding scalar moduli are thus  $t \in \{T, U\}$ , in the usual notation.

Upon performing standard KK reduction and choosing a suitable choice of basis for the gauge fields, one finds from the Ricci scalar and the Gauss-Bonnet term (6.3) the following quadratic and quartic pieces of the tree-level action for the  $U(1)_T \times U(1)_U$  gauge fields:

$$\begin{aligned} \mathcal{S}_{(2)}^{8d,\text{class}} &\sim \int d^8x \sqrt{-G^{(8)}} \frac{1}{g^2} M_s^4 F_{\mu\nu}^T F^{U,\mu\nu}, \\ \mathcal{S}_{(4)}^{8d,\text{class}} &\sim \int d^8x \sqrt{-G^{(8)}} \frac{1}{g^2} \left( -\frac{1}{32} t_8^{\mu_1\mu_2\mu_3\mu_4\mu_5\mu_6\mu_7\mu_8} F_{\mu_1\mu_2}^T F_{\mu_3\mu_4}^T F_{\mu_5\mu_6}^U F_{\mu_7\mu_8}^U \right). \end{aligned} \quad (6.4)$$

Here  $t_8$  is the familiar kinematical tensor in eight dimensions [90], and

$$\frac{1}{g^2} = \frac{1}{g_s^2}, \quad \text{with} \quad \frac{1}{g_s^2} \equiv e^{-2\phi^{(8)}} = \left( \frac{M_p}{M_s} \right)^6 = \text{Im}T e^{-2\phi^{(10)}}, \quad (6.5)$$

is the eight-dimensional string coupling. It coincides with the quartic gauge coupling at tree level. Above, we exhibited that the kinetic term has a dimensionful coupling and thus vanishes in the UV. From supersymmetry there are no loop corrections to this term.

There are also corresponding quadratic and quartic derivative terms in the moduli that we do not consider here. The quadratic term figures, as usual, as the metric on moduli space, and the familiar statements about distances in moduli space apply [3, 12].

A major difference as compared to  $N = 2$  supersymmetric theories in four dimensions lies in the structure of the parity-odd terms. From the  $H^2$  term one obtains after reduction  $dB \cdot (F_T \wedge A_U) + \dots$ , which dualizes in eight dimensions to  $A_4 \wedge F_T \wedge F_U + \dots$ , where  $A_4$  is the four-form dual of the  $B$ -field.

Thus there is no dynamical axion field  $\theta$  at tree-level, and this is as expected as the dilaton sits in the gravity multiplet in eight dimensions [91]. This is in contrast to four dimensions, where the dilaton belongs, together with the  $B$ -field, to a linear multiplet, which can be dualized to a vector multiplet that hosts both the dilaton and the axion fields. In  $N = 1$  language this can be represented by the familiar complexified coupling

$$S = \frac{1}{8\pi^2} \theta + i \frac{1}{g_s^2}. \quad (6.6)$$

By contrast, in eight dimensions we do not have such a complexified scalar coupling at tree level to begin with. This is in line with the fact that the corresponding coupling constant on the F-theory side is a real parameter, namely the Kähler parameter  $t_b = \text{vol}(\mathbb{P}^1)$  of the base of the elliptic K3 [52].

Nevertheless, at the one-loop level it is known that parity-even and parity-odd  $F^4$  terms are related by supersymmetry [92]. This suggests packing the effective, field dependent couplings in (6.1) together into one complexified parameter

$$\tau^{1\text{-loop}}(T, U) = \frac{1}{8\pi^2} \theta(T, U) + i \frac{1}{g(T, U)^2}. \quad (6.7)$$

This fits together with the fact that the one-loop quartic gauge couplings are given by covariant derivatives of a holomorphic prepotential,  $\mathcal{F}(t)$  [78, 80]. That is, their harmonic part obeys

$$\tau_{ijkl}^{1\text{-loop}}(t)|_{\text{harm.}} \sim \mathcal{F}_{ijkl}(t) \equiv \partial_{t_i} \partial_{t_j} \partial_{t_k} \partial_{t_l} \mathcal{F}(t), \quad t_* \in \{T, U\}. \quad (6.8)$$

Further, non-harmonic terms arise from the covariant derivatives which reflect massless states running in the loop.

However, given our lack of knowledge of a possible superspace formulation of the eight-dimensional couplings, it is unclear to us to what extent  $\mathcal{F}(t)$  makes literal sense as a superspace Lagrangian that would reproduce the one-loop couplings in eq. (6.1). Therefore we view it simply as a formal generating function of the parity even, one-loop, four point correlation functions for the time being.

The prepotential takes the familiar form of a ‘‘polylogarithmic lift’’, and for the geometry under consideration and positive Weyl chamber given by  $\text{Im}T > \text{Im}U$ , it reads [78, 80]

$$\mathcal{F}(T, U) = -\frac{1}{240\pi} U^5 + Q(T, U) - \frac{ic(0)\zeta(5)}{128\pi^6} - \frac{i}{(2\pi)^6} \sum_{(n,m)>0} c(nm) \mathcal{L}i_5(q_T^n q_U^m), \quad (6.9)$$

where  $q_T = e^{2\pi iT}$  and  $q_U = e^{2\pi iU}$ . The coefficients are determined by the elliptic genus of the 10d heterotic string, which is a weight  $k = -4$ , meromorphic modular form:

$$\phi_{-4}(q) = \frac{1}{\eta^{24}(q)} E_4(q)^2 =: \sum_n c(n) q^n. \quad (6.10)$$

Moreover,  $Q(T, U)$  denotes certain quartic terms which depend on the particular Weyl chamber and whose precise form does not matter here.

In terms of the prepotential  $\mathcal{F}(T, U)$ , the one-loop threshold corrections to the quartic couplings read [78, 80].<sup>25</sup>

$$\text{Im}\tau_{T^{4-s}U^s}^{1\text{-loop}}(T, U) = -\frac{i}{4} D_T^{4-s} D_U^s \mathcal{F}(T, U) + \frac{i}{4} \left( \frac{\text{Im}U}{\text{Im}T} \right)^{4-2s} \bar{D}_{\bar{T}}^s \bar{D}_{\bar{U}}^{4-s} \bar{\mathcal{F}}(\bar{T}, \bar{U}), \quad (6.11)$$

for  $s = 0, \dots, 4$ . Here

$$D_j = \left( \partial_{t_j} + \frac{k_j}{2i\text{Im}t_j} \right) \quad (6.12)$$

is the Serre derivative that maps modular forms of weight  $k_j$  to modular forms of weight  $k_j + 2$ .

Let us now connect to the theme of the present work, where we focus on the infinite distance degenerations corresponding to Kulikov limits of

$$\begin{aligned} \text{Type II.a} : \quad & \text{Im}T \rightarrow \infty, \text{Im}U \text{ finite}, \\ \text{Type III.a} : \quad & \text{Im}T, \text{Im}U \rightarrow \infty, \text{Im}T > \text{Im}U. \end{aligned} \quad (6.13)$$

---

<sup>25</sup>In the string basis. We expect from analogous computations in four dimensions [93] that our conclusions will not change if we transformed to the supergravity basis.

For these limits one might expect the corrections (6.11) to display a logarithmic dependence in  $q_T$ , corresponding to linear behavior in  $T$  (and similarly for  $q_U$  in the Type III limit, which we will not consider in the following). This ought to reflect the exponential growth of integrated-out KK states associated with decompactification to ten dimensions.

Clearly, since from (6.5) we have  $1/g^2 \sim \text{Im}T$ , such a behavior occurs already at the classical level, purely from geometry. In contrast, upon inspection one finds that the one-loop thresholds (6.11) derived from the prepotential (6.9) do not show such a divergence.

We emphasize that this applies to the specific abelian gauge symmetries we consider, which arise from KK reduction, and not to non-abelian gauge symmetries that appear already in ten dimensions; for these, the one-loop quartic thresholds generically do blow up linearly in the decompactification limit [76, 77].

This special feature of KK-related gauge symmetries sharpens the general question in what sense couplings can be thought to emerge from integrating out a tower of massive states at the loop level. It is a well-known fact that in general there is no absolute distinction between which terms may be called classical and which quantum, as these notions get mixed up by dualities. The same issue arises for the analogous gauge couplings in  $N = 2$  supersymmetric strings in four dimensions, where one can map from the heterotic to a dual Type IIA string frame. In this duality frame both the classical and one-loop couplings of the heterotic string combine into one classical, genus zero prepotential of the Type IIA string:  $\mathcal{F}_{\text{II}}(S, T, U) = \mathcal{F}_{\text{het}}^{\text{class}}(S, T, U) + \mathcal{F}_{\text{het}}^{1\text{-loop}}(T, U)$ . In this way, the conifold singularity, which arises at the classical level on the Type II side at finite distance in the moduli space, reproduces the one-loop correction on the heterotic side [45]. On the other hand, for the infinite distance limit of the particular correlators we consider, the situation appears different (in both four<sup>26</sup> and eight dimensions) in that the singularity arises also on the heterotic side only at tree level. The situation being similar also for Type I strings, it thus seems that there is no perturbative duality frame in which the infinite distance singularity arises at the quantum level.

Concentrating on eight dimensions, we will now try to refine the picture to reconcile it, at least partially, with the notion of integrating out massive states at the quantum level. To this end we consider the one-loop correction to the quartic gauge coupling  $1/g^2$ , which is governed by the imaginary part of

$$\mathcal{F}_{TTUU} = \partial_T^2 \partial_U^2 \mathcal{F}(T, U). \tag{6.14}$$

This coupling has been already evaluated in [78, 80], and knowing the result we can concisely rewrite it to fit our purposes. For this we push the quartic derivatives acting on  $\mathcal{F}$  to a double derivative acting on the elliptic genus,

$$\tilde{\phi}_0(q) = (q\partial_q)^2 \phi_{-4}(q) =: \sum_{n>-1} \tilde{c}(n)q^n, \tag{6.15}$$

where  $q\partial_q \equiv \frac{1}{2\pi i} \partial_\tau$ . Owing to  $(p\partial_p)^5 \mathcal{L}i_5(p) = -\log(1-p)$ , this indeed maps back to the four-point function

$$\mathcal{F}_{TTUU}(T, U) = \frac{i}{4\pi^2} \log \Psi_{TTUU}, \tag{6.16}$$

---

<sup>26</sup>See for example the familiar *STU*-model in four dimensions [75, 93, 94].

via an exponential Borcherds type of lift (A.16) given by:

$$\Psi_{TTUU} = \text{Exp-lift}[\tilde{\phi}_0] = \prod_{\substack{n,m \in \mathbb{Z} \\ (n,m) > 0}} (1 - q_T^n q_U^m)^{\tilde{c}(nm)}. \quad (6.17)$$

The lift subsumes the complexities that arise at intermediate steps when performing the one-loop modular integral. Note that due to the derivatives,  $\tilde{\phi}_0(q)$  is not a modular, but rather a quasi-modular form involving the Eisenstein series  $E_2(q) = q\partial_q \log \eta^{24}(q)$ . This is signified by the tilde. Accordingly one can split  $\tilde{\phi}_0(q)$  into a fully modular and a quasi-modular part,

$$\begin{aligned} \tilde{\phi}_0(q) &= \phi_0^M(q) + \phi_0^{QM}(q), \quad (6.18) \\ \phi_0^M(q) &= \frac{1}{72 \eta^{24}(q)} (41E_4^3 + 31E_6^2)(q) = J(q) - 744 =: \sum_{n \geq -1} \tilde{c}^M(n) q^n, \\ \phi_0^{QM}(q) &= -\frac{1}{24 \eta^{24}(q)} (5(E_4^3 + E_6^2) - 8E_2 E_4 E_6 - 2E_2^2 E_4^2)(q) =: \sum_{n \geq 1} \tilde{c}^{QM}(n) q^n, \end{aligned}$$

and define the respective lifts

$$\begin{aligned} \Psi_{TTUU}^M &= q_T^{-1} \prod_{\substack{n,m \in \mathbb{Z} \\ (n,m) > 0}} (1 - q_T^n q_U^m)^{\tilde{c}^M(nm)}, \quad (6.19) \\ \Psi_{TTUU}^{QM} &= q_T \prod_{\substack{n,m \in \mathbb{Z} \\ (n,m) > 0}} (1 - q_T^n q_U^m)^{\tilde{c}^{QM}(nm)}, \end{aligned}$$

such that

$$\mathcal{F}_{TTUU}(T, U) = \frac{i}{4\pi^2} \log[J(T) - J(U)] + \frac{i}{4\pi^2} \sigma(T, U), \quad (6.20)$$

with

$$\begin{aligned} \log[J(T) - J(U)] &\equiv \log \Psi_{TTUU}^M, \quad (6.21) \\ \sigma(T, U) &:= \log \Psi_{TTUU}^{QM}. \end{aligned}$$

The first line reflects a classic identity by Borcherds [95] and the second is a definition. At this point the question arises about the significance of the particular split (6.18), since a priori there is an ambiguity in adding and subtracting a weight zero modular form between both terms. We pushed the  $1/q$  pole completely into  $\phi_0^M(q)$  so that  $\sigma(T, U)$  is a cusp form without singularity in the interior of the moduli space. There is an additional ambiguity in trading a constant between  $\phi_0^M(q)$  and  $\phi_0^{QM}(q)$ . This translates to an ambiguity of adding and subtracting a term proportional to  $\log \eta(T)\eta(U)$  between  $\log \Psi_{TTUU}^M$  and  $\log \Psi_{TTUU}^{QM}$ . On top of that there is the freedom of trading a factor between  $\Psi_{TTUU}^M$  in  $\Psi_{TTUU}^{QM}$ , such as shown in eq. (6.19).

We resolved these ambiguities via imposing modular invariance; that is, by requiring that both  $\Psi_{TTUU}^M$  and  $\Psi_{TTUU}^{QM}$  individually transform with bi-modular weight  $(0, 0)$  under modular transformations in  $\text{SL}(2, \mathbb{Z})_T \times \text{SL}(2, \mathbb{Z})_U$ . While this may seem ad hoc, it is guided by the physical intuition that splitting up  $\Psi$  makes best sense if both components respect the underlying modular gauge symmetries individually.



Putting everything together, the complete one-loop contribution to the quartic coupling (6.11) can thus be rewritten as

$$\begin{aligned} \text{Im}\tau_{TTUU}^{1\text{-loop}}(T, U) &= -\frac{i}{4}D_T^2 D_U^2 \mathcal{F} + \text{cc.} \\ &= \frac{1}{16\pi^2} \log[J(T) - J(U)] + \frac{1}{16\pi^2} \sigma(T, U) - \frac{i}{2}G(T, U) + \text{cc.}, \end{aligned} \quad (6.22)$$

whose non-harmonic part,

$$\begin{aligned} G(T, U) &= \frac{24}{(\text{Im}T \text{Im}U)^2} \left( 3 - 3i(\text{Im}T \partial_T + \text{Im}U \partial_U) - (\text{Im}T)^2 \partial_T^2 - (\text{Im}U)^2 \partial_U^2 \right. \\ &\quad \left. - 3\text{Im}T \text{Im}U \partial_T \partial_U + i \text{Im}T \text{Im}U (\text{Im}T \partial_T^2 \partial_U + \text{Im}U \partial_T \partial_U^2) \right) \mathcal{F}(T, U), \end{aligned} \quad (6.23)$$

arises from the connection pieces of the covariant derivatives (6.12). By construction it restores the modular  $\text{SL}(2, \mathbb{Z})_T \times \text{SL}(2, \mathbb{Z})_U$  symmetry that is broken by  $\sigma(T, U)$  as a consequence of the quasi-modular components of  $\phi_0^{QM}(q)$ .

It is easy to verify that  $\text{Im}\tau_{TTUU}^{1\text{-loop}}(T, U)$  does indeed not diverge for  $\text{Im}T \rightarrow \infty$ , and thus it seems, at first sight, that the tower of asymptotically massless KK states has not been integrated out.

In order to understand this apparent clash with expectations, recall that the decomposition in (6.22) is familiar from four dimensions [96, 97]. There the actual string coupling has an extra one-loop ‘‘Green-Schwarz’’ correction given by (the 4d analog of)  $-\text{Im}G(T, U)$ , which cancels against the non-harmonic connection term  $+\text{Im}G(T, U)$  in the one-loop quadratic gauge coupling. It arises from the duality transformation from the linear to a vector supermultiplet and compensates the anomalous transformation properties of the complex axio-dilaton field,  $S$ . If we absorb the last two terms of the decomposition (6.22) into the axio-dilaton  $S$ , we thus obtain a holomorphic, modular invariant version of it:  $S^{\text{inv}} = S + \frac{i}{8\pi^2} \sigma(T, U)$  [96, 97].

In eight dimensions, the situation is different because the dilaton as a member of the gravity multiplet is a real field, and there is no duality transformation extending it to a complex field. Nevertheless the last two terms of (6.22) are universal for one-loop amplitudes and so can be similarly absorbed into a modular invariant (though this time non-harmonic) string coupling:

$$\begin{aligned} \frac{1}{g_{\text{ren}}^2(T, U)} &:= \frac{1}{g_s^2} + \Delta(T, U), \\ \Delta(T, U) &\equiv \frac{1}{8\pi^2} \text{Re} \sigma(T, U) + \text{Im}G(T, U). \end{aligned} \quad (6.24)$$

This renormalized coupling has no singularity in the interior of the moduli space and so makes good sense as a physical coupling; by construction,  $\sigma$  is a cusp form, and the derivatives in  $G$  acting on  $\mathcal{F}$  yield higher polylogs and so do not produce singularities either.

In terms of this renormalized string coupling, the total tree-level plus one-loop quartic gauge coupling then takes the form

$$\text{Im}\tau_{TTUU}(T, U) \equiv \frac{1}{g^2(T, U)} = \frac{1}{g_{\text{ren}}^2(T, U)} + \frac{1}{16\pi^2} \log |J(T) - J(U)|^2. \quad (6.25)$$

Its threshold piece captures not only the finite distance singularity at  $T = U$  (plus its modular images), which arises from charged BPS states becoming massless there, but now also the infinite distance singularity

$$\frac{1}{16\pi^2} \log |J(T) - J(U)|^2 \longrightarrow \frac{1}{4\pi} \text{Im} T, \quad \text{as } T \rightarrow i\infty, \quad (6.26)$$

which does reflect an integrating out of asymptotically massless KK states. This is because it originates from the modular  $J$ -functions and not from geometric zero mode terms. This resonates well with the notion of emergence.

We propose that  $g_{\text{ren}}(T, U)$  in (6.24) is the physically relevant coupling to consider in this context, even though it is not the standard loop counting parameter in the heterotic string frame. This is in line with the considerations of refs. [96–98] which apply to four-dimensional theories. From this point of view, the renormalized coupling defines, via (6.5), a field-dependent, modular invariant string scale  $M_s^{\text{ren}}(T, U)$  as follows:

$$\left( \frac{M_p}{M_s^{\text{ren}}(T, U)} \right)^6 = \left( \frac{M_p}{M_s} \right)^6 + \Delta(T, U). \quad (6.27)$$

This is only a mild modification of  $M_s$ , despite the fact that hidden in  $\Delta(T, U)$  is the infinite distance singularity of  $\sigma(T, U)$ . The point is that the latter is subdominant to the tree-level singularity. More precisely, the singularity of  $\sigma(T, U)$  is the negative of the singularity of the quartic gauge threshold correction (6.26); both stem from the relative factor  $q_T$  in the split (6.19) which was necessary for the individual modular invariance of the two pieces. Requiring positivity of the right hand side of eq. (6.24) in the decompactification limit thus imposes the following constraint (up to order one coefficients):

$$\left( \frac{1}{g_{\text{ren}}^2(T, U)} \right)_{T \rightarrow i\infty} \sim \text{Im} T \left( e^{-2\phi^{(10)}} - 1 \right) > 0, \quad (6.28)$$

which puts the theory to the weak coupling regime at all energies and so is self-consistent within perturbation theory. This is analogous to the well-known constraint in four dimensions [98] which posits that the tree-level term should always be dominant. It is consistent with the positivity of the Kähler parameter  $t_b = \text{vol}(\mathbb{P}^1)$  on the F-theory side upon identifying  $t_b \sim 1/g_s^2 - \text{Im} T > 0$ , which is analogous to the map between type II and heterotic parameters,  $T_{b, \text{II}} = S_{\text{het}} - T_{\text{het}}$  in four dimensions [94, 99]. It is also consistent with the choice of positive Weyl chamber, ie., the quintic term, for the prepotential as in (6.9), and is fully in line with analogous arguments for the gauge kinetic terms in four dimensions.

The upshot is that (6.28) shows that the classical contribution necessarily dominates over the one-loop correction in the decompactification limit  $T \rightarrow i\infty$ , even after having renormalized the string coupling such as to have a divergent one-loop contribution in the first place. Thus the putative emergence of the quartic gauge coupling is at best partial. This obstacle against emergence in a strong sense, namely that couplings emerge entirely from integrating out states at the quantum level, has been recognized and addressed before eg. in [12, 19, 43, 44].

## 7 Discussion

In this article we have interpreted the infinite distance limits in the complex structure moduli space of elliptic K3 surfaces from the point of view of F-theory in eight dimensions. The geometric classification of such limits in [1] is in a precise one-to-one correspondence with the possible weak coupling or (partial) decompactification limits, as summarised in figure 1. In the decompactification limits, the light towers of KK states are encoded geometrically in M2-branes wrapping vanishing transcendental elliptic curves in M-theory, or equivalently in string junctions signalling an enhancement of the symmetry algebra of the theory to a Kac-Moody or loop algebra. Weak coupling limits, on the other hand, exhibit additional towers of states, be it excitations of a light emergent string or proper supergravity KK modes.

To corroborate the interpretation of loop algebras as the hallmark of a dual decompactification, we have translated a representative class of models exhibiting such enhancements into the language of the dual heterotic string, where the mirror map allows for a clear comparison with the heterotic variables. The upshot of this analysis is that while at first sight the complex degeneration of the compactification space at infinite distance might obscure the physics encountered on the boundary of moduli space, one can give, on the contrary, a very clear interpretation in full agreement with the predictions of the Emergent String Conjecture [15].

The simplicity of the asymptotic theory in the dual heterotic frame, given by a compactification on a torus, invites a quantitative analysis of the Emergence Proposal [12, 18–20, 43, 44], applied to the quartic, BPS saturated couplings of the KK  $U(1)$ s of the eight-dimensional theory. Building on the explicit computation of the 1-loop corrected quartic couplings in eight dimensions, we have encountered a certain tension, described generally already in [12, 19, 43, 44], with the idea that all couplings are generated by the integration of massless towers at infinite distance. Contrary to naive expectations, one finds a perfect cancellation between the divergent contributions to the 1-loop KK threshold corrections at infinite distance. However, by interpreting a subsector of these corrections as contributions to the modular invariant dilaton, one can argue that at least part of the divergent contributions to the KK couplings are obtained at the 1-loop level, albeit only the subleading ones.

This observation applies also to four dimensions, despite important differences of the analysis including the fact that the relevant couplings in eight dimensions are the quartic, rather than quadratic, gauge couplings. It would be interesting to see to what extent the findings of [100] about KK compactifications and axionic strings in four dimensions carry over to eight dimensions, in relation to the parity odd  $F^4$  term in (6.1) (which may couple to “exotic” instantons [101]). Its axion coupling  $\theta(t)$  formally gauges a  $(-1)$ -form Chern-Weil symmetry, but as we described, it is not a fundamental field in the eight-dimensional heterotic string. This seems consistent with [100] who argue that in such a case the massless tower is given by KK states rather than by an emergent string.

## Acknowledgments

We thank Markus Dierigl, Hee-Cheol Kim, Stephan Stieberger, Eran Palti and Irene Valenzuela for helpful discussions. The work of S.-J.L. is supported by IBS under the project code, IBS-R018-D1. W.L. thanks the CERN Theory Department for support. The work of T.W. is supported in part by Deutsche Forschungsgemeinschaft under Germany's Excellence Strategy EXC 2121 Quantum Universe 390833306.

## A Siegel modular forms: definitions and properties

There is much literature on Jacobi and Siegel modular forms, see for example [102–105] for a selection of mathematical literature and [56, 66, 99, 106, 107] for physical applications related to our work. Thus we will be very brief and refer to those papers for details; our main purpose here is to present a collection of formulas and explicit asymptotic expansions that are useful for our purposes.

Siegel modular forms are special examples of more general automorphic forms, and have the property that they describe the moduli spaces of genus  $g$  Riemann surfaces. Genus two Siegel forms happen to underlie the breaking of  $E_8 \times E_8$  to  $E_7 \times E_8$ , which in heterotic language amounts to switching on a particular Wilson line; a fact that had been observed in physics first in ref. [106]. As we put particular emphasis on this geometry in the main text, we concentrate here on  $g = 2$  Siegel forms, with the understanding that most of the structure carries over to more general Wilson line configurations.

Genus two Siegel forms of weight  $k$ , denoted generically by  $\Phi_k(\Omega)$ , are holomorphic functions on the Siegel upper half-plane, which is isomorphic to the homogeneous domain,

$$\mathbb{H}_2 \simeq \left\{ \Omega = \begin{pmatrix} T & V \\ V & U \end{pmatrix} \in \text{Mat}_2(\mathbb{C}) \mid \det \text{Im} \Omega > 0, \text{Tr Im} \Omega > 0 \right\}, \quad (\text{A.1})$$

equipped with the automorphy property  $\Phi_k(\Omega) = \det(C\Omega + D)^{-k} \Phi((A\Omega + B)(C\Omega + D)^{-1})$  for  $\begin{pmatrix} A & B \\ C & D \end{pmatrix} \in \Gamma_2 \equiv \text{Sp}(4, \mathbb{Z})$ . The analog of the familiar fundamental domain of the modular group,  $\Gamma_1 \equiv \text{SL}(2, \mathbb{Z})$ , is the Siegel modular threefold obtained by quotienting out

$$\mathcal{A}_2 = \mathbb{H}_2 / \Gamma_2, \quad (\text{A.2})$$

which is the moduli space of principally polarized abelian surfaces.

Just like ordinary Jacobi forms, the Siegel modular forms for  $g = 2$  form a ring graded by the weight  $k$  that is finitely generated,<sup>27</sup>

$$M_*(\Gamma_2) \equiv \bigoplus M_k(\Gamma_2) = \mathbb{C}[\psi_4, \psi_6, \chi_{10}, \chi_{12}, \chi_{35}], \quad (\text{A.3})$$

where we denote Eisenstein series and cusp forms by  $\psi_k = \psi_k(\Omega)$  and  $\chi_k = \chi_k(\Omega)$ , respectively. In the following we will provide explicit expressions and a few identities for the generators of the ring of Siegel modular forms of genus 2.

---

<sup>27</sup>There is one relation in that the square of  $\chi_{35}$  can be expressed in terms of the other generators.

An important feature of Siegel modular forms, and more general automorphic forms, is that they can be generated as liftings from ordinary, weak or almost holomorphic Jacobi forms. Physically this amounts to a map from world-sheet to space-time quantities. Recall that a Jacobi form of weight  $k$  and index  $m$  is a function  $\phi_{k,m}(\tau, z) : \mathbb{H}_1 \times \mathbb{C} \rightarrow \mathbb{C}$  which obeys:

1.  $\phi_{k,m}\left(\frac{a\tau+b}{c\tau+d}, \frac{z}{c\tau+d}\right) = (c\tau+d)^k e^{\frac{2\pi imcz^2}{c\tau+d}} \phi_{k,m}(\tau, z)$  for  $\begin{pmatrix} a & b \\ c & d \end{pmatrix} \in \Gamma_1$ ,
2.  $\phi_{k,m}(\tau, z + \lambda\tau + \mu) = e^{-2\pi im(\lambda^2\tau + 2\lambda z)} \phi_{k,m}(\tau, z)$ , for  $\lambda, \mu \in \mathbb{Z}$ ,
3. and has a Fourier expansion  $\phi_{k,m}(\tau, z) = \sum_{n \geq 0} \sum_{r^2 \leq 4nm} c(n, r) q^n \xi^r$  with integral coefficients  $c$ , where  $q \equiv e^{2\pi i\tau}$ ,  $\xi \equiv e^{2\pi iz}$ .

For more details concerning Jacobi forms we refer to [102, 107].

There are two important basic versions of such liftings, both based on Hecke trans-forms, namely arithmetic (Maaß-Gritsenko) liftings [103, 105] and exponential (Borchers) liftings [95]. The arithmetic lifting is provided by the following Hecke operator acting on index  $m = 1$  Jacobi forms,

$$\mathcal{V}[*] : J_{k,1} \longrightarrow M_k(\Gamma_2), \tag{A.4}$$

which maps ordinary Eisenstein series and cusp forms into genus 2 Siegel Eisenstein series and cusp forms, respectively.

Concretely, one starts from an index  $m = 1$  Jacobi form with even weight  $k = 2* \geq 0$  and consider its integral Fourier expansion

$$\phi_{k,1}(\tau, z) := \sum_{n \geq 0, l \in \mathbb{Z}} c(n, l) q^n \xi^l. \tag{A.5}$$

Owing to the defining transformation properties of Jacobi forms mentioned above, the coefficients depend only on the discriminant  $D = 4n - l^2$ , i.e.,  $c(n, l) = c(D)$ . The action of the Hecke operator  $\mathcal{V}$  in (A.4) on the coefficients is then given by

$$\tilde{c}(n, m, l) := \sum_{a|(n,m,l)} a^{k-1} c\left(\frac{nm}{a^2}, \frac{l}{a}\right), \tag{A.6}$$

where  $\tilde{c}(0, 0, 0) = -B_{2k}/4k c(0)$  for Eisenstein series (and  $\tilde{c}(0, 0, 0) = 0$  for cusp forms). The image under the lift  $\mathcal{V}$  is the following Siegel-Maaß form of even weight:

$$\psi_k(\Omega) = \mathcal{V}[\phi_{k,1}] = \sum_{\substack{n,m,r \in \mathbb{Z}, n,m \geq 0 \\ 4nm - l^2 \geq 0}} \tilde{c}(n, m, l) q_T^n q_U^m q_V^l, \tag{A.7}$$

where we denote:  $q_T \equiv e^{2\pi iT}$ ,  $q_U \equiv e^{2\pi iU}$  and  $q_V \equiv e^{2\pi iV}$ .

Explicitly, for the even generators of  $M_k$  we first consider

$$\begin{aligned} \phi_{4,1}(\tau, z) \equiv E_{4,1}(\tau, z) &= \frac{1}{2} \left( \theta_2^6 \theta_3^2(\tau, z) + \theta_3^6 \theta_2^2(\tau, z) + \theta_4^6 \theta_4^2(\tau, z) \right) \\ &= 1 + q \left( 126 + \xi^2 + \frac{1}{\xi^2} + 56\xi + \frac{56}{\xi} \right) + \mathcal{O}(q^2) \end{aligned} \tag{A.8}$$

and thus

$$\begin{aligned} \psi_4(\Omega) = \mathcal{V}[\phi_{4,1}] &= 1 + 240(q_T + q_U) + 2160(q_T^2 + q_U^2) \\ &+ q_T q_U \left( 240q_V^2 + \frac{240}{q_V^2} + 13440q_V + \frac{13440}{q_V} + 30240 \right) + \mathcal{O}(q^3), \end{aligned} \quad (\text{A.9})$$

while

$$\begin{aligned} \phi_{6,1}(\tau, z) &\equiv E_{6,1}(\tau, z) = \frac{1}{2} \left( -(\theta_3^4 + \theta_4^4) \theta_2^6 \theta_2^2(\tau, z) + (\theta_4^4 - \theta_2^4) \theta_3^6 \theta_3^2(\tau, z) + (\theta_2^4 + \theta_3^4) \theta_4^6 \theta_4^2(\tau, z) \right) \\ &= 1 + q \left( -330 + \xi^2 + \frac{1}{\xi^2} - 88\xi - \frac{88}{\xi} \right) + \mathcal{O}(q^2) \end{aligned} \quad (\text{A.10})$$

lifts to

$$\begin{aligned} \psi_6(\Omega) = \mathcal{V}[\phi_{6,1}] &= 1 - 504(q_T + q_U) - 16632(q_T^2 + q_U^2) \\ &+ q_T q_U \left( -504q_V^2 - \frac{504}{q_V^2} + 44352q_V + \frac{44352}{q_V} + 166320 \right) + \mathcal{O}(q^3). \end{aligned} \quad (\text{A.11})$$

Moreover, for the cusp forms at weights 10 and 12 we consider:

$$\begin{aligned} \phi_{10,1}(\tau, z) &= \frac{1}{144} (E_{4,1}(\tau, z)E_6(\tau) - E_{6,1}(\tau, z)E_4(\tau)) \\ &= q \left( \xi + \frac{1}{\xi} - 2 \right) + q^2 \left( 36 - \frac{2}{\xi^2} - 2\xi^2 - \frac{16}{\xi} - 16\xi \right) + \mathcal{O}(q^3) \end{aligned} \quad (\text{A.12})$$

and therefore

$$\begin{aligned} \chi_{10}(\Omega) = \mathcal{V}[\phi_{10,1}] &= q_T q_U \left( q_V + \frac{1}{q_V} - 2 \right) \\ &+ q_T q_U (q_T + q_U) \left( 36 - \frac{2}{q_V^2} - 2q_V^2 - \frac{16}{q_V} - 16q_V \right) + \mathcal{O}(q^4). \end{aligned} \quad (\text{A.13})$$

Finally

$$\begin{aligned} \phi_{12,1}(\tau, z) &= \frac{1}{144} (E_{4,1}(\tau, z)E_4^2(\tau) - E_{6,1}(\tau, z)E_6(\tau)) \\ &= q \left( 10 + \xi + \frac{1}{\xi} \right) + q^2 \left( -132 + \frac{10}{\xi^2} + 10\xi^2 - \frac{88}{\xi} - 88\xi \right) + \mathcal{O}(q^3), \end{aligned} \quad (\text{A.14})$$

which yields

$$\begin{aligned} 12\chi_{12}(\Omega) = \mathcal{V}[\phi_{12,1}] &= q_T q_U \left( 10 + q_V + \frac{1}{q_V} \right) \\ &+ q_T q_U (q_T + q_U) \left( -132 + \frac{10}{q_V^2} + 10q_V^2 - \frac{88}{q_V} - 88q_V \right) + \mathcal{O}(q^4). \end{aligned} \quad (\text{A.15})$$

Evidently both cusp forms vanish for large  $\text{Im}T$  and  $\text{Im}U$ .

Apart from the arithmetic liftings instantiated by the Hecke operator  $\mathcal{V}$ , there are also exponential (or Borcherds) liftings that map from Jacobi forms to Siegel modular forms,

or more general automorphic forms. The starting point is an (in general weak or nearly holomorphic) Jacobi form of weight zero and index  $t$

$$\phi_{0,t}(\tau, z) := \sum_{n,l \in \mathbb{Z}} c(n, l) q^n \xi^l,$$

with integral Fourier coefficients  $c(n, l) = c(4n - l^2)$ . The exponential lift is then the meromorphic modular form with weight  $\frac{1}{2}c(0, 0)$  given by [105]

$$\chi_{1/2c(0,0)}(\Omega) = \text{Exp-lift}[\phi_{0,t}] = q_T^\alpha q_U^\beta q_V^\gamma \prod_{\substack{n,m,l \in \mathbb{Z} \\ (n,m,l) > 0}} \left(1 - q_T^n q_U^m q_V^l\right)^{c(nm,l)}, \quad (\text{A.16})$$

where the positive root condition  $(n, m, l) > 0$  means that  $n > 0, m, l \in \mathbb{Z}$  or  $n = 0, m > 0, l \in \mathbb{Z}$  or  $m = n = 0, l < 0$ . Moreover,  $\alpha = \frac{1}{4} \sum_l l^2 c(0, l)$ ,  $\beta = \frac{1}{24} \sum_l c(0, l)$  and  $\gamma = \frac{1}{2} \sum_{l > 0} l c(0, l)$ . For the Wilson line geometry we consider, only  $t = 1$  will be relevant.

Particularly well established in physics [106, 108] is the cusp form

$$\chi_{10}(\Omega) = \chi_5^2(\Omega)$$

which, besides the arithmetic lifting (A.13), also has a representation as exponential lifting in terms of the following product

$$\chi_5(\Omega) = \text{Exp-lift}[\phi_{0,1}] = (q_T q_U q_V)^{1/2} \prod_{\substack{n,m,l \in \mathbb{Z} \\ (n,m,l) > 0}} \left(1 - q_T^n q_U^m q_V^l\right)^{c_5(4nm-l^2)} \quad (\text{A.17})$$

$$= (q_T q_U)^{1/2} \left( \sqrt{q_V} - \frac{1}{\sqrt{q_V}} \right) \left( 1 - (q_T + q_U) \left( 10 + q_V + \frac{1}{q_V} \right) + \mathcal{O}(q^2) \right), \quad (\text{A.18})$$

where

$$\phi_{0,1}(\tau, z) \equiv \frac{1}{\eta^{24}(q)} \phi_{12,1}(\tau, z) =: \sum_{n \geq 0, l \in \mathbb{Z}} c_5(4n - l^2) q^n \xi^l \quad (\text{A.19})$$

is one of the standard generators of Jacobi forms.

Moreover one can apply a certain Hecke transformation (denoted by  $T_0(2)$  in [105]) to obtain the following nearly holomorphic weight zero, index one Jacobi form

$$\phi_{0,1}^{(2)}(\tau, z) = (T_0(2) - 2)\phi_{0,1}(\tau, z) \quad (\text{A.20})$$

$$= \frac{1}{18\eta^{24}(q)} \left( 11E_4^2 E_{4,1} + 7E_6 E_{6,1} \right) (\tau, z) \quad (\text{A.21})$$

$$=: \sum_{n,m} c_{35}(n, l) q^n \xi^l. \quad (\text{A.22})$$

This then provides the product representation of the remaining cusp form:

$$\chi_{35}(\Omega) = \text{Exp-lift}[\phi_{0,1}^{(2)}] = q_T^2 q_U^3 q_V \prod_{(n,m,l) > 0} \left(1 - q_T^n q_U^m q_V^l\right)^{c_{35}(4nm-l^2)} \quad (\text{A.23})$$

$$= q_T^2 q_U^2 (q_U - q_T) \left( q_V - \frac{1}{q_V} \right) \left( 1 - (q_T + q_U) \left( 70 + q_V^2 + \frac{1}{q_V^2} \right) + \mathcal{O}(q^2) \right).$$

One can cancel the zero at  $V = 0$  by considering

$$\begin{aligned} \chi_{30}(\Omega) &:= \frac{\chi_{35}(\Omega)}{\chi_5(\Omega)} = \text{Exp-lift}[\phi_{0,1}^{(2)} - \phi_{0,1}] \\ &= \left(q_T^3 q_U^3 q_V\right)^{1/2} (q_U - q_T) \\ &\quad \times \left(q_V + \frac{1}{q_V}\right) \left(1 - (q_T + q_U) \left(60 + q_V^2 + \frac{1}{q_V^2} - q_V - \frac{1}{q_V}\right) + \mathcal{O}(q^2)\right) \end{aligned} \tag{A.24}$$

which vanishes for  $T = U$  (plus its modular images) only.

Finally we note the useful formula for the discriminant:

$$\begin{aligned} \Delta(\Omega) &:= \frac{1}{1728} (\psi_4^3(\Omega) - \psi_6^2(\Omega)) \\ &= q_T + q_U - 24(q_T + q_U)^2 - q_T q_U \left(186 - \frac{1}{q_V^2} - q_V^2 + \frac{28}{q_V} + 28q_V\right) + \mathcal{O}(q^2) \end{aligned} \tag{A.25}$$

This vanishes if both  $\text{Im}T$  and  $\text{Im}U$  become large, which characterizes a Kulikov Type III limit.

**Open Access.** This article is distributed under the terms of the Creative Commons Attribution License ([CC-BY 4.0](https://creativecommons.org/licenses/by/4.0/)), which permits any use, distribution and reproduction in any medium, provided the original author(s) and source are credited.

## References

- [1] S.-J. Lee and T. Weigand, *Elliptic K3 Surfaces at Infinite Complex Structure and their Refined Kulikov models*, [arXiv:2112.07682](https://arxiv.org/abs/2112.07682) [[INSPIRE](#)].
- [2] C. Vafa, *The string landscape and the swampland*, [hep-th/0509212](https://arxiv.org/abs/hep-th/0509212) [[INSPIRE](#)].
- [3] H. Ooguri and C. Vafa, *On the Geometry of the String Landscape and the Swampland*, *Nucl. Phys. B* **766** (2007) 21 [[hep-th/0605264](https://arxiv.org/abs/hep-th/0605264)] [[INSPIRE](#)].
- [4] H. Ooguri, E. Palti, G. Shiu and C. Vafa, *Distance and de Sitter Conjectures on the Swampland*, *Phys. Lett. B* **788** (2019) 180 [[arXiv:1810.05506](https://arxiv.org/abs/1810.05506)] [[INSPIRE](#)].
- [5] D. Lüster, E. Palti and C. Vafa, *AdS and the Swampland*, *Phys. Lett. B* **797** (2019) 134867 [[arXiv:1906.05225](https://arxiv.org/abs/1906.05225)] [[INSPIRE](#)].
- [6] D. Klaeuer, D. Lüster and E. Palti, *A Spin-2 Conjecture on the Swampland*, *Fortsch. Phys.* **67** (2019) 1800102 [[arXiv:1811.07908](https://arxiv.org/abs/1811.07908)] [[INSPIRE](#)].
- [7] N. Cribiori, D. Lüster and M. Scalisi, *The gravitino and the swampland*, *JHEP* **06** (2021) 071 [[arXiv:2104.08288](https://arxiv.org/abs/2104.08288)] [[INSPIRE](#)].
- [8] A. Castellano, A. Font, A. Herráez and L.E. Ibáñez, *A gravitino distance conjecture*, *JHEP* **08** (2021) 092 [[arXiv:2104.10181](https://arxiv.org/abs/2104.10181)] [[INSPIRE](#)].
- [9] F. Baume and J. Calderón Infante, *Tackling the SDC in AdS with CFTs*, *JHEP* **08** (2021) 057 [[arXiv:2011.03583](https://arxiv.org/abs/2011.03583)] [[INSPIRE](#)].
- [10] E. Perlmutter, L. Rastelli, C. Vafa and I. Valenzuela, *A CFT distance conjecture*, *JHEP* **10** (2021) 070 [[arXiv:2011.10040](https://arxiv.org/abs/2011.10040)] [[INSPIRE](#)].



- [11] T.D. Brennan, F. Carta and C. Vafa, *The String Landscape, the Swampland, and the Missing Corner*, *PoS TASI2017* (2017) 015 [[arXiv:1711.00864](#)] [[INSPIRE](#)].
- [12] E. Palti, *The Swampland: Introduction and Review*, *Fortsch. Phys.* **67** (2019) 1900037 [[arXiv:1903.06239](#)] [[INSPIRE](#)].
- [13] M. van Beest, J. Calderón-Infante, D. Mirfendereski and I. Valenzuela, *Lectures on the Swampland Program in String Compactifications*, [arXiv:2102.01111](#) [[INSPIRE](#)].
- [14] M. Graña and A. Herráez, *The Swampland Conjectures: A Bridge from Quantum Gravity to Particle Physics*, *Universe* **7** (2021) 273 [[arXiv:2107.00087](#)] [[INSPIRE](#)].
- [15] S.-J. Lee, W. Lerche and T. Weigand, *Emergent strings from infinite distance limits*, *JHEP* **02** (2022) 190 [[arXiv:1910.01135](#)] [[INSPIRE](#)].
- [16] S. Lanza, F. Marchesano, L. Martucci and I. Valenzuela, *Swampland Conjectures for Strings and Membranes*, *JHEP* **02** (2021) 006 [[arXiv:2006.15154](#)] [[INSPIRE](#)].
- [17] S. Lanza, F. Marchesano, L. Martucci and I. Valenzuela, *The EFT stringy viewpoint on large distances*, *JHEP* **09** (2021) 197 [[arXiv:2104.05726](#)] [[INSPIRE](#)].
- [18] D. Harlow, *Wormholes, Emergent Gauge Fields, and the Weak Gravity Conjecture*, *JHEP* **01** (2016) 122 [[arXiv:1510.07911](#)] [[INSPIRE](#)].
- [19] B. Heidenreich, M. Reece and T. Rudelius, *Emergence of Weak Coupling at Large Distance in Quantum Gravity*, *Phys. Rev. Lett.* **121** (2018) 051601 [[arXiv:1802.08698](#)] [[INSPIRE](#)].
- [20] T.W. Grimm, E. Palti and I. Valenzuela, *Infinite Distances in Field Space and Massless Towers of States*, *JHEP* **08** (2018) 143 [[arXiv:1802.08264](#)] [[INSPIRE](#)].
- [21] Y. Hamada, M. Montero, C. Vafa and I. Valenzuela, *Finiteness and the swampland*, *J. Phys. A* **55** (2022) 224005 [[arXiv:2111.00015](#)] [[INSPIRE](#)].
- [22] S.-J. Lee, W. Lerche and T. Weigand, *Emergent strings, duality and weak coupling limits for two-form fields*, *JHEP* **02** (2022) 096 [[arXiv:1904.06344](#)] [[INSPIRE](#)].
- [23] S.-J. Lee, W. Lerche and T. Weigand, *Tensionless Strings and the Weak Gravity Conjecture*, *JHEP* **10** (2018) 164 [[arXiv:1808.05958](#)] [[INSPIRE](#)].
- [24] S.-J. Lee, W. Lerche and T. Weigand, *Modular Fluxes, Elliptic Genera, and Weak Gravity Conjectures in Four Dimensions*, *JHEP* **08** (2019) 104 [[arXiv:1901.08065](#)] [[INSPIRE](#)].
- [25] D. Klaeuer, S.-J. Lee, T. Weigand and M. Wiesner, *Quantum corrections in 4d  $N = 1$  infinite distance limits and the weak gravity conjecture*, *JHEP* **03** (2021) 252 [[arXiv:2011.00024](#)] [[INSPIRE](#)].
- [26] F. Xu, *On TCS  $G_2$  manifolds and 4D emergent strings*, *JHEP* **10** (2020) 045 [[arXiv:2006.02350](#)] [[INSPIRE](#)].
- [27] F. Baume, F. Marchesano and M. Wiesner, *Instanton Corrections and Emergent Strings*, *JHEP* **04** (2020) 174 [[arXiv:1912.02218](#)] [[INSPIRE](#)].
- [28] T.W. Grimm, C. Li and E. Palti, *Infinite Distance Networks in Field Space and Charge Orbits*, *JHEP* **03** (2019) 016 [[arXiv:1811.02571](#)] [[INSPIRE](#)].
- [29] A. Joshi and A. Klemm, *Swampland Distance Conjecture for One-Parameter Calabi-Yau Threefolds*, *JHEP* **08** (2019) 086 [[arXiv:1903.00596](#)] [[INSPIRE](#)].
- [30] N. Gendler and I. Valenzuela, *Merging the weak gravity and distance conjectures using BPS extremal black holes*, *JHEP* **01** (2021) 176 [[arXiv:2004.10768](#)] [[INSPIRE](#)].

- [31] E. Palti, *Stability of BPS states and weak coupling limits*, *JHEP* **08** (2021) 091 [[arXiv:2107.01539](#)] [[INSPIRE](#)].
- [32] T.W. Grimm, *Moduli space holography and the finiteness of flux vacua*, *JHEP* **10** (2021) 153 [[arXiv:2010.15838](#)] [[INSPIRE](#)].
- [33] T.W. Grimm, J. Monnee and D. van de Heisteeg, *Bulk reconstruction in moduli space holography*, *JHEP* **05** (2022) 010 [[arXiv:2103.12746](#)] [[INSPIRE](#)].
- [34] B. Bastian, T.W. Grimm and D. van de Heisteeg, *Modeling General Asymptotic Calabi-Yau Periods*, [arXiv:2105.02232](#) [[INSPIRE](#)].
- [35] T.W. Grimm, C. Li and I. Valenzuela, *Asymptotic Flux Compactifications and the Swampland*, *JHEP* **06** (2020) 009 [Erratum *ibid.* **01** (2021) 007] [[arXiv:1910.09549](#)] [[INSPIRE](#)].
- [36] B. Bastian, T.W. Grimm and D. van de Heisteeg, *Engineering Small Flux Superpotentials and Mass Hierarchies*, [arXiv:2108.11962](#) [[INSPIRE](#)].
- [37] T.W. Grimm, E. Plauschinn and D. van de Heisteeg, *Moduli stabilization in asymptotic flux compactifications*, *JHEP* **03** (2022) 117 [[arXiv:2110.05511](#)] [[INSPIRE](#)].
- [38] A. Brunyate, *A modular compactification of the space of elliptic  $k3$  surfaces*, Ph.D. Thesis, University of Georgia, U.S.A. (2015).
- [39] V. Alexeev, A. Brunyate and P. Engel, *Compactifications of moduli of elliptic  $k3$  surfaces: stable pair and toroidal*, [arXiv:2002.07127](#).
- [40] K. Ascher and D. Bejleri, *Compact moduli of elliptic  $k3$  surfaces*, [arXiv:1902.10686](#).
- [41] Y. Odaka and Y. Oshima, *Collapsing  $K3$  surfaces, Tropical geometry and Moduli compactifications of Satake, Morgan-Shalen type*, [arXiv:1810.07685](#) [[INSPIRE](#)].
- [42] Y. Odaka, *PL density invariant for type-II degenerating  $K3$  surfaces, Moduli compactification and hyperKähler metrics*, [arXiv:2010.00416](#) [[INSPIRE](#)].
- [43] B. Heidenreich, M. Reece and T. Rudelius, *The Weak Gravity Conjecture and Emergence from an Ultraviolet Cutoff*, *Eur. Phys. J. C* **78** (2018) 337 [[arXiv:1712.01868](#)] [[INSPIRE](#)].
- [44] P. Corvilain, T.W. Grimm and I. Valenzuela, *The Swampland Distance Conjecture for Kähler moduli*, *JHEP* **08** (2019) 075 [[arXiv:1812.07548](#)] [[INSPIRE](#)].
- [45] A. Strominger, *Massless black holes and conifolds in string theory*, *Nucl. Phys. B* **451** (1995) 96 [[hep-th/9504090](#)] [[INSPIRE](#)].
- [46] R. Friedman and D. Morrison, *The birational geometry of degenerations: An overview*, *Progr. Math.* **29** (1983) 1.
- [47] V. Kulikov, *Degenerations of  $K3$  surfaces and Enriques surfaces*, *Math. USSR Izv.* **11** (1977) 957.
- [48] V. Kulikov, *On modifications of degenerations of surfaces with  $\kappa = 0$* , *Math. USSR Izv.* **17** (1981) 339.
- [49] U. Persson and H. Pinkham, *Degeneration of surfaces with trivial canonical bundle*, *Annals Math.* **113** (1981) 45.
- [50] U. Persson, *On degenerations of algebraic surfaces*, *Mem. Am. Math. Soc.* **11** (1977) 189.
- [51] D.R. Morrison and C. Vafa, *Compactifications of  $F$ -theory on Calabi-Yau threefolds. 1*, *Nucl. Phys. B* **473** (1996) 74 [[hep-th/9602114](#)] [[INSPIRE](#)].

- [52] D.R. Morrison and C. Vafa, *Compactifications of F-theory on Calabi-Yau threefolds. 2*, *Nucl. Phys. B* **476** (1996) 437 [[hep-th/9603161](#)] [[INSPIRE](#)].
- [53] P.S. Aspinwall and D.R. Morrison, *Point-like instantons on K3 orbifolds*, *Nucl. Phys. B* **503** (1997) 533 [[hep-th/9705104](#)] [[INSPIRE](#)].
- [54] A. Clingher and J.W. Morgan, *Mathematics underlying the F-theory / Heterotic string duality in eight-dimensions*, *Commun. Math. Phys.* **254** (2005) 513 [[math/0308106](#)] [[INSPIRE](#)].
- [55] O. DeWolfe, T. Hauer, A. Iqbal and B. Zwiebach, *Uncovering the symmetries on  $[p, q]$  seven-branes: Beyond the Kodaira classification*, *Adv. Theor. Math. Phys.* **3** (1999) 1785 [[hep-th/9812028](#)] [[INSPIRE](#)].
- [56] A. Malmendier and D.R. Morrison, *K3 surfaces, modular forms, and non-geometric heterotic compactifications*, *Lett. Math. Phys.* **105** (2015) 1085 [[arXiv:1406.4873](#)] [[INSPIRE](#)].
- [57] F.A. Cachazo and C. Vafa, *Type I' and real algebraic geometry*, [hep-th/0001029](#) [[INSPIRE](#)].
- [58] A. Font, B. Fraiman, M. Graña, C.A. Núñez and H.P. De Freitas, *Exploring the landscape of heterotic strings on  $T^d$* , *JHEP* **10** (2020) 194 [[arXiv:2007.10358](#)] [[INSPIRE](#)].
- [59] A. Bedroya, Y. Hamada, M. Montero and C. Vafa, *Compactness of Brane Moduli and the String Lamppost Principle in  $d > 6$* , *JHEP* **02** (2022) 082 [[arXiv:2110.10157](#)] [[INSPIRE](#)].
- [60] M.R. Gaberdiel and B. Zwiebach, *Exceptional groups from open strings*, *Nucl. Phys. B* **518** (1998) 151 [[hep-th/9709013](#)] [[INSPIRE](#)].
- [61] O. DeWolfe and B. Zwiebach, *String junctions for arbitrary Lie algebra representations*, *Nucl. Phys. B* **541** (1999) 509 [[hep-th/9804210](#)] [[INSPIRE](#)].
- [62] G. Kempf, F. Knudsen, D. Mumford and B. Saint-Donat, *Toroidal embeddings I*, *Lecture Notes in Math.* **339** (1973).
- [63] A. Sen, *F theory and orientifolds*, *Nucl. Phys. B* **475** (1996) 562 [[hep-th/9605150](#)] [[INSPIRE](#)].
- [64] A. Clingher, R. Donagi and M. Wijnholt, *The Sen Limit*, *Adv. Theor. Math. Phys.* **18** (2014) 613 [[arXiv:1212.4505](#)] [[INSPIRE](#)].
- [65] O. DeWolfe, T. Hauer, A. Iqbal and B. Zwiebach, *Uncovering infinite symmetries on  $[p, q]$  7-branes: Kac-Moody algebras and beyond*, *Adv. Theor. Math. Phys.* **3** (1999) 1835 [[hep-th/9812209](#)] [[INSPIRE](#)].
- [66] J. Gu and H. Jockers, *Nongeometric F-theory-heterotic duality*, *Phys. Rev. D* **91** (2015) 086007 [[arXiv:1412.5739](#)] [[INSPIRE](#)].
- [67] I. García-Etxebarria, D. Lüst, S. Massai and C. Mayrhofer, *Ubiquity of non-geometry in heterotic compactifications*, *JHEP* **03** (2017) 046 [[arXiv:1611.10291](#)] [[INSPIRE](#)].
- [68] Y. Kimura, *Nongeometric heterotic strings and dual F-theory with enhanced gauge groups*, *JHEP* **02** (2019) 036 [[arXiv:1810.07657](#)] [[INSPIRE](#)].
- [69] H.-C. Kim, G. Shiu and C. Vafa, *Branes and the Swampland*, *Phys. Rev. D* **100** (2019) 066006 [[arXiv:1905.08261](#)] [[INSPIRE](#)].
- [70] M. Cvetič, M. Dierigl, L. Lin and H.Y. Zhang, *String Universality and Non-Simply-Connected Gauge Groups in 8d*, *Phys. Rev. Lett.* **125** (2020) 211602 [[arXiv:2008.10605](#)] [[INSPIRE](#)].
- [71] A. Font, B. Fraiman, M. Graña, C.A. Núñez and H. Parra De Freitas, *Exploring the landscape of CHL strings on  $T^d$* , *JHEP* **08** (2021) 095 [[arXiv:2104.07131](#)] [[INSPIRE](#)].

- [72] M. Cvetič, M. Dierigl, L. Lin and H.Y. Zhang, *Gauge group topology of 8D Chaudhuri-Hockney-Lykken vacua*, *Phys. Rev. D* **104** (2021) 086018 [[arXiv:2107.04031](#)] [[INSPIRE](#)].
- [73] M. Bershadsky, K.A. Intriligator, S. Kachru, D.R. Morrison, V. Sadov and C. Vafa, *Geometric singularities and enhanced gauge symmetries*, *Nucl. Phys. B* **481** (1996) 215 [[hep-th/9605200](#)] [[INSPIRE](#)].
- [74] L.J. Dixon, V. Kaplunovsky and J. Louis, *Moduli dependence of string loop corrections to gauge coupling constants*, *Nucl. Phys. B* **355** (1991) 649 [[INSPIRE](#)].
- [75] J.A. Harvey and G.W. Moore, *Algebras, BPS states, and strings*, *Nucl. Phys. B* **463** (1996) 315 [[hep-th/9510182](#)] [[INSPIRE](#)].
- [76] C. Bachas, C. Fabre, E. Kiritsis, N.A. Obers and P. Vanhove, *Heterotic / type-I duality and D-brane instantons*, *Nucl. Phys. B* **509** (1998) 33 [[hep-th/9707126](#)] [[INSPIRE](#)].
- [77] E. Kiritsis and N.A. Obers, *Heterotic type-I duality in  $D < 10$ -dimensions, threshold corrections and D instantons*, *JHEP* **10** (1997) 004 [[hep-th/9709058](#)] [[INSPIRE](#)].
- [78] W. Lerche and S. Stieberger, *Prepotential, mirror map and F-theory on K3*, *Adv. Theor. Math. Phys.* **2** (1998) 1105 [Erratum *ibid.* **3** (1999) 1199] [[hep-th/9804176](#)] [[INSPIRE](#)].
- [79] W. Lerche, S. Stieberger and N.P. Warner, *Quartic gauge couplings from K3 geometry*, *Adv. Theor. Math. Phys.* **3** (1999) 1575 [[hep-th/9811228](#)] [[INSPIRE](#)].
- [80] K. Foerger and S. Stieberger, *Higher derivative couplings and heterotic type-I duality in eight-dimensions*, *Nucl. Phys. B* **559** (1999) 277 [[hep-th/9901020](#)] [[INSPIRE](#)].
- [81] W. Lerche, S. Stieberger and N.P. Warner, *Prepotentials from symmetric products*, *Adv. Theor. Math. Phys.* **3** (1999) 1613 [[hep-th/9901162](#)] [[INSPIRE](#)].
- [82] C. Bachas and E. Kiritsis,  *$F(4)$  terms in  $N = 4$  string vacua*, *Nucl. Phys. B Proc. Suppl.* **55** (1997) 194 [[hep-th/9611205](#)] [[INSPIRE](#)].
- [83] M. Billó, L. Ferro, M. Frau, L. Gallot, A. Lerda and I. Pesando, *Exotic instanton counting and heterotic/type-I-prime duality*, *JHEP* **07** (2009) 092 [[arXiv:0905.4586](#)] [[INSPIRE](#)].
- [84] F. Fucito, J.F. Morales and R. Poghossian, *Exotic prepotentials from  $D(-1)D7$  dynamics*, *JHEP* **10** (2009) 041 [[arXiv:0906.3802](#)] [[INSPIRE](#)].
- [85] D.J. Gross and J.H. Sloan, *The Quartic Effective Action for the Heterotic String*, *Nucl. Phys. B* **291** (1987) 41 [[INSPIRE](#)].
- [86] M. de Roo, H. Suelmann and A. Wiedemann, *The supersymmetric effective action of the heterotic string in ten-dimensions*, *Nucl. Phys. B* **405** (1993) 326 [[hep-th/9210099](#)] [[INSPIRE](#)].
- [87] L.J. Romans and N.P. Warner, *Some Supersymmetric Counterparts of the Lorentz Chern-Simons Term*, *Nucl. Phys. B* **273** (1986) 320 [[INSPIRE](#)].
- [88] E. Bergshoeff and M. de Roo, *Supersymmetric Chern-Simons Terms in Ten-dimensions*, *Phys. Lett. B* **218** (1989) 210 [[INSPIRE](#)].
- [89] B. Zwiebach, *Curvature Squared Terms and String Theories*, *Phys. Lett. B* **156** (1985) 315 [[INSPIRE](#)].
- [90] M.B. Green, J.H. Schwarz and E. Witten, *Superstring Theory*, Vol. 2, Cambridge University Press, Cambridge, U.K. (1988).

- [91] M. Awada and P.K. Townsend,  $d = 8$  Maxwell-Einstein supergravity, *Phys. Lett. B* **156** (1985) 51 [INSPIRE].
- [92] W. Lerche, *Elliptic Index and Superstring Effective Actions*, *Nucl. Phys. B* **308** (1988) 102 [INSPIRE].
- [93] K. Forger and S. Stieberger, *String amplitudes and  $N = 2$ ,  $d = 4$  prepotential in heterotic  $K3 \times T^2$  compactifications*, *Nucl. Phys. B* **514** (1998) 135 [hep-th/9709004] [INSPIRE].
- [94] J. Louis, J. Sonnenschein, S. Theisen and S. Yankielowicz, *Nonperturbative properties of heterotic string vacua compactified on  $K3 \times T^2$* , *Nucl. Phys. B* **480** (1996) 185 [hep-th/9606049] [INSPIRE].
- [95] R.E. Borcherds, *The monster lie algebra*, *Adv. Math.* **83** (1990) 30.
- [96] B. de Wit, V. Kaplunovsky, J. Louis and D. Lüüst, *Perturbative couplings of vector multiplets in  $N = 2$  heterotic string vacua*, *Nucl. Phys. B* **451** (1995) 53 [hep-th/9504006] [INSPIRE].
- [97] E. Kiritsis, C. Kounnas, P.M. Petropoulos and J. Rizos, *Universality properties of  $N = 2$  and  $N = 1$  heterotic threshold corrections*, *Nucl. Phys. B* **483** (1997) 141 [hep-th/9608034] [INSPIRE].
- [98] V. Kaplunovsky and J. Louis, *On gauge couplings in string theory*, *Nucl. Phys. B* **444** (1995) 191 [hep-th/9502077] [INSPIRE].
- [99] G. Lopes Cardoso, G. Curio and D. Lüüst, *Perturbative couplings and modular forms in  $N = 2$  string models with a Wilson line*, *Nucl. Phys. B* **491** (1997) 147 [hep-th/9608154] [INSPIRE].
- [100] B. Heidenreich, M. Reece and T. Rudelius, *The Weak Gravity Conjecture and axion strings*, *JHEP* **11** (2021) 004 [arXiv:2108.11383] [INSPIRE].
- [101] M. Billó, M. Frau, L. Gallot, A. Lerda and I. Pesando, *Classical solutions for exotic instantons?*, *JHEP* **03** (2009) 056 [arXiv:0901.1666] [INSPIRE].
- [102] M. Eichler and D. Zagier, *The Theory of Jacobi Forms*, Birkhäuser, Basel, Swiss (1995).
- [103] V.A. Gritsenko and V.V. Nikulin, *The Igusa modular forms and ‘the simplest’ Lorentzian Kac-Moody algebras*, [alg-geom/9603010](#) [INSPIRE].
- [104] V.A. Gritsenko and V.V. Nikulin, *Automorphic forms and Lorentzian Kac-Moody algebras. Part 1*, [alg-geom/9610022](#).
- [105] V.A. Gritsenko and V.V. Nikulin, *Automorphic forms and Lorentzian Kac-Moody algebras. Part 2*, [alg-geom/9611028](#) [INSPIRE].
- [106] P. Mayr and S. Stieberger, *Moduli dependence of one loop gauge couplings in  $(0,2)$  compactifications*, *Phys. Lett. B* **355** (1995) 107 [hep-th/9504129] [INSPIRE].
- [107] A. Dabholkar, S. Murthy and D. Zagier, *Quantum Black Holes, Wall Crossing, and Mock Modular Forms*, [arXiv:1208.4074](#) [INSPIRE].
- [108] R. Dijkgraaf, G.W. Moore, E.P. Verlinde and H.L. Verlinde, *Elliptic genera of symmetric products and second quantized strings*, *Commun. Math. Phys.* **185** (1997) 197 [hep-th/9608096] [INSPIRE].