



The Compact Muon Solenoid Experiment  
**Conference Report**

Mailing address: CMS CERN, CH-1211 GENEVA 23, Switzerland



17 October 2021 (v3, 03 November 2021)

# Measurement of the Higgs boson production in association with top quarks in final states with multileptons using data taken during the Run 2 of the LHC with CMS

Clara Ramon Alvarez for the CMS Collaboration

## Abstract

The production of the Higgs boson in association with a pair of top-antitop quarks is studied using final states with multiple leptons in proton-proton collisions collected by the CMS experiment at a  $\sqrt{s} = 13$  TeV centre-of-mass energy, during the Run 2 of the LHC. Machine learning and matrix element techniques are used to enhance the sensitivity of the analysis by discriminating signal and backgrounds. The measured production rates are used to determine constraints on the Yukawa coupling of the Higgs boson to the top quark.

Presented at *EPS-HEP2021 European Physical Society Conference on High Energy Physics*

## $t\bar{t}H$ measurement in final states with multileptons using data taken during the Run 2 of the LHC with CMS

---

**Clara Ramon Alvarez (on behalf of the CMS Collaboration)<sup>a,\*</sup>**

<sup>a</sup>*University of Oviedo,  
Oviedo, Spain*

*E-mail:* [clara.ramon.alvarez@cern.ch](mailto:clara.ramon.alvarez@cern.ch)

The production of the Higgs boson in association with a pair of top-antitop quarks is studied using final states with multiple leptons in proton-proton collisions collected by the CMS experiment at a  $\sqrt{s} = 13$  TeV centre-of-mass energy, during the Run 2 of the LHC. Machine learning and matrix element techniques are used to enhance the sensitivity of the analysis by discriminating signal and backgrounds. The measured production rates are used to determine constraints on the Yukawa coupling of the Higgs boson to the top quark.

*European Physical Society conference on high energy physics 2021 Online conference  
July 26-30, 2021  
Hamburg, Germany (virtual meeting)*

---

\*Speaker

## 1. Introduction

Higgs boson (H) was discovered by CMS [1, 2] and ATLAS [3] in 2012. In order to determine whether the observed Higgs boson is consistent with the Standard Model (SM) predictions, high-precision measurements are needed. One such properties is the Yukawa coupling of the Higgs boson to fermions ( $y_f$ ). In the SM  $y_f$  is proportional to the mass of the fermion, hence, studying the coupling of the top quark, the heaviest fermion known to date, to the Higgs boson is a good handle to measure this property. The Yukawa coupling of the Higgs to the top quark ( $y_t$ ) is of order unity and deviations of  $y_t$  from the SM prediction would indicate the presence of physics beyond the SM. The measurement of the Higgs boson production rate in association with a top quark pair ( $t\bar{t}H$ ) is of special interest to study this coupling. It allows a model-independent determination of the magnitude of the  $y_t$ . To determine the sign of the coupling it is also necessary to study the associated production of a Higgs boson with a single top quark (tH).

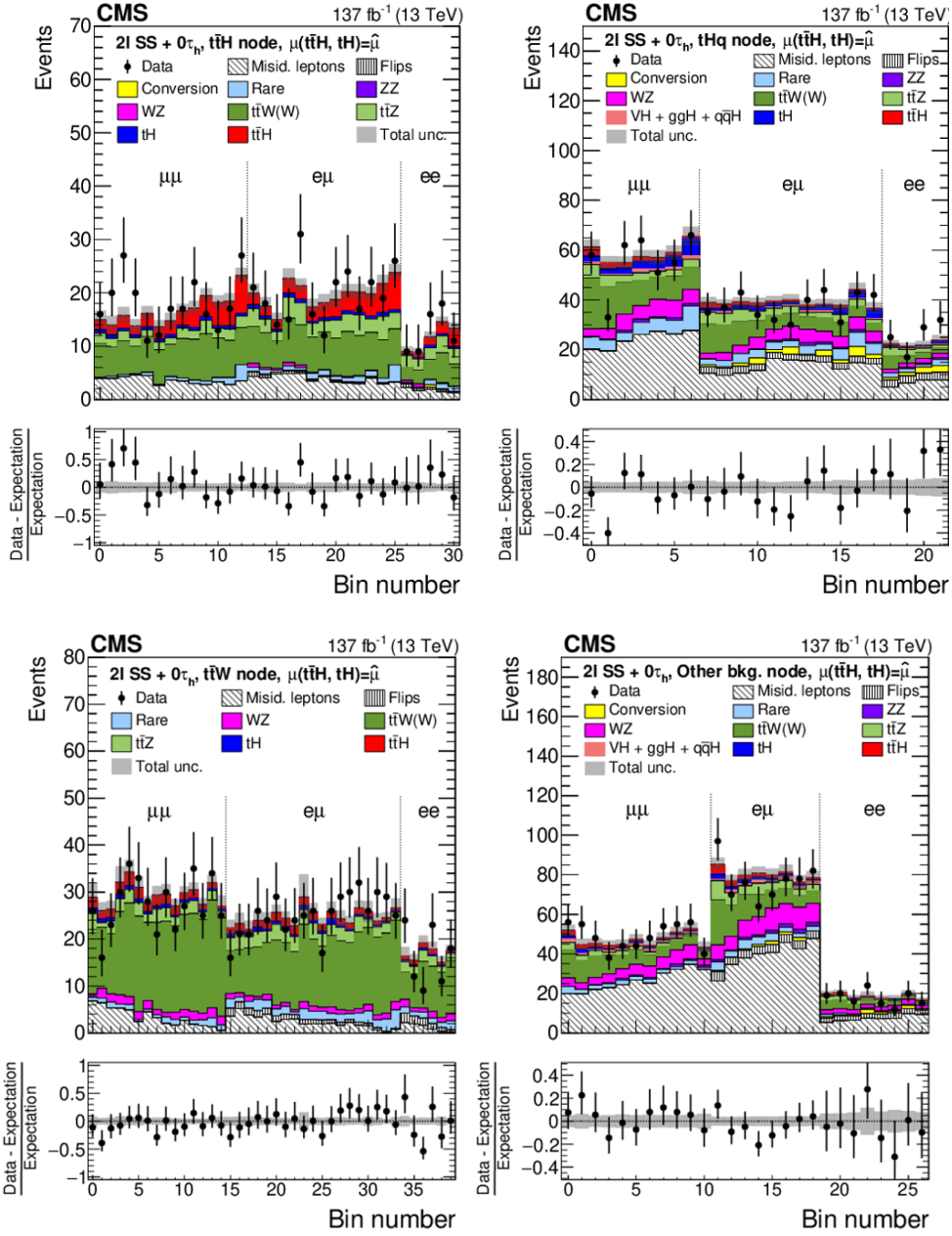
In this study the measurement of the  $t\bar{t}H$  and tH production rates in final states with multiple electrons, muons and hadronically decaying taus is presented. These final states target the Higgs boson decays to WW, ZZ and  $\tau\tau$ . The measurement was performed using the data recorded by the CMS [5] experiment in pp collisions at  $\sqrt{s} = 13$  TeV during the Run 2 of the LHC, and corresponds to an integrated luminosity of  $137 \text{ fb}^{-1}$ .

## 2. Analysis Strategy

Events are classified according to the number of leptons ( $\ell$  meaning e and  $\mu$ ) and taus in the final state. Ten non-overlapping categories are defined:  $2\ell ss + 0\tau$ ,  $3\ell + 0\tau$ ,  $2\ell ss + 1\tau$ ,  $2\ell os + 1\tau$ ,  $1\ell + 2\tau$ ,  $4\ell + 0\tau$ ,  $3\ell + 1\tau$ ,  $2\ell + 2\tau$ ,  $1\ell + 1\tau$  and  $0\ell + 2\tau$ , where *ss* denotes same sign leptons and *os* denotes opposite sign leptons. In each category events are selected with specific requirements to have a more favourable signal-to-background ratio. Requirements on the number of jets and b-tagged jets are applied in all categories depending on the expected jet and b jet multiplicity in  $t\bar{t}H$  events. In categories sensitive to tH the requirements on the number of jets and b-tagged jets is extended in order to target also tH events, this is done by selecting events with a jet in the forward region. In some categories additional vetoes on the invariant masses of the reconstructed lepton pairs are added to exclude background events.

The main backgrounds after imposing the selection are  $t\bar{t}Z$  and  $t\bar{t}W$  which are estimated with MC simulation and constrained using dedicated control regions. On the other hand, the most important reducible background is coming from mis-identified leptons. This background is estimated using the misidentification probability method [4]. This background is highly suppressed by using a dedicated multivariate analysis (MVA) classifier in order to select prompt muons coming from H and vector boson decays.

In order to enhance the separation of the signal processes MVA techniques are used on top of the previous selection. In  $2\ell ss + 2\tau$ ,  $2\ell ss + 0\tau$  and  $3\ell + 0\tau$ , which are sensitive both to  $t\bar{t}H$  and tH, analytical neural networks (ANNs) are used. In other, less sensitive, channels boosted decision trees (BDTs) are used. Events are further categorized using the lepton flavour or the b-tagged jet multiplicity to increase the sensitivity. Fig. 1 shows the output nodes of the ANN on the  $2\ell ss + 0\tau$  channel, which is the most sensitive one.



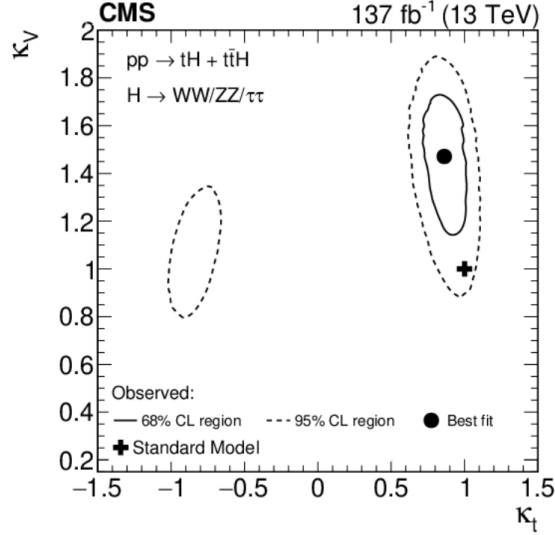
**Figure 1:** Output nodes of the ANN in  $2\ell SS + 0\tau$  category. From left to right and up to bottom node targeting:  $t\bar{t}H$ ,  $tH$ ,  $t\bar{t}W$  and the rest of backgrounds. Figures take from [6].

### 3. Results

A Maximum Likelihood fit is performed using as parameter of interest the signal strength. The output of the MVA in each category of each channel as well as the control regions are used as input to the fit. The production rate obtained for  $t\bar{t}H$  production is  $0.92^{+0.26}_{-0.23}$  times its SM expected value. The production rate for  $tH$  process is  $5.67^{+4.1}_{-4.0}$  times its SM expected value. This result is in good agreement with the SM. This yields an observed (expected) significance for  $t\bar{t}H$  production of 5.2

(4.7) standard deviations.

The measurement is used to constrain the coupling of the Higgs boson to the top quark. The production rates of the  $t\bar{t}H$  and  $tH$  processes are parametrized as a function of  $\kappa_t = \frac{y_t}{y_t^{SM}}$  and  $\kappa_V = \frac{y_V}{y_V^{SM}}$ . The  $\kappa_t$  parameter is constrained, at 95% confidence level, to be within  $-0.9 < \kappa_t < -0.7$  or  $0.7 < \kappa_t < 1.1$  as is shown in fig. 2. The best fit is in good agreement with the SM and 95 % CL while the inverted top coupling scenario is excluded at more than 68 % CL.



**Figure 2:** Variation of the likelihood function  $\mathcal{L}$ , as a function of  $\kappa_t$  and  $\kappa_V$ . Figure taken from [6].

## References

- [1] CMS Collaboration, “Observation of a new boson at a mass of 125 GeV with the CMS experiment at the LHC”, Phys. Lett. B 716(2012) 30, doi:10.1016/j.physletb.2012.08.021, arXiv:1207.7235.
- [2] CMS Collaboration, “Observation of a new boson with mass near 125 GeV in pp collisions at  $\sqrt{s}=7$  and 8 TeV”, JHEP 06 (2013) 081, arXiv:1303.4571.
- [3] ATLAS Collaboration, “Observation of a new particle in the search for the standard-model Higgs boson with the ATLAS detector at the LHC”, Phys. Lett. B 716(2012) 1, doi:10.1016/j.physletb.2012.08.020, arXiv:1207.7214.
- [4] CMS Collaboration, “Evidence for associated production of a Higgs boson with a top quark pair in final states with electrons, muons, and hadronically decaying  $\tau$  leptons at  $\sqrt{s}$  13 TeV”, JHEP 08 (2018) 066, arXiv:1803.05485.
- [5] CMS Collaboration, “The CMS Experiment at the CERN LHC”, JINST 3 S08004 (2008), doi:10.1088/1748-0221/3/08/S08004

- [6] CMS Collaboration, “Measurement of the Higgs boson production rate in association with top quarks in final states with electrons, muons, and hadronically decaying tau leptons at  $\sqrt{s}=13$  TeV”, Eur. Phys. J. C 81 (2021) 4, 378. arXiv:2011.03652