

Anomalous couplings in WZ production beyond NLO QCD

Robin Roth^{*†}

Institute for Theoretical Physics, KIT, 76128 Karlsruhe, Germany

E-mail: robin.roth@kit.edu

Francisco Campanario

Theory Division, IFIC, University of Valencia-CSIC, E-46980 Paterna, Valencia, Spain

E-mail: francisco.campanario@ific.uv.es

Sebastian Sapeta

CERN PH-TH, CH-1211, Geneva 23, Switzerland

E-mail: sebastian.sapeta@cern.ch

Dieter Zeppenfeld

Institute for Theoretical Physics, KIT, 76128 Karlsruhe, Germany

E-mail: dieter.zeppenfeld@kit.edu

We study WZ production with anomalous couplings at \bar{n} NLO QCD using the LoopSim method in combination with the Monte Carlo program VBFNLO. Higher order corrections to WZ production are dominated by additional hard jet radiation. Those contributions are insensitive to anomalous couplings and should thus be removed in analyses. We do this using a dynamical jet veto based on the transverse energy of the QCD and EW final state particles. This removes jet dominated events without introducing problematic logs like a fixed p_T jet veto.

Fourth Annual Large Hadron Collider Physics

13-18 June 2016

Lund, Sweden

^{*}Speaker.

[†]KA-TP-32-2016

1. Introduction

The production of two heavy vector bosons is an interesting process, as it allows to study the interactions between the gauge bosons. Leptonic decays of the vector bosons can be used to discriminate backgrounds and get precise measurements of the kinematics. Searches for new physics include new resonances decaying to vector boson pairs and changes to their couplings due to new particles in loops. Those can appear in tails of distributions or as modifications in angular distributions sensitive to spin. To measure diboson production and search for deviations from the Standard Model (SM) high center of mass energies and high luminosities are required, such that the most recent LHC upgrades promise to enhance those analyses.

In this contribution, we study WZ production as a representative diboson production process. We calculate NLO QCD corrections to WZ and WZj production with VBFNLO and combine them to get \bar{n} NLO accuracy using the LoopSim approach [1]. This improves the prediction especially for high- p_T vector bosons. Recently a calculation of the inclusive cross section of WZ production at NNLO QCD was reported in Ref. [2], but there are no differential distributions available yet.¹

We study Anomalous Couplings (AC) using an Effective Field Theory (EFT) approach. This allows to parametrize deviations from the Standard Model (SM) interactions, especially in triple and quartic gauge couplings in a general way without choosing a specific model. Effects of AC are most visible in the region of high invariant-mass diboson pairs with high transverse momentum of the final state particles. In particular in the high- p_T region, the LoopSim approach should approximate the full NNLO corrections closely.

WZ production has been measured at the LHC in several decay channels. The fully leptonic decay, as studied in Ref. [3, 4, 5, 6, 7], has little background, but at the same time the smallest cross section. Semi-leptonic final states, [8, 9], have a larger cross sections but suffer from backgrounds due to top production and single-vector-boson + jets. Measuring the cross section allows to set limits on anomalous triple gauge couplings, as many of the analyses do. For details on diboson measurements see also the contributions by S.L. Barnes and N. Woods in these proceedings.

2. Calculational setup

For the simulation, we use VBFNLO [10, 11, 12] in combination with LoopSim [1]. The setup is comparable to previous work with LoopSim on WZ [13], WW [14] and ZZ production [15]. LoopSim generates a merged sample of WZ@NLO and WZj@NLO [16] to give us WZ@ \bar{n} NLO. For the study of AC, we are interested in phase space regions with high transverse momentum and high invariant mass of electroweak particles. These can get large contributions from additional QCD radiation of $\mathcal{O}(\alpha_s \ln^2 p_{T\text{jet}}/m_Z)$, which are included in LoopSim. Compared to the full NNLO calculation, LoopSim misses the finite 2-loop contributions. Those are expected to be on the level of a few percent, since they are suppressed by α_s^2 and are not enhanced, like some real emission contributions. Due to the missing contributions the prediction of the total cross section, the low- p_T phase space region and the scale dependence is only NLO.

¹On NNLO QCD calculations of diboson production see the contribution by S. Kallweit, “NNLO di-boson production.”

2.1 Anomalous Couplings

To parametrize AC, we use the set of dimension-6 operators based on the HISZ basis [17] as updated in Ref. [18]. They extend the SM via $\mathcal{L} = \mathcal{L}_{\text{SM}} + \sum_i \frac{f_i}{\Lambda^2} \mathcal{O}_i$. Assuming C and P invariance, only three operators contribute to the WWZ vertex:

$$\mathcal{O}_W = (D_\mu \Phi)^\dagger \widehat{W}^{\mu\nu} (D_\nu \Phi), \quad (2.1)$$

$$\mathcal{O}_B = (D_\mu \Phi)^\dagger \widehat{B}^{\mu\nu} (D_\nu \Phi), \quad (2.2)$$

$$\mathcal{O}_{WWW} = \text{Tr} \left[\widehat{W}_{\mu\nu} \widehat{W}^{\nu\rho} \widehat{W}_\rho^\mu \right]. \quad (2.3)$$

We focus on the \mathcal{O}_W operator for this work. It is a suitable representative for AC as it leads to a term with non-SM Lorentz structure in the WWZ vertex. To get meaningful limits on AC, one has to consider a complete set of operators, which affect a given observable, including correlations between operators.

Diboson production processes are competitive in limiting dimension 6 operators and are therefore included in global fits of AC limits, like Refs. [19, 20, 21]. Our values used for the couplings are in the allowed region of Ref. [19] and represent typical values current measurements are sensitive to.

2.2 Validity of EFT approach

Effective Field Theory (EFT) for triple gauge couplings assumes an expansion in $\frac{f}{\Lambda^2}$. This depends on both the coupling of new physics as well as its energy scale. The expansion is only valid if the scale of the considered observable is smaller than the new physics scale entering Λ .

For high invariant masses, the EFT operators violate unitarity of the S-matrix. This is a sign that the EFT approach is no longer valid and should be replaced by a UV complete model. To still get physical predications, one can apply a unitarization procedure. We use the form factor

$$FF = \left(1 + \frac{m_{WZ}}{\Lambda_{\text{FF}}^2} \right)^{-n}, \quad \text{with } \Lambda_{\text{FF}} = 2 \text{ TeV and } n = 1. \quad (2.4)$$

The value for the form factor scale is determined with the VBFNLO form factor tool [22], such that the operator does not lead to unitarity violation in $2 \rightarrow 2$ scattering. The exponent n is chosen to cancel the leading divergence of the EFT operator. Using the form factor tool the scale Λ_{FF} is fixed, such that this description leaves no free parameter in the unitarization scheme. For most plots, we will focus on phase space regions significantly below Λ_{FF} where neither the form factor nor most unitarization procedures would have a visible effect.

Even below the scale of unitarity violation, there is an ambiguity in how to make predictions using an EFT. In the calculation of the squared matrix element $|\mathcal{M}|^2$, there are interference terms between the SM and AC as well as purely AC terms. If one considers an amplitude with contributions from AC operators of dimension 6 and dimension 8, the terms are:

$$\mathcal{M} = \mathcal{M}_{\text{SM}} + \underbrace{\mathcal{M}_{\text{AC}}^{d=6}}_{1/\Lambda^2} + \underbrace{\mathcal{M}_{\text{AC}}^{d=8}}_{1/\Lambda^4} + \mathcal{O}(\Lambda^{-6}) \quad (2.5)$$

$$|\mathcal{M}|^2 = \underbrace{|\mathcal{M}_{\text{SM}}|^2}_{1/\Lambda^0} + \underbrace{2\text{Re}\mathcal{M}_{\text{SM}}^* \mathcal{M}_{\text{AC}}^{d=6}}_{1/\Lambda^2} + \underbrace{|\mathcal{M}_{\text{AC}}^{d=6}|^2}_{1/\Lambda^4} + \underbrace{2\text{Re}\mathcal{M}_{\text{SM}}^* \mathcal{M}_{\text{AC}}^{d=8}}_{1/\Lambda^4} + \underbrace{|\mathcal{M}_{\text{AC}}^{d=8}|^2}_{1/\Lambda^8} + \mathcal{O}(\Lambda^{-6}) \quad (2.6)$$

We include both the $\mathcal{M}_{\text{SM}}^* \mathcal{M}_{\text{AC}}^{d=6}$ and the $|\mathcal{M}_{\text{AC}}^{d=6}|^2$ term in our calculation. By naive power counting, one would assume that the latter should be considered simultaneously with dim-8 operators, that contribute via $\mathcal{M}_{\text{SM}}^* \mathcal{M}_{\text{AC}}^{d=8}$. This is in general not the case because the SM amplitude is suppressed by the weak coupling, such that $|\mathcal{M}_{\text{AC}}^{d=6}|^2$ can naturally be larger than $\mathcal{M}_{\text{SM}}^* \mathcal{M}_{\text{AC}}^{d=8}$.

Besides this size argument, there are also practical reasons to include the $|\mathcal{M}_{\text{AC}}|^2$ term. Without it, one can generate (unphysical) negative cross sections when negative interference exceeds the SM contribution.

To be independent of this ambiguity, one can restrict oneself to phase space regions where the squared term is not relevant. Based on the sign dependence of the interference, we will study in which phase space regions both terms contribute in section 3.2.

3. Numerical results

We consider the LHC at run 2 with pp collisions at 13 TeV. The jets are clustered using the anti- k_t algorithm [23] with a cone radius of $R = 0.4$. To simulate typical detector acceptance, we impose a minimal set of inclusive cuts

$$\begin{aligned} p_{Tl} &> 15\text{GeV} & p_{Tj} &> 30\text{GeV} & \cancel{E}_T &> 30\text{GeV} \\ |y_j| &< 4.5 & |\eta_l| &< 2.5 & R_{lj} &> 0.4 \\ 120\text{GeV} &> m_{ll} & &> 60\text{GeV}, \end{aligned} \quad (3.1)$$

where the m_{ll} cut is applied only to same-flavor leptons with opposite sign coming from the Z boson.

We consider decays $W \rightarrow ev_e, Z \rightarrow \mu\mu$. Adding the other leptonic final states increases the number of expected events by a factor of 4.²

For the renormalization scale μ_R and factorization scale μ_F , we use

$$\mu_0 = H_T = \frac{1}{2} \left(\sum_{\text{partons}} p_{T,i} + \sum_{W,Z} \sqrt{p_{T,i}^2 + m_i^2} \right). \quad (3.2)$$

The theoretical uncertainty is estimated using a simultaneous variation of the two scales by a factor of 2: $\mu_R = \mu_F = \{0.5, 2\} \mu_0$. We use the default values set in VBFNLO 3.0 for electroweak constants and NNPDF23 [24] for the parton distribution functions.

3.1 WZ production at \bar{n} NLO QCD

Results for WZ production at \bar{n} NLO QCD using Loopsim were first presented in Ref. [13]. As shown there, the corrections due to \bar{n} NLO on top of NLO QCD can be sizeable. A typical electroweak observable, like the p_T of the hardest lepton ($p_{Tl,\text{max}}$), is enhanced by about 25% at 300 GeV. Changes are substantially larger for observables sensitive to extra radiation. For $H_{T,\text{jets}}$, the correction is a factor of 5 at 1 TeV. These distributions are shown in fig. 1. In both cases, the corrections are outside of the scale variation.

²The factor 4 is not exact, because of small corrections due to the not-ideal reconstruction in states with identical flavors and the Pauli interference effect.

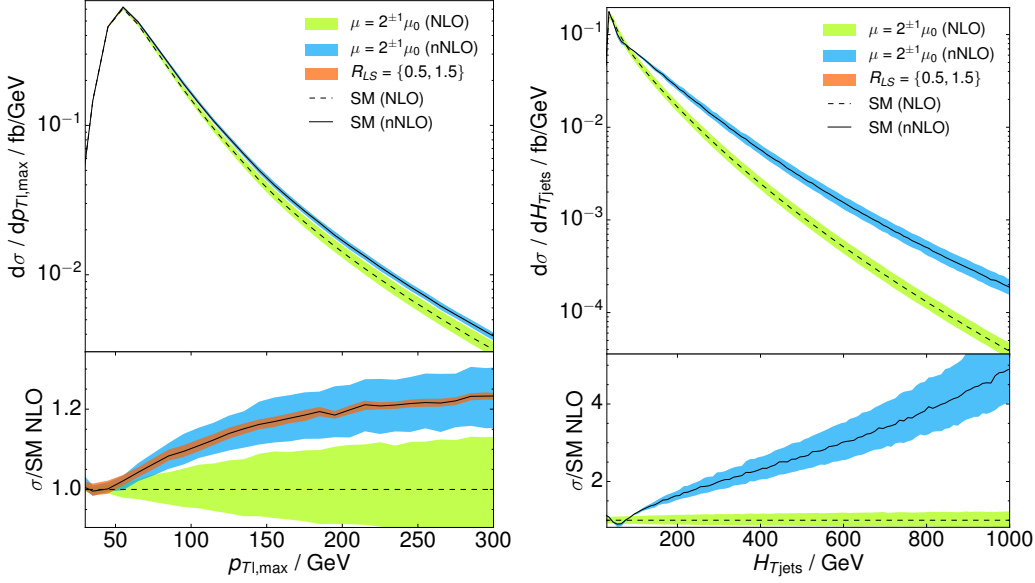


Figure 1: The $p_{T1,max}$ and $H_{T,jets}$ are shown for WZ production at NLO (dashed) and \bar{n} NLO QCD (solid). Corrections are typically below 25% as seen on the left for $p_{T1,max}$, but can be huge in observables sensitive to additional emissions, for example they reach a factor of 5 in $H_{T,jets}$ at 1 TeV. The scale variation is given as a band for NLO (green) and \bar{n} NLO (blue). For \bar{n} NLO, also the variation of the LoopSim clustering parameter R_{LS} is indicated as a band. Its influence is small for most observables and highlights phase space regions sensitive to details of the clustering.

3.2 AC at \bar{n} NLO QCD

For AC, we include both the $\mathcal{M}_{SM}^* \mathcal{M}_{AC}$ interference term as well as the $|\mathcal{M}_{AC}|^2$ term, as discussed in section 2.2. The interference term is sensitive to the sign of the AC, while the squared term is not. Which of the two terms dominated can thus be seen in distributions by looking for dependence on the coupling sign.

To show the typical effect of AC, we consider $p_{T1,max}$ at NLO QCD in fig. 2. For $p_{T1,max}$ and the chosen AC values, at around 150 GeV, the destructive interference is maximal, while above 300 GeV, the $|\mathcal{M}_{AC}|^2$ term dominates. The interference region gives access to the sign.

The corrections at \bar{n} NLO shown in fig. 1 are of comparable size to those due to AC. Therefore, an analysis based on a prediction at NLO QCD for the SM might mistake a deviation for a detection of AC, while a prediction at higher order in QCD might match the measurement. Figure 3 shows a comparison of SM \bar{n} NLO and AC NLO that are of similar size. With vBFNLO and LoopSim, predictions for AC can also be made at \bar{n} NLO accuracy. The \bar{n} NLO/NLO K-factor depends on the specific value of the anomalous coupling, such that extrapolating the SM K-factor to AC predictions gives inaccurate results. This can be seen in fig. 4.

3.3 Dynamical jet veto

In Ref. [25], we suggested a dynamical jet veto to improve the sensitivity to AC in WZj production. We use this veto and study its effect on LoopSim corrections. AC effects typically grow with the invariant mass or momentum transfer at triple gauge vertices. To enhance their signal,

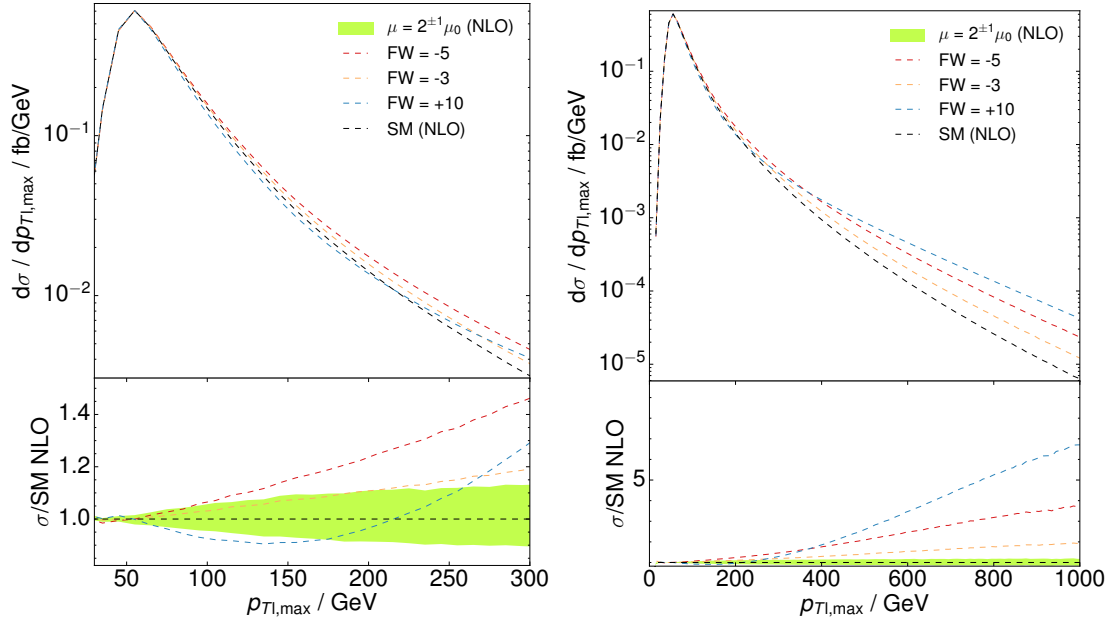


Figure 2: The effect of the AC operator \mathcal{O}_W is shown on the p_T of the leading lepton at NLO QCD for different regions of p_T . The effect grows with p_T , such that searches for AC are mostly focused in the high- p_T bins of distributions where an enhancement of the SM cross section by a factor of 5 or more is possible (right). The chosen AC values have interferences with the SM most prominent at 150 GeV (left).

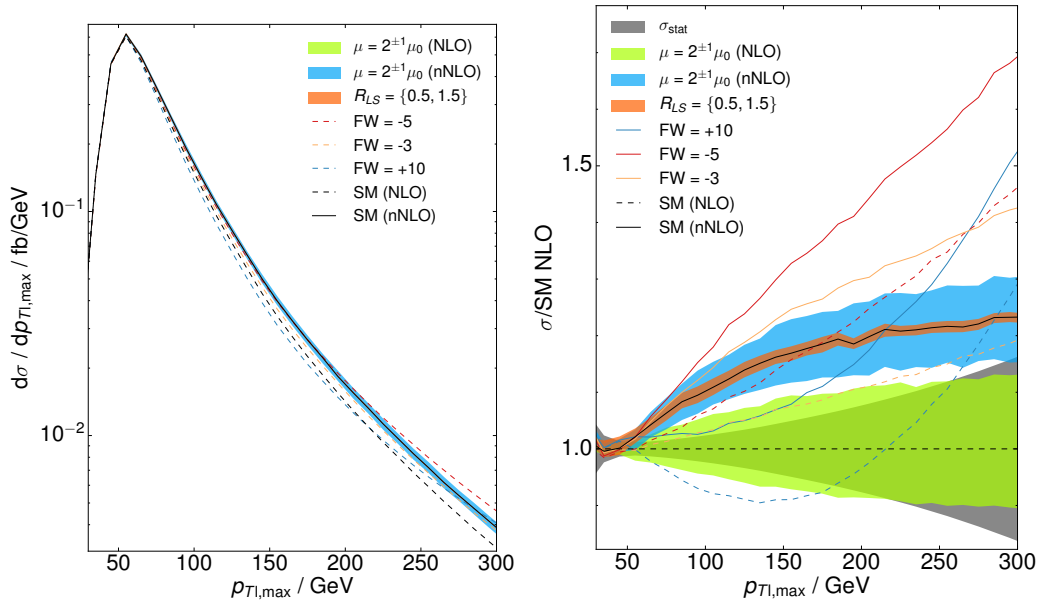


Figure 3: On the left the transverse momentum of the hardest lepton is shown. The right shows the same observable, normalized to the SM prediction at NLO QCD. As shown in fig. 1, the \bar{n} NLO corrections are on the order of 25%. Non-vanishing AC can change the cross section by the same amount. Colored dashed lines show the distribution for AC at NLO QCD, which (depending on the bins considered) give the same value as the SM \bar{n} NLO prediction. For a AC analysis, also all QCD corrections have to be taken into account, leading to the solid colored lines for AC at \bar{n} NLO QCD.

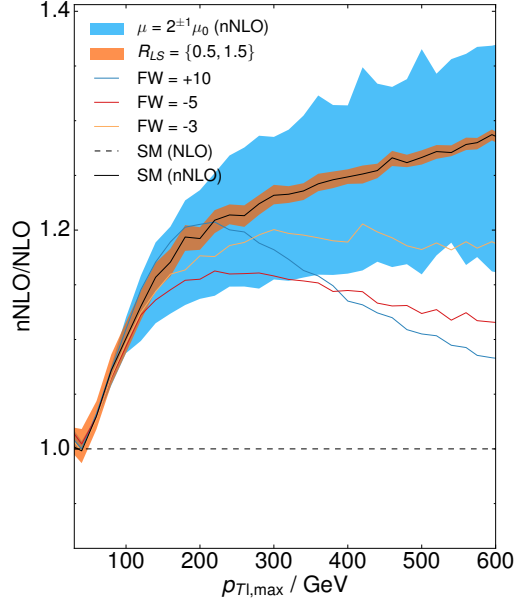


Figure 4: The ratio $(d\sigma_{\bar{n}\text{NLO}}/d\sigma_{\text{NLO}})_{\text{SM,AC}}$ for $p_{T1,\text{max}}$ is shown. This K-factor depends significantly on the value of the anomalous coupling, ranging from 1.1 to 1.3 for the bin at 600 GeV. Therefore, AC can not be accurately described by rescaling an AC prediction at NLO with a SM $\bar{n}\text{NLO}/\text{NLO}$ K-factor.

the focus is on high-invariant mass boson pairs and high transverse momentum bosons/leptons in the final state. When a high- p_T vector boson is required, this occurs about half of the time due to recoil against a jet (instead of the second vector boson). To reduce those events, one introduces a jet veto. A traditional fixed- p_T jet veto rejects all events with additional jets above a certain threshold. This introduces logarithms of the veto scale, which need to be resummed. Also this veto cuts away relevant phase space, since in very-high invariant-mass regions (for example $m_{WZ} = 1 \text{ TeV}$) most events will have additional jet radiation at 50 GeV to 100 GeV, which is soft compared to the EW system and does not reduce the AC sensitivity. Thus, a fixed veto at 50 GeV will remove relevant signal in that phase space region.

The dynamical veto is based on

$$x_{\text{jet}} = \frac{\sum_{\text{jets}} E_{T,i}}{\sum_{\text{jets}} E_{T,i} + E_{T,W} + E_{T,Z}}, \text{ where } E_T = E \frac{|\vec{p}_t|}{|\vec{p}|}. \quad (3.3)$$

The definition of E_T here differs from the one chosen in Ref. [25], where $m_T = \sqrt{m^2 + p_T^2}$ was used instead. At small p_T , the latter is dominated by the mass and thus leads to small x_{jet} values for inclusive samples, while E_T generates a broader distribution also in the low- p_T region and leads to better discrimination between SM and AC contributions. In the high- p_T region or for massless particles, these definitions become identical: $m_T = E_T = p_T$.

In fig. 5, we show the x_{jet} distribution at NLO and $\bar{n}\text{NLO}$ QCD for the SM as well as for two exemplary AC values at $\bar{n}\text{NLO}$ QCD. The ratio to the SM NLO prediction shows a non-flat effect of the $\bar{n}\text{NLO}$ corrections, enhancing large x_{jet} values. AC contribute at small x_{jet} values. Vetoing $x_{\text{jet}} > 0.2$ cuts away both the region not sensitive to AC as well as the region with the largest higher-order corrections.

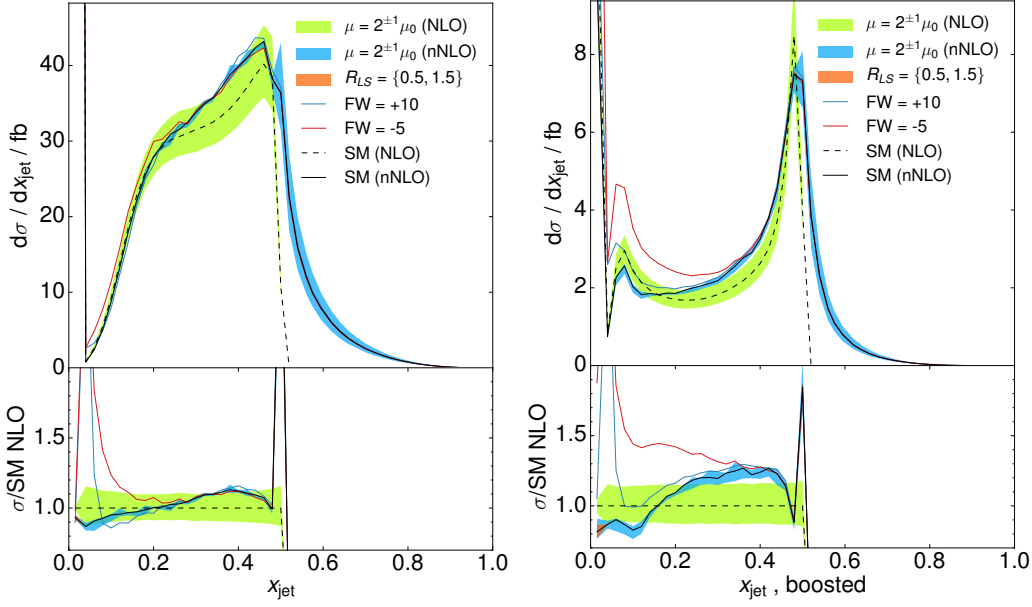


Figure 5: x_{jet} as defined in eq. (3.3) for inclusive and boosted ($p_{\text{TZ}} > 200 \text{ GeV}$) cuts. As visible especially in the boosted case, there are two relevant phase space regions around small x_{jet} and for $x_{\text{jet}} \approx 0.5$. The latter is not sensitive to AC, such that the AC analysis should focus on the region below $x_{\text{jet}} = 0.2$ to 0.3 .

The veto only induces modest logarithms proportional to $\ln(x_{\text{jet}}) = \ln(0.2)$ and offers an alternative to a fixed- p_{T} veto without the need for resummation. \bar{n} NLO is a good testing ground for jet vetos, as all terms with potentially large logarithms are included. Jet veto studies at NLO are not sufficient as they miss the two-jet final state, which is dominant in some phase space regions.

Figure 6 shows the p_{T} of the hardest lepton when an additional cut based on x_{jet} is introduced. The veto is designed to cut away jet-dominated events while allowing harder radiation than a traditional fixed jet veto would, especially in the tails of distributions. The veto reduces the \bar{n} NLO corrections. Instead of an increase of 25%, we see a decrease of the cross section by up to 10%. By cutting away the hard jet events, it also increases the sensitivity to AC.

In fig. 6 scale variation bands are given at NLO and \bar{n} NLO. Those bands are not a reliable uncertainty estimate, since with jet vetoes the scale dependence is artificially reduced. For an extended discussion and possible better estimates see e.g. Ref. [26]. Besides the scale variation bands, we also show a band for the assumed statistical error. This is a rough estimate based on 300 fb^{-1} of data in 20 GeV bins. For extrapolation from one combination of lepton families in the decays of W and Z bosons to all 4 possibilities, we assume a factor 4. In final states such as $\mu^+ \nu_{\mu} \mu^+ \mu^-$, there are two different combinations possible for the reconstruction of the Z boson. We neglect corrections due to imperfect reconstruction and to identical particle effects in that case.

Considering \bar{n} NLO corrections to different observables, we find that SM and AC receive corrections with different shapes, such that a description of AC that is based on LO or NLO and rescaled with SM K-factors is not sufficient. In fig. 7, the \bar{n} NLO corrections to x_{jet} are shown for the SM and different AC values. They are identical (within the simulation uncertainty), such that potentially a K-factor binned in x_{jet} could describe AC beyond NLO QCD.

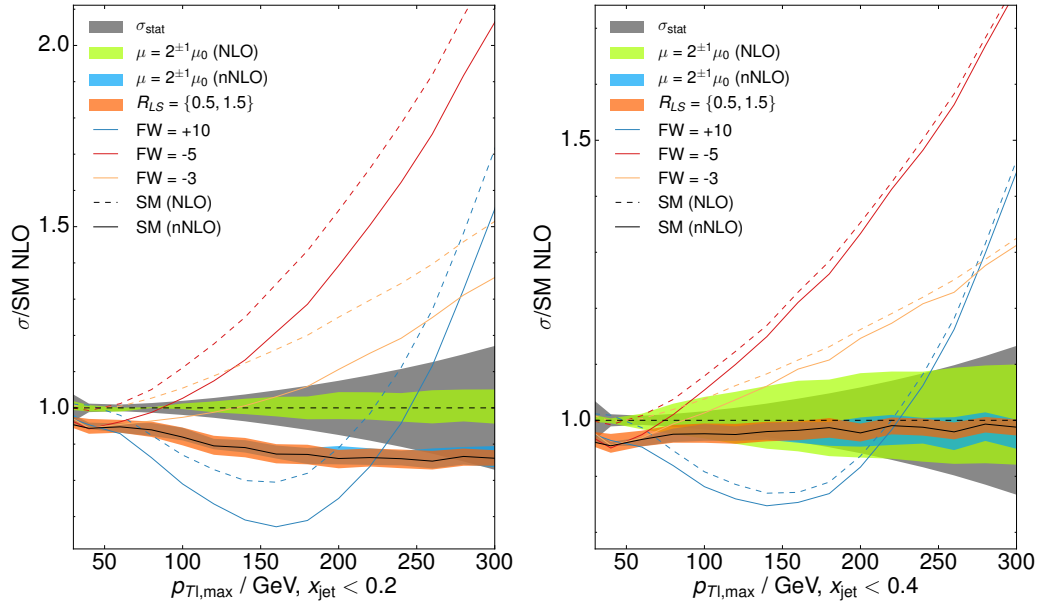


Figure 6: The effect of anomalous couplings in combination with a jet veto is shown for the cuts $x_{\text{jet}} < 0.2$ and $x_{\text{jet}} < 0.4$. Scale variation bands are given at NLO and \bar{n} NLO. An estimate of the statistical uncertainty is given as a grey band, for which an integrated luminosity of 300 fb^{-1} is assumed as well as a factor 4 for all lepton flavor combinations in the decays.

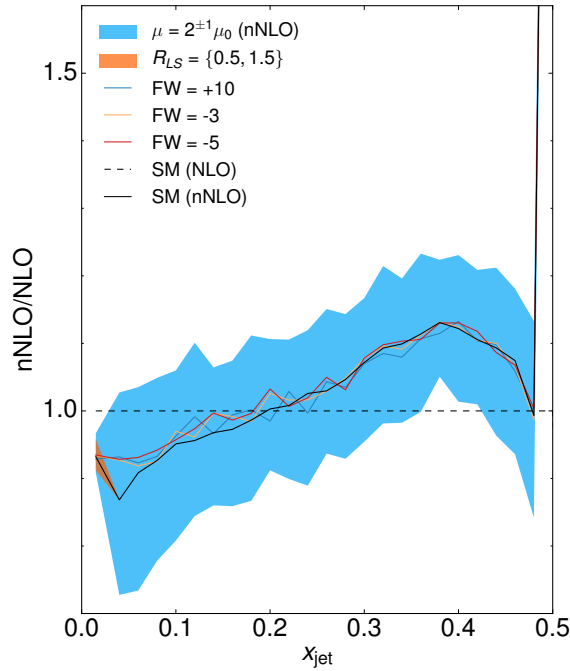


Figure 7: The K-factor for x_{jet} of \bar{n} NLO compared to NLO is shown for the SM and two values of the \mathcal{O}_W coupling. The change of \bar{n} NLO effects visible in fig. 5 can be reduced to their dependence on x_{jet} . Different AC values show similar x_{jet} K-factors and one could thus approximate \bar{n} NLO effects by correcting with the shown K-factor. The fluctuations visible in this plot are due to Monte Carlo statistics.

4. Conclusions

We presented a calculation of WZ production at the LHC at \bar{n} NLO QCD including Anomalous Couplings (AC) using VBFNLO in combination with LoopSim.

To enhance the sensitivity to AC, we use a jet veto based on x_{jet} , as defined in eq. (3.3). This reduces the large non-AC contribution where a high- p_T jet recoils against a vector boson. The x_{jet} cut improves the sensitivity to anomalous couplings without introducing large logarithms, as is expected for the traditional fixed- p_T jet veto. Furthermore, the x_{jet} veto scales with the hardness of the event, such that we include more phase space in the tails of the distribution. Thereby the x_{jet} cut preserves the region sensitive to AC also at high p_{TZ} .

While currently most limits on AC are based on the high- p_T tails of distributions, we suggest to also study the interference region. Since high precision NNLO calculations for vector boson pair production are now becoming available also for distributions [27], the theoretical uncertainties in the interference regions will soon be small enough for a meaningful analysis. This double analysis has the advantage of being sensitive to new physics from both strong coupling (large deviations in the high energy tail) as well as to intermediate coupling physics at lower energy scales, where also electroweak corrections are still expected to be modest.

The dominant kinematical effects of corrections are already present at NLO QCD. Thus, exploratory analyses for AC measurements can be performed with NLO programs. For full data analysis, however, the higher precision of NNLO calculations will ultimately be necessary.

Acknowledgments

FC has been partially supported by the Spanish Government and ERDF funds from the European Commission (Grants No. FPA2014-53631-C2-1-P, FPA2014-57816-P, and SEV-2014-0398) RR is supported by the Graduiertenkolleg ‘‘GRK 1694: Elementarteilchenphysik bei h6ochster Energie und h6ochster Pr6azision.’’

References

- [1] M. Rubin, G. P. Salam and S. Sapeta, *Giant QCD K-factors beyond NLO*, *JHEP* **09** (2010) 084, [1006.2144].
- [2] M. Grazzini, S. Kallweit, D. Rathlev and M. Wiesemann, *$W^{\pm}Z$ production at hadron colliders in NNLO QCD*, 1604.08576.
- [3] ATLAS collaboration, G. Aad et al., *Measurement of WZ production in proton-proton collisions at $\sqrt{s} = 7$ TeV with the ATLAS detector*, *Eur. Phys. J.* **C72** (2012) 2173, [1208.1390].
- [4] ATLAS collaboration, G. Aad et al., *Search for WZ resonances in the fully leptonic channel using pp collisions at $\sqrt{s} = 8$ TeV with the ATLAS detector*, *Phys. Lett.* **B737** (2014) 223–243, [1406.4456].
- [5] ATLAS collaboration, G. Aad et al., *Measurements of $W^{\pm}Z$ production cross sections in pp collisions at $\sqrt{s} = 8$ TeV with the ATLAS detector and limits on anomalous gauge boson self-couplings*, *Phys. Rev.* **D93** (2016) 092004, [1603.02151].
- [6] ATLAS collaboration, M. Aaboud et al., *Measurement of the $W^{\pm}Z$ boson pair-production cross section in pp collisions at $\sqrt{s} = 13$ TeV with the ATLAS Detector*, 1606.04017.

- [7] CMS collaboration, V. Khachatryan et al., *Measurement of the WZ production cross section in pp collisions at $\sqrt{s} = 13$ TeV*, *Phys. Lett. B* (2016), [1607.06943].
- [8] CMS collaboration, S. Chatrchyan et al., *Measurement of the sum of WW and WZ production with W+dijet events in pp collisions at $\sqrt{s} = 7$ TeV*, *Eur. Phys. J. C* **73** (2013) 2283, [1210.7544].
- [9] ATLAS collaboration, G. Aad et al., *Search for resonant diboson production in the WW/WZ \rightarrow lvjj decay channels with the ATLAS detector at $\sqrt{s} = 7$ TeV*, *Phys. Rev. D* **87** (2013) 112006, [1305.0125].
- [10] K. Arnold, M. Bahr, G. Bozzi, F. Campanario, C. Englert et al., *VBFNLO: A Parton level Monte Carlo for processes with electroweak bosons*, *Comput.Phys.Commun.* **180** (2009) 1661–1670, [0811.4559].
- [11] J. Baglio, J. Bellm, F. Campanario, B. Feigl, J. Frank et al., *Release Note - VBFNLO 2.7.0*, 1404.3940.
- [12] K. Arnold, J. Bellm, G. Bozzi, M. Brieg, F. Campanario et al., *VBFNLO: A Parton Level Monte Carlo for Processes with Electroweak Bosons – Manual for Version 2.5.0*, 1107.4038.
- [13] F. Campanario and S. Sapeta, *WZ production beyond NLO for high-pT observables*, *Phys.Lett.* **B718** (2012) 100–104, [1209.4595].
- [14] F. Campanario, M. Rauch and S. Sapeta, *W^+W^- production at high transverse momenta beyond NLO*, *Nucl.Phys.* **B879** (2014) 65–79, [1309.7293].
- [15] F. Campanario, M. Rauch and S. Sapeta, *ZZ production at high transverse momenta beyond NLO QCD*, *JHEP* **08** (2015) 070, [1504.05588].
- [16] F. Campanario, C. Englert, S. Kallweit, M. Spannowsky and D. Zeppenfeld, *NLO QCD corrections to WZ+jet production with leptonic decays*, *JHEP* **1007** (2010) 076, [1006.0390].
- [17] K. Hagiwara, S. Ishihara, R. Szalapski and D. Zeppenfeld, *Low-energy effects of new interactions in the electroweak boson sector*, *Phys.Rev.* **D48** (1993) 2182–2203.
- [18] V. Hankele, G. Klamke, D. Zeppenfeld and T. Figy, *Anomalous Higgs boson couplings in vector boson fusion at the CERN LHC*, *Phys.Rev.* **D74** (2006) 095001, [hep-ph/0609075].
- [19] T. Corbett, O. Eboli, J. Gonzalez-Fraile and M. Gonzalez-Garcia, *Robust Determination of the Higgs Couplings: Power to the Data*, *Phys.Rev.* **D87** (2013) 015022, [1211.4580].
- [20] E. Masso and V. Sanz, *Limits on Anomalous Couplings of the Higgs to Electroweak Gauge Bosons from LEP and LHC*, *Phys.Rev.* **D87** (2013) 033001, [1211.1320].
- [21] A. Butter, O. J. P. Éboli, J. Gonzalez-Fraile, M. C. Gonzalez-Garcia and T. Plehn, *The Gauge-Higgs Legacy of the LHC Run I*, 1604.03105.
- [22] *VBFNLO utility to calculate form factors, version 1.3.0*.
- [23] M. Cacciari, G. P. Salam and G. Soyez, *The Anti-k(t) jet clustering algorithm*, *JHEP* **0804** (2008) 063, [0802.1189].
- [24] R. D. Ball et al., *Parton distributions with LHC data*, *Nucl. Phys.* **B867** (2013) 244–289, [1207.1303].
- [25] F. Campanario, R. Roth and D. Zeppenfeld, *QCD radiation in WH and WZ production and anomalous coupling measurements*, *Phys. Rev.* **D91** (2015) 054039, [1410.4840].
- [26] I. W. Stewart and F. J. Tackmann, *Theory Uncertainties for Higgs and Other Searches Using Jet Bins*, *Phys.Rev.* **D85** (2012) 034011, [1107.2117].
- [27] M. Grazzini, S. Kallweit, S. Pozzorini, D. Rathlev and M. Wiesemann, *W^+W^- production at the LHC: fiducial cross sections and distributions in NNLO QCD*, *JHEP* **08** (2016) 140, [1605.02716].